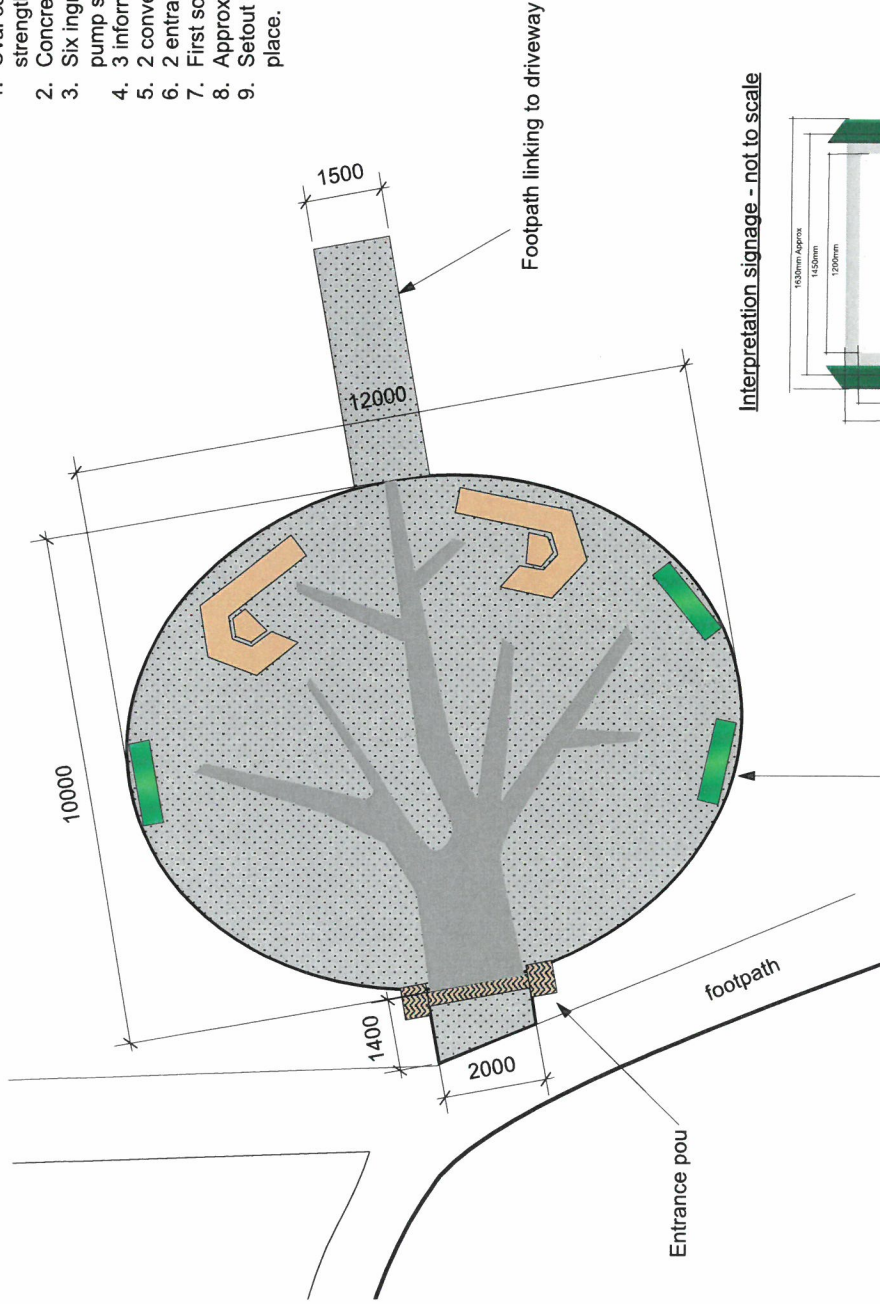


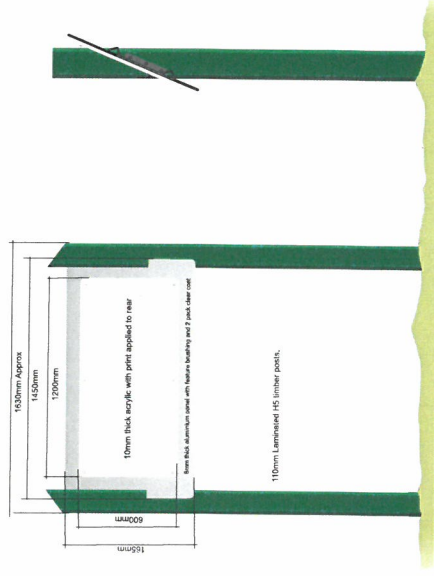
General Notes

1. Oval concrete surface with exposed aggregate finish with reinforcing mesh. Concrete strength 20 mpa with 665, 5 gauge mesh. All concrete work to comply with NZS3604
2. Concrete pattern smooth concrete finish, 20 mpa with 665, 5 gauge mesh
3. Six inground lights, 2 x 1000 lumen and 4 x 200 lumen. Power supply from nearby pump shed
4. 3 information signs, 1630 mm long 1300mm at highest point. Positions as shown
5. 2 conversation style seats
6. 2 entrance pou
7. First sod to be turned by Youth Council members
8. Approximately 25 meters of concrete pathway to link with the driveway
9. Setout to be approved by Stephen Richards TDC before any physical works take place.



Example seating/table layout

Interpretation signage - not to scale



Information panels



Thorp Bush pedestrian entrance area location



Thorps Bush location plan

Date: 21/5/2019
 Scale 1:00 @ A3
 Drawn: Stephen Richards
 Sheet 2 of 2
 Contact: Lani Evans
 Lynne Hall
 All dimensions in millimetres



**Te Maatu/Thorp Bush Pedestrian
 Entranceway Development**

PUBLIC FORUM SPIEL FOR 21.5.19 by Jim Butler

Page 6 of your agenda Mr Chairman. I quote. "Motueka Library - Positive progress." Will I find out at this meeting that the site for the new library on Decks Reserve been determined yet ?

Also on page 6. Motueka Footpath Improvements. It would me chirlish of me to complain about the Poole St footpath being only 5th on your priority list, Mr Chairman. Though I cannot help remembering that the Board once had it as its number 1 priority way back in 2002, but then changed its mind.

Page 7. Motueka Old Wharf restoration. What a sad story this is Mr Chairman. Fast track back again to 2002 when on behalf of Keep Motueka Beautiful, Bob Cooke put in a detailed estimate of \$14,000 to restore this Old Wharf. But Bob Cooke wasn't an engineer, so an 'expert' was hired who produced a fancy booklet on the required work about 2 or 3 years later, (there must still be copies around somewhere) with estimated cost of about \$100,000. Now that that the Old Wharf has been listed by the Historic Places Trust, any work on it has to meet their standards. Enough to make this grumpy old ratepayer weep, Mr Chairman. Also on Page 7. Golden Bay Application for a Local Board. The Local Gov't Commission has opened this up for submissions on some of TDC's operations within certain limits. Closure date, 10th June. The 4 pages, 11 to 14, need careful reading. Will I find out at this meeting, if the Board is going to supply a submission, Mr Chairman ?

Tabled Document
MUB 19-05-21.

Community Board Meeting - Motueka. 21.05.19

From: Ian Williamson.

To: Mr Chairman + members of the Community Board:

1 When tragedy strikes, saving critical time can be the difference between life and death. Recently I witnessed a logging truck going through High St Motueka - it was a truck and trailer unit fully laden - the fire siren sounded and the Fire Engine was even also going through High St until it was blocked behind the logging truck + trailer with lights flashing + siren screaming unable to proceed. Eventually the truck proceeded till outside New World car-park entrance + the Fire Engine was able to continue on its way. What can we suggest? -

- a) Maybe a letter to F.E.M.Z. suggesting a shift of our "Urban Fire station" to out-side of the town centre nearest to our "Rural Fire station" location.
- b) Maybe a letter to N.Z.T.A. suggesting a by-pass is now especially urgent for heavy truck and trailer units so as not to obstruct the passing through of High Street of Emergency Vehicles.

2 Along Queen Victoria Street where there are changes to the speed limit could this be painted on the road surface with reflective white paint.

Tabled Document
MCB 19-05-21