

# Reservoir Creek- Restoration of an Urban Stream

Reservoir Creek meets the Waimea Estuary

Riparian Planting Zones



Zone 9

SH 60 Underpass to Waimea Estuary Delta

2/6/08



## Zone 9 Features

1. Very intact salt marsh communities within the inter-tidal areas.
2. Many woody perennial weeds present on stream banks and above the tidal influence, hawthorne, blackberry, gorse, pampas and exotic grasses. Tall fescue is present on lower inter-tidal slopes.
3. Some re-vegetation plantings already established on true right of stream delta.

## Eroded Estuary Margins

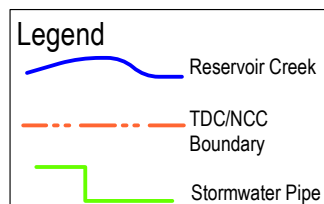
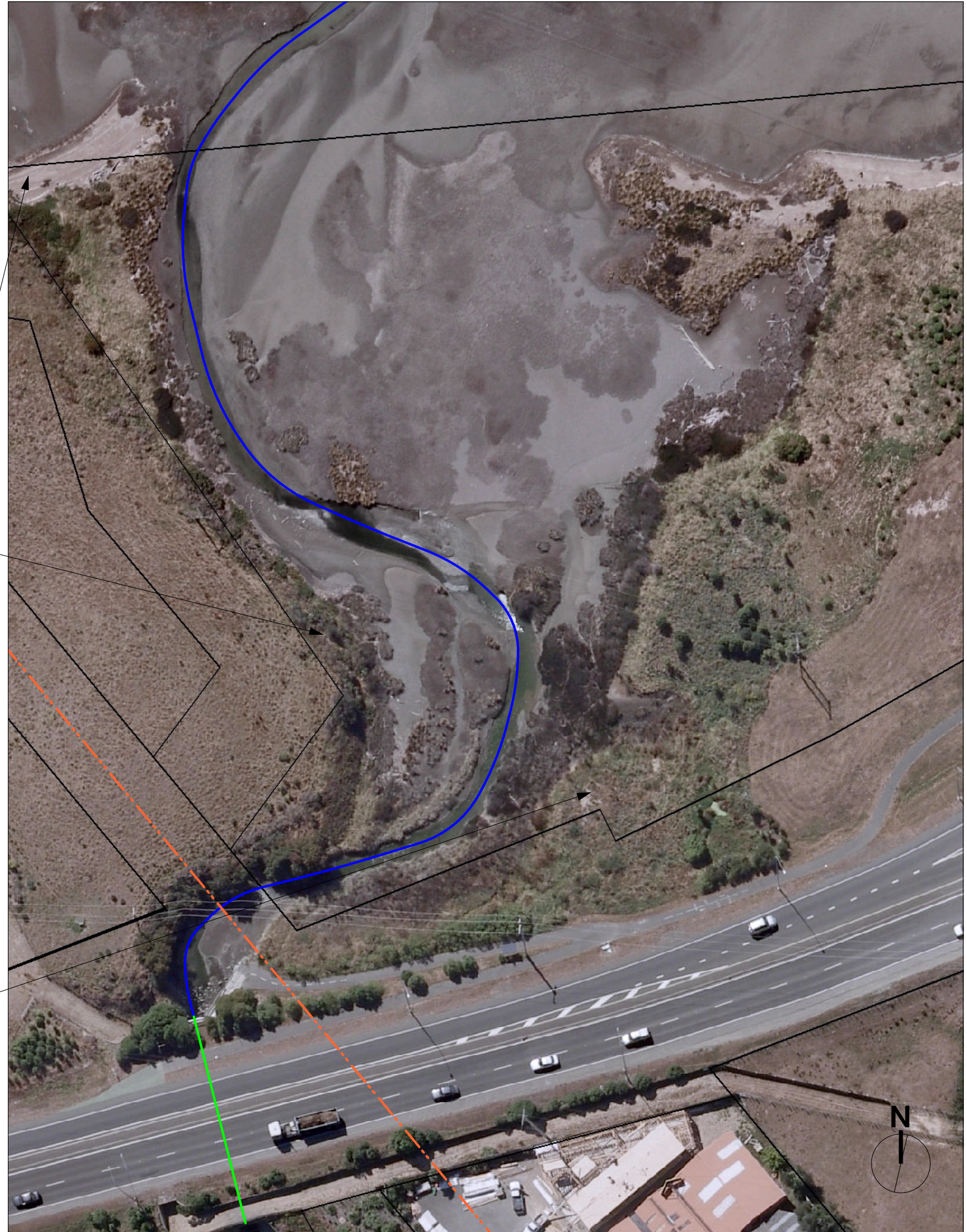
1. Areas of estuary coastline on either side of the stream delta have eroded banks. These areas require restoration of a gradual profile and re-vegetating to stabilise with appropriate sequence of plants.

## Stream Banks (true left)

1. Remove pampas/blackberry clumps and poison hawthorne trees but leave standing.
2. Retain gorse clumps to plant under and around which will help retain some habitat and shelter.
3. Planting area 170m x 3m with some steeper banks. Can accommodate approximately 400 plants.
4. Above tidal influence plant mikimiki, cabbage tree, hebe, manaka, flax, pittosporum.
5. Estuarine margins plant coastal ribbonwood, estuary tussock, oioi where appropriate.

## Stream Banks (true right)

1. Control and remove sparse gorse clumps.
2. Between estuary edge and grass areas continue planting a buffer with toetoe, mikimiki, flax, cabbage tree, manuka and pittosporum. 400 plants required.
3. Estuarine margins plant coastal ribbonwood, estuary tussock where appropriate.



Typical salt Marsh Communities

