

Report No:	REP11-08-14
File No:	S611
Date:	16 Aug 2011
Information Only – no decision required	

REPORT SUMMARY

Report to: Environment & Planning Committee
Meeting Date: 16 August 2011
Report Author: Dennis Bush-King, Environment & Planning Manager
Subject: **MANAGER'S REPORT**

EXECUTIVE SUMMARY

This report covers a number of general matters concerning the activities of the Environment & Planning Department.

RECOMMENDATION/S

That the report be received.

DRAFT RESOLUTION

THAT the Environment and Planning Committee receives the Manager's Report REP11-08-14

Report No:	REP11-08-14
File No:	S611
Report Date:	16 August 2011
Information Only – no substantive decisions required	

Report to: Environment & Planning Committee
Meeting Date: 16 August 2011
Report Author: Dennis Bush-King, Environment & Planning Manager
Subject: **MANAGER'S REPORT**

1. Customer Survey

- 1.1 In addition to the Communitraktm Residents Survey, we also survey customers who in the previous year have sought from Council a building or resource consent, a dog registration, or an environmental health permit or license. Respondents are chosen from a randomised list of 400 applicants and asked questions about the helpfulness of staff, the reasonableness of costs, the time taken to obtain a decision, the usefulness and ease of council forms and brochures, and the ease of understanding an applicant's on-going obligations. Respondents are also asked to give an overall level of satisfaction with Council service.
- 1.2 The summary results presented in the table below show a pleasing response but still room for improvement. Across all consent categories 89.5% percent of respondents consider staff were courteous and helpful (slightly down on the 90.9% last year). Overall level of satisfaction was still high at 88.0% down on last year's figure of 89.9%.
- 1.3 Some of the feedback still reflects concerns about the cost of processing low value building consents and whether these account for the changes introduced removing some buildings from requiring consent in November 2010 is unknown. But there are fixed charges associated with processing consents that disproportionately impact on low value consents under our user-pays approach (i.e. there is no ratepayer subsidy on this aspect of building control).

Question	Score – showing proportion of respondents who agree or strongly agree				
	Total	Building	Resource Consents	Dogs	Environment al Health
Staff were helpful and courteous	89.5 (90.9)	86.8 (86.3)	82.7 (94.3)	96.2 (90.4)	92.3 (92.3)
Costs were reasonable	60.8 (60.6)	50.9 (39.2)	42.3 (45.3)	80.8 (84.6)	69.2 (73.1)
Time taken was reasonable	83.7 (83.2)	75.5 (76.5)	80.8 (79.2)	100.0 (96.2)	78.8 (80.8)
Overall level of satisfaction with Council service	88.0 (89.9)	77.4 (82.4)	82.7 (88.7)	98.1 (96.2)	94.2 (92.3)

Bracketed figures are those applying 2009/2010

2. Animal Health Board Programme Management

- 2.1 Annex 1 contains the June Monthly report for the Bovine Tb programme in Tasman.

3. Ecological Values and Condition of the Kaihoka Lakes and Lake Otuhie, Northwest Nelson, by Marc Shallenberg, Otago University, June 2011

- 3.1 We have just had completed a report on the ecological value and health of the Kaihoka Lakes and Lake Otuhie under the Envirolink Scheme. Kaihoka Lakes are dune lakes, located just north of Westhaven Inlet, have no stream outlet and have been identified by Department of Conservation as having high scientific and conservation value. The “ecological integrity” (a measure of its “nativeness”, “pristineness” and biodiversity) of the East Kaihoka Lake was found to be in the top 10% of 46 shallow coastal lakes surveyed from 2004-08 by a cross-departmental research group of Department of Conservation, Universities and NIWA. Lake Otuhie and West Kaihoka Lake were ranked in the top 25%.
- 3.2 The lakes contain landlocked populations of banded kokopu which are rare in New Zealand, but are known to exist in some west coast North Island dune lakes and Lake Okataina (near Rotorua). Apart from one very large longfin eel found in Kaihoka Lake East, no other fish species were found in the lakes. Genetic analysis suggests that these fish have been isolated for many centuries and possibly millennia. This restricted genetic variation suggests that the population will be more vulnerable to environmental change, including introductions of new species to the lake. Trout have been introduced in these lakes in the past but have presumably died out due to lack of spawning sites in the catchments.
- 3.3 Both Kaihoka lakes contain unusually large mussels and invertebrates typical of both freshwater and brackish conditions. Lake Otuhie is considered to have a typical fish community for a shallow lake with unimpeded connection to the sea containing longfin and shortfin eel, inanga and common bully. Brown trout have been found in this lake in the past but not in this recent study, probably due to lack of recruitment from the sea (the catchment is considered unsuitable for trout recruitment). As for the Kaihoka Lakes, the lack of trout in these lowland lakes confers added ecological significance as their food webs and native aquatic fauna are unaffected by trout, which is not common in New Zealand. The main threats to these lakes are increased external nutrient loading from land use in the catchments and potential for invasion of exotic species. Rapid degradation of current ecological condition is likely if these threats were realised.
- 3.4 The full report is available on request.

4. Waimea Inlet – Historical Sediment Coring, by Wriggle Coastal Management Ltd, June 2011

4.1 We have recently received the results of sediment sampling in the Waimea Estuary. The two sediment cores were collected from representative intertidal settling areas within estuary, one in the eastern arm between Headingly Lane and Saxton Island (site 1) and the other in the western arm north of Research Orchard Rd (site 2). The purpose of this investigation was to help clarify the relationship between past land-use activities and sediment inputs to the estuary, and to guide monitoring and management priorities in the estuary. The results showed that in the past the mud content has increased by 50-100% at site 1 and 100-200% at site 2. Shellfish layers appear to be smothered under thick layers of mud. The fine sediment deposition rate at site 2 was considered “very high” between 1953 and 1964 (from caesium dating). This period coincided with documented high erosion rates from surrounding orchard land from the 1950’s to early 1970’s. Site 1 had deposition rates considered “moderate”. The indications are that sedimentation rates are not as high as in the past but we cannot say there is no longer a sedimentation effect from the land. Our forward monitoring programme will confirm this through annual measurement at four sites which have been set up.

5. Annual Report

5.1 Council will soon receive a draft Annual report for the year ending 30 June 2011. A copy of the non-financial achievements for the environment and planning Activity areas is attached as Appendix 2.

6. Waimea Inlet Forum

7.1 Attached as Appendix 3 is a letter from Gillian Bishop, a member of the Waimea Inlet Forum Working Group updating us on where things are at and encouraging staff to engage with the Forum as required. Staff are in the process of preparing a Task Brief to ensure that council activities observe the intent of the Citizen’s Charter signed following the conclusion of the Waimea Inlet Strategy last year.

8. DRAFT RESOLUTION

THAT the Environment and Planning Committee receives the Manager’s Report REP11-07-11



Dennis Bush-King
Environment & Planning Manager

Appendices:

1. AHB Monthly Report - June 2011
2. Annual Report Text for Environment and Planning
3. Letter from Waimea Inlet Forum

Appendix 1

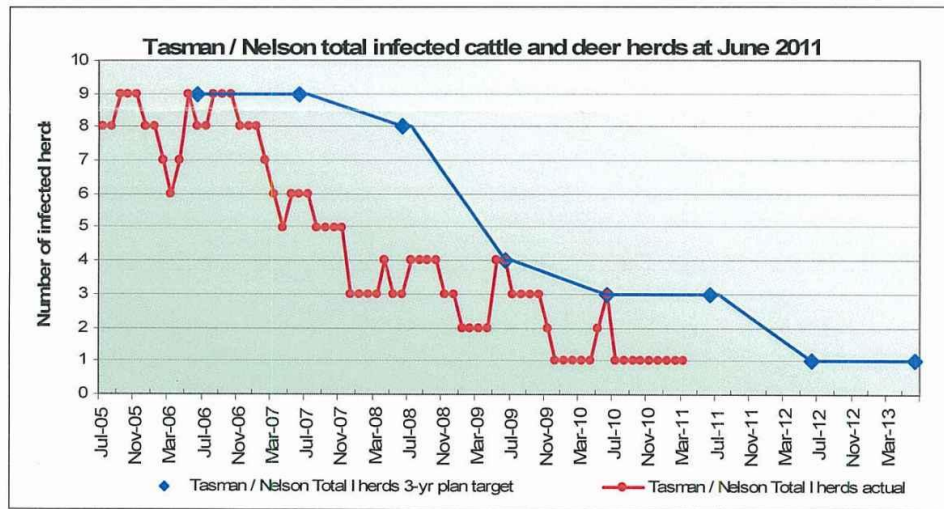


Animal Health Board Programme Management Monthly Report for Tasman: June 2011

To: Paul Wylie, Chief Executive, Tasman District Council
From: Paul Brady Programme Manager, West Coast Tasman
Date: 4 July 2011



1. PROGRESS TO STRATEGY OBJECTIVES



2. VECTOR CONTROL

2.1 Approved programme for Tasman for 2010/11

	Approved Projects	Approved Hectares (Ha)
Possum Control	14	84,524
Possum & Ferret surveys	1	6523
Pig Surveys	1	10,000
Performance Monitor	11	68,582
Trend Monitor	17	94,176

2.2 Activities completed in June

Operation Name	Possum Control (Ha)	Performance/Trend Monitors (Ha)	Ferret & Possum Surveys (Ha)	Post Mortems	Pig Survey (Ha)	Total Hectares	Value (\$)
Golden Bay	N/A	8,920	N/A	N/A	N/A	8,920	20,460

Vector Operations summary to date:

- Fourteen ground control operations with performance monitors have been completed.
- One ground survey operation in progress.
- Fifteen trend monitors have been completed and two remain to be completed in July 2011.
- The Tophouse and Upper Motueka pig survey is in progress.

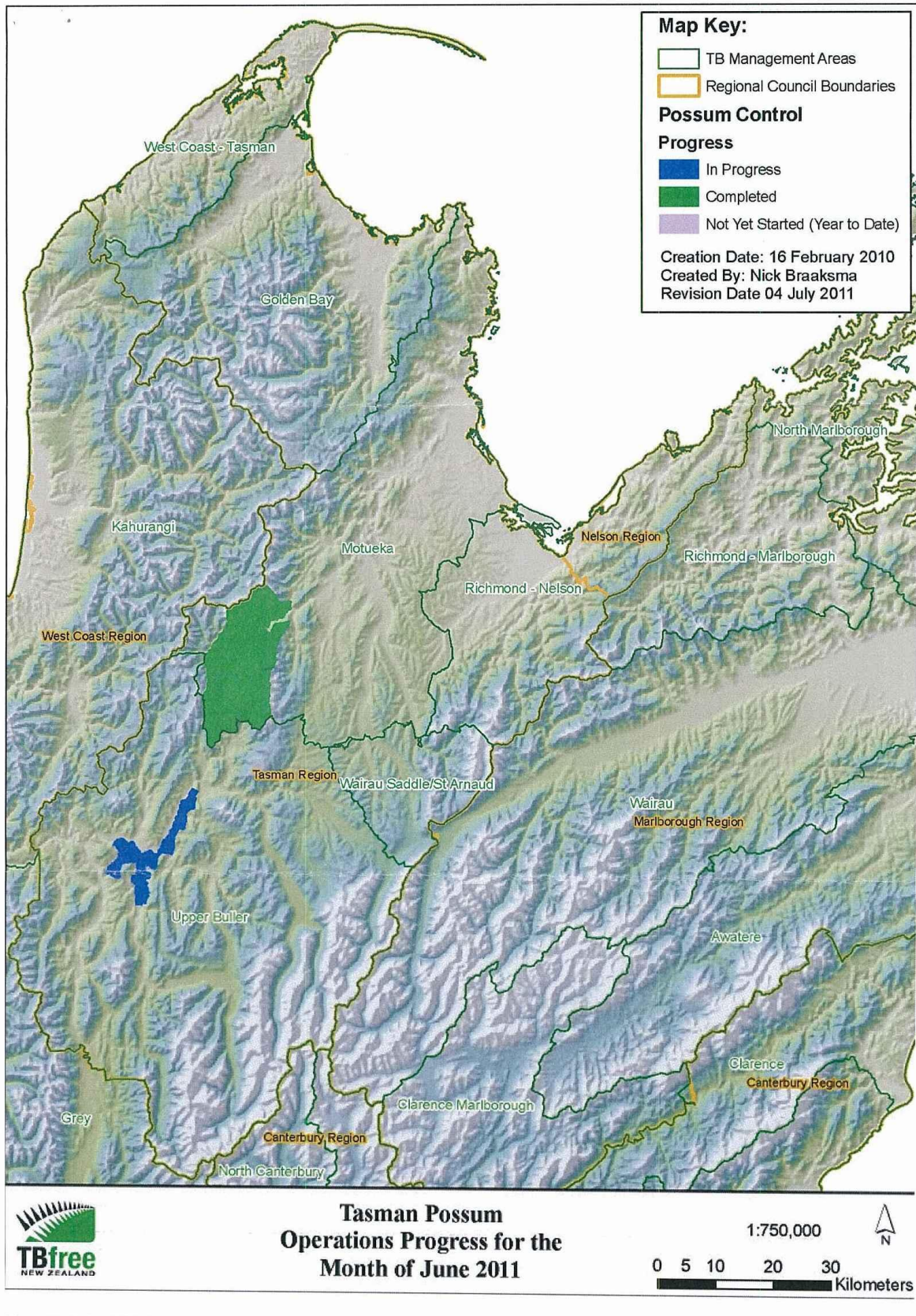
The Murchison South Survey is 60% completed. The South Motueka trend monitor has been awarded and is in progress along with the East Takaka Brooklyn trend monitor, due to be completed in July 2011.

3. 2011/12 TENDER ROUNDS

The first eleven output ground control tenders for the period between July and December 2011 have been awarded with all contracts accepted by Nelson and Marlborough based contractors.

The remaining Tasman vector control and survey operations will be prioritised and assessed according to the remaining budget.

All consents and permits have been received for the Wangapeka/Mt Owen aerial 1080 operation. Pre-feeding will commence early July followed by the 1080 drop (depending on weather). Consultation for the Pinchback Aerial 1080 operation is in progress.



ENVIRONMENT AND PLANNING

RESOURCE POLICY

What We Do

This activity involves the analysis and development of policy and plans required under the Resource Management Act and the Biosecurity Act and the provision of policy advice on matters of national importance affecting Tasman District. It involves responding to new environmental issues that emerge from time to time and where Council considers a policy response is warranted, including where a response is needed to information received through monitoring undertaken in the Environmental Information Activity.

Why We Do It

Council is required by law and community expectation to manage the environment of Tasman District and the consequences of human activity. The Tasman community has told us that planning for the future is important. This is so we can meet the needs of communities and manage those activities which might otherwise undermine the character and resource values which are special to Tasman.

Our Goal

We aim to provide an appropriate policy framework for identifying and responding to resource management policy issues which lead to sustainably managing the District's natural and physical resources including biosecurity risks.

How this activity contributes to the Community Outcomes

- Having in place policies and plans that promote sustainable management of natural and physical resources and, where necessary, regulating activities which would over time degrade the environment or place resources under pressure, keeps Tasman District special
- The activity ensures that living environments are pleasant, safe, and that the activities of others do not adversely impact on citizens' lives. By ensuring resources are well managed, the activity contributes to the development of the district in appropriate locations and scale.
- Effective resource policy planning ensures infrastructure needs are appropriate, efficient, and available to meet the demands of the community.
- This activity safeguards the community's health and well-being by ensuring resource use and human activities affecting resources do not adversely affect quality of life or community well-being.
- This activity identifies heritage values of significance to the district and has in place a framework for protecting and enhancing these values, including sites which are important to iwi.
- Public participation is provided for in the processes of development of policies and plans under the Resource Management and Biosecurity Acts.
- Policies and plans identify opportunities for economic development and potential hazards and constraints affecting such opportunities.

Our levels of service

We will develop and maintain an appropriate policy framework which effectively and efficiently promotes the sustainable management of the District's natural and physical resources by:

- identifying and responding to resource management policy issues and biosecurity risks; and
- providing a sound and appropriate policy planning framework that will protect and enhance our unique environment and promote healthy and safe communities; and
- ensuring that plan development systems are administered in a way which meets the expected environmental outcomes identified in policy statements and plans.

How We Measure Progress

The level of community support for Council's resource management policy and planning work is rated as fairly satisfied or better through community surveys. [Target 75%]	58% of residents surveyed satisfied with 25% of respondents not knowing enough to comment which means 77% of those with knowledge were happy.
Having in place an operative Regional Pest Management Strategy, which is kept up to date and relevant. .	Have maintained an operative Regional Pest Management Strategy. An Operational Plan is produced annually and is reviewed annually. The Strategy to set down for review in 2012.
Having in place an operative Tasman Resource Management Plan, which is kept up to date and relevant.	Part IV notified February 2010 and decisions on submissions were released 16 July 2011. Parts V and VI made operative on 26 February 2011.

ENVIRONMENT AND PLANNING

Major Activities

Undertake strategic development planning for urban and rural areas in the District and process associated plan changes and resolve any appeals, including current work on Richmond West, Richmond East, and work on Richmond CBD (2010 to 2012), Motueka West (current to 2011), Mapua (current to 2011), Eastern Golden Bay (current to 2010), Western Golden Bay (current to 2011), Wakefield/Brightwater (2012).	Notified Change 20 to the TRMP seeking to rezone land in Richmond East in August 2010 and Change 22 Mapua Ruby Bay in February 2011. Advanced work on Motueka West and Takaka. Continued to mediate on appeals concerning Richmond West rezoning.
In response to settling appeals on landscape matters, undertake Western Golden Bay Strategic Development Study (current – 2011) and Kina to Marahau (2011/2012).	Work on Western Golden Bay recommenced July 2010 when extra resources became available. Community consultation still on-going.
To complete Part IV of the Tasman Resource Management Plan - Rivers and Lakes.	Set of amendments to introduce Part IV had been notified February 2010. Called for further submissions 22 November 2010 and hearings held March 2011 with decisions released 16 July 2011.
Review water management provisions, process associated plan changes, and resolve any appeals, including for the Moutere Water Management Zone (2009), Motueka Water Management Zone (current to 2010), Takaka Water Management Zone (2010 to 2012), Waimea Water Management Zone (2012 to 2013).	Changes to the Moutere water management provisions in the TRMP have been completed. Three appeals lodged in respect of the changes relating to Motueka. Court hearing anticipated October 2011.
Respond to any plan change requests and to administer other parts of the Tasman Resource Management Plan as required including Rural Policy Review (2009 to 2011), Natural Hazards Assessment (2009–2010).	Sought to resolve appeals concerning Frost Fans (Change 14 to the TRMP). Notified Change 21 and Variation 71 concerning natural hazards provisions in TRMP in August 2010, hearings conducted July 2011. Hearings for Plan Change 16 - Cultural Heritage held March 2011 and decisions released July 2011. Introduced change to TRMP to account for GST change in October 2010.
Review issues and options for managing activities and impacts on the Waimea Estuary (2009/2010) in conjunction with Nelson City Council, Department of Conservation, iwi and stakeholders.	Completed the review and adopted the Waimea Inlet Integrated Management Strategy and Waimea Inlet (citizens') Charter signed 27 September 2010.
Investigate the merger of the Tasman Regional Policy Statement with the Tasman Resource Management Plan.	This has yet to commence.
To provide policy advice to Council on legislative and other significant resource management initiatives requiring Council response.	Responded to proposed aquaculture reforms, a proposed NPS on Biodiversity, a proposed NES on Plantation Forestry and a proposed NES on Soil Contamination, the Marine and Coastal Area Bill, and RMA Phase 2 reforms. Worked with iwi on preparing an Iwi Management Plan for Tasman.
Review and administer the Regional Pest Management Strategy in conjunction with Nelson City Council.	Have responded to the Government's Pest Management Review. Continued involvement in a Joint Marine Biosecurity committee with Nelson City and Marlborough District Councils and Biosecurity New Zealand. Have delayed commencing the review of the RPMS pending passage of the Biosecurity Amendment Bill.

ENVIRONMENT AND PLANNING

ENVIRONMENTAL INFORMATION

What We Do

This activity involves establishing and maintaining an efficient resource information base to allow Council to properly discharge its resource management functions and to provide advice to the public on environmental conditions and issues affecting the District. It also involves investigation, monitoring and analysis of significant environmental issues affecting or likely to affect the District.

Why We Do It

Council is required by law and community expectation to monitor the state of the environment of Tasman District and to undertake resource investigations that allow us to better understand and manage the effects of resource use and changes in the quality and quantity of our land, water, air, and coastal resources.

Our Goal

We aim to achieve a robust and cost effective approach to environmental monitoring and resource investigations that will provide a good understanding of the District's resources and the ability to assess environmental trends and manage risks to the environment.

How this activity contributes to the Community Outcomes

- By monitoring and investigating the state of the environment and the trends, risks, and pressures it faces, we can make better decisions and have in place policies and plans that promote sustainable management of natural and physical resources, and where necessary, that regulate activities which over time would degrade the environment or place resources under pressure.
- By monitoring and investigating the state of the environment and the trends, risks, and pressures it faces, we can make better decisions and have in place policies and plans that contribute to this outcome.
- Our flood warning system and work to identify contamination risks are designed to promote safety of people and community well-being.
- We make environmental information available and work with groups in the community to help them make environmentally sound decisions.
- Resource information identifies opportunities for economic development in the use and development of resources of benefit to current and future generations, and potential hazards and constraints affecting such opportunities.

Our levels of Service

We will provide environmental monitoring and resource investigations services in a professional and scientifically sound manner to ensure our natural and physical resources are sustainably managed

How We Measure Progress

The level of community support for Council's environmental information and monitoring work is rated as fairly satisfied or better through community surveys. [Target 75%]	68% of residents surveyed satisfied with 24% of respondents not knowing enough to comment which means 89% of those with knowledge were happy.
We report air quality data through our website and provide an annual report with the aim of having no more than three PM ₁₀ exceedences of the National Environmental Standard by 2016 and only one by 2020.	Website continuously updated and required manual update of the number of exceedences was no more than 3 days out of date. 10 exceedences were measured in the Richmond airshed (as at 9/8/11), 3 more than the previous winter. One Newsline article. Reported on a meteorological and air quality model for Waimea Plains-Nelson
We release at least one issue based State of the Environment (SOE) report annually.	'State of the Environment' River Water Quality in Tasman District, report released in December 2010. 'State of the Environment' Groundwater Quality Report, released in October 2010.
Undertake targeted investigations of resource issues with the findings released via the Environment and Planning Committee (EPC) and via the Council's website.	Updated soil information through a regional soil survey programme - Takaka Valley soil mapping completed in 2010. Waimea Plains started in 2011 Tasman Valley Stream investigation – sampling almost complete.

ENVIRONMENT AND PLANNING

	<p>Tukurua Stream faecal indicator sampling – ongoing.</p> <p>Nitrate source tracking study – Motupipi River and Borck Creek (interim report June 2011)</p> <p>District Coastal vulnerability assessment – most fieldwork is complete, report due in June 2012</p> <p>Various Microbial Source Tracking studies on catchments with high faecal indicator bacteria.</p> <p>Fish passage barrier survey – ongoing</p>
<p>We ensure our hydrometric network is available for regional hazard management. [Target 99%]</p>	<p>The network functioned well throughout the year with the system operating continuously with only individual site interruption on occasion due to telemetry issues. Telemetry sites are currently being upgraded to modern loggers and communication equipment, and this task is 95% completed</p>

Major Activities

<p>Revise and continue implementing the State of the Environment Monitoring and Reporting Strategy.</p>	<p>Council continues to implement the State of the Environment Monitoring and Reporting Strategy.</p>
<p>Prepare and annually distribute issue based reports (Surface Water, Air, Groundwater, Coastal, Land) on the State of the Environment.</p>	<p>Soil Health Monitoring report submitted July 2010. Groundwater Quality SOE released in October 2010</p> <p>River water Quality SOE reports released December 2010.</p> <p>Presented results of air quality monitoring in July 2010.</p> <p>Tasman's Natural Swimming Holes and Beaches – Popularity and Effects on the Recreational Experience May 2011. Lake Otuhie and Kaihoka Lakes report, June 2011 and Waimea Estuary Sediment Cores project (June 2011)</p> <p>Results of the National Groundwater Pesticide Monitoring programme reported to council July 14th 2011</p>
<p>Monitor, collect and maintain resource data/records and report on environmental resources condition and trends as provided for in Council's State of the Environment Monitoring Strategy.</p>	<p>The monitoring, collection and maintenance of resource data/records is ongoing. The data is reported in real-time and, in some cases, is available on-line.</p>
<p>Initiate and respond to flood warnings and continue water resource investigations in the Waimea, Buller, Golden Bay, Moutere and Motueka catchments.</p>	<p><u>Hydrology:</u></p> <ul style="list-style-type: none"> - Flood warnings were issued on a number of occasions, the most significant being in December 2010 which resulted in flooding problems in the Aorere area. - The telemetry system continues to perform well during all weather alerts, except for the loss of a small amount of equipment during the December 2010 flood event. - Contract hydrology services are provided to Nelson City Council. - Water resource information on the TDC 'Flowphone' and web page continue to be widely used by anglers, canoeists and others. <p><u>Water Resource Investigations:</u></p> <ul style="list-style-type: none"> - Ongoing work on targeted water resource investigations continues in the Waimea, Moutere, Motueka and Golden Bay Catchments.

ENVIRONMENT AND PLANNING

	<p>-Ongoing effort in maintaining and enhancing water resource monitoring sites including both surface and groundwater sites for ongoing sustainable management of this vital resource</p> <p>- Ongoing effort has continued into the Waimea Water Augmentation project.</p> <p>- Developed a Takaka Flood Model</p>
Conduct investigations into pollution and contamination related issues.	<p>Maintained and updated Council's Site Contamination Register. Received funding to prepared guidance notes for managing the effects of sheep dips. Four supporting documents were produced and have been disseminated to interested organisations around the country for them to use to manage the historic sheep dip issue.</p>
Investigate and report on natural hazards affecting the District.	<ul style="list-style-type: none"> - Tsunami inundation modelling started - Takaka flood modelling completed - Brightwater flood modelling initiated - Preparatory project to identify sites for dating of movement of the Waimea-Flaxmore Fault System - Preliminary investigation of liquefaction hazard and report produced

ENVIRONMENT AND PLANNING

RESOURCE CONSENTS & COMPLIANCE

What We Do

This activity involves the assessment and processing of resource consent applications for the development and use of land, air, water or coastal resources, and related compliance monitoring and enforcement.

Why We Do It

Council is required by law to receive and process resource consent applications and to monitor and enforce compliance with plan rules and conditions of consent in order to achieve sustainable management of natural and physical resources. There is also an expectation from the community that we will respond to, and resolve, environmental and nuisance complaints.

Our Goal

We aim to see development of the District's resources that achieves high standards within sustainable limits set by Council's plans and with minimum environmental impact and to provide excellent customer service in processing consents.

How this activity contributes to the Community Outcomes

- The consent process seeks to ensure that the development and use of the environment promotes sustainable management of natural and physical resources. Where necessary, conditions can be imposed (and monitored) that regulate activities which over time would degrade the environment or place resources under pressure.
- The activity ensures that living environments are pleasant, safe, and that the activities of others do not negatively impact on citizens' lives. By ensuring resources are well managed and adverse effects of resource use properly considered, the activity contributes to the development of the District in appropriate locations and scale.
- Effective planning ensures infrastructure needs are appropriate, efficient, and available to meet the demands of the community.
- This activity safeguards the community's health and well-being by ensuring resource use and human activities affecting resources do not adversely affect quality of life or community well-being.
- This activity can identify and protect heritage values of significance to the district, including sites which are important to iwi.
- Community participation is provided for in the consent process under the Resource Management Act. This can be either by way of consultation by resource consent applicants, or by full public notification or limited notification of applications whereby opportunities are given for persons to lodge submissions and appear in front of hearings committees.
- Resource consents can facilitate economic development opportunities and compliance monitoring can ensure fair and equal opportunities for all.

Our levels of service

We will process resource consent applications in a professional and timely manner to ensure our natural and physical resources are sustainably managed.

We will monitor and enforce compliance with consent conditions in a firm and fair manner and respond to complaints about activities adversely affecting people or the environment.

How We Measure Progress

The level of support for Council's resource management consent from applicants and compliance work is rated as fairly satisfied or better through community surveys. [Target 75%]	Reported satisfaction level of 82.7% with 1.9% unable to answer (70% and 4% respectively in 2009/2010). 15.4% not very satisfied for reasons which include time delays, expense, and too much red-tape (cf 30% in 2009/2010).
Consent applications are processed within statutory timeframes (where they exist). [Target 100%]	99% of non-notified applications processed within timeframe, 100% for publicly notified and limited notified applications (cf 96.5%, 82% and 72% respectively in 2009/2010).
We monitor compliance with resource consent conditions and plan rules, and report at least annually on one compliance investigation.	The annual Dairy Effluent Discharge Report was submitted in July 2011 and the Water Metering Report in August 2011. The annual Compliance and Enforcement Summary report is to be presented in October 2011.

ENVIRONMENT AND PLANNING

We respond to all complaints, depending on urgency and effect, within 15 working days. [Target 100%]

All complaints were responded to within 15 working days with 81% resolved entirely within their deadline

Major Activities

<p>Respond to enquiries and undertake the necessary consultation, analysis and processing of resource consent applications related to Council's resource management functions.</p>	<p>Council continues to respond to enquiries and all other aspects of resource consent applications on an ongoing basis. As at 30 June 2011 we had completed the processing of 832 non-notified applications with 99% complying with statutory timeframes, and 81 notified or limited applications with 100% complying with statutory timeframes. As at 30 June 2011, six appeals to the Environment Court await resolution.</p>																								
<p>Implement monitoring programmes on resource consents that have potentially significant resource and environmental impacts, and to undertake post-consent and rule compliance monitoring and necessary enforcement, including responding to environmental nuisance complaints. To ensure that this monitoring is fed back into the policy development process.</p>	<p>The compliance monitoring team continues to carry out consent compliance monitoring in accordance with the Compliance Monitoring Strategy. Compliance continued to provide 3-monthly reports to the Environment & Planning Committee on monitored performance of individual targeted programmes, complaint summaries and enforcement actions undertaken during the reporting period. During the year the annual dairy effluent compliance programme and report was completed as was the water metering compliance programme. Annual Compliance and Enforcement report released September 2010. Undertook a review of Council's Enforcement Policy.</p> <p>Staff also responded to written and verbal complaints and maintained a file of complaints with record of actions taken. The following breakdown records the type of complaints received over the year.</p> <table data-bbox="810 1249 1166 1541"> <tr><td>Noise</td><td>1030</td></tr> <tr><td>Land Use</td><td>244</td></tr> <tr><td>Discharges – Air</td><td>254</td></tr> <tr><td>Discharges – Water</td><td>42</td></tr> <tr><td>Discharges - Land</td><td>88</td></tr> <tr><td>Water takes</td><td>25</td></tr> <tr><td>Rivers</td><td>21</td></tr> <tr><td>Coastal</td><td>5</td></tr> <tr><td>Rubbish</td><td>90</td></tr> <tr><td>Abandoned vehicles</td><td>75</td></tr> <tr><td>Other</td><td><u>118</u></td></tr> <tr><td></td><td>1992</td></tr> </table> <p>(cf 2131 2009/2010)</p>	Noise	1030	Land Use	244	Discharges – Air	254	Discharges – Water	42	Discharges - Land	88	Water takes	25	Rivers	21	Coastal	5	Rubbish	90	Abandoned vehicles	75	Other	<u>118</u>		1992
Noise	1030																								
Land Use	244																								
Discharges – Air	254																								
Discharges – Water	42																								
Discharges - Land	88																								
Water takes	25																								
Rivers	21																								
Coastal	5																								
Rubbish	90																								
Abandoned vehicles	75																								
Other	<u>118</u>																								
	1992																								

ENVIRONMENT AND PLANNING

ENVIRONMENTAL EDUCATION, ADVOCACY AND OPERATIONS

What We Do

This activity involves those Council activities that seek to encourage good environmental outcomes through education and advocacy and other non-regulatory methods and also the undertaking of works and services in conjunction with land owners. In particular undertake catchment stabilisation, riparian protection, and habitat enhancement work and pest management operations. This activity also involves follow-up monitoring at the former Fruitgrowers Chemical Company site at Mapua and civil defence and emergency management functions. It also includes Council's environment education function and associated events like, Ecofest, Enviroschools and Environment Awards.

Why We Do It

Council is keen to promote good environmental outcomes by non-regulatory means where this is cost effective and in those situations where active involvement in work programmes yields community support and involvement. Council undertakes civil defence responsibilities as required by the Civil Defence Emergency Management Act 2002 in conjunction with Nelson City Council to ensure community awareness of, and preparedness to respond to, emergency events.

Our Goal

The Environmental Education, Advocacy, and Operations activity goals are to:

1. See improved practices in the use, development, and protection of the District's resources and to minimise damage to the environment through inappropriate practices or the incidence of pests and other threats to the quality of the environment we enjoy.
2. Build a resilient community where the potential effects of "all hazards" have been minimised and the community is ready to respond in the face of natural hazard events and emergencies.

How this activity contributes to the Community Outcomes

- By managing animal and plant pests, working with landowners and others to protect biodiversity, soil and water sustainability, and encouraging responsible environmental behaviours, we seek to ensure Tasman remains special.
- By encouraging and working with industries, community groups, and the public we seek to manage risks to, and effects on, Tasman's urban and rural environments.
- By promoting best practice and efficiency measures in the design and use of important utility services.
- Our civil defence and emergency management system is designed to promote safety of people and a resilient community.
- By promoting an appreciation of culture and heritage through the annual Environment Awards and targeted funding to heritage and waimaori projects.
- Participation in headline activities like Sea Week, Enviroschools, and Ecofest allows different sections of the community to participate learn and teach each other about matters relating to community well-being.
- We encourage people to be involved in making preparations in the event of a civil emergency and work with landowners to take responsibility for their actions that might have negative environmental consequences.
- We encourage people to adopt best practice in relation to their use of resources such as land, water, air, and the coast.

Our levels of service

We will work with resource users, stakeholder groups and the public to promote environmentally responsible behaviour, to encourage soil conservation and riparian planting, to maintain and enhance biodiversity.

We will contribute the regional share of funding to support the efforts of the Animal Health Board in managing the spread of Bovine Tb in the District

We will provide pest management services in Tasman, and under contract to Nelson City, to ensure the incidence of pests does not threaten the economic performance of our productive sector or place at risk the quality of the environment we enjoy.

We will have in place a civil defence and emergency management system that is designed to promote safety of people and a resilient community in the event that emergencies may occur.

How We Measure Progress

The level of community support for Council's	68% fairly satisfied or better with 27% not
--	---

ENVIRONMENT AND PLANNING

environmental education projects and events is rated as fairly satisfied or better through community surveys. [Target 75%]	knowing enough to comment.
That the number of cattle and deer herds infected with bovine Tb or on movement control reduces each successive year. [Target: Annual reduction from previous year]	1 herd under movement control as at 30 June 2011 (compared to 2 as at 30 June 2010)
Timely reporting of pest management operations in accordance with requirements of the Biosecurity Act. [Target: Annual report by November each year]	Annual report on Pest Management Operations reported to Council 16 December 2010.
The level of community support for Council's civil defence emergency management system is rated as fairly satisfied or better through community survey. [Target: 75%]	53% of residents fairly satisfied or better with 36% not knowing enough to comment (56 % and 37% being the equivalent 2009/2010 figures).

Major Activities

Identify and promote opportunities for achieving sustainable management of natural and physical resources through implementing Council's Environmental Education Strategy and education and advocacy for sustainable environmental management practices, including working with Enviroschools and other community groups.	A very successful Environmental Festival "Ecofest" was held in August 2010 and Environmental Awards programme was run in November 2010. A successful community beach clean up was held in October 2010.
Undertake soil conservation, land management, biodiversity and stream protection works in conjunction with affected landowners.	Soil conservation, land management and stream protection works in conjunction with affected landowners continues in accordance with the approved programme. Produced Guidelines on sediment and erosion control, stream crossings and stream/ river works. The activities of the Tasman Environmental Trust are recorded in the minutes of their two-monthly meeting and in their Annual Report. More than \$17,000 was awarded to six projects in the June 2011 funding round from the Cobb Mitigation Fund. Ecological reports have been provided to 177 landowners and 219 properties have been surveyed Biodiversity Forum meetings were held in 8 October 2010 and 20 May 2011
Undertake pest management operations including control of designated plants in sites of high public value in accordance with criteria in the Regional Pest Management Strategy and to contribute towards the Animal Health Board bovine Tb vector control programme.	Pest management operations were carried out in accordance with the Operational Plan prepared under the Tasman-Nelson Regional Pest Management Strategy. The results are summarised in the Review of the Annual Operational Plan review (to be released by November 2011). Council continues to provide funds to the Animal Health Board's Bovine Tb Vector Management programme in Tasman District.
Monitor the environment around the former Fruitgrowers Chemical Company site at Mapua.	Ongoing monitoring undertaken with results showing a continued reduction in contaminant residues
Review and implement the Nelson Tasman Civil Defence Emergency Management Group Plan.	Civil Defence responded to a heavy rainfall event in Golden Bay and Murchison December 2010 involving evacuation of homes and provision of emergency welfare support. On going work developing community plans in the areas of Golden Bay, Murchison and Mapua. Commenced work to review and update the regional civil defence plan.

ENVIRONMENT AND PLANNING

REGULATORY SERVICES

What We Do

This activity involves the provision of advice and discharging statutory functions in the areas of public health, building, sale of liquor, hazardous substances, animal control, rural fire, parking and maritime administration. It involves assessing and processing permit and registration applications, the administration of bylaws, and associated monitoring and enforcement action.

Why We Do It

Council is required by law to receive and process licence applications and statutory registration systems, to inspect, monitor and enforce compliance with these statutory requirements. There is also an expectation from the community that we will uphold and administer these requirements in the interests of health and safety.

Our Goal

We aim to see development of the District that achieves high standards of safety, design and operation with minimum impact and public nuisance and to provide excellent customer service in providing information on development opportunities and in processing permits and licences.

How this activity contributes to the Community Outcomes

- Managing risk from use of hazardous substances in public areas, rural fire, and ensuring recreational boating is safe keeps Tasman special.
- The activity ensures that living environments are safe, and that the activities of others do not negatively impact on citizen's lives. Through ensuring buildings are well constructed, safe and weather tight, the activity contributes to the development of the District, and also ensures that the resale value of the community's assets are protected.
- Parking control ensures parking facilities are available to ensure public access to urban retailers and services.
- This activity safeguards the community's health and well-being by ensuring standards of construction, food safety, and registered premises operation are met and that liquor consumption and nuisances from dogs and stock, and risk from fire do not adversely affect quality of life.
- Safe boating and providing such things as ski lanes ensures community access to the coastal waters of Tasman.

Our levels of service

We will manage the storage and use of Hazardous Substances to ensure, to the extent possible, that risks from hazardous substances are properly minimised and managed.

We will provide building control services in a professional and timely manner to ensure building work is safe and in accordance with the NZ Building Code.

We will provide parking control services to facilitate the public's access to urban retailers and services, respond to any misuse of disabled parking, and remove reported abandoned vehicles.

We will provide Maritime administration services to ensure Tasman's harbour waters are safe and accessible and that all known commercial operators are registered.

We will provide a sale of liquor regulatory service in association with other agencies to foster the responsible sale and consumption of liquor.

We will provide public health services to ensure that food provided for sale is safe, free from contamination and prepared in suitable premises; that other public health risks are managed through the appropriate licensing of premises and operations; and to reduce where possible the occurrence and spread of communicable diseases.

We will develop and administer appropriate bylaws designed to ensure that certain activities are administered in a timely and proficient manner with the aim of safeguarding health and safety.

We will provide Animal Control services to minimise the danger, distress, and nuisance caused by dogs and wandering stock and ensure all known dogs are recorded and registered.

For Rural Fire, to safeguard life and property by the prevention, detection, restriction and control of fire in forest and rural areas.

ENVIRONMENT AND PLANNING

How We Measure Progress

<p>Building Control: Applications for building consent and code compliance certificates (CCC) are processed within statutory timeframes. [Target: 100%]</p> <p>We maintain Building Consent Authority Accreditation.</p>	<p>94.3% of building consent applications were processed within statutory time frames (cf 92.5% in 2009/2010).</p> <p>86% of CCC applications were processed within the statutory timeframe (new measure).</p> <p>Reaccreditation as a Building Consent Authority was achieved March 2010 and is due for review October 2011</p>
<p>Parking Control: Compliance by not less than 80 out of every 100 vehicles parking in time controlled areas within the Traffic Bylaw, based on an annual snap survey. [Target: 80%]</p>	<p>Survey undertaken in August 2011 – 83 out of 100 vehicles complied - target achieved</p>
<p>Maritime Responsibilities: All known commercial maritime operators are appropriately registered. [Target: 100%]</p> <p>Residents rate their satisfaction with this activity as "fairly satisfied" or better in annual surveys. [Target: 80%]</p>	<p>All 36 known commercial operators appropriately registered</p> <p>47% of respondents were fairly satisfied or better, although 49% stated they did not know enough to comment which might not be unexpected given not everyone has a boat!</p>
<p>Liquor Licencing: All applications are processed in accordance with the Sale of Liquor Act. [Target: 100%]</p> <p>In conjunction with NZ Police, we detect no sale of liquor to minors through random controlled purchase operations (CPOs) run annually. [Target: At least two annual operations with no offences detected]</p>	<p>All 563 were processed in accordance with the Sale of Liquor Act.</p> <p>Conducted CPOs in September and December 2010 and April and June 2011. 44 premises inspected and only one offence detected in September 2010.</p>
<p>Public Health: All registered food premises are inspected at least once annually for compliance and appropriately licensed. [Target: 100%]</p> <p>All registered food premises failing to comply with standards are re-inspected within a two month period. [Target: 100%]</p> <p>All other registered premises are inspected at least once annually for compliance and appropriately licensed. [Target: 100%]</p>	<p>100% of premises were inspected as at 30 June 2011. Additional resources were brought in to clear a build up of compliance issues to deal with.</p> <p>Of the premises identified with significant non-compliance, 100% have been reinspected within the two month timeframe</p> <p>100% as at 30 June 2011</p>
<p>Hazardous Substances: We respond to any reported incidents relating to hazardous substances within 2 hours. [Target: 100%]</p>	<p>No incidents reported</p>
<p>Bylaw Administration: Ensure all known operators of certain activities are appropriately licensed. [Target: 100%]</p>	<p>All known operators appropriately licensed.</p>
<p>Animal Control: All known dogs are registered annually by 30 September. [Target: 97%]</p> <p>We respond to high priority dog complaints within 60 minutes, 24 hours a day, seven days a week. [Target: 100%]</p>	<p>96.2% of the 10,257 known dogs were registered as at 30 September 2010</p> <p>Response times were achieved although in some cases this was via a telephone call rather than on-site presence</p>

ENVIRONMENT AND PLANNING

Rural Fire: The area of forest lost through fire annually does not exceed 20 hectares.	12hectares of damage to production forest from rural fires.
---	---

Major Activities

Respond to enquiries and undertake inspectorial responsibilities under the Health Act, Building Act, Sale of Liquor Act, and the Hazardous Substances and New Organisms Act, and associated Council bylaws.	<p>Plan checking and inspectorial responsibilities under the Health, Building, and Sale of Liquor Acts and Council bylaws were discharged using professionally trained and qualified staff and contractors.</p> <p>94.3% of 1,482 building consents were processed within the statutory processing time limit (cf 92.5% in 2009/2010). The average processing time was 11 days (cf 13 in 2009/2010).</p> <p>Work undertaken to prepare for reaccreditation inspection as a Building Consent Authority in October 2011.</p> <p>Gambling Policy Review completed September 2010</p> <p>Prepared and adopted a Freedom Camping Bylaw May 2011. .</p>
Carry out Harbour Board functions including implementation of the Joint Oil Spill Contingency Plan (with Nelson City Council).	<p>Harbourmaster Annual report for 2010 submitted August 2011. Another busy summer in 2011 where maritime responsibilities were carried out. One oil spill training exercise completed.</p> <p>Registered 36 commercial operators to operate within Tasman District harbour limits (cf 30 in 2009/2010). Three infringement notices were issued.</p> <p>No oil spills reported</p>
Carry out animal control responsibilities.	<p>The Council continues to administer the Dog Control Bylaw with service delivery being undertaken by Control Services (Nelson) Ltd. There were 5,676 rural and 4,644 urban dogs registered in Tasman District. Council's contractors responded to complaints regarding wandering stock and dogs and impounded animals as required. 120 Dog Control Infringement Notices were issued, 96 of which were for unregistered dogs. (cf 81 in 2009/2010). A separate annual report to the Secretary of Local Government is available for further details.</p>
Carry out parking control responsibilities under Council's Parking Bylaw.	<p>Parking Enforcement responsibilities were contracted out to Control Services (Nelson) Ltd. 1,370 infringement notices were issued (cf 1569 in 2009/2010) during the year along with other advisory warnings concerning parking. Public assistance continues to be offered while wardens are on duty</p>
Ensure fire risk in the District is effectively managed through supporting rural fire parties and the Waimea Rural Fire Committee.	<p>Fire risk in the District is being effectively managed by the Waimea Rural Fire Authority through a contract with Rural Fire Network and the ongoing support of rural fire parties.</p>

ENVIRONMENT AND PLANNING
**Environment and Planning Department
 Applications Processed
 1 July 2010 to 30 June 2011**

1. Resource Management Act				
Type of Consent	Outcomes 2009/10		Outcomes 2010/11	
Land Use	583		444	
Subdivision	170		118	
Title Plans	146		103	
Completion Certificates	133		111	
Certificates of Compliance	2		4	
Water	58		221	
Discharge	133		115	
Coastal	16		15	
Resource Consent Transfers	120		65	
2. Building Act				
Type of Consent	2009/10		2010/11	
	No. Issued		No. Issued	
Dwelling	275	78.6M	339	77.4M
Commercial	31	14.6M	33	17.1M
Other	1,193	45.8M	1,155	30.5M
1.1 Totals	1,499	\$139M	1,527	\$125M
3. Licences				
Type	2009/10		2010/11	
	No. of Certificates Issued		No. of Certificates Issued	
Food Premises	304		279	
Hairdressers	37		31	
Camp Grounds	31		19	
Hawkers/Mobile Shops	46		37	
Others	16		46	
Commercial Vessel Operators	30		36	
4. Sale of Liquor				
Type of Licence	2009/10		2010/11	
	No. of Licences Issued		No. of Licences Issued	
Manager's Certificate	304		285	
On and Off Licence	90		125	
Club Licence	15		13	
Special Licence	95		119	
Temporary Authority Order	39		21	
5. Other				
Type	2009/10		2010/11	
Land Information Memoranda	483		467	
Complaints Received	2131		1992	
Abatement Notices Issued	74		95	
Infringement Notices Issued	45		36	
Enforcement Orders	3		0	
Excessive Noise Direction	51		39	

Appendix 3

Waimea Inlet Forum
waimea.inlet@gmail.com

The Chief Executive
Tasman District Council
189 Queen St
Private Bag
Richmond 7050

Waimea Inlet Forum



20 May 2011

Dear Paul Wylie,

I am writing to you on behalf of the group of people who are working on the Waimea Inlet Forum. We have recently become aware that there is some uncertainty within the Council about who and what the Forum is and how it is operating. This letter seeks to provide you, and relevant staff, with information to assist you to engage with the Waimea Inlet Forum working group to further our common objectives for the future of the Waimea Inlet.

Nelson City Council and Tasman District Council, in conjunction with the Department of Conservation and Nelson-Marlborough Fish and Game Council, adopted the Waimea Inlet Management Strategy in 2010. The Waimea Inlet Strategy is a support document under the Councils' Long Term Council Community Plans and guides the Councils' decision-making across all departments influencing not only statutory resource management but also provision of infrastructure, services and all areas of council involvement.

The Waimea Inlet Strategy proposes the Waimea Inlet Forum (the "Forum") as a platform for:

- Connecting individuals, groups and agencies
- Integrating activities
- Setting priorities
- Exchanging information and experiences on how to make improvements, including where to get advice and materials
- Sharing results about what has been achieved, what has worked well, and how results could be improved.

The Working Group for the Forum has been meeting regularly and the first of the public Forum meetings was held in February 2011. One of the recent projects for the Forum Working Group has been to assist the Nelson-Tasman Cycleway trust to realize its vision of a cycleway through the area and around the Waimea Inlet that showcases the beauty of the Inlet without causing damaging impacts to the sensitive estuarine environment and its inhabitants. A collaborative approach has enabled all parties (NCC, TDC, Forest & Bird, Fish & Game, the Forum, Cycleway trust) to make good progress with considerable work being undertaken by all participants to explore options to minimize harm in those areas at most risk.

The Forum Working Group has been established to provide a core group of people who are able to provide time on a voluntary basis to ensure that the objectives of the Waimea Inlet Strategy are pursued and that the community can have effective input into issues at regular Waimea Inlet Forum meetings. The Working Group is open to any participants and is regularly joined by those who have a special interest or expertise in a subject being discussed.

The Working Group consists of:

- Philip Wilson; email Philip.Wilson@nelsonpine.co.nz
- David Melville, email david.melville@xtra.co.nz
- Elspeth Collier ph 5402214; email elspeth@matahuacottages.co.nz
- Chris Edmonds email cedmonds@coastalgroup.co.nz
- Gillian Bishop ph 5440433; email mb7@xtra.co.nz
- Martin Conway ph 5423712; email titoki98@xtra.co.nz
- Beth Bryant email tonyandbeth@ihug.co.nz
- Verdun King ph 5424250; email patrickocat@xtra.co.nz

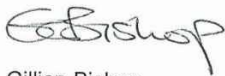
Glen Lauder will continue to provide inspiration, support and advice to the Working Group. The Group also appreciates the support provided by Counselor Brian Ensor who has agreed to represent the TDC on the Waimea Inlet Forum. Brian is currently chairing the meetings of the Nelson-Tasman Cycleway Trust and other stakeholders.

Linda McLintoch provides secretarial support for the Waimea Inlet Forum meetings and maintains an extensive database of interested individuals and organizations. The Forum has an email address waimea.inlet@gmail.com Communications may also be directed to any of the above named members of the Working Group

There are many projects currently underway around the Waimea Inlet; Waimea River Park development, Plant Right Now (support for private restoration work), Sandeman Reserve developments, Bell Island Spit restoration, Cycleway development, Pearl Creek restoration, pest eradication and many others. Some of these are new projects and others have been underway for some years. These projects complement the work being managed by NCC and TDC and the policy work at Government level. Members of the Working Group are active participants on many of these projects.

The Waimea Inlet Forum provides an opportunity for community input and communication on matters affecting the future of the Waimea Inlet. One of the important roles for the Forum Working Group is to organise regular meetings of the Forum and ensure that the issues raised by the community are communicated to relevant parties, especially the NCC and TDC.

Yours sincerely



Gillian Bishop
Waimea Inlet Forum Working Group

Cc: The Mayor, TDC