

2.2.3 Key Design Issues

The Millennium Centre concept recognises the prime opportunity that exists to obtain nationally significant conference facilities very economically by co-locating them with a performance auditorium. The foyer spaces, and indeed most of the elements of an auditorium, can provide many of the functions of a conference centre. The tiered-seat auditorium, stage area, green room, and foyers can all be used as break-out spaces, for lunch and coffee breaks, registration areas, and commercial displays; and the only primary addition required to create a very versatile conference venue is a large flat floor meeting and function room.

The conference facilities built into the Millennium Centre concept are modelled on the very successful Rotorua Convention Centre opened in March 1995. Figure 2.3 shows the way the ground floor foyer areas can be divided by movable screen walls to create workshop and display spaces, and figure 2.5 shows the large meeting or function room on level 3 which can be divided into 5 smaller meeting rooms if required. With the addition of the main auditorium for larger meetings and plenary sessions, and the drama theatre which can be used with its tiered seating extended or retracted, the centre will be a most effective venue for a very wide range of convention activities. In all, the centre contains up to 12 separate meeting spaces.

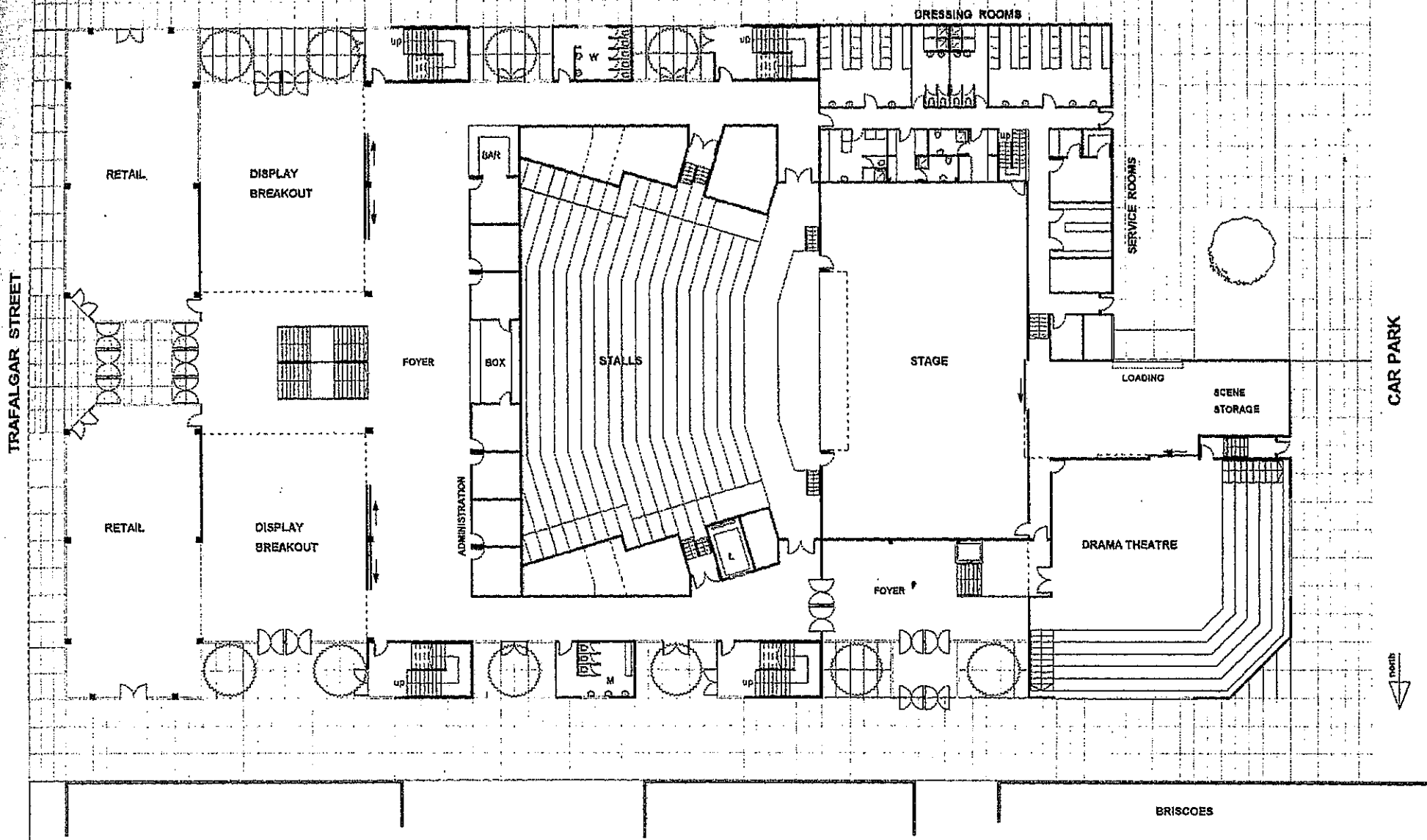
Figure 2.16 Conference meeting room capacities

Area	Size m ²	Conference seating	Informal seating	Banquet seating	Cocktail/conc
Main auditorium		1420			
Function room	896	400	500	750	1000
Drama Theatre	225	250	120	160	300
Level 1 Foyer	490		250		600
Green room	80	30	40		60
Level 2 foyer	158				200
Stage	390	170		250	

N.B.

- The level 1 foyer can be subdivided into two separate rooms either side of the main entrance, each of 166m², which will be ideal display spaces during a conference or spaces for corporate functions etc. for up to 200 people prior to a performance in the auditorium.
- Each of these rooms will seat approximately 90 people informally.
- The Function Room is a very versatile space that can be subdivided into up to five separate rooms with movable walls, suitable for simultaneous conference sessions, and meetings or other activities for smaller groups.

Figure 2.3 Nelson Millennium Centre Concept Level 1 Floor Plan

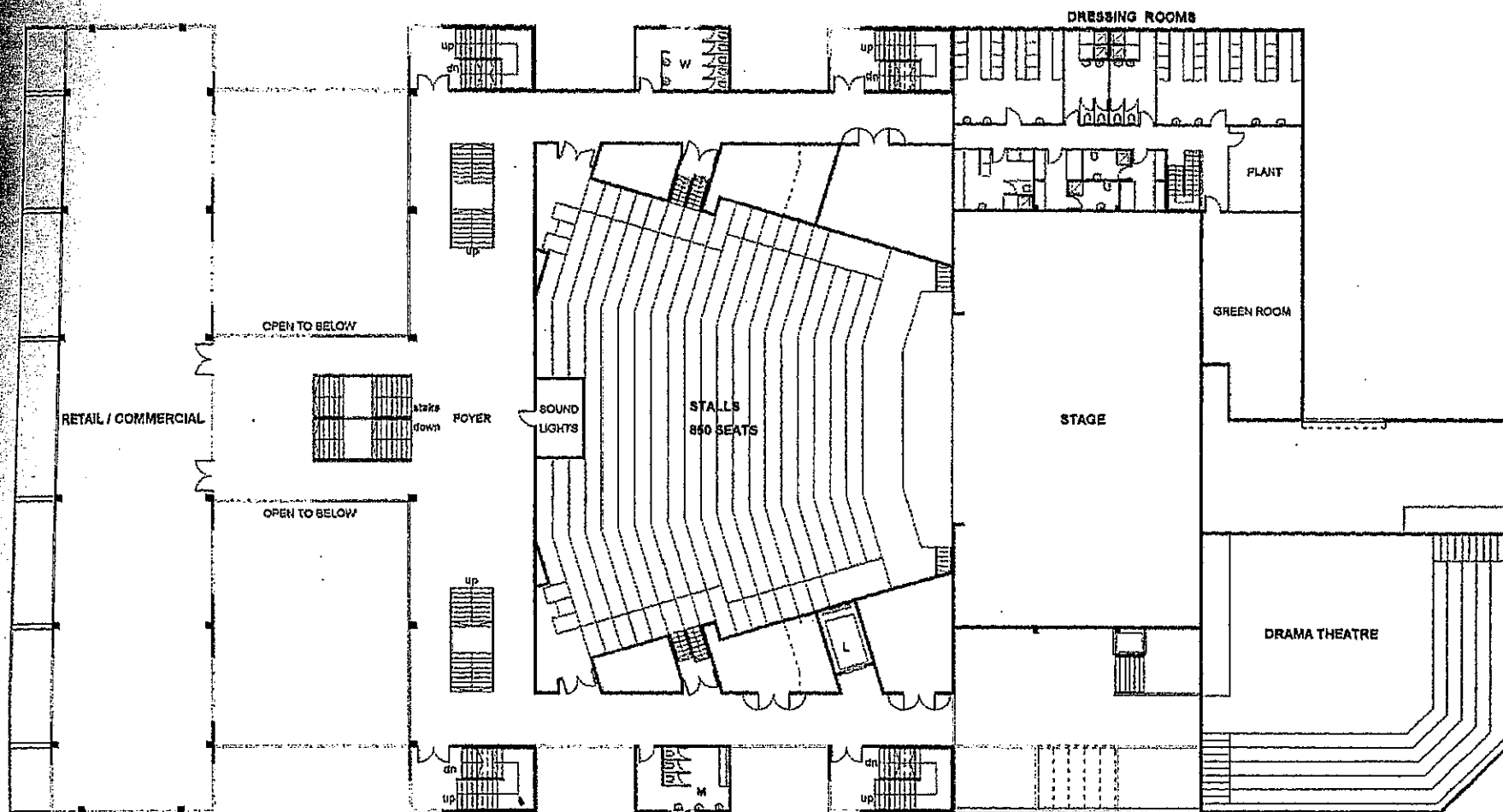


CAR PARK



BRISCOES

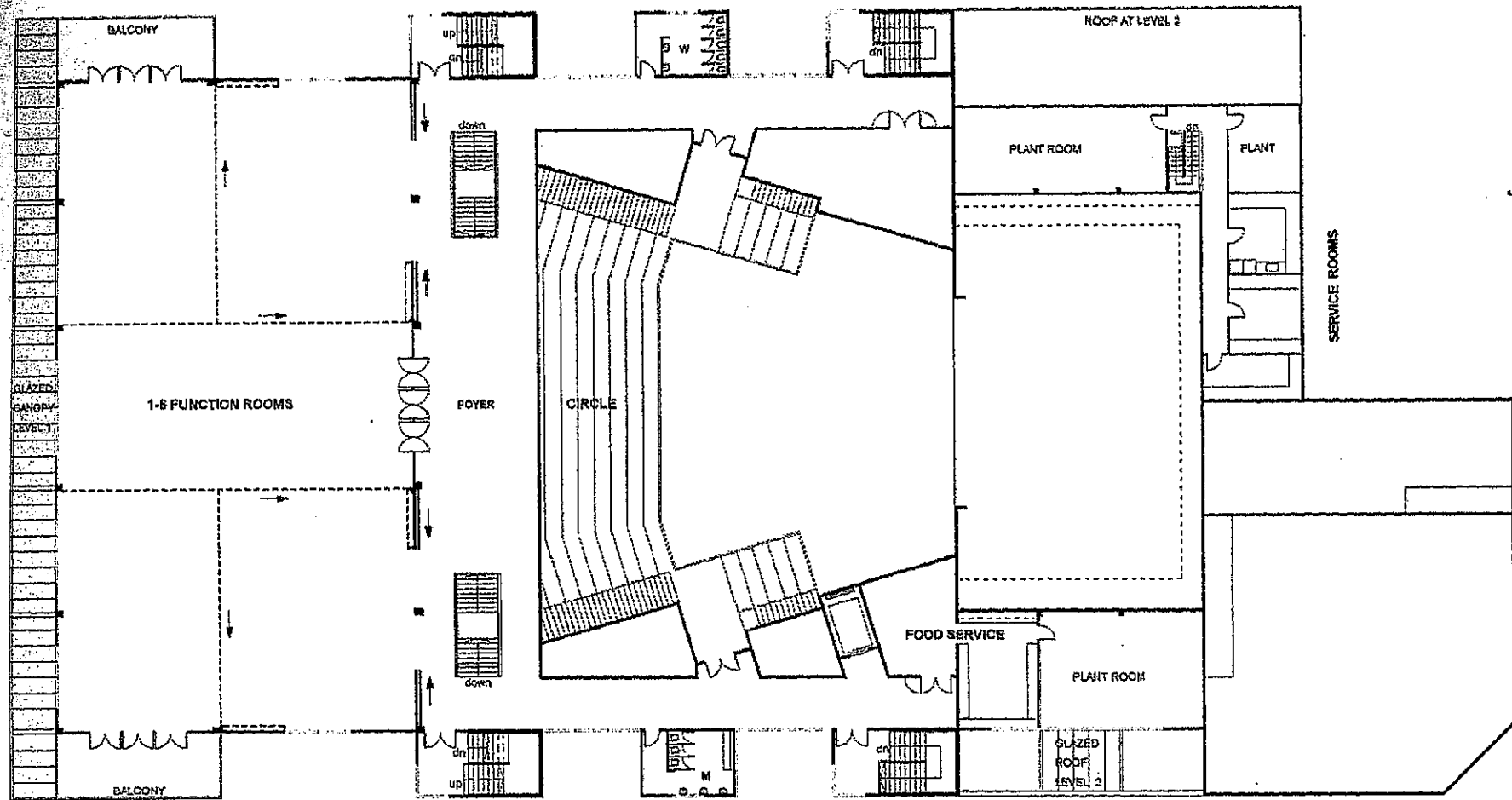
Figure 2.4 Nelson Millennium Centre Concept Level 2 Floor Plan



THE MILLENNIUM CENTRE LEVEL 2

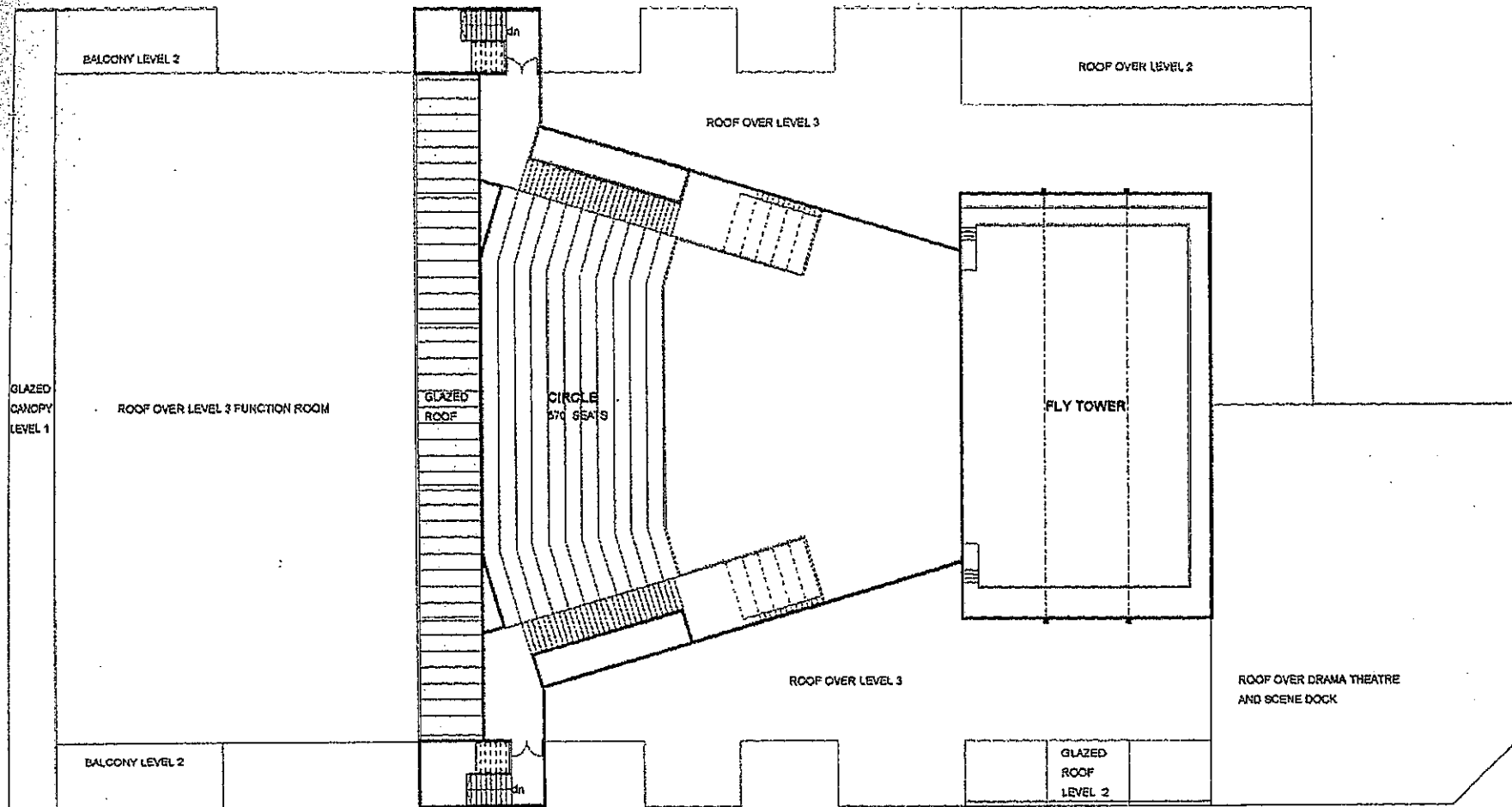
UPPER STALLS, DRAMA THEATRE AND COMMERCIAL OFFICE SPACE

Figure 2.5 Nelson Millennium Centre Concept Level 3 Floor Plan



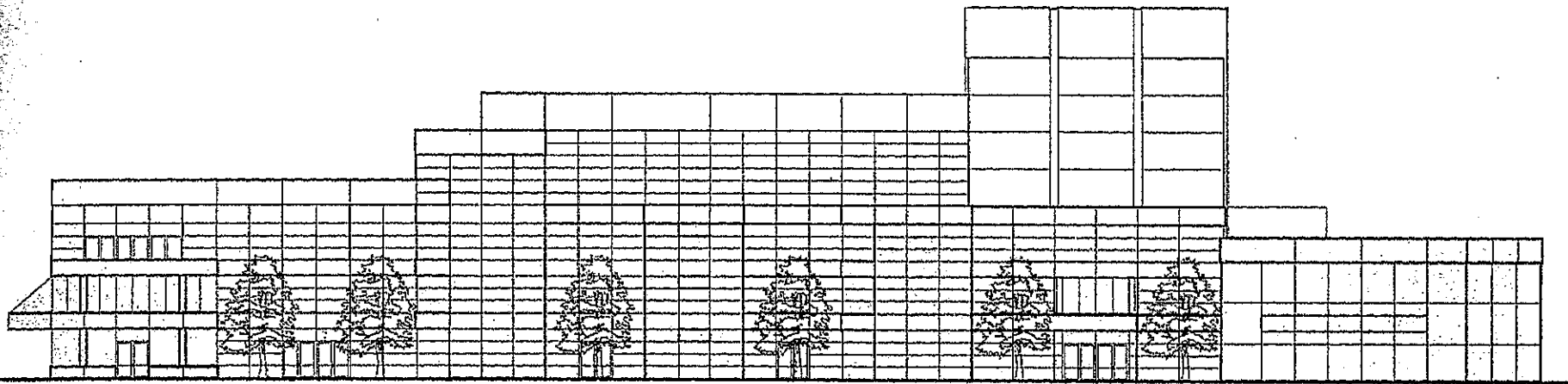
THE MILLENIUM CENTRE LEVEL 3
LOWER CIRCLE AND FUNCTION ROOM

Figure 2.6 Nelson Millennium Centre Concept Level 4 Floor Plan



THE MILLENNIUM CENTRE LEVEL 4
UPPER CIRCLE AND FLY TOWER

Figure 2.7 Nelson Millennium Centre Concept
North Elevation

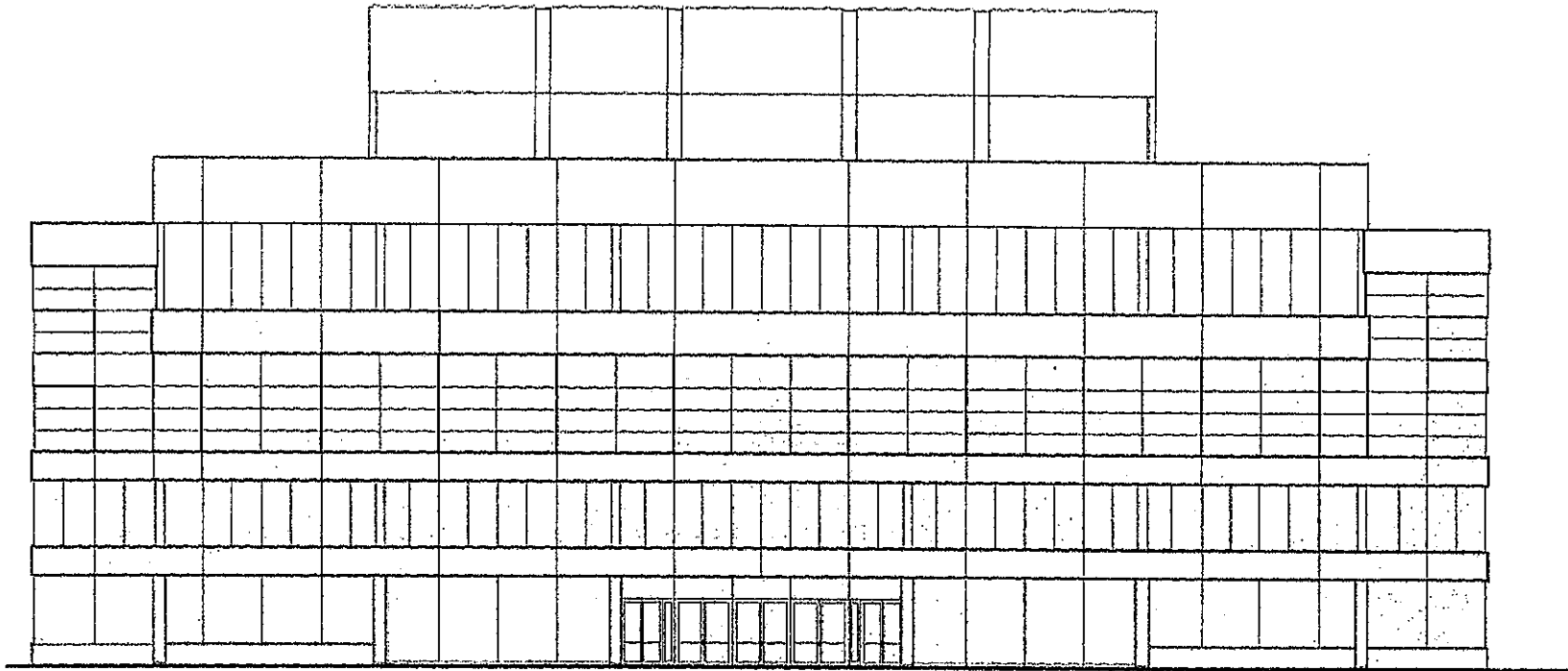


THE MILLENIUIM CENTRE

NORTH ELEVATION (OPPOSITE BRISCOES)

scale 1:400

Figure 2.8 Nelson Millennium Centre Concept
East Elevation

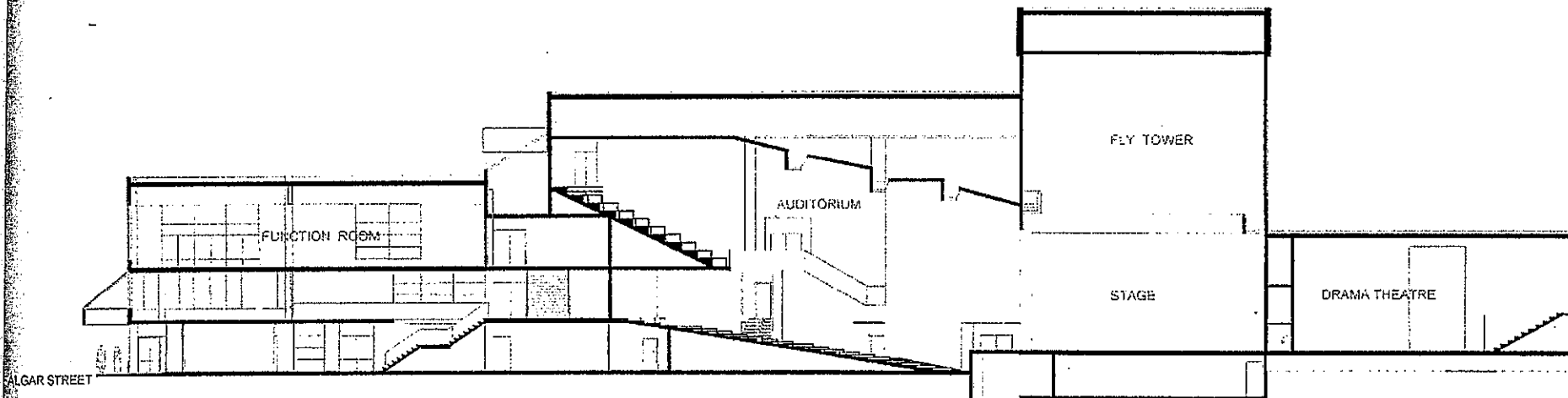


THE MILLENIUM CENTRE

EAST ELEVATION (TRAFALGAR STREET)

scale 1:250

Figure 2.9 Nelson Millennium Centre Concept
Section Through the Building



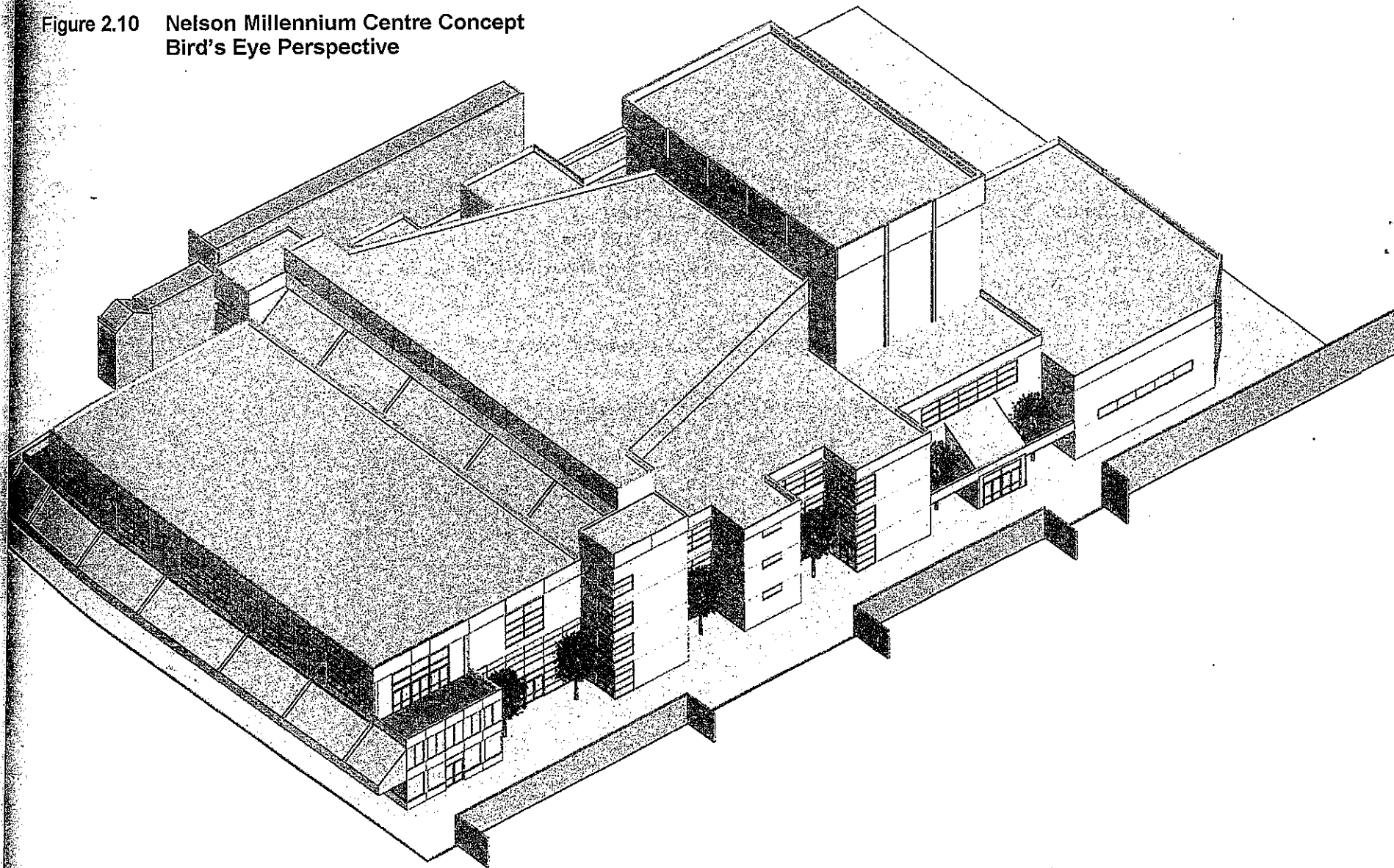
THE MILLENIUM CENTRE

SECTION

(THROUGH CENTRE OF FOYER AND STAGE AND THROUGH DRAMA THEATRE)

Scale : 1 : 400

Figure 2.10 Nelson Millennium Centre Concept
Bird's Eye Perspective



Appendix 3**Millennium Centre Concept
Specifications For Costing Purposes****GENERAL**

Major building elements: Main auditorium seating 1450 with proscenium stage and fly tower,
Conference centre consisting of large function hall seating 800 and foyer display/breakout areas,
Generous foyer areas feeding the auditorium and conference centre on three levels,
Drama theatre seating 250 sharing facilities with main stage.
400 m² of retail space on ground floor street frontage
555 m² of commercial office space on level 2, capable of being absorbed into the conference centre if required.
All spaces to be designed for maximum flexibility and multiple uses.

Building construction: Lightweight construction but consistent with acoustic isolation requirements
Composite frame of reinforced concrete columns and steel trusses.
Four fire stairs to service the combined occupancy of theatre and function rooms.
Auditorium, drama theatre, function room in F60 fire cells
Sprinklers throughout
Quality proprietary light weight external cladding system e.g. baked enamel or zinc on insulated backing
Interior cladding of robust quality finishes consistent with flame spread and acoustic requirements
All public areas to have "sparkle", auditorium to be "warm and inviting"
Single disabled persons/service lift to all levels. Disabled access to all public areas of the venue and stage.
Zone controlled air conditioning system throughout

MAIN AUDITORIUM

Seats 1420 on two levels, 850 stalls, 570 circle, all in continental seating with rows at 1.00 m centres
Stage 26 m wide x 15 m deep, sprung wooden floor at 1.2 m height, 5 x 13 m orchestra pit on lift screws.
Full height fly tower covering full stage, with 56 counterweight suspension sets
Full orchestra sound shell, stage draperies, fire curtain, motorised curtain etc.
Large vehicle access to stage from loading bay and scene dock
Permanent stage lighting system on three bridges, follow spots, control room, dimmer room etc.
Rooms for manager and security, switchboard and dimmers, wardrobe, properties and lighting store
Plant rooms, secure store and refuse store
Dressing rooms For 76 performers (on two levels), separate dressing rooms with facilities for principals.
Green room 80 m², seats 40 informally

Appendix 3 continued

Main Auditorium (cont.)

Sound Basic sound reinforcement, hearing impairment, production communication, CCTV and paging systems
Allowance for acoustic drapes to reduce reverberation time
Allowance for acoustic treatment of interior reflective surfaces

Seating cost allowance \$400 per seat

CONFERENCE CENTRE

Function room 896m² Seats 800 max. dining, 760 dining with dais and dance area, 400 conference seating with tables
Divides into five breakout spaces with movable walls.
500 chairs and 50 rectangular tables provided, remainder hired as required.

Level 1 Foyer 490 m² Accommodates 600 standing, 420 with display spaces in use
Movable screen walls to create 2 separate function/display spaces each 166 m²
Furnished bar, food service and office spaces on level 1

Kitchen Finishing kitchen with air ovens and insulated trolleys, caterers provide own tables, chairs, table linen, crockery etc.
Visual Aids Basic mobile projectors and screens available, sound systems and specialised requirements hired in by users.

DRAMA THEATRE

Seats 250 on roll out seating. Space doubles as rehearsal space for main stage with seats retracted
Stage Basic lighting grid, no permanent stage
Acoustic isolation from main auditorium
Access door to loading bay for large vehicles
Access to main auditorium dressing rooms etc.

Foyer Separate foyer area with disabled access lift
Internal access to main foyer

RETAIL AND COMMERCIAL

Level 1 Two 200 m² street frontage retail spaces for lease
Level 2 555 m² commercial rental space capable of being reabsorbed into the Centre in future if needed
Services by stairs from Street

