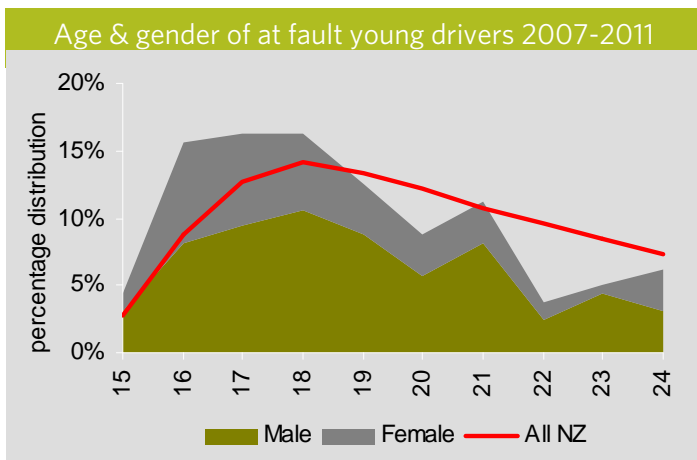
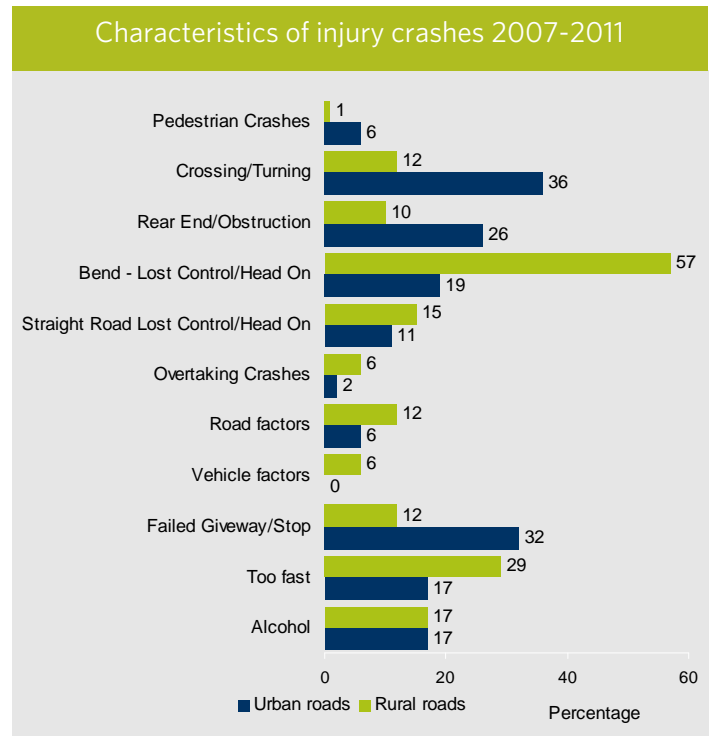
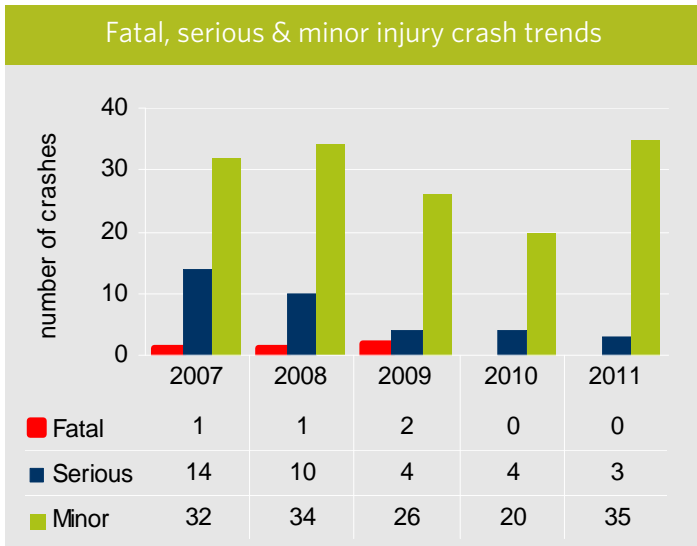


briefing notes crash analysis

a Safe System approach

Young Drivers - Tasman District

Increasing the safety of young drivers aged 15-24 years is a high strategic priority identified in Safer Journeys. Locally this issue is of concern due to the number of deaths and/or serious casualties, which reflects a high level of collective risk.



Further information about young driver injury crashes locally in 2007-2011:

Local roads

- In 105 crashes 3 deaths, 20 serious injuries and 157 minor injuries

Safe Speed

- Speed too fast for the conditions - 30 percent

Safe Use

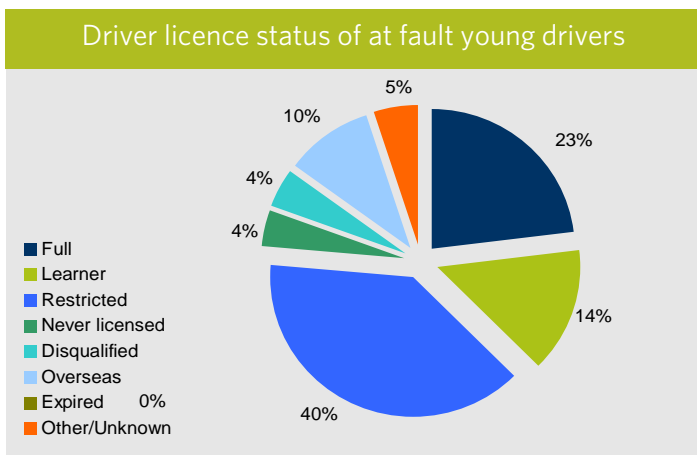
- Young drivers - 100 percent
- Alcohol & drugs - 20 percent

Safe Roads & roadsides

- Rural roads - 70 percent
- Intersections - 25 percent

Safe Vehicles

- Motorcyclists - 6 percent
- Trucks - 2 percent



State highways

- In 81 crashes 1 deaths, 28 serious injuries and 108 minor injuries

Safe Speed

- Speed too fast for the conditions - 20 percent

Safe Use

- Young drivers - 100 percent
- Alcohol & drugs - 12 percent

Safe Roads & roadsides

- Rural roads - 81 percent
- Intersections - 25 percent

Safe Vehicles

- Motorcyclists - 1 percent
- Trucks - 6 percent

Young Drivers - Tasman District 2007-2011

