

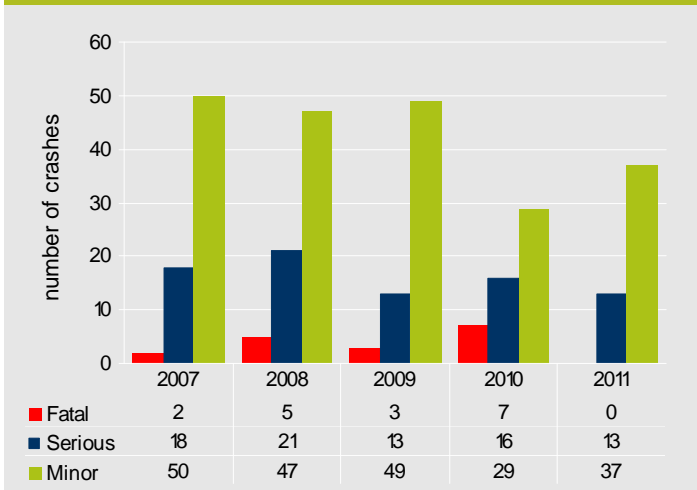
briefing notes crash analysis

a Safe System approach

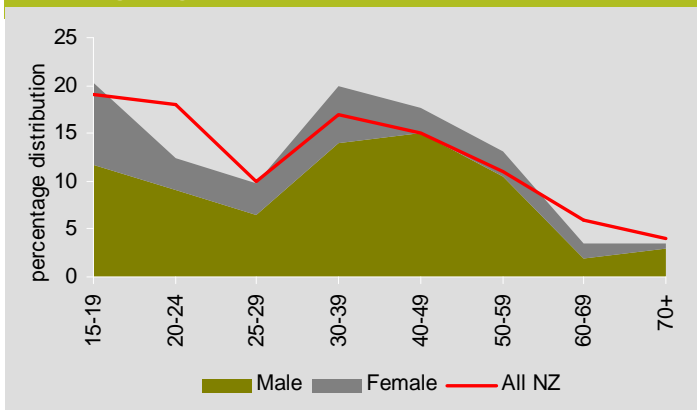
Rural road loss of control & head-on - Tasman District

Increasing the safety of rural roads and roadsides is a high strategic priority identified in Safer Journeys. Locally rural road loss of control/head-on crashes are of concern due to the number of deaths and/or serious casualties, which reflects a high level of collective risk.

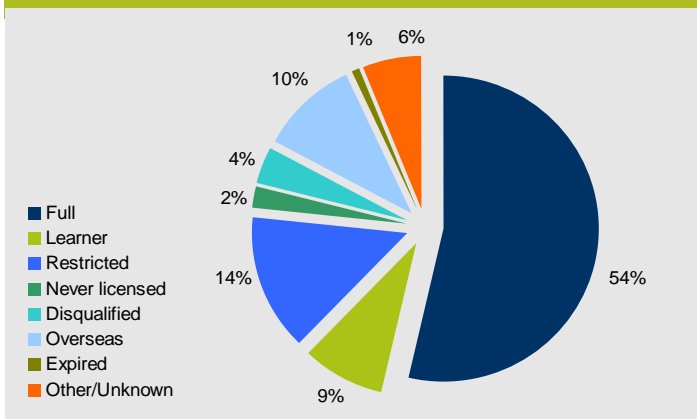
Fatal, serious & minor injury crash trends



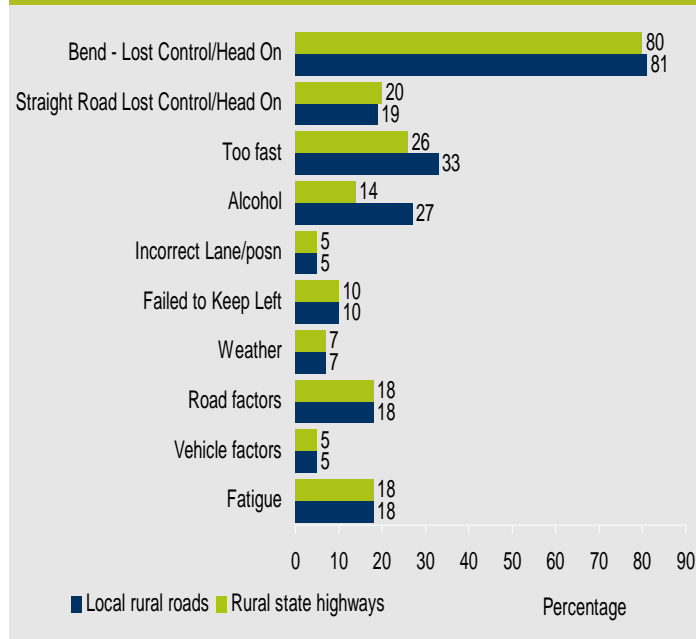
Age & gender of at fault drivers 2007-2011



Driver licence status of at fault drivers



Characteristics of injury crashes 2007-2011



Further information about these rural road injury crashes locally in 2007-2011:

Local roads

- In 142 crashes 6 deaths, 51 serious injuries and 150 minor injuries

Safe Speed

- Speed too fast for the conditions - 33 percent

Safe Use

- Young drivers - 45 percent
- Alcohol & drugs - 27 percent

Safe Roads & roadsides

- Rural roads - 100 percent
- Intersections - 8 percent

Safe Vehicles

- Motorcyclists - 18 percent
- Trucks - 4 percent

State highways

- In 168 crashes 11 deaths, 57 serious injuries and 173 minor injuries

Safe Speed

- Speed too fast for the conditions - 26 percent

Safe Use

- Young drivers - 23 percent
- Alcohol & drugs - 14 percent

Safe Roads & roadsides

- Rural roads - 100 percent
- Intersections - 5 percent

Safe Vehicles

- Motorcyclists - 12 percent
- Trucks - 9 percent

Rural road loss of control & head-on Tasman District 2007-2011

