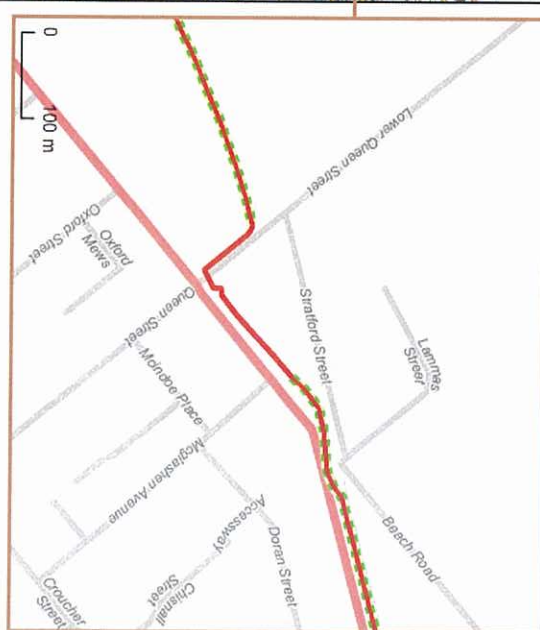
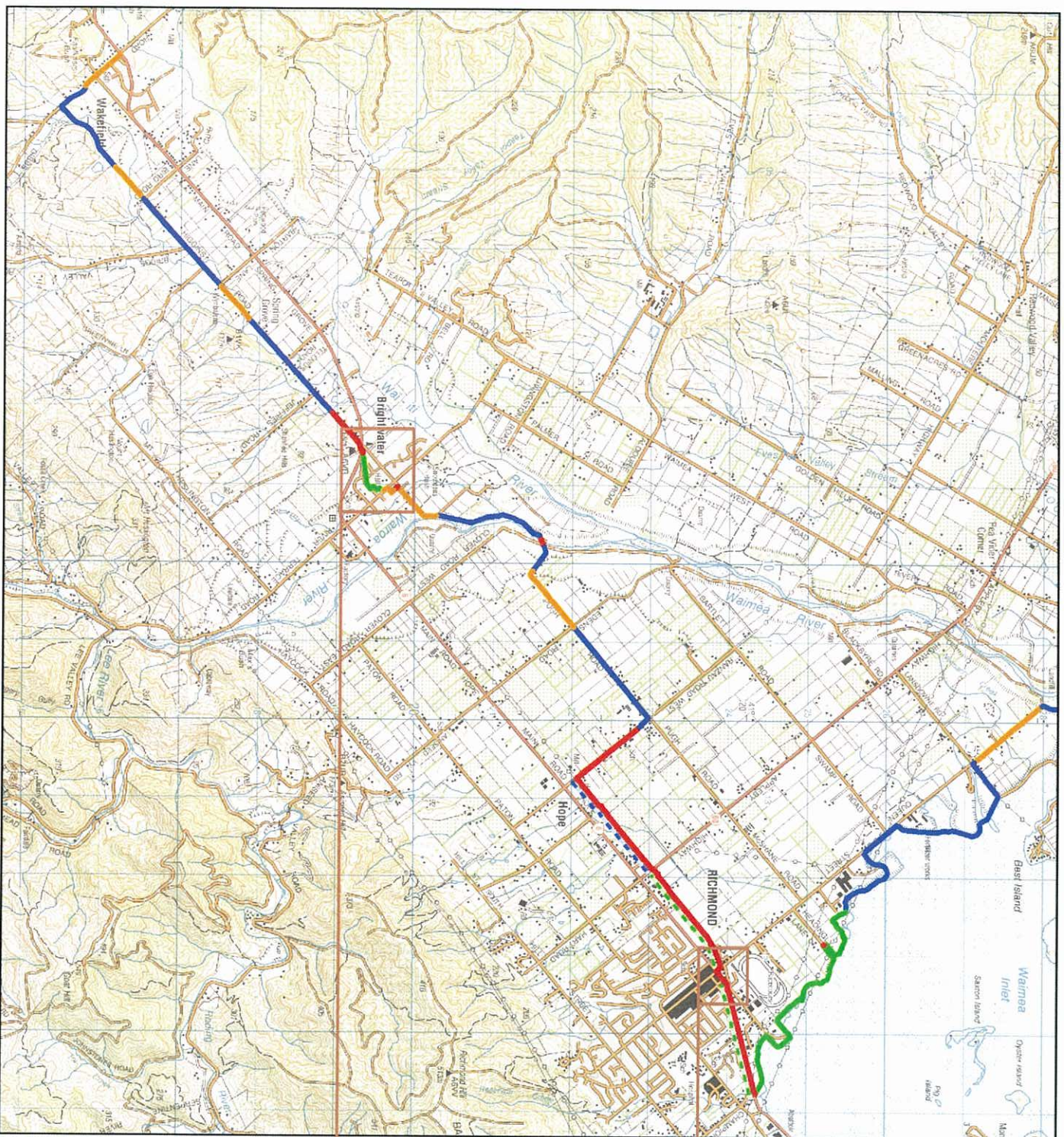




Tasman Great Taste Trail

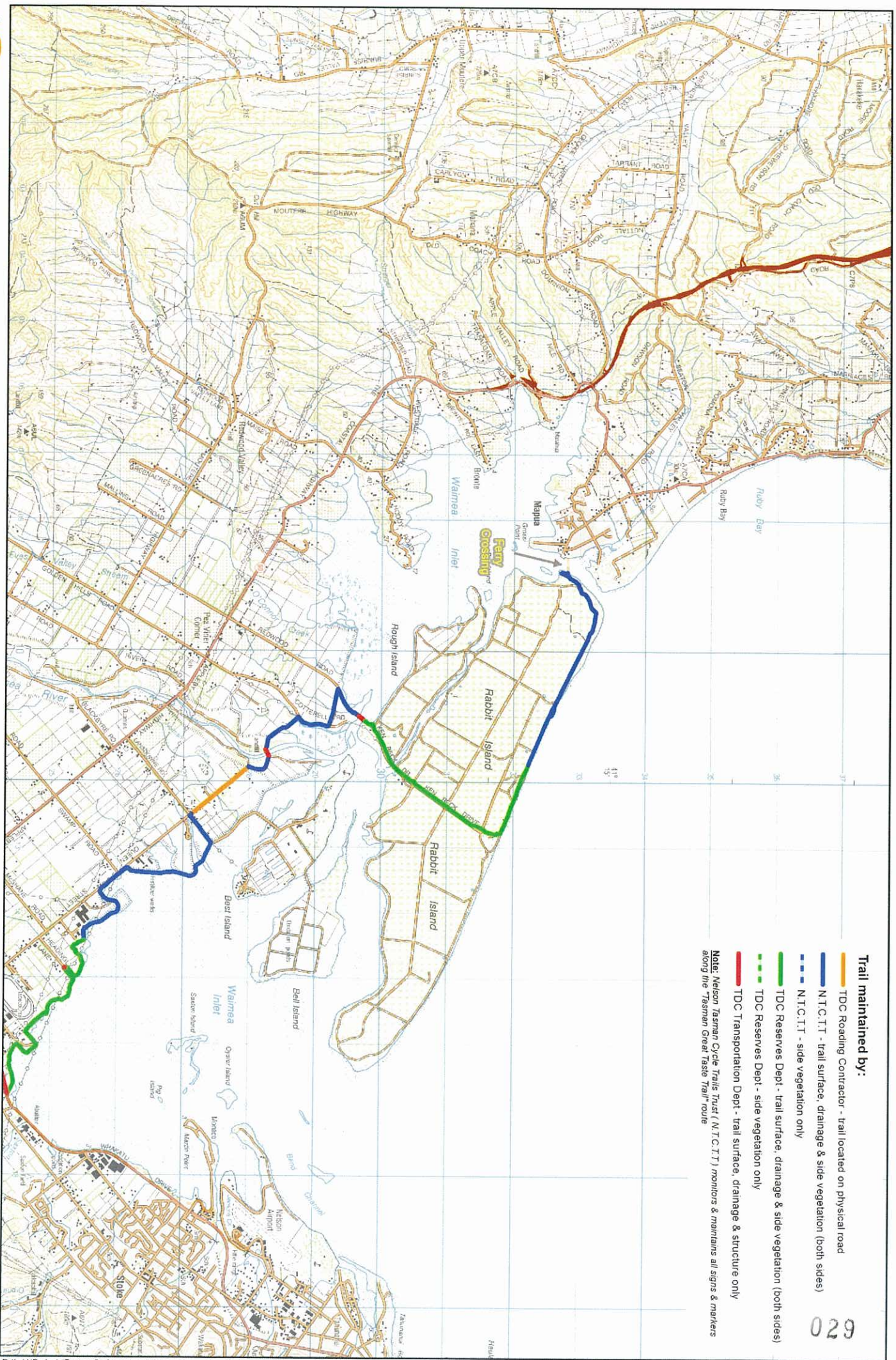
February 2012

Sheet 1



- Trail maintained by:**
- TDC Roadway Contractor - trail located on physical road
 - N.T.C.T.T - trail surface, drainage & side vegetation (both sides)
 - N.T.C.T.T - side vegetation only
 - TDC Reserves Dept - trail surface, drainage & side vegetation (both sides)
 - TDC Reserves Dept - side vegetation only
 - TDC Transportation Dept - trail surface, drainage & structure only
- Note:** Nelson Tasman Cycle Trails Trust (N.T.C.T.T) monitors & maintains all signs & markers along the Tasman Great Taste Trail route

NZTopo50 sourced from Land Information New Zealand. Crown Copyright reserved. The information on this map is prepared for indicative use only and is not intended for definitive legal, location or formal reference purposes.



Trail maintained by:

- TDC Roading Contractor - trail located on physical road
- N.T.C.T.T - trail surface, drainage & side vegetation (both sides)
- - - N.T.C.T.T - side vegetation only
- TDC Reserves Dept - trail surface, drainage & side vegetation (both sides)
- - - TDC Reserves Dept - side vegetation only
- TDC Transportation Dept - trail surface, drainage & structure only

Note: Nelson Tasman Cycle Trails Trust (N.T.C.T.T) monitors & maintains all signs & markers along the Tasman Great Taste Trail route



NZTopo50 sourced from Land Information New Zealand. Crown Copyright reserved. The information on this map is prepared for indicative use only and is not intended for definitive legal, location or formal reference purposes.