

NEWSLINE

PĀNUI

8 MAY 2020
ISSUE 471

VOTE
2020

LOCAL ELECTIONS

Abel Tasman National Park

Voting period extended in Motueka by-election

The voting period for the current by-election for the vacant Motueka Ward seat on the Tasman District Council has been extended to 12 noon on Tuesday 26 May.

Initially due to close at 12 noon on 12 May, the Electoral Officer, Sandra Hartley, has used her ability to extend the voting period under section 73 of the Local Electoral Act 2001 by 14 days to enable people to cast a valid vote.

“The number of voting papers returned so far is less than I would expect by this time in a by-election voting period”, said Ms Hartley. “I expect that some members of the public are finding it difficult to cast a valid vote during the COVID-19 Level Three restrictions.

Regardless of the reason, it is paramount people have the means to choose their preferred candidate.

“The current electoral legislation did not anticipate a by-election happening during a pandemic. I explored every avenue possible, however, there were no provisions in the legislation that would enable me or anyone else to pause the election process earlier or to delay the distribution of voting papers. I share the frustrations expressed by some Motueka residents. It certainly would have been sensible to have paused or delayed the distribution of voting papers, if I'd been able to do so legally.

“The one power I do have is to extend the voting period, once voting has started, by 14 days at a time, to enable voters to cast a valid

vote. This is what I am doing now. I think it is owed to the Motueka community to have a reasonable opportunity to vote in this by-election and to choose a candidate who can take their seat at the Council table without challenge”.

Completed voting papers should still be posted in your nearest NZ Post box up until Thursday 21 May 2020. After that, they can be taken to the Council's Motueka office and placed in the ballot box (if the office is open), or in the after-hours box.

If you have not received your voting papers, please ring 03 543 8554 or email sandra.hartley@tasman.govt.nz to arrange for a special voting document to be sent out to you.



For COVID-19 health advice and information, contact the Healthline team (for free) on 0800 358 5453 or visit the website [covid19.govt.nz](https://www.covid19.govt.nz)



MAYOR'S MESSAGE



It's a relief for many to get back to work under the Alert Level Three restrictions. Our district certainly has a busier feel to it now.

I encourage everyone to support the local businesses that have been able to reopen if they can, but the most crucial thing is to do it safely.

Minimise the times you need to leave the house – staying home is still the safest option. Use online

or telephone ordering and contactless delivery options whenever you can. Some businesses are offering safe collection points for goods too but don't lose sight of the physical distances. You always need to stay two metres away from

anyone who isn't in your bubble.

Let's stick with the rules and wait for an update on Monday 11 May about what our next steps will be. Be kind, be patient and keep doing the right thing.

Council services at Level Three

All the information below was correct as the time of publication. For the most up-to-date information you can visit our website, tasman.govt.nz. If you have questions, or an urgent need for food or essential supplies call us on 0800 50 50 75. Remember, we've made great progress but we're not there yet. Be kind, stay at home if you can, stay in your bubble and we'll get there together.

Resource Recovery Centres

Normal opening hours have resumed at most sites, but with limited services.

Sites are open for domestic customers for waste and greenwaste disposal only, using contactless transactions (**Paywave only, no cash. Usual limits will apply – check with your bank.**)

There is no recycling drop off, no reuse shop activity and no whiteware, hazardous goods or other materials where face-to-face contact or manual handling is required.

Please delay your trip to the Resource Recovery Centre or arrange contactless collection by a commercial waste company if possible.

Other services

- Our offices remain closed but you can contact us 24 hours a day, seven days a week by calling 03 543 8400.
- Library services are currently all happening online. If you're not already a library member, sign up for a digital membership to access lots of great resources and content. Visit the library website to get started.
- Playgrounds, boat ramps and community facilities remain

closed. You should still exercise close to home and remember to keep that two metre distance from others.

- Kerbside recycling and rubbish collection services are continuing as normal. Glass makes up around 50% of all recycling and continues to be sent to Auckland for recycling. The plant that processes other recycling is still closed and that is still being sent to landfill. We'll be working with our contractor to reopen this plant once alert levels drop, so please keep your recycling clean and dry so that we can process it when the plant re-opens.



New Motueka Library build to boost local construction, provide jobs

Construction of Motueka's new \$5 million library will begin as planned in September, providing 19 full-time local jobs and a boost to the construction sector and suppliers.

The new library has been planned for several years to replace the ageing and undersized library in Pah Street with a modern, sustainable new building in Decks Reserve.

Mayor Tim King said the Council had committed to a zero rates revenue increase in the next financial year, and was reassessing its projects and operations to identify efficiencies and cost-savings.

"As part of that consideration, which will be ongoing over the next several months, we've taken a close look at the Motueka Library project. This is a project that will provide local construction jobs – as well as long-term benefits to the Motueka community through the services and opportunities the facility will provide."

Regionally-based Coman Construction is the contractor appointed to carry out the build.

Tim said part of the analysis of the library project also looked at the cost to the Council of cancelling the contract.

"The costs of cancelling are potentially significant. Continuing with the project was clearly the best option given both the benefits to the community of the new library, and the likely financial impacts of opting out now."

The Council has also decided to seek external grant funding towards some of the sustainable, cultural and landscaping features of the new library.

Tim said the Council would play a key role in Tasman District's

economic recovery through continued investment in community infrastructure.

"We know we need to take care to manage the impacts of our rates demands on our community while balancing that with continued investment."

Find out more: More information about the Motueka Library project can be found at tasman.govt.nz/motueka-library.



Youth Council writing competition

The Tasman Youth Council is running a writing competition for 13 – 18 year olds in the Tasman region.

Proposed by Tasman Youth Councillor Gulliver MacDonald, who has organised it with the help of fellow Youth Councillors Jacob Evans and Mackenzie Brough, the theme is "Life in Lockdown." Entries should be under 800 words and must be submitted by 13 May. You can

get more details on the Tasman Youth Council Facebook page and entries can be sent to wyc@sporttasman.org.nz.

A prize of \$200 will be awarded to the winner, selected by Mayor Tim King.

Kingsland Forest track closures

Forestry harvesting starts from Monday 18 May in the Kingsland Forest area in Richmond. The harvest consists of 33ha, primarily in the upper slopes, and a smaller area in the lower section of Reservoir Creek.

Recreational tracks around the harvest areas will have to be closed to keep everyone safe. We appreciate this is a very popular area so we've tried to minimise the impact on the public by splitting the closures into phases, so that only tracks affected by the current harvest operations will be closed at any one time.

The harvesting will be done in three phases and will take around four

months to complete in total, with some overlap between phases.

Phase One – shown in green on the map: All walking and biking tracks are closed above the Big Skid, Grassy Saddle and Upper Jimmy Lee Creek. Duration approximately two and a half months.

Phase Two – shown in orange on the map: All walking and biking tracks will be closed above Cell Phone Tower, Grassy Saddle and Valhalla Water Tanks. Duration approximately two months (overlapping with Phase Two and Three).

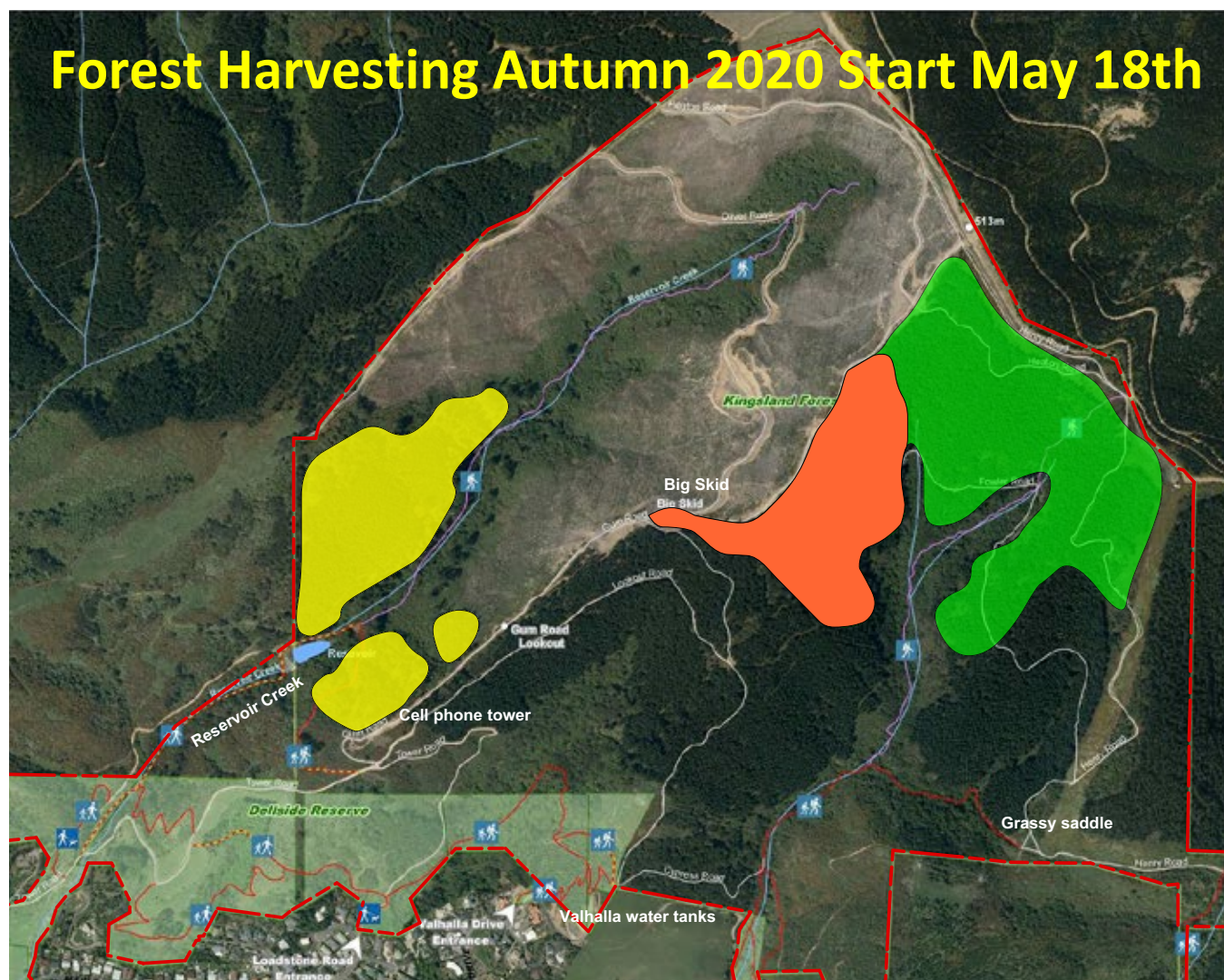
Phase Three – shown in yellow on the map: All walking and biking tracks will be closed in the Reservoir Creek catchment and above Cell Phone Tower. Duration approximately one month.

Visit our website, tasman.govt.nz for more details, including the harvest report.

Please look out for the signage in place and stay out of the closed areas at all times. Thanks for your patience while we carry out this work as quickly and safely as possible.

Kingsland Forest Development Plan update

We received 212 submissions to the draft Plan and 12 people spoke at the Hearing Panel meeting on 16 March. The Hearing Panel was due to consider submissions and make recommendations to Council on any changes to the Draft Plan on 27 March, but that meeting was cancelled due to Level Four restrictions. It will now happen via Zoom on Thursday 14 May.





SUSTAINABLE TASMAN

Outdoor burning – let’s keep the winter air clear

During the winter months smoke from outdoor burning causes many problems as calm, clear days with cold temperatures keep smoke sitting low to the ground under an inversion layer. We need to take extra care to minimise the amount of smoke, odour and ash from outdoor fires as it can cause significant adverse health effects, as well as being a nuisance for neighbours and in the local area.

Outdoor burns are banned year round in Richmond and Motueka townships. Other townships within Tasman and the outskirts of Richmond and Motueka are zoned ‘fire sensitive’ which means there is no outdoor burning between 1 June and 1 September (unless burning diseased horticultural crops).

Where outdoor burning is allowed, it must be carried out using good practices and every effort must be made to minimise smoke:

- Check the weather conditions, wind speed and direction and continue to check throughout the burn.

- Wind speeds of 10–25km/h are ideal (movement of twigs and small branches).
- Burn well-seasoned, dry vegetation only.
- Stack vegetation and untreated wood loosely. Don’t compact the material.
- In winter, only burn between 10.00 am and 4.00 pm and don’t add any more vegetation after 3.00 pm.
- Do not leave a fire to smoulder overnight.
- Get the fire burning hot as quickly as possible and keep it

hot throughout the burn as this produces less smoke.

- Minimise the frequency and number of fires as much as possible.

Check out the updated good practice guide for outdoor burning on our website, tasman.govt.nz, along with the Tasman Resource Management Plan rules for air discharges.

You must also check if you need a fire permit from Nelson Tasman Fire and Emergency NZ, go to checkitsalright.nz.





Community to be consulted about changes to ensure safe drinking water

Currently five of Tasman District Council's 15 water supplies do not have permanent residual disinfection through the use of chlorine; Upper Takaka, Hamama, Motueka, Riwaka/ Kaiteriteri and Richmond. The Council has agreed to consult with the community on a proposal to introduce chlorination permanently to those five supplies to ensure water is safe to drink.

There are two main reasons why the Council has chosen to consult on the proposal at this time. Firstly, providing safe drinking water is at the very core of what Councils do. We have a duty to do so and an obligation to our residents to ensure the water supply is as safe as we can make it. Secondly, there is central government legislation that obliges us, and all Councils, to prove we are meeting that responsibility.

Central Government changes

All Councils around New Zealand are being held to higher standards for drinking water quality. This stems from the enquiry into the Havelock North Contamination Event in 2016. Their water supply became contaminated with campylobacter, resulting in approximately one-third of the town (over 5,000 people) becoming sick, 45 people hospitalised and four deaths.

Having permanent residual disinfection using chlorine, as part of a multi-barrier treatment approach, was one of the recommendations from the Government's inquiry. It is one of six key principles identified in the New Zealand Drinking Water

Safety Plan Framework (2018), which Council has to conform to.

The Director General of Health also indicated in a letter to Councils without chlorination in all water supplies that they will need to demonstrate that the other preventative measures they have in place are effective and can maintain the quality of the drinking water throughout the system, i.e. from source to tap.

Does our water measure up?

Under the current systems in place on some water supplies, it will be difficult for us to meet the standard required. For instance, while Council carries out testing of non-chlorinated supplies, especially those with reservoirs, it can take at least 24 hours to get a sampling result. If contamination is found, given that timeframe, it's likely that some, if not all, of the users on that supply could potentially have been exposed to contaminated water for at least 24 hours.

There have been regular instances (several times a year) when testing has picked up total coliform counts in the Richmond water supply network and occasionally *E.coli* counts. This is a similar situation for the Riwaka/ Kaiteriteri water supply scheme. Total coliforms and *E.coli* have not been detected in samples taken directly after water has been treated with UV in the treatment plants, so we know the contamination is occurring in the network.

Contamination can come from a number of sources: work on the

water supply network, backflow events (water re-entering the supply), illegal connections, pipe breaks, faulty fittings, illegal water takes from hydrants or through damage to reservoir roofs.

The constant presence of these risks alongside our current monitoring and operational measures may well be seen as ineffective under the current national standards. Advice from Government is that our Water Safety Plans will not be approved unless we have residual disinfection or good justification as to why it is not required, which we have been unable to do. Chlorination is the most widely used method throughout the world to treat drinking water.

Next steps

Council staff will prepare an information document on the proposal, which will look at the various treatment options and the relative costs of each approach. This will form the basis of the consultation with the community, scheduled to happen in July 2020.

Mayor Tim King says, "Above all else, we need to settle upon a solution that is as effective as possible and makes long-term financial sense. We understand that there may be a high level of interest in this proposal. We think it's crucial that we put out clear information about what's proposed and the feedback we get will help us to make a well informed decision later in the year."

Apply now for a Community Grant

Do you have an exciting community project in the pipeline? Are you planning an event when we are allowed to get together again? A Community Grant could help to make it happen.

Applications for our Tasman District Council Community Grants are open now and close on 31 July 2020. Funding is available for Tasman-based projects that meet a community need and have community support. Priority is given to projects that can show financial support from other sources as well.

Grants are available for projects that fit into the following categories:

- Community and economic development initiatives

- Arts/culture/heritage/museums
- Festivals and events
- Youth and children
- Social services
- Environment
- Emergency services
- Sports and recreation facilities.

To apply

1. Visit tasman.govt.nz/link/grants to download the Community Grants from Rates application form.



2. Work on the application at your own pace – and save as you go.
3. Send the completed application form back to us using a simple online form.

Get all the details online at tasman.govt.nz/link/grants or email our Community Partnerships Coordinator Lani Evans on lani.evans@tasman.govt.nz if you have any questions.

Celebrating our community heroes

If you know of someone who you think deserves recognition for all their hard work, you can nominate them for an Outstanding Community Service Award.

Tasman District Council wants your help to identify and celebrate the wonderful volunteers throughout our District by making nominations for this annual award.

There are a huge number of volunteers who work tirelessly to make our community a better place to live, says Mayor Tim King.

“Even with all the challenges we’ve faced over the past months due to the effect of COVID-19, the strength of our community spirit has really shone through. The people who are always ready to help when needed, are the ones we want to celebrate.”

Tasman District Council’s Outstanding Community Service Awards recognise the unsung heroes who add so much to our community. The awards are aimed at acknowledging those who have volunteered for 20 years or more.

It’s a way to make sure they are rewarded with the thanks they deserve for their long-term commitment, generosity, dedication and outstanding service.

Nominees must be residents of the Tasman District to qualify.

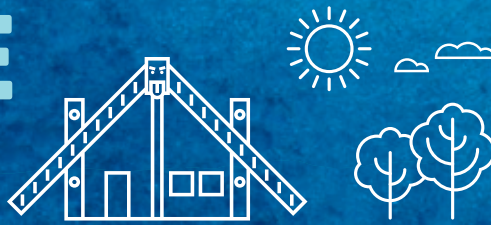
More information and nomination forms are available

on the Council website, tasman.govt.nz, search on “community awards.”

You can email your completed nomination form to gabrielle.drummond@tasman.govt.nz. Nominations must be received by 30 June 2020.



NEWSLINE UPDATES



KEEPING YOU INFORMED ABOUT NEWS AND EVENTS IN THE TASMAN DISTRICT • 8 MAY 2020

Moutere Highway detour – Mission Bridge Replacement

Work to replace Mission Bridge (near Davey Road, Upper Moutere) will begin on Monday 11 May. The project was previously scheduled to begin in March but was delayed due to COVID-19 restrictions. The Moutere Highway will be closed at the bridge and detours will be in place via Gardner Valley Road or Harley Road to the Coastal Highway. For more details, visit tasman.govt.nz, search 'Mission Bridge'.

Streets for people survey

The COVID-19 lockdown has challenged the idea that streets are designed for vehicles. Streets have been transformed into hubs of interaction, recreation, art and play. We have accessed spaces normally reserved for cars, so should we now review how we plan these areas in future? Visit the website tasman.govt.nz, search on "streets for people" and complete a short survey to tell us how the lockdown has changed your perception of streets and how you want them to look in the future. Feedback is invited until 31 May 2020.

Council news direct to your inbox

News and updates about Council projects, services and consultations are now available direct to your email inbox. COVID-19 restrictions have meant we haven't been able to deliver Newsline to homes throughout the District each fortnight. However, you can sign up for a copy to be emailed to you, along with other Council news. Visit the website, tasman.govt.nz, search on "latest Newsline" and follow the link to join the mailing list.

COUNCIL MEETINGS



All meetings are being held via Zoom video conferencing. See the meeting calendar on the website for the access links.

Kingsland Forest Plan – Deliberations

Thursday 14 May, 9.30 am. No public forum

Full Council

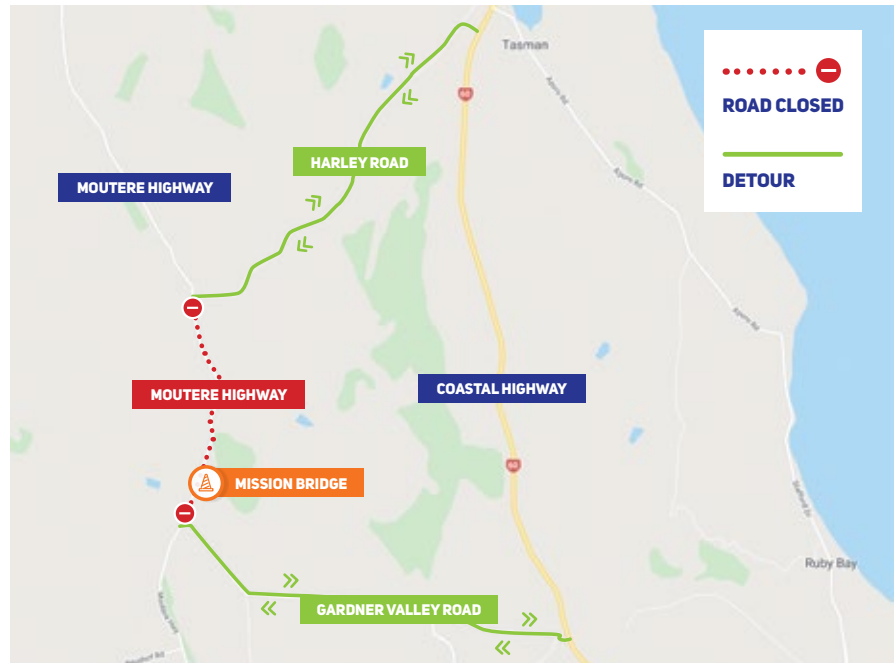
Thursday 21 May, 9.30 am. Public forum

Saxton Field Committee Workshop

Friday 22 May, 9.30 am. No public forum

Commercial Committee

Friday 22 May, 1.30 pm. Public forum



Concerned about your rates bill?

The Council has committed to a 0% rates income increase next year* as one way to try to ease the financial demands on our community. If you need to talk to us about your rates bill please get in touch – we have a range of options that you can take up if you need some extra flexibility.

Find out more:

- Phone (03) 543 8400
- Email rates@tasman.govt.nz
- Visit tasman.govt.nz/rates

**excludes an allowance for population growth. The Council is achieving the overall 0% rates income increase by reducing the proposed general rate. Because our District has a high number of targeted rates determined by where people live and the services they receive, the overall amount individual ratepayers pay will vary.*

Speed Limit Bylaw consultation extended

The public consultation on a proposal to change speed limits on four roads around the District has been extended until 25 May 2020. The proposal is to set lower limits for three roads – Gibbs Valley Road, Hoddy Road and Wharariki Road and to extend an existing 50km/h speed limit on Abel Tasman Drive in Pōhara by 25m. Get all the details and make your submission at tasman.govt.nz/feedback.

2020 vision of the future – Long Term Plan 2021 – 2031

Your direction on what we should be focusing on over the next ten years is really important to us. What projects or activities do you want completed in this Long Term Plan? Check out the pre-engagement document, *2020 Vision for Tasman – Whakakitenga Ruamano Rua Tekau* on the website tasman.govt.nz/feedback. But please be aware that the pre-engagement document was created prior to COVID-19 reaching New Zealand. In light of the potentially huge, but still not fully known, impact of the virus and our response to it, Council has extended the consultation period out to 12 June 2020. For anyone who has already provided feedback, thank you – your views will still be included. If you feel you want to give more or different feedback in light of recent events, you are welcome to do so.

Do your trees hang low?

Now is a good time to check that the vegetation on your property hasn't become a nuisance. If you have a hedge, shrubs or trees that grow alongside a footpath it's up to you to make sure they don't make it hard for people to get past – including those with prams or mobility scooters. So please take a walk around your property and check if any trees, shrubs or bushes need a haircut.