

NEWSLINE

PĀNUI

15 APRIL 2022
ISSUE 519



Change drives our Annual Plan consultation

Substantial changes in the wider legislative, social and economic environment in which we operate are highlighted in our Annual Plan 2022/2023 that we are now seeking feedback on.

Last July we adopted our 10-Year Plan 2021 – 2031 which is a key planning tool for our activities and community outcomes. However, the landscape has changed dramatically since it was adopted.

There are two options on the table. Delivering the programme in our 10-Year Plan plus the additional costs for the 2022/2023 year will result in an increase of 7.7% in overall rates revenue. By deferring some work and making savings we can reduce that to a 5.51% increase. Both options are up from the planned increase of 4.17% in the 10-Year Plan.

Mayor Tim King says when developing our plans for the next financial

year, we were keenly aware of the pressures everyone is currently facing.

He says the situation is far from ideal and some tough decisions have had to be made. Like businesses and households, the Council is experiencing pressures from external economic factors including high fuel costs, inflation, higher interest rates, supply chain issues and skills shortages.

“Implementing the government reforms, higher insurance and staff costs, and the Waimea Community Dam cost overruns are impacting on our costs.”

Mayor King says despite these challenges we still need to manage and deliver essential services while dealing with the demands of growth Tasman is experiencing.

When comparing rate increases nationally, people should bear

in mind that we are a unitary authority, a combination of a District Council with the environmental responsibilities of a Regional Council. Essentially, we are two Councils in one, and one of only five nationally.

There are many ways to engage with us. You can attend an online public feedback meeting, complete a submission form, or record a video or audio submission online.

The online forums will be:

- Wednesday 20 April, 10.00 am – 11.30 am
- Tuesday 26 April, 6.00 pm – 7.30 pm
- Tuesday 3 May, 6.00 pm – 7.30 pm

Public hearings are scheduled for Wednesday 18 May. Submissions close Wednesday 4 May.

All information is available at tasman.govt.nz/annual-plan.

MEET YOUR REPRESENTATIVES

Abbie Langford – Golden Bay Community Board

Now that Covid is really here in Tasman, I am so proud of the way our communities are working together to support each other. People are checking in on others, delivering meals, groceries and medical supplies. People are being kind and understanding, which is the way that we will get through.

It will be a while before our communities are back to a semblance of normality, or a new normal. Actually, it has been a long time since things were normal, but our community has been wonderful at adapting and managing all the challenges that Covid has brought.

We need to continue to be kind and understanding – with each other and with all the awesome staff showing up for work, who are often working extra hours to cover for sick workmates.

Seven days in isolation definitely has its challenges, regardless of whether you're isolating as a family with children, a couple, flatmates or just on your own. It's important to get as much rest as possible and to keep well hydrated.

Staying in touch with family and friends is great. It helps people feel connected and gives you a chance to talk through any challenges that you might be facing in isolation.

It is an uncertain time, with changes to rules and regulations happening often. There is lots of good information on the Ministry of Health Unite Against Covid-19 website or check in with your local medical centre.

If you need extra support, or someone you know does, reach out. There are lots of people ready to help.



Fatbergs strike again

Recently the wastewater network that services the Stephens Bay neighbourhood near Kaiteriteri was blocked by a large build-up of fat residue.

These fat blockages, also known as "fatbergs," are the result of a mixture of different materials combining to create a single mass and are becoming reasonably common across Tasman.

The most recent fat blockage resulted in an overflow of raw sewage from a manhole into the adjacent Stephens Bay wetland which in turn flowed into the bay. This created a human health risk and polluted the environment.

We have been monitoring the wetland discharge and beach for bacterial contamination and fortunately the situation has improved.

Accumulations of fat and other products also block our pumps which have to regularly be pulled apart for cleaning. This can be an expensive and time-consuming job.

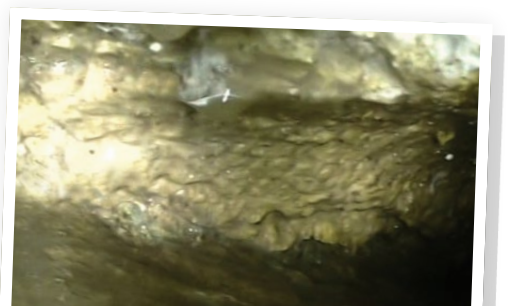
To prevent future blockages and overflows, please ensure that fats, cooking oils, sanitary products, condoms, wet wipes and clothing are not put down your drains. These items need to be disposed of in a rubbish bin.

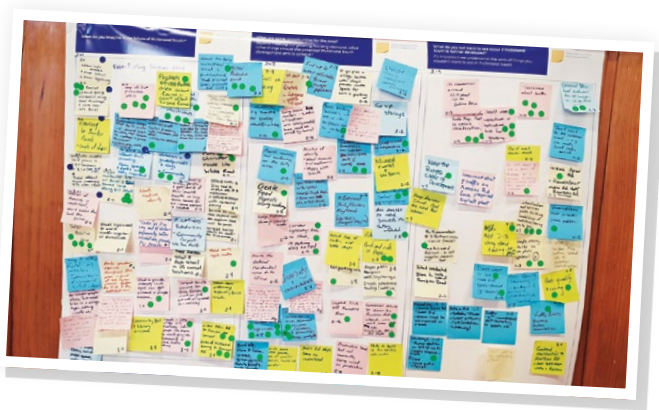
Our contractors will use closed circuit TV cameras to inspect the parts of the Stephens Bay wastewater pipeline to check if there is any other material that needs to

be removed from the network to avoid any future sewage overflows.

Please remember that when you pour cooking grease down the drain, it cools and congeals in the sewer pipes and blocks them.

Preventing the issue in the first place is the best approach and you can help. Always remember to flush only the three P's – pee, poo and paper (toilet paper).





Have your say on the future of Richmond South and Hope

We want to hear from landowners, neighbouring communities and potential future residents of Richmond South about their vision for the area before 26 April.

Our Environmental Policy Manager Barry Johnson is encouraging people to be part of the process to reimagine Richmond South as a place where more people can live, work and spend time.

“In October last year, we launched the Reimagining Richmond South project to create a structure plan for the area south of Richmond towards Hope. We had a productive first round of community engagement and are seeking further creative ideas and feedback on early concepts to help shape the community vision.”

So far this month, we've hosted online community visioning sessions and workshops about key topics and introduced four early concepts for Richmond South growth. We also have a recorded webinar available to watch on our website.

There is still time to give us feedback using the form on our Reimagining Richmond South website. On the 'Have Your Say' visioning page, you can read what others have suggested and add your own ideas.

The community vision will be used by the team to create the preferred structure plan option that we will consult on a few months from now.

“This is an opportunity to carefully plan the Richmond South area and provide much needed housing. The final structure plan will be considered by councillors and if the Council agrees, it will go through a formal plan change process,” said Barry.

Share your ideas at environmentplan.tasman.govt.nz/have-your-say or phone us on 03 543 8400 to request a call from a planner.

Shared cycleway ready for use in Richmond

A new link for cyclists, pedestrians and other mobility device users between the Berryfield subdivision and Richmond has been completed and is already proving popular.

An 11-metre long and three-metre wide bridge, which provides a link between Oakdale Grove and the Railway Reserve, was lifted into place by crane last month. The steel and timber structure was built off-site by a local engineering company and then moved into place over Poutama Stream.

The bridge is part of the Richmond West Transport Connections project to link the residential area in the west to central Richmond by offroad paths, improving transport options and reducing car dependency.

Bridge users we spoke to were all extremely impressed with the structure and are pleased that it has shortened their trip into central Richmond.

There's still a little finishing work to be done on the three-metre wide paths with concrete to be poured on the remaining 500 metre stretch of gravel, but they can still be used before that happens.

The entire project is expected to be finished by June.

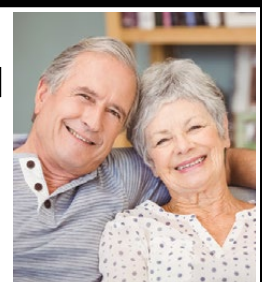


Thinking ahead for peace of mind

There is no age limit. No matter what your age, the best time to plan is now. Pre-planning and pre-payment leaves nothing to chance and gives you and your family one less thing to worry about. We are here to help answer your questions

Phone us today for a **FREE INFORMATION PACK**

Proud members of New Zealand Independent Funeral Homes



WR
WaimeaRichmond
FUNERAL SERVICES

03 544 4400 • 24 Champion Road, Richmond • wrfs.co.nz

Have you seen a moth plant near you?

Moth plant, also known as *Araujia hortorum*, milk vine, wild choko vine or false choko, has now been discovered in Tasman.

It's an evergreen climbing vine, with distinctive, smelly, milky sap that can irritate the skin. Narrow leaves grow opposite each other on the vine and are dark green above and dull grey below. Flowers are small (20–25mm), white and appear from December to May.

Their fruit is visible now and is very distinctive. They resemble chokos, with large, leathery green pods (10 x 7cm) shaped like an upside-down pear. Each pod contains



hundreds of black seeds with white fluffy 'parachutes', like a thistle.

They grow quickly to the canopy where they smother plants and create a long-lived, heavy mass that can produce many seed pods each season. When the pods mature, the seeds are dispersed on wind currents far and wide, making it difficult to contain once it's established.

This vine is tolerant of shade, drought, wind, dampness and damage.

It has caused havoc in the North Island, particularly in Northland. It has only been found at a handful of sites in Tasman, and we need your help to keep it that way.

It was recently found at four locations on Hill Street, between William Street and Champion Road. Fifty large seed pods were removed from these sites. This is very concerning as we don't currently know the source of the plants, and the proximity to the Richmond Hills means seeds could very easily have been distributed there. It has also been found on Main Road Hope, between White Road and Bateup Road.

If you think you have a moth plant on your property or have seen it in the District, please notify our Biosecurity Team on 03 543 8400.

Air quality monitoring results are in

We have a monitoring programme to better understand air quality issues in the Motueka, Riwaka and Brooklyn areas.

This programme spans several years and involves temporary monitoring of the larger PM₁₀ and smaller PM_{2.5} pollution particles over late autumn and winter.

We need to understand if there are air quality problems associated with home heating and/or outdoor rural burning, which may require permanent monitoring and the introduction of management tools.

Last winter we installed a network of air quality monitoring sensors across six locations monitoring PM_{2.5}. The data shows Riwaka and Brooklyn complied with the 2021 World Health Organisation's (WHO) guidelines.

Over the monitoring period, the

primary source of emissions in the Riwaka and Brooklyn area was home heating.

However, some caution needs to be exercised with this conclusion as it appears last winter wasn't a 'normal' year for rural outdoor burning, and concentrations of PM_{2.5} may usually be much higher. We'll continue to monitor this again over winter.

Data collected for Motueka shows the township may have an air quality problem because sensors measured PM_{2.5} concentrations above the WHO guidelines on 18 days.

However, our monitoring of PM₁₀ at Ledger Goodman Park did not exceed the current standard under the National Environmental Standards for Air Quality.

These standards are currently under review by the Ministry for the



Environment and our surveillance programme will prepare us to transition to the anticipated future regulations under PM_{2.5}.

Earlier this year we started daily monitoring of PM_{2.5} in Motueka to gain a continuous one-year collection of data.

We are also extending our monitoring to other townships, with a focus on Brightwater and Wakefield this winter.

You can read the report on our website, tasman.govt.nz, search 'air quality study'.

A splash of help available for water leaks

Do you have a high water account? If so, you may have a leak somewhere on your property and we may be able to assist with our Water Rates Remission Policy.

Water rates remissions apply to residential and now non-residential customers who discover leaks anywhere on their property. Non-residential customers must show a record of water meter readings and calculated monthly water consumption to qualify.

This application needs to be submitted within six weeks from the date of your current invoice and actioned on the first high water account. Don't wait for a further high account to apply.

All water leak repairs must be carried out by a registered plumber or certified by a registered plumber if the repair is done by the property landowner (the only exemption being Murchison).

To avoid high water accounts, we ask you to look at your water meter regularly, for example, when you put your recycling out.

Remember, leaks are not always visible on the surface. We have helpful tips on how to find water leaks on our website.

To apply for a water remission please fill out the Water Rates Remission application form available on our website.

For more information visit tasman.govt.nz/water-meters or phone us on 03 543 8400.

Cyclists can now pass over the Baton

The new Baton River cycle bridge on Tasman's Great Taste Trail in Motueka Valley has been completed and can now be used by cyclists.

The bridge is the first step in completing the route from Tapawera to Woodstock via the Baton Valley.

Thanks to the generous support of neighbouring landowners, this joint project between the Council and Nelson Tasman Cycle Trail Trust means crossing the Baton River is now much easier and safer for riders.

Although the new bridge is fully open for use, there are still finishing touches being completed by the Trust, including toilet facilities,

a purpose-built rest area and wayfinding signage.

While most of this route is proposed as a grade three cycling route along quiet and scenic country roads, the Trust is also working on a number of improvement opportunities along the Tapawera-Baton Road.

Once all the improvements are complete, the trail will be audited by an independent Master Trail Builder before being officially added to Tasman's Great Taste Trail.



This link to the Motueka River West Bank Road will complete the loop originally envisioned by the Nelson Tasman Cycle Trails Trust back in 2009. This was made possible by funding from Tasman District Council, a government National Cycleways initiative and additional generous support from several local businesses and organisations.

Draft Schedule of Fees and Charges 2022/2023 out for feedback

The Council can set a Schedule of Fees and Charges to recover some of the costs associated with our services in line with our Revenue and Financing Policy. Some of these charges are set by statute, and others by the Council. All charges are reviewed each year to determine whether they need to change or not, and are included in a Schedule of Fees and Charges.

The Council approved the Draft Schedule of Fees and Charges 2022/2023 for public consultation on 31 March. The Draft Schedule covers the year from 1 July 2022 to 30 June 2023.

We are seeking your feedback on the Draft Schedule until 5.00 pm Wednesday 4 May.

The full Statement of Proposal is available on our website and at all our service centres and libraries. Submissions can be made on our website or delivered to your local service centre or library.

For more information and to have your say visit tasman.govt.nz/feedback.

ANZAC Day services and parades 2022

Lest we forget: services and parades will be held around the District on Monday 25 April.

Brightwater: No service, but the community and Richmond RSA will lay wreaths.

Collingwood: Dawn Service, 6.30 am at the Cenotaph.

Lake Rotoiti: Service, 10.30 am at the Lake Rotoiti Community Hall, 22 Main Road St Arnaud.

Māpua: Parade, 10.45 am, from next to the tennis courts. Service, 11.00 am at Māpua RSA Memorial Library.

Motueka: Parade, 6.25 am from the Motueka Bowling Club Carpark, Pah Street, Motueka. Service, 6.30 am at Motueka War Memorial, Pah Street.

Murchison: Service, 11.00 am at the Memorial in Waller Street (Murchison Sport, Recreation and Cultural Centre if wet).

Ngātimoti: Laying of Wreath and Service, 10.30 am at St James Church, Waiwhero Road.

Richmond: Parade, 10.45 am from Sundial Square. Service, 11.00 am at War Memorial Gardens, Cambridge Street.

Riwaka: Service, 9.00 am at the Memorial Gates, the intersection of School Road and SH60.

Tākaka: Dawn Service, 6.00 am at the Tākaka Memorial Reserve, Commercial Street.

Tapawera: No service, but the community is welcome to lay wreaths.

Tasman: Service, 10.00 am at the Memorial.

Upper Moutere: Service, 10.00 am at the Memorial.

Wakefield: Service, 10.00 am at the Wakefield Hall.



G.J. Gardner. **HOMES**

VISIT OUR NEW SHOWHOMES

86 & 88 Berryfield Drive, Richmond

CONTACT 03 543 9502 | 0800 42 45 46
NELSON OFFICE 195 Queen Street, Richmond
OPEN Monday to Friday, 8.00am – 5.00pm
www.gjgardner.co.nz

Proud to be sponsoring:



THINK PLAN **DO**

Engineers / Surveyors / Planners

Land Surveying / Resource Management
Environmental Science / Geotechnical Engineering
Civil and Structural Engineering

0800 999 333
nelson@do.nz
www.do.nz

Level 1, 42 Oxford Street
Richmond 7020

do DAVIS OGILVIE
ENGINEERS / SURVEYORS / PLANNERS



NEWSLINE UPDATES



KEEPING YOU INFORMED ABOUT NEWS AND EVENTS IN THE TASMAN DISTRICT • 15 APRIL 2022

Covid restrictions in Tasman

Get the latest information about Council services and facilities under the Covid-19 Protection Framework (traffic light system) on our website, tasman.govt.nz.

Council hours and services on ANZAC Day

Service centres and libraries

All service centres and libraries will be closed for the public holiday on Monday 25 April. Usual opening hours apply otherwise. We are always here to help when needed though, call 03 543 8400 for assistance, 24 hours a day, seven days a week.

Rubbish and recycling

There are no changes to the rubbish and recycling collections on ANZAC Day. All our Resource Recovery Centres will be open as normal.

Richmond bus service

The Richmond Loop service does not operate on public holidays. For updates on other services visit nbus.co.nz.

Rural sports funding – apply now!

The Sport NZ Rural Travel Fund offers help with travel costs for rural sports clubs and rural school teams. The fund helps young people aged 5 – 19 participate in local sports competitions.

Get in quick as the next funding round closes on 30 April 2022. Head to tasman.govt.nz/grants for more information.

24 HOUR ASSISTANCE:
PHONE 03 543 8400



KEEP UP TO DATE:
TASMAN.GOV.TZ

Covid-19 grants for Tasman community groups

If you are a local community group that has been financially impacted by Covid-19, then this grant could be for you. The purpose of the Covid-19 Grants is to:

- Support community organisations that have incurred costs or suffered losses as a result of Covid-19.
- Support community organisations that assist vulnerable people and who have needed to increase their service as a result of Covid-19.

There is \$100,000 available in the Covid-19 Grants Fund, with a typical allocation being about \$5,000 depending on the losses/extra costs incurred.

Applications for this round of funding close on Sunday 1 May 2022.

Full details about criteria and eligibility can be found at tasman.govt.nz/grants.

COUNCIL HUI



Under Covid-19 restrictions, meetings will take place via Zoom video conferencing. Public forum presenters are required to present via Zoom. Visit tasman.govt.nz/meetings-calendar for the Zoom link.

Motueka Community Board

Tuesday 19 April, 4.00 pm

Submissions Hearing (Draft Wastewater Bylaw deliberations)

Wednesday 20 April, 9.30 am

Submissions Hearing (Draft Walking and Cycling Strategy hearing)

Thursday 21 April, 9.30 am

Submissions Hearing (Draft Walking and Cycling Strategy deliberations)

Tuesday 26 April, 9.30 am

Submissions Hearing

Wednesday 27 April, 9.30 am

APPROVED TEMPORARY ROAD CLOSURES



Applicant: Motueka RSA

Event: ANZAC Day parade

Location: Pah Street, Motueka – from number 45 to number 7 Pah Street.

Date and time: Monday 25 April 2022, 6.00 am – 7.30 am

Applicant: Motueka RSA

Event: ANZAC Day event

Location: School Road, Riwaka – from the intersection School Road.

Date and time: Monday 25 April 2022, 8.45 am – 9.30 am

Applicant: Nelson RSA

Event: ANZAC Day parade

Location: Aranui Road, Māpua – from Higgs Road to the tennis courts.

Date and time: Monday 25 April 2022, 10.00 am – 12.00 pm

Applicant: Richmond/Waimea RSA

Event: ANZAC Day parade

Location: Queen Street – from Sundial Square to Cambridge Street. Cambridge Street – from Oxford Street to Queen Street. Oxford Street – from Wensley Road to Gladstone Road (SH6).

As Queen Street will be closed the bus will have a temporary bus stop set up on Talbot Street outside PAK'nSAVE as per previous years.

Date and time: Monday 25 April 2022, 10.00 am – 12.30 pm

Applicant: Richmond/Waimea RSA

Event: ANZAC Day event

Location: Whitby Way, Wakefield – from Edward Street to Wakefield car park entrance.

Date and time: Monday 25 April 2022, 9.00 am – 12.00 pm

WHAT'S ON IN TASMAN



Create an Easter peg egg

This Easter, pick up your free Take & Make kit between 14 – 23 April from Murchison, Motueka, Richmond or Tākaka Library and find fun Easter activities and everything you need to make a hatching egg! We'll also be holding Easter storytime for the wee ones at Tākaka Library on Wednesday 20 April. Phone 03 525 0059 for more information.

How to look at art

Wednesday 27 April, 5.30 pm, Richmond Library.

Our popular sessions for art lovers are back! Sarah McClintock, The Suter Art Gallery's curator and collections manager will bring a mystery item from The Suter's permanent art collection and gently guide you through the process of unpacking the who, what, when, where and why of the piece. Free. All welcome.

The law and you

Trust laws: Tuesday 19 April and Powers of Attorney: Tuesday 26 April. Both 10.00 am – 11.00 am, Richmond Library.

Who will make decisions on your behalf when you're no longer able to? Kaye Lawrence of Nelson Bays Community Law Service will be providing free legal information about Enduring Powers of Attorney and recent changes to Trust laws. Free.

BizBreak April

Wednesday 27 April, 10.00 am – 11.00 am, Zoom.

BizBreak offers a chance for local business owners to connect and network in a relaxed and down to earth setting. Meet other entrepreneurs, build your networks and learn more about the Nelson Tasman business community. This event will be held on Zoom so please register to get the link. Visit ntbt.co.nz for more information. This event is run by the Nelson Tasman Business Trust.

Wellby Talking Cafés making connections

Wellby Talking Cafés welcome everyone for a relaxed cuppa and connection.

They're aimed at starting peoples' journeys to connect with others who enjoy similar things or to assist in helping people find services they need.

Using the Found Directory, hosts talk about what's going on in the community and what resources are available to create connections with others.

You can pop in for a quick chat and a cuppa or stay for a longer conversation with friendly people. Learn about the vast array of organisations, groups and support services available in your area. There's no need to register, just turn up on the day. Absolutely everyone is welcome. Tea and coffee are provided at most sessions.

Talking Cafés are held in numerous locations, right across the Nelson Tasman region. They are an opportunity to talk face-to-face with people and find out what they are looking for and a great opportunity to meet new people.

Wellby Talking Cafés are held at Richmond Library on the second Tuesday of every month from 1.30 pm until 3.00 pm. It's free and everyone is welcome.

Pictured above are some of the Nelson Tasman Wellby team.



Grease Traps & Regular Services ...

Regular Services removes the hassle of having to arrange each clearance. Let us manage your grease trap compliance with scheduled visits to your premises.

Commercial & Residential

Providing Liquid Waste Management Solutions to all - Homeowners, Local Authorities, Government Agencies and Businesses.



Give us a Freecall
0800 725 326

Visit our Website
nmwaste.co.nz

Bookings or Enquiries
bookings@nmwaste.co.nz