



Pet cat bylaw passes

Your family's favourite feline is now covered by new rules adopted by elected members at a meeting late last month.

The bylaw aims to ensure that domestic cats are well-cared for, can be easily reunited with family if they get lost, and their population is managed humanely and effectively.

We received 154 submissions during the consultation on our Cat Management Bylaw, covering a wide range of issues. The proposed Bylaw was widely supported in the submissions, with 89% supporting microchipping, 86% agreeing with registration, and 88% backing desexing.

All submissions were carefully considered, and some of the feedback directly influenced the final bylaw and future review considerations.

All domestic cats over the age of six months need to be microchipped, registered with the New Zealand Companion Animal Register (NZCAR), and de-sexed.

Exemptions to de-sexing are enabled where a cat is registered with a nationally recognised breeders body, or if a vet considered the procedure would adversely affect the health or welfare of the cat.

The bylaw comes into effect from 1 January 2025. However, if you already have a cat, you have until June 2026 to comply with the bylaw.

If your cat is already microchipped, registered with NZCAR, and de-sexed, you do not need to do anything further.

When the bylaw is reviewed in five years, other issues such as pet cat containment/curfews, limits to cat numbers per household, and feeding colony cats, will be considered.

You can see the new bylaw at shape.tasman.govt.nz/cat-bylaw or at our service centres and libraries.

FUTURE FOCUS



Public places provisions passed

A bylaw aimed at keeping our public spaces safe and enjoyable for all residents was adopted late last month.

Our Public Places Bylaw is designed to enhance public health and safety, minimise nuisances, and regulate trading activities. For some areas, we wanted to streamline processes by moving away from permits and licenses, instead setting out conditions for activities.

We received 35 submissions, some of which influenced changes to the final bylaw. These points summarise the provisions of the bylaw:

- Trading in parks and reserves is generally prohibited, with written exemptions possible for special events.
- Mobile trading is permitted, if requirements are met. There is no longer a need for a licence or permit.
- Commercial services occupying public space permanently or semi-permanently must enter a formal agreement, with appropriate charges for use of the land.



- Street fundraising is permitted, if requirements are met. Prior written permission is no longer required.
- Busking is permitted, if requirements are met. A permit is no longer required.
- Businesses may only have one sandwich board. It must be put on the roadside edge of the footpath, with 1.8 metres of clear footpath. Maximum size is 600mm wide and deep, 900mm high. Larger advertising signs or flags on public land are not permitted.
- Businesses occupying public space for outdoor dining must obtain a licence. We may offer 20% discount on this if the business keeps the area smoke and vape-free.
- Outdoor furniture must not create a hazard for pedestrians and must allow a 1.8-metre-wide clear pathway.

You can see a copy at our service centres and libraries, or at shape.tasman.govt.nz/public-places-bylaw. It comes into effect on 1 February 2025.

Photo © Chocolate Dog Ltd.

Our projects still benefiting from Better off Funding

It's been two years since we received our Better Off Funding allocation from Central Government.

We've made good use of the initial tranche one allocation and in 2024 we have continued to make inroads investing in community facilities, recreation activities, and active and public transport projects.

The \$5.64 million provided by the Department of Internal Affairs has helped implement 28 projects and initiatives around Tasman to benefit the wider community.

Of the more visible outcomes to reach completion – Murchison now has a destination pump track since the Four Rivers Flow Zone officially opened in April.

The Motupipi Street footpath extension, landscaping at Te Noninga Kumu/ Motueka Library and improvements to facilities at Moturoa/Rabbit Island have added to the way communities enjoy their outdoor time.



Just as important but in more of a background capacity, the funding has also enabled business case, design, and feasibility aspects to be completed for community centres at Tapawera and Waimea South, and a Whai Oranga Wellbeing Centre for the region.

Where we have had money left over on projects, this has been transferred towards supporting water infrastructure projects, including Water Services Act delivery requirements for the Motueka water supply and Dovedale Water Treatment Plant.

Testament to the longer-term value of the funding – we still have a number of projects on the boil – including our iwi capability building programme and improvements to Kingsland Forest Park.

We will keep you up to date as they progress through 2025.



Events have moved!

You can now find all events for Nelson Tasman on the official regional website.
nelsontasman.nz/events



Mahi to keep Mohua community safe around the moana



Port Tarkohe Plan floated for feedback

The Port Tarkohe draft Spatial Plan addresses how the interests of commercial, recreation users, and special/environmental values will be managed and served in the future.

Releasing the Port Tarkohe draft Spatial Plan for public feedback marks the next stage for this project.

Previous community engagement has created wide interest and feedback from the public, landowners, iwi, recreation, industry and environmental advocates who have an ongoing interest in the creation of a balanced, sustainable, and thriving Port Tarkohe.

We're asking you about the three objectives of the draft Spatial Plan and the actions that will support their implementation.

The three objectives focus on improving certainty around use, providing for appropriate growth and change, and protecting the special spaces, places, and environmental values.

Actions supporting the objectives include separating uses, drafting new rules, ensuring safe access, management plans for storm and wastewater, supporting cultural and environmental values, and community-based biodiversity restoration and enhancement, among others.

You can see the plan and share your feedback at shape.tasman.govt.nz/port-tarkohe-spatial-plan until Monday 10 February 2025.



Under a partnership programme between Tasman Harbourmaster and Manawhenua ki Mohua, we will have a number of ambassadors – Kiwi Educators – on hand at boat ramps and launching sites this summer across Mohua / Golden Bay.

This initiative is a new programme, funded by Maritime NZ, to increase safety awareness in remote areas of Tasman District.

The Kiwi Educators will be speaking to boaties and water users at launch sites about boat safety, carrying out a short survey, and handing out flyers to underline key boat safety messages.

Education and awareness are the key outcomes we're hoping to achieve, offering a familiar face at boat launch sites between Tata Beach and Whanganui Inlet.

The educator presence will also offer enhanced support of Harbourmaster operations in this part of the District.

You can expect to see the Kiwi Educators, accompanied by a smile and wave (mana or standard), between Boxing Day and the end of January.

This is intended as a positive, friendly activity, so no compliance action or inspections will be involved in your interactions with the team.

Keep an eye on swimming spots

In Tasman, we're lucky to have so many places where we can go swimming and enjoy water sports. Overall, our rivers and beaches are great for swimming.

All summer long, our environmental officers will be out and about monitoring the water quality at popular swim spots across the District.

We monitor a range of sites, so unless there are warnings out, we can be reasonably assured of good water quality.

Check out the latest information at tasman.govt.nz/swimming-water.



Water Supply Bylaw flows

Our Public Water Supply Bylaw, which was the subject of public consultation earlier this year, was adopted at a Council meeting on 28 November.

This focuses on how we manage and provide public water supply services, protect the water supply network, ensure public health and safety, and provide clear guidelines on water usage restrictions.

Eight submissions were received during the consultation period and some directly influenced the final bylaw, including new definitions and clarification that water restrictions

would not be put in place without cause such as drought, emergencies or operational necessity.

Full details of the bylaw are available at our service centres and libraries, or at shape.tasman.govt.nz/public-water-supply-bylaw-review.



STAFF SPOTLIGHT



A&P Show a tremendous success for Tasman road and water safety

Getting home to families and loved ones was the focus at this year's Richmond A&P Show road safety display – lots of messaging around wearing a seatbelt, having a Plan B to get home if you're thinking about drinking, and conversations about what we can all do to be safer on our roads.

With lots of interactive activities this year, the ever-popular seatbelt crash simulator, impairment goggles, kids' activity books, and various giveaways, there was something for everyone.

Our Road Safety Coordinator, Jeni Thornborough said she was again overwhelmed with the level of interest.

"We are extremely fortunate to work closely with Police, FENZ, IAG, Decepta Car (as seen on TV) and other agencies alongside us to promote road safety."

Whether you're heading away or working through this summer – stay alert on our roads, leave in plenty of time, take regular breaks,

and remember road safety really is EVERYONE'S responsibility.

Check out the photos from the event on the Top of the South Road Safety Facebook page: facebook.com/totsroadsafety.

Our Harbourmaster team was also on hand proudly showing off our new second vessel *Pūkāea* which was built locally by DNA Boats.

Around 90 people also filled out our safer boating survey which will be used to paint a national picture of the needs of recreational water users – the survey will continue throughout summer.



Algae awareness floats to the top

We want to provide the best information and advice about water quality and safety to keep the public aware of the state of our rivers. This requires regular testing, monitoring and updates.

The Wai-iti River is subject to algae/cyanobacteria growth every summer and the extent varies depending on the rainfall volumes and timings.

This brings a reminder of the risk of algae to dogs and potentially those playing in the river if they are not careful to avoid it.

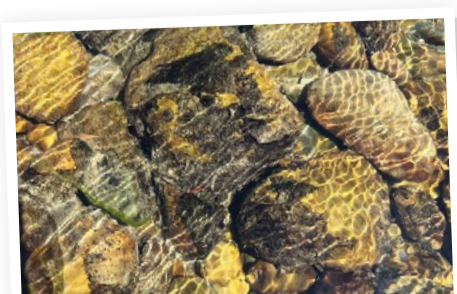
We have started our sampling of the Wai-iti River and will continue the sampling weekly. We found the coverage of toxic algae to be 7.5% at Waimea West Road on 2 December.

While this is still a relatively low risk, people should be exercising caution and avoiding letting their dogs loose. The mats of algae were also starting to detach and build up along the river's edge. This is when toxin production is more likely.

With the first season of a fully operational Waimea Community Dam, there will be some aspects to consider in learning to manage the dam's impact on the river – this includes changes to river flow with impounded water likely to differ from a natural flow.

Together with any water releases from the dam, there will also be occasional flushing flows downstream from the dam. It's important to let everyone know that while these releases will help maintain the health of the Waimea River, any rise in river level will be minimal and will not pose a safety risk for those using the river.

While we expect some coloured water at times, we will nonetheless have a secure river flow to enjoy.





Community champions celebrated

Volunteers are part of the backbone of our community. Often unseen and unheralded, their work flies under the radar yet keeps Tasman the place we love.

Every year we get to celebrate these unsung heroes and their achievements.

The 2024 Outstanding Community Service Awards celebrate the actions of these wonderful people and were presented to four deserving recipients by Deputy Mayor Stuart Bryant earlier this month.

Brian Cargill's roots run deep within the Richmond Volunteer Fire Brigade. Over the past 40 years, there hasn't been one single facet of the brigade's activities Brian hasn't been involved with.

For more than 20 years, David Burt has given his time and focus on projects in reserves and public spaces across Tasman. From helping to build many structures to helping with community plantings, David's dedication has been recognised.

In Golden Bay, Sharon McConnon's name is linked to so many community groups that we can't list them all here, needless to say, she's a highly worthy recipient of an Outstanding Community Service Award.

... And over the past 52 years, Derek Woodcock, or Woody as he's known to the Motueka Community, has dedicated his life to the firefighting and emergency work in and around the town. Woody holds the brigade's record for turning out to the highest number of emergencies.

Over the next few months in Newsline, we will profile each of these deserving people and highlight just how each one of them contributes to making Tasman a great place to live.



Come celebrate Christmas in the Park

Join us for a magical Christmas in the Park on Saturday 14 December at Washbourn Gardens!

Sing your favourite carols together with the choir, enjoy live performances, try the local food carts and share a picnic with your whānau.

Santa will be making a special appearance to spread holiday magic too!

The evening starts at 6.00 pm with a Mystery Quest for children.

It'll be a thrilling hunt around the park. You'll decode clues and uncover the mystery of the missing picnic – fun designed for adventurers of all ages.

There'll be added entertainment with live music from the band We Three, then at 8.00 pm Take the Chance Singers with Nelson Brass Band will take the stage for a night of carols and Christmas songs.

A note to remember is this year we're not providing candles so bring your own LED candles to light the Christmas spirit.

If it's wet, Christmas in the Park will be on Sunday 15 December.



Learn more about Tasman's natural hazards

We are making some changes to the natural hazards pages on our website with the aim of making things easier for people to understand. We want everyone to be more aware and better understand Tasman's natural hazards so that you can be prepared if or when they occur.

You'll find descriptions and information on the District's natural hazards: geological, coastal, flooding, wildfire, and severe weather. We encourage you to visit the updated web pages to learn about the natural hazards in your area.

In the New Year, the web pages will also feature an online, easy-to-use, natural hazards map viewer. This will display the location and extent of natural hazards that can occur across the

District where technical information or modelling is available.

While we cannot advise landowners about the implications of mapped information on their insurance premiums, we recommend landowners contact their insurance provider if they have any concerns.

You can find out more at tasman.govt.nz/natural-hazards.



Motueka stopbanks project all go again

We're about to get started on our next phase of work on the Lower Motueka River stopbank network, to build resilience and reduce the community's risk of flooding from the river.

Following the successful completion of Stage One earlier this year, funding for the Motueka Stopbanks Refurbishment Project Stage Two was approved by Kānoa Regional Economic Development & Investment Unit, as part of the Government's Resilient Infrastructure Fund.

We received a grant of \$7.5 million from Kānoa, of which \$6.6 million will go towards work on the Lower Motueka River stopbank refurbishment, and \$900,000 going towards stopbank repairs at Peach Island. We are providing another \$5 million in co-funding for a total project budget of \$12.5 million.

The Lower Motueka River and Brooklyn Stream stopbanks are to have a 6.7km upgrade, building on the 4.8km initial

stage of work. The stopbank refurbishment on the Lower Motueka River would protect approximately 1,500 hectares of fertile and productive land, along with portions of the town itself.

So far, we have carried out some initial sonic borehole drilling to recover soil core samples, which helps us better understand the ground conditions for the work ahead. We are now planning to begin construction on the first work package in January 2025.

For more information, visit tasman.govt.nz/motueka-projects.



YOUTH YARNS



Youth Council rapt with bin wraps

"Take back Thorp Bush" was a youth-led initiative of the Motueka Youth Council, which started about 10 years ago. The project aimed to minimise antisocial behaviour and make the park safer for everyone.

Since then, young people have organised community events in the Bush and initiated various upgrades.

In 2016, they worked with us on the upgrade of the entrance area, followed by a project to repaint the playground equipment, then over the past several years they organised rubbish clean-ups.

Their latest project was aimed at minimising the littering in the bush, so to make the rubbish bins more visible,

they decided to develop bright designs that would attract people's attention.

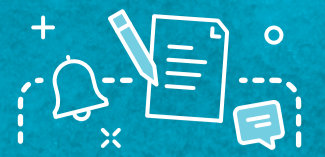
Two Youth Councillors, Zoe Nuttall and Phoebe Elsom, designed the graphics which were approved by the Motueka Community Board, and late last month the bins were wrapped.

Pictured: Zoe Nuttall (left) and Ava Kubo.



Summer is here!
Get your system ready to cope with all your holiday needs.
Commercial and residential liquid waste management
FREEPHONE 0800 725 326
EMAIL bookings@nmwaste.co.nz
nmwaste.co.nz

THINK PLAN DO
Geotechnical Engineering / Environmental Science / Surveying /
Civil Engineering / Structural Engineering / Resource Management
Christchurch | Timaru | Greymouth | Nelson
E hello@do.nz P 0800 999 333 [DO.CO.NZ](https://do.co.nz)



Check out our summer events guide for events happening all across the region, at tasman.govt.nz/summer-events-guide.



Parks events

Mystery Quest

Saturday 14 December, 6.00 pm – 8.00 pm, Washbourn Gardens, Richmond.

Safari Hunt

Friday 20 December, 10.00 am – 12.00 pm, Bill Wilkes Reserve, Richmond.

Riddle Rush

Sunday 5 January, 10.00 am – 12.00 pm, Easby Park, Richmond.

Decoding Adventure

Friday 17 January, 10.00 am – 12.00 pm, Māpua Playground.

Fun events at local parks filled with activities for the whole family. For more information, visit facebook.com/ParksProgramme.

Wellby Talking Café

Wednesday 18 December, 10.00 am – 11.30 am, Motueka Library.

Come along for a relaxed cuppa to start your journey connecting with others who enjoy the same things. You can pop in for a quick chat or stay for a longer conversation with friendly people.

Murchison Christmas Gala

Saturday 21 December, 11.00 am – 1.00 pm, Murchison Sport, Recreation and Cultural Centre.

Come along for a fun-filled afternoon of Christmas cheer! Stalls, entertainment and raffles.

Richmond Community Christmas Dinner

Wednesday 25 December, 11.00 am, Anglican Church on the Hill, Richmond.

The Richmond Community Christmas Dinner is open to anyone. Tickets are free, and you can get one from the Richmond Mall information desk, Age Concern Office, or Church on the Hill Office. A koha is appreciated on the day. They are also asking for people to volunteer to assist with the preparation, serving the meal and clean-up. Please call the Church office to register your interest, 03 544 8844.

Richmond Market Day

Monday 30 December, 9.00 am – 3.00 pm, Queen Street, Richmond.

Enjoy a variety of stalls from around New Zealand as well as specials from Richmond businesses as they line Queen Street, presenting an array of food, clothing, plants, fresh summer produce, local artisan products plus free activities for the kids.

Summer Movies Al Fresco

- **Stop Making Sense**, Sunday 5 January, Junction Green, Tākaka + Community Twilight Market from 5.30 pm.

- **The Three Musketeers**, Friday 10 January, Washbourn Gardens, Richmond.

A great collection of movies new and old screened in beautiful Tasman parks. Load up the couch, gather a group, a delicious picnic, and join us from 7.30 pm to play giant board games and enjoy the region's glorious summer sunsets. Movies start around 9.00 pm. \$2 adult, \$1 child. If it looks like rain, please text 'Is it on?' to 022 406 1665 after 7.30 pm on the night. For up-to-date details see the Summer Movies Facebook page.

Summer reading adventure

Monday 6 January – Friday 28 February, Tasman District Libraries.

Read, explore and discover at your library this summer. A fun programme of reading, challenges and events – and prizes to collect along the way. Explore beautiful Tasman locations with your library this summer when we are out and about in Washbourn and Kiyosato Japanese Gardens, and Murchison and Tākaka Playgrounds. Too much summer sun? Come into our libraries for Lego challenges or to get crafty! To find times and details visit tasmanlibraries.govt.nz.

Motueka Art Group Summer Art Exhibition

Friday 17 January – Saturday 25 January, 10.00 am – 5.00 pm, St Thomas Church Hall, Motueka.

Come and enjoy an exhibition of a collection of over 100 artworks by local artists. This is a free event. We will have 'artists at work' during the exhibition to add to the experience. If you are looking for something special to decorate your walls or as a gift, the artwork is also for sale.

Holiday hours and services 2024/2025

We're on call these holidays. For urgent or emergency issues, you can contact us 24 hours a day on 03 543 8400.

Service centres

All service centres – Richmond, Motueka, Tākaka and Murchison – will close at 4.15 pm on Friday 20 December 2024 and reopen with normal hours on Monday 6 January 2025. This shutdown period also applies to all AA and NZTA services available at our service centres, and these services will not be available during this time.

Libraries

Richmond, Motueka and Tākaka libraries will close at 4.00 pm on Tuesday 24 December and will reopen again with normal hours on Monday 6 January. Murchison Library will be closed during the same time/dates as the Murchison Service Centre. Due dates for library items will be extended, so items will not be due back during the shutdown period. After hours returns chutes at Richmond, Motueka and Tākaka libraries will remain open. Our public Wi-Fi will still be accessible from outside library buildings.

eBuses

There is no eBus service on Christmas Day. On every other public holiday, the eBuses on Routes 1, 2, 3 and 4 will be running on a reduced timetable, and Routes 5 and 6 will not be running. When viewing the timetables at ebus.nz select the holidays tab to see the schedules.

Rubbish and recycling

Rubbish and recycling collections scheduled for Christmas Day and New Year's Day will move from Wednesday to Thursday. Regular Thursday and Friday collections in these weeks will also be one day later. If you leave the area before collection day or have extra,

you can drop your recycling and Council rubbish bags at any resource recovery centre free of charge.

Our resource recovery centres will be closed on Christmas Day and New Year's Day, but otherwise open as normal. Opening hours vary for each centre and you can find details on our website.

Do you have more glass recycling than usual?

Please don't overfill your glass recycling crate, if you do, it won't be emptied. The contents can't sit above the top lip of the crate, and it shouldn't weigh more than 12kg. When the crates are overfilled the bottles can fall and break, risking injuries to our collection team and others.

You are welcome to put out more than one crate and you can buy additional crates from any of our service centres or resource recovery centres for \$31.35.

Kaiteriteri and Mārahau summer rubbish and recycling changes

This summer, there will be a change to the rubbish and recycling collections in Kaiteriteri and Mārahau. Unlike previous years, there will no longer be daily rubbish bag collection or weekly recycling collections. This change was made during the development of our 10-Year Plan to reduce costs.

Rubbish bag collections will remain once a week and recycling collections every two weeks, both on the normal schedules. If you have additional recycling, we encourage you to use the free recycling drop-off container opposite the main car park as you come across the bridge into Kaiteriteri. You can also drop recycling and Council rubbish bags free of charge at our resource recovery centres.



Alcohol applications

Visit tasman.govt.nz/alcohol-notice to see the latest alcohol licence applications.

Maritime events

Event activity: Waterworld Inflatable Waterpark

Date: 17 December 2024 – 19 January 2025
Location: Kaiteriteri

Event activity: New Year's Eve Fireworks Display

Date: 31 December 2024
Location: Torrent Bay

Event activity: New Year's Eve Fireworks Display

Date: 31 December 2024
Location: Kaiteriteri

Event activity: Tata Beach Swim
Date: 7 January 2025

Location: Tata Beach – Ngawhiti Island

Event activity: Cardboard Cup Boat Race
Date: 12 January 2025

Location: Tata Beach

Event activity: JBNZ Nelson Marlborough – Nelson Lakes/Rally Day
Date: 18 January 2025

Location: Lake Rotoiti, West Bay

Under the provisions of the Navigation Safety Bylaw 2024, the Harbourmaster has granted authorisations for these events. Due to navigation safety requirements, water users not involved in these events may be excluded from defined areas during these activities. Further details and any new events can be viewed at tasman.govt.nz/maritime-events.

Council hui

Meetings will take place in person and via Zoom. For details, the Zoom link and recordings of previous meetings visit tasman.govt.nz/meetings-calendar. Unless otherwise stated, all meetings will be held at Council Chambers, 189 Queen Street, Richmond.

Golden Bay Community Board

Monday 16 December, 1.00 pm. Tākaka Office, 78 Commercial Street.

Motueka Community Board

Tuesday 17 December, 4.00 pm. Motueka Library, Wallace Street.

HOUSE & LAND PACKAGES AVAILABLE IN MARSDEN PARK

Contact your local GJ's Nelson team today.

03 543 9502 gjgardner.co.nz

G.J. Gardner. **HOMES**



Zoe Bond PARTNER

Providing practical property, business, estate planning and trust advice.

03 543 8301 | zbond@fvm.co.nz | fvm.co.nz
265a Queen Street, Richmond

