



Property purchase progresses plans

One of our largest planned infrastructure projects over the next two decades has taken another step with the purchase of a block of land at Appleby.

The Richmond South Stormwater Programme is a massive infrastructure project, not only in terms of budget but also in terms of the massive physical works that will be required when construction rolls around. It will involve the construction of more than 10 kilometres of open environmental channels from Richmond Foothills to Waimea Inlet.

We have now bought land that was formerly Waimea Estates Vineyard on Appleby Highway.

This site is a particularly complex section of the overall project due to multiple infrastructure requirements, alongside those of NZTA Waka Kotahi and Network Tasman.

It enables power lines to be moved in connection with the works and has

secured a section of land for a Hope Bypass, which can be transferred to NZTA Waka Kotahi.

This gives us much-needed land for stormwater drainage purposes and will allow the construction of a new bridge on the Appleby Highway.

We will also be able to use the buildings on site and some of the land as a depot to support construction projects.

All equipment from the former winery is being decommissioned by Waimea Estates.

The new stormwater corridor will eventually be developed to look like the Borck Creek area with landscaping, shared paths and plantings.

WONDERFUL WATER



Te Waikoropupū Springs independent review now underway

An independent review of the Te Waikoropupū Springs Water Conservation Order monitoring is underway.

Leading groundwater expert Murray Close from Environmental Science and Research is conducting the review, which started with a site visit in mid-July.

Murray aims to assess the current monitoring system and develop an early warning system to detect changes in water quality. This will involve studying the complex hydrogeology of the catchment and gathering input from residents and stakeholders.

The review is a crucial step in protecting the iconic springs.

Murray will provide a draft report for feedback in early October, with final recommendations due in December.

For more information about this work, visit tasman.govt.nz/tākaka-WCO.



Major Motueka upgrade finished

A key \$4.5 million investment in improving stormwater resilience in part of Motueka is finished.

The Motueka West Stormwater Discharge Project involved constructing culverts to take stormwater underneath High Street, along Lowe Street, across Woodlands Avenue and through the Motueka Christian Fellowship property to Woodlands Drain.

Motueka West is planned to be the main new development area for the town.

The area encompasses 126 hectares of land bounded by Whakarewa Street to the north, High Street (SH60) to the east, King Edward Street to the south and Queen Victoria Street to the west.

Because it's winter and temperatures are a bit colder, our contractor Fulton Hogan has left extra loose chip on Lowe Street to protect the new surface. While it will help the street in the long term, it means traffic will need to be a bit more cautious in the short term.

They'll be out checking this occasionally over the coming months and will touch up any areas as needed.

Navigating our Tasman District waters safely

We have an extensive coastline in the Tasman District with many rivers, lakes and beaches, often in remote areas.

We are responsible for making our waters a safe and enjoyable place for everyone and this role extends out to the 12 nautical mile territorial sea limit.

Our proposed Navigation Safety Bylaw has been developed to ensure navigation safety for all water users in Tasman and is now open for submissions.

Some of the water safety issues we've identified and are looking to address in the bylaw include:

- Requirements for wearing a lifejacket
- Easily identifying a vessel, and its owner or skipper
- Anchoring or mooring
- Visibility of small watercraft
- Communication requirements for all vessels
- High traffic density – commercial vessel tracking.

You can see full details and share your feedback at shape.tasman.govt.nz/navigation-safety-bylaw, via email to haveyoursay@tasman.govt.nz or drop it at one of our service centres. Submissions close 1 September.



© Oliver Weber



Saving building waste from landfill

A large part of our nation's total waste in landfills comes from the construction and demolition industry, and a large proportion of this is recyclable or reusable.

To try and reduce that, we are trialling a new service (Wednesday – Sunday) at the Richmond Resource Recovery Centre to divert more building material from landfill, through reuse and recycling.

You can take your ute or trailer load of building waste through the new materials diversion area under the large white canopies and unload selected materials free of charge, before going across the weighbridge and paying to dispose of any remaining waste. Just follow the blue "C&D" signs to find the diversion area.



We're particular about which building and demolition materials we can and can't take for recycling, but our staff will guide you.

A general guide to what types of materials may be accepted can be downloaded from our website, visit tasman.govt.nz and search 'building waste'.

It's hoped this new trial recovery system, which will run until 8 October, will save you money and tonnes of reusable building waste from being thrown into landfill.

We may need to adapt things as we progress, but if this trial is successful, we hope it can become a permanent feature of our resource recovery operations.

Taking action on climate change

The Tasman region, like many other parts of the world, is facing the impacts of climate change. Rising sea levels, increasing temperatures, and more frequent extreme weather are some of the challenges we face.

We must act now to reduce emissions, prepare for current and future impacts, and respond to the effects we are already experiencing.

We adopted our first climate action plan in 2019 and have recently reviewed it and developed a comprehensive Tasman Climate Response and Resilience Strategy and Action Plan, to guide our efforts to mitigate and adapt to the impacts of climate change.

This strategy guides our transition to a low-emissions, resilient, and innovative organisation, and marks our commitment to local action on climate change.

It aims to reduce greenhouse gas emissions, build resilience and prepare for the unavoidable impacts of changing weather patterns through 2024 – 2035 and beyond.

The budgets included in the Action Plan show where we will invest in climate action over the next 10 years.

[Learn more at shape.tasman.govt.nz/tasman-climate-response-strategy-and-action-plan.](http://shape.tasman.govt.nz/tasman-climate-response-strategy-and-action-plan)



Fatty waste discharges – not grate

We have recently been liaising with a business in Brightwater about their waste disposal habits after our compliance team managed to catch an illegal discharge to the stormwater system red-handed.

Over the last few months, our stormwater maintenance workers observed a sump that contained non-stormwater-related waste. The catchpit developed a very unpleasant odour and contained fatty waste. It had to be cleaned out twice.

When our compliance team followed up with a visit to the site, they caught a person tipping their waste from their business into the sump.

Enforcement action for this incident is being taken – it's a course of action we don't like resorting to but if everyone does the right thing, it's something we won't have to do.

While the offending party seemed okay with their residue liquids and waste going down the stormwater pipes and

out to sea, this is not helpful or healthy for our infrastructure or the environment.

While stormwater runs directly into harbours and the sea without any treatment, we want everyone to do their part in keeping the run-off as clean as we can on its pipeline journey.

As well as the environmental effects, pouring fatty waste and grease down the stormwater drain, kitchen sink, toilet or laundry plughole can potentially clog your drain.

Instead, waste such as cooking oil and grease should be disposed of in regular trash containers. To do so, pour the oil into a sealable container such as an empty coffee can, then place the container in your regular household trash.



Peace from Hiroshima to Tasman

Our Community Partnerships Coordinator Yulia Panfylova recently spent two weeks in Japan where she was selected as one of two interns to work with the Mayors for Peace initiative in Hiroshima.



The Mayors for Peace Network is coordinated by the Hiroshima Peace Culture Foundation (HPCF). Established in 1991, the network aims to achieve global peace and address pressing issues like nuclear disarmament, poverty, and human rights abuses.

We joined the programme in 2021 and are one of over 8000 cities/regions that belong to the Mayors for Peace.

Every year HPCF invites two representatives from their member cities to complete an internship. All costs of travel and accommodation are covered by HPCF.

Interns learn about the atomic bombings that occurred at Hiroshima in August 1945 and encourage the implementation of peace initiatives in their home regions.

During her two week internship, Yulia and her fellow intern – Harun, from Bosnia –

participated in seminars, meeting officials, visiting museums and memorials, as well as presenting to HPCF staff and high school students on Tasman's peace initiatives – such as the annual Peaceful Towns Art Competition.

As well as studying the devastating impacts of the nuclear bomb, there was also an opportunity to learn about Hiroshima's resurrection and peace projects.

Yulia met the Mayor of Hiroshima and presented him with a toki pendant sourced from the Tasman District.

She also met with Hibakusha Keiko Ogura (atomic bomb survivor), who was just eight when the bomb was dropped on Hiroshima.

Entries are open until 1 September for our 2024 Peaceful Towns Art Competition.

You can find all the details to get involved at tasman.govt.nz/art-competition.

FUTURE FOCUS



Feed-bark open on Dog Control Bylaw



We recognise the importance of responsible dog ownership in ensuring public safety, protecting wildlife, and reducing nuisance caused by dogs in public places. It's also important that we provide enough open space for dogs and their owners to enjoy.

Both our dog control policy and dog control bylaw are up for review.

The policy is a legal requirement, and the bylaw enables our dog rangers to enforce different parts of the Dog Control Act.

In the past, these two documents have been separate but needed to cover a lot of the same content. To avoid duplication and ensure information is consistent, we are proposing to combine the policy and bylaw in one document as a one-stop shop for all your dog regulation needs.

Clear guidelines and regulations are essential to address issues such as dogs being off leash in inappropriate areas, failure to clean up after dogs, excessive barking, and incidents of dog aggression.

The policy also addresses operational matters such as setting registration fees and maintaining a register of dogs in the District.

Several zones in the current Dog Control Bylaw are proposed to change. With early engagement feedback from a range of stakeholders as our guide, the draft has prioritised areas that are sensitive for wildlife, while opening up other spaces for controlled exercise.

Find out more and share your thoughts at shape.tasman.govt.nz/dog-bylaw-review, via email to haveyoursay@tasman.govt.nz or drop it at one of our service centres. Submissions close 8 September 2024.

G.J. Gardner. HOMES

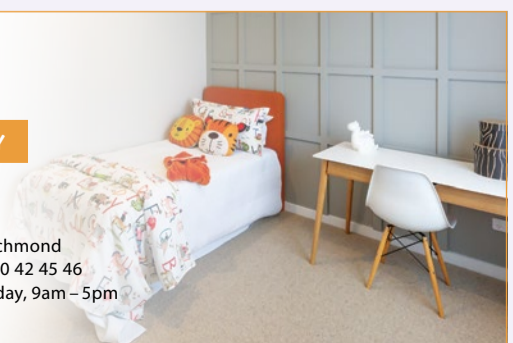
NEW SHOWHOMES OPEN 1PM – 4PM DAILY

48 & 50 Summersfield Boulevard, Richmond

Proud to be sponsoring:



OFFICE 195 Queen Street, Richmond
CONTACT 03 543 9502 | 0800 42 45 46
OFFICE OPEN Monday to Friday, 9am – 5pm
www.gjgardner.co.nz





Upper Moutere path back on track

The project to develop a new roadside path at Upper Moutere is regaining momentum.

As early as 2008, the Moutere Hills Residents Association workshopped ideas for a footpath to link the Village to the Community Centre and sportsground. The concept then made it to our list of district-wide footpath projects, but construction was put on the back burner in 2021 when negotiations with landowners couldn't be completed.

We've since worked with community members and the Upper Moutere Hills



Community Centre to develop designs for a 1300-metre shared concrete and gravel pathway to run alongside the Moutere Highway.

This new shared path will create a safe shared walking and cycle track and provide a new travel choice for the community.

Work is scheduled to start early next year and take about two months to complete.

Pokororo to Peninsular officially open

The latest asset on Tasman's Great Taste Trail is officially open.

More than 70 cyclists and residents gathered at the new Pokororo Swing Bridge last month with our Deputy Mayor Stuart Bryant cutting the ribbon for the opening.

The new section of the trail is 4.5 kilometres long from Pokororo Swing Bridge to Peninsular Bridge at Ngātimoto, with four bridges and elevated boardwalks.

In June, a new interpretation panel was unveiled and blessed in a special ceremony. The panel shares purakau/lessons about the origins of the Motueka awa/river at Pokororo.

It speaks of the importance of the awa to Ngāti Rārua, Ngāti Tama and Te Ātiawa o Te Waka-a-Māui.

There are growing numbers of riders and walkers using this area with the counter on the Baton Bridge recording 6,600 people in the past 12 months.

... And the development of Tasman's Great Taste Trail continues. The Trust is eyeing up the next stage of work which will be between Hoult Valley Road and Wai-iti Domain, pending fundraising and landowner consent.



Speed limit changes await approval

The Nelson Tasman Speed Management Plan has been adopted by the Joint Committee of Tasman District and Nelson City Councils.

The amendments to the plans are based on a change of government direction and the considerable feedback we received during the consultation phase.

The plan is yet to be finalised through the NZTA Waka Kotahi certification process which may take several months. Once that's done, we can start implementing the changes, beginning with some schools in February 2025.

The plan may need to be altered depending on the outcome of the consultation on the 'Setting of the Speed Rule 2024' which is being considered by the Ministry of Transport now.

The following road types will have reductions.

- Variable limits outside school gates for urban and rural schools. Urban schools will be reduced to 30km/h at specific times but these times will be confirmed once the new Setting of Speed Rule 2024 is in place nationally – exceptions to this will be Brightwater School (Ellis Street), Wakefield School (Edward Street), Richmond School (Cambridge Street) and Tākaka Primary

School (Wadsworth Street) which will be permanent 30km/h.

- Narrow, winding, unsealed roads will be reduced to 60km/h.
- Rural residential streets and peripheral streets will be reduced to 50–60km/h.
- Urban streets which do not have footpaths will be reduced to 30km/h.
- The 100km/h sections of the Moutere Highway, Motueka Valley Highway (from Dovedale Road to the existing 80km/h), Neudorf Road, and Dovedale Road (from Neudorf Road to Motueka Valley Highway) will reduce to 80km/h.
- Specified Tasman's Great Taste Trail sections which have on-road cycle sections that are currently over 80km/h will reduce to 60km/h.

There are 18 other specific roads in Tasman that will have speed reductions.

You can see more information at shape.tasman.govt.nz/speed-review.



Big plans for small bridge

Many people probably don't realise it, but there's a small bridge on Lower Queen Street, and that small bridge is about to get a big upgrade.

Borck Creek runs under the Lower Queen Street bridge next to Headingly Lane, but it's not wide enough to pass sufficient stormwater flow.

The new larger bridge will ensure water can flow away better during heavy rain, reducing the risk of flooding with further work being done downstream to widen the channel out to the estuary.

The current bridge is about 14 metres long and is to be replaced by a new 48-metre-long structure which will allow the channel under it to be widened.

Lower Queen Street will largely remain open during construction, with a special vehicle bypass being built around the work site. It'll be about 200 metres long with a 30 km/h speed limit.

There may be occasional times when Lower Queen Street could have to be closed so detours will be put in place. We will share any road closure information via the Antenna app – download it for free from the app store on your phone.

All going well, the \$8 million project is due to start in a few months and is expected to be finished by the end of next year.

EMERGENCY EFFORTS



Shaping our Civil Defence Emergency Management Plan

Every five years, we must review our Civil Defence Emergency Management (CDEM) Group Plan, as required by the Civil Defence Emergency Management Act 2002.

Since our last plan was developed in 2018, the Nelson Tasman region has experienced a number of significant events. Throughout these responses, our current arrangements have been tested and no major changes to the way we operate as a CDEM Group have been identified that would require significant change to the structure of our Group Plan. Our current plan is due to be reviewed now, and while this plan is still fit for purpose, we are proposing to update it in the following way to reflect changes and lessons learnt from responses over the past five years:

- Ensuring our plan details the role of Māori and iwi in emergency management in our region
- Aligning our existing goals and objectives to the National Disaster Resilience Strategy 2019–2029.
- Including a number of improvements to our collective capability to respond to emergencies learnt through recent events

- Updating our regional risk profile to ensure new research and impacts of previous events are incorporated and potential emerging issues are included
- Adoption of the Coordinated Incident Management System version 3 – an updated Government standard that defines how public and private sector agencies work together in an emergency
- Ensuring agency names and positions are updated and correct
- Clarity and readability improvements
- Ensuring alignment with the current iteration of the Civil Defence Emergency Management Act 2002

For more information and to share your thoughts, visit shape.tasman.govt.nz/cdem-group-plan. Feedback is open until 2 September.



Surveying and Resource Management

- Subdivision Design and Management
- Resource Consents and Planning
- Land Development Engineering
- Project Management

81 Selwyn Place, Nelson
Phone 03 548 4422
staigsmith.co.nz

STAIG & SMITHTM
ENHANCING THE LAND



Alcohol advertising at Saxton Field



Following public consultation, the Nelson and Tasman Councils approved an amendment to the Saxton Field Reserve Management Plan which allows for alcohol advertising for international cricket events at the Oval, where there are existing sponsorship arrangements that require alcohol advertising.

The changes were publicly notified and supported by 123 submissions in favour

to 27 in opposition. The vote was passed on 9 July 16-5 in favour of the change.

As exposure to alcohol advertising at sporting events has effects and impacts wider than the influence of behaviour at the venue, the future aspiration is to phase out all alcohol advertising at Saxton Field.

The policy on advertising alcohol at Saxton Field will be reconsidered at the next review of the Reserve Management Plan.



Motueka Community Board

The July Board meeting covered a range of topics, beginning with the public forum presentation by the Tasman Bay Blue Penguin Trust. The Trust is requesting the Council include more protective measures, through resource consent, bylaws, and rules to protect the habitat of native species in areas being heavily built up around the coastline.

The Board also discussed the NZTA installed road barriers from Dominion and Harley Roads, highlighting some feedback from community concerns of feeling less safe. Before the install, there were three fatalities and four serious crashes along that stretch since 2015. Since the install, there have been two known nonfatal incidents.

A unanimous decision was made to remove an Elm tree from a small cul-de-sac. The tree's removal had been requested for many years by a neighbouring property due to its significant local impact. The Board agreed the Elm is beautiful but the developer's choice of tree and planting

location in the 1990s was better suited to a park. Instead, a native Kōwhai will take pride of place.

Informing its decision-making, the Board assesses every concern on a case-by-case. In this case, a site visit, discussions with affected owners and neighbours, and a historic investigation were carried out before the meeting.

To keep up to date with community input and Board business, our recorded meetings can be found on YouTube, and agendas and minutes at tasman.infocouncil.biz. Everyone is welcome to attend Board meetings on the third Tuesday of every month at 4.00 pm at the Motueka Library.

WHAT'S ON IN TASMAN



Community planting day

Sunday 11 August, 9.00 am – 1.00 pm, Cardno Way, Bronte Peninsula North.

Join the Battle for the Banded Rail in their community planting efforts. Everyone is invited! Please bring gloves, a spade and drinking water. Wear solid footwear and clothes suitable for the weather conditions. Morning tea is provided. For more information, email Kathryn at bandedrail@gmail.com.

Planning for industry in Takaka

Monday 12 August, 11.00 am – 12.00 pm, Tākaka Service Centre.

The Tākaka industrial business community is invited to take part in an Urban Growth Plan Change 81 feedback session. Contact environmentplan@tasman.govt.nz.

Wellby Talking Cafés

- **Tuesday 13 August, 10.00 am – 11.30 am, Tapawera Community Centre.**
- **Tuesday 13 August, 1.30 pm – 3.00 pm, Richmond Library.**

Come along for a relaxed cuppa to start your journey connecting with others who enjoy the same things. You can pop in for a quick chat or stay for a longer conversation with friendly people.

Motueka Repair Café

Saturday 17 August, 10.00 am – 1.00 pm, Motueka Library.

A repair café offers free repairs to reduce waste and help the environment. Bring your broken items to be assessed and hopefully repaired by a friendly team of volunteers. Repairs include bikes, electrical, electronic, blade sharpening, sewing, woollens, leather, plastic, toys, and general household item repairs.

Second Hand Sunday

Sunday 18 August, 9.00 am – 2.00 pm.

Second Hand Sunday is a fun way for Nelson and Tasman residents to declutter and re-home unwanted household goods for free. If you have items you want to give away, simply register online before 10.00 am Friday 16 August to be included on the list of participating addresses. A list and map of participating addresses will be available to download from 12.00 pm Friday 16 August. Check out the map to plan your fossicking route and pick up some free second-hand items! For more information and to sign up, go to tasman.govt.nz/shs.

A list and map of participating addresses will be available to download from 12.00 pm Friday 16 August. Check out the map to plan your fossicking route and pick up some free second-hand items! For more information and to sign up, go to tasman.govt.nz/shs.

Author talk: Bruce Cole

Tuesday 20 August, 1.00 pm – 2.00 pm, Richmond Library.

After leaving the military, Bruce discovered he had a passion for writing and decided to incorporate some of his experiences from the time he served into writing *The Settlement – Battle for the Bluff*. Novels available for purchase: \$38.

WordFest – stories with local legends

Tuesday 20 August, 1.00 pm – 2.30 pm, Motueka Library.

Come and meet local legends Maureen Urwin, Claire Hutt and Mikayla Cahill. Listen to their stories and experiences.

Digi Drop-in

Every Friday, 11.00 am – 12.00 pm, Tākaka Library.

If you're struggling to understand how to use your device or want to find out more about the e-resources accessible through the library, we can help.

NEWSLINE NOTICES



Rural sports funding available

Live rural and need a little help participating in sports? The Sport NZ Rural Travel Fund offers help with travel costs for rural sports clubs and rural school teams. The fund helps young people aged 5 – 19 participate in local sports competitions. This round of funding closes Thursday 31 October. Head to tasman.govt.nz/grants for more information and to apply.

Proposed temporary road closures



Applicant: Richmond Unlimited
Event: Richmond Santa Parade
Location: Edward Street, Queen Street, McIndoe Place, Cambridge Street, Wensley Road, Washbourne Drive, Harkness Carpark, Salisbury Road.
Date and time: Sunday 8 December 2024. Closure times 7.00 am Edward Street, 11.30 am all other roads. Finish Edward Street 2.00 pm, 3.00 pm all other roads.

Applicant: Richmond Unlimited
Event: Richmond Market
Location: Queen Street between John Wesley Lane and McIndoe Place.
Date and time: Monday 30 December 2024. Closure times 5.00 am – 6.30 pm.

Applicant: Westland Car Club
Event: Rally Sprint
Location: Matakītaki Road between 1.48km – 11.48km.
Date and time: Saturday 7 December 2024. Closure times 8.00 am – 6.00 pm.

Objections close 5.00 pm, Friday 27 September 2024. Please send any objections to tania.brown@tasman.govt.nz.

Calling Tasman's unsung heroes!

If you know someone who works tirelessly in our Tasman communities with little recognition or reward, please get in touch and nominate them for one of our Outstanding Community Service Awards. Nominees must be residents of Tasman District and have been involved in a range of voluntary activities for 20 years or more. Head to our website – tasman.govt.nz/community-awards – or one of our service centres to fill out a nomination form by 31 August.

Council hui

Meetings will take place in person and via Zoom. For details, the Zoom link and recordings of previous meetings visit tasman.govt.nz/meetings-calendar. Unless otherwise stated, all meetings will be held at Council Chambers, 189 Queen Street, Richmond.

Golden Bay Community Board
 Monday 12 August, 1.00 pm. Golden Bay Service Centre, 78 Commercial Street, Tākaka.

Strategy and Policy Committee
 Thursday 15 August, 9.30 am.

Nelson-Tasman Regional Landfill Business Unit
 Friday 16 August, 9.30 am. Nelson City Council, 110 Trafalgar Street.

Joint Shareholders Committee
 Tuesday 20 August, 9.30 am.

Motueka Community Board
 Tuesday 20 August, 4.00 pm. Motueka Library, Wallace Street.

Operations Committee
 Thursday 22 August, 9.30 am.

NELSON MARLBOROUGH WASTE

Nelson and Marlborough's answer to commercial and domestic liquid waste solutions!

Grease traps / Sumps / Septic tanks / Waste oil / Hazardous waste

FREEPHONE 0800 725 326
 EMAIL bookings@nmwaste.co.nz nmwaste.co.nz