



Te Waikoropupū Springs WCO accepted

We have welcomed the Water Conservation Order (WCO) for Te Waikoropupū Springs released last month by the Minister for the Environment.

The WCO reflects an agreement from all parties involved that the Springs are a very special waterbody and taonga for Mohua/Golden Bay, the Tasman region, and all of New Zealand.

We are now focused on ensuring the WCO can be implemented in a practical way to achieve the best outcomes for the Springs, the wider Tākaka Catchments, iwi and the community.

We are mindful that this decision and the required changes will affect everyone in the area covered by the WCO – the Wharepapa Arthur Marble Aquifer Recharge Area. This includes rural, residential and commercial areas.

We are committed to an independent review of the current monitoring

programme in the Tākaka catchments to identify whether it continues to be fit for purpose and identify any gaps that need to be addressed under the WCO requirements. This review will also identify all costs to implement the order and how this should be funded, through Central Government or from ratepayers.

In our continuing commitment to improve freshwater management in the Tākaka Valley, we will strive to maintain the existing good water quality and health and improve where needed.

We are developing a new resource management plan for this catchment, which will ultimately implement the WCO alongside the National Policy Statement for Freshwater Management.

We are also progressing an Action Plan together with farmers and Manawhenua ki Mohua that will identify actions by the Council and all land and water users in the area to manage nitrates.

WONDERFUL WATER



Tākaka's new dump station is open for business

A new and improved motorhome and caravan waste dump site has been built in Golden Bay and is now operational thanks to help from the Government's Tourism Infrastructure Fund.

The car park layout and traffic congestion at the old dump station next to the Tākaka Information Centre made it difficult for larger mobile homes and caravans to access.

A facility like a dump station needs to be able to provide unlimited access for caravans and mobile homes without the need for unnecessary manoeuvres.

The Tourism Infrastructure Fund has contributed \$107,000 toward the \$180,000 cost of construction and the first year's operation.

Fonterra has been very generous with this project providing us a long-term

lease on the site on Motupipi Street next to the existing wastewater pumping station.

This meant we could build the new dump station and provide added wastewater storage for the pumping station.

The new bigger dump station has twin lanes, twin disposal units and potable water in compliance with the new drinking water standards for campervans and caravans.

In the meantime, we will also keep the old Information Centre site operational until people get used to using the new one.



Problems for Motueka wastewater

Our engineers have noticed that part of the filtration system at the Motueka Wastewater Treatment Plant is showing signs of failure and while it is still functioning, it is not working at most levels.

The area causing concern is the membranes in the final filtering stage of the wastewater treatment process. These membranes remove any remaining bacteria and minute particles before the water is discharged.

By the time the water gets to these membranes, it is close to being completely treated.

The engineers and Wastewater Team are puzzled by why this is happening and are urgently investigating options to deal with the problem, but it's likely the membranes will need to be replaced, which could take several months.

To try and control the situation, we have reverted to a system we used prior to 2016 and are pumping treated water into the adjacent soakage area where it is filtered through the ground.

We are working closely with iwi, Public Health, and the Ministry for Primary Industries to ensure any potential effects are minimised.

As a precaution, people should avoid contact with the water and not take whitebait or shellfish from the adjacent area until further notice.

Warning signs have been erected.



STEP OUT!



Family fun and free firewood at Moturoa / Rabbit Island

Come along and celebrate the end of our month-long Step Out Festival, explore Moturoa / Rabbit Island and take home some free firewood!

Grab a trailer and come down to Moturoa / Rabbit Island on Saturday 28 October between 11.00 am and 2.00 pm to stock up on eucalyptus rounds. You'll find us on the corner of Barnicoat Road and Bullivant West Road – turn left off Ken Beck Drive. Thanks to the PF Olsen team who will be on deck to help with loading trailers.

The wood hasn't been split so you'll need to do that yourself when you get home, and once you've split it, the wood will need to be stacked to dry out before being burned. If you split it soon and store it correctly, it should be good to go next winter.

Our Community Partnerships team will also be down at the Old Domain Picnic Area from 11.00 am until 2.00 pm with a family-friendly event to celebrate the end of Step Out.

Bring the whānau and pack a picnic – we'll supply the outdoor games, and even throw some sausages on the barbecue.

The awesome crew from the Appleby Volunteer Fire Brigade will be there with a fun fire safety activity, and of course their fire truck!

This is the perfect opportunity to get your friends and whānau together to share some kai, play games and explore a beautiful part of our region.

Other Step Out events include:

- **Paines Ford Explore:** Sunday 8 October, 2.30 pm – 4.30 pm, meet at the carpark just before the Tākaka River bridge just out of town going towards Motueka
- **Disc Golf:** Sunday 8 October, 2.00 pm – 5.00 pm, Redstone Golf Park, Wakefield

- **Have Fun Scottish Country Dancing:** Sunday 8 October, 11.00 am – 12.00 pm, grass area at Decks Reserve, Motueka
- **Fitness and Fresh Air:** Tuesdays 10 and 17 October, 11.30 am – 12.30 pm, Bill Wilkes Reserve, Richmond
- **Explore Jimmy Lee Creek:** Wednesday 11 October, 5.15 pm, meet at Lodestone Road, Richmond
- **Dicker Road:** Friday 13 October, 9.30 am – 11.00 am, meet at the carpark opposite Tasman Store
- **Reservoir Creek Walkway, Easby Park to Big Trees:** Saturday 14 October, 9.00 am, Easby Park, Richmond
- **Borck Creek Stormwater Walk:** Saturday 14 October, 10.00 am – 11.30 am, meet at 10.00am at Berryfield Bridge, Richmond
- **Trail Walking Nelson:** Sunday 15 October, 8.30 am, meet at Tic Toc Road, Rabbit Island (turn left after the bridge)
- **Dog Walk and Talk:** Sunday 15 October, 10.30 am – 11.30 am, Saltwater Baths Carpark, Motueka
- **Mummas Move and Connect:** Wednesday 18 October, 10.00 am – 12.00 pm, Coastal Café, Ward Street, Motueka
- **Step Out Shake Out:** Wednesday 18 October, 11.00 am – 12.30 pm, Washbourn Gardens, Washbourn Drive entrance
- **Walking Basketball:** Thursday 19 October, 11.00 am – 12.00 pm, Motueka Recreation Centre

Find out more about these events plus many more on our website, tasman.govt.nz/step-out.

Surveying and Resource Management

- Subdivision Design and Management
- Resource Consents and Planning
- Land Development Engineering
- Project Management

81 Selwyn Place, Nelson
Phone 03 548 4422
staigsmith.co.nz

STAIG & SMITH[™]
ENHANCING THE LAND

Kapa haka nationals come to town

Te Mana Kuratahi 2023 national primary schools kapa haka competition is coming to Nelson and we're getting behind it.

This is a big event for our region. We called for staff from across the Council to put their hands up to volunteer and have had great support from those willing to help run the event.

Te Mana Kuratahi is the biennial national primary schools kapa haka competition, hosted this year by Te Taihū o te Waka a Māui.

There will be 46 kapa haka representing 16 regions across Aotearoa battling it out for top honours during the four-day competition from 30 October until 2 November at the Trafalgar Centre in Nelson.

The competition is designed to nurture tamariki in the traditional Māori performing arts and to develop, enhance and maintain a passion and enjoyment in the pursuit of kapa haka excellence.

For more information, visit temanakuratahi.nz.



TRANSPORT TALES



Old Wharf Road improvements begin

A new and safer connection between the Motueka Recreation Centre and the Motueka Skatepark is now under construction.

This is the first project in our Motueka Transport Choices programme.

Our contractor Fulton Hogan is building a new raised concrete shared path crossing linking the existing trails from Estuary Reserve to Goodman Reserve, including upgrades to the surrounding shared paths and road drainage.

The job's expected to take about six weeks and during this time Old Wharf Road is closed to through traffic.

Detours are in place along either Thorp Street and Tudor Street or Trewavas Street and Wharf Road, but footpaths are still open, and you can still get into the Recreation Centre and Skatepark.

You can keep up to date with this project at shape.tasman.govt.nz/transport-choices-2023/old-wharf-road-raised-crossing.



Subsidised Golden Bay bus fares to continue

A trial of subsidised bus trips over Tākaka Hill is to continue until the middle of next year.

Earlier this year, we were able to secure funding to help pay for bus fares for Nelson and Tasman locals to get to and from Tākaka and Motueka.

The trial has been a success, so working with Golden Bay Coachlines, we can now offer 20 subsidised trips a month until the end of June next year.

It's on a first come first served basis but means we will cover half the cost of adult fares, so it will cost just \$16 to get over the hill.

The kids don't miss out either because with our subsidy it will only cost \$6 to travel between Tākaka and Motueka, or back the other way.

Services run on Mondays, Wednesdays and Fridays.

Passengers will need to prove they are residents by showing some form of ID like a local library card or another proof of address like a rates, power or telephone bill.

Bookings can be made at the Golden Bay Coachlines office on Commercial Street in Tākaka, or by phoning 03 525 8352.





Testing new waters with Tasman Fish Passage Project

With the support of landowners across the District, our Tasman Jobs for Nature Fish Passage Project is on track.

This five-year project is all about making Tasman waterways passable for our native fish.

A field team assesses any in-stream structures (like culverts) to see if fish can pass through. If they can't, or are unlikely to, we try and fix that with the use of materials such as rubber aprons, mussel spat rope and baffles.

As of August 2023, 2,705 of 4,350 assessments have been completed. This project is primarily focused on privately owned land and has had strong support from landowners as 95% of those approached in years one and two provided access.

This mapping of privately owned structures will be valuable data for the fish passage action plans required from every region.



In year three of this five-year project, the field team will be focusing on assessing and remediating efforts in two new areas: Appleby/Wakefield and the south and east of Tākaka.

Landowners with potential in-stream structures will receive a notice in the mail to help them better understand what is involved. And that it is free.

Monitoring is underway at six sites with a significant amount of work planned for this spring to help evaluate the effectiveness of remediations or "fixes" used by the project.

Both the fish passage and wetland projects continue to work in partnership with iwi on monitoring, mātauranga Māori reports and wānanga for rangatahi.

It's purple, it's on the loose and it's causing strife!

As we herald the arrival of spring and look forward to summer, it's a great time of year to enjoy the increased presence of colour as plants blossom and leaves sprout.

However, amongst all the beauty that manifests, there's a species or two that we need to see less of.

Purple loosestrife (*Lythrum salicaria*) is an upright perennial herb that can produce up to 50 stems per plant.

Leaves are arranged in pairs along each stem, and in summer the plant produces striking flower spikes, covered in dense purple-magenta flowers.

Purple loosestrife is a scourge of riparian margins and shallow water areas.

Each plant can produce millions of highly viable, long-lived seeds. These seeds are then spread via water and contaminated machinery along waterways.

Forming tall, impenetrable stands that exclude all other species, they destroy wetlands, marginal habitats and food sources for many fish and bird species, causing blockages and flooding.

Purple loosestrife is a Progressive Containment Pest in the Tasman Nelson Regional Pest Management Plan,

meaning we want to shrink its distribution around Tasman.

While the main infestation lurks in Richmond's urban streams (Borck Creek for example), isolated plants have been found in Matiri Valley and Golden Bay.

If you think you have seen purple loosestrife, please contact our Biosecurity Officers on 03 543 8400 or biosecurity@tasman.govt.nz.



Put an end to your pest problems

Looking to catch some pests in your backyard? If so, you can buy a subsidised pest trap through our backyard trapping programme.

All our Tasman service centres are now back in stock of the following traps:

- Victor snap trap in a wooden tunnel for rats: \$15
- Trapinator traps for possums: \$20
- DOC200 traps in a wooden box for stoats, weasels and rats: \$50

These traps will last you many years of service. The rat and DOC200 trap mechanisms are housed in strong wooden boxes, and our subsidy provides a 50 percent saving on the cost of manufacturing and materials.

Thanks to the great team at the Waimea Menzshed for building the trap boxes for us.

Drop by your local service centre to purchase one today. There is currently a limit of one of each trap type per property.



Making Tasman's waterway information clear

Our Waterway and Estuary Science Team is committed to delivering quality information about the health of Tasman's lakes, rivers and estuaries.

"While we know a lot about this after decades of monitoring them, there are important questions we still don't have answers to," says Senior Resource Scientist Trevor James who oversees much of this work.

"One important question that we get asked is "what is the overall state of our rivers? (all 10,000km of them)".

This is where modelling comes in, and the specialist support of Cawthron Institute. This helps 'join the dots' and understand the likely state of all our rivers, right down to our smallest creeks, which often have particularly high ecological value.

We are currently modelling the macroinvertebrate community index (MCI) – the relative diversity and abundance of different bugs in all rivers.

This tells a very integrated and robust story about river health.

Another question we really want to answer is "how safe is it for swimming right now?" Our regular summer season monitoring shows that rainfall, tides and other factors have a major influence, but it takes a surprising amount of effort and skill to predict accurately.

Lake and estuarine health monitoring is also part of the team's work. The results of this are collated into a number of engaging formats for the public to see. One of these is 'Storymaps', which can be found at tasman.govt.nz/estuaries under the different locations.



FUTURE FOCUS



Tasman decides on a Māori Ward

We will have a Māori Ward for the 2025 and 2028 local body elections after Councillors voted for its establishment following recent legislation enabling Councils to make that representation change.

The one Māori Ward will sit across the entire District with one vacancy to be filled at the next local government election in October 2025. All people on the Māori electoral roll in Tasman will be able to vote for their preferred Māori Ward candidate.

The successful candidate will become a Councillor and provide Māori communities with fair and effective community representation.

The inclusion of the Māori Ward will now be part of the wider regional representation review.

This review will include the location and nature of general wards and the number of Councillors in each ward. It will also investigate the structure of our Community Boards.

We expect to release a proposal for the representation review for public consultation next year.



Councillor Mike Kininmonth, Moutere-Waimea Ward



I want to thank all the volunteers who unselfishly carry out great work, do not seek recognition, but do the work because it matters.

These people are passionate about our towns and villages and have a desire to keep democracy going. They come along to Community Association meetings at night when everyone else is having dinner. They participate in discussions over our roads, cycleways, parks and the future direction of their communities.

Other groups of volunteers turn up in all weather conditions to plant trees and set traps for predators of birds and wildlife so generations to come can enjoy our little slice of paradise.

There are also volunteers who give their time to others less fortunate who may be dispossessed, having a hard time, or just bored and need companionship.

They are not necessarily highly qualified; they understand that small changes over time make big improvements. They chat with each other and form friendships that in some cases are intergenerational. They are what we used to call...the salt of the earth.

All these people are out there doing the mahi so we can all enjoy what we have now and in the future. Without you, the world would not be such a nice place!

If you want to help and become a volunteer, please come forward. I'm sure there will be a neighbour or friend who can point you in the right direction. Otherwise, contact Tasman District Council about how to join one of these groups.



Motueka Community Board

It is pleasing to see the completion of a long-term project, the Motueka Skatepark. This was supported by the Board's Special Projects Fund, external funding from Lottery Grants, Rātā Foundation and the New Zealand Community Trust through funding from Hotel Motueka. This has resulted in a significant upgrade to the skatepark, a truly valued and well-utilised community facility.

A question regarding playgrounds in Motueka was asked through the public forum, asking how playgrounds were assessed and maintained and how the benefit to the community was measured. Officers advised that external contractors assessed the safety of specific equipment against national safety standards and in any upgrade where equipment could be relocated and used, this was undertaken.

The Board has had both Thorp Bush and Decks Reserve as projects of focus. At the September meeting, the Board received a concept plan based on the Board's and Motueka Youth Council's desire to upgrade Decks Reserve to a more accessible playground as well as an option to host a 3-on-3 outdoor basketball court. The planning is in the early stages and will be dependent on available funding.

WHAT'S ON IN TASMAN



Speak Up Festival

Saturday 21 October, 5.30 pm – 8.00 pm, Washbourn Gardens, Richmond.

Join the Waimea Youth Council for a fun night with local youth bands, free yummy kai, speakers, and games for teens. Enjoy a night with friends to support mental health awareness.

Wellby Talking Cafés

- **Tuesday 10 October, 10.00 am – 11.30 am, Tapawera Community Centre.**
- **Tuesday 10 October, 1.30 pm – 3.00 pm, Richmond Library.**
- **Wednesday 18 October, 10.00 am – 11.30 am, Motueka Library.**

Wellby Talking Cafés welcome everyone for a relaxed cuppa to start your journey connecting with others who enjoy the same things. You can pop in for a quick chat or stay for a longer conversation with friendly people. There is no need to register, just turn up on the day.

Reminiscent Recipes

Tuesday 17 October, 11.00 am – 12.00 pm, Motueka Library.

Bring along your favourite recipe and share with others why it's special to you. Talk food, make new friends and come away with new recipes to try. Free.

Author talk: April May

Tuesday 17 October, 1.00 pm – 2.00 pm, Richmond Library.

Come along to this free author talk with April May, the author of *He is Faithful*. She writes books that will encourage, inspire and breathe hope into readers.

Laughter Yoga

Friday 20 October 12.00 pm – 12.45 pm, Motueka Library.

Join us for 45 minutes of playful interactive laughter exercise. Laughter Yoga can be done sitting in a chair, so it is accessible for all. Free.

NEWSLINE NOTICES



Proposed temporary road closure

Applicant: Golden Bay Workcentre Trust.
Event: Santa Parade.

Location: Commercial Street, Junction Street and Reilly Street, Tākaka.

Date and time: Saturday 9 December 2023, 9.00 am – 3.00 pm.

Objections close: 5.00 pm Friday 20 October 2023. Please send any objections to jeni.thornborough@tasman.govt.nz.

Apply for arts and festivals funding

Our Creative Communities Scheme has funding available to help groups and individuals running arts projects in Tasman. Creative Communities provides funding to support community involvement in the arts – music, theatre, mural painting, outdoor sculptures, art in public spaces, kapa haka, singing, art workshops and more.

Creative Communities also has a new one-off funding boost available specifically for festivals! The Creative Communities Festival Fund is designed to support established festivals that celebrate the life experiences, stories, cultures, and regional identities of New Zealanders who continue to be impacted by the effects of Covid-19 in 2023.

Apply for either funding by Friday 10 November. You can find further information and apply on our website, visit tasman.govt.nz/grants.

Dogs and owners doing better

Every year we produce a report looking at our dog control policies and practices.

In summary, dog numbers across Tasman have increased in urban areas and three people have been disqualified from owning dogs. People seem to be better at controlling their canine companions with a drop in the number of complaints about wandering and lost dogs.

One standout feature of the report is residents are pleased with dog control operations with a satisfaction rate of 92 percent. The full report is available on our website, visit tasman.govt.nz and search 'dog policy'.

Council hui

Meetings will take place in person and via Zoom. For details, the Zoom link and recordings of previous meetings visit tasman.govt.nz/meetings-calendar. Unless otherwise stated, all meetings will be held at Council Chambers, 189 Queen Street, Richmond.

Golden Bay Community Board

Monday 9 October, 1.00 pm, Tākaka Office, 78 Commercial Street, Tākaka.

Motueka Community Board

Tuesday 17 October, 4.00 pm, Motueka Library, Wallace Street.

Environment and Regulatory Committee

Thursday 19 October, 9.30 am.

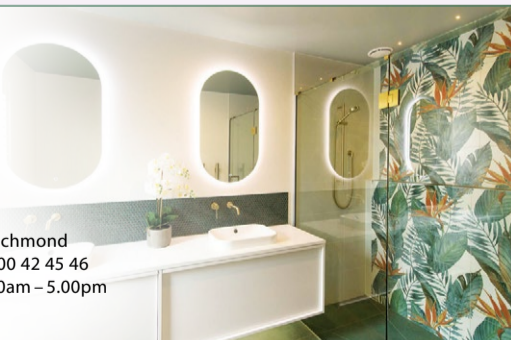
G.J. Gardner. HOMES

NEW SHOWHOMES OPEN NOW

48 & 50 Summersfield Boulevard, Richmond



Proud to be sponsoring:
OFFICE 195 Queen Street, Richmond
CONTACT 03 543 9502 | 0800 42 45 46
OPEN Monday to Friday, 9.00am – 5.00pm
www.gjgardner.co.nz



NELSON MARLBOROUGH WASTE

Providing liquid waste management solutions to all
Businesses, local authorities and government agencies

FREEPHONE 0800 725 326
EMAIL bookings@nmwaste.co.nz nmwaste.co.nz

Is your water safe?
Get the best from your water, take the worst out of it!
Water purification / Filtration / UV sterilisers / Water softening

Water testing service available

thinkwater. TASMAN BAY 03 528 8888