



# NEWSLINE

PĀNUI 2 JUNE 2023  
ISSUE 547

tasman district council Te Kaunihera o te tai o Aorere

KEEPING YOU INFORMED ABOUT NEWS AND EVENTS IN TASMAN DISTRICT



## It's time to shine a light for Matariki

We want you to produce some artistically bright ideas to celebrate Matariki.

Matariki signals the Māori New Year. It is a time of renewal and celebration in Aotearoa that begins with the rising of the Matariki star cluster, and this year is officially celebrated on Friday 14 July with a public holiday.

The challenge is to create an illuminated artwork to mark this special event.

Create a light lantern, light sculpture or light display which encompasses the essence or a component of Matariki to be in to win a class, business, or household lunch shout!

Be as resourceful and creative as you like but you need to ensure your entry is battery-powered, transportable and represents Matariki.

There are three categories:

- Best in Business (team max 30)
- Best Class in School (class max 30)
- Best in Residential (household)

The Te Papa website is full of information and inspiration, visit [tepapa.govt.nz](http://tepapa.govt.nz) and search Matariki.

To enter, email a photo of your entry to [events@tasman.govt.nz](mailto:events@tasman.govt.nz) before noon on Friday 7 July.

We will then display your photo on our Facebook page and invite people to "like" their preferred entry in each category. The photo with the most "likes" in each category by the end of the competition wins.

All entrants are invited to bring along their creation and display it at Washbourn Gardens' Matariki Celebration on Thursday 13 July where people can get a close-up look at entries and decide which is their favourite to vote for.

The Facebook competition will open at noon Monday 10 July, and finish at noon Monday 17 July.

## FUTURE FOCUS



## We asked, you spoke, we heard

We are currently developing our Annual Plan. Public consultation on the draft Annual Plan was open in April and we received 97 submissions. At a public hearing on 18 and 19 May, 33 people presented their submissions in person.

The main theme of public feedback was that submitters supported the proposed budget reductions but felt that the proposed rates increase is still too high and that further reductions are required.

The other key themes we heard were:

- Requests to reduce the budget for 'nice-to-haves' and focus on core services.
- Concerns regarding the cost of living.
- Suggestions to further reduce the staffing budget and reduce staff numbers.
- Requests for further reductions to the parks and reserves maintenance budget.
- Opposition to the budget reductions to river and stormwater management.
- Opposition to deferring funding for the Motueka Pool.

Most submitters were in favour of all the budget reductions that we proposed. The three reductions that

had less support were lower budgets for Three Waters maintenance (76% support), pausing our programme to reduce stormwater entering wastewater systems (70% support) and reduced river management (54% support).

Councillors are meeting this week to discuss the submissions and make recommendations for any changes to our Annual Plan. The Council will then meet on 22 June to adopt the final Annual Plan.

[You can read the submissions we received and a summary of the feedback at \[shape.tasman.govt.nz/annual-plan\]\(https://shape.tasman.govt.nz/annual-plan\).](https://shape.tasman.govt.nz/annual-plan)



## What's new for tranche two?

The announcement of the revised Three Waters programme – Affordable Water – in April has provided a reset of what the proposed reform will involve for councils across the country, including Tasman.

This has also brought about changes to the Better Off Funding offered to councils in recognition of the significant transfer of responsibility for three waters service delivery.

Under the new structure, funding under the tranche one allocation remains available and we are currently progressing these 21 projects.

However, the second tranche of funding will not proceed. Our list of potential tranche two projects to invest in had not yet been confirmed and was expected to be finalised in early 2024.

As a result, the changes have impacted three key community facilities which

would have required further funding in the next phase.

These are the Motueka Community Pool, the Waimea South community facility and the Tapawera hub, which were allocated funding for feasibility and design in tranche one.

We now have the task of working out a future for these projects. In the current challenging economic environment, this is not an easy job.

At this stage, further investment in these projects will be subject to 10-Year Plan discussions in the months ahead.

However, this also means that if the community and the Council still want to see these projects completed, then it is likely that money will need to be sourced from rates, which may have an impact on rate increases.

## Find the right place for your event

We are lucky to have so many great recreation locations across Tasman District, but did you know you can book many of them for your own special event?

For some big occasions, you need to book our parks, reserves or halls months in advance, and it can all be done online.

It is important, however, to understand more about the various locations, including the available facilities and some of the

restrictions that need to be considered, and these too are on our website.

You may already know where you would like to have your event, but if you are unsure there is a list of parks and reserves that we take bookings for and a calendar to show what's available and when.

To book a location, visit [tasman.govt.nz/booking-a-park-or-reserve](https://tasman.govt.nz/booking-a-park-or-reserve).





## A new link to Tasman's Great Taste Trail

A new bridge, a bit of track realignment, and a new pathway are all designed to enhance the cycling experience of users of Tasman's Great Taste Trail near Richmond.

The coastal section of the trail near McPherson Stream is prone to flooding during spring tides and is also subject to erosion.

Thanks to an agreement with an adjacent landowner, we've been able to make improvements to the area to get around the problems.

A new bridge has been constructed and the track has been moved to slightly higher ground.

It has also allowed us to build a new pathway to link Tasman's Great Taste Trail directly to McPherson Street.

A landscape planting programme is planned for later this month.



## Winter driving changes everything

Winter is here, and it's important we are all extra cautious on the roads. Whether you're driving, cycling, riding a motorcycle, or walking, safety is key. Here are a few things to consider to stay safe:

### Ensure you're visible:

- When it's dull, rainy, or foggy, turn on your lights on low beam.
- Keep your windows clear by using your car's demister or air conditioning.
- Don't let that winter sun blind you! Be aware of sun strike in the early morning and late afternoon.
- Frosty nights can be a pain, but you can cover your windscreen, or use an ice scraper or cold water to get rid of the ice.
- If you're walking or cycling, wear bright clothes or use bright lights.

### Slow down:

- Give yourself some extra space on the road by increasing following distances. Stopping distances can be up to ten times longer.

- Take it easy. Wet or icy conditions can be treacherous, and all it takes is a split second of inattention to lose control.
- Keep an eye out for icy patches in shady areas and on bridges.
- Give yourself more time to reach your destination.

### Stay informed:

- Want to know the latest road conditions? Visit [nzta.govt.nz/traffic](http://nzta.govt.nz/traffic) and [tasman.govt.nz/road-conditions](http://tasman.govt.nz/road-conditions).

The safest way to get where you need to go this winter is by slowing down and adapting to the conditions.

**Oh, and here's a little bonus for you: Drop by your local service centre and grab a free ice scraper and windscreen cloth!**

## No more metals at Māriiri in the meantime

We're laying a new concrete pad at our Māriiri Resource Recovery Centre (RRC) at Motueka, which means we must pause taking scrap metal at the site.

The new heavy-duty slab will provide an improved base for the metal collection storage area, but we've had to clear it out so the job can be done.

While the building work's underway, there will be no room on site, so we won't be able to receive scrap metal. This means people will have to take any metals to a scrap metal dealer or another RRC.

Nelson City Council's Tāhunanui RRC in Pascoe Street receives scrap metal seven days a week, while Sims Metal on Merton Place in Annesbrook and Nelson Scrap Metals on Pascoe Street are open weekdays and will pay for your old scrap.

The last day we will accept scrap metal at Māriiri is Monday 5 June (King's Birthday weekend) and we expect to start accepting metal at the site again sometime in September.



## Come play with us

Over the next few issues of Newsline, we will be taking a tour of some of our new parks, playgrounds and recreational areas across Tasman.

Reserves are an important element of our neighbourhoods and rural areas, providing safe recreational spaces for people to enjoy the great outdoors. These are special open areas which offer spaces for passive and active use.

We're starting the tour with the youngsters' playground in Central Park in The Meadows in Richmond West which was completed late last year.

This playground is designed and built especially with the little ones in mind with the ground covered in special shock-absorbing composite matting.



Situated in the hospitality precinct of the neighbourhood, the playground is landscaped with low-growing plants which means parents can keep an eye on their youngsters from the nearby venues.

To complement the surrounding commercial buildings and houses, all the structures in the playground, like the climbing equipment, slide and swing have been built in matching styles and finished in similar colours.

... And the young users and their parents told us they love it!

## Motueka Skatepark work begins

Work on the new look Motueka Skatepark is underway which means it's off limits until the job's done, but the wait is going to be worth it!



The project has been in the pipeline since 2018 when a group of BMX riders came to us asking for something a little more extreme at the 20-year-old park on Old Wharf Road.

We then asked people in the community what they'd like to see incorporated into the facility and a preliminary design was put together.

This was tweaked to cater for multiple types of use, including skaters and scooter riders, and all levels of experience. Resource consent was successfully applied for and the final design for this community asset was drawn up.

Construction is expected to take a couple of months.

## The Hope Hall and Reserve Committee is looking for volunteers

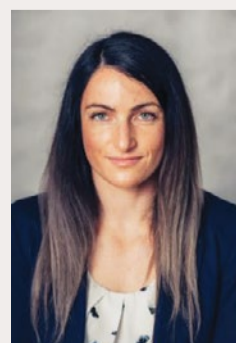
Hall committees oversee the day-to-day management of facilities and make decisions regarding hire fees, use, maintenance, improvements and the best way to utilise the support from us.

Through one meeting every three months, you as a committee member of your local hall and/or reserve can ensure your community has a well-maintained and used facility.

The election process is simple – if you are interested, turn up to the election meeting and register your interest.

The Hope Hall and Reserve Committee AGM is on Monday 12 June from 6.30 pm at the Hope Recreation Hall, 184 Main Road Hope.

**For more information, call Jane Park on 03 543 8400.**



**ZOE BOND** SENIOR ASSOCIATE

Providing practical property, business, estate planning and trust advice

03 543 8301 ▲ [zbond@fvm.co.nz](mailto:zbond@fvm.co.nz)  
265a Queen Street, Richmond  
[www.fvm.co.nz](http://www.fvm.co.nz)

FLETCHER VAUTIER MOORE  
LAWYERS





## Long live our Coronation Tree – happy and arborous



As the pomp and pageantry played out in Westminster Abbey and through the streets of London last month, here in Tasman we planted a low-key tribute to King Charles III that we hope will last well beyond the reigns of many monarchs.

On Thursday May 11, Mayor Tim King was joined by children and teachers from Waimea Kindergarten as well as staff from our Reserves team and contractors Nelmac to plant a *Tilia Europaea*, AKA European lime or common linden at Richmond's Jubilee Park.

The tree is a deciduous variety that can grow up to 50 metres tall, making it a

useful sports-watching tree with plenty of shade during the summer cricket season and a clear view of the game during the rugby season.

It's expected that the tree will have a long life – meaning that our commemoration of the King's crowning will continue to stand tall as subsequent monarchs take the throne.

And just as importantly, we hope that youngsters will be able to revisit this spot in the years to come with friends and family – even their own descendants – to remember the day.

If you're out and about in Richmond, you'll find our Coronation Tree on the Railway Reserve side of the rugby grounds, beside the first floodlight south of the skatepark.



## Community grant helps community security

A Richmond community has been able to tackle security head-on thanks to help from one of our community grants.

Security cameras are to be installed in the Berryfields area after a spate of thefts prompted a local resident, with assistance from the Richmond Community Patrol, to take action.

Secretary and treasurer for the Richmond Community Patrol Mike Gill says resident Pat Lithgow became aware of the theft of equipment from building sites and other antisocial behaviour so decided to act.

The cost of the network of nine cameras is around \$25,000, so the Community Patrol stepped in and helped make a grant application and pursued other fundraising avenues. We were able to assist with a \$3,000 community grant.

The CCTV network will link directly to the police station and have a

three-month memory – the cameras will help police identify who is going in and out of the area.

A similar project in Brightwater a couple of years ago has helped keep a lid on crime and even assisted in the recovery of the Lord Rutherford statue when it was stolen.

The Richmond Community Patrol is staffed by volunteers who are the eyes and ears of police on the streets, mainly on weekend nights, and Mike Gill is keen to hear from anyone who would like to join them.

**If you want to get involved, contact Mike on 027 286 4157.**



## Pretty pest plant due for exclusion

They're lovely to look at, but Water Hyacinth (*Eichornia crassipes*) is an aquatic pest weed that we want to keep out of our region.

We understand that this plant may already be present in the community, so it's very important that any discoveries are reported so they can be removed and disposed of safely.

Because of its aggressive, fast-growing nature, water hyacinth is one of the world's most serious water weeds. It can rapidly form dense mats over water, smothering and out-competing other aquatic plants by blocking light and monopolising space.

It can block waterways causing flooding and irrigation issues, and reduce water quality, affecting the whole aquatic ecosystem.

It consists of a floating rosette of shiny, thick, rounded green leaves, with feathery roots that hang in the water.

A single flowering stalk with a cluster of pale lilac flowers, each with a single yellow spot, is produced from the rosette. Plants produce floating horizontal stems from which new plants arise.



Because of the potentially catastrophic impacts of this pest in New Zealand, MPI runs a national eradication programme for water hyacinth.

Under the law, it is classed as an unwanted and notifiable organism and cannot be legally grown, shared, displayed or sold in New Zealand.

**If you think you have water hyacinth on your property or have seen it in the District, please contact our Biosecurity Team on 03 543 8400 or [biosecurity@tasman.govt.nz](mailto:biosecurity@tasman.govt.nz), or MPI on 0800 80 99 66.**

## It's time to register your dogs

Whether you have a Rover or a Rex, a Brutus or a Boris, Poodle, Pomeranian or hard-working Huntaway, there's one thing that must happen to all canine Tasman fur babies and working rural hounds – they must be registered by July.

Registration fees are \$53 for a dog on a property under 1 hectare (urban), and \$32 if your property is over 1 hectare (rural).

Dogs need to be registered by 1 July each year. Any dogs that are still unregistered and unpaid on 1 August will incur a 50% penalty fee.

We are sending out registration forms to currently registered dogs, or you can download a registration form from our website.

You can return your registration form:

- By email to [dog.control@tasman.govt.nz](mailto:dog.control@tasman.govt.nz)
- By post to Dog Control, Private Bag 4, Richmond 7050
- In person to any Council Service Centre.

If any of your details have changed, such as your address or phone number, the number of dogs you own etc, please let us know on your registration form.

You can pay your registration fee by:

- Bank transfer to account 12-3193-0002048-03
- Online with a credit card (fees apply)
- In person at a Council Service Centre.

Please make sure you use your dog owner number as reference when paying online.



## G.J. Gardner. HOMES

VISIT OUR SHOWHOMES

86 & 88 Berryfield Drive, Richmond

**CONTACT** 03 543 9502 | 0800 42 45 46

**OFFICE** 195 Queen Street, Richmond

**OPEN** Monday to Friday, 9.00am – 5.00pm

[www.gjgardner.co.nz](http://www.gjgardner.co.nz)

Proud to be sponsoring:

## THINK PLAN DO

Engineers / Surveyors / Planners

Land Surveying / Resource Management  
Environmental Science / Geotechnical Engineering  
Civil and Structural Engineering

Level 1, 42 Oxford Street  
Richmond 7020  
0800 999 333

[nelson@do.nz](mailto:nelson@do.nz)  
[www.do.nz](http://www.do.nz)

**do DAVIS OGILVIE**  
ENGINEERS / SURVEYORS / PLANNERS

**Do you have a bach in the Abel Tasman? We will be emptying septic tanks in winter, via barge, for all those hard-to-reach homes. Book online or give us a call to enquire.**

**FREEPHONE** 0800 725 326  
**EMAIL** [bookings@nmwaste.co.nz](mailto:bookings@nmwaste.co.nz)

**nmwaste.co.nz**





## Councillor Trindi Walker, Motueka Ward

As we are all aware, climate change now results and probably will do for some time to come, in some of the extremely wet weather we have been experiencing.

We have to adapt to these changing circumstances and others including those of high inflationary pressures and increasing costs for materials and services. It means that the Council's long-term plan has to become more agile and demands a more integrated and flexible approach to the constant change and challenges that appear with little or no warning.

Nonetheless, some projects cannot be deferred – the reason being that in the long-term they will have significantly higher costs and reduce the amount of money required for future investment.

In all of this, it stands to reason that inspiring well thought through pliable responses, rather than a business-as-usual approach to these tricky hurdles, is necessary.

Wisdom is an elusive human virtue, but the matter of taking your voice into Council decision-making, whether it be for addressing core business matters, homelessness of vulnerable members of our community, protection from natural hazards, or the myriad of responsibilities that we all must deal with in the Tasman District, this Councillor is aware and committed to the very best outcomes for all of us.



## Golden Bay Community Board

In this column, we are introducing Henry Dixon. Since Henry joined the Golden Bay Community Board at the end of 2022, he has been rapidly getting up to speed with the ins and outs of the Board operations, the wider functioning of the Council, and local governance in general.

He is taking opportunities to upskill through training sessions and workshops whenever they are offered. He particularly enjoyed attending hui at the marae around the region learning about local history and Te Ao Māori.

For Henry, being an effective board member means engaging with a range of groups and individuals in the community. Henry has an interest in youth wellbeing in Golden Bay and has met with school staff and youth

representatives to discuss ways the Board can best support the needs of young people in the Bay.

He is also keen to see Golden Bay grow and prosper sustainably. This means ensuring key infrastructure is made fit for purpose and is futureproofed for the environmental, social, and economic challenges that lie ahead.

The future development of Port Tarakohe and aquaculture in Golden Bay, and the provision of sufficient affordable housing options for residents are two areas Henry is particularly interested in.

He is looking forward to continuing to serve the residents of Golden Bay over the rest of his term. A big part of his role is to advocate on your behalf so don't hesitate to get in touch if you'd like to chat.

# WHAT'S ON IN TASMAN



## Community planting day

**Sunday 11 June, 9.00 am – 1.00 pm, Moreland Place, Māpua. Access from Moreland or Rana Place.**

Join the Battle for the Banded Rail in their community planting efforts. Everyone is invited! Please bring gloves, a spade and drinking water. Wear solid footwear and clothes suitable for the weather conditions. Morning tea is provided. For more information, email Kathryn at bandedrail@gmail.com.

## Wellby Talking Cafés

- **Tuesday 13 June, 10.00 am – 11.30 am, Tapawera Community Centre.**
- **Tuesday 13 June, 1.30 pm – 3.00 pm, Richmond Library.**
- **Wednesday 14 June, 1.30 pm – 3.00 pm, The Wholemeal Café, Tākaka.**
- **Wednesday 21 June, 10.00 am – 11.30 am, Motueka Library.**

Wellby Talking Cafés welcome everyone for a relaxed cuppa to start your journey connecting with others who enjoy the same things. You can pop in for a quick chat or stay for a longer conversation with friendly people. There is no need to register, just turn up on the day.

## Composting workshop

**Saturday 3 June, 10.00 am – 12.00 pm, Willowgrove Organic Nursery, 86 Appleby Highway.**

The Nelson Tasman Climate Forum is offering a two-hour workshop on planning and building a compost heap. This is an interactive hands-on workshop where you will learn to construct one yourself using local and seasonal materials to enrich soil life and produce healthy chemical-free food for your family. Please bring a snack, drink, gloves, boots and a hay fork if you have one. Free entry – a koha is

welcomed. Please register by emailing carolynhughes@foulis.nz.

## Jigsaw swap

**Tuesday 12 June – Saturday 17 June, Tākaka Library.**

Perfect for those long winter evenings. Bring a puzzle, take a puzzle. Bring more, take more. Free to participate.

## Art talks and workshops

**Sunday 4 June – Saturday 10 June, Motueka Library.**

Motueka Art Group is hosting a week-long exhibition of their work and an inspiring series of events. Bookings are essential as spaces are limited. To book your spot, pop into the library or call 03 528 1047. All events are free to attend, and no art experience is necessary.

- Tuesday 6 June – Saturday 10 June, The Big Picture Collaborative Art Project
- Tuesday 6 June, 10.00 am – 12.00 pm, Print Making Workshop
- Tuesday 6 June, 2.00 pm – 3.00 pm, Talk: The Three 'M's – Monet, Matisse + Mondrian
- Wednesday 7 June, 10.00 am – 11.00 am, Art Quiz (with prizes)
- Wednesday 7 June, 1.30 pm – 3.30 pm, Stitching Workshop
- Thursday 8 June, 10.00 am – 12.00 pm, Greeting Card Workshop
- Thursday 8 June, 1.30 pm – 3.30 pm, Abstract Art Adventure Workshop
- Friday 9 June, 10.00 am – 12.00 pm, Stencilling Workshop
- Friday 9 June, 2.00 pm – 3.00 pm, Talk: The Rock Fella

Visit [tasmanlibraries.govt.nz/motueka-art-group](https://tasmanlibraries.govt.nz/motueka-art-group) for further details.

# NEWSLINE NOTICES



## Moturoa / Rabbit Island pheasant hunt

Public access to the eastern half of Moturoa / Rabbit Island will be closed for three organised game bird hunts this winter. The closure will include all the beach front at the eastern end. The first of these hunts will take place on Saturday 3 June, 7.00 am – 2.00 pm (Sunday 4 June reserve day).

Nelson Marlborough Fish & Game organise the hunts, which are permitted under the Moturoa / Rabbit Island Reserve Management Plan. The hunts are timed to coincide with low tide to avoid any effect on shore birds. For more details contact Jacob Lucas at Nelson Marlborough Fish & Game on 03 544 6382.

## King's Birthday public holiday hours and services

All service centres and libraries will be closed for the public holiday on Monday 5 June. Usual opening hours apply otherwise. We are always here to help when needed, call 03 543 8400 for assistance, 24 hours a day, seven days a week.

There are no changes to rubbish and recycling collections. All Resource Recovery Centres will be open as normal.

## Community Grant funding

Do you have an exciting community project in the pipeline? A Community Grant could help make it happen. Community Grants help get some of our most valuable community projects off the ground, and applications are open now.

The criteria are broad and cover a range of categories including but not limited to service groups, festivals, and sports clubs through to welfare groups, arts, culture, heritage, and environmental organisations.

We'll be looking at projects that are either Tasman-based or will help Tasman

residents, meet a community need and have community support.

Applications close Monday 31 July. Apply here: [tasman.govt.nz/grants](https://tasman.govt.nz/grants).

## Tasman Resource Management Plan (TRMP) updates

**Public notification of Plan Change 73 – Omnibus 2 Amendments, Plan Change 75 – Growth, Brightwater and Plan Change 77 – Growth, Murchison.**

Plan Change 73 is now operative. No appeals or submissions against the proposed changes were logged with the Environment Court. This update also releases the decision for Plan Change 75 – Growth, Brightwater and Plan Change 77 – Growth, Murchison. The TRMP has been updated to reflect these changes. An updated version of the TRMP is available online. For further information, visit the news and notices section on our website.

## Council hui

Meetings will take place in person and via Zoom. For details and the Zoom link visit [tasman.govt.nz/meetings-calendar](https://tasman.govt.nz/meetings-calendar). Unless otherwise stated, all meetings will be held at Council Chambers, 189 Queen Street, Richmond.

## Audit and Risk Committee

Thursday 8 June, 1.00 pm. No public forum.

## Golden Bay Community Board

Monday 12 June, 1.00 pm. Golden Bay Service Centre, 78 Commercial Street, Tākaka.

## Golden Bay Rec Park Management Committee

Wednesday 14 June, 9.30 am. Golden Bay Rec Park Centre, 2032 Tākaka Valley Highway.

## Enterprise Committee

Wednesday 14 June, 1.30 pm.

## Environment and Regulatory Committee

Thursday 15 June, 9.30 am.