



# NEWSLINE

PĀNUI

24 FEBRUARY 2023  
ISSUE 540



## Riders enjoy new Richmond cycle lanes

Salisbury Road's new test layout of separated cycle lanes is in place and seems popular with users.

This is the first phase of our Waka Kotahi funded \$2.4 million Richmond Streets for People project, which will begin to create a complete network of safe walking and cycling spaces in our streets.

Year 11 Garin College student Nate Wilbourne faces the traffic every day when cycling to school so signed up for the community working group to try and improve the situation.

He says the Streets for People programme lays the foundations of safer cycling and walking into the future.

"It's about seeing the long game and improving the situation now for future generations".

Nate says being part of the working group has been very worthwhile.

"Interacting with other people from the community and sharing differing perspectives to achieve a worthwhile outcome is very pleasing."

Nate is keen to continue as a member of the working group and says he'll be keen to encourage a few more of his college peers to be part of the Streets for People project.

Monitoring and evaluation of the new Salisbury Road layout is underway. A survey is on our website and we're looking for feedback from all road users. To have your say visit [shape.tasman.govt.nz/streets-people](https://shape.tasman.govt.nz/streets-people).

Our designers and working group of community representatives are now working on potential designs for Wensley Road and Oxford Street.

## Councillor Glen Daikee, Richmond Ward

At a time when many are finding it financially difficult, I am aware of the need to focus on core responsibilities while also addressing issues. When belt-tightening at Council, we must make sure that we're getting value for money and that spending is properly allocated maximising benefit, while mindful that we don't kick the can down the road for future generations.

As Council evaluates the communities' needs against the costs associated with providing them, we often face difficult decisions. There are times when a necessity outweighs the cost. Other times, sacrifices must be made to balance expenses within a reasonable budget.

Community needs of individuals and families vary greatly. For example, some areas may need basic infrastructure improvements, while others need transportation improvements or access to better facilities. No matter the

need, Council considers the costs associated with providing these services on the rate payer.

The most critical aspect of managing this is understanding the needs of you, the resident. Your feedback through chatting in the street, written submissions, or using [shape.tasman.govt.nz](http://shape.tasman.govt.nz) is much appreciated and heard.

In some cases, upgrades can be delivered at virtually no cost to the rate payer, being subsidised by central government as with Transport Choices / Streets for



People funding packages. This sees the delivery of \$21.6 million of urban roading, walking and cycling improvements across Tasman.

Yes, there will be challenges this year, however I look forward to enthusiastically working alongside a competent and dedicated team to deliver for residents.

Be safe, be healthy, be happy.

## Pōhara flood protection work continues

We have been working for some time on investigating ways of improving stormwater requirements in Pōhara and have designed a series of improvements to reduce the risk of flooding to properties in future storms and heavy rain events.

Stage one was completed on Selwyn Street with a timber retaining wall and stage two began this week.

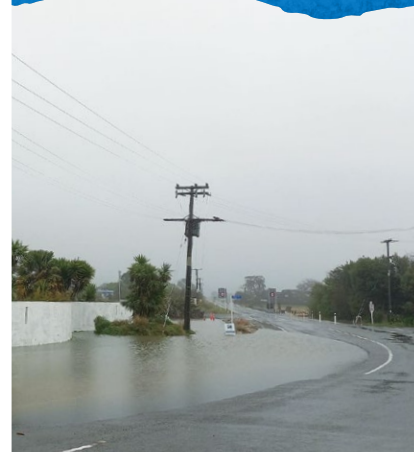
This phase of work involves the construction of two larger capacity culverts underneath Abel Tasman Drive. While this work's being done, the road is down to one lane and we ask for your patience and care when driving around the site.

This part of the project is expected to take about two months and is

being done by Sollys Contracting and Fulton Hogan.

The next phase, stage three, involves the construction of a clay bund wall or stop bank.

This will be no higher than 1.2m and will be grassed to eventually blend into the environment. CJ Industries is the contractor for the bund and this work is expected to start next month for five weeks.





# Meet Tasman's outstanding community contributors

Over the next few issues of Newline, we will introduce you to the deserving recipients of our 2022 Outstanding Community Service Awards, who have been officially recognised for their contributions to their community.

The first recipient we're featuring is Joan Reilly. There is probably not a person or animal in Golden Bay who doesn't know Joan. From the time she started her working life as a vet in the early 70s, her life in the Bay has centred around providing services for the community.

Joan's drive saw her moving from volunteering for St John as an Emergency Medical Technician to continuing her development and becoming a fully qualified paramedic – clearly, she's the ideal person to have in your show

jumping ring for four and two-legged competitors alike.

But her role in the community doesn't stop with the medical needs of humans and animals.

She is a justice of the peace, a committee member of Golden Bay Abbeyfield and a key member of the Golden Bay Civil Defence response team.

When there were no disasters, big or small, to deal with, Joan is a volunteer driver of people on the Wrinklies Bus and meals for Meals on Wheels.



Joan is also on multiple committees including Probus, Boy Scouts, the Golden Bay High School PTA, the Pony Club and the Gym Club.

... And she does all this as well as being a mother and farmer!

# Have your say on improving community connections and resilience

Tasman is a diverse and vibrant region – people of different ages, cultural backgrounds and from various walks of life enjoy the lifestyle in our District.

Many people are well-connected in their communities and make a difference by contributing their skills and talents to community life; however, others are isolated and don't participate as much as they could.

We know that connected communities are safer and more resilient – being part of something makes us thrive. So how can we become more resilient?

Our Welcoming Communities team wants your input in a special survey designed to improve inclusion and connectedness across our region. The online questionnaire is aimed at those who are new to the area and others who want to share their settlement experiences.

We would like to hear what works well and good examples of workplaces and communities that are welcoming and inclusive.

But we also want to hear about problems and where things can be improved, but more importantly,



we're interested in ideas and suggestions about how we can make our region more welcoming and inclusive.

The survey will take less than 10 minutes and we have 10 \$50 supermarket vouchers up for grabs – everyone who provides an email address goes in the draw to win. Just scan the QR code above or visit [shape.tasman.govt.nz](http://shape.tasman.govt.nz).

**If you would like more information or to speak to someone in person, please phone Birte Becker-Steel on 03 543 8400 or email [birte.becker-steel@tasman.govt.nz](mailto:birte.becker-steel@tasman.govt.nz).**



## Dob in a dodgy dumper

We're concerned about the amount of illegal rubbish being dumped in Tasman as it can have a serious impact on our environment.

This also costs the Council, and therefore all ratepayers money every time we need to clean up rubbish that has been dumped in Tasman. It adds up to tens of thousands of dollars each year.

Recently we've had examples of animal carcasses, mattresses, clothing, even bottles, cans and cardboard being abandoned on roadsides and riverbeds.

Many of the items we find littered or dumped are free to recycle at our Resource Recovery Centres. There's no excuse for dumping items like glass bottles, cans and cardboard; this behaviour shows a lack of respect for our community and our environment.

If we can identify the people dumping the rubbish, we can either recover costs from them, issue infringement fines or prosecute.

So, if you see anyone dumping rubbish illegally, please let us know. You can do this by giving us a call on 03 543 8400, or by using the Antenno app.

You don't need to intervene yourself, just a photo or licence plate number is normally enough for our compliance team to follow up.

---

**Let's work together to keep Tasman clean!**

---



**SUSTAINABLE  
STORIES**



## Save money and reduce waste by choosing alternatives to dumping

With the cost of rubbish disposal set to rise again in the middle of this year, we have put together a list of ways to help you save money.

The cost of disposal is set to increase from July, largely because of cost increases at our landfill. These increases are due to further investment at the landfill, an increase in the central government waste levy and the rising cost of greenhouse gas emissions.

The government waste disposal will be increasing from \$30 to \$50 per tonne – this levy funds waste minimisation work around the country (including in Tasman).

The investment at the landfill is to extend the site's life and reduce emissions.

All these changes mean the cost of prepaid rubbish bags and disposal

costs at Council Resource Recovery Centres will increase.

Search recycling options on our website [tasman.govt.nz](http://tasman.govt.nz) for dozens of tips and hints on alternatives to throwing our waste in the rubbish.

We also have a handy new 'Save Money and Reduce Waste' brochure available at our service centres and libraries that guides how you can save on your rubbish disposal costs.

It offers suggestions about how to recycle and reuse as well as options for free disposal of everything from left over paint and unwanted garden chemicals, to clothes, furniture, plastics, polystyrene and garden waste.





# Battling the baleage wrap littering our waterways

We have been made aware of an issue on our rivers, particularly along the Buller and Maruia, where baleage wrap is being found tangled in trees and along river berms after our high rainfall flood events. This plastic wrap is also making its way to our beaches and oceans.

This is not good for the environment and also reduces the appeal of some of our special spots. As well as this, it is a huge task to navigate the rivers and remove the wrap.

There's every chance that similar weather to what we experienced last August will bear down on us in the

future. So, we ask that farmers think carefully about where they store their baleage, their used wrap and where they position their rubbish pits.

Please store bales and the waste wrap after feeding out on high ground well away from flood-prone areas.

We also want people to keep an eye out for historic rubbish pits near waterways that may be prone to opening up during large flood events.

Baleage wrap recycling is available through Plasback Recycling, visit [plasback.co.nz](http://plasback.co.nz).



If you have any questions, reach out to [rural.info@tasman.govt.nz](mailto:rural.info@tasman.govt.nz).

## Local Government Reforms submission reminder

There are just a few days left to share your thoughts and ask questions on the future of local government.

The Review into the Future for Local Government has outlined a number of recommendations which, if implemented, could make a major difference to the way our system of local governance works in Aotearoa New Zealand.

This Review provides a significant 'once-in-a-generation' opportunity for us all to reimagine our future and

think about how local government should evolve over the next 30 years and beyond. Your submission will help to shape the final report which is due in June 2023.

To help the public understand and contribute to the process, a series of public webinars were held earlier in the month where the review panel presented their draft report and recommendations. The webinars highlighted what the reforms may mean for business, young people, the environment and accessibility.



You can make a submission by 28 February 2023 to help shape the final report and recommendations.

More information on the reform process and how to have your say can be found at [futureforlocalgovernment.govt.nz](http://futureforlocalgovernment.govt.nz).

## IS YOUR WATER SAFE?

Get the BEST from your water!  
Take the WORST out of it!

- Water Purification
- Filtration
- UV Sterilisers
- Giardia Filters
- Water Softening

WATER TESTING SERVICE AVAILABLE.

**thinkwater.**  
TASMAN BAY  
BEYOND IRRIGATION

401 HIGH STREET MOTUEKA.  
PHONE: 03 528 8888

The specialists in design, supply and installation of domestic & horticultural irrigation, drainage, effluent & septic systems, pumps, water harvesting & tanks and water treatment & filtration.

# Celebrate Children's Day with us

Children's Day/Te rā o ngā Tamariki celebrates children in Aotearoa New Zealand and is a national day of awareness held annually on the first Sunday in March.

It's a day for families to spend time with their children and to think about putting them first so they can thrive and fulfil their potential.

We are partnering with the Richmond Aquatic Centre for an afternoon of interactive games and activities as part of national Children's Day.

Enjoy the fun-filled pools for a gold coin entry or take part in outdoor activities the whole family can join, including bouncy castles, balloon twisting, music, and more.

Bring a picnic and enjoy some quality time with your children, showing them they are special, and making new memories.



## Sandbags in an emergency

During last year's emergency, there were questions about where people could get council sandbags to try and protect properties, however we don't have the resources to supply sandbags for private properties.

In a major storm, our maintenance crews and contractors focus on ensuring the function and safety of key infrastructure such as roads, stormwater, water and sewerage equipment.

This means residents and businesses need to handle their own sandbags in preparation for bad weather.

If your place regularly floods, you should take precautions to protect yourself as best you can.

Sandbags are not waterproof and are best used for directing water flow

rather than keeping property dry. They are useful for stopping water flowing under a garage door or diverting water downhill, but they don't protect against water coming from under a house and through floorboards.

Alternative solutions can be sheets of PVC which are a practical way to create a waterproof barrier around doors.

If you need sandbags, they can usually be bought from landscape, building and hardware suppliers.

Ideally, they should be kept dry and separate from sand or soil. Do not store sandbags pre-filled, because they will rot over time when stored filled with damp sand.

If possible, sandbags should be filled before a weather event

because it takes time and effort to fill and place them.

Full sandbags are very heavy so generally they only need to be half-full for easier and better placement where they should be stacked overlapping like bricks.

**But remember – if you are in danger or your property is under immediate threat during a storm, contact emergency services on 111.**



# G.J. Gardner. HOMES

VISIT OUR SHOWHOMES

86 & 88 Berryfield Drive, Richmond

Proud to be sponsoring:



CONTACT 03 543 9502 | 0800 42 45 46  
NELSON OFFICE 195 Queen Street, Richmond  
OPEN Monday to Friday, 8.00am – 5.00pm  
[www.gjgardner.co.nz](http://www.gjgardner.co.nz)





# NEWSLINE UPDATES



## Waimea Inlet Strategy feedback closes 10 March

You still have time to provide your feedback on a revised draft Waimea Inlet Management Strategy and Action Plan. The new draft Plan aims to improve the health of the Inlet and people's enjoyment of the Waimea Estuary, a very special part of our region. The current Strategy and Action Plan, along with annual reports on the group's progress, can be viewed on our website. Written feedback can be submitted until 10 March 2023 online at [tasman.govt.nz/feedback](https://tasman.govt.nz/feedback).

## Last call for arts funding applications!

Our Creative Communities Scheme has funding available for groups and individuals to run arts projects in Tasman, but get in quick as applications close on Friday 10 March. Creative Communities provides funding to support community involvement in the arts – whether it's music, theatre, festivals, mural painting, outdoor sculptures, art in public spaces, kapa haka, singing, art workshops or something else. For more information and to complete an application form visit [tasman.govt.nz/creative-communities](https://tasman.govt.nz/creative-communities).

## Service centre opening hours

Starting Wednesday 1 March, Motueka, Richmond and Tākaka Services Centres and AA counters will remain closed until 9.00 am on Wednesday mornings each week, to allow for all staff training and meetings. During this hour, our after-hours call centre will continue to take calls until 9.00 am, when the calls will switch back to our in-house team. We apologise for any inconvenience this may cause.

## Time to trim those trees

As we head into the shorter days of autumn, now is a good time for property owners to check that any vegetation on their land doesn't obscure clear sightlines. This keeps visibility high and makes roads and footpaths safer for pedestrians and traffic.

Property owners are responsible for clearing vegetation from their road frontage. Along footpaths, all vegetation should be trimmed so it's in line with a wall, fence, or the back of the path, and should also be cleared 2.5 metres over the footpath. Along roads, vegetation should be cut back to 0.5 metres from the edge of the roadway and 4.5 metres above the roadway.

## Maritime events

**Event activity:** Classic Boats

**Date and location:** Saturday 4 and Sunday 5 March 2023, Lake Rotoiti

**Event activity:** Power Boat Regatta

**Date and location:** Saturday 11 and Sunday 12 March 2023, Lake Rotoiti

The Harbourmaster has granted authorisation for these events under the provisions of the Navigation Safety Bylaw 2015. Further details and any new events may be viewed at [tasman.govt.nz/maritime-events](https://tasman.govt.nz/maritime-events).

## COUNCIL HUI



Meetings will take place in person and via Zoom. For details and the Zoom link visit [tasman.govt.nz/meetings-calendar](https://tasman.govt.nz/meetings-calendar). Unless otherwise stated, all meetings will be held at Council Chambers, 189 Queen Street, Richmond.

### Animal Control Subcommittee

Wednesday 8 March, 1.30 pm.  
No public forum.

### Strategy and Policy Committee

Thursday 9 March, 1.00 pm.

### Nelson Regional Sewerage Business Unit

Friday 10 March, 9.30 am. Nelson City Council, 110 Trafalgar Street.

**SURVEYING & RESOURCE MANAGEMENT**

- Project Management
- Resource Consents & Planning
- Subdivision Design & Management
- Land Development Engineering

**STAIG & SMITH<sup>LTD</sup>**  
ENHANCING THE LAND

81 Selwyn Place, Nelson • Ph 03 548 4422 • [www.staigsmith.co.nz](https://www.staigsmith.co.nz)

**ZOE BOND**  
SENIOR ASSOCIATE

Providing practical property, business, estate planning and trust advice

03 543 8301  
[zbond@fvm.co.nz](mailto:zbond@fvm.co.nz)

265a Queen Street, Richmond  
[www.fvm.co.nz](https://www.fvm.co.nz)

FLETCHER VAUTIER MOORE  
LAWYERS

# WHAT'S ON IN TASMAN



## Richmond to Moturoa / Rabbit Island Family Bike Ride

**Saturday 25 February, 10.00 am.**  
**Meet at Richmond Aquatic Centre.**  
**Free.**

This is a fun event open to all and is about celebrating and enjoying cycling. Come for an easy (but long) ride with your family and friends along Tasman's Great Taste Trail, improve your bike maintenance skills, tune up your bikes and continue celebrating at Moturoa/Rabbit Island with a sausage sizzle and games. Remember your bike helmet!

## Cops with Cakes

**Saturday 25 February, 10.00 am –  
1.00 pm, Saxton Field.**

This is a unique event, combining road and community safety information with family-friendly activities, including lots of fun for kids. All our local emergency services will be on-site, alongside many of Tasman and Nelson's community organisations, providing demonstrations, driver training, advice and support. It will be a great day out with the family; with free entertainment, rides, games, interactive displays, sausage sizzle and 'cop'cakes.

## Seniors Seated Exercise

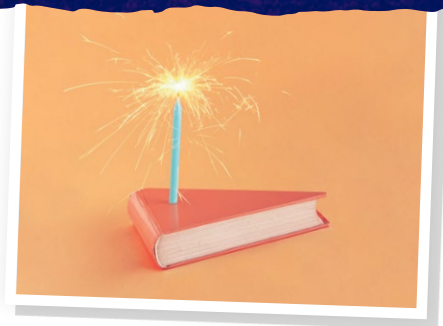
**Thursday 2 and Thursday 24 March,  
10.00 am – 11.00 am, Anzac Park,  
Richmond.**

Meet by the Age Concern Office, 62 Oxford Street, Richmond. For more information, visit [facebook.com/ageconcernnelsonstasman](https://facebook.com/ageconcernnelsonstasman), phone 03 544 7624 ext 5, or email [ageconnect@ageconcernnt.org.nz](mailto:ageconnect@ageconcernnt.org.nz).

## 2023 census help

The next census will be held on Tuesday 7 March 2023. Census is a nationwide survey that happens every five years to understand more about life in Aotearoa New Zealand. By taking part in the census, you help create a better understanding of your community.

From Tuesday 28 February – Tuesday 7 March, Tasman District Libraries is running help sessions to provide advice and support for completing your census. Anything from computer and internet access to help with understanding the questions. For more information about session times and dates, contact your local library or visit [tasmanlibraries.govt.nz](https://tasmanlibraries.govt.nz).



## Motueka Library's birthday

Te Noninga Kumu turns one in March. We will be celebrating with events and giveaways throughout March, starting on Wednesday 1 March with Booklover's Notebook take and makes and "Loving the Library" community wall. For more information about Motueka Library events, visit [tasmanlibraries.govt.nz](https://tasmanlibraries.govt.nz).

## Movie night: The Circus

**Monday 6 March, 6.30 pm,  
Richmond Library.**

Starring Charlie Chaplin and all his famous hijinks, in this 1928 classic, the Tramp finds himself at a circus where he is promptly chased around by the police who think he is a pickpocket. Running into the Big Top, he is an accidental sensation with his hilarious efforts to elude the police. Contact the Richmond Library to book your spot.



## Has your grease trap been emptied recently?

Keep your system healthy with an annual service.

Grease traps / Sumps / Septic tanks  
Waste oil / Hazardous waste

[nmwaste.co.nz](https://nmwaste.co.nz)

FREEPHONE 0800 725 326 / EMAIL [bookings@nmwaste.co.nz](mailto:bookings@nmwaste.co.nz)