



NEWSLINE

PĀNUI

5 AUGUST 2022
ISSUE 527

STAND
FOR TASMAN



It's time to finalise nominations and check the roll

Friday 12 August is a key date for this year's Council elections – nominations for those wanting to stand for Tasman close at noon.

To be eligible to stand for election you must be a New Zealand citizen, be enrolled on the parliamentary electoral roll and have lived at your current address for at least one month.

Remember you'll need two people to nominate you on the official nomination form. Then send the completed paperwork back to our electoral officer.

Those who nominate you must be over 18 years old and enrolled to vote in the area you wish to stand in. There's a \$200 (including GST) deposit, which may be refunded depending on how many votes you receive in the election.

When you submit your nomination forms, you can also supply a recent photograph of yourself and a 150-word profile statement. These will be published in a booklet and sent out with the voting papers. You will also have the opportunity to record a video of you presenting your statement for our website.

Pre-Election Report out now

The Pre-Election Report provides voters and candidates with information about the challenges and opportunities facing our Council and Tasman District. Check out the report at tasman.govt.nz/elections.

Enrol to vote

Did you receive a letter in the mail to check that your voter details are correct?

If you are registered to vote in Parliamentary elections, you are automatically enrolled as a residential elector to vote in local authority elections. The address where you are registered as a Parliamentary elector will be in the council district for the local authority elections.

If you didn't receive a letter, you may not be enrolled or your details may be wrong – you have until Friday 12 August to check them or you will have to make a special vote.

Visit vote.nz to enrol or update your details online. If you are not able to enrol online, you can enrol or update your details by calling 0800 36 76 56 to arrange for forms to be sent to you.

Art brightens Motueka alleyway

A Motueka alleyway that had become overgrown and unwelcoming has been given a facelift and a new lease of life thanks to the vision of two local artists and a group of willing youngsters.

The alley linking Wilkinson Street and McCarthy Crescent had fallen into a state of semi disrepair attracting taggers. That was until artists Dani Hedges and Melissa Linton got hold of it and revamped it into a community art space.

The pair worked with young people over several weeks to create 13 marine plywood art pieces for

one side of the alleyway, while on the other side Dani and Melissa painted a stunning mural depicting Papatūānuku – Earth Mother – and all she created.

Funding for the project was provided by one of our Creative Communities Grants and covered partial costs of workshops with the



young artists, materials and the mural installation.

By tidying up and brightening the area, the artists have created a lighter, brighter, safer space to encourage the community, particularly families with children, to use as a link to town.



Tasman, it's time to roll out the welcome mat

Next month we will be celebrating community diversity by inviting newcomers to join activities during Welcoming Week.

The idea is to get to know your neighbours down the road, your new colleagues and others that have moved to the area recently.

Tasman is a real melting pot of ethnicities with at the latest count, people from more than 100 different ethnic backgrounds choosing to make our region their home.

Welcoming Week runs from 9 – 18 September, during which people will

be encouraged to get together with others in a variety of ways.

You could run open days at your business or guided tours of interesting places in your neighbourhood that newcomers may not be aware of. How about a games evening, neighbourhood picnic or street party, or that old-time favourite, a potluck meal with food from around the world?

Our Welcoming Communities Officer Birte Becker-Steel can help with ideas and themes for events and provide you with a kitset to hold a 'DiversiTea Party'. Contact her at Birte.Becker-Steel@tasman.govt.nz.

By hosting a Welcoming Week event, you become part of a growing movement of people across the world who recognise that building inclusive communities makes us stronger.



WELCOMING WEEK
TE WIKI O MANAAKI



Kids dig the experience of big machines

Let's face it, who hasn't driven past a construction site, seen the machinery and thought, "I'd love to have a go on one of those diggers?"

That's exactly the opportunity a group of lucky Richmond preschoolers got a couple of weeks ago.

Tasman Alliance partner Downer NZ is building a new pedestrian crossing on the road near Champion Kids Early Childhood Education Centre on Champion Road in Richmond.

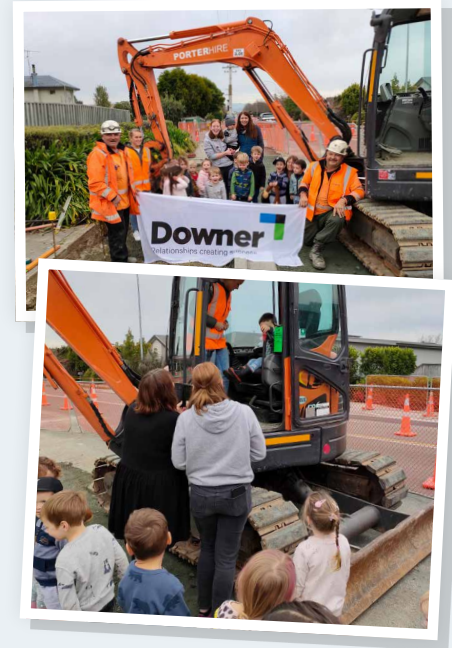
The young people from the centre have been very interested in the

activity going on in their street during the construction period, so a special site visit was arranged.

The visit included a kids safety briefing, learning about the job and what the machinery does, and then the children shared stories about their parents operating machinery.

Then it was time for a supervised pretend – machine's power isolated – operation of the machinery.

The new crossing near the Daelyn Drive intersection will make a great addition to the footpath network providing safer off-road travel.



Tasman's submission to the Water Services Entities Bill

We have taken a long-term view of the proposed Three Waters reforms in our submission to the Water Services Entities Bill.

While we recognise the need for reforms, the structure needs further work to provide trust and confidence in the outcomes being sought by the Government.

The current proposal of four large entities from 67 Councils poses its own challenges. As well as the

complexity of joining so many systems together under one management system, the fact that the majority of the other Councils in Entity C are in the North Island creates a greater risk of Tasman's needs being lessened in the shadow of larger populated areas.

Should the reforms proceed, we have submitted, with the support of Nelson City and Marlborough District Councils and iwi of Te Taihū, to be part of the South Island Entity D with whom we share geography



and our rural identity and have a greater chance of sharing the proposed benefits of the structure.

There are a number of other technical suggestions in our submission about expectation setting, reporting and billing.

To read our submission visit tasman.govt.nz/three-waters.

**THINK
PLAN DO**
Engineers / Surveyors / Planners

Land Surveying / Resource Management
Environmental Science / Geotechnical Engineering
Civil and Structural Engineering

0800 999 333
nelson@do.nz
www.do.nz

Level 1, 42 Oxford Street
Richmond 7020

do DAVIS OGILVIE
ENGINEERS / SURVEYORS / PLANNERS

Subsidised pest traps now available across the District – and cheaper

The wait is over! Our new subsidised pest traps are coming to a service centre near you.

If you are keen to carry out pest animal control on your property, you can purchase a subsidised pest trap through our backyard trapping programme.

We received a great deal on the construction of the new trap boxes, so we are pleased to announce a drop in pricing for the DOC200 and Trapinator traps for Tasman residents. Available traps and new pricing are as follows:

- Victor snap trap in a wooden tunnel for rats: \$15 (no change).
- Trapinator traps for possums: \$20 (\$10 cheaper).
- DOC200 trap in a wooden box for stoats, weasels and rats: \$50 (\$10 cheaper).

These updated prices only apply to Tasman District Council traps bought in Tasman District or Nelson City. Nelson City Council also sell traps which may be priced differently.

Our subsidised traps can now be purchased by Tasman residents at the following locations:

- Nelson DOC Visitors Centre – Millers Acre Carpark
- Richmond Service Centre – 189 Queen Street
- Motueka Service Centre – 7 Hickmott Place
- Tākaka Service Centre – 78 Commercial Street

To ensure these traps are available for all Tasman residents, there is a limit of one of each trap type per property.



These traps will provide their owners with many years of service.

We would like to thank the great team at the Waimea Menzshed for building the trap boxes for us.

For more information or to purchase a trap, get in touch with one of our service centres.

Reduce the smoke haze – tips for clean burning

During winter, wood smoke from home heating and outdoor burning causes many problems. Calm, clear days with cold temperatures do not allow the smoke to rise and disperse; instead, it sits low to the ground under a temperature inversion layer. Smoke, odour and particulate (ash) from fires can be bad for your health, as well as being a nuisance for others.

Applying good practices when you burn can significantly reduce the amount of smoke produced and ensure more efficient burning. Remember to never burn treated or painted timber as this exposes you and the environment to dangerous chemicals. See our home heating and outdoor burning best practice guides at tasman.govt.nz/good-wood.

Outdoor burning

Outdoor burns are banned year-round in Richmond and Motueka townships. Other townships and the outskirts of Richmond and Motueka are zoned 'fire sensitive' which bans outdoor burns from 1 June – 1 September (unless burning diseased horticultural crops). You can check the boundaries on our planning maps (discharges section) on our website.

Where outdoor burning is allowed, you need to do everything you can to minimise smoke:

- Check the weather conditions, wind speed and direction and continue to check throughout the burn.
- Wind speeds of 10 – 25km/hr are ideal.

- Burn well-seasoned, dry vegetation only.
- Stack vegetation and untreated wood loosely. Do not compact the material.
- In winter, only burn from 10.00 am – 4.00 pm, don't add anything after 3.00 pm. Don't leave a fire to smoulder overnight – restart it the next day.
- Get the fire burning hot as quickly as possible and keep it hot throughout the burn – lower temperatures mean more smouldering and smoke.

Don't forget to check if you need a permit from Fire and Emergency NZ – visit checkitsalright.nz.

Electronic waste recycling is now even easier

Your used electronic devices contain valuable and scarce resources that can be reused rather than dumped in a landfill.

In the past year, Nelson and Tasman residents have diverted 40 tonnes of electronic waste from landfill by taking it to the Nelson Environment Centre and Weka Peckers Recycling where they've either been repaired and reused or broken down and recycled.

We have previously supported e-waste recycling with a \$20 subsidy. But this year, instead of paying individual subsidies, we are supporting each organisation directly which means you should see a reduction in the price for dropping off common e-waste items.

There's a charge for recycling e-waste because it takes time and resources to repair or break down and recycle items, all of which comes with a cost. However, with landfill

levies going up, there is more reason than ever to find alternatives.

Some electronic items can be recycled free of charge through specially designed schemes, and we expect more options to become available through national product stewardship in the coming years.

Next time you're wondering what to do with that old cell phone, blender or television, check out one of these options:

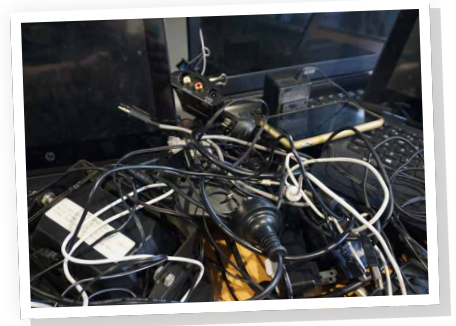
Free cell phone recycling with Re:Mobile is available at Vodafone Motueka and Richmond, Resene Colorshop Richmond, Noel Leeming Richmond and Spark Richmond.

Used laptops can be donated through Recycle a Device (RAD). RAD teaches high school students how to refurbish

donated laptops and then gets these devices into the hands of others who need them. Visit recycleadevice.nz for more information.

Some electronic equipment can be recycled for free through TechCollect at Noel Leeming Nelson. Visit techcollect.nz for details.

For all other electronic waste, visit the Nelson Environment Centre, 6 Vivian Place in Annesbrook or Weka Peckers Recycling, 97 Robinson Road, Lower Moutere.



Pest weeds take advantage of the warmer seasons

Our Biosecurity Team is noticing changing behaviours with some of our target pest plants across Tasman, due to a milder than usual winter. Some plants are flowering much earlier than usual, while others that are generally deciduous haven't lost their leaves at all.

Variegated thistle



Variegated thistle is one annual plant which can become a serious prickly pasture pest. It usually germinates in September, grows rapidly and produces many fluffy seeds. In 2021, Biosecurity Officers discovered mature, flowering thistles in July, an absolute first. This was discovered again this year, and due to its rapid growth, site checks may be needed several times to ensure both early and late plants are caught before they drop seed.

The inconspicuous Climbing Spindleberry vine is only identifiable during a brief window when its leaves turn a distinctive yellow just before they drop. This year, Biosecurity Officers visited known sites in May, only to find very few of the vines had turned. They have since revisited sites and are now finding plants with yellow leaves

attached that should be well past the leaf-dropping phase.

Taiwan cherry is only distinguishable from other prunus species when in flower, due to its unmistakable raspberry-coloured, bell-shaped blossoms. The Biosecurity Team usually carries out annual Taiwan cherry surveillance in August/September, but this year, the first Taiwan cherry was spotted flowering in early June. Thankfully, early flowering is more help than hindrance.

Old man's beard is a deciduous vine which usually drops its leaves as soon as winter arrives. However, the team is still seeing many of these plants either in full leaf or just starting to yellow off. If this continues, smothered trees that usually gain a small reprieve from old man's beard during the winter will be further affected.

Engaging future leaders in FutureFit

The Waimea College Enviro Group was excited to engage with the FutureFit tool recently.

FutureFit is a free programme that shows how all individual actions add up to make a collective difference to our emissions. It's the small things that add up to make a big difference.

The Waimea Enviro team saw the benefits of measuring their carbon footprint, cross-pollinating with the values and kaupapa of the Enviroschools programme which are sustainability and school community engagement outcomes.

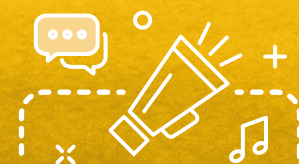
The most popular carbon-reducing actions selected by the leaders were

to plant native trees, bike to school and have meat-free days at home.

There was much enthusiasm to take ownership of their actions to create positive change in the Tasman community by reducing their carbon emissions.

The Enviro leaders were encouraged to share what they thought were easy actions to inspire their families to implement in their daily lives, such as shorter showers and driving less where possible.


But the young environmentalists went one step further by also creating an awareness campaign and incentive challenge to engage other students at Waimea College to sign up to FutureFit.



YOUTH YARNS



You can sign up to FutureFit and measure your carbon footprint at futurefit.nz.



TRANSPORT TALES



Motupipi bridge work begins

Work is about to begin on the new shared pathway bridge over the Motupipi River in Golden Bay.

Site works on the bridge, which is to be named after community cycling and walking advocate Christine Pullar, start next week.

The prefabricated structure will be mounted on piles on the seaward side of the road bridge, near the intersection of Abel Tasman Drive and Burnside Road.

Currently, cyclists and pedestrians on the popular Tākaka to Pōhara shared path must share the narrow Motupipi Road bridge with other traffic, raising safety concerns for all users.

The project has a price tag of just under \$400,000 and is expected to be finished in time for the summer visitor season.



NELSON
MARLBOROUGH
WASTE

Vacuum trucks love winter All weather - waste liquid solutions

Leading liquid waste contractor in
Nelson, Marlborough & Tasman

nmwaste.co.nz

FREEPHONE 0800 725 326 | EMAIL bookings@nmwaste.co.nz

NEWSLINE UPDATES



KEEPING YOU INFORMED ABOUT NEWS AND EVENTS IN THE TASMAN DISTRICT • 5 AUGUST 2022

Leadership grants for Tasman youth

Did you know we offer grants of up to \$500 for Tasman youth to participate in youth leadership opportunities?

This can be used for activities such as The Spirit of New Zealand, Outward Bound, Festival for the Future, Whenua Iti Outdoors and other experiences, conferences and workshops.

The grant is provided to support the personal development of young people living in Tasman. Applications are accepted all year round.

Don't miss the chance to enjoy a potentially life-changing opportunity. Get all the details and apply now at tasman.govt.nz/grants.

Tasman Resource Management Plan update

The decision on Plan Change 73 – Omnibus 2 Amendments is now released and the Tasman Resource Management Plan has been updated to reflect this. All information can be found at tasman.govt.nz under My Council / News and Notices.

Sign up to get Newsline via email

If you prefer to read your news online, you can sign up to receive a copy of Newsline straight to your inbox. Visit tasman.govt.nz/newsline and follow the link to join the mailing list.

Be in the know with Antenno

We're using a free mobile app called Antenno to send you alerts and notifications about places and topics you care about, like reminders about recycling or road closures. You can also use the app to engage with us easier and get involved in your community by reporting issues and providing feedback. Antenno is simple and easy to use, and no personal information or log on details are required. Download it for free from the app store on your phone.

COUNCIL HUI



At Orange, meetings will take place in person and via Zoom. Public forum presenters can speak in person if they wear a mask, follow one-metre distancing, and attend one at a time. Visit tasman.govt.nz/meetings-calendar for details and the Zoom link.

Joint Shareholders Committee

Friday 5 August, 2.00 pm. No public forum

Golden Bay Community Board

Tuesday 9 August, 9.30 am

Full Council

Thursday 11 August, 9.30 am

Enterprise Committee

Tuesday 16 August, 10.00 am. No public forum

Motueka Community Board

Tuesday 16 August, 4.00 pm

Strategy and Policy Committee

Thursday 18 August, 9.30 am

**Think ahead
for peace of mind**

No matter what your age, the best time to plan is now. Pre-planning and pre-payment leaves nothing to chance and gives you and your family one less thing to worry about.

Phone us today for a FREE INFORMATION PACK on Pre-planning

PH 544 4400
24 Champion Road,
Richmond | wrfs.co.nz

**Waimea
Richmond**
FUNERAL SERVICES

G.J. Gardner. HOMES

VISIT OUR NEW SHOWHOMES

86 & 88 Berryfield Drive, Richmond

Proud to be sponsoring:

CONTACT 03 543 9502 | 0800 42 45 46
NELSON OFFICE 195 Queen Street, Richmond
OPEN Monday to Friday, 8.00am – 5.00pm
www.gjgardner.co.nz

WHAT'S ON IN TASMAN



Community planting days

Sunday 7 August, 9.00 am – 1.00 pm, Moturoa / Rabbit Island, Boat Ramp Bay Peninsula. Access from the end of Boat Ramp Road, on the right after 98 Ken Beck Drive.

Sunday 14 August, 9.00 am – 1.00 pm, Estuary Place, Richmond. Access from Lower Queen Street or the cycleway.

Join the Battle for the Banded Rail in their community planting efforts. Everyone is invited! Please bring gloves, a spade if you have one and drinking water. Wear solid footwear and clothes suitable for the weather conditions. Morning tea is provided. For more information, email Kathryn at bandedrail@gmail.com.

Sunday 14 August, 9.30 am – 12.30 pm, Moturoa / Rabbit Island.

Whenua Iti Outdoors and Tasman District Council with the support of Forest & Bird Youth are running a fun planting event for tamariki and their whānau. As well as planting trees to help restore an area of the Waimeha / Waimea Inlet, Whenua Iti Outdoors instructors will be there to support young people in learning about the trees and birds and to run some fun games and activities. Morning tea will be provided. There are spot prizes to be won too! Spaces are limited, please register by Wednesday 10 August: whenuaiti.org.nz/community-planting-day

Saturday 13 August, 10.00 am, Clarke Valley Road and Sunday 14 August, 10.30 am, Shaggery.

The Motueka Catchment Collective is planting 5,000 trees across the catchment to celebrate the Queen's Platinum Jubilee. All welcome. Come prepared for planting and bring your own spade. Pre-register so you can

be provided with more information including the physical address and be contacted if there are any changes: surveymonkey.com/r/K9V6BH6.

Te Awhi Rito exhibition

Now until 31 October, Golden Bay Museum Te Waka Huia o Mohua.

Come and see the new exhibition *Te Awhi Rito*, the history of a contemporary raranga (weaving) rōpū (group) of Māori and non-Māori, who are based at Onetahua Marae, Mohua, Golden Bay. The museum is open Monday to Friday 10.00 am – 4.00 pm and Saturday until 2.00 pm. Entry by koha/donation.

Wellby Talking Café

Tuesday 9 August, 1.30 pm – 3.00 pm, Richmond Library.

Everyone is welcome for a relaxed cuppa to start your journey connecting with others who enjoy the same things. You can pop in for a quick chat or stay for a longer conversation with friendly people. No need to register, just turn up on the day. The hosts will warmly welcome you when you arrive.

Winter chill-out concert

Thursday 11 August, 5.00 pm – 6.00 pm, Sundial Square, Richmond.

Come and chill out after a long day at work to upbeat music and fun games for the kids. This will be cancelled if wet. Free.

Second Hand Sunday

Sunday 14 August, 9.00 am – 2.00 pm.

Second Hand Sunday is a fun way for Nelson and Tasman residents to declutter and re-home unwanted household goods for free. If you have items you want to give away, simply register online before 10.00 am

Friday 12 August to be included on the list of participating addresses. Print off a poster to put on your mailbox and put your items on your driveway at 9.00 am on the day.

A list and map of participating addresses will be available to download from 12.00 pm Friday 12 August. Check out the map to plan your fossicking route and pick up some free second-hand items! The event will take place rain or shine.

For more information and to sign up, go to tasman.govt.nz/shs.

Hoopla

If you're looking for a new way to read books online, listen to audio books, watch movies and discover new TV series – for free – we have a great new resource that you'll love. Download Hoopla from your app store, create an account using your Tasman District Libraries library card number and PIN, and start exploring! If you need a hand, give your local library a call and we'll help you out.

WordFest

Take a deep dive into the wonderful world of words at Tākaka Library throughout August. We have games, a spelling bee, a life story writing workshop, a local history publishing talk and more for wordy types of all ages. Visit tasmanlibraries.govt.nz for more information.

Let's get digital

Make the most of your phone, tablet, computer or other digital device at Richmond Library's free computer workshops. Learn how to create a photo book, take and share photographs, be safe online, stream TV series and films for free and more. Visit tasmanlibraries.govt.nz for more information.