

NEWSLINE

PĀNUI

26 NOVEMBER 2021
ISSUE 510



We're taking a fresh view on walking and cycling

We've assessed how people get around the urban areas of Tasman and created a new draft Walking and Cycling Strategy.

Although it's a walking and cycling strategy, it actually refers to all micro mobility devices designed for use on footpaths and cycleways.

This project has been in development since 2018 when we identified a need to improve walking and cycling within our communities.

It's a big picture exercise with targets set out as far as 2050, but it also has a community focus, improving neighbourhood streets.

Most significant is the creation of a comprehensive network of connected cycleways and paths across all urban areas, as well as improved pedestrian crossings.

We realise that not everyone will be able to change their commuting and short journey habits overnight, but with a safer environment people will have better options about the way they travel.

There are plans for all residential and town centre areas of Tasman.

The draft strategy includes creating 30km/h residential neighbourhood greenways and town centre commercial areas, much like Richmond's Queen Street, which

are safe enough for cyclists and pedestrians of all ages and abilities to use as part of the wider walking and cycling network. This could mean a redesign of some streets and parking around the District.

Funding has been allocated through the 10-Year Plan 2021 – 2031 with contributions for some aspects of the strategy coming from Waka Kotahi NZ Transport Agency.

Official consultation is open until 7 March 2022 with several pop-up community information events also planned in February.

The draft Walking and Cycling Strategy is available on our website, tasman.govt.nz/feedback.

MEET YOUR REPRESENTATIVES

Kia ora Tasman! It's been a busy year and I'm pleased the Council has finally progressed its draft walking and cycling strategy which is now out for public consultation. We have taken a long hard look at how people get around Tasman, and the result is an awesome new strategy that has something in it for everyone!



We all know Richmond has a traffic congestion problem, but let's remember that by encouraging more people to walk and cycle, we free up roads for those that need to drive from rural areas or because of mobility issues.

Walking and cycling is also a significant step forward in enabling us to meet our greenhouse gas emissions reduction targets. A shift to active transport could save as much as a quarter of

personal carbon dioxide (CO₂) emissions from transport.

Even just shifting from driving the car once a week and choosing to walk or cycle can make a difference. For those of you who may lose car parks in your street because of our new strategy, I want you to reflect that these are public spaces, and our data shows that most houses have off-street parking for up to three cars (including garages). Our new strategy says that in some instances

it is justified to claim back this public space to make a cycleway so our kids can safely cycle to school.

Everything in life is a trade off and balance. I hope that submissions carefully consider this trade off and strategy as an important step forward on many fronts for Tasman to reduce congestion, mitigate greenhouse gas emissions, and create a safer environment for our kids.

Councillor Dana Wensley
Richmond Ward

Our urban growth measured

Results of the eighth joint Nelson Tasman Annual Monitoring Report have provided an overview of housing and business development trends for the Nelson Tasman urban environment.



The Nelson City and Tasman District Councils are jointly responsible for the monitoring requirements under the National Policy Statement on Urban Development (NPS-UD), as well as preparing a Future Development Strategy and annual Housing and Business Capacity Assessments.

The Nelson Tasman urban environment comprises 85,400 residents in Nelson, Richmond, Hope, Motueka, Māpua, Wakefield, Brightwater, Cable Bay and Hira. Of that, 32,900 (38 percent) live in Tasman.

Among the findings for the year ending June 2021, both regions have mirrored national population

growth trends, with higher growth rates since 2015 compared with the previous ten years.

Growth over the last year in Tasman has been higher than expected, particularly in Richmond, Brightwater and Māpua.

However, in Motueka and Wakefield growth has been lower than expected.

Growth with building consents was 20 percent higher than the previous year across the urban environment, due to a higher number (718) of dwellings consented in Tasman.

In 2020/2021, there were 588 new subdivision lots granted resource

consent in Tasman, with 530 in the urban environment.

There were 348 new residential sections created in Tasman (332 in the urban environment), slightly more than last year.

Of the 467 new dwellings in Tasman's urban environment granted building consent in 2020/2021, 89 percent were in previously undeveloped (greenfield) areas, mostly in Richmond West.

Monitoring reports are available annually, with these growth indicators useful for reviewing the timing of infrastructure projects in the Annual and 10-Year Plan.

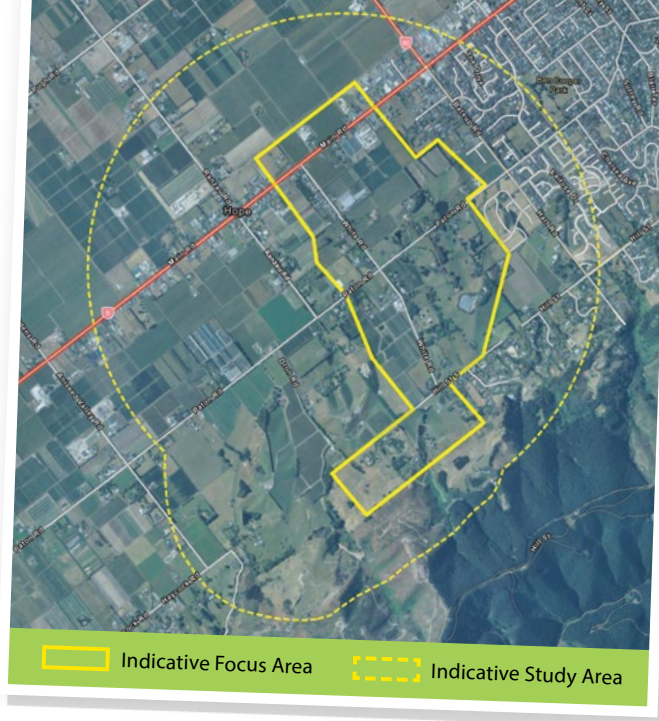
Share your thoughts on how Richmond South should grow

A body of council planning work, including the Nelson Tasman Future Development Strategy and our 10-Year Plan, has identified that as well as intensification in Richmond, there is a need for greenfield development so that there are enough houses for our growing population.

The recently launched 'Reimagining Richmond South' project aims to help meet growing housing demand by providing for around 2,000 new homes within the next 20 years in the area south of Richmond towards Hope.

It's early days for this project. We want to learn your views and work with landowners, businesses, and our communities to explore the future of the Richmond South growth area. To do this, we've been running drop-in information sessions at the Hope Hall. If you couldn't make those events, we would like to get your feedback via our website before 6 December 2021.

What we learn through this first stage of the project will help us to plan community and landowner visioning sessions. We hope to run these in March next year. The community vision for the area will be the foundation for detailed structure planning work.



The structure plan will guide how Richmond South should develop, covering things like housing design and density, business areas, sustainable infrastructure requirements, how people will get around, where's best for reserves and spaces for people to come together, and how we look after the environment and heritage.

Local communities have an important role in shaping this structure plan and ultimately making Richmond South a place where more people can live, work and spend time.

[Visit **environmentplan.tasman.govt.nz/reimagining-richmond-south**.](https://environmentplan.tasman.govt.nz/reimagining-richmond-south)

Champion link road takes a victory lap at opening

There is now improved access to the Velodrome and Saxton Field from Champion Road, thanks to a new link road and car parking facilities.

The project was divided into two stages, with work done initially to connect Champion Road to the Velodrome in 2019, before linking the Velodrome to Saxton Field. The project was completed in April this year, on time and on budget.

The carpark was specially designed to cater for cycling events and speed skating, with a criterion course within the roadway now complementing the velodrome facility.

A mid-point lockable gate was also installed to improve safety day to day

and prevent shortcutting with the link able to be opened for large events.

Being in the middle of a busy recreational area, this road is primarily designed to provide local access to the velodrome and adjacent facilities, and is not an alternative route between Richmond and Stoke.

Saxton Field Committee chair Derek Shaw cut the ribbon at the opening, attended by Nelson City and Tasman District Councillors and staff as well as representatives from key project partners.

Derek said the new road and car park transcended being a thoroughfare, but also makes the Velodrome and other facilities of Saxton Field more accessible while increasing the opportunities for greater use.





SUSTAINABLE TASMAN

Waterways clear for fish passage restoration project

The way is clear to begin work on our fish passage project to improve fish diversity and abundance throughout the District.

The programme is worth \$2 million and is co-funded by the Ministry for the Environment and Tasman District Council as part of our wider Freshwater Improvement Fund partnership.

Work will start in Tōtaranui and Pōhara this summer and then continue throughout Golden Bay.

Over the five-year project duration, 4,350 in-stream structures will be assessed, with 1,566 remediations

expected to occur.

At the same time, this project is adding local jobs and growing skill sets.

With the help and support of iwi and landowners, our teams will assess in-stream structures and carry out simple, quick remediations that will significantly improve fish passage.

Through iwi-led education events and Mātauranga Māori monitoring, this project also intends to improve local freshwater knowledge and foster kaitiakitanga.

For the fish, the work means they'll be able to get home, have increased

habitat access and ability to migrate as well as greater connection within catchments.

Our freshwater fish species are in trouble, 11 of the 20 species in Tasman are classified as 'in decline'. Several bird species that mainly eat freshwater fish are also threatened.

Stream structures such as culverts, dams and weirs often block fish migration and impact stream health.

Around 75 percent of these fish species are migratory and require uninterrupted passage to access their "homes".

Climate Action Plan makes progress

In 2019 we adopted our Tasman Climate Action Plan which has three focus areas: mitigation, adaptation and leadership. It lists four overarching goals relating to each of the focus areas:

1. How we contribute to New Zealand's efforts to reduce greenhouse gas emissions.
2. That we become more resilient to the impacts of climate change.
3. That our community is informed of climate change actions and options for response.
4. That we show clear leadership on climate change issues.

Here's a snapshot of our work and achievements over the past 12 months.



| OUR COMMUNITY | OUR ENVIRONMENT | OUR BUILDINGS AND ASSETS | PLANNING FOR OUR SPACE |
|---------------------------------------------------------------------------------------------------------------------------------------------------------------------------------------------------------------------------|---------------------------------------------------------------------------------------------------------------------------------------------------------------------------------------------------------------------------------------------------------------------------------------------|-----------------------------------------------------------------------------------------------------------------------------------------------------------------------------------------|-----------------------------------------------------------------------------------------------------------------------------------------------------------------------------------------------------------------------------------------------------------------------------------------------------------------------------------------------------------------|
| <p>Development of the Wakefield School Active Travel Plan 2020/2021</p> <p>Over 70 residents have used our compost and electronic waste subsidy</p> <p>We have helped retrofit over 200 Tasman houses with insulation</p> | <p>Over 85,000 plantings around Tasman, including Mārahau, Motupipi River, and Murchison's Riverview Reserve</p> <p>Monitoring and taking action to better manage pest species, thereby helping our ecosystems to thrive</p> <p>Developing planting plans for the Kingsland Forest Park</p> | <p>Solar panel installation at new Motueka Library</p> <p>Improved energy efficiencies at the Brightwater Water Treatment Plant</p> <p>Council fleet contains seven hybrid vehicles</p> | <p>The Nelson Tasman Future Development Strategy review and the Tasman Environment Plan development will help us better incorporate environmental considerations in our future</p> <p>Started designing for the inclusion of Motueka/Māpua and Wakefield/Brightwater to our public transport network</p> <p>Development of our Walking and Cycling Strategy</p> |

Pick up a Christmas bargain or lend a hand at an op shop

With the festive season rapidly approaching, now is the perfect time to think about creative ways of gift giving that reduces waste and supports our communities.

Op shops are wonderful places to find unique items for a decent price, all while supporting a worthy community cause and reducing waste.

We have an awesome range of op shops and second-hand clothing stores across Tasman District. There are so many to check out that we've created a map so you can easily find the shops closest to you. You can download our Op Shop Map on the Rethink Waste page of our website or pick up a printed copy from one of our service centres.

The fashion industry is responsible for 10 percent of annual global carbon emissions – that's more

than all international flights and maritime shipping combined! By supporting op shops you're reducing the quantity of textile waste going to landfill, reducing your carbon footprint, and making a positive contribution to local charities doing wonderful work in our communities. It's a win-win solution!

However, many of our op shops are in real need of volunteers now, so if you have a bit of time on your hands, why not give your local shop a call and see if you can help? You'll find contact numbers for Tasman op shops in our Op Shop Map.

[Visit tasman.govt.nz/rethink-waste](https://tasman.govt.nz/rethink-waste)



COLLABORATION
Staff and Councillor involvement with the Nelson Tasman Climate Forum
Working with iwi, NCC etc on the Intergenerational Te Taihu Strategy
Working with Youth Councils to encourage better engagement with young persons

OUR URBAN SPACE
Shared paths and cycleways in Richmond and Māpua
Neighbourhood greenway trials in Richmond

ADAPTATION
The Coastal Risk Assessment Report identifies vulnerabilities to Tasman property and infrastructure
We started engagement with our community on options (accommodate, protect, avoid, and retreat) around coastal management

FLETCHER VAUTIER MOORE
LAWYERS

Providing legal advice on property and business matters.

Zoe Bond
Associate

zbond@fvm.co.nz
265A Queen Street, Richmond
Phone (03) 543 8301

SURVEYING & RESOURCE MANAGEMENT

- Project Management
- Resource Consents & Planning
- Subdivision Design & Management
- Land Development Engineering

STAIG & SMITH LTD
ENHANCING THE LAND

81 Selwyn Place, Nelson • Ph 03 548 4422 • www.staigsmith.co.nz

Motueka Top 10 Holiday Park grows

Motueka's Top 10 Holiday Park is expanding with the purchase of an adjacent property.

The land the camping ground is sited on in Fearon Street is a Council Reserve and leased to the owners of the Holiday Park.

The Park has grown in popularity over recent years. Its proximity to all the amenities of central Motueka and at the gateway to the Abel Tasman National Park means demand for campsites and accommodation is steadily increasing.

When the adjacent property at 28 Fearon Street became available we purchased it, with the \$1.2 million cost funded by profits from our forestry operations.

Property and Enterprise Manager Nick Chin says the existing house on the nearly one-hectare block is currently being rented out and work is underway to tidy up the site, including trimming trees in time for the summer visitor season.

A resource consent application is being processed to alter the zoning to allow the site to be used as a



camp. In the meantime, the area will be used for overflow parking for camper's vehicles and boat trailers.

Nick hopes the Holiday Park expansion will go a small way to assist with the dire short term accommodation shortage in Motueka, particularly during the horticultural harvest season.

Crescent Street neighbourhood greenway consultation continues in Richmond

Neighbourhood greenways are streets where vehicle numbers and speeds are reduced to create a safer, more pleasant environment for everyone.

After an initial meeting with the residents, we drafted plans and posted them to the residents for feedback. Unfortunately, due to Covid-19 Alert Level Two restrictions, we were not able to host a community discussion, however we have been receiving feedback via email, phone and one-on-one meetings.

The feedback has been mixed. There are suggestions that some residents would like to see greater parking restrictions, particularly

at intersections or blind crests. However, others do not want to see parking removed.

Residents also suggested cutting back vegetation that blocks sightlines at intersections for drivers and pedestrians.

The other issue we received conflicting feedback about was speed tables. Some people are keen to have more installed while other people are opposed to the idea.

We want to thank everyone who has already provided feedback about the proposed neighbourhood greenway plans and encourage others to submit feedback before 15 December.

The draft plans are on our website, tasman.govt.nz, search 'Crescent Street Greenway'.

To provide feedback, call us on 03 543 8400 and ask to speak to Mike van Enter or email mike.vanenter@tasman.govt.nz.

IS YOUR WATER SAFE?
Get the BEST from your water!
Take the WORST out of it!

- Water Purification
- Filtration
- UV Sterilisers
- Giardia Filters
- Water Softening

WATER TESTING SERVICE AVAILABLE.

thinkwater.
TASMAN BAY
BEYOND IRRIGATION

401 HIGH STREET MOTUEKA
PHONE: 03 528 8888

The specialists in design, supply and installation of domestic & horticultural irrigation, drainage, effluent & septic systems, pumps, water harvesting & tanks and water treatment & filtration.

NEWSLINE UPDATES



KEEPING YOU INFORMED ABOUT NEWS AND EVENTS IN THE TASMAN DISTRICT • 26 NOVEMBER 2021

Time is running out to talk to us about Easter trading in Golden Bay

The Golden Bay Community Board is proposing that we introduce a policy enabling shops in Golden Bay to have the choice of whether or not to trade on Easter Sunday. If adopted, it is anticipated that it will be in place in time for Easter 2022. Submissions are open until next Sunday, 5 December 2021. Pick up a copy of the draft Easter Sunday Trading Policy at one of our service centres or libraries, or view it on our website, tasman.govt.nz/feedback.

Meadows Crossing opens

A crowd of more than 100 people turned out on a grey Saturday morning earlier this month for the official opening of the \$1.9 million Meadows Crossing. Andrew Spittal from The Meadows, Tasman Mayor Tim King and Rachel Boyack Nelson MP all gave speeches celebrating the successful collaboration between Richmond West Development Company Ltd and Tasman District Council which has enabled the construction of the bridge and shared path to link the wider Richmond West community. The original plan was to construct a splash or ford type roadway through Borck Creek that water would run across during times of heavy rain. However, the private company that owns The Meadows development worked together with the Council to find a way of getting a bridge built instead.

Flush your taps, check your roof

Some plumbing fittings have the potential to allow minute traces of metals to accumulate in water standing in the fittings for several hours. Although the health risk is small, the Ministry of Health recommends that you flush a mugful of water from your drinking-water tap each morning before use to remove any metals that may have dissolved from the plumbing fittings. We recommend this simple precaution for all households, including those on public and private water supplies.

Everybody should try to save water whenever they can so you could collect the small amount you flush from the taps and use it for something else like watering plants (but not the veggie garden).

If you have a rainwater supply, flushing taps won't help. You need to check your roof and guttering for materials that may contain metals that could contaminate the water: lead flashing, lead-headed nails and lead paint, for example. These should be replaced if you find them.



Meadows Crossing opens

ROAD CLOSURES



Approved road closure

Applicant: Nelson Car Club & Westland Car Club

Event: Matakītaki Rally Sprint

Location: Matakītaki Road from approximately 9.5km from the start of Matakītaki Road for 9 kilometres (RP 9.5 – RP 18.0)

Date/time: Saturday 4 December 2021, 8.00 am to 5.00 pm

COUNCIL HUI



Under Covid-19 restrictions, meetings will take place in person and via Zoom video conferencing. Public forum presenters are required to present via Zoom. Visit tasman.govt.nz/meetings-calendar for the Zoom link.

Regulatory Committee

Thursday 2 December, 9.30 am.

Audit and Risk Committee

Friday 3 December, 1.30 pm.

No public forum.

Tasman Creative Communities Subcommittee

Tuesday 7 December, 10.00 am.

No public forum.

Operations Committee

Thursday 9 December, 9.30 am.

G.J. Gardner. **HOMES**

VISIT OUR SHOWHOMES

54 & 56 Berryfield Drive. Richmond

Proud to be sponsoring:



CONTACT 03 543 9502 | 0800 42 45 46

NELSON OFFICE 195 Queen Street, Richmond

OPEN Monday to Friday, 8.00am – 5.00pm

www.gjgardner.co.nz



WHAT'S ON IN TASMAN



Christmas take and make craft kits

Until 18 December, Motueka Library will be providing a different Christmas-themed craft kit each week. Pick up your free kit and make simple crafts to give away as gifts, decorate your home, or simply enjoy the act of crafting. Free. While stocks last.



CreativeBug

Keen to give your loved ones handmade gifts this year? Look no further than CreativeBug for great gift ideas. Find CreativeBug in the e-Resources section on tasmanlibraries.govt.nz. It's free to use with your library membership – simply access with your library card number and PIN. There are hundreds of great ideas for crafters of every age and ability. Free.

Follow Tasman Libraries on Instagram

#tasmandistrictlibraries is the hottest hashtag on Instagram – check it out to see why! You'll get the inside scoop on behind-the-scenes library action, be the first to see beautiful new books, have a good laugh at librarians getting up to all manner of hijinks and more.

Moutere Hills Country Christmas Market

Saturday 4 December, 10.30 am – 3.00 pm, Moutere Hills Community Centre.

Visit the beautiful Moutere Hills for a day of Christmas shopping while supporting local artisans and craftspeople. Free entry. Over 65 stalls, including local produce, art, jewellery, beauty products, Christmas decorations, homewares, food carts, plus a free craft corner for kids. Bring cash as most stalls do not have EFTPOS. This will run at Alert Level Two. Visit mouterehills.org.nz for more information.

Backyard games

Sunday 5 December, 10.00 am – 1.00 pm, Decks Reserve, Motueka.

Bring the entire family along for some giant games and sports fun. For more information contact the Motueka Recreation Centre on 03 528 8228.

New bus service links Motueka and Richmond

The new Motueka Community Bus is about to hit the road for a six-month trial.

Run by the Nelson Tasman Community Transport Trust with Council support, the service will run three times a week from Motueka along the coastal corridor via Tasman and Māpua, to Richmond CBD and Aquatic Centre, then return.

Service Co-ordinator Rachel Mason is excited to see the bus finally on the run, starting Saturday 27 November. She says it will depart the Motueka i-SITE at 9.30 am Tuesday, Thursday and Saturday then leave the Richmond Aquatic Centre for the return journey at 1.00 pm.

The service is staffed by a dedicated team of 10 volunteer drivers and costs \$10 for a return trip.

Due to limited seating and Covid restrictions, pre-booking is essential via Motueka i-SITE.

Rachel is keen to see as many people as possible using the Motueka Coastal Bus to make the trial a success so that it may be extended in the future.

For information about the timetable, fares and terms of carriage visit ntctt.org.nz.

Let the Planning begin ...

Silly Season heading our way. Plan ahead. Get your Septic Tank sorted.

Providing Liquid Waste Management Solutions to all - Local Authorities, Government Agencies and Businesses.
bookings@nmwaste.co.nz

Give us a Freecall
0800 725 326

Visit our Website
nmwaste.co.nz