



Ruby Bay

Economic stimulus projects set to proceed

A raft of significant infrastructure and environmental projects in our District will leverage millions of dollars in Government co-funding, and help stimulate our regional economy in the wake of Covid-19.

The Government has approved \$23.6 million in funding for Tasman projects (the work is worth a total \$29.6 million including the Council's contribution). Council applications for projects worth a further \$17 million are still being considered. The Government funding means we will be able to support and drive significant benefits for our region, including:

- Major water infrastructure projects to increase resilience and meet new drinking water standards sooner than planned.

- Flood resilience improvements for the Motueka River.
- Extensive environmental programmes, including supporting landowners to meet a swathe of new national environmental standards for water, soil and biodiversity.
- Job creation and economic recovery stimulus.

We had already planned to carry out most of the infrastructure projects within the next 10 years (they were included in our Long Term Plan 2018 – 2028) and the Government funding will allow them to be done sooner and at a lower cost to the community.

However, two new projects not previously budgeted for are now possible – repairs to the Motueka River stopbank to reduce flood risk, and a new water main on Hill Street

linking Richmond's two water zones. The link will allow each zone to supply the other with water in the event of any supply disruption.

The environmental projects, largely funded from the Government's Jobs for Nature package, include wilding conifer control, restoration of the Waimea Inlet and Billion Trees plantings.

Tasman Mayor Tim King says the programmes provide an exciting opportunity to achieve landscape-scale environmental enhancements, while generating new jobs for our region.

To draw on the Government funding, we are required to commit to the projects and their timing now, prior to community consultation on the Long Term Plan 2021 – 2031, which is due to take place in March and April next year.

MEET YOUR REPRESENTATIVES

Abbie Langford – Golden Bay Community Board

As a holiday destination, Golden Bay is lucky to be on most people's wish list for a visit, so we're not expecting the Covid-19 pandemic travel restrictions to hit us too hard this summer.

Over the school holidays there was a noticeable increase in people and activity in town and, with Christmas around the corner, we're coming up to the busiest time of the year. The markets have reopened and we're looking forward to it being even more bustling than normal here with Kiwis choosing to see their own country.

That's great – it's fantastic to be busy – but it does bring extra pressures to

the community with regard to things like rubbish collection, community safety, demand on resources, and traffic. I'm hoping everyone will have patience and understanding this summer season, and be kind to each other too.

Earlier this year, the Council voted to retain our historic grandstand at the Golden Bay Recreation Park Centre. I'd like to take this opportunity to thank all groups for working together in a positive way with the Council. As a board, we're really pleased about the progress on the grandstand and I'm looking forward to updates in due course.

We're also eagerly awaiting the outcome of the Te Waikoropupū

Springs hearing; we want the best for the community and the Springs themselves. We're also waiting on decisions for the dog bylaw review in December, and the proposed local board for Golden Bay. During the local board process it's been really great to have open discussion with mana whenua, Council staff, the community and the working party.

Finally, the community board loves feedback, so please get in touch with us to share your thoughts on issues in our region.

Abbie Langford
Golden Bay
Community
Board Chair



Snowden's Bush celebrates 100th birthday

As Snowden's Bush in Brightwater marks a milestone event, the Snowden's Bush Trust is hoping to grow the much-loved reserve.

The trust is fundraising to purchase an adjacent section of land, currently in private ownership, to add to the Department of Conservation-owned reserve.

The reserve land was originally purchased through a public subscription scheme exactly 100 years ago (1920) and the Snowden's Bush Trust is making good progress towards

recreating that success. They've raised \$250,000 so far, with \$100,000 still needed. The Council is contributing a third of the total needed.

Join the birthday fun

The Snowden's Bush 100th Birthday Family Fun Day will be held on Sunday 8 November from 1.00 pm – 4.00 pm at St Paul's Reserve on Waimea West Road (next to Snowden's Bush). This is the area of land the trust hopes to purchase.

The day will include: performances by local duo Kramit; a rather large birthday cake; food carts; a wide range of stalls selling local product and crafts

made by local artisans; and free, old-fashioned family races (think egg and spoon, sack and three-legged!). There may still be spaces for stalls so if you are interested, get in touch – email wheelerkl@hotmail.com or call 021 0267 1940.

It's the first event of its kind to be held here for many years so take the whole family along to enjoy it.

If you want to find out more about the history of Snowden's Bush and get involved in the Trust's fundraising efforts, visit snowdensbustrust.nz.

Titiro whakamuri, kōkiri whakamua – a new mural for the Salisbury underpass

A new mural in the Salisbury Road, Richmond, underpass, visualises a powerful whakatauki (proverb) for 2020.

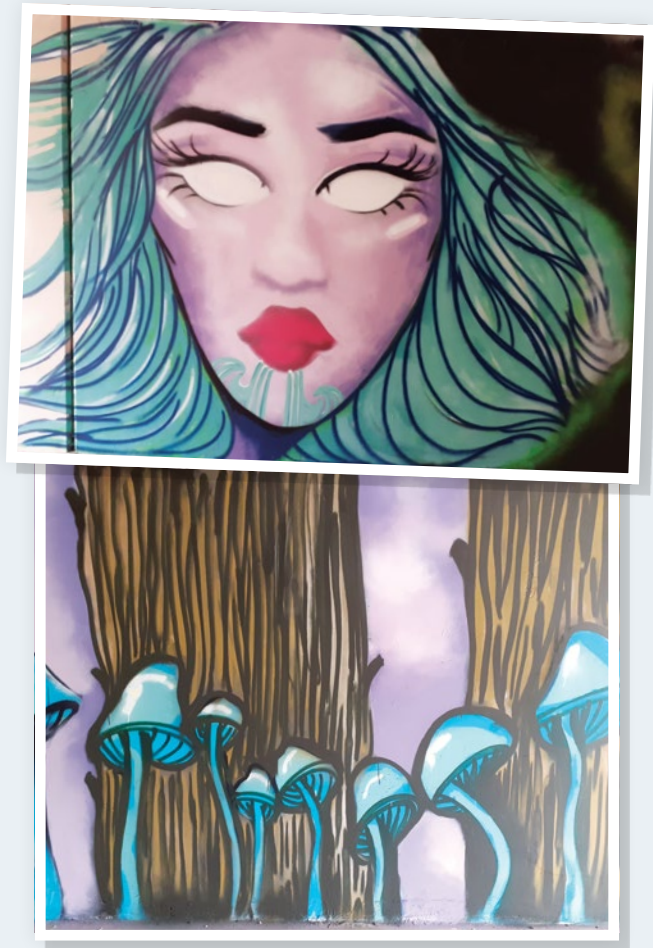
Local artist Nerys Ngaruhe, and nephew Eraia Matthews, have transformed the underpass with the artwork 'Titiro whakamuri, kōkiri whakamua', which means 'look back and reflect so we can move forward'.

The mural incorporates elements of graffiti previously painted on the underpass wall cursing 2020, acknowledging that it has been a tough year but it's important to look forward.

The wāhine featured in Nerys' work is intended to be a kaitiaki (guardian) for those passing through the underpass. Her whatu ma (white pupils) express her spiritual status. The blue werewere-kokako are a mushroom found in our native bush.

Work on the mural commenced during Te Wiki o te Reo Māori and was finished at the end of September.

An interpretation board is planned for the underpass entrance.



Proposed changes to Freedom Camping Bylaw

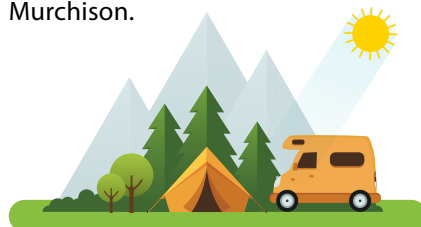
Submissions are invited until 16 November on some proposed amendments to the Freedom Camping Bylaw 2017.

These include:

- Removal of the Waitapu Bridge site – Waka Kotahi NZ Transport Agency is taking over control of the area and we no longer have jurisdiction for freedom camping.
- Removal of the Taupata Gravel Reserve – due to continued concerns with danger to nesting birds and difficulties with effective policing.
- Removal of the Waikoropupū Springs Road Reserve – area now under Department of Conservation control and Council has no jurisdiction.
- Addition of a new area on the former Rototai Tip site.

- Amending the location of the site on Decks Reserve to accommodate the new library construction.
- Amending the permitted camping area at Alexander Bluff Road Reserve to identify more precisely the area where camping is allowed.

You can read the full statement of proposal online at tasman.govt.nz/feedback or see a hard copy at Council offices and libraries in Tākaka, Richmond, Motueka and Murchison.



How to have your say

- Email your submission to info@tasman.govt.nz with 'Freedom Camping Bylaw Consultation' in the subject line.
- Head to tasman.govt.nz/feedback to submit your feedback online.
- Post your submission to 'Freedom Camping Bylaw Consultation', Tasman District Council, 189 Queen Street, Private Bag 4, Richmond 7050.

Submissions are open until 4.30 pm Monday 16 November 2020. Anyone who wishes to do so will have the opportunity to speak in support of their submission at a hearing on Wednesday 18 November 2020.

Have your say in person or online

Right now, conversations about our District's environmental and development challenges and opportunities are happening across Tasman, as we begin the multi-year process to replace our resource management plans.

Our series of Aorere ki uta, Aorere ki tai – Tasman Environment Plan community events launched on 12 October in Māpua with a well-attended drop-in day. Three more community events have followed since and we've heard from a wide range of people on what they think are our big issues and how we can have a sustainable and productive future.

Some of the things we've been talking about include the relationship between our local economy and our environment, the impacts of natural hazards and our changing climate, the importance of biodiversity and having clean air and water, appropriate housing and infrastructure development, and the many things that give our towns, centres, rural areas, and coastal places their special character.

We want you to be part of the conversation. Join us at one of our 16 upcoming community drop-in events. You'll find event details, more information about the Tasman Environment Plan, and ways to have your say on our website: environmentplan.tasman.govt.nz.



The new Aorere ki uta, Aorere ki tai – Tasman Environment Plan will be an important document for the District. It will provide for environmental protection and restoration, community resilience, and appropriate development ki uta ki tai (from the mountains to the sea).

Separate bridge to improve safety on cycleway

A much-anticipated addition to the Tākaka – Pōhara cycleway – a separate bridge for cyclists and walkers over the Motupipi River – is a step closer.

The Council has approved funding towards the construction of a shared walking/cycling bridge at the Motupipi River Bridge. The recently

completed cycleway runs on either side of the bridge but currently cyclists and pedestrians must share the bridge with other traffic. This is a safety concern that puts some people off using the path.

Council staff have worked with the Golden Bay Cycle and Walkway Society to identify a suitable low-cost solution and a separate steel bridge on timber piles is proposed.

The total estimated cost for the bridge is \$250,000. The cycleway project came in under budget, so \$88,000 is available for the bridge. The Council will share the remaining cost with Waka Kotahi NZ Transport Agency, subject to the agency approving its 51% share.

Construction is likely to take place this summer, conditional on the remaining funding being confirmed.

Good feedback received on water safety proposal

Thanks to all those who shared their feedback on the proposal to permanently chlorinate the Council-owned water supplies at Upper Tākaka, Hamama, Motueka, Riwaka/Kaiteriteri and Richmond.

We received 102 submissions and 10 people have opted to speak at a hearing to be held on 27 October. Following that, the Hearings Panel will consider all the submissions and recommend a way forward, which will be discussed on 12 November.

We got feedback both for and against the proposal and it came from across the District, not just residents that use the supplies where the changes are proposed.

Keep an eye on future issues of Newsline for updates.

Richmond hosts Clued Up Kids

A safety skills event for 9 to 11 year olds has been held this week at the Richmond Showgrounds, building on previous work to create a generation of Clued Up Kids in Nelson Tasman.

Clued Up Kids is a multi-agency programme teaching primary school-aged children confidence and life skills to help them stay safe in a range of real-life scenarios.

This week, more than 500 children from Ranzau, Auckland Point, Kura Kaupapa Māori O Tuia Te Matangi, Tāhunanui, Enner Glynn, Brightwater and Victory Schools are taking part in this event, which is in its fifth year in this region.

The hands-on activities include a 'shaky house' for practising what to

do in an earthquake, a smoky fire simulation to teach children how to react during a house fire, as well as demonstrations on water safety, interacting with dogs, road safety, quad bikes, truck and cycle safety, and first aid.

The agencies involved include the Tasman District Council, Nelson City Council, Nelson Marlborough District Health Board, Nelson Bays Primary Health, Police, Fire and Emergency NZ, Civil Defence, New Zealand Red Cross, CET Landskills, TNL and Neltech.



Motueka, Richmond and Nelson Rotary Clubs, and the Richmond Lions Club provide the volunteers who keep things running smoothly throughout the week.

Awards recognise volunteer heroes

Recently, Mayor Tim King presented the Tasman District Council's Outstanding Community Service Awards to recognise the volunteer heroes who add so much to our communities. The awards this year were presented at ceremonies in Richmond in August and Tākaka in October.

These awards acknowledge those who have been involved in a range of voluntary activities that have benefited their community for 20 years or more. It's a way to make sure they are rewarded with the thanks they deserve for their long-term commitment, generosity, dedication and outstanding service. Our communities are better for their efforts.

Congratulations to the 2020 recipients of Outstanding Community Service Awards:

- Margaret Cotter
- Patrick Lithgow
- Diane Drogemuller
- Richard Martin
- Eric Peterson

- Phillip Borlase
- Alison Oxnam
- Penny Griffith
- Ann McKenzie
- Duncan McKenzie
- Annie Joyce Wyllie
- Terry Langford
- Diane Langford

printhouse
look great in print

DESIGN • PRINT • DELIVER

Got a question? Call us: 03 543 9480
tony@printhouse.co.nz

proudly local 16 Tokomaru Place, Wakatu Estate, Stoke

Thinking ahead for peace of mind

There is no age limit. No matter what your age, the best time to plan is now. Pre-planning and pre-payment leaves nothing to chance and gives you and your family one less thing to worry about. We are here to help answer your questions

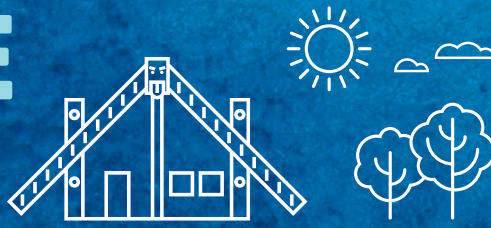
Phone us today for a **FREE INFORMATION PACK**

WR
WaimeaRichmond
FUNERAL SERVICES

Proud members of NZIFH (New Zealand Independent Funeral Homes)

03 544 4400 • 24 Champion Road, Richmond • wrfs.co.nz

NEWSLINE UPDATES



KEEPING YOU INFORMED ABOUT NEWS AND EVENTS IN THE TASMAN DISTRICT • 23 OCTOBER 2020

Positive Ageing Expo – registrations open

The Positive Ageing Expo will be back in 2021, showcasing the recreational, health and social services available in Nelson Tasman to make ageing a positive experience.

The next expo is on Friday 16 April 2021 from 10.00 am – 3.00 pm at the Headingly Centre, Richmond. Stallholder registrations are now open until Sunday 21 March 2021.

Register your organisation

Head to tasman.govt.nz/link/positive-ageing to book a stall, or contact Community Partnerships Coordinator Gary Alsop on 03 543 8980 or gary.alsop@tasman.govt.nz.

Saxton Field Reserve Management Plan review

The draft Saxton Field Reserve Management Plan review is available for public submissions until 10 December 2020. The draft plan sets out the vision, policies and methods for enhancing Saxton Field's recreation, sport, landscape, natural and cultural values. The draft plan does not propose any significant changes to how Saxton Field is developed or managed, however, we are proposing some key changes, which we are keen to hear your feedback on. The draft plan and details on how to make a submission are available at tasman.govt.nz. Printed copies are available at Tasman District Council offices and public libraries in Richmond, Motueka and Tākaka.

Sport NZ Rural Travel Fund – apply now!

The Sport NZ Rural Travel Fund applications are now invited until 31 October. The Sport NZ Rural Travel Fund offers help with travel costs for rural sports clubs and rural school teams. The fund is to help young people aged from 5 to 19 to participate in local sports competitions. Sport NZ fully funds the Rural Travel Fund, which Council administers locally on their behalf. Head to tasman.govt.nz/link/grants to check out the funding guidelines and complete the application form by 31 October.



Drop us your greenwaste and we'll turn it into

**ORGANICALLY PRODUCED
COMPOST**

Starting from \$8 per boot load of green waste

**MULCH • LAWNPOST • TOPSOIL • BARK
DELIVERY AND HIRE TRAILERS AVAILABLE**

Open seven days a week
18 Cargill Place, Richmond 7020
03 544 8857



THINK PLAN DO

Engineers / Surveyors / Planners

Land Surveying / Resource Management
Environmental Science / Geotechnical Engineering
Civil and Structural Engineering

0800 999 333
nelson@do.nz
www.do.nz

Level 1, 42 Oxford Street
Richmond 7020

do DAVIS OGILVIE
ENGINEERS / SURVEYORS / PLANNERS

NEWSLINE UPDATES



KEEPING YOU INFORMED ABOUT NEWS AND EVENTS IN THE TASMAN DISTRICT • 23 OCTOBER 2020

Free dog microchipping

Take advantage of our dog microchipping clinics in November – it's free for dogs registered in Tasman District.

Microchipping is a legal requirement for most dogs, and it's also the best tool we have for reuniting lost pets with their owners.

- **Motueka:** Saturday 21 November, 8.30 am – 9.30 am, Council Service Centre, 7 Hickmott Place, Motueka.
- **Golden Bay:** Saturday 21 November, 11.30 am – 12.30 pm, Rototai Beach Reserve.
- **Tapawera:** Saturday 28 November, 8.30 am – 9.30 am, Tapawera Recreation Reserve (on Matai Crescent).
- **Murchison:** Saturday 28 November, 11.30 am – 12.00 pm, carpark behind library (behind 92 Fairfax Street).
- **Richmond:** Every Friday morning by appointment, call 03 544 3207, Richmond Dog Pound, 121 Beach Road, Richmond.



Apply now for Creative Communities funding

Tasman District Council's Creative Communities Scheme has funding available to help groups and individuals running arts projects in our area. This could be the help you need to get your amazing art idea off the ground.

Funding applications are invited until 10 November 2020.

Creative Communities provides funding to support community involvement in the arts – whether it's music, theatre, festivals, mural painting, outdoor sculptures, art in public spaces, kapa haka, singing, art workshops or something else.

Funded by Creative New Zealand, the Creative Communities Scheme is designed to support opportunities for communities to participate in the arts. There is a focus on art projects that have a broad community involvement, involve young people or support the diverse arts and cultural traditions of local communities.

If you think that fits with your project, we'd love to hear from you.

Visit tasman.govt.nz/link/creative-communities for more information and to complete an application form.

COUNCIL MEETINGS



Unless otherwise stated, all meetings will be held at Council Chambers, 189 Queen Street, Richmond.

Operations Committee

Thursday 29 October, 9.30 am.
Public forum

Strategy and Policy Committee

Thursday 5 November, 9.30 am.
Public forum

ROAD CLOSURES



Approved temporary road closure

Applicant: Nelson Car Club
Event: Dovedale Hill Climb Car Rally

Location: Dovedale Road from the Dove Creek Bridge to Pigeon Valley Road (RP 16.00 – RP 19.90)

Date and time: Saturday 31 October 2020, 8.00 am to 5.00 pm

KEEP UP TO DATE
[TASMAN.GOV.T.NZ](https://tasman.govt.nz)

NEW SHOWHOMES

54 & 56 Berryfield Drive, Richmond

www.gjgardner.co.nz

Proud to be sponsoring:



CONTACT 03 543 9502 | 0800 42 45 46

NELSON OFFICE 195 Queen Street, Richmond

OPEN Monday to Friday, 8.00am – 5.00pm

G.J. Gardner. HOMES



WHAT'S ON IN TASMAN



Find out about Facebook

Thursday 29 October, Richmond Library. Free. Do your friends and family members ask you to join Facebook so they can share events and photos with you... but you haven't got a clue where to start? We are here to help! Come along to a free workshop and find out how to create and use a Facebook account. We'll also show you how to send private messages, and discuss privacy issues. Phone 03 543 8500 to book your spot, or talk to a library staff member.



Cryptic Crosswords

Thursday 29 October, 1.30 pm, Tākaka Library. Free. Join an exciting Cryptic Crosswords session with crosswords guru Humfrey Newton. Humfrey will guide you through the intricacies of cryptic crosswords and provide you with the tips and tricks that will turn you into a cryptic crosswords connoisseur! Bring along pen and paper and prepare to be enlightened and entertained.

Building Bricks contest

Build something marvellously Halloween or Christmas themed with your Lego at home, or at Motueka Library's Building Bricks Club meeting on Monday 2 November, 3.30 pm – 5.00 pm. Email up to three photos of your creation to adbarbour@gmail.com by **Friday 27 November**. Prizes to be won!

Spring Music Festival

Saturday 7 November, Washbourn Gardens, 5.00 pm – 8.30 pm. Enjoy a relaxing afternoon with our talented young solo singers and bands.

Op Shop and win this month!

We're running an online competition to encourage people to reduce textile waste as well as save money.

Be part of the Op Shop challenge on our Facebook page, and tell us your best tips for successful op-shopping – where to go, what to look for, and you could even show us a photo of your best pre-loved purchase!

All comments will go in the draw for one of three \$50 vouchers to go towards your next op-shopping spree.

Textile waste is a big issue – global clothing production has doubled since 2000, with the average person buying 60 per cent more items every year but only keeping them for about half as long. We're buying more, but using less – the opposite of sustainability. On top of this, textiles are now becoming a major global source of greenhouse gas emissions.

Instead of adding to this problem, we have an opportunity to re-use and create a circular economy.

Our new Op Shop map and guide can help you get started. Check it out on our website, (tasman.govt.nz, search "op shop map") or grab a copy from your local Council office, library or Op Shop.

Get involved and enter our competition at [facebook.com/TasmanDistrictCouncil](https://www.facebook.com/TasmanDistrictCouncil).

Plan Ahead!
"It wasn't raining when Noah built the ark"...
Book Now to have your Septic Tank emptied!

NELSON MARLBOROUGH WASTE

Give us a Freecall
0800 725 326
Visit our Website
nmwaste.co.nz