



New Motueka Library build to boost local construction, provide jobs

Construction of Motueka's new \$5 million library will begin as planned in September, providing 19 full-time local jobs and a boost to the construction sector and suppliers.

The new library has been planned for several years to replace the ageing and undersized library in Pah Street with a modern, sustainable new building in Decks Reserve.

Mayor Tim King said the Council had committed to a zero rates revenue increase in the next financial year, and was reassessing its projects and operations to identify efficiencies and cost-savings.

"As part of that consideration, which will be ongoing over the next

several months, we've taken a close look at the Motueka Library project. This is a project that will provide local construction jobs – as well as long-term benefits to the Motueka community through the services and opportunities the facility will provide."

Regionally-based Coman Construction is the contractor appointed to carry out the build.

Tim said part of the analysis of the library project also looked at the cost to the Council of cancelling the contract.

"The costs of cancelling are potentially significant. Continuing with the project was clearly the best option given both the benefits to the community of the new library, and the likely financial impacts of opting out now."

The Council has also decided to seek external grant funding towards some of the sustainable, cultural and landscaping features of the new library. The project is still subject to obtaining resource and building consents.

Tim said the Council would play a key role in Tasman District's economic recovery through continued investment in community infrastructure.

"We know we need to take care to manage the impacts of our rates demands on our community while balancing that with continued investment."

Find out more: More information about the Motueka Library project can be found at tasman.govt.nz/motueka-library.

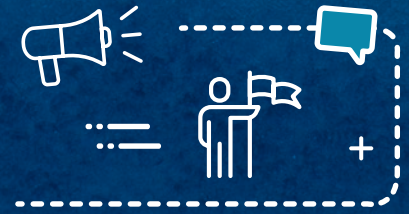
Some articles in this issue were previously published online.



For COVID-19 health advice and information, contact the Healthline team (for free) on 0800 358 5453 or visit the website covid19.govt.nz



MAYOR'S MESSAGE



I want to thank everyone for their efforts and sacrifices over the past two months as we've worked together to take on COVID-19.

We stayed home and we certainly saved lives. But as we slowly start to feel we're returning to normal and enjoying more freedom under Alert Level Two, let's not lose sight of what we need to be doing to keep

everyone safe. Keep your distance, keep up good hygiene practices and above all – stay home if you feel even slightly sick.

We are delivering Council services to the community as safely as we can. We're also back to work on a range of projects, which will help to keep many of our local businesses and residents working.

We don't fully know yet what the long term effects of the COVID-19



response will be on our region but I think we're well placed to be resilient, especially if we support our local businesses as much as we can. It could be a long haul but I feel confident we can get there together.

Mayor Tim King

Don't forget to vote in the Motueka by-election

Voting in the Motueka Ward by-election closes at 12 noon on Tuesday 26 May.

This follows a 14 day extension of the voting period made by the Electoral Officer due to concerns that some members of the public were finding it difficult to cast a valid vote during the COVID-19 restrictions.

Completed voting papers should still be posted in your nearest NZ Post box up until Thursday 21 May 2020. After that, they can be taken to the Council's Motueka office and placed in the ballot box or left in the after-hours box.

If you have not received your voting papers, special voting will be available at Council's Motueka Service Centre on Monday 25 May and until 12 noon on Tuesday 26 May.



Drop us your greenwaste and we'll turn it into

ORGANICALLY PRODUCED COMPOST

Starting from \$8 per boot load of green waste

MULCH • LAWNPOST • TOPSOIL • BARK DELIVERY AND HIRE TRAILERS AVAILABLE

GREENWASTE TO ZERO

Open until 5pm • Seven days a week
18 Cargill Place, Richmond 7020 • 03 544 8857



Council Services at Alert Level Two

Remember we remain at Alert Level Two until the review by central government on Monday 25 May. Most Council services are up and running once more but it's not quite business as usual. The following information was correct at the time of printing but to check for any updates visit our website, tasman.govt.nz, our Facebook page or give us a call on 03 548 3400.

**Unite
against
COVID-19**

- Council offices have reopened but please be aware we are operating differently in order to meet the Level Two requirements around physical distancing and contact tracing. Please be patient as your visit may take longer than usual. If you are able to carry out your business with us over the phone or online, please continue to do so.
- Our libraries have reopened but it's not quite business as usual. Opening hours are 10.00am till 4.00pm Monday to Friday only (Tuesday to Friday in Murchison). Several changes have been made to ensure we're in line with Level Two restrictions and some services aren't available yet. Please check the Tasman District Libraries website or Facebook page for more information or give the team a call if you want to know more.
- Playgrounds, exercise equipment and boat ramps are open for use.
- Kerbside recycling and rubbish collection services continue as they have throughout the

COVID-19 restrictions. The plant that sorts the mixed recycling (paper, cardboard, plastics and cans) is now operating again. All recycling is now being sorted and processed as before and no longer going to landfill. Please ensure only clean recycling is in your bin. We will be checking the bins and any that are contaminated with rubbish will not be collected. Glass continues to be sent to Auckland for recycling as usual.

- At our Resource Recovery Centres normal opening hours have resumed and the full range of services (with the exception of Reuse shops) is now available. This includes waste, greenwaste, recycling drop-off, whiteware and hazardous goods. We're requesting contact details for all our customers and limiting numbers to maintain safe distancing. There may be delays at times, so please be patient. Payment by EFTPOS is still preferred.

- The Aquatic Centre and our recreation centres are now open but numbers are being managed. Physical distancing and contact tracing measures are in place. Social gatherings of more than 10 people are not permitted in our centres.

Please keep doing the right thing at Alert Level Two:

- COVID-19 is still out there. Play it safe.
- Keep your distance from other people in public.
- If you're sick, stay home. Don't go to work or school. Don't socialise.
- If you have symptoms of cold or flu call your doctor or Healthline and get tested.
- Wash your hands. Wash your hands. Wash your hands.
- Sneeze and cough into your elbow, regularly disinfect surfaces.
- Keep a track of where you've been and who you've seen.




FLETCHER VAUTIER MOORE
LAWYERS

Providing legal advice on
property and business matters.

Zoe Bond
Associate

zbond@fvm.co.nz
265A Queen Street, Richmond
Phone (03) 543 8301

**SURVEYING &
RESOURCE MANAGEMENT**

- Project Management
- Resource Consents & Planning
- Subdivision Design & Management
- Land Development Engineering




STAIG & SMITH^{LTD}
ENHANCING THE LAND

81 Selwyn Place, Nelson • Ph 03 548 4422 • www.staigsmith.co.nz



SUSTAINABLE TASMAN

Supporting Warmer Kiwi Homes

The year's first snow and frosts have arrived and we'll all be feeling the chill in the air as we farewell the last month of autumn.

For those on lower incomes who need some extra warmth in their house, the Warmer Kiwi Homes programme has begun again. Council contributes funding to this initiative. Grants are available to cover two-thirds of the cost of ceiling and underfloor insulation and/or an efficient heat pump, wood burner or pellet burner. Heater grants are capped at \$2,500.

Insulation and heating can make a massive difference to your health, as well as warmth, so it's worth checking your eligibility. It can also help prevent respiratory illness, and the health of our community's most vulnerable, which is increasingly important as we all work to eliminate COVID-19. The Government has also doubled its Winter Energy Payment, which helps beneficiaries and older New Zealanders with power costs

in the winter months. This started on May 1.

More than 20,000 efficient heaters and insulation have been installed in New Zealand homes since the programme launched in July 2018.

To be eligible for a grant for a heater, the home must have existing ceiling and underfloor insulation that is up to EECA standards. Homeowners are eligible for a grant if they are living in the home (not a landlord) and:

- The home was built before 2008

- The homeowner has a Community Services Card or SuperGold combo card, OR the home is in an area identified as low-income
- The home doesn't have an existing operational efficient heating appliance in the main living area
- The homeowner permanently occupies the home.

Homeowners can find out if they qualify for the Warmer Kiwi Homes grant by visiting the EECA website, energywise.govt.nz.





NELSON MARLBOROUGH WASTE

Keeping our homes, businesses & public places *clean & safe.*



Septic Waste



Grease Traps



Interceptors & Sumps



Waste Oil



Porta-Loos Hire

Professional Liquid Waste Solutions

Committed to the Health & Safety of our Staff and Community.

Give us a Freecall

0800 725 326

Make an Online Booking

www.nmwaste.co.nz

Youth photo competition for Matariki

Tasman District Council invites young people (aged 12 – 24) to submit their photographs for a contest dedicated to the Matariki Celebration. Entries are invited until 28 June.

The star cluster Matariki appears in our skies in the month of Pipiri (June–July), marking the start of the Māori New Year.

This year we are celebrating our local stars, heroes and heroines tuahangata/tuawahine. For this contest, we welcome photos that show your own heroes and heroines, people who have had significant

impact on your personal life or people who you admire and respect.

Other Matariki themed photos are also welcome and there are \$100 Prezzy Card prizes available in each category as well as spot prizes to be won.

Find out more at
tasmanyouthhub.co.nz



Kingsland Forest track closures

Forestry harvesting started this week in the Kingsland Forest area in Richmond. The harvest consists of 33ha, primarily in the upper slopes and a smaller area in the lower section of Reservoir Creek.

Recreational tracks around the harvest areas will have to be closed to keep everyone safe. We appreciate this is a very popular area so we've tried to minimise the impact on the public by splitting the closures into phases, so that only tracks affected by the current harvest operations will be closed at any one time.

The harvesting will be done in three phases and will take around four months to complete, with some overlap between phases.

Phase One: All walking and biking tracks are closed above the Big Skid, Grassy Saddle and Upper Jimmy Lee Creek. Duration approximately two and a half months.

Phase Two: All walking and biking tracks will be closed above Cell Phone Tower, Grassy Saddle and Valhalla Water Tanks. Duration approximately two months (overlapping with Phases Two and Three).

Phase Three: All walking and biking tracks will be closed in the

Reservoir Creek catchment and above Cell Phone Tower. Duration approximately one month.

Visit our website tasman.govt.nz for more details, including a map of the closures and the harvest report.

Please look out for the signage in place and stay out of the closed areas at all times. Thanks for your patience while we carry out this work as quickly and safely as possible.

ADVERTISE YOUR BUSINESS IN NEWSLINE!

EMAIL: reception@hothouse.co.nz
SUBJECT LINE: Newsline Advertising

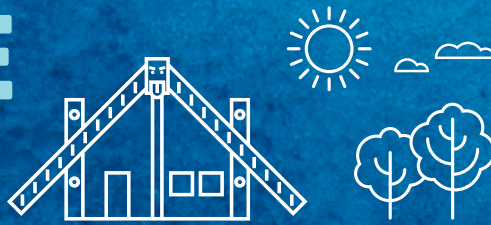
FREE COMMERCIAL QUOTES
Putting WASTE in its Place!

CAN PLAN

www.canplan.co.nz
547 0642

WINNER
NelsonPine
CHAMBER OF COMMERCE
2016
BUSINESS AWARDS

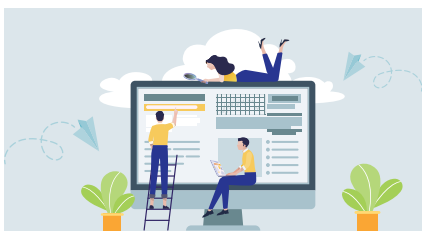
NEWSLINE UPDATES



KEEPING YOU INFORMED ABOUT NEWS AND EVENTS IN THE TASMAN DISTRICT • 22 MAY 2020

Now's your chance – tell us what you think of us!

An annual survey of Tasman residents' satisfaction with their Council begins on Friday 22 May. We have commissioned the National Research Bureau (NRB) to carry out the survey. The survey provides data on people's levels of satisfaction with our services, and on which Council decisions they approve or disapprove of. We urge anyone who is contacted to take part to use the opportunity to give feedback – the results help shape the future of the services and facilities we provide to the community. The interviews this year will be conducted by telephone, along with some online surveys. With changes in demographics and use of technology, we want to make sure those who do not have a landline phone are represented. NRB will survey 400 residents over the age of 18, using a randomised selection method. NRB will contact residents from 22 May – 9 June. Although the results of the survey are made public, individual survey respondents' details are confidential. Of course there have been many changes to the delivery of Council services recently due to the COVID-19 restrictions, but the survey must be done now so we can meet our legal requirements around levels of service for the Annual Report.



Bateup Road asphalt sealing

Work has restarted to complete the asphalt sealing on Bateup Road. The road surface will be prepared first before the asphalt is laid, followed by line marking. Weather permitting, the work should be completed by the end of May. There will be some disruption to traffic, so please follow the signs and instructions of the traffic management teams. Thanks for your patience while we complete this work as quickly and safely as possible.

Moutere Highway detour – Mission Bridge Replacement

Work to replace Mission Bridge (near Davey Road, Upper Moutere) is now underway. The project was previously scheduled to begin in March but was delayed due to COVID-19 restrictions. The Moutere Highway is closed at the bridge and detours are in place via Gardner Valley Road or Harley Road to the Coastal Highway. For more details, visit tasman.govt.nz, search 'Mission Bridge'.

Council news direct to your inbox

News and updates about Council projects, services and consultations are now available direct to your email inbox. COVID-19 restrictions meant we weren't able to deliver Newsline to homes throughout the District each fortnight. Although we're able to deliver again now, you may want to have it emailed to you as well, along with other Council news. Visit the website, tasman.govt.nz, search on "latest Newsline" and follow the link to join the mailing list.

Apply now for the Sport NZ Community Resilience Fund

Applications are open until 19 June for the Sport NZ Community Resilience Fund. The fund is to support regional and local sports organisations who are affiliated with a Sport New Zealand national investment partner. This means, most play, active recreation and sport clubs are eligible to apply.

Clubs can apply for an immediate grant of up to \$1,000 cash payment to cover their fixed costs for invoices such as rent, phone and power. Visit the Sport Tasman website sporttasman.org.nz and look under "Funding" to find out more and apply for funding to help your club get through these tough times.

Concerned about your rates bill?

The Council has committed to a 0% rates income increase next year* as one way to try to ease the financial demands on our community.

If you need to talk to us about your most recent rates bill please get in touch – we have a range of options that you can take up if you need some extra flexibility.

Find out more:

- Phone (03) 543 8400
- Email rates@tasman.govt.nz
- Visit tasman.govt.nz/rates

**excludes an allowance for population growth. The Council is achieving the overall 0% rates income increase by reducing the proposed general rate. Because our District has a high number of targeted rates determined by where people live and the services they receive, the overall amount individual ratepayers pay will vary.*

IS YOUR WATER SAFE?

Get the BEST from your water!
Take the WORST out of it!

- Water Purification
- Filtration
- UV Sterilisers
- Giardia Filters
- Water Softening

WATER TESTING SERVICE
AVAILABLE.



thinkwater.
TASMAN BAY
BEYOND IRRIGATION

397 HIGH STREET MOTUEKA.
PHONE: 03 528 8888



The specialists in design, supply and installation of domestic & horticultural irrigation, drainage, effluent & septic systems, pumps, water harvesting & tanks and water treatment & filtration.

NEWSLINE UPDATES



KEEPING YOU INFORMED ABOUT NEWS AND EVENTS IN THE TASMAN DISTRICT • 22 MAY 2020

HAVE YOUR SAY



For details of our current consultations, head to tasman.govt.nz/feedback.

Streets for people survey

The COVID-19 lockdown has challenged the idea that streets are designed for vehicles. Streets have been transformed into hubs of interaction, recreation, art and play. We have accessed spaces normally reserved for cars, so should we now review how we plan these areas in future? Visit tasman.govt.nz, and search on "streets for people" and complete a short survey to tell us how the lockdown has changed your perception of streets and how you want them to look in the future. Feedback is invited until 31 May 2020.

Speed Limit Bylaw consultation extended

The public consultation on a proposal to change speed limits on four roads around the District has been extended until 25 May 2020. The proposal is to set lower speed limits for three roads – Gibbs Valley Road, Hoddy Road and Wharariki Road and to extend an existing 50km/h speed limit on Abel Tasman Drive in Pōhara by 25m. Get all the details and make your submission at tasman.govt.nz/feedback.

2020 vision of the future – Long Term Plan 2021 – 2031

Your direction on what we should be focusing on over the next ten years is really important to us. What projects or activities do you want completed in this Long Term Plan?

Check out the pre-engagement document, 2020 Vision for Tasman – Whakakitenga Ruamano Rua Tekau on the website tasman.govt.nz/feedback. But please be aware that the pre-engagement document was created prior to COVID-19 reaching New Zealand.

In light of the potentially huge, but still not fully known, impact of the virus and our response to it, the Council has extended the consultation period out to 12 June 2020.

For anyone who has already provided feedback, thank you – your views will still be included. If you feel you want to give more or different feedback in light of recent events, you are welcome to do so.

Rating information is publicly available

Our rating information database includes information such as the property location, valuation number, capital and land value as at 1 July 2019, and current year's rates. Rating information is available for you to view at any service centre during office hours. You can also search online at tasman.govt.nz/link/rates-search.

Notice given under section 28, Local Government (Rating) Act 2002.

COUNCIL MEETINGS



All meetings are being held via Zoom video conferencing. See the meeting calendar on the website for the access links.

Commercial Committee

Friday 22 May, 1.30 pm. Public forum

Full Council

Thursday 28 May, 9.00 am.

Community Grants Subcommittee

Tuesday 2 June, 9.30 am. No public forum

Kingsland Forest Plan – Deliberations

Tuesday 2 June, 1.30 pm. No public forum

Audit and Risk Committee

Wednesday 3 June, 1.30 pm. Public forum

24 HOUR ASSISTANCE: PHONE YOUR LOCAL SERVICE CENTRE

RICHMOND 03 543 8400 • **MURCHISON** 03 523 1013

MOTUEKA 03 528 2022 • **TAKAKA** 03 525 0020

NEW SHOWHOMES

54 & 56 Berryfield Drive, Richmond

www.gjgardner.co.nz

Proud to be sponsoring:



CONTACT 03 543 9502 | 0800 42 45 46

NELSON OFFICE 195 Queen Street, Richmond

OPEN Monday to Friday, 8.00am – 5.00pm

G.J. Gardner. HOMES



Apply now for a Community Grant

Do you have an exciting community project in the pipeline? Are you planning an event when we are allowed to get together again? A Community Grant could help to make it happen.

Applications for our Tasman District Council Community Grants are open now and close on 31 July 2020. Funding is available for Tasman-based projects that meet a community need and have community support. Priority is given to projects that can show financial support from other sources as well.

Grants are available for projects that fit into the following categories:

- Community and economic development initiatives
- Arts/culture/heritage/museums
- Festivals and events

- Youth and children
- Social services
- Environment
- Emergency services
- Sports and recreation facilities.

To apply

1. Visit tasman.govt.nz/link/grants to download the Community Grants from Rates application form.
2. Work on the application at your own pace – and save as you go.
3. Send the completed application form back to us using the simple online form.



Higgins Heritage Park – grant recipient

Get all the details online at tasman.govt.nz/link/grants or email our Community Partnerships Coordinator Lani Evans on lani.evans@tasman.govt.nz if you have any questions.

Celebrating our community heroes

If you know of someone who you think deserves recognition for all their hard work, you can nominate them for an Outstanding Community Service Award.

Tasman District Council wants you to help identify and celebrate the wonderful people throughout our District by making nominations for this annual award.

Nominations are invited until 30 June 2020.

There are a huge number of volunteers who work tirelessly to make our communities better places to live, says Mayor Tim King.

“Even with all the challenges we’ve faced over the past months due to the effect of COVID-19, the strength of community spirit has really shone through. The people who

are always ready to help when needed are the ones we want to celebrate.”

Tasman District Council's Outstanding Community Service Awards recognise the unsung heroes who add so much to our communities. The awards are aimed at acknowledging those who have volunteered for 20 years or more.

It's a way to make sure they are rewarded with the thanks they deserve for their long-term commitment, generosity, dedication and outstanding service.

Nominees must be residents of the Tasman District to qualify.

More information and nomination forms are available on the Council website, tasman.govt.nz and search “community awards.”

You can also email your completed nomination form to gabrielle.drummond@tasman.govt.nz

