

# NEWSLINE

12 JULY 2019  
ISSUE 452



Waimea Inlet, Tasman

## One Billion Trees programme provides boost for Waimea Inlet



The One Billion Trees Fund is committing more than \$1 million to support the restoration of Tasman's Waimea Inlet.

Forestry Minister Shane Jones, alongside Agriculture Minister and local MP Damien O'Connor, made the funding announcement earlier this month at a tree planting event at the Hoddy Estuary Reserve near Richmond.

The investment comes from the \$240 million grants and partnership fund as part of the Government's One Billion Trees programme.

"This is a significant opportunity that will see more than 70,000 native trees planted across the estuary over the next three years," Shane Jones said. "There is a growing understanding of the significant ecological role this inlet plays, particularly for rare and threatened native plants and animals and important populations of coastal wetland birds and migratory wading birds.

"This funding will help build on the impressive work already underway in Waimea Inlet with more than 200 volunteers involved in trapping and habitat restoration across the area."

The Tasman District Council, Nelson City Council, iwi, Department of Conservation and the Tasman Environmental Trust have all been working together to restore the Waimea Inlet.

Restoration of the inlet and surrounding areas will provide benefits for native biodiversity, such as:

- the return of threatened native fish to streams and wetlands;
- the creation of habitat for other native species, such as banded rail;
- redressing the excessive loss of some ecosystems in the landscape;

- preventing their regional extinction, especially lowland ecosystems;
- preventing more extinctions of our native plants and animals by providing them with adequate habitat;
- enhancing the populations of those native species that have managed to persist.

The Government-funded planting will enable the scaling up of the restoration of native habitats, which are critical to healthy ecosystems.

### Get involved

Would you like to be part of the restoration efforts for the Waimea Inlet? Email [anna.gerraty@tasman.govt.nz](mailto:anna.gerraty@tasman.govt.nz) to register your interest.



**RICHMOND AQUATIC CENTRE: LANE POOL NOW OPEN!**



**tasman**  
district council

# In case you missed it

A summary of recent Council meetings and the decisions made.

## Engineering Services Committee – 4 July 2019

- Staff outlined the history of the Ruby Bay seawall. There are no simple or straightforward changes that can be made to the seawall that would not trigger a resource consent process, and that would reduce the impacts of seawater inundation during storm events like ex-cyclone Fehi. We will be investigating the stormwater system in the Ruby Bay area to determine what improvements (if any) can be made.
- The committee received a report on chlorination in the Richmond water supply. If chlorination was employed full time for Richmond at a low level it would cost about \$6000 to \$8000 a year. Currently the network is chlorinated when major pipe repairs or maintenance introduce the risk of contamination, or if monitoring picks up a positive bacteria result. The cost of dealing with one or two events including laboratory, contractor, and Council staff time could well cover the cost of a whole year's chlorination.

- The joint Tasman District Council/Nelson City Council community speed survey closed on Friday 14 June 2019. More than 1900 responses were received and a summary of the results will be available in the next few weeks. The results will be fed into the speed limit review later this year.

## Extraordinary Full Council – 4 July 2019

- Approved the terms of reference for a review of the Council's provision of community housing. A Community Housing Review Steering Group was appointed, comprising Councillors Stuart Bryant (Chair), David Ogilvie, Paul Sangster, Dana Wensley and Anne Turley together with the Community Development Manager and Corporate Services Manager.
- Agreed to begin public consultation on a proposed development plan for Port Tarakohe as part of the draft Port Tarakohe Business Plan, intended to guide the future development and upgrade of the port in Golden Bay. More information on page 6.

---

# Community conversation on sea level rise to begin

The impacts of climate change affect us all, and in Tasman we continue to experience the effects of significant weather and storm events. As a Council we want to better prepare our communities for the effects of ongoing changes to weather patterns and rising sea levels.

We've been working on a project to enable our community to work towards long-term adaptive planning for sea level rise and coastal hazards.

While the rate and magnitude of future sea level rise is uncertain, we do know that rising sea levels will have increasing implications for development and infrastructure in coastal areas, as well as environmental, cultural and societal effects.

As a starting point for the conversation, we've mapped the extent of low lying coastal land in Tasman District that may be affected by sea level rise. The maps show a range of sea level rise scenarios, and can also show the effect of higher tides caused by storms. We have also mapped areas of historical coastal erosion (sediment loss) and accretion (sediment gain) and

the presence of coastal structures such as stopbanks, walls and rock revetments.

### Community conversation planned from 22 July

The maps will be available on our website from 22 July, when we begin the first stage of community engagement. In the early stage, the focus of the programme will be on raising awareness, developing a common understanding of the information we have and gathering your feedback.

We need to hear about the things that are important to you that may be impacted by rising sea levels. These may be areas, objects or experiences that you value – maybe it's your own assets, beach access, community facilities, heritage items or coastal habitats for shorebirds and other native species.

We'll also be asking you to share your observations of coastal hazards in our District.



The engagement will run from 22 July to 13 September. It is the first opportunity to talk about the effect of sea level rise for our communities, but it won't be the last. Long-term adaptive planning work will take several years to complete and the community conversation will be ongoing.

More information will be available on our website from 22 July.

**STAND IN THE PLACE THAT YOU LOVE.**

Elections for Tasman's mayor, councillors, Community Board members and Nelson/Marlborough District Health Board members will be held in October this year.

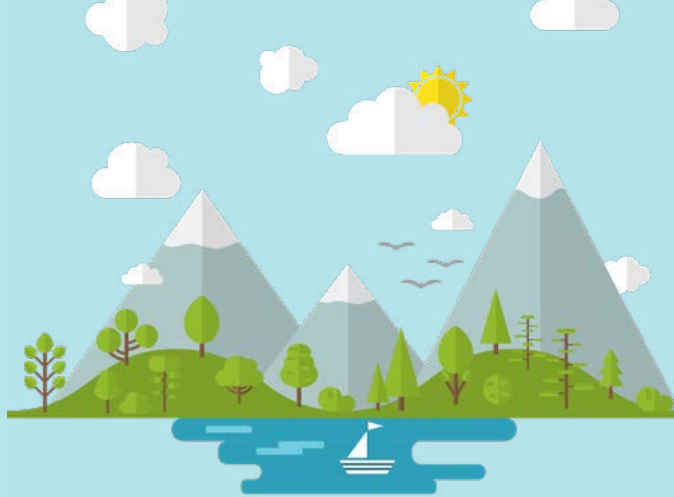
### Thinking of becoming a candidate?

Candidate nominations open on 19 July and close on 16 August 2019. To stand for Council, you must be: a New Zealand citizen aged over 18 and enrolled on the electoral roll.

**Find out more:** For more information head online to [tasman.govt.nz/link/elections](http://tasman.govt.nz/link/elections). Nomination packs are available online and at Council offices and libraries.

# Councils, iwi and DOC unite for conservation

An alliance of councils, iwi and the Department of Conservation in the top of the South Island will work collectively with their communities to restore natural landscapes across the region – from west to east and from the mountains to the sea.



The Kotahitanga mō te Taiao Alliance includes the Buller, Tasman, Nelson, Marlborough and Kaikōura councils, the West Coast Regional Council, iwi and DOC.

The alliance was launched last month during Matariki, marking the start of a new season and the start of a new way of working for conservation.

The Alliance will provide environmental leadership and coordination to protect and enhance the wider region's diverse natural landscapes. The landscapes include vast areas of beech forest, eastern dryland, alpine hinterland, the sheltered sounds of Marlborough, freshwater catchments and varied marine environments including extensive intertidal flats and wild and exposed coasts. Hundreds of native plant and animal species live within those landscapes, including some unique to the region.

Kotahitanga mō te Taiao Alliance independent chair Martin Rodd says the Alliance and its strategy are focussed on enabling landscape-scale conservation projects that have environmental, social, economic and cultural benefits.

"Our aspiration is to see the natural environment across the top of the South Island flourishing through ecological restoration over large areas with people caring for and benefiting from the environment and the flourishing nature in turn enriching communities.

"Kotahitanga is about collaboration, working together in collective action with communities, industry and a variety of organisations to achieve conservation gains."

Brendan Wilson, chair of Ngāti Apa ki te Rā Tō Trust, says iwi look forward to achieving significant outcomes across the wider top of the South area.

"The acceptance from the Alliance to embrace mātauranga Māori concepts as a foundation ensures that our long-held values of protecting and enhancing our natural environments will have a greater chance of success."



## Grants for Motueka community groups

The Motueka Community Board has approved three \$500 grants to groups working hard in the community.

Motueka Riding for the Disabled has received a grant towards winter horse covers. Keep Motueka Beautiful will receive funding towards a second edition of the popular "Walking Motueka" booklet, while Tasman Gymnastics has received a grant towards their work helping children with disabilities to develop strength, coordination, movement and balance.

The Board is pleased to be able to support local community groups who help make Motueka a great place. The board's discretionary grants assist these groups to make a significant contribution to the community.



**24 HOUR ASSISTANCE: PHONE YOUR LOCAL SERVICE CENTRE:**

**RICHMOND 03 543 8400 • MURCHISON 03 523 1013  
MOTUEKA 03 528 2022 • TAKAKA 03 525 0020**

## Focus on future digital services

The Council is planning on appointing a chief information officer to lead the development of online services and smart technology across the organisation.

Reporting to the chief executive, the chief information officer will be charged with leading the Council's digital transformation.

Chief executive Janine Dowding said Tasman was one of the fastest growing regions in the country, and the Council was under increasing pressure to enable and provide for that growth.

"One of the ways we can respond to those challenges is through the smart use of technology. We don't have the capability within our current technology to make that leap and the longer we delay, the further we fall behind.

"Once appointed, the chief information officer will need to build a compelling case for investment in digital transformation, including the cost savings that will be achieved over time. I am certain that if we do nothing then there will be a greater cost.

"As a Council we hold a lot of information and data on behalf of our communities. How we use, share and distribute this material to the benefit of our people is a key motivation in our digital transformation. Information is a valued public asset that should be accessible when people want it and in a form they can use.

"We are looking for a strong leader to drive a culture and environment that enables our residents and stakeholders access to the services they need, when and where they want them."



## Bold and ambitious ideas sought for Te Taihu intergenerational strategy

A series of community conversations called Te Taihu Talks will be held across Marlborough, Nelson and Tasman throughout July and August to feed into the development of the Te Taihu Intergenerational Strategy.

"We want to bring the community together in an informal way to help us shape the strategy," says Miriana Stephens, Te Taihu Intergenerational Strategy programme director.

"The Te Taihu Intergenerational Strategy is putting a new lens on decision making across Te Taihu and challenging us all to be better ancestors. It's a new way of thinking about regional development that unlocks the opportunities and potential that we know exists here. We can achieve more when we work together, so we've worked hard to bring everyone to the table to have this important conversation about our future," Ms Stephens says.

The initiative is led by Wakatū Incorporation in partnership with Nelson City Council, Tasman District Council and Marlborough District Council, the business community, NMIT and whānau, hapū,

and iwi across Te Taihu. It is supported by a \$435,000 investment from the Government's Provincial Growth Fund.

For more information head to [tetaihu.nz](http://tetaihu.nz) or [facebook.com/tetaiuhu](https://facebook.com/tetaiuhu) to register for a Te Taihu Talk and keep up to date.

THEME / TOPIC	LOCATION	VENUE	DATE / TIME
Courageous Leadership	Richmond	Saxton Oval	Thursday 18 July, 6.00 pm to 8.00 pm
Ambition	Motueka	Te Āwhina Marae	Wednesday 24 July, 5.00 pm to 8.00 pm

# IS YOUR WATER SAFE?

**Get the BEST from your water!  
Take the WORST out of it!**

- Water Purification
- Filtration
- UV Sterilisers
- Giardia Filters
- Water Softening

**WATER TESTING SERVICE AVAILABLE.**

**thinkwater.**  
**TASMAN BAY**  
BEYOND IRRIGATION

**397 HIGH STREET MOTUEKA.**  
**PHONE: 03 528 8888**

The specialists in design, supply and installation of domestic & horticultural irrigation, drainage, effluent & septic systems, pumps, water harvesting & tanks and water treatment & filtration.



# Rivercare meetings get underway

Join us at one of our annual rivercare meetings throughout the District to discuss river management issues and works. Topics will include flood protection, riparian maintenance and erosion control, which may be significant to the area you live in.

If you are planning to attend and have a specific question or topic you would like to discuss, please contact Rivers and Coastal Engineer Giles Griffith on 03 543 7244 or Email: [giles.griffith@tasman.govt.nz](mailto:giles.griffith@tasman.govt.nz).

## Upper Motueka Catchment

Monday 5 August 2019, 3.00 pm, Tapawera Community Rooms. (Upper Motueka, Motupiko, Tadmor and Sherry Rivers.)

## Dove River

Monday 5 August 2019, 7.00 pm, Dovedale Hall.

## Waimea Catchment

Tuesday 6 August 2019, 10.00 am, Council Chambers, Richmond. (Waimea, Wai-iti and Wairoa Rivers.)

## Lower Motueka Catchment

Wednesday 7 August 2019, 4.00 pm, Motueka Service Centre. (Lower Motueka, Riwaka, Brooklyn, Little Sydney, Hamiltons and Scotts Drains, Pauley Creek, Company Ditches and Moutere Rivers.)

## Takaka Catchment

Thursday 8 August 2019, 3.00 pm, Golden Bay Shared Recreation Facility. (Takaka, Waingarō and Anatoki Rivers.)

## Aorere Catchment

Thursday 8 August 2019, 11.00 am, Collingwood Tavern. (Aorere and Kaituna Rivers.)



# Temporary chlorination – Richmond water supply

Over the next month we will be connecting a new water main on Headingly Lane into the live water supply network for Richmond.

At times during this work we will chlorinate the Richmond water supply as a precaution to make sure it remains safe to drink while the pipe is connected.

## Chlorination dates

- **22 – 25 July – please note**, this is a change to the dates advertised previously.

The work is weather dependent, so keep an eye on the Tasman District Council Facebook page and website for any updates.

You can reduce the taste and smell of chlorine simply by:

- Using a filter jug
- Chilling the water in the fridge before drinking

## Advice for owners of pet fish

If you have fish, we advise de-chlorinating the water before topping up tanks. You can get a neutralising agent from pet stores.

In addition to chlorination, on Tuesday 16 July there will be a temporary change to the Richmond water supply that will increase the nitrate level. We recommend you do not change the water in your fish tank on this day as a sudden change in nitrate levels can be shock to fish. The change is due to a planned shutdown of a water trunk main.



  
FLETCHER VAUTIER MOORE  
LAWYERS

Providing legal advice on  
property and business matters.

**Zoe Bond**  
Associate

[zbond@fvm.co.nz](mailto:zbond@fvm.co.nz)  
265A Queen Street, Richmond  
Ph: (03) 5438301

**SURVEYING &  
RESOURCE MANAGEMENT**

- Project Management
- Resource Consents & Planning
- Subdivision Design & Management
- Land Development Engineering



  
**STAIG & SMITH**<sup>LTD</sup>  
ENHANCING THE LAND

81 Selwyn Place, Nelson • Ph 03 548 4422 • [www.staigsmith.co.nz](http://www.staigsmith.co.nz)

# NEWSLINE UPDATES



KEEPING YOU INFORMED ABOUT NEWS AND EVENTS IN THE TASMAN DISTRICT • 12 JULY 2019

## Vegetation control – roadside spraying in rural areas

### Registration of Non-Spray Areas

Tasman District Council's roading maintenance contractor is responsible for vegetation control within the road reserve. This includes the use of knock-down, residual and brushweed herbicides to remove vegetation growing in the roadway and around street furniture. The active herbicides authorised under Council's resource consent are norflurazon, oryzalin, simazine, terbuthylazine, glyphosate, metsulfuron, haloxyfop, triclopyr and picloram/triclopyr. Methods for treatment are foliar and basal spraying.

You can request that your rural property frontage not be chemically sprayed and instead undertake the vegetation control yourself. On approval, the Council will mark the no spray area with red marker pegs.

Rural residents who choose the "No Spray" option must control the vegetation growth along their property frontage to ensure road users are not impeded and all roadside signs and markers are clearly visible. Vegetation height should not exceed 300mm. Any stormwater drainage ditches need to be kept clear of excess vegetation. At intersections vegetation must be kept well clear to ensure good sight lines for traffic using the intersection.

If you wish to apply for your property to be added to the "No Spray" list, please contact Nikki Shepherd, Technical Officer Transportation, Tasman District Council, Phone 03 543 7234 or email – [nikki.shepherd@tasman.govt.nz](mailto:nikki.shepherd@tasman.govt.nz).

### Roadside spraying on State Highways

Contractors employed by the New Zealand Transport Agency undertake an ongoing vegetation control programme to ensure that roadside vegetation does not affect the safety or operation of the region's state highway network.

This programme includes the spraying of chemical herbicides including the following active ingredients: glyphosate, metsulfuron, terbuthylazine and triclopyr. Anyone wishing to register their property as a 'no-spray' zone, which requires a commitment to maintain a property's highways frontage to specifications provided by NZTA, may do so by contacting Nicole White on 03 548 1100 or at WSP Opus, Private Bag 36, Nelson.

## Newsline survey – thanks for your feedback

A big thank you to everyone who took part in our Newsline survey recently. We've contacted the five winners of the family pool passes – congrats to Lis Cleland, Phil Allan, Melissa Gallagher, Brooke Whitnell and Emma Cheshire. There were 242 responses to the survey and more than 75% of respondents read Newsline always or frequently. There was a lot of great feedback about the content you find the most useful so we'll be looking at options for improvements over the next few months.



## Have your say: Port Tarkohe proposed development plan

### Consultation open 6 July – 30 July 2019

We've been working with iwi and key stakeholders to develop a draft business plan to guide the future development and upgrade of Port Tarkohe in Golden Bay.

Driving the need for development is a projected increase in mussel production in Golden and Tasman Bays. An upgrade would allow the port to cope with increased mussel tonnage, and realise significant economic benefits from the aquaculture industry.

We know Port Tarkohe is widely used and valued by the local community. The area is also of high cultural significance for iwi, and is an important habitat for little blue penguins.

Balancing the economic and operational use of the port with social, cultural, recreational and environmental values is a key consideration in the development of the business case.

The proposals would see the recreational and commercial areas of the port upgraded and reconfigured to meet the needs of all users.

### Find out more

You can read the consultation information and make an online submission via our website – [tasman.govt.nz/feedback](http://tasman.govt.nz/feedback).

More information and submission forms are also available at Tasman District Council offices and libraries.



Drop us your greenwaste and we'll turn it into

## ORGANIC COMPOST!

Starting from \$6 per boot load.

**MULCH • LAWNPOST • TOPSOIL • BARK  
DELIVERY AND HIRE TRAILERS AVAILABLE**

### GREENWASTE TO ZERO

Open until 5pm • Seven Days a Week  
18 Cargill Place, Richmond 7020 • 03 544 8857





# NEWSLINE UPDATES



KEEPING YOU INFORMED ABOUT NEWS AND EVENTS IN THE TASMAN DISTRICT • 12 JULY 2019

## Inflation increases for development contribution charges

As of July 1 2019 we've inflation-adjusted our development contribution charges.

The revised charges will apply to developments where:

- in the case of a resource consent – when the Section 88 check is completed after 1 July 2019 and before 30 June 2020.
- in the case of a building consent – when the application was formally received by us after 1 July 2019 and before 30 June 2020.
- and in both cases above, where a DC notice for this development was issued after 1 July 2019.

Developments applied for during this timeframe are covered by the 2018 – 2028 Financial and Development Contributions Policy.

Developments with consent applications lodged prior to 1 July 2018 are covered by the 2015 – 2025 Financial and Development Contributions Policy.

Full details of charges and the Development Contributions Policy can be found at [tasman.govt.nz/link/development-contributions](http://tasman.govt.nz/link/development-contributions).

## Stay safe on icy roads

Icy winter roads pose a significant challenge for driving at this time of year.

High risk areas to watch out for are south-facing shaded patches of road, and inland valleys.

While grit applied to the road surface can help a little, it does not make the road safe – in fact, gritting only improves the skid resistance of an icy road by 15%.

The most important way to keep yourself and your passengers safe is to drive to the conditions. Any dark or damp section of road should be approached with extreme caution during periods of cold weather. Please slow down and drive to the conditions.



## ROAD CLOSURES



### Proposed closure

**Applicant:** John McIntyre Promotions Limited

**Event:** K2M Multisport Event

**Location:** Aranui Road, Mapua – from the roundabout on the Tahi Street and Aranui Road intersection, to the entrance of Mapua Wharf.

**Date and time:** Saturday 2 May 2020, 5.00 am to 7.00 pm

**Objections close:** Friday 16 August 2019

### Approved closure

**Applicant:** Fulton Hogan Limited

**Event:** Lee Dam Road Construction

**Location:** Lee Valley Road from the Taylors Quarry to the end of the road

**Date and time:** 23– 25 July 2019, 8.00 am to 6.00 pm each day. Resident access provided

## HAVE YOUR SAY



Find details for all our current consultations at [tasman.govt.nz/feedback](http://tasman.govt.nz/feedback).

### Moorings and coastal structures

**Consultation closes on 12 July 2019.**

Consultation is now open on proposed changes to the rules for boat moorings and other coastal structures in Tasman District. The rule review will lead to changes to the provisions for moorings in the Tasman Resource Management Plan, and the introduction of a new bylaw.

**Have your say:** Head to [tasman.govt.nz/feedback](http://tasman.govt.nz/feedback) for more information and to make a submission. Information is also available at Council offices and libraries.

## COUNCIL MEETINGS:

Unless otherwise stated, all meetings will be held at Council Chambers, 189 Queen Street, Richmond.



### Nelson Tasman Regional Landfill Business Unit

Tuesday 16 July, 9.30 am. Public forum

### Nelson Regional Sewerage Business Unit

Tuesday 16 July, 1.30 pm. Public forum

### Motueka Community Board

Motueka Service Centre, 7 Hickmott Place, Motueka. Tuesday 16 July, 4.00 pm. Public forum

### Environment & Planning Committee

Thursday 25 July, 9.30 am. Public forum

BRAND NEW

SHOWHOMES

3 Berryfield Drive, Richmond | 1 Malone Crescent, Richmond

Proud to be sponsoring:



**CONTACT** 03 543 9502 | 0800 42 45 46 | [www.gjgardner.co.nz](http://www.gjgardner.co.nz)

**NELSON OFFICE** 195 Queen Street, Richmond

**OPEN** Monday to Friday, 8.00am – 5.00pm

G.J. Gardner. **HOMES**



# WRITE CHOICES



Phew! We're half way through the school holidays. If you're looking for activities to get both you and the children through the rest of the holidays, we have a lot to offer. Or if you're looking for a diversion to carry you through the rest of winter, we have something for you as well.

## Creativity for everyone

Why should kids get to have all the fun during the school holidays? Motueka and Richmond libraries are both holding all ages creative spaces for everyone this month. These free inter-generational workshops are for grandparents, parents, teens, and small children – there's something crafty for everyone (preschoolers please bring an adult). Drop in to Motueka Library between 10.00 am and 11.30 am on Tuesday 16 July, or Richmond Library between 10.00 am and 12.00 pm on Wednesday 17 July to try your hand at a variety of fun craft activities.

## Winter book sale at Richmond Library

Nab a pre-loved DVD, magazine or book at Richmond Library's epic three day sale. The sale runs during our usual opening hours from Friday 19 July to Sunday 21 July. There are hundreds of items to choose from, each costing between 50 cents and \$2. Sweep up your spare change and come on down!

## Robotics workshops

Do you know a child between the ages of 9 and 14 who loves robotics and technology? Richmond and Takaka libraries are both holding robotics workshops over the coming week. Richmond Library is holding two robotics workshops on Monday 15 July, and Takaka Library is holding several robotics workshops on Thursday 18 and Friday 19 July. Bookings are on Eventbrite, and there is a cost involved. Don't miss out!

## Art workshop at Motueka Library

Just when you thought that the kids were going to have all the fun, Motueka Library is running an art workshop for adults. On Monday 22 July, from 10.00 am – 12.00 pm, Marian Painter will run a workshop on Pointillism and the major Pointillist artists. Phone Motueka Library 03 528 1047 to book your spot. Cost: \$10.

## Pyjama-clad storytime

Calling all kids! Jump into your jim-jams and join us at Motueka, Takaka or Richmond library for a pyjama-clad storytime. Takaka Library is holding theirs on Tuesday 16 July from 6.00 pm – 6.45 pm and have invited attendees to bring a soft toy for a special sleepover. Motueka Library's night-time story time is on Wednesday 17 July from 6.00 pm – 7.00 pm; and Richmond Library is holding their Pyjama Storytime on Thursday 18 July from 6.00 pm – 7.00 pm. Free. Suitable for 9 year olds and younger, with their caregiver.

## Egyptian End of Life Ritual at Motueka Library

Do you have a secret interest in mummies, Gods and death customs? Sue Clark's talk on Egyptian end of life rituals at Motueka Library might be just what you're looking for! Join us on Thursday 25 July from 10.00 am – 11.30 am for this fascinating talk. Free.

## Free computer classes at Richmond Library

Richmond Library's popular free computer classes are back! From July until September Richmond Library is holding a wide range of free computer classes. These include an introduction to Facebook for people who want to know how to use this social media mainstay; two Photobook classes for people wanting to get their photos off the camera or computer and into a book; introductions to Google, the internet, Chromebooks and Google Drive; and more! Contact Richmond Library to book your spot and for more information, phone 03 543 8500.

## Silverfish Book Group – it's free!

Come along for a meeting of the Silverfish Book Group at Takaka Library. This book group for adults meets on the last Tuesday of every month from 1.00 pm – 2.00 pm at Takaka Library. Bookings not required.

**There's much more happening across all of our libraries. For times, dates, and more information head to [tasmanlibraries.govt.nz](http://tasmanlibraries.govt.nz), or visit: [Facebook.com/tasmanlibraries/events](https://www.facebook.com/tasmanlibraries/events).**

**NELSON MARLBOROUGH WASTE**

Manage your Sump & Grease Trap Compliance with a low-cost Regular Schedule.

Give us a Freecall **0800 725 326**

Visit us Online for more info! **[www.nmwaste.co.nz](http://www.nmwaste.co.nz)**

Regular Schedule  
We will get it sorted!

NMWaste