

NEWSLINE

2 MARCH 2018
ISSUE 418



Respond now, prepare for the future with Long Term Plan

Over the past month Tasman District has been heavily affected by the forces of nature. Mapua and Ruby Bay were inundated during ex-Cyclone Fehi on 1 February.

The clean-up had barely begun when Cyclone Gita flooded communities at Riwaka, Takaka, Collingwood and Marahau, cut power to thousands of homes, and cut off roads – including the only road access in and out of Golden Bay.

Civil Defence staff from both Tasman and Nelson Councils responded to the immediate and ongoing effects of the storms. Recovery will carry on for a long time to come.

While immediate threats to people and infrastructure must be our first priority, our responsibility to plan for the future cannot be neglected. We have been working on developing a Long Term Plan for 2018 – 2028 (LTP) for the past year. The time to release a Consultation Document for public input has come, and while it may seem odd to ask our communities to put their mind to long-term challenges when many have such urgent concerns to deal with, we hope you can see the benefit in doing so.

Natural Hazards

Planning for and responding to natural hazards is an integral part of much of what we do. It was a key issue in our previous LTP (2015 – 2025) and a lot of work has gone into improving our preparedness for such events, and making sure building resilience is incorporated in our projects on an ongoing basis. That work continues and is a part of many of the major projects we will undertake over the next 10 years – such as improving stormwater flows in central Richmond, and improving the stormwater discharge system in Motueka West. A comprehensive investigation into flood mitigation approaches for the Motueka River, along with stormwater network modelling, is also in the pipeline for that community.

Long Term Plan 2018 – 2028

In this new Long Term Plan we focus on five key issues, largely based on the need to respond to anticipated population growth and provide suitable infrastructure for our growing communities, and to provide safe drinking water supplies that meet increasingly strict Government standards.

More information is contained in this issue of Newsline, on our website, and in Council offices and libraries. We'd love to hear what you think about the direction we're heading in for the next decade.

Other consultations

As part of the development of the Long Term Plan 2018 – 2028, we're also consulting on the following draft policies and documents:

- Significance and Engagement Policy
- Development and Financial Contributions Policy
- Revenue and Financing Policy
- Rates Remission Policy
- Schedule of Charges
- Policy on Remission and Postponement of Rates on Māori Freehold Land
- Revoking our Policy on Early Payment of Rates in the Current Financial Year. This is because we have not, and do not intend to offer discounts for early rates payment.

HAVE YOUR
SAY

Make a submission:

- Visit www.tasman.govt.nz/LTP
- Post to LTP Submissions, Tasman District Council, Private Bag 4, Richmond 7050
- Email to info@tasman.govt.nz

Consultation closes 5.00 pm, Thursday 5 April 2018



MORE INFORMATION AVAILABLE
AT WWW.TASMAN.GOV.TZ/LTP

Message from the Mayor and CEO

The LTP 2018–2028 Consultation Document needs your input. It sets out the key issues we would like your feedback on. The document also gives an overview of the Council’s proposals for rates, debt and quality of services.

It’s what you need to read if you want to contribute to the Council’s decision-making over the next 10 years. Because the LTP talks a lot about rates, debt and services, it’s easy to lose sight of its real purpose. All the planning, budgeting and programming is for Tasman’s communities, businesses, households and families. It’s so that everyone can appreciate the environment, have community facilities to use and enjoy, have safe and reliable water, wastewater (and many other Council) services, make a good living, have an enjoyable lifestyle and contribute to society.

The Council considers it important to support the community to develop in a sustainable manner while staying on its current financially prudent path. That means retaining the financial limits set in our LTP 2015–2025 with rate increases limited to 3% plus growth, and expenditure and net debt managed below an upper cap of \$200 million.

Several factors are driving the need to increase our expenditure and borrowing over the next 10 years. Population and housing growth has increased at a faster rate than expected, utilising much of our development-ready land. We expect growth to continue at a high level, bringing with it the demand for us to invest in new infrastructure.

With the recent contamination of drinking water in Havelock North comes a timely reminder of the important role we play in providing a safe and secure water supply. Meeting the

requirements of the NZ Drinking Water Standards is a significant issue for Tasman. We need to invest heavily in water treatment and reticulation infrastructure, and we plan to do that over the next 10 years. This includes upgrading Motueka’s water treatment plants, where we plan to recover the significant increase in costs by introducing a fixed service fee.

We are also proposing changes to the way we collect development contributions to reflect the different costs of providing infrastructure in different parts of our District.

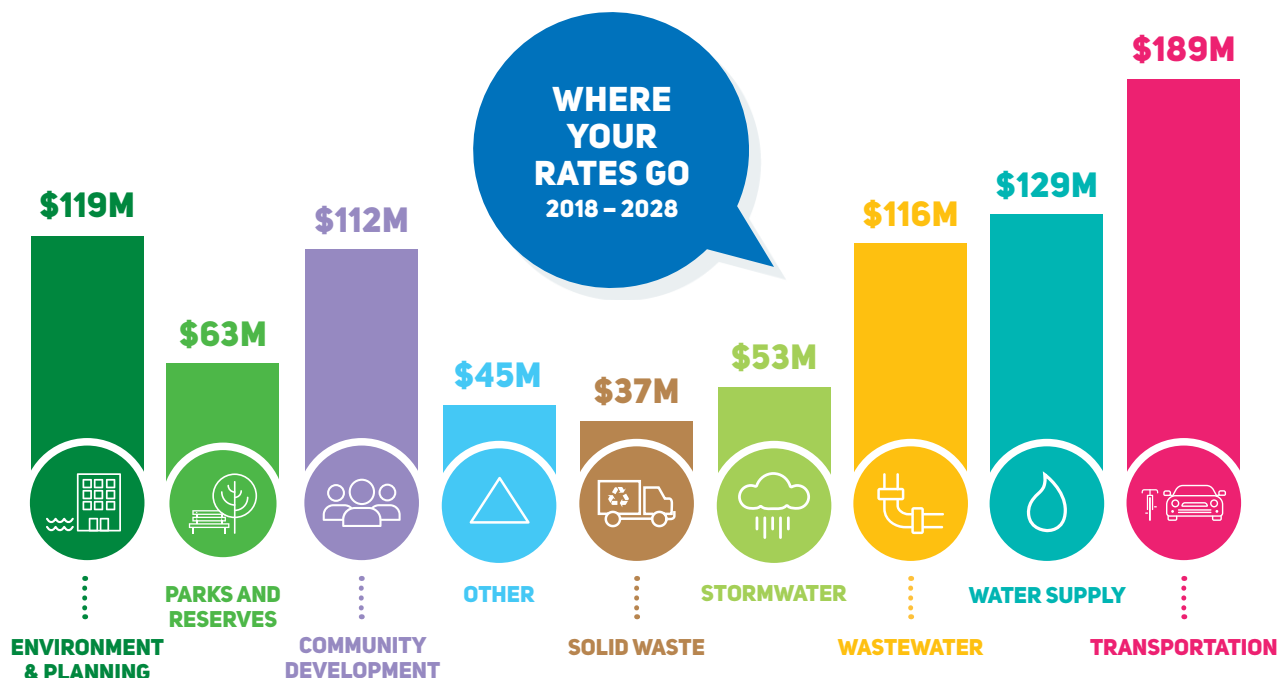
These are the Council’s priorities for the next 10 years to ensure that Tasman remains a great place to live, work and play. We would like your opinion on the key issues we have identified and the options we are proposing to address them.

You are invited to come and talk to us at public meetings throughout the District. The LTP will not be formally signed off until June 2018. Now is your chance to tell us what you think. Read the Consultation Document and supporting information, consider the issues and complete the submission form. We look forward to meeting you and reading your submissions.



Richard Kempthorne
Richard Kempthorne
 Mayor

Lindsay McKenzie
Lindsay McKenzie
 Chief Executive Officer



THE KEY ISSUES

Over the next decade there are five big issues facing our communities. The information provided here is a summary of the issues and our proposed options. More detail about the implications and alternatives of each issue can be found on our website, www.tasman.govt.nz/LTP, or at Council offices and libraries.

These key issues are:

- Issue 1: Rates Affordability and Managing Council's Debt**
- Issue 2: Growth and Infrastructure**
- Issue 3: Development and Financial Contributions Policy**
- Issue 4: Drinking Water Supply and Quality**
- Issue 5: Funding Motueka's Water Supply**

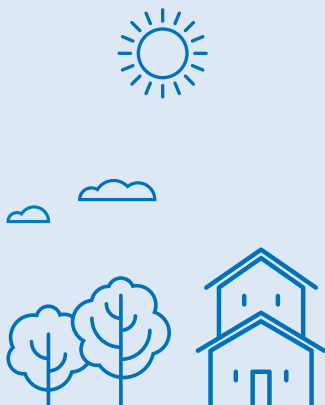


MORE INFORMATION AVAILABLE ONLINE AT WWW.TASMAN.GOV.TZ/LTP

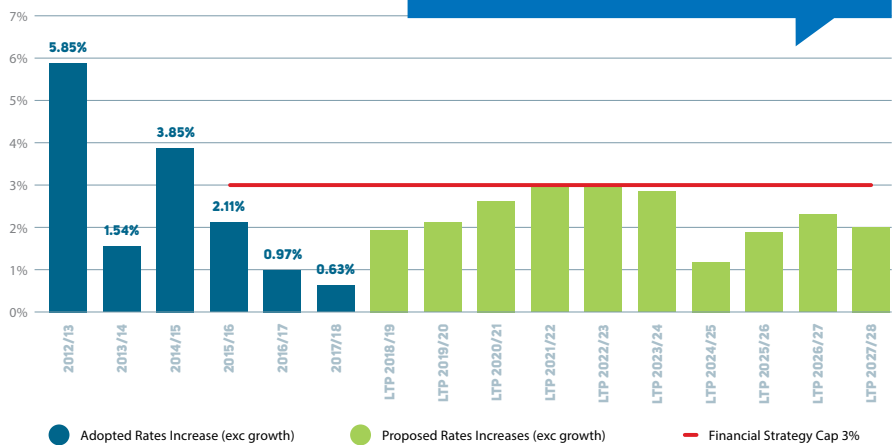
ISSUE 1: RATES AFFORDABILITY AND MANAGING COUNCIL'S DEBT

We propose to keep the self-imposed financial restraints we have been operating under since 2015:

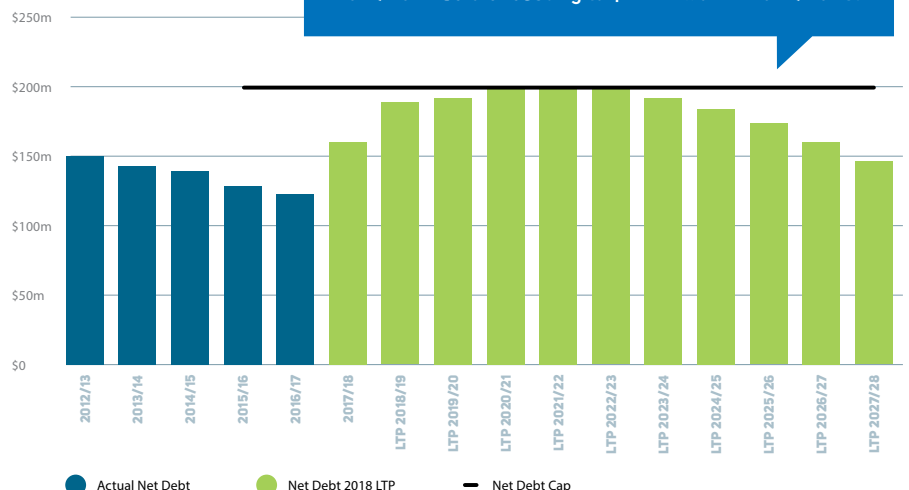
- An upper limit of three percent (3%) rates revenue increase (plus an allowance for growth) in any one year. The allowance for growth ranges between 1.08% and 1.48% per annum over the 10 years of the LTP.
- A maximum level of net debt of \$200 million.



Budgeted rates increases (Excluding growth)



Total net debt



ISSUE 2:

GROWTH AND INFRASTRUCTURE

Our population is growing fast, and we need to provide extra land and infrastructure to meet the demand.

We propose to:

- Provide land and invest in new infrastructure to support a medium/ high level of growth with a total growth investment of \$58m over 10 years.
- Upgrade and improve assets, with a total capital investment of \$157m over 10 years.

ISSUE 3:

DEVELOPMENT AND FINANCIAL CONTRIBUTIONS POLICY

We collect Development and Financial Contributions to ensure that those developing properties and who directly benefit, pay for the costs of infrastructure needed to support growth.

We propose a new catchment system for charging development contributions to better reflect the true cost of providing infrastructure:

- A three catchment system for water supply, wastewater and stormwater.
- A single, District-wide catchment for transport.
- We also propose a smaller charge for smaller homes.

ISSUE 4:

DRINKING WATER SUPPLY AND QUALITY

Part A: Capacity and Security

Our growing population needs a safe, secure supply of water.

We propose:

- Total capital investment of \$31.6m for water security and capacity projects over the next 10 years.

Part B: Drinking Water Quality

Drinking water standards, as required by Central Government, have become more rigorous in recent years. To meet the stricter standards will require significant investment in our water treatment plants and associated infrastructure.

We propose:

- Total capital investment of \$27 million for major water treatment upgrades over the next 10 years.



ISSUE 5:

FUNDING MOTUEKA'S WATER SUPPLY

We need to spend \$5.9 million upgrading Motueka's water supply to comply with the New Zealand Drinking Water Standards. To pay for the work, we propose a significant change to Motueka's targeted water rates.

We propose to:

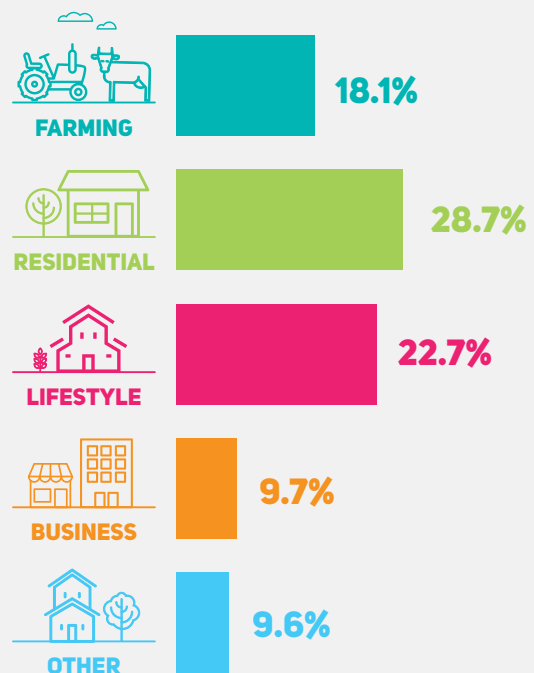
- Introduce a fixed service charge to all properties connected to the reticulated service. The service charge will increase progressively over three years.
- Continue funding the remainder of the costs through volumetric water charging.

The proposed reticulated water charges are:

- 2018/2019 – fixed \$45.05 and \$2.21/m³
- 2019/2020 – fixed \$115.94 and \$2.36/m³
- 2020/2021 – fixed \$243.19 and \$2.66/m³

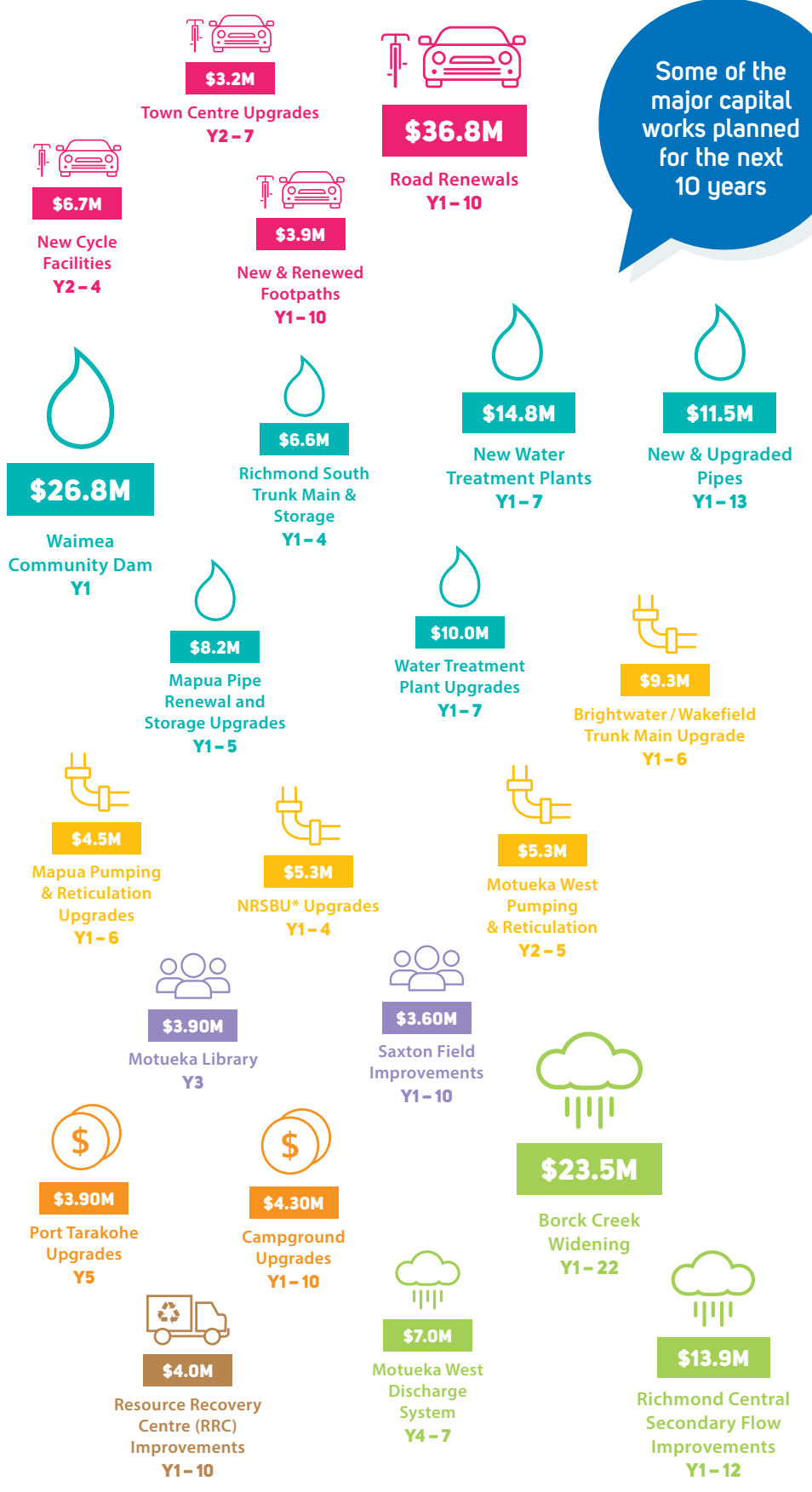
PROPERTY REVALUATIONS AND YOUR RATES

The three-yearly revaluation of Tasman District properties was carried out by Quotable Value in late 2017. Property revaluations can have an impact on your rates bill – for example, if your property value has risen by more or less than the average. The diagram shows the overall valuation from 2014 on various categories of property.

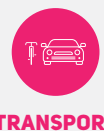
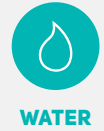


KEY INFRASTRUCTURE PROJECTS 2018 – 2028

Some of the major capital works planned for the next 10 years



KEY



YEAR 1
POPULATION 50,000

YEAR 10
POPULATION 51,000

*Nelson Regional Sewerage Business Unit



OTHER PROPOSED PROJECTS

- **Motueka Library Development** – \$3.9 million with design and planning in 2019/2020, and construction in 2020/2021.
- **Takaka to Pohara shared pathway past Motupipi School** – \$1.2 million planned for the 2019/2020 year. A financial contribution is anticipated from NZTA.
- **Regional Boat Ramp** – \$1.2m for construction between 2022 and 2024 following the development of a feasibility study.
- **Increased funding for rural gravel roads** – budget increase from \$490,000 to \$630,000 per year to improve road maintenance.
- **Improved footpaths and pedestrian facilities** – budget increase from \$180,000 to \$347,000 per year. Planned town centre upgrades will also include improvements in these facilities.
- **Saxton Field Development** – Council contribution of \$3.6 million over next 10 years for a range of projects.
- **Biodiversity Strategy** – Work will start in 2018. Priorities will be agreed with stakeholders to provide direction to our programmes to protect biodiversity.
- **Digitisation of Council Services** – \$520,000 between 2018 and 2021 to redesign Council's online services.
- **Tasman's Great Taste Trail extension from Norris Gully to Motueka** – \$1.05 million with the aim of closing the loop by the end of 2021/2022.
- **Golden Bay Community Board Special Projects** – \$10,000 per year for local projects, through an increase to the Community Board Rate.
- **Local Museum Funding** – increased funding of \$33,600 per year to increase support to the Motueka District, Golden Bay, and Murchison museums.
- **Local Information Centre Funding** – \$85,000 per year with \$40,000 for the Motueka information centre, \$30,000 for the Takaka information centre, \$15,000 for the Murchison information centre.
- **Nelson Tasman Business Trust** – funding of \$15,000 per annum instead of applying for contestable grant funding.



FOR MORE INFORMATION ON THE LONG TERM PLAN VISIT WWW.TASMAN.GOV.TZ/LTP



CONSULTATION MEETINGS

All these meetings are open to the public. There will be a presentation followed by the opportunity to ask questions and discuss the issues.

DATE (2018)	MEETING	VENUE	TIME
Monday 5 March	Brightwater Community Assn	Brightwater School Hall, Ellis Street	7pm
Monday 5 March	Richmond Rotary	Club Waimea, Queen Street, Richmond	7pm
Wednesday 7 March	Probus	Church of Christ, Corner Croucher/Darcy Streets	10.45am
Monday 12 March	Murchison & Districts Community Council	Murchison Sport Recreation and Cultural Centre, Hampden Street	1pm
Monday 12 March	Mapua & Districts Community Association	Mapua Community Hall, Aranui Road	7.10pm
Tuesday 13 March	Golden Bay Community Board	Takaka Service Centre, Commercial Street	10.30am–12pm
Wednesday 14 March	Richmond	Council Chamber, Queen Street	3–4.30pm
Sunday 18 March	Motueka Market	Motueka Market, Decks Reserve Carpark	8am – 12pm
Monday 19 March	Wakefield Community Council	St John Centre, Edward Street, Wakefield	7.30pm
Tuesday 20 March	Motueka Community Board	Motueka Service Centre, Hickmott Place	2pm
Tuesday 20 March	Moutere Hills Residents Assn	Moutere Hills Community Centre, Moutere Highway	7pm
Tuesday 20 March	Tapawera & Districts Community Council	Tapawera Community Centre, Main Road Tapawera	8pm
Wednesday 28 March	Tasman Area Community Association	Tasman School, Aporo Road	7.30pm
Tuesday 3 April	Marahau/Sandy Bay Ratepayers & Residents Assn Inc	Marahau Fire Station/ Community Hall, Marahau Valley Road	4pm

HEARING DATES

- **Wednesday 18 April 2018**, Richmond Council Chambers, 9.30am – 4.30 pm
- **Thursday 19 April 2018**, Richmond Council Chambers, 9.30am – 1 pm
- **Monday 23 April 2018**, Takaka (venue to be confirmed), 9.30am – 4.30 pm
- **Tuesday 24 April 2018**, Motueka St John Hall, 9.30am – 4.30pm



Golden Bay elects new Community Board member

A warm welcome to new Golden Bay Community Board member, Averill Grant.

Averill was elected to the board in a byelection on 17 February.

Four candidates contested the byelection, which was held following the resignation of board member Lynne Ensor.

Averill was voted onto the board with 765 votes. Voter turnout for the byelection was 38.34%, being 1,577 votes.

Byelection results

Golden Bay Community Board (1 vacancy)

GRANT, Averill	765
RHODES, Deborah	320
SHAW, Dylan	267
BARKER, Rod	218
INFORMAL	5
BLANK VOTING PAPERS	2



Helmets on – Saxton Velodrome is open!

The top of the South Island has a new home of cycling – the Saxton Velodrome, which was officially opened on Tuesday 13 February.

Saxton Velodrome is a community cycling facility – it's free for the general public to use, and open to cyclists of all ages and abilities to enjoy.

As well as the competition-standard track, there is a dedicated learn to ride area – complete with road markings and signs to simulate a road environment for beginner riders to practise on.

The velodrome provides a safe environment for children to learn, for older people to stay fit, for local racing cyclists to train for international competition, as a venue for cycling carnivals and school competitions, and for club, regional and national races. It will be the start and finish point for local community events and

fun rides. The facility will also be used by wheelchair athletes and rollerbladers.

At the official opening the velodrome was blessed by Archdeacon Andy Joseph.

Tasman Mayor Richard Kempthorne said the origins of the velodrome project dated back to 2008, when the Saxton Velodrome Trust proposed a new facility be built to replace the track at Trafalgar Park. "It's been a true community partnership."

Cr Dana Wensley said the velodrome was an outstanding community asset for all ages. "After working alongside the Saxton Velodrome Trust and seeing the hard work that has been put into this venture, it is exciting to see it come together."



Thank you to our partners in the Saxton Velodrome project

Saxton Velodrome Trust, Nelson City Council, Lion Foundation, Mainland Foundation, Rata Foundation, NZ Community Trust, Downer, Gibbons, Delta, JC Fencing, Tony's Engineering.

NEW SHOWHOMES

COMING SOON!

3 Berryfield Drive, Richmond | 1 Malone Crescent, Richmond

Proud to be sponsoring:



CONTACT 03 543 9502 | 0800 42 45 46 | www.gjgardner.co.nz

NELSON OFFICE 195 Queen Street, Richmond

OPEN Monday to Friday, 8.00am – 5.00pm

G.J. Gardner. HOMES



QUEEN STREET UPGRADE

BUILDING A VIBRANT AND RESILIENT RICHMOND



Changes to bus route

Nelson to Richmond Route

A temporary change to the bus route in central Richmond will take effect from Monday 5 March. After dropping passengers along Salisbury Road, NBus services will then turn right into Talbot Street, with a final drop off stop outside Pak'nSave.

Richmond to Nelson Route

The first pick up point for the route to Nelson will be on Talbot Street, opposite Pak'nSave.

There will be no bus stop on Queen Street for the remainder of the Queen Street Upgrade works, as the construction zone makes turning into Queen Street too difficult for buses. Once the upgrade is complete, a permanent bus stop will return to Queen Street, outside the Police Station.

Construction progress

Work is underway upgrading the underground services between Sundial Square and the entrance to the Richmond Mall carpark on Queen Street.

Key things to remember

- Queen Street is closed to vehicles from Sundial Square up to the Richmond Mall carpark entrance.
- There are intermittent closures and one-laning up the street to the Salisbury intersection.
- Footpaths remain open during the day and it's business as usual for retailers.
- Parking is available on parts of Queen Street, as well as the off-street carparks accessible from Oxford Street, Cambridge Street and McIndoe Place.



Affordable Professional Funerals

We can provide every service and option, and leave you with memories of a lifetime of love.

03 544 4400 • www.wrfs.co.nz

WAIMEA RICHMOND FUNERAL SERVICES

WINNER
Nelson Pine
CHAMBER OF COMMERCE
2016 BUSINESS AWARDS

Free commercial quotes

Putting WASTE in its Place!

CAN PLAN

www.canplan.co.nz
547 0642

NEWSLINE UPDATES



KEEPING YOU INFORMED ABOUT NEWS AND EVENTS IN THE TASMAN DISTRICT • 2 MARCH 2018

Traffic Control Bylaw – parking changes

The Council has approved changes to parking controls across the Tasman District. The changes include new time-limited parking, the installation or extension of no stopping lines and additional accessible car parks.

These changes are the result of requests from members of the community who have experienced difficulty entering and exiting their properties, safety concerns from Richmond Primary School, the need for increased visibility for pedestrians at crossing locations, the need to improve traffic movements at a number of intersections and the need to improve turning opportunities at the end of a number of cul-de-sacs.

A summary is outlined below. Full details can be found on our website.

Richmond

Warring Car Park – change eight “all day” parking spaces to “P60” car parking.

McGlashen Avenue – install a no stopping cross hatch at the intersection with McIndoe Place.

Church Street – change twelve “all day” car parks outside the school side entrance to P15 parks, 8.30am to 9.30am and 2.30pm to 3.30pm, Monday to Friday.

Brightwater

Ellis Street – change seven of the car parking spaces to P15 parking outside the shops.

Motueka

George Quay – install P180 parking restrictions along the end section of the Quay.

Kaiteriteri

Moonraker Way - remove all existing parking bay lines and extend the no stopping lines to run the length of the road. Install the words “no parking” at seven locations along the length of the road. Install two signs at the start of the road to warn drivers of the no parking restrictions along the length of the road – “No parking beyond this point. Drop-off and pick-up only.”

Golden Bay

Abel Tasman Drive – install no stopping lines directly opposite the Penguin Café and running the length of this property frontage.

Tasman District Council’s Draft Schedule of Charges 2018/2019

Statement of Proposal

Under the Revenue and Financing Policy, Council can set a Schedule of Charges to recover some costs associated with Council services. Some of these charges are set by statute, and others by Council. All charges are reviewed each year.

The Council approved the Draft Schedule of Charges for public consultation at its meeting on 22 February 2018. The Draft Schedule covers the year from 1 July 2018 to 30 June 2019.

- The full Statement of Proposal is available on our website at www.tasman.govt.nz and during normal office hours at the following Tasman District Council Offices and libraries:
- Richmond Office, 189 Queen Street, Richmond
- Motueka Office, 7 Hickmott Place, Motueka
- Takaka Office, 78 Commercial Street, Takaka
- Murchison Office, 92 Fairfax Street, Murchison
- Richmond Library, Queen Street, Richmond
- Motueka Library, Pah Street, Motueka
- Takaka Memorial Library, Junction Street, Takaka

Submissions are invited on the Draft Schedule of Charges, and must be received by 4.00pm on Thursday 5 April 2018.

Submissions may be made online at www.tasman.govt.nz/feedback or delivered to your local Tasman District Council office.

Remission of rates for homes affected by natural disaster

The Council has a policy allowing us to consider rates remissions for residential properties severely affected by a natural disaster. If your home or other buildings have been rendered uninhabitable and you cannot continue to use your land as a result of natural disaster, you may be eligible. Full details of the policy and an application form are available on our website. Head to www.tasman.govt.nz/link/rates-remission and click on Policy on Remission of Rates for Land Occupied by a Dwelling that is Affected by Natural Disaster.

Upcoming maritime events

Navigation Safety Bylaw: Temporary reservations and speed limit uplifting for maritime events.

Pursuant to provisions of the Navigation Safety Bylaw 2015, the Tasman District Council Harbourmaster has (or may soon) grant authorisations for the following known events.

Lake Rotoiti Classic Boat Show

Date: 3 – 4 March

Location: Lake Rotoiti

Sailing Regatta

Date: 11 March

Location: Mapua

Due to Navigation Safety requirements, water users not involved in these events may be excluded from defined areas during these activities. Notices will be placed at nearby access points during these events.

Further details for these and any new events may be viewed at www.tasman.govt.nz/recreation/boating-fishing/special-events-and-activities/.

Please note that the Lake Rotoiti Power Boat Club Regatta will not be held this year.

Motueka Sunday Art Market

Sunday 8 April 2018, 10.00am – 3.00pm.

Paintings, ceramics, wood, sculpture, outdoor furniture, felt/weaving.

Contact judy@printhouse.co.nz

Resource Management Act 1991

Tasman Resource Management Plan

Decisions on Amendments

Plan Change 65: Wakefield Strategic Review – Stage 2

The Council has made decisions on Change 65 to the Tasman Resource Management Plan (the Plan) and matters raised in submissions. All proposed amendments to provisions in this Change take legal effect from this date, however, in this instance, the Plan will not be amended until the Plan Change commences as operative.

Council will serve on every person who made a submission, a copy of this public notice. For further information and links to the Plan Change and decision report on submissions, please view the online version at www.tasman.govt.nz. For enquiries concerning the Plan Change, please contact Maxine Day, phone 543 8531 or email Maxine.day@tasman.govt.nz.

NEWSLINE UPDATES



KEEPING YOU INFORMED ABOUT NEWS AND EVENTS IN THE TASMAN DISTRICT • 2 MARCH 2018

The Waimea Inlet Plan out for feedback

In 2010, the Waimea Inlet Management Strategy was produced. To build on the Strategy, and the good work already underway, the Coordination Group has created an Action Plan for the Inlet.

The Waimea Inlet Coordination Group (made up of representatives from a range of organisations and groups) is now seeking your feedback on their draft Action Plan:

www.tasman.govt.nz/feedback/

Send your feedback to Anna Gerraty

Anna.Gerraty@tasman.govt.nz

9 March 2018.

Lower Queen Street Infrastructure Upgrades

Work has begun on infrastructure upgrades in Lower Queen Street needed to serve a growing residential population. Construction of a new sewer main in Headingly Lane, and a new water main in the southern side of Lower Queen Street began early this month. A major new stormwater main will also be installed from March. As the work progresses there will be some disruption to traffic flows, with the street down to one lane at times. Please follow the signage and instructions, and we thank you for your patience.

Further submissions on the Regional Pest Management Plan Proposal

Submissions are closed on the Proposed Plan, however a number of new matters have been raised by the public. The Council is now seeking further submissions in support or opposition to the matters raised. Submissions open on Monday 26 February and close 4.00 pm Monday 19 March.

Please note further submissions are restricted to matters raised in the original consultation – new matters cannot be considered.

Details and further submission forms at www.tasman.govt.nz/feedback.

Resource Consent Application

The Tasman District Council has received the following application for resource consents which is being publicly notified. This is a summary notice only. The full public notice and the application may be found online at www.tasman.govt.nz/council/media-centre/public-notice/notified-consent-NRSBU/ or navigate via the public notices link on www.tasman.govt.nz.

Copies of the application and supporting information may also be examined in the Richmond and Motueka Offices of the Tasman District Council.

Any person may make a submission on the applications in accordance with Section 96 of the Resource Management Act 1991. Submission forms are available from Council offices and on Council's website.

Applicant: Nelson Regional Sewerage Business Unit (jointly owned by the Nelson City Council and Tasman District Council).

Location: Bell Island, Waimea Estuary, 150 Bell Island Access, Best Island.

Proposal: The Nelson Regional Sewerage Business Unit treats wastewater from Tahunanui, Stoke, Richmond, Mapua, Brightwater and Wakefield, at the Bell Island Wastewater Treatment Plant (WWTP).

Their application is for the consents required to continue discharging odours to air and discharging up to 25,000 cubic metres per day of treated wastewater to the Waimea Inlet on outgoing tides, and other associated activities.

Consent Type:

Discharge to Coastal Water (Application RM171238)

Replacement for Permit NN000539V2 – Discharge of treated wastewater into Waimea Inlet from the Bell Island WWTP.

Discharge to Air (Application RM171255)

Replacement for Permit NN000541 – discharge of contaminants (primarily odours) to air from Bell Island WWTP.

Discharge to Land (Application RM171256)

Replacement for Permit RM071151 – To discharge treated wastewater to land on Bell Island by way of irrigation.

Discharge to Land (Application RM171257)

Discharge of treated wastewater to land via seepage from clay-lined facilities (ponds) at the Bell Island WWTP.

Coastal Occupation/Structure (Application RM171258)

To occupy the coastal marine area to use and maintain an existing pipe and diffuser outlet structure, required for the discharge to coastal water.

Submissions Close: 4.30 pm on Friday 23 March 2018.

Council Meetings

Agendas and Minutes for Council Meetings can be viewed on Council's website at www.tasman.govt.nz.

Nelson-Tasman Regional Landfill Business Unit Committee

Ruma Marama, Nelson City Council, 110 Trafalgar Street, Nelson. Friday 9 March 2018, 9.30 am. Public forum

Nelson Regional Sewerage Business Unit Committee

Ruma Marama, Nelson City Council, 110 Trafalgar Street, Nelson. Friday 9 March 2018, 1.00 pm. Public forum

Golden Bay Community Board

Golden Bay Service Centre, 78 Commercial Street, Takaka. Tuesday 13 March 2018, 9.00 am. Public forum

Everyone is welcome to attend our public meetings. There is a public seating area where you can observe the meeting, with many of the meetings having a 'public forum' providing an opportunity to speak to the meeting if you wish. At the beginning of ordinary meetings up to 30 minutes is set aside for public forum. Each speaker is allocated five minutes. You don't need to pre-register your intention to speak – just take your turn when invited by the chairperson. These presentations don't form part of the formal business of the meeting – a brief record will be kept of the matters raised. Any matters requiring further investigation may be referred to staff by the Chairperson.

WRITE CHOICES

FROM THE TASMAN DISTRICT LIBRARIES



Critical Point book launch at Richmond Library

Many of you enjoyed reading local author Geoff Waring's first book *The Deer Keeper*. Now Geoff is back with his second novel *Critical Point*. Set in 1980s Africa, *Critical Point* takes you on a ride into the covert world of sanction busting, weapons shipments and diamond smuggling.

Geoff is launching *Critical Point* at Richmond Library at 5.00pm on Thursday 1 March. Light refreshments will be provided. Copies of *Critical Point* will be available for purchase.

You can learn it! with Lynda.com

Learn new skills, online, in your own time – for free! Lynda.com has a wide range of online courses from creating your own time lapse video to mastering pen and pencil drawing.

And all delivered using experts in each field via high quality online video presentations free to you 24/7 with your library card and PIN.

For the month of March complete a free Lynda.com course, tell us about it and go into the draw to win a prize (terms and conditions apply).

You'll find Lynda.com on the library website e-Library e-Resources page or come to one of the drop-in sessions we are holding in March – dates and times are on our website.

Subsidised broadband with Spark Jump

Tasman District Libraries are delighted to be partnering with Spark Foundation and 20/20 Trust to bring Spark Jump to the region's libraries.

Spark Jump is a subsidised broadband initiative aimed at helping school students without broadband at home to keep up with the digital skills necessary for successful study.

Households with children up to the age of 18 and with no current broadband connection are eligible for the programme. You'll receive a modem and wireless broadband connection and pay \$10 for 30GB with no fixed contract. The modem can be topped up at any time just like you do with a pre-pay phone.

If you're interested in joining the programme contact any Tasman library to find out more.

Meet the author at Motueka Library

Local Nelson author Heather Holmes will be at Motueka Library on Friday 23 March 2.00pm to talk about her recently published book *What's In A Name*.

The adventures of Prudence Miller who, in a case of mistaken identity, finds herself at the airport with a false passport and a first class ticket is guaranteed to put a smile on your face. Heather will have books for sale for \$20.

Free computer classes at Richmond Library

Coming up in March we're continuing our computer basics classes at Richmond Library.

If you want to grow your ability to move through the online world then you may find a class here to help you. Learn to create a photo book, fine-tune your Facebook account or explore Pinterest with our free classes.

Check out the full range of what's on offer and find out how to register at the Featured Events – Stepping Up page on the library website.

Building a healthy gut

Learn about building a healthy gut with Sarah La Touche. Find out about beneficial foods for your digestive system, how to absorb nutrients and how to look and feel better. Sarah will be at Motueka Library on Thursday 29 March, 2.00 – 3.00pm.

HerStory – A Celebration of Local Women

Did you know that 2018 marks the 125th anniversary of the signing of the Electoral Act that gave all New Zealand women the right to vote?

Tasman Libraries are celebrating the occasion by bringing together photos and other materials that document the lives of women in Tasman District from 1893 to 1993. We're really interested to see how local women's experiences at home and at work, in education, sports, the arts and recreation have changed over time.

If you have original photos, letters or other unique items that show what life was like for women in the Tasman or Nelson area between 1893 and 1993 and you're happy to lend them to us to copy and publish online, please let us know. The HerStory project photos will be published on the Kete Tasman website. The HerStory project starts on Monday 12 March.

Contact the Richmond Library on 03 543 8500 or email libraryinfoservices@tasman.govt.nz.

Pickles, relish, chutneys and jam recipe swap

Do you love making pickles, relish, chutneys and jam? Do you have some great recipes you'd be happy to share?

Come along to Motueka Library on Friday 16 March at 11.00am for tastings and tips on creating preserves from fresh, flavoursome ingredients. Bring your own recipes and swap them with other like-minded cooks.

NELSON MARLBOROUGH WASTE

Give us a Freecall
0800 725 326

Make an Online Booking
www.nmwaste.co.nz

Now Hiring ...

Septic Tanks, Waste Water Systems, Water Wells & Sumps

Liquid Waste Solutions