

# NEWSLINE

22 SEPTEMBER 2017  
ISSUE 408



## Soft plastics recycling arrives in Nelson-Tasman

You can now recycle plastic shopping bags, chip packets, bread bags and other soft plastics with the arrival of the Love NZ Soft Plastic Recycling Programme in our region.

Drop-off points will be available at all New World, Countdown and Pak'nSave stores in the region.

The Love NZ Soft Plastic Recycling Programme is a voluntary, industry-led initiative where everyone involved in the life cycle of a product — manufacturers, distributors and consumers — choose to share responsibility for the best end-of-life outcome.

The programme takes all soft plastic bags including bread bags, frozen food bags, toilet paper packaging, confectionery and biscuit wrap, chip bags, pasta and rice bags, courier envelopes, shopping bags and sanitary hygiene packaging and turns them into new products.

New Zealanders currently use around 1.6 billion plastic bags in the home every year. That means 4.3 million are being thrown away every day.

Tasman Mayor Richard Kempthorne says: "It's fantastic that people in our region can now recycle soft plastics, successfully diverting much of the packaging that currently ends up in our landfill. Congratulations to the industry for taking responsibility for the full lifecycle of their products."

"Recycling of soft plastics supports our overall aim to reduce waste to landfill, which includes both recycling and reducing the use of single-use bags."

### How it works

- Collect your soft plastics – make sure they are clean and dry
- Drop into your nearest collection point (Please do not put them in your kerbside recycling bin)
- The programme will recycling them into fitness circuits, outdoor furniture, bollards and other products.

### Find out more:

Visit [www.recycling.kiwi.nz/soft-plastics](http://www.recycling.kiwi.nz/soft-plastics).

# Mayor's Message

The Motueka community, and the entire region, has experienced a significant loss with the death of Sir Patrick Goodman earlier this month. My condolences go to his family and friends, in particular, his sons Greg, Patrick and Craig.

Sir Patrick was an extremely successful businessman in an international sense, and the Goodman name will be associated with some of our most well-known food brands for a long time to come. He was a quiet giver, never seeking great publicity or attention for the contributions he made. Nevertheless, his legacy and that of the entire Goodman family can be seen in nearly every part of the Motueka community – whether it be the hospital, the Motueka Recreation Centre or the Peter Chanel Arts Centre, to name but a few. The family have made significant donations to the arts regionally as well, including to the Suter Art Gallery. Sir Patrick's services to business, the arts and the community were recognised with a knighthood, and he later became a Principal Companion of the New Zealand Order of Merit.

His business achievements are notable and, on their own, would have been a source of pride to the place he called home. What he will be remembered for in our community goes far deeper than that, though. He is described by those who knew him as a true gentleman. Humble. Gracious. Approachable. Generous. Those words tell us so much about the kind of person he was.

He will be sadly missed.

**Mayor Richard Kempthorne**



## In case you missed it...

Stay up to date with what we've been doing with this round-up of recent Council meetings and the decisions made.

### Full Council – 7 September 2017

- Agreed to convert some of the all-day parking in the Petrie Carpark and on McGlashen Avenue to P120 and P30 parking to encourage turnover and support local businesses.
- Approved funding to bring forward the second phase of constructing a stormwater network on Lower Queen Street. Partnering with developers in the area to bring the work forward reduces the cost of the project, brings efficiencies and will allow housing development to take place earlier.
- Agreed to stop an unformed legal road near the Rainbow Valley Community (RVC) in the Anatoki Valley as requested by RVC. In exchange, RVC have offered legal public access to private land beside the Anatoki River, improving public access to the river.
- Decided to fund four portable recycling containers for Murchison, Golden Bay and Kaiteriteri as a trial over summer.
- Agreed to retain the First Past the Post electoral system for the 2019 and 2022 local elections.
- Received the 2017 Communitrak Residents' Survey, giving a snapshot of residents' views of the services and facilities offered by the Council. More information on page 5.
- Received a project report on the Waimea Community Dam. More information about progress on the project is on page 3.



  
FLETCHER VAUTIER MOORE  
LAWYERS

Providing legal advice on  
property and business matters.

**Zoe Bond**  
Associate

zbond@fvm.co.nz  
265A Queen Street, Richmond  
Ph: (03) 5438301

**SURVEYING &  
RESOURCE MANAGEMENT**

- Project Management
- Resource Consents & Planning
- Subdivision Design & Management
- Land Development Engineering



  
**STAIG & SMITH**<sup>LT</sup>  
ENHANCING THE LAND

81 Selwyn Place, Nelson • Ph 03 548 4422 • [www.staigsmith.co.nz](http://www.staigsmith.co.nz)

# Dam consultation coming soon

From 21 October to 26 November we will be consulting on two key elements of the Waimea Water Augmentation Scheme – the form of governance of the proposed dam and how the Council’s financial contribution will be allocated across ratepayers and urban water users.

## Governance

Consultation on the ownership and governance arrangements for the Waimea Community Dam is required by law. The proposal is for the dam to be owned and operated by a Council Controlled Organisation (CCO), currently referred to as DamCo. The Council will appoint the majority of the directors and will hold the majority of shares (51%) and control.

## Financing

We will also ask for your feedback on the how Council’s share of the benefits and costs of the project should be paid for by different groups of ratepayers and water users. The options include a combination of urban water supply charges (fixed annual service charge and volumetric charge), targeted rates for those in the area gaining the greatest benefit, and a District-wide fixed charge.

The current proposal will see the Council fund \$26.8 million of the dam’s capital cost. Our contribution is supported by an interest-free \$10m loan from Crown Irrigation Investments Ltd, reducing the ongoing interest costs.

To make the project as affordable as possible,

we are looking at funding part of the capital costs from current surpluses and profits from our commercial activities over the next 10 years. This is consistent with our financial strategy to use surpluses to keep debt down.

## Water for the Waimea Plains

The dam is needed to provide a secure supply of water to both the rural and growing urban communities on and around Waimea Plains. Homes and businesses will face strict summer rationing if we don’t boost the current water supply. Those living and working on and around the Waimea Plains area will gain the greatest benefit from the project, and the options for funding the dam recognise this.

## Environmental/Community benefit

The dam will allow for higher flows in the Waimea River, improving the health and mauri of our river and aquifers, and making it safer and more attractive for recreation. This is in the wider public interest.

Economic analysis by Northington Partners shows the cost to our region’s economy of not having the dam is about \$1 billion in GDP over 25 years. It concludes that without a secure water supply, the productive capacity of the Plains will

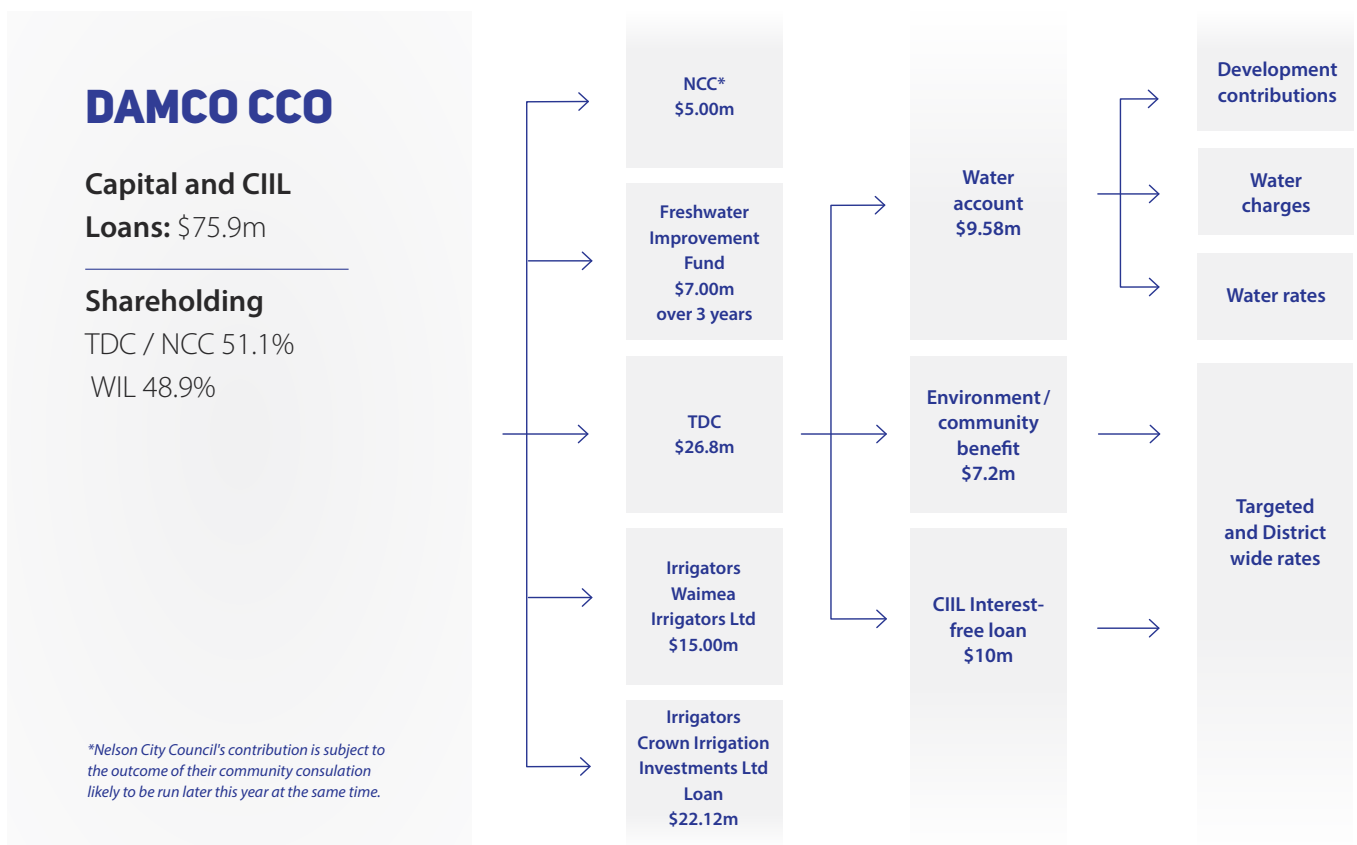
be significantly reduced. Businesses will have to reduce in size or close completely and the jobs they and their supporting industries provide will be lost. This affects our entire region – we all have a stake in a strong regional economy that provides jobs and opportunities for ourselves and future generations.

One approach being considered is for the wider community benefit to be recognised through a District-wide flat rate (that means it would be paid by everyone who owns property in Tasman District). If we were to recover the full environmental/community benefit costs of the project through a District-wide fixed charge, it would cost about \$38 per property per year.

However, we are looking at recovering some of the ‘community benefit’ costs from those living within the area gaining the greatest benefit from the project. Those within the ‘zone of benefit’ would contribute a higher amount, based on the capital value of their property.

**Want to know more about the Waimea Community Dam project?**  
Visit [www.waimeawater.co.nz](http://www.waimeawater.co.nz).

## Project funding streams:



# Early feedback guides Tasman's 10-year Long Term Plan

A new approach to consultation, in which the community's early input is helping guide the development of our Long Term Plan (LTP), is likely to see several new projects added into draft budgets for 2018 – 2028.

More than 700 people or organisations have taken the opportunity to inform the drafting of our next LTP. The feedback includes a strong youth voice, with 637 young people completing a survey to outline their hopes and ideas for the future of the District.

Traditionally, we have developed a draft LTP, then put it out for consultation before finalising it with any changes needed.

Strategic Policy Manager Sharon Flood explains: "The previous process did allow

changes to be made before the final budgets were adopted, but we know people often felt like that opportunity was limited – that much of the plan was something of a done deal. By offering people the chance to provide input before we begin drafting anything, we were able to put all the ideas into the mix at the start and gain an understanding of the community's priorities and expectations early in the process."

We received 118 submissions during the 'early input' consultation period, which ran from 13 March to 18 April, and 637 responses to a survey seeking feedback from young people, which closed on 20 August.

"Thank you to the hundreds of people who took the time to be involved. Your input means people are likely to see some new projects make it into the draft LTP for 2018 – 2028," Sharon says. "Many people expressed support for projects that were already part

of the Long Term Plan for 2015 – 2025, and these are likely to be retained in the draft LTP."

Members of the Tasman Youth Council last week met with Tasman District councillors to present and discuss the results of the youth survey.

"The survey showed the passion our young people have for the place they live," Sharon said. "Broadly speaking, the young people loved the environment, the community and the accessibility of living in Tasman District. Their major concerns included drug-taking in the community, boredom – a lack of things for young people to do, and smoking and alcohol."

Sharon said the Long Term Plan 2018 – 2028 consultation document is due to be released for a formal round of consultation in March and April 2018.

## Kaiteriteri roadworks to replace estuary sewer pipe

The roadworks currently happening on the road from Riwaka to Kaiteriteri are needed to replace a sewer pipeline under the estuary - bringing environmental benefits and catering for population growth.

The project to replace the Kaiteriteri sewer main from Stephen's Bay to Riwaka is well underway and will run through to July next year. The new sewer main will cater for future population growth in Kaiteriteri and will better manage the large population

increases during summer. As well as installing the sewer main, the contractor, Donaldson Civil is also upgrading the Stephen's Bay and Tapu Bay pump stations and associated pipelines.

The new pipeline also means that wastewater will not be piped under the estuary, avoiding any risk of leaks affecting the estuary environment.

The pipeline is being installed along the road reserve from Stephens Bay to the cycleway access at the intersection of Kaiteriteri Road and Goodall Road in Riwaka. There are also some new pipes in Stephen's Bay Road, Anarewa Crescent and Tapu Place.

While some parts of the new pipeline are being installed inside the existing pipeline, much of the line will be within the road corridor. The current pipeline will remain in the estuary. When the new pipeline becomes operational, it will be flushed and sealed to avoid any leaks. Work on the project will stop over the busy summer period and restart in February 2018.



## IS YOUR WATER SAFE?

Get the BEST from your water!  
Take the WORST out of it!

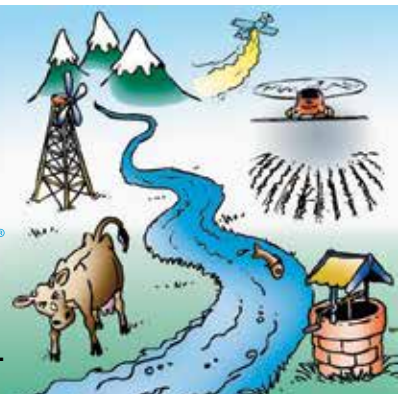
- Water Purification
- Filtration
- UV Sterilisers
- Giardia Filters
- Water Softening

WATER TESTING SERVICE  
AVAILABLE.



thinkwater.  
TASMAN BAY  
BEYOND IRRIGATION

397 HIGH STREET MOTUEKA.  
PHONE: 03 528 8888



The specialists in design, supply and installation of domestic & horticultural irrigation, drainage, effluent & septic systems, pumps, water harvesting & tanks and water treatment & filtration.

# Residents' survey results

The results of our annual residents' survey are in, and will be used to help us assess our performance and improve our facilities and services to the community.

Thanks to everyone who took part in the survey. National Research Bureau contacted 400 residents over the age of 18, living in areas across the District.

## Key findings

High levels of satisfaction recorded for:

- Recreational facilities (87% satisfied)

- Kerbside recycling (81% satisfied)
- Public halls and community buildings (79% satisfied)
- Libraries (78% satisfied)
- Lower levels of satisfaction recorded for:
  - Roads (24% not very satisfied)
  - Environmental planning and policy (23% not very satisfied)
  - Footpaths (21% not very satisfied)
  - Stormwater (19% not very satisfied)

**Overall:** This year, 69% of residents felt the Council had a good reputation (62% in 2016), while 22% didn't agree and 9% couldn't comment.

Of the 62% of residents who have contacted us in the past year, whether by phone, in person, writing, email or online, 90% were satisfied, while 10% were not very satisfied.

Newsline remains the main source of Council information for 64% of residents, with fewer people receiving most of their information from newspapers (20%, down from 28%).

## Find out more:

Visit [www.tasman.govt.nz/link/resident-survey](http://www.tasman.govt.nz/link/resident-survey) to read the full survey results.

# Get Ride Ready

Kick off a great riding season with a free expert 10-point safety check plus sharpen your riding skills with a free Ride Forever course. Book your free safety check at participating retailers:

## Motueka

- Motueka Motorcycles: 03 528 6372
- Murray Thorn Motorcycles: 03 528 9992

## Nelson:

- Nelson Motorcycle Centre: 03 548 3786, or pop in Monday – Friday, 8.30 – 4.30 pm.

- FILCO Farm & Sport: 03 547 2420
- AB's Motorcycles: 03 546 4991

## Golden Bay:

- Golden Bay Motorcycles: 027 525 9398

## Marlborough:

- Marlborough Motorcycles: 03 579 2500

Find out more: [www.rideforever.co.nz](http://www.rideforever.co.nz)  
[www.ridetolive.co.nz](http://www.ridetolive.co.nz)

# New thinking wanted for website

It's served us well, but the time has come to redesign our website. We're looking to make it work far better on mobile devices, improve the search function and make it a useful and useable resource.

## We'd love your help

Websites should be for the people who use them most, so we're asking for your help. Your responses will help us build a site that puts you at the heart of our online services now and in the future. Every answer helps us improve.

## Become a website tester

Later, as we build the site we'll need people to help us test the website. We'll need people with a range of devices, different internet speeds. People who use assistive technology such as screen readers or read-aloud systems are also very welcome. You can sign up as part of the survey. Visit [tasman.govt.nz/feedback](http://tasman.govt.nz/feedback) and share your ideas. Thanks!



Visit [rideforever.co.nz/coaching](http://rideforever.co.nz/coaching) (Promo code Spring17) to book your free course!

Offers valid until 18 December 2017 or until spaces run out.



# MAKE IT ALL ADD UP.

## We can help you with:

- Financial Management
- Monthly Reporting
- Annual Accounts
- Income Tax and GST
- Rental Properties
- Xero Certified



## GET IN TOUCH TODAY

- ✉ [flynn.perry@firstclassaccounts.co.nz](mailto:flynn.perry@firstclassaccounts.co.nz)
- ☎ 03 540 2751
- 📍 69 Aranui Road, Mapua

Kettle's on ☺



# NEWSLINE UPDATES



KEEPING YOU INFORMED ABOUT NEWS AND EVENTS IN THE TASMAN DISTRICT • 22 SEPTEMBER 2017

## Electors may demand poll on voting system

The Council has opted to retain the First Past the Post system for voting in the 2019 and 2022 local government elections. However, Tasman voters have the right to demand a poll on the electoral system if they would like that to change.

The choice is between First Past the Post (FPP) and the Single Transferable Vote (STV) systems. To be successful, 5% of eligible voters must demand the poll (that's 1827 registered electors in Tasman District) by 21 February 2018.

To be a valid, your request for a poll must:

- Specify the electoral system proposed to be used;
- Be made in writing
- Be signed by at least 5% of electors enrolled as eligible to vote at the previous triennial election of the Tasman District Council (requiring at least 1827 elector signatures)
- Be delivered to the Richmond office of the Tasman District Council, 189 Queen Street, Richmond, by 21 February 2018, for the outcome to apply for the 2019 and 2022 triennial elections. For any demand received after this date, the outcome will apply from 2022.

Each elector who signs the petition or demand must spell out their full name and eligible address.

## Do your trees hang low?

Now is a good time to check that the vegetation on your property hasn't become a nuisance. If you have a hedge, shrubs or trees that grow alongside a footpath it's up to you to make sure they don't make it hard for people to get past – including those with prams or mobility scooters.

## New parking time limits in Richmond

Time restrictions will be imposed on 40 carparks in the Petrie Carpark, as well as on several sections of McGlashen Avenue, to reduce the pressure on parking in Richmond town centre.

The changes are:

- 40 parking spaces in the Petrie Carpark (behind Richmond Library) become P120
- 1 space in Petrie Carpark designated for electric vehicles
- 1 space in Petrie Carpark next to the entry ramp for the Richmond Library designated for mobility card holders
- Several sections of McGlashen Avenue become P30 and P120

The new restrictions are intended to increase turnover in the premium parking spaces in the Richmond town centre, freeing these up for shoppers and short-term visitors. The changes will come into effect as signage is installed.

## Are you ready to play?

The South Island Masters Games is back in Nelson from 4 – 8 October this year. Both competitive and social players are catered for. A highlight for many are the themed social functions. All activities are assured to make you feel fitter and healthier and think of all those challenges that can be achieved.

Register online at [www.simasters.com](http://www.simasters.com)

## Resource Consents

The Council has received an application for resource consent, which has been publicly notified in The Nelson Mail. The application and supporting information may be examined in the main office of the Tasman District Council (Richmond) and the Motueka Office. The full public notice may be found online at Council's website

([www.tasman.govt.nz](http://www.tasman.govt.nz)). Any person may make a submission on the application in accordance with Section 96 of the Resource Management Act 1991. Submission forms are available from Council offices and on Council's website. Please note that the following is an abridged advisory notice only.

**Applicant:** S B Drummond

**Location:** 34 Teapot Valley Road, Waimea West

**Consent Type, Application Number and Proposal:**

Subdivision Consent (Application RM170659)

To subdivide Lots 1, 2 and 28 DP 17701 (CFR NL11C/943) comprising 29.57 hectares to create four separate titles as follows:

- Lots 1-3 of 10.76 ha;
- Lot 4 of 7.28 ha;
- Lot 5 of 6.08 ha;
- Lot 6 of 5.43 ha.

The site is within a Rural 2 Zone as defined in the Tasman Resource Management Plan.

**Submissions due: 4.30 pm on Friday 6 October 2017**

All of your Tasman District Council information at: [www.tasman.govt.nz](http://www.tasman.govt.nz)

WINNER  
NelsonPine  
2016  
BUSINESS  
AWARDS  
Commercial  
Recycling  
Putting WASTE in its Place!  
**CAN  
PLAN**  
www.canplan.co.nz  
547 0642

## ELLIS STREET IMPROVEMENTS

### We need your bright ideas!

What do you think would make Ellis Street safer and more attractive for the community? Join us for a conversation about the future of Ellis Street: Brightwater School, Wednesday 20 September 2017 from 3.00 pm to 6.00 pm.



# NEWSLINE UPDATES



KEEPING YOU INFORMED ABOUT NEWS AND EVENTS IN THE TASMAN DISTRICT • 22 SEPTEMBER 2017

## Motueka community asked to rank special projects

The Motueka Community Board is asking people to help identify which local projects should take priority in the coming year. Complete the Motueka Special Projects survey online at [tasman.govt.nz/feedback](http://tasman.govt.nz/feedback) before Friday September 29. Paper copies are also available at Motueka Service Centre. Alternatively, rank the projects below from 1 (highest priority) to 9 (lowest priority) and drop it in at the Motueka Service Centre.

- Courtney Street footpath (\$12,155.50)
- Thorps Bush picnic area enhancement (\$10,000)
- Playground upgrades (\$10,000)
- Motueka Arts Council sculpture (\$10,000)
- A community accessible defibrillator (\$3,000)
- Outdoor exercise equipment (\$10,000)
- Enhancement of George Quay (\$10,000)
- North Park BBQ (\$7,000)
- Enhancements for Marahau (\$10,000)

## Upcoming Intersection Upgrade – Clover Road, Brightwater

The NZ Transport Agency advises that contractors will begin work to upgrade the intersection of Clover Road, and SH6 in Brightwater from Monday 18th September. It follows on from the recent undergrounding of services, and will include the extension of a culvert to allow for road widening, and the installation of right turning bays on the highway. The upgrade is expected to take 12 weeks, weather permitting.

“While two way traffic will continue for most of the time, motorists are advised to take care, slow down to the temporary speed limits, and allow for minor delays,” says Top of the South, Transport System Manager, Frank Porter. “Traffic will be able to enter and exit Clover Road but people may need to allow extra time to be guided through by work crews. If you have any questions about this work please email [chris.nally@nzta.govt.nz](mailto:chris.nally@nzta.govt.nz)”

## Flush your taps

As all of our drinking water supplies are naturally ‘soft’, it means they can absorb minute amounts of heavy metals such as lead, nickel and copper. The Ministry of Health recommends that for these types of water supplies known as ‘Plumbosolvent’, people should not drink the first mugful of water if their tap has not been used for several hours. Instead, people should run the tap for a second or so, which will quickly flush away any water that has become contaminated with lead or any other metals from the plumbing fittings. You should also never fill your kettle from your hot water tap, as it could have high levels of copper in it (from your hot water cylinder). Visit the Ministry of Health website: [www.moh.govt.nz](http://www.moh.govt.nz) – search for ‘plumbosolvency’.

## Council Meetings

Agendas and Minutes for Council Meetings can be viewed at [www.tasman.govt.nz](http://www.tasman.govt.nz).

### Full Council

Council Chambers, 189 Queen Street, Richmond. Thursday 28 September 2017, 1.30pm. Public forum

### Saxton Field Committee

Saxton Field Netball Pavilion. Date to be confirmed. Public forum

### Engineering Services Committee

Council Chambers, 189 Queen Street, Richmond. Thursday 5 October 2017, 9.30 am. Public forum

Everyone is welcome to attend our public meetings. There is a public seating area where you can observe the meeting, with many of the meetings having a ‘public forum’ providing an opportunity to speak to the meeting if you wish. At the beginning of ordinary meetings up to 30 minutes is set aside for public forum. Each speaker is allocated five minutes. You don’t need to pre-register your intention to speak – just take your turn when invited by the chairperson. These presentations don’t form part of the formal business of the meeting – a brief record will be kept of the matters raised. Any matters requiring further investigation may be referred to staff by the Chairperson.

## 24 HOUR ASSISTANCE: PHONE YOUR LOCAL SERVICE CENTRE

<b>RICHMOND</b>	03 543 8400
<b>MURCHISON</b>	03 523 1013
<b>MOTUEKA</b>	03 528 2022
<b>TAKAKA</b>	03 525 0020

## HOUSE AND LAND PACKAGES AVAILABLE



\* Richmond Showhome 4 Stedyl Crescent  
OPEN Everyday 1.00pm–4.00pm



Proud to be sponsoring

Nelson Cancer Society  
Relay for Life



Phone 03 543 9502  
0800 42 45 46 [www.gjgardner.co.nz](http://www.gjgardner.co.nz)

NELSON OFFICE 195 Queen Street, Richmond  
OPEN Monday to Friday 8.00am–5.00pm

**G.J. Gardner.** HOMES

# COMMUNITY RELATIONS



## The First Taste

Enjoy a delicious range of food from around the globe and check out the fresh face of Queen Street. Live entertainment and activities. Saturday 14 October, 11.00am – 2.00pm on Queen Street between Cambridge Street and McIndoe Place.



## Creating an Age-Friendly Tasman

We want Tasman to be a great place to live for people of all ages. As part of our planning for the next 10 years, we're asking our older residents how we can make it easier for them to get out and about, participate in social activities or employment, access housing and achieve good health.

The feedback will be used to inform the drafting of our Long Term Plan for 2018 – 2028, and to develop an Age-Friendly Policy. Come along to one of the community drop-in sessions, or fill in an online survey, to get involved.

### Community drop-in sessions

Richmond – Monday 25 September, 10.00 am – 12.00 pm, Council Chamber, Tasman District Council offices, Queen Street.

Motueka – Tuesday 26 September, 10.30 am – 12.30 pm, Motueka Recreation Centre, Old Wharf Road.

Murchison – Monday 9 October, 10.30 am – 12.30 pm, Murchison Sport, Recreation & Cultural Centre, Hampden Street.

Fill in the survey:

Visit [www.tasman.govt.nz/feedback](http://www.tasman.govt.nz/feedback)

## Summer Events Guide

The Summer Events Guide is back again this summer, showcasing events happening across the Nelson-Tasman region. To be considered for inclusion in the guide, event organisers must ensure events are listed on It'sOn no later than Sunday 1 October. To list your event go to [www.itson.co.nz/organisers](http://www.itson.co.nz/organisers) If you are interested in paying for advertising space in the Guide, contact [judy@printhouse.co.nz](mailto:judy@printhouse.co.nz), Ph 03 543 9480.

## Adventure Awaits on Tasman's Great Taste Trail

Join the Kiwi Guardians on the hunt for fun and adventure in the great outdoors. The Toyota Kiwi Guardians programme encourages kids to explore and learn about the environment - it is like a big treasure hunt! Check out the DOC website for more information [www.doc.govt.nz/kiwiguardsians](http://www.doc.govt.nz/kiwiguardsians) and to download your adventure map. Sunday 15 October, 10.30am – 12.30pm at Sandeman Reserve, Sandeman Road, Richmond. Register online at [www.tasman.govt.nz/recreation/events/walk-series](http://www.tasman.govt.nz/recreation/events/walk-series)

## Will's Gully Walk

Sunday 24 September 2017, 10.00 am – 12.30 pm. Join us for a guided walk up Jimmy Lee Creek and down Will's Gully. You will be amazed by the volunteer effort that has gone into making this area so beautiful.

Visit [www.tasman.govt.nz/recreation/events/walk-series](http://www.tasman.govt.nz/recreation/events/walk-series) for more information and to register Ph. 543 8400.



## Tasman parks become magical playgrounds

A virtual reality playground can be found in parks throughout the District until mid-2018.

From 1 July, children and families can play Magical Park at six parks around the District.

### Where can I play?

Magical Park is aimed at 6 – 11 year olds and will be available at the following parks:

- Ben Cooper Park, Richmond: July – October 2017
- Bill Wilkes Reserve, Richmond: July – October 2017
- Decks Reserve, Motueka: November 2017 – February 2018
- Mapua Recreation Reserve: November 2017 – February 2018
- Faulkners Bush, Wakefield: March – June 2018
- Lord Rutherford Park, Brightwater: March – June 2018

Visit [www.tasman.govt.nz](http://www.tasman.govt.nz) to find out more.

## Second-Hand Sunday is 8 October – Registrations open

What is Second-Hand Sunday? It's a way to re-home household goods – anything from chairs, books, clothing or left over-bits and pieces from building projects. Please don't put out food, dangerous goods like faulty electrical equipment, or chemicals.

How do I participate? To offer items, simply complete the online registration form at [www.tasman.govt.nz](http://www.tasman.govt.nz) (search phrase "second-hand sunday").

Keeping our Homes, Businesses & Public Places clean & safe

## NELSON MARLBOROUGH WASTE

### Manage Sump & Grease Trap compliance with a low cost regular schedule ...

Give us a Freecall  
**0800 725 326**

Make an Online Booking  
**[www.nmwaste.co.nz](http://www.nmwaste.co.nz)**

✓ Compliance ✓ Within Budget

Organised  
Ethical  
Local