

Keeping you informed about news and events in Tasman District



Wharariki Beach

Rare bird returns **P.3**

Your new recycling calendar **P.3**

Regional landfill consultation planned **P.8**

There is smoke without fire...

If your woodburner is getting a workout this winter, keep an eye on what's coming out your chimney and help keep the air clean and safe.

The secret to keeping smoke to a minimum is a well-maintained burner, dry wood and a hot fire. That means getting your fire going with light wood and plenty of air so the firebox comes up to temperature. After that the air can be reduced but not completely closed down. The fire should remain burning bright.

Keep your fire going at the right rate by adding dry wood as needed – and have a look at what's coming out your chimney every now and then. An efficient fire should not produce much smoke.

The main cause of winter air pollution is household fires, so it's important to keep fires burning cleanly to reduce smoke.

Results from our air quality monitoring station show Richmond has already breached the national air quality guideline twice this winter. Clean air is fundamental to our well-being – air pollution can have a serious effect on people's health, particularly those with respiratory and heart conditions, the very young and elderly.



LOOK FOR THE GOOD WOOD TICK

Burning firewood with a moisture content of more than 25% is banned in Tasman and Nelson.

Good Wood Scheme participants have agreed to supply Nelson and Tasman householders with either:

- Seasoned firewood, suitable for immediate use during winter, or
- Green (unseasoned) firewood delivered sufficiently far in advance of winter so that, if properly stored by the user, it will be seasoned ready for use in the winter months.

A list of Good Wood suppliers can be found at tasman.govt.nz/link/good-wood.

Outdoor burning on farms and orchards can also cause air quality issues, and permits from the Rural Fire Authority are required. You can find good practice guides for outdoor burning and woodburners on our website.

FIND OUT MORE

If you're interested in learning more about air quality monitoring and results, environmental monitoring website Land, Air, Water Aotearoa (LAWA) now shows real-time data on PM₁₀ (pollution particles) levels for towns throughout New Zealand, including Richmond. Visit lawa.org.nz. For more information on Tasman's air quality and monitoring results you can also head to our website, tasman.govt.nz/environment/air/air-quality.

WHAT IS LAWA?

Land, Air, Water Aotearoa was launched in 2014 and is a collaboration between New Zealand's 16 regional and unitary councils (including Tasman District Council), the Cawthron Institute, Ministry for the Environment and has been supported by the Tindall Foundation.

LAWA reports environmental information from nearly 3000 monitoring sites around New Zealand, allowing those who have an interest in our air, waterways and beaches to understand more about the current state of these environments.

Mayor's Message

We've now passed the shortest day and can look forward to longer days and the countdown to Spring.

The months are passing so quickly and this has given me cause to reflect on what we have achieved this year. The Annual Plan 2016/2017 is now complete and passed. There is a proposal before the community for a joint venture with Nelson City on solid waste and shared use of joint landfill, which is a milestone in our co-operative relationship. With the end of the financial year upon us we will soon be turning our mind to the annual report. The forecast is that we will have performed better than planned, especially financially.

The thing that we have experienced through all of this is significant growth within our district, which shows no sign of slowing down. We have adequate zoned residential land, but will need to stay aware of where future growth will occur and we will need to preserve our high quality land for high value production. Enabling significant growth, like that we have experienced within our district, presents a challenge in funding adequate water and roading infrastructure. It has been a great achievement for this Council and our community and we are delighted to have the coming year's total rates income just under 1% and to have achieved this while also having a significant reduction in debt.

The future looks bright; it's fantastic what you can achieve together when you commit your time and dedication to making your community a better place.

Mayor Richard Kempthorne

Editor's footnote: as we are soon to enter the pre-election period, consistent with the Auditor General's guidelines this will be the last Mayor's Forward Message Newsline will be publishing during this triennium.



Golden Bay community fundraising given Lotteries boost

The group tasked with raising the community's share of funding for the Golden Bay Community Recreation Facility is well on the way to meeting its target thanks to a \$440,000 Lotteries grant.

Golden Bay Shared Recreation Facility group chairman Dean Lund said the grant is believed to be the largest amount ever allocated to Golden Bay by the Lottery Grants Board.

"This has endorsed the project vision to provide present and future generations with a community facility that encourages sport, recreation and social events."

Tasman Mayor Richard Kempthorne congratulated the group on the fantastic fundraising effort.

"The group has worked extremely hard to gain the funding they need to cover the community's share of the costs of the new facility. As well as this grant from Lotteries, a large amount of money has come directly from the community and this shows the strong support in Golden Bay for the centre and what it will offer."

Under the 80:20 funding agreement, the community of Golden Bay must contribute \$800,000 to the \$4 million project, as well as fit out costs. The remaining \$3.2 million is funded by the Council.



TASMAN'S TOP TREE TEAM

Nelmac Tree Care is #1 in the top of the south.

Call us for a free quote for: canopy reduction, tree removal, pruning, hedges & all tree work.

0800 635 622

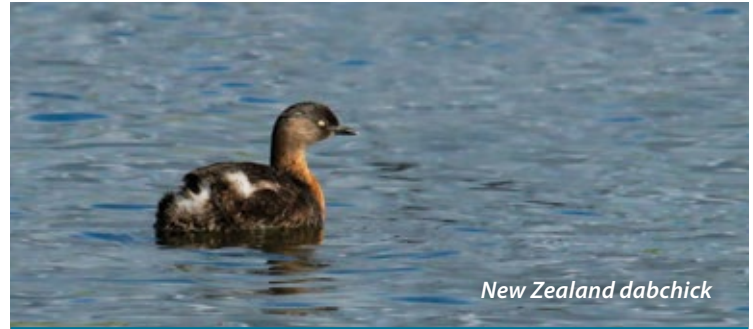


Rare bird returns – have you spotted one?

Keen bird watchers are on the hunt in Tasman for the New Zealand dabchick – a nationally vulnerable aquatic diving bird that disappeared as a breeding species from the South Island for more than 60 years.

In 2012 the first breeding pair seen since the 1940s was recorded near Takaka. Several have been spotted in this region since then.

The New Zealand Ornithological Society is now trying to get a better idea of the numbers and distribution of these birds, and needs your help. They are relatively small, brown-black with a white rump. It feeds mainly by diving. Recent sightings have been made in Motueka, Mahana and the Nelson Haven.



New Zealand dabchick

REPORT A SIGHTING: Contact Willie Cook by emailing william23@slingshot.co.nz.

Planting day at Dominion Flats

Help out with the restoration of Mapua's Dominion Flats by heading down to the community planting day on Sunday 17 July.

Bring a spade and gloves and wear suitable clothes and gumboots. Tea and coffee will be provided. The planting will go ahead, rain or shine.

THE DETAILS:

When: 10 am, Sunday 17 July

Where: Dominion Flats, intersection of Ruby Bay Bypass and Mapua Drive

Download or pick up your new recycling calendar

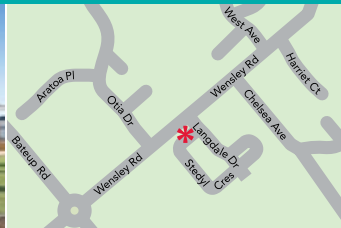
If you missed the new recycling collection calendar in the last edition of *Newsline*, don't be alarmed. You can download a copy from our website: www.tasman.govt.nz/recycling or pick one up from Council service centres or libraries.



SHOWHOME EXTRAVAGANZA



* 2 Stedyl Crescent, Richmond



* SHOWHOMES

2 & 4 Stedyl Crescent
Richmond
OPEN Monday to Friday
11.00am–4.00pm
Saturday & Sunday
1.00pm–4.00pm



* 4 Stedyl Crescent, Richmond

G.J. Gardner Homes are acknowledged for their innovative design concepts. Our designers are continually coming up with fresh ideas and creative living plans. Here's your chance to view some of their latest ideas incorporated into a stunning new designer showhomes. Design innovation is just one more reason why more people build with G.J. Gardner Homes every year than any other builder.

Phone 03 543 9502
0800 42 45 46 www.gjgardner.co.nz

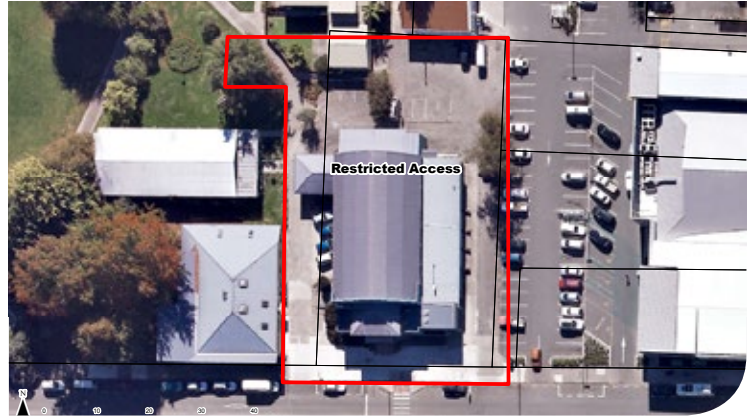
NELSON OFFICE 195 Queen Street, Richmond
OPEN Monday to Friday 8.00am–5.00pm

G.J. Gardner. HOMES

Motueka Memorial Hall temporary access restrictions

Access to the Memorial Hall driveway and car parks will be restricted until 8 July while driveway improvements are carried out. This work is weather dependent.

The restrictions will affect vehicles and pedestrians, so please be aware and pay attention to the contractor's signs. You may need to park elsewhere and access buildings near the hall by a different route to usual. We apologise for any inconvenience this may cause. Please contact Tasman District Council's Reserves and Facilities department for any queries, (03) 528 2022.



Last days to have a say on Moturoa/Rabbit Island plan

We know you love Moturoa/Rabbit Island – but have you let us know what you think of the plan for its future yet?

We're entering the last week of consultation on the Draft Moturoa/Rabbit Island Reserve Management Plan, and we want to know if you think we've got it right.

Head to our website to check out the proposals and make a submission: tasman.govt.nz/feedback.

You can also view the draft plan at Council service centres and libraries.

Submissions close on Friday 8 July.

Motueka Channel markers adjusted

Recent storms have resulted in changes to the sandbar at the entrance to Port Motueka and caused marker buoys to shift in the Motueka Channel.

As a result, the Harbourmaster has readjusted the buoys and updated the Motueka Channel Local Knowledge Guide for the area.

If you are boating in this area, please keep yourself up to date with the position of these markers and conditions in the channel.

You can download a copy of the Local Knowledge Guide from the Port Motueka page on our website, tasman.govt.nz/link/port-motueka. Alternatively, pick one up from the Port Motueka launching ramp.

IS YOUR WATER SAFE?

Get the BEST from your water!
Take the WORST out of it!

- Water Purification
- Filtration
- UV Sterilisers
- Giarda Filters
- Water Softening

WATER TESTING SERVICE AVAILABLE.



thinkwater®
TASMAN BAY
BEYOND IRRIGATION

397 HIGH STREET MOTUEKA.
PHONE: 03 528 8888



The specialists in design, supply and installation of domestic & horticultural irrigation, drainage, effluent & septic systems, pumps, water harvesting & tanks and water treatment & filtration.

PUBLIC NOTICES

Air quality exceedance

We're required to publicly notify exceedances of the National Environmental Standards relating to Air Quality. The Richmond Airshed PM₁₀ concentrations exceeded an average 24-hour concentration of 50 micrograms per cubic metre (µg/m³) on the following dates:

Day	PM ₁₀ concentration measured (µg/m ³)	Extent of PM10 exceedance (µg/m ³)	Location at which exceedance was measured
3 June 2016	57	7	Richmond Central
17 June 2016	66	16	Richmond Central

The total number of exceedances to date this season is two. The total for last winter was three. More information is available online: www.tasman.govt.nz/environment/air/air-quality.

Dog registration

If you have a dog aged three months or older you need to register it. The fee for dogs that have not been registered by 1 August will increase by 50% on top of the standard urban or rural registration fee. If you have just moved here or have not registered your dog before please call the Council on Ph. 03 543 8400.

Rating Information Database

Tasman District Council's Rating Information Database is available for inspection (without fee) at Council offices during normal opening hours. The database provides the rates for the current year (2015/16) and those proposed for the next. Go to tasman.govt.nz then enter the property street address to view the current year's rating information and then click on "Next Year – 2016/17" to see next year's.

While the Rating Information Database contains a record of all information required for the setting and assessing of rates, the information will not include any subdivisions/boundary adjustments/amalgamations that were completed after 6 May 2015.

Please note legislation does not allow the names of owners and ratepayers in the Rating Information Database.

Notice given under Local Government (Rating) Act 2002.

PUBLIC NOTICES

Trees to be felled on Mapua Drive

A large group of tall pines and blue gum trees on Mapua Drive will be felled after an inspection identified them as being a safety risk. The felling, which includes trees lining both sides of Mapua Drive near the exit from State Highway 60, is expected to take three to four weeks and may lead to short traffic delays. Early-morning traffic should not be affected, but people travelling on that route during the day are advised to allow a little extra time, as vehicles will be stopped for short periods while a tree is being felled. After a pine fell on the road in April, other trees in the area were inspected and found to be under stress and at risk of falling. To ensure public safety we therefore have to remove the trees. Anyone with enquiries about the felling can contact the Council by calling Ph. 03 543 8400.

Apply for a Community Grant online

Are you planning a great community event or project – but need a little help to make it happen? We may be able to help.

Applications for our Community Grants are open, and there is funding available for Tasman-based projects that meet a community need, join communities together and have community support. Priority is given to projects that can show financial support from other sources as well. We're moving to a simplified, online-only application form this year. To help you get started, we will be running sessions at our local libraries to show you how to fill in the online form. Details of these will be posted on our website and publicised in future editions of Newsline.

Applications close on 31 July 2016.

Grants are available for projects that fit into the following categories:

- Arts/culture/heritage/museums
- Environment
- Festivals and events
- Emergency services
- Youth and children
- Sports and recreation facilities.
- Social services

Apply online:

Visit tasman.govt.nz/link/grants to fill in the online application form.

For more information:

Visit tasman.govt.nz/link/grants or email Community Partnerships Coordinator Mike Tasman-Jones, mike.tasman-jones@tasman.govt.nz.

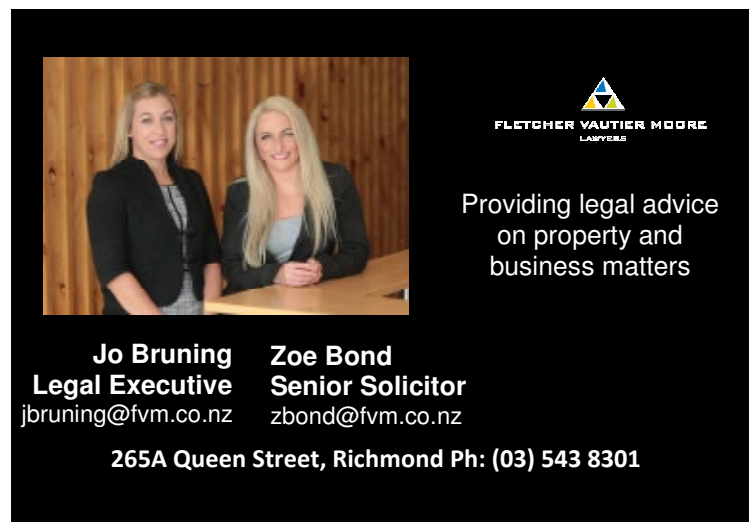


SURVEYING & RESOURCE MANAGEMENT

- Project Management
- Resource Consents & Planning
- Subdivision Design & Management
- Land Development Engineering

STAIG & SMITH LTD
ENHANCING THE LAND

81 Selwyn Place, Nelson • Ph 03 548 4422 • www.staigsmith.co.nz



FLETCHER VAUTIER MOORE
LAWYERS

Providing legal advice on property and business matters

Jo Bruning
Legal Executive
jbruning@fvm.co.nz

Zoe Bond
Senior Solicitor
zbond@fvm.co.nz

265A Queen Street, Richmond Ph: (03) 543 8301

Newslineupdate



join our community:
Twitter • Facebook • Website

PUBLIC NOTICES

Roadside spraying for vegetation control in rural areas and registration of non-spray areas

Tasman District Council's roading maintenance contractor is responsible for vegetation control within the road reserve. This includes the use of knockdown, residual and brushweed herbicides to remove vegetation growing in the roadway and around street furniture. The contractor is also responsible for control of pest plants and other noxious weeds such as gorse, fennel, hemlock, blackberry, broom, bracken, purple pampas grass and box thorn.

'No spray' registration option for residents

Residents can request that their rural property frontage not be chemically sprayed and instead undertake the vegetation control themselves. On approval, the Council's contractors will mark the no spray area with red marker pegs.

Rural residents who choose the "no spray" option must control the vegetation growth along their property frontage to ensure:

- Road users are not impeded and all roadside signs and markers are clearly visible; and
- Vegetation height will not exceed 300mm; and
- Any stormwater drainage ditches need to be kept clear of excess vegetation; and
- At intersections vegetation must be kept well clear to ensure good sight lines for traffic using the intersection.

An application form for your property to be included on the no spray database is available on the Council's website – www.tasman.govt.nz – search for 'no spray'.

Opus International Consultants administer a separate vegetation control programme for the state highway network on behalf of the New Zealand Transport Agency.

PUBLIC NOTICES

Roadside spraying



Contractors employed by the New Zealand Transport Agency undertake an ongoing vegetation control programme to ensure that roadside vegetation does not affect the safety or operation of the region's state highway network.

This programme includes the spraying of chemical herbicides including the following active ingredients: Glyphosate, Metsulfuron, Terbutylazine and Triclopyr. Persons wishing to register their property as a 'no-spray' zone, which requires a commitment to maintain a property's highways frontage to specifications provided by NZTA, may do so by contacting Lea O'Sullivan or Donna Hills on Ph. 03 548 1099 or at Opus International Consultants, Private Bag 36, Nelson.

Are you planning a community art project?

Creative Communities provides funding to support community involvement in the arts, whether that's music, theatre, festivals, mural painting, outdoor sculptures, art in public spaces, kapa haka, singing, art workshops or something else.

If you have a great community arts project needing some dollars to make it happen, the Tasman Creative Communities Scheme may be just what you're looking for. There are three rounds of applications each year. The next round closes on 10 July 2016. For projects starting after 15 August, the applications close on 10 November.

There is \$39,000 allocated per annum. Average allocations are \$1,000.

For application forms visit www.tasman.govt.nz/link/creative-communities or call Mike Tasman-Jones Ph. 03 543 8403 for further information.

Keep up with the Tasman District Council Lowdown

Hear news items from the Council about current public consultations, Council and community projects, topical interviews, plus a range of notices about activities and events in the Tasman District. Tune in to Fresh FM on Monday 11.40 am or Wednesday 3.40 pm. Nelson-Tasman 104.8, Golden Bay 95.0.



RICHMOND MOTEL & HOLIDAY PARK

29 Gladstone Rd, Richmond • 03 544 5218
0800 250 218 • richmondmotel@xtra.co.nz
BOOK ONLINE: www.richmondholidaypark.co.nz

Swimming Pool • Playground • Free WiFi
Sky TV • Walk to Richmond Mall • Set on 2 acres
Short drive to Saxton Sports Field

Tariff for 2 persons (free WiFi):
Studio, 1, 2 & 3 bedroom motels \$95 – \$160
Cabins \$55 – \$95 • Power sites



RESOURCE CONSENTS

The Council has received applications for resource consents as detailed below, which have been publicly notified in The Nelson Mail. The applications and supporting information may be examined in any Council office. The full public notice may be found online at Council's website (www.tasman.govt.nz).

Any person may make a submission on the applications in accordance with Section 96 of the Resource Management Act 1991. Submission forms are available from Council offices and on Council's website. Please note that the following are abridged advisory notices only.

Applicant: Anthony Brown & Joanne Smart

Location: 102 Carlyon Road, Mahana

Consent Type, Application Number and Proposal:

Subdivision Consent (Application RM160225)

To subdivide Rural 2 zoned land contained within a property legally described as Part Lot 16 and Part Lot 18 Deposited Plan 626 (CFR NL11B/50) to create two allotments.

- Lot 1 of 2.55 hectares and containing the existing dwelling and accessory buildings with existing access from Carlyon Road.
- Lot 2 of 2 hectares with a building site, and a new vehicle crossing is proposed onto Carlyon Road.

Submissions due: 4.30 pm on Monday 4 July 2016.

Applicant: L R & S A Powell

Location: 233 Aniseed Valley Road, Aniseed Valley

Consent Type, Application Number and Proposal:

Subdivision Consent (Application RM160002)

To subdivide Rural 2 zoned land to create two allotments:

- Lot 1 of 2.16 hectares;
- Lot 2 of 15.66 hectares (with the existing dwelling).

Both allotments will gain access by an existing formed right of way from Aniseed Valley Road.

Discharge Consent (Application RM160004)

To discharge stormwater to land on proposed Lot 1, which is within the Slope Instability Risk Area.

Submissions due: 4.30 pm on Friday 8 July 2016.

Affordable Professional Funerals

We can provide every service and option, and leave you with memories of a lifetime of love.

03 544 4400 • www.wrfs.co.nz



**WAIMEA RICHMOND
FUNERAL SERVICES**

COMMUNITY NOTICES

Wakefield Community Council – Annual General Meeting

Tuesday 12 July 2016, 7.30 pm, St Johns Worship Centre. All welcome.

Richmond Community Forum – Annual General Meeting

Wednesday 6 July 2016, 7.30 pm, Richmond Library. All welcome.

All of your Tasman District
Council information
www.tasman.govt.nz

COUNCIL MEETINGS

Agendas and Minutes for Council meetings can be viewed on our website at www.tasman.govt.nz

Engineering Services Committee

Tasman Council Chambers, 189 Queen Street, Richmond, Thursday 7 July 2016, 9.30 am. Public forum

Golden Bay Community Board

Takaka Fire Station, Motupipi Street, Tuesday 12 July 2016, 9.00 am. Public forum

Community Development Committee

Tasman Council Chambers, 189 Queen Street, Richmond, Thursday 14 July 2016, 9.30 am. Public forum

24 Hour Assistance Phone your local Service Centre

Richmond	03 543 8400
Murchison	03 523 1013
Motueka	03 528 2022
Takaka	03 525 0020



Newsline is produced by HotHouse Communications for Tasman District Council and is printed by Printhouse on recycled/recyclable paper. For advertising and editorial enquiries please contact HotHouse on phone 03 545 7995 or Email: newsline@hothouse.co.nz

Introducing... Port Taranakohe manager Matt Blythe

Port Taranakohe has a new captain at the helm, former Police dog handler Matt Blythe.

After a 25-year career with the Police and four years working in Animal Control with several North Island councils, Matt is now settling into the rhythms of his new role after starting in April.

"I feel very lucky to be in the Takaka area, and still pinch myself occasionally when I think that I'm actually getting paid to be here. I have found the people here to be some of the most genuine and friendly people that I have ever met," Matt says.

He explains that health and safety and growing the value of the port for all users are areas he will be focussing on.

"I'm a firm believer in health and safety in the workplace, and I'm very happy with the new legislation which will go a long way to ensure that workers and others can confidently be safe. In my role at Taranakohe I want to make sure that the port is a safe place for everybody to work or recreate, and I'll also be ensuring that there is a full and proper set of standard operating procedures for all port activities."

Matt says the port is a fantastic asset for the Golden Bay community and the Council. "I really want to promote and improve the value of the port to everybody. It would be great in time to see growth in the port arising from both commercial and recreational activities – and I would love to see an increase in tourist numbers through cruise ships, which benefit the local community and businesses."

Consultation planned on regional landfill

From 4 July we will be asking for your views on a proposal to share control of the Eves Valley landfill with the Nelson City Council.

The arrangement is part of our plans to operate a single regional landfill in partnership with Nelson. We're aiming to reduce our long-term costs and along with Nelson, reduce waste volumes in the region.

To move to the next stage, we have to make a change to our Long Term Plan (LTP) for 2015-2025. That's because the current proposal is

different to what was consulted on and contained in the LTP.

You may have heard a little about the proposal through our Annual Plan engagement earlier this year. We want to know what you think about the new proposal before we proceed.

All the details of the proposal, including information on its impact on capital spending, debt, rates and the waste disposal charges you pay, will be available on our website from 4 July – www.tasman.govt.nz/feedback.

Submissions will close on 5 August 2016.

Interested in representing your community?

Candidate nominations for the upcoming Council elections open on Friday 15 July – so if you'd like to influence the decisions that make a difference to your community, it's time to put your hand up.

Nominations for the mayor, ward councillors and community board members must be received by noon on Friday 12 August.

All the information you need is available on our website, tasman.govt.nz/link/elections or by contacting Electoral Officer Sandra Hartley on Ph. 03 543 8400 or email Sandra.hartley@tasman.govt.nz.

Local Elections 2016
**YOUR VOTE
YOUR COMMUNITY**



ASTRO **SEPCLEAN**
BIO SPREADING SEPTIC TANKS

**SEPTIC TANKS • BULK COLLECTION
GREASE TRAPS • SUMPS**

Introducing our region's largest liquid waste company - organised, ethical and local - keeping our homes, businesses and public places clean and safe.

NELSON MARLBOROUGH WASTE

FREEPHONE 0800 725 326
www.nmwaste.co.nz • sales@nmwaste.co.nz