

Newsline



Keeping you informed about news and events in Tasman District

Long Term Plan – Key Issues **P.3**

Community Partnerships **P.9**

Council Updates **P.10-11**

Tasman District Council Long Term Plan 2015-2025

The Tasman District Council has formally adopted its Long Term Plan 2015-2025.

Mayor Richard Kempthorne says the plan presents a clear and financially prudent approach to building a better Tasman District for the future.

"The plan has been challenging to produce as a result of the changes we have made to the way we manage our finances, particularly the focus on how the Council manages debt, rates affordability and paying for the wearing out of assets, whilst maintaining a focus on delivering essential services to the community.

"Substantial changes have been made to what the Council funds and how it is funded ie less debt and lower rate rises, and turning the community's objectives into action."

The Council has committed to:

- A significant reduction in its net debt forecast – now \$120 million in year 10 of the Plan;
- a 3% per annum (plus an allowance for growth) limit on increases to rates income in any one year;
- Changing the Council's financial strategy, to set the external net debt limit at \$200 million, limit servicing of Council debt to 15% of operating income, and change the approach to funding asset renewal;

- Setting aside \$25 million for co-investment in the Waimea Community Dam project;
- Allocating funds for a new community facility in Golden Bay;
- Improving the Motueka Library; and
- Assisting recovery from damaging natural events.

Chief executive Lindsay McKenzie said residents could be confident in the Council's overall direction. "We have reduced costs and spending on external contracts and increased our expertise to manage projects and get the most out of our assets. At the same time we have maintained our levels of core service and we're planning for growth.

"This Long Term Plan was not just the work of Councillors and staff. Over 500 submitters took the time to write submissions on the Consultation Document and supporting information, many of whom presented their submissions at the hearings. About half of those submitters supported Council funding for the Kohatu Motor Sport Park. While the Council is supportive of initiatives with regional benefits, regrettably the project does not fit with the Council's funding priorities at this time."

Message from the Mayor

You may not know it, but last week was National Volunteer Week. Between 21 – 27 June 2015 local leaders and business executives from across the District helped to serve their community as volunteers. It was my pleasure to spend a morning volunteering with MenzShed Waimea in Richmond, meeting a group of intellectually handicapped men and assisting them to build pest traps for the Waimarama Sanctuary.

I would like to thank the MenzShed for hosting me and for the work they do within our community. I would also like to congratulate Volunteer Nelson on their 'Volunteer Challenge' initiative, which has successfully raised the profile of National Volunteer Week and again highlighted the tremendous contribution volunteers make to our community.

Most importantly, to those of you who donate your time freely to the community I offer my sincere and heartfelt thanks. Without you many of the groups, events and associations we all enjoy would not exist and our District would be the poorer for it.

Also in this edition of Newsline you will see outlined the key issues and decisions associated with the Long Term Plan 2015-2025.

Council achieved a major milestone last week as we adopted the Plan, which has been the focus of a great deal of work for Councillors and staff. I'm proud to say it has been worth it. Not only have we introduced a major shift in reducing reliance on debt, we have done so while keeping rates affordable. We don't create these plans in isolation and so I need to thank the many residents and groups who took the time to play a role in the process.

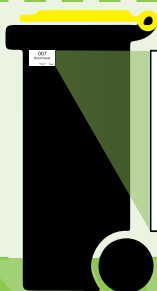
Plans will be available from Friday 3 July 2015 and you are welcome to take some time to view them either online or at any Council service centre or library.



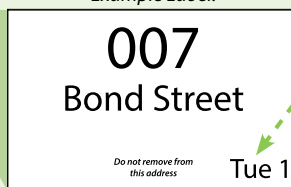
Mayor Richard Kempthorne

WHEN DOES YOUR NEW BIN GET COLLECTED?

1. CHECK YOUR BIN LABEL TO SEE WHICH DAY YOUR COLLECTION IS ON AND WHICH WEEK YOUR RECYCLING COLLECTION IS ON...



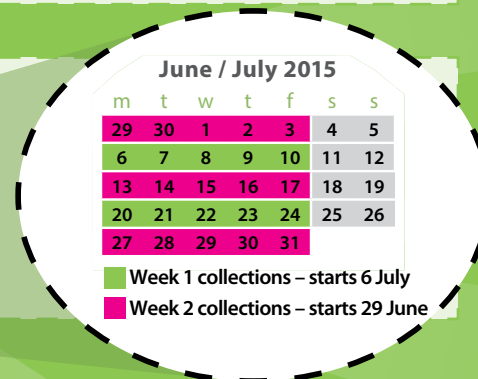
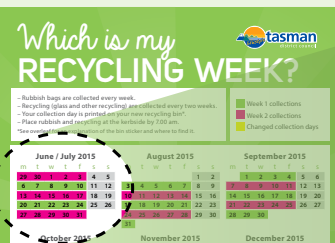
Example Label:



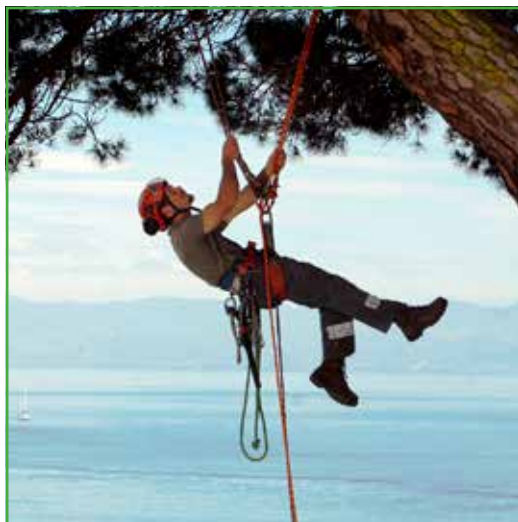
Tue (Tuesday):
Your collection day

1 (Week 1):
Your recycling collection week

2. CHECK YOUR CALENDAR TO CONFIRM YOUR RECYCLING COLLECTION WEEK...



Please refer to the Handbook for further information, or contact the Council, Ph. 03 543 8400.



TASMAN'S TOP TREE TEAM

Nelmac Tree Care is #1 in the top of the south.

Call us for a free quote for: canopy reduction, tree removal, pruning, hedges & all tree work.

0800 635 622



Key issues and responses

The table below provides a summary of key issues identified in the Consultation Document and how the Council plans to respond following the consultation submissions, hearings and deliberations.

ISSUE	RESPONSE
1. Addressing Rates Affordability	<ul style="list-style-type: none"> Limit total rates income increases to a maximum of 3% per annum plus an allowance for growth. Growth rates are expected to be between 1.17% to 2.55% per annum during the 10 years of the plan. Work within a fiscal envelope that sets a limit on general rates of \$51 million per annum and targeted rates of \$46 million per annum over the 10 year period.
2. Managing Council's Debt	<ul style="list-style-type: none"> Set the external net debt limit at \$200 million. Limit servicing of Council debt to 15% of operating income. Fund "the 'wear and tear' (depreciation) on assets progressively from cash flow as the asset wears out rather than borrowing to pay for the replacement asset. Council assets will be reviewed for potential sale.
3A. Developing Resilient Communities Part A. Providing a secure water supply, with a focus on the Waimea Community Dam	<ul style="list-style-type: none"> Provide up to \$25 million towards the construction of the Waimea Community Dam with the balance of costs to be funded by external sources including irrigators and the Crown Irrigation Investment Fund. Refer to the Waimea Community Dam website (www.waimeacommunitydam.co.nz) for more information on the proposed dam.
3B. Developing Resilient Communities Part B. Hazard planning and recovery	<ul style="list-style-type: none"> Undertake an assessment of stormwater secondary flow paths at a cost of \$2.017 million over 10 years. Undertake hazard risk assessments and modelling for settlements vulnerable to sea level rise and associated planning responses. Build and maintain the Council's disaster recovery funds to \$6.5 million by 2018. Maintain appropriate operational budgets, insurance cover, committed borrowing facilities and self insurance funds to mitigate or recover from unexpected disaster events.
4A. Responding to Population Growth Part A. Providing sufficient land and services	<ul style="list-style-type: none"> Extend infrastructure rather than provide for piecemeal development when considering additional land for residential development including through Tasman Resource Management Plan Changes. Implementing the central government Housing Accord for Tasman District.
4B. Responding to Population Growth Part B. Development Contributions Policy changes	<ul style="list-style-type: none"> Adopt the Development Contributions Policy. Require the costs of providing the growth component of infrastructure to be paid by the developer, rather than general ratepayers.
5. Maximising Regional Opportunities	<ul style="list-style-type: none"> Develop a memorandum of understanding with each or all iwi in Te Tau Ihu (the top of the South). Rationalise investment of capital for regional infrastructure (e.g. solid waste landfill). Improve governance arrangements for shared facilities, such as regional scale infrastructure and facilities that deliver regional benefit. Review existing funding of 'out of Tasman District' activities to enable the Council to fund further activities within the Tasman District. Not fund further 'out of district' regional initiatives.

HOUSE & LAND PACKAGES Available now – don't miss out!



- * Mount Richmond, Hill Street, Richmond
- * Three Ridges, The Ridgeway
- * Langdale Grove, Richmond
- * Springlea Estate, Atawhai
- * Tana Pukekohatu, Grey Street, Motueka
- * Galeo Estate, Redwood Valley

Some conditions may apply.
Photos are sample only.

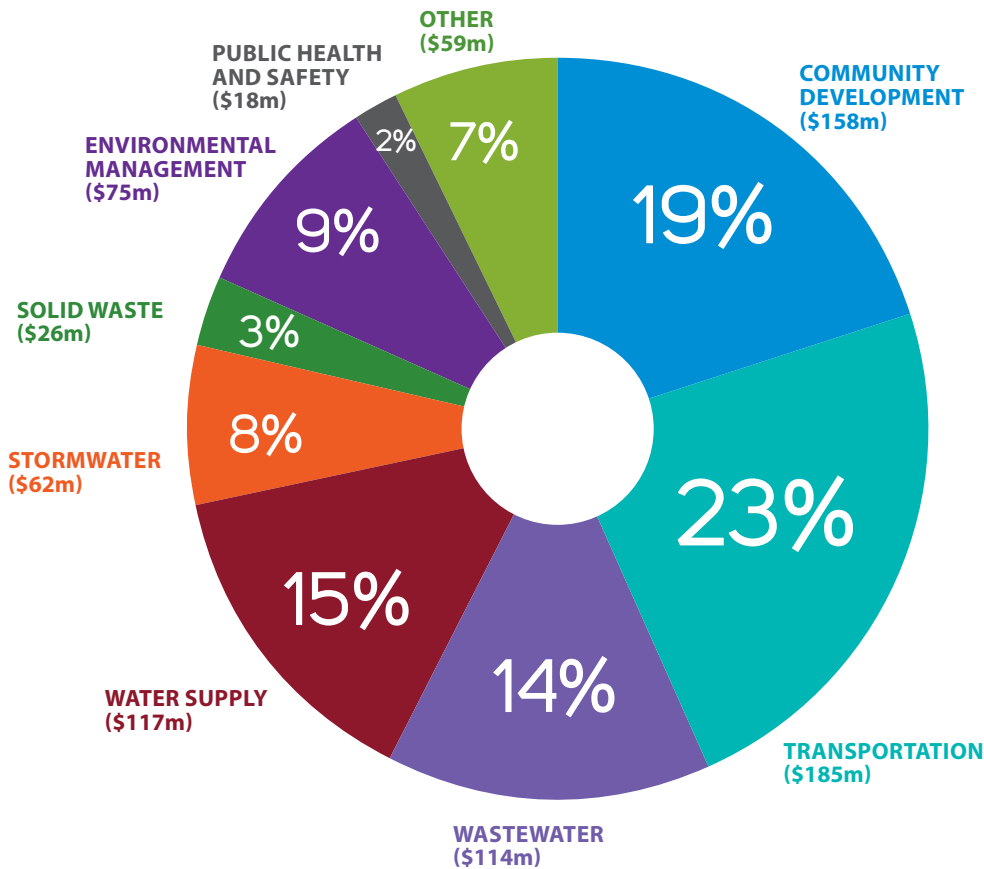


NELSON OFFICE 195 Queen Street, Richmond. Phone: (03) 543 9502 OPEN Mon–Fri 8am–5pm
SHOWHOME 2 Marino Grove, Richmond. OPEN Mon–Fri 11am–4pm, Sat & Sun 1pm–4pm
0800 42 45 46 www.gjgardner.co.nz

G.J. Gardner. HOMES

Where rates are going to be spent

The Council provides a wide range of services. The following graph shows the proportion of rates proposed to be collected for these services over the next 10 years.



Stormwater, Wastewater, Water Supply and Solid Waste 40% (\$319m)

- Water – 15 water supply areas, 807km of pipelines, 36 pumping stations, 11,600 domestic connections, 110 reservoirs and break pressure tanks, Wai-iti water storage dam.
- Wastewater – 14 Urban Drainage Areas, 396km pipeline, 3,670 manholes, 77 sewerage pumping stations, seven wastewater treatment plants.
- Stormwater – 15 Urban stormwater drainage areas and one general district area, assets used include drainage channels, piped reticulation networks, tide gates, detention or ponding areas, inlet structures, discharge structures.
- Solid Waste – one operational landfill and 22 closed landfills, five resource recovery centres.
- Rivers – Council maintains 285km of X and Y classified rivers, assets include river protection works such as stopbanks, rock protection and willow plantings.

Community Development 19% (\$158m)

- Parks and reserves – 804ha of reserve land and 52 playgrounds.
- Community recreation.
- 20 Community halls.
- Five multi-use community recreation centres
- Other community facilities and buildings.
- Cultural services and Community Grants.
- Four Public libraries.
- Three Museums
- One indoor swimming pool (Aquatic Centre) and three outdoor swimming pools.
- 12 Cemeteries.
- 91 Public toilets.
- Eight Community housing complexes – (101 separate units in total).

Other 7% (\$59m)

- Forestry (approximately 2,800 hectares).
- Four commercially operated Council camping grounds.
- Property.
- Motueka and Takaka Aerodromes.
- Council Controlled Trading Organisations.
- Council support.
- Elections.
- Representation reviews.
- Strategic planning.
- Communication.
- Elected representatives.

Environment and Planning 11% (\$93m)

- Resource Policy.
- Resource and Environmental Information.
- Resource Consents.
- Environmental Monitoring.
- Regulatory Services – animal control, building consents, health and liquor licensing and inspections, noise control, parking control.
- Land Information.
- Civil Defence Emergency Management.
- Rural Fire.
- Biosecurity – pest plant and animal management.

Transportation 23% (\$185m)

- Roading – 1,741km of roads (955 sealed, 786km unsealed), 483 bridges and footbridges, 282km footpaths, walkways and cycleways, 22 off street car park areas, on street car parking, streetlights, traffic signs, culverts and Tasman's Great Taste Trail.
- Coastal Structures – Provision and management of coastal structures (wharves, jetties, boat ramps, associated buildings and foreshore protection walls) owned by the Council, along with provision of navigational aids to help safe use of the coastal waters.

The major capital projects we have planned for you from 2015–2025

Over the next 10 years we are planning to:

- Upgrade wastewater and stormwater systems,
- Develop new water supplies and upgrade existing ones to meet central government drinking water standards,
- Undertake town centre improvements,
- Upgrade the Motueka Library and,
- Complete the Golden Bay Community Facility.

The Council is also planning to undertake maintenance, replacement and renewal of a range of its existing assets. Funding has been allowed in the Long Term Plan to undertake that work.

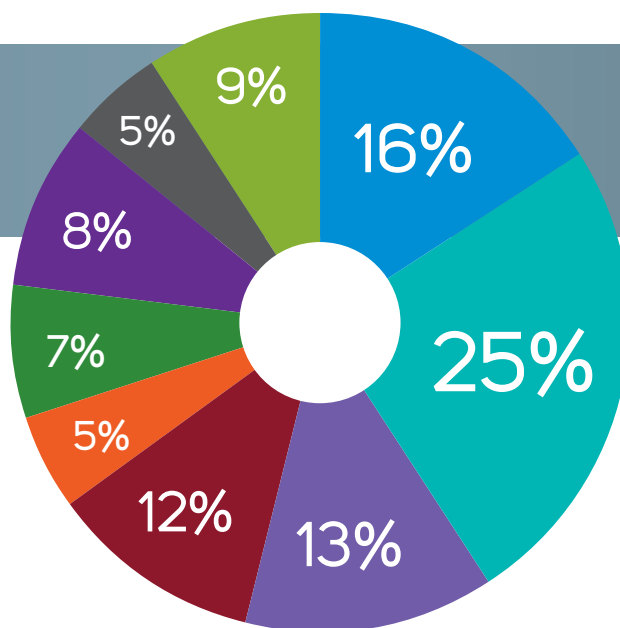
The infrastructure strategy also sets out the major capital engineering projects, but for a longer time period – from 2015 to 2045. This enables the Council to plan ahead. The following list shows what and when the Council is planning to undertake projects exceeding approximately \$5 million over the term of this Long Term Plan.

MAJOR PROJECTIONS TIMELINE

YEARS	PROJECTS	BUDGET
2015 – 2025	Richmond central improvements (stormwater)	\$15m
2015 – 2032	Borck Creek capacity upgrade (stormwater)	\$14.1m
2015 – 2020	Waimea Community Dam (water)	\$25m
2018 – 2023	Mapua/Ruby Bay rising mains and pump stations upgrades (wastewater)	\$5.1m
2018 – 2026	Pohara to Tarakohe pump station and rising main upgrades (wastewater)	\$6.1m
2023 – 2035	Wastewater trunk main upgrade from Wakefield to Three Brothers corner (wastewater)	\$12.5m
2024 – 2026	Richmond new ground water source (water)	\$4.5m

2015-2025 Total Operational Expenditure by Category

COMMUNITY DEVELOPMENT	16% (\$198m)
TRANSPORTATION	25% (\$307m)
WASTEWATER	13% (\$161m)
WATER SUPPLY	12% (\$144m)
STORMWATER	5% (\$60m)
SOLID WASTE	7% (\$90m)
ENVIRONMENTAL MANAGEMENT	8% (\$106m)
PUBLIC HEALTH AND SAFETY	5% (\$59m)
OTHER	9% (\$111m)



HAS YOUR WASTE WATER SYSTEM BEEN SERVICED RECENTLY?

WASTE WATER SYSTEM SERVICING

Qualified drainlayers and waste water technicians
Covering the Nelson-Tasman region

Agents for Hynds and RX Air Tec – servicing all other makes and models

Contact: Alex Bint or Ron Way
Ph. 03 528 8888

 **thinkwater** TASMAN BAY

Your rates: Example properties

	CAPITAL VALUE (2014 DISTRICT WIDE REVALUATION)	2014/2015 ACTUAL RATES	2015/2016 RATES IF 2014 REVALUATION HAD NOT OCCURRED	2015/2016 RATES (POST REVALUATION)	% CHANGE FROM 2014/15
Residential – Takaka	\$270,000	\$2,477	\$2,501	\$2,459	-0.7%
Residential – Murchison	\$160,000	\$1,803	\$1,829	\$1,807	0.2%
Residential – Mapua	\$495,000	\$2,129	\$2,103	\$2,144	0.7%
Residential – Kaiteriteri, with 65m ³ of water, Urban Water Supply Metered Connections	\$660,000	\$4,219	\$4,199	\$4,106	-2.7%
Residential – Brightwater, with 183m ³ of water, Urban Water Supply Metered Connections	\$385,000	\$3,444	\$3,521	\$3,555	3.2%
Residential – Wakefield, with 140m ³ of water, Urban Water Supply Metered Connections	\$350,000	\$3,058	\$3,149	\$3,184	4.1%
Residential – Motueka, with 138m ³ of water, Motueka Urban Water Supply Metered Connections	\$380,000	\$2,893	\$2,937	\$2,988	3.3%
Residential – Richmond (Waimea Village,) with 30m ³ of water, Urban Water Supply Metered Connections	\$200,000	\$2,380	\$2,439	\$2,462	3.4%
Residential – Richmond, with 133m ³ of water, Urban Water Supply Metered Connections	\$510,000	\$3,583	\$3,693	\$3,703	3.4%
Residential – Richmond, with 186m ³ of water, Urban Water Supply Metered Connections	\$1,020,000	\$5,269	\$5,450	\$5,471	3.9%
Dairy Farm – Collingwood-Bainham	\$7,450,000	\$22,928	\$22,964	\$22,611	-1.4%
Forestry – Motueka	\$5,575,000	\$14,901	\$15,049	\$16,508	10.8%
Horticulture – Hope	\$1,210,000	\$4,209	\$4,203	\$4,038	-4.1%
Horticulture – Ngatimoti	\$660,000	\$2,417	\$2,425	\$2,398	-0.8%
Horticulture – Waimea West, with 9 hectares, with Water Supply Dams – Wai-iti Valley Community Dam	\$1,150,000	\$7,329	\$7,242	\$7,628	4.1%
Pastoral Farming (Fattening) – Upper Moutere	\$940,000	\$3,226	\$3,234	\$3,172	-1.7%
Lifestyle – Wakefield, with 3m ³ /day restrictor, Eighty-Eight Valley Rural Water Supply	\$1,600,000	\$5,433	\$5,513	\$5,496	1.2%
Lifestyle – East Takaka	\$495,000	\$1,957	\$1,951	\$1,890	-3.4%
Lifestyle – Neudorf, with 3m ³ /day restrictor, Dovedale Rural Water Supply	\$550,000	\$3,452	\$3,613	\$3,545	2.7%
Lifestyle – Tasman with 2m ³ /day restrictor, Rural Water Extension to Urban Water Scheme	\$680,000	\$3,756	\$3,833	\$3,808	1.4%
Lifestyle – Bronte, with 3m ³ /day restrictor, Redwood Valley Rural Water Supply	\$1,070,000	\$4,514	\$4,704	\$4,627	2.5%
Commercial – Queen St, Richmond, with 270m ³ of water, Urban Water Supply Metered Connections	\$1,310,000	\$9,066	\$9,332	\$9,548	5.3%
Commercial – High St, Motueka	\$1,300,000	\$7,292	\$7,455	\$7,258	-0.5%
Industrial – Cargill Place, Richmond, with 69m ³ of water, Urban Water Supply Metered Connections	\$620,000	\$3,925	\$4,046	\$3,922	-0.1%
Utility	\$69,960,000	\$637	\$196,862	\$179,527	28102%

The table above is GST inclusive. It covers the total rates increases including both the increases in the general and targeted rates. Metered water has been included using the actual volumes for the example properties in the previous year.

Hiccup for new Richmond Water Treatment Plant

The new Richmond Water Treatment Plant (WTP) had its first real test recently when a water sample tested positive for E.coli in the Richmond water network.

An action plan was immediately developed with Tasman District Council, MWH, Downer, and Hawkins staff working through the potential causes of contamination. Chlorine was added to the water supply to mitigate any contamination issues. In consultation with the local public health service a temporary boil notice was issued for two days, specifically aimed at those residents at the end of the system.

The most likely cause was contamination from an outside source and this was proven when the culprit – a dead swallow – was found in the balance tank.

The bird was removed and the tank was fully drained and no other contamination was found. From the inside of the tank, several small holes were seen in the wall-roof join and these were filled so the integrity of the tank could be assured.

Were there any health risks?

The water was chlorinated once the contamination was identified and once this reached our customers there is no evidence to suggest there was a health risk. Chlorination would have killed any bacteria present on the bird.

The Richmond Water Treatment Plant is a large, complex plant. During the design stage commissioning risks were identified and mitigations were put in place, including a testing regime and commissioning period. At some point the plant must go live and the Council has a three month trial operation period to resolve any issues that may arise.

Why does my water taste different?

Chlorination of the water supply (at a low dose) has been ongoing whilst further minor works are carried out at the plant.

The Council has received numerous complaints about the taste and odour of the chlorine in the water. The dosing level was well within guidelines and similar to other chlorinated water schemes such as Brightwater and Wakefield. The current level is very low and is providing protection for water leaving the plant.

As the Richmond water supply has not been chlorinated before, the taste and odour may appear worse as chlorine reacts with organic material which naturally accumulates in pipes in unchlorinated supplies.

The water is safe to drink and when the chlorine is switched off the water should be back to tasting great again.

The Council regularly tests its water supplies throughout the District. The water supply leaving the Richmond Water Treatment Plant is tested every day and at our reservoirs several times a week. Tests are carried out by the Cawthron Institute.

Waimea Dam and Water Management

One of the major issues facing the Council is the shortage of water in the Waimea River and aquifers in times of dry weather. There is simply not enough water during these times to provide for a healthy river ecosystem while meeting the demands of reticulated urban and rural water users.

Recent changes have been made to the Tasman Resource Management Plan (TRMP) to significantly reduce the amount of water that can be extracted to protect the river and aquifers.

This is an important issue because:

- the Council is a major water user; it uses water from the Waimea River system to supply the Richmond, Brightwater, Mapua/Ruby Bay, Redwood Valley and surrounding low-flow rural reticulated community water supply networks;
- the Council has a role in protecting the environmental values of the Waimea River; and
- much of our economy is based on the primary sector, which relies on a secure water supply.

The Tasman Resource Management Plan required the Council to make a decision by 30 June 2015 on whether or not it will provide for a dam in the Lee Valley in the Long Term Plan 2015-2025. If the Council decides not to proceed with the Waimea Community Dam, there will be greater water restrictions.

The new rules mean the restrictions would be likely to occur more often, last longer, and be harsher than previous years. The restrictions will have a large impact on existing and future urban, rural and commercial water users in Richmond, Brightwater, Redwood Valley and Mapua and Waimea Plains horticultural and agricultural water users.

There are many issues that need to be resolved before the Waimea Community Dam project proceeds, particularly relating to the cost

and affordability of the proposed Dam. The Council recognises that significant external funds are needed to make the project viable.

The Waimea Community Dam website explains in more detail what is being proposed, the new timeframe for construction, and implications for the Tasman Resource Management Plan – see www.waimeacommunitydam.co.nz.

What we plan to do...

Within the Long Term Plan the Council is planning to contribute up to a maximum of \$25 million towards the Waimea Community Dam. This expenditure is contingent on further funding being raised by irrigators to cover at least two thirds of the project's total cost. Rural water users and irrigators will need to establish an acceptable funding model for the irrigation portion of funding.

To assist this process the Council is providing a loan of up to \$300,000 to the irrigator-led company, Waimea Community Dam Limited (WCDL), to assist it to undertake work to secure external funding from users and external agencies. In addition, approximately \$70,000 in 2015/2016 from the Waimea Water Augmentation Project user levy will be provided to WCDL as a grant.

The \$25 million funding is to be used mainly to secure water for the Council's reticulated water supply users and contribute to the environmental health of the Waimea River.

Increases in water rates will not cause the Council to breach the 3% rates income increase limit and the Council's debt will increase by up to \$25 million. All these increases are within the financial envelope of the Long Term Plan, i.e. it is not additional debt or funding that has been sought.



Do your trees hang low?

Has your garden grown like mad over autumn? Then now may be a good time to check that your vegetation hasn't become a nuisance to others.

If you have a hedge, shrubs or trees that grow alongside a footpath it's up to you to make sure they don't grow too far out, making it hard for others to pass.

Now is an excellent time to give plants a trim, so take a walk around your property and check if a hair cut is needed. Make sure you consider whether the footpath is easily passable for those in wheelchairs, on mobility scooters, or with prams – don't just look at it from a pedestrian's point of view.

Is there sufficient room for people to pass each other? If not, it's time to reach for the clippers.

Overhanging tree branches are also a problem. If you have a tree growing near a footpath you need to make sure tree branches are trimmed right back to your boundary. Trees overhanging footpaths become a problem in wet weather when the water weighs the branches down and they drip on footpath users. During autumn/winter wet leaves on the footpaths are very slippery.

Please check out your boundary and let common sense be your guide because it is up to you to make sure nothing from your property is obstructing the footpath.

The examples above demonstrate what is good and what's not.

If you'd like further information on this topic please contact the Council on Ph. 03 543 8400

Update on widening of Saxton Creek and Champion Road culvert

Construction work is due to start this month on the upgrades to the Champion Road culvert and channel widening. Construction has been delayed owing to negotiations over land access. These negotiations have been resolved and resulted in Tasman District Council and Nelson City Council working together to co-ordinate the first stage of works at the culvert and immediately downstream of the culvert.

While this delay has been frustrating for residents, the partnership approach will enable us to do the work more efficiently. The work includes the culvert upgrade, a pipe-bridge for large water mains, a 7m widening of the channel below the culvert, installation of a gravel trap and new bridge crossing at the Riding for the Disabled Association site.

Donaldson Civil is planning to start work early in July 2015 for around 16-20 weeks. A copy of the culvert design drawings is available on the Council's website under 'Tasman / Projects'.

As this work is taking place in the winter months we are mindful of the risk of rain events during the works. Sandbags are available at the culvert site for use by residents in an emergency.

An email newsgroup has been set up to keep people updated with progress, and we will normally send out a weekly email. If you want to join this group please Email: projects@tasman.govt.nz with 'join Saxton Creek mailgroup' as the email subject.

If you have any questions about the project please contact the relevant project manager;

Chris Blythe, Email: chris.blythe@tasman.govt.nz, Ph. 03 543 7266 (Champion Rd Culvert)

Josh Large, Email: Joshua.large@ncc.govt.nz, Ph. 03 546 0353 (Saxton Creek Widening).

Community partnerships

Boredom Busters

Bust the boredom these school holidays! Follow the link to find out what school holiday activities and events are taking place around the region. www.tasman.govt.nz/link/boredom-busters

Community Grants

Applications are now open for Tasman District Council's Community Grants. Grants are one off and are made to organisations whose services and projects provide community-wide benefit. Applications close 31 August 2015.

Application forms are available from Council offices and Libraries in Richmond, Motueka, Golden Bay and Murchison and this year you are able to apply using the online application form.

www.tasman.govt.nz/link/community-grants-application

Creative Communities Scheme

Do you have a great community Arts project that needs some dollars to make it happen? The Tasman Creative Communities Scheme maybe just what you're looking for. The aim of the fund is to support local projects that increase access and participation in arts activity. Applications close 10 July, next round closes 10 November.

For application forms – www.tasman.govt.nz/council/grants-funding/available-grants-funding/creative-new-zealand-tasman-creative-communities/

Community Plantings

Research Orchard Road Appleby

Sunday 2 and 9 August 2015, 10.00 am–1.00 pm, meet at Research Orchard Road, look for the Tasman District Council flags.

Faulkner's Bush Wakefield

Saturday 8 August 2015, 10.00 am–1.00 pm, look for the Tasman District Council flags.

What's Happening in Tasman's Community Facilities ...

Moutere Hills Community Centre

Sarau Book Fair Saturday 18 and Sunday 19 July 2015, 10.00 am – 3.00 pm, Moutere Hills Community Centre, Refreshments available.

Motueka Recreation Centre

The one-stop shop for indoor activities. An international sized roller skating rink, 20m rock climbing wall, cinema, plus a sports hall catering to almost any sport you can think of.

Richmond Aquatic Centre

The Richmond Aquatic Centre offers the ultimate swimming experience, with spa pools, lap pool, lazy river, wave pool, water features along with a pool side cafe with yummy snacks and drinks.

Golden Bay Museum

Our "Lest We Forget" WW1 exhibition continues until 30 October 2015. New items from the Margaret Wilson Collection (the museum's founding collection) have been put on display.

The Museum will be closed from 20 July 2015 and reopen on 10 August 2015. This will enable staff to undertake work that cannot be done when our doors are open.

Motueka District Museum

The Motueka Camera Club exhibition runs from 7 to 31 July 2015. This is always a popular exhibition of local photographers. The new exhibition 'Gallipoli, in search of a family story' runs from 1 September 2015. The exhibition is focused on Jack Dunn the only serving New Zealander at Gallipoli to be sentenced to death by court martial.



GO GATOR!

Stay safe with a ROPS certified occupant protection system.



Gator 550 XUV

On Demand True 4WD, 4 seat model available, Independent front & rear suspension.



Gator 825i XUV

On demand True 4WD, Superior terrain capability, Advanced 812cc Petrol engine system.



Gator 855D XUV

Reliable and Efficient, Yanmar diesel engine, 2-range CVT trans, On Demand True 4WD.



Ph: 03 543 8041
70 Gladstone Road,
Richmond

www.gordonhandy.co.nz



*Conditions apply. Finance available through John Deere Financial Limited to approved commercial applicants only. Valid on select new Gator Utility Vehicles. Offer is based on a 20% deposit, GST back and a 36 month term. Fees and charges apply. If not amended or withdrawn earlier, the promotion expires on 31/07/2015.



join our community:
Twitter • Facebook • Website

Public Notices

Roadside Spraying for Vegetation Control in Rural Areas and Registration of Non-Spray Areas

Tasman District Council's roading maintenance contractor is responsible for vegetation control within the road reserve. This includes the use of knock-down, residual and brushweed herbicides to remove vegetation growing in the roadway and around street furniture. The contractor is also responsible for control of pest plants and other noxious weeds such as gorse, fennel, hemlock, blackberry, broom, bracken, purple pampas grass and box thorn.

'No Spray' Registration Option for Residents

Residents can request that their rural property frontage not be chemically sprayed and instead undertake the vegetation control themselves. On approval, the Council's contractors will mark the no spray area with red marker pegs.

Rural residents who choose the "no spray" option must control the vegetation growth along their property frontage to ensure:

- Road users are not impeded and all roadside signs and markers are clearly visible; and
- Vegetation height will not exceed 300mm; and
- Any stormwater drainage ditches need to be kept clear of excess vegetation; and
- At intersections vegetation must be kept well clear to ensure good sight lines for traffic using the intersection.

An application form for your property to be included on the no spray database is available on the Council's website – www.tasman.govt.nz – search for 'no spray'.

Opus International Consultants administer a separate vegetation control programme for the state highway network on behalf of the New Zealand Transport Agency.

Community Notices

Richmond Community Forum

**General Meeting – 7.30 pm Wednesday 8 July 2015,
Tasman District Library Meeting Room.**

Coffee/Tea provided.

Public Notices

Roadside Spraying

Contractors employed by the New Zealand Transport Agency undertake an ongoing vegetation control programme to ensure that roadside vegetation does not affect the safety or operation of the region's state highway network. This programme includes the spraying of chemical herbicides including the following active ingredients: Glyphosate, Metsulfuron, Terbutylazine and Triclopyr. Persons wishing to register their property as a 'no-spray' zone, which requires a commitment to maintain a property's highways frontage to specifications provided by NZTA, may do so by contacting Lea O'Sullivan or Donna Hills on Ph. 03 548 1099 at Opus International Consultants, Private Bag 36, Nelson.



Resource Consents

The Council has received applications for resource consent, which have been publicly notified in The Nelson Mail. The applications and supporting information may be examined in any Council office. The full public notice may be found online at Council's website (www.tasman.govt.nz). Any person may make a submission on the applications in accordance with Section 96 of the Resource Management Act 1991. Submission forms are available from Council offices and on the Council's website. Please note that the following is an abridged advisory notice only.

Applicant: Peter & Nicola Trewavas

Location: 73 Wildman Road, Motueka

Consent Type, Application Number and Proposal:

Land Use Consent (Application RM150451)

To cancel consent notice CN9284695.8, which prohibits a dwelling being constructed on Lot 2 DP 459785. This was imposed as a condition of consent for subdivision RM080525 to mitigate adverse effects on Rural 1 land from fragmentation of productive land.

Land Use Consent (Application RM150501)

To construct a dwelling on Lot 2 DP 459785 in a Rural 1 Zone.

Submissions due: 4.30 pm on Friday 17 July 2015.

Reduce your water meter readings and re-use that precious water

Re-use your household washing water to reduce your water charges and keep your garden lush and green.



- Install in your new home, or retro fit to your existing system
- Change-over valve to regulate quantity of water to garden
- Potential water reuse of over 40,000 Litres/person/year
- Complements a septic tank system - reduces the load
- Easy Installation
- Easy Maintenance
- Chemical Free
- No hidden costs

WaterMate
Grey-water Filtration System

Allflow
EQUIPMENT

Contact us today for a
free information package and
give your water a second chance!

58 Gladstone Road, Richmond

Phone 03 543 9057

sales@allflow.co.nz

www.allflow.co.nz

Public Notices

Adoption of Bylaw – Wastewater Bylaw 2015

The following bylaw has been through the Special Consultative Procedure under Part 6 Section 86 of the Local Government Act 2002.

Tasman District Council Consolidated Bylaw: Chapter 9 – Wastewater Bylaw 2015

The final bylaw was presented and adopted by the Council at their meeting on 18 June 2015. The Council resolved that this bylaw be adopted and come into force on 1 July 2015 – Chapter 9 – Wastewater Bylaw 2015.

The Bylaw is now available for viewing during normal Council hours at the following Council offices:

Richmond Main Office, 189 Queen Street, Richmond
Motueka Service Centre, 7 Hickmott Place, Motueka
Takaka Service Centre, 78 Commercial Street, Takaka
Murchison Service Centre, 92 Fairfax Street, Murchison
And libraries:

District Library, Queen Street, Richmond

Motueka Library, Pah Street, Motueka

Takaka Memorial Library, Commercial Street, Takaka

The bylaw is also available on the Council's website at: www.tasman.govt.nz

Council Meetings

Agendas and Minutes for Council meetings can be viewed on the Council's website at www.tasman.govt.nz

Motueka Community Board Open Forum

Motueka Office, 7 Hickmott Place, Motueka,
Tuesday 7 July 2015, 6.00 pm.

Golden Bay Community Board

Takaka Fire Station, Motupipi Street, Takaka,
Tuesday 14 July 2015, 9.00 am. Public forum

Environment and Planning Committee

Tasman Council Chambers, 189 Queen Street, Richmond,
Thursday 16 July 2015, 9.30 am. Public forum

24 Hour Assistance – Phone your local Service Centre

Richmond 03 543 8400
Murchison 03 523 1013
Motueka 03 528 2022
Takaka 03 525 0020



Tasman Newsline is produced by HotHouse Communications for Tasman District Council and is printed by Printhouse on recycled/ recyclable paper. For advertising and editorial enquiries please contact HotHouse on phone 03 545 7995 or Email: newsline@hothouse.co.nz

Having your
wheelie bin collected
on the same day as
your recycling?

Definitely
Beta

0800 635 622
bettabins.co.nz

Betta-Bins

 **AES WASTEWATER**
back to the future wastewater treatment

250,000+ installations - 20yr warranty
Lowest installed cost

NOTHING TO BREAK DOWN

Don't be stitched up with ongoing maintenance costs
Suitable for TDC Special Areas
Ideal also for retrofitting to existing septic tanks

www.et.nz

03 970 7979 0800 WASTE H2O

 Environment technology

 **AES**

Google it!

ADVANCED ENVIRO-SEPTIC™

Affordable Professional Funerals

We can provide every service and option, and leave you with memories of a lifetime of love.

03 544 4400 • www.wrfs.co.nz



**WAIMEA RICHMOND
FUNERAL SERVICES**



Keeping those drains clear

The recent flooding events in Hokitika and the Whanganui area remind us of the need to ensure our roadside drains and sumps are clear of vegetation.

At this time of the year roadside drains are a magnet for autumn leaf fall. And if they become blocked with vegetation and debris they may not work as well as they should.

While the Council's roading contractors regularly clear drains, leaf litter is a constant problem at this time of the year.

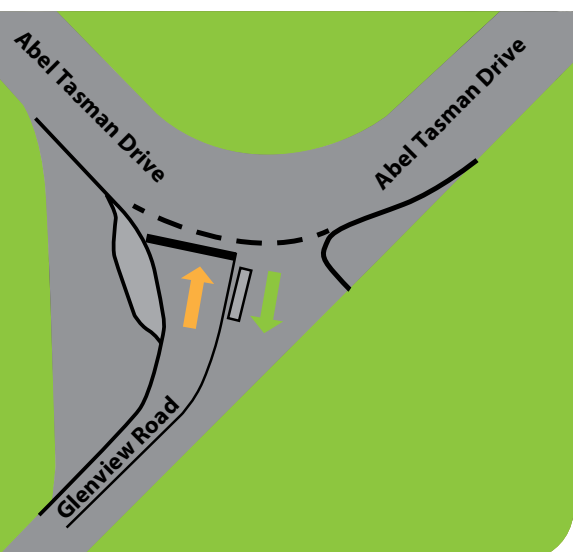
You can do your bit to help

If the drain outside your property is suffering from a build up of leaves, you can help by clearing it up. And remember leaf mould is an excellent additive for your compost bin.

The photos above show the perfect cleared drain (left) alongside one that will quickly clog and direct water onto private property (right).

New road layout in Takaka

Please be aware of the new road layout now in place where Glenview Road intersects with Abel Tasman Drive. The intersection layout has been changed to a single entry and exit to improve safety for road users.



Your not-so-small local company

- Septic Tanks • Bulk Collection • Grease Traps
- Sumps • Farm Work • Drain Jetting



WasteMINZ Compliant • Quality Service • Unbeatable Value
Freephone 0800 725 326 • www.sepclean.co.nz • sales@sepclean.co.nz