

Newsline



Keeping you informed about news and events in Tasman District

Tasman's Great Taste Trail on Rabbit Island

Photo: www.chocolatetadephotography.co.nz

Air quality exceedances **P.3**

Takaka site concepts **P.4**

Community Service Awards **P.8**

Community gardens prove popular

The Motueka Community Gardens were established in 2010 on Tasman District Council land on Old Wharf Road, opposite the Motueka Recreation Centre.

The Trust which runs the gardens was registered early in 2011 with the primary aims of providing a community food production garden for the sustainable production of organic food, promoting the concept and benefits of community food production gardens, and encouraging self-sufficiency in local food supplies. Community gardens are being built in many centres in New Zealand to promote local growth of food and sharing of resources and work, especially among people who cannot manage a garden in their own property, and to provide learning opportunities.

The Motueka Community Gardens recently hosted a workshop, attended by more than 50 people, on how to build a biodigester. Biodigestion is a way of producing natural gas from green waste, and some of the compost at the gardens will now be used to fuel a BBQ down at the gardens. Bill Rucks, international energy expert, led the workshop in how to make and install your own biodigester at home. Established biogas facilities have shown yields of up to .9 cubic metres of biogas per 1 kg of added biomass (green waste). 1 cubic metre of Biogas is equal to:

- 60 -100 watt bulb for 6 hours
- can cook 3 meals for a family of 5 – 6
- 0.7 kg of petrol
- can run a one horse power motor for 2 hours
- can generate 1.25 kilowatt hours of electricity

Motueka Community Gardens chairwoman Tara Forde said "I am hoping that through having the biodigester at the gardens, individual households will see how they can use a biodigester. The BBQ at the gardens is only a show piece, actually people could have biodigesters that provide energy for other appliances around the home."

In Tasman District there are community gardens in Brightwater, Golden Bay and Motueka. Recently several Richmond people have suggested that it would be good to develop a community garden in Richmond. If you are interested in supporting and/or contributing, please come along to a public meeting at the Richmond Library, on Thursday 25 October 2012 at 7.00 pm. For more details call Council's Environmental Educator Rob Francis on Ph. 03 543 8484.

Biodigester workshop at Motueka Community Gardens



Message from the Mayor

Last Monday the Richmond Customer Service Centre was re-opened for service to the greater Richmond area. Blessed by our Kaumatua Reverend Andy Thomas the extension, which houses the Service Centre, is the first stage of the development on the site. The second stage, which is now underway, is the seismic strengthening of the older buildings, a requirement to help ensure the safety of visitors to the building and staff in the event of an earthquake.

When all the work is finished early next year we will have all Council staff who are based in Richmond in one building. Currently there are staff in off-site offices, which adds costs in a variety of forms. By having all staff on one site we can lower the cost of our operations over the long term and provide a better level of service.

As you will see later in this issue of Newsline the Council is considering the way we deliver our engineering services to the community. After a review that began last year we have been provided with a number of options for a way forward. The underlying theme is

that instead of the current use of consultants we are considering the possible benefits of delivering more in-house. This is not a return to what happened in the past, the engineering discipline has moved on. This is about retaining a closer relationship with our ratepayers and residents, having greater control of the information and delivering these services more efficiently and effectively at a reduced cost.

This review, which will be discussed more as we finalise decisions, is an example of Council continuing to look at how we can do things better to deliver the critical services at an affordable cost to ratepayers.

Mayor Richard Kempthorne



Council reviews how engineering services are delivered

A review of the delivery of contracted professional engineering services by Tasman District Council has been the subject of a workshop between Councillors and senior management. The Council needs to ensure the planning, delivery and maintenance of infrastructure, and related services is efficient and cost effective now and in the future.

The workshop focused on the findings of the review carried out by an internal Project Control Group supported by consultants Morrison Low. The review identified a number of benefits and future opportunities



by providing the service in-house, all of which were discussed with Councillors at the workshop.

The next stage is the Council meeting of 29 November 2012 where the business case will be formally presented.

The workshop requested staff to present a report recommending a return to in-house delivery of part of the work contracted out be developed to be considered by the Council. The in-house option, if selected, will result in an increase in the number of engineering staff directly employed by the Council and a significant decrease in consultant's costs.

The in-house option is compelling for three reasons:

- Cost savings opportunities,
- Control of strategy and policy,
- Taking back the direct relationship with the ratepayer.

The Councillors were generally positive about the review's findings.

It was made very clear that there was no issue with the current services provided by the current contractors and Council staff, however, the Council has a responsibility to ensure they are providing the best value for residents and ratepayers.

NBS
NELSON BUILDING SOCIETY

an alternative to the big bank attitude

Offering a comprehensive and competitive range of banking & financial services.
NBS profits are invested back into YOUR community.



NBS is not a registered bank

**NEW ZEALAND'S
OLDEST**
BUILDING SOCIETY

NBS RICHMOND. 207 QUEEN STREET. 03 543 9391.
NBS MOTUEKA. 185 HIGH STREET. 03 528 1111.
NBS TAKAKA. 41 COMMERCIAL STREET. 03 525 6200.
www.nbs.co.nz

**NEW ZEALAND'S
OLDEST**
BUILDING SOCIETY

River Works – annual programme

The Council maintains 285 kilometres of the District's X and Y "classified" Rivers in order to carry out its statutory roles to promote soil conservation and mitigate damage caused by floods and riverbank erosion. These classified Rivers are funded by a differential river rating system based on land value. The river works in the classified rivers, such as stopbanks and the removal of crack willow, are carried out by the Council.

There are many more rivers, streams and creeks that are on private, Council and Crown (Department of Conservation, Land Information New Zealand) lands, which are

not classified. These unclassified rivers have associated river protection works such as rock walls, groynes and river training works that form part of the river system. These are known as River Z areas.

The Council's annual Rivers operations and maintenance programme is available on the Council's website, www.tasman.govt.nz and details the works planned for each year. River Care Group meetings (which the public are encouraged to attend) are held each year to set and develop the rivers programme. While the programme forms a basis for intended work, it can be subject to change as a result of food events or unforeseen urgent works.

The Council undertakes the management of the "classified" rivers system using three levels of classification.

These are described as follows:

- Class X – river sections with stopbanks maintained by Council
- Class Y – river sections maintained by Council without stopbanks
- Class Z – the balance of the district (considered to receive an indirect benefit).

For more information about Rivers in the Tasman District, contact the Transportation Assets Engineer, Giles Griffith – giles.griffith@tasman.govt.nz

16 EXCEEDANCES – Air quality in the Richmond Airshed got worse this winter!

Not the best statistic to have when the Council is about to review the Richmond Airshed strategy but one that, with a bit of basic planning by home owners, could be reversed.

Most people are well aware that air pollution has adverse effects on people's health and well-being. There are national standards for air quality that the Government makes the Council responsible for meeting. The standard set is 50ug/m3 (particulate matter smaller than 10 microns per cubic metre of air). By 2016 Tasman must not exceed this more than three times in a year - not the 16 we recorded this year.

Most of the air pollution in the Richmond Airshed comes from wood burners not the often blamed industrial and rural sectors. More than 80% of the particles in the air during winter come from domestic heating smoke.

The Council adopted an air quality strategy in 2007. It also introduced new rules preventing installation of new wood burners in the

Richmond Airshed and the upgrading of wood burners upon the sale of a house. A good practice guide to managing wood burners was produced and sent to all houses using wood burners to assist people in operating their wood burners to reduce smoke (it is still available from the Council's service centres and on the Council's website).

Initially there was a significant improvement in air quality. It dropped from exceeding 80ug/m3 between 30 and 40 times during winter to exceeding the limit around 10 times during winter. Then this year; over 16 exceedances over winter. Even accounting for the cold weather, this result shows wood and coal burners are not being used properly.

The way in which burners are operated has a big impact on the amount of smoke it produces. All burners can be operated in a way that minimises smoke.

If all existing wood burners and open fires in the Richmond Airshed are replaced by properly

operated clean air compliant wood burners, modelling shows that the Airshed would have clean air.

The Council has also worked closely with wood suppliers through its Good Wood scheme to ensure that only properly dry wood is being sold for heating homes.

Everybody loves a fire and wood burners have many benefits over open fires to heat homes, however unless air quality is improved to meet the national standards, the Council may have no choice but to impose more stringent controls on wood burners in Richmond.

The Council wishes to discuss this problem with wood burner owners in Richmond and people concerned about air quality before carrying out any revision of its air quality strategy.

Council will be holding a public meeting on 27 November 2012 to provide information about the issues and what we can do as a community to improve air quality.

(MATTHEWS)
Eyewear. Eyecare.



Now at Lower Queen Street Health

355 Lower Queen Street, Richmond Tel 03 544 4319

www.matthews.co.nz

Redevelopment concepts for Takaka centrepiece

Takaka residents are putting their stamp on a centrepiece of the town – the former library site in Commercial Street. Three concept plans have been drawn up for redeveloping the site into a restful green space, with seating and artworks.

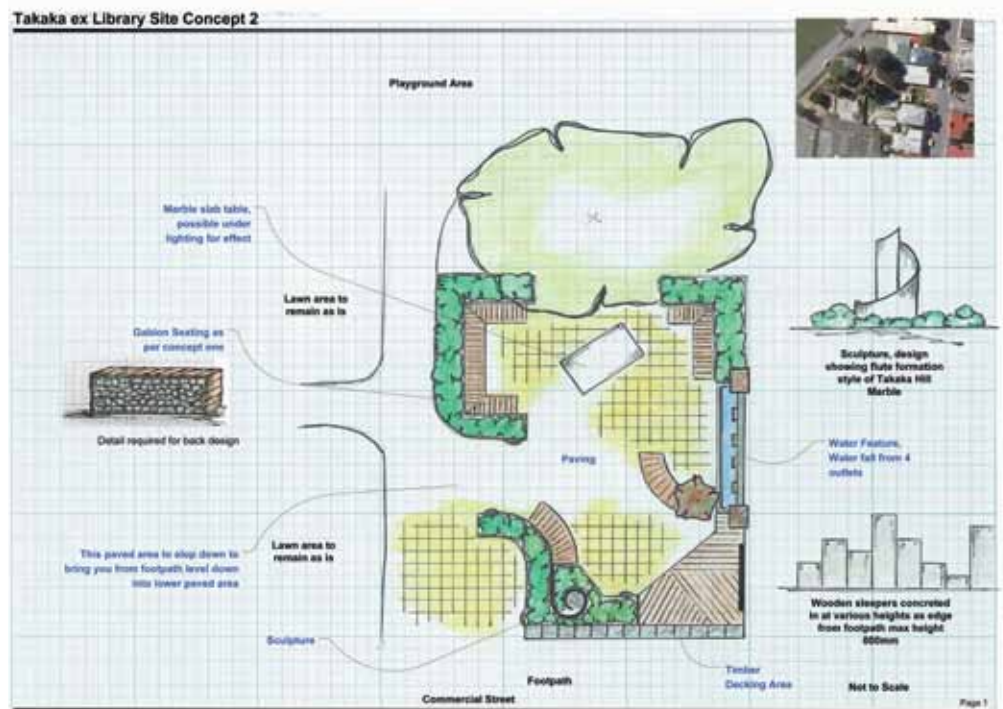
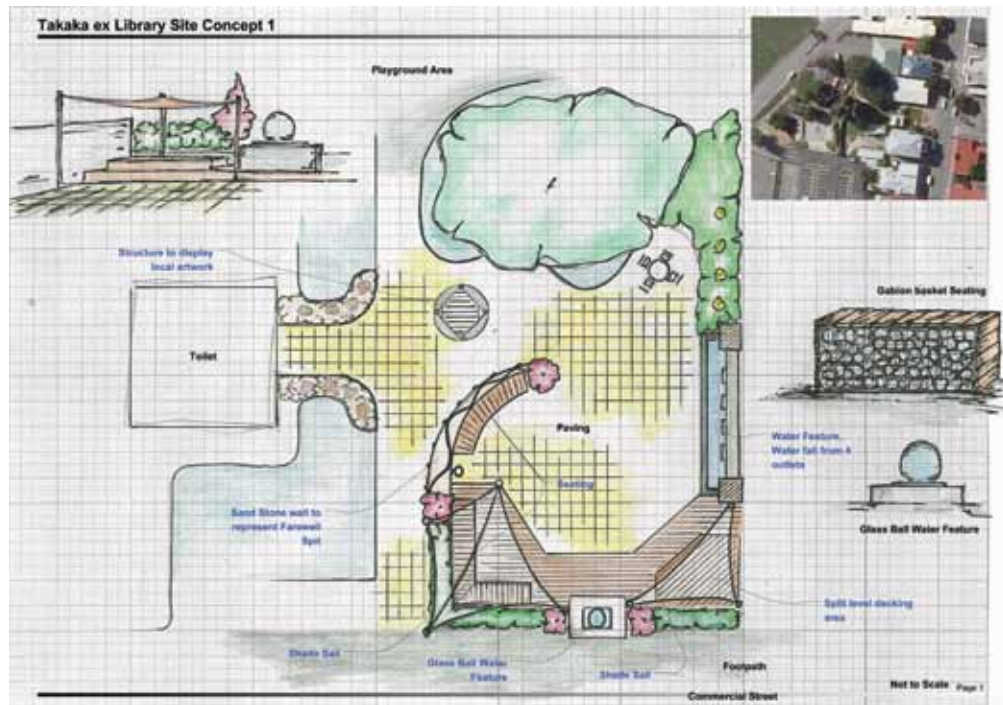
The old library building burnt down in a late-night fire in October 2010. It was owned by the Tasman District Council and housed a business called Timeless Creations.

The building was a cherished part of the townscape. The Council has endeavoured to respect that heritage in the design concepts, which also incorporate ideas gathered from public submissions in late 2010. These include the use of water, open space, seating, local art and a recreational space, plus access to the future upgrade of the playground area behind.

The site is designated a Local Purpose Reserve, so any use must be compatible with "providing and retaining areas for educational, community, social or other local purposes."

Option 1 pays tribute to Farewell Spit in the shape of the main seating. It also features raised decking with shade sails, plantings, and water features both on the Commercial Street footpath edge and along the boundary wall to help screen the fence. Special lighting will be provided for artwork.

The existing art path will remain, and seating is a gabion basket design using Takaka stone and rustic timber.





**Operating costs
between \$12 - \$15
per person/year! ***

**Efficient, German Designed & Engineered
Wastewater Treatment Systems**

Domestic, Commercial and Industrial Packages

From 4 person/day to 1000 person/day Systems

* Based on a 10 person system running at full capacity.

**SEE OUR
DEMO
UNIT
IN STORE**

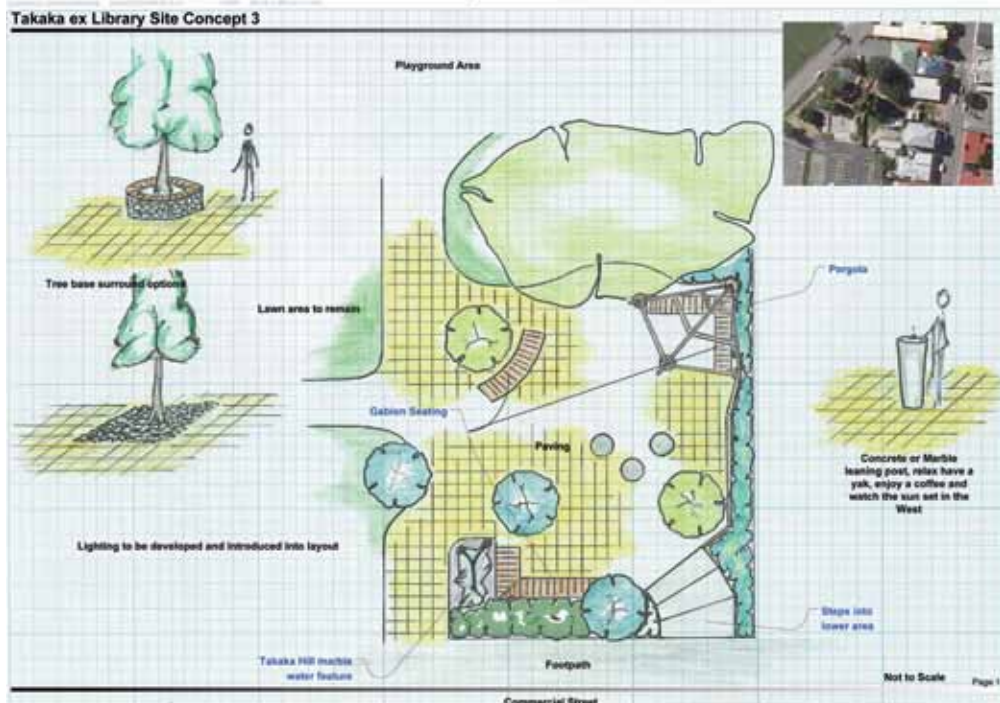
Enquire Now!

58 Gladstone Rd, Richmond. Ph: 03 5439057, Freephone: 0800 ALLFLOW, Email: wastewater@allflow.co.nz, Web: www.allflow.co.nz

Option 2 incorporates a small stage, a water feature along the boundary fence, an art feature and a timber sleeper front wall. As with all options, the paved area will include replacing the existing pathway to where it meets the art path.

Option 3 has two entry points from Commercial Street, raised planters, seating (both standalone and around base of trees), leaning/resting poles to enjoy your coffee, trees, open pergola, and water feature made from Takaka Hill marble.

The final look of the site is now over to Golden Bay residents. Drawings of all three options are available as a download from the Council website, and are on display in the Takaka Library or Takaka Service Centre, 78 Commercial Street. You can make a submission online, by post, or by email to info@tasman.govt.nz before 5.00 pm Wednesday 24 October 2012. Feedback forms are also available at the library and Service Centre.



Motueka firefighters clock up century

They started fighting fires in 1912 with a "chemical engine" that poured more chemicals onto them than the flames. They now have two high-tech engines, a rescue tender and skills that are the equal of big-city professionals. They will race from their beds at 2.00 am in the filthiest weather – and they do it all for the love of their community.

Motueka Volunteer Fire Brigade celebrates its centenary at Labour Weekend, which is sure to involve much reminiscing about the big ones such as the Unilever blaze, the huge Kaiteriteri bushfire in '83, the aircraft that crashed into a house, the arson spree of 1997, and a race over the hill to Takaka to help fight the Fonterra blaze.

Public celebrations of the centenary begin with a parade down High Street at 11.15 am on 20 October 2012. The action shifts to Decks Reserve for fire truck displays, a kitchen fire demonstration, a visit at 12.30 pm by the Nelson-Marlborough rescue helicopter, plus a bouncy castle and free icecreams for the kids. Past and present firefighters, their families and friends will gather in the evening for a dinner-dance.

TV takeback in Murchison

Tasman District Council, with assistance from the Ministry for the Environment, will be offering a TV recycling service for residents of Murchison and surrounding areas. This service is timed to coincide with the recent switch to digital in Hawke's Bay and the West Coast.

The programme is being funded via the Government's Waste Minimisation Fund. Money for the Waste Minimisation Fund comes from a waste levy charged on material disposed of at landfills.

From 13 October until 28 October 2012 the recycling service will be free of charge and from 29 October 2012 until the end of March 2013 the cost of disposal will be \$10 per television.

Televisions will be accepted at Council's Resource Recovery Centre at 41 Matakaitaki West Bank Road, Murchison. The site is open 1.00 pm to 4.00 pm on Monday, Wednesday and Saturday.

Televisions collected will be packaged and transported to Christchurch for processing by RCN New Zealand.

The TV TakeBack programme aims to divert up to 500,000 televisions from going to landfill. It is an initiative that involves the Government partnering with a range of recyclers and retailers to provide a nationwide network of subsidised options. Tasman District Council is working with Fulton Hogan, and RCN e-cycle at this stage of the project. As the digital rollout continues into Nelson-Tasman in the new year, Tasman District and Nelson City Council to identify further recycling options for old televisions.

More information: www.e-cycle.co.nz/ or www.tvtakeback.govt.nz/

Recycling bins for Christmas



Believe it or not the summer holiday period is fast approaching, and this is traditionally Council's busiest recycling period. For many households a single recycling bin is not enough and so Council is making it easier for everyone to get hold of an extra bin. It's much easier and safer for our contractor if materials are in an official bin - cardboard boxes and fish crates are not really suited to the job.

Each household within the rating area for recycling is entitled to two recycling bins and extra bins are now also available from Council Service Centres as well as Council's Resource Recovery Centres.

If you're looking for rubbish bags, these are also available at Council Service Centres, and now come in two sizes: the original small white bags and now also the big yellow bags.

So next time you're at Council you can pick up rubbish bags and an extra recycling bin for the summer holidays.

Communityrecreation

SPARC Rural Travel Fund

The aim of the fund is to subsidise rural sports teams travel costs, for 5 -19 year olds, to enable them to take part in regular competition.

Applications close 31 October 2012.

Tasman Creative Communities Scheme

The aim of the fund is to support local projects that increase access and participation in arts activity.

Applications close 10 November 2012.

Take A Kid Biking

The Get Moving Active Communities project brings you "Take a Kid Biking", an intergenerational beginner's guide to Mountain Biking (MTB).

What – The four session course is set up as a chance for adults and children to learn together. Local MTB instructors will provide tips and guidance to ensure it's not only fun but also that you gain the skills and confidence to get more out of your riding experience. Adults need to register as a team - adult and child. Sessions will be spilt by the gender of the adult with instructor/student ratios kept as small as possible.

Where – The "Take a Kid Biking" sessions will be held at Conifer Park, Rabbit Island; Codgers Park (Brook Valley) and at the Kaiteriteri Mountain Bike Park.

Sessions will cover:

- Learn about your bike - how to set up and maintain it, essential tools etc
- Learn and practise fundamental skills

• Learn about and ride the MTB tracks in Nelson Tasman.

When – Start date for adult women will be on Wednesday 7 November 2012 from 6.00 pm – 7.30 pm and running on Wednesday 14 and 21 November 2012. The final ride at Kaiteriteri will be on Sunday 25 November 2012, 2.30 pm – 5.00 pm.

The adult male course will run from Thursday 15 November 2012 starting at 6.00 pm -7.30 pm and running on Thursday 22 and 29 November 2012. The final ride at Kaiteriteri will be on Sunday 2 December 2012, 2.30 pm – 5.00 pm.

Who – "Take a Kid Biking" is for beginner MTB riders - if you are already a competent mountain biker this course isn't for you, but you do need to be able to ride a bike!

Adults need to bring a child aged between 8 -16 years.

The classes are limited to 24 participants - first in first served.

How – "Take a Kid Biking" is free. This is thanks to the support of the Get Moving Active Communities project and Avanti Plus Richmond.

Register at Avanti Plus Richmond
203 Queen Street, Richmond
Phone: 03 5445429
E-mail: richmond@avantiplus.com

Neighbours Day 23 – 24 March 2013

Neighbours Day 2013 - save the date, spread the word!

Getting to know the people you live next to is the first step in turning your street into your

neighbourhood. There are resources including suggestions of possible events and activities on the Neighbours Day website – www.neighboursday.org.nz

What you do makes a difference in your neighbourhood.

Tasman's Got Talent

Do you have a special talent? We want to see it! Registrations are currently being accepted for Tasman's Got Talent. Visit www.jamonline.co.nz/tasmansgottalent for more information and to sign up.

Tasman's Got TALENT

GOLDEN BAY
Saturday 27 October 2012, 10.00 am
Takaka Recreation Reserve

MOTUEKA
Saturday 3 November 2012, 10.00 am
Motueka Memorial Hall

RICHMOND
Saturday 10 November 2012, 10.00 am
Richmond Town Hall

For more information, competition terms and conditions, and to pre-register:
Paul McConachie
Ph. 03 543 8525
✉ paul.mcconachie@tasman.govt.nz
www.jamonline.co.nz

FIRST PRIZE IPAD2

Photo by Gail Communications

tasman district council | tasman youth council | The Canterbury Community | 888

HOME BUILDER OF THE YEAR. AGAIN.



Why more New Zealanders trust G.J. Gardner Homes to build their homes... year after year.

G.J. Gardner Homes is a network of individual owner-operated businesses, so you get all the advantages of dealing with local people in your community, backed by the resources, buying power and security of a large, national group.

As our customers have discovered, it's a combination that provides the best of both worlds: excellent value as well as genuine commitment and service.

It's just one of the reasons why more people have built with us over the last five years than any other builder.

NELSON
195 Queen Street, Richmond
Phone: (03) 543 9502
OPEN Mon to Fri 9am-5pm

SHOWHOMES
3 Taranaki Place, Richmond
22 Daelyn Place, Richmond
OPEN Mon to Fri 11am-4pm
Sat & Sun 1pm-4pm

GJ-HBY-657-NL0710A

Newslineupdate



join our community:
Twitter • Facebook • Website

Public Notices

Resource Management Act 1991

Tasman Resource Management Plan

Proposed Plan Changes 37

Richmond West and South Greenway Renotified

Council has prepared amendments to the Tasman Resource Management Plan, known as Proposed Plan Change 37, which clarifies the appropriate zoning of lands forming the Richmond West and South Greenway which is to be progressively acquired and managed as urban open space to support stormwater drainage, recreation, aquatic ecosystem and active transport values in the future urban setting of the network.

Council publicly notified this Change on 18 August 2012 with a closing date of 15 October 2012. However, in order to allow those not originally notified the same opportunity to lodge a submission, Council has agreed to extend the period for making submissions for a further four weeks.

Submissions

Any person may make a submission on any part of the proposed Change. Submissions can be sent to the Manager Policy, Tasman District Council, Private Bag 4, Richmond 7050 to be accepted by **Council** for a *period* closing at 4.00 pm on Tuesday 13 November 2012. Forms for making submissions are available as indicated below under "Availability of Proposed Changes". Submissions must be in writing, clearly indicating support or opposition to the provisions, the decision that the submitter wishes the Council to make (with reasons),

whether or not the submitter wishes to be heard in support of the submission and an address for service or contact address.

Consideration of Proposed Amendments

After submissions have closed, Council will publish a summary of all decisions requested by submitters. There will be a further period of 10 working days within which further submissions in support of or opposition to those submissions made may be sent to Council. Council will then hold hearings on all submissions and all submitters may be heard. After the Council considers the submissions and makes its decisions, any submitter who is not satisfied with the decision has the right of appeal to the Environment Court.

Availability of Proposed Amendments

The proposed amendments are available to view at Council's Richmond Service Centre or online at www.tasman.govt.nz/link/trmp-proposed-changesSubmission forms are also available.

For more information or advice on these amendments, please contact Neil Jackson Ph. 03 543 88485 or Email neil.jackson@tasman.govt.nz or Steve Markham Ph. 03 543 8427 or Email steve.markham@tasman.govt.nz

Wai-iti Catchment Water User Meeting

There is a meeting for all users of water supplied through the Wai-iti Community Dam:

Date – Tuesday, 30 October 2012

Time – 7.00 pm - 9.00 pm

Venue – Wakefield Village Hall

Address – 10 Whitby Way, Wakefield

Your attendance is welcomed. An update on various aspects of the Wai-iti Community

Dam, and management of water in the Wai-iti Catchment are to be covered at this meeting. For all enquiries regarding the 30 October 2012 meeting contact:

Joseph Thomas on Ph. 03 543 8494 or Jeff Cuthbertson on Ph. 03 543 8438.

If you are unable to attend but would like to register an apology please contact Valerie Gribble, Ph. 03 543 8453, Email valerie.gribble@tasman.govt.nz Minutes following the meeting can be circulated if requested.

Community Notices

Wakefield School Twilight Gala

Saturday 27 October 2012, 4.00 pm – 7.30 pm, Wakefield School, Edward Street, Wakefield.

Funds raised will go towards the purchase of new computer equipment for the school.

Please note the gala will run wet or fine!

Council Meetings

Agendas and Minutes for Council Meetings can be viewed on Council's website at www.tasman.govt.nz

Communications Subcommittee – Motueka Office, 7 Hickmott Place, Motueka, Tuesday 30 October 2012, 9.30 am. No public forum

Environment and Planning Committee – Tasman Council Chambers, 189 Queen Street, Richmond, Thursday 1 November 2012, 9.30 am. Public forum

↓
Healthy, well-maintained trees add value, serenity and beauty to your landscape.

↓
Keep your trees in top health and looking their best, with qualified arboricultural care.

↓
Pruning for health, shape, light, views and safety.

↓
Phone Treescape for a free quote – 30 years experience in caring for NZ's finest trees.

0800 TREESCPE (873396)
Cell 027 477 7154
dominicw@treescape.co.nz
www.treescape.co.nz

Caring for your trees:

- * For summer shade
- * For cleaner air
- * For sound reduction
- * For beauty in all seasons
- * To bring birds
- * To add value to your property



Roadside mowing costs trimmed

Council has adjusted its roadside mowing regime, cutting less often and freeing up funds for other projects. From now on verges will be trimmed twice a year. In the past cutting was based on grass height, and might be trimmed three or four times a year, says Transportation Maintenance Engineer Selwyn Steedman.

The mowing will take place in October and February, although that may vary according to growing conditions. In built-up areas, the grass will not be cut if it is less than 10cm high, and in rural areas 20cm high.

"We are allowing the grass to grow longer before we mow it." That has a safety spinoff in giving better visual definition to the edge of the road, says Selwyn.

The contractor mows to 1.5m back from the road edge.



Outstanding Community Service Awards

Tasman District Council saluted six tireless volunteers recently with Outstanding Community Service Awards. In this issue we profile a couple of Motueka stalwarts, Anne Inglis and Glenis Leppien.

Anne Inglis is typical of award recipients when she cries, "Oh my goodness, why me?" It starts with more than three decades of voluntary work for the Motueka Red Cross. She is still the treasurer, and helps to organise fundraising for the Annual Appeal and Rose Day.

Anne has been her husband Jack's dedicated private secretary helping with the Motueka community hospital, aged care unit and hospice. It opened three years ago to universal acclaim, but the fundraising is ongoing and a new \$2m, 28-bed wing is about to open.

Anne is a staunch member of Inner Wheel, the women's voluntary service organisation that began as an offshoot of Rotary. Its projects include sewing "silky pillows" for breast cancer patients at Nelson Hospital.

She belongs to the Community Care Group in Motueka, helping the elderly and those who live alone. The group provides a Christmas

dinner and a mid-winter afternoon tea for up to 150 people.

Anne says she enjoys her voluntary work. "I've met some wonderful people and had some wonderful times."

"I feel we live in a very special part of the country."

Fellow award recipient **Glenis Leppien** agrees. Motueka is "a very resourceful place; a very caring place – if you want help you'll get it," she says.

The former nurse visits the elderly, runs them to appointments, and whatever else needs doing. They say charity begins at home, and with Glenis it is literally true. When Newsline rang, she had just hosted the "silky pillows" working bee. In the past she welcomed the "Motueka Pool Club" on Tuesday afternoons, where the cuppa and company were more important than the score for the elderly members.

Glenis's nomination for the award cited a long list of service: foundation member of the Lioness Club of Motueka in 1984 (served as both president and secretary); Inner Wheel (president); fundraises for the Guide Dog

Association, IHC, SPCA, therapeutic riding, the prem unit at Nelson Hospital, St John Ambulance, the Jack Inglis Friendship Hospital, the Rescue Helicopter, Red Cross and Plunket.

She used to co-ordinate the hot meal service for patients in the Alzheimers Group daycare, was involved in the Bridal Gown contest, now centred in Nelson, and the mid-winter swim, which is now run by Riwaka School.

Glenis works alongside Anne in the Community Care Group.

The nature of her community involvement changes, and more organised groups exist now, she says, but "there's always someone who needs support."

Like Anne, Glenis feels plenty of other helpers deserve the award. Community service is "just natural" for her. "I'm not a materialistic person, and never have been." She grew up with "very caring" parents, particularly her mother, and she is grateful for a supportive family who welcome in the strangers and are unfazed when they arrive home to find boxes of jars left by the front door. Just another one of Mum's projects, they shrug.



- ♣ Septic Tanks
- ♣ Grease Traps
- ♣ Farm Ponds
- ♣ Winery Waste
- ♣ Bulk Liquid Waste Transport
- ♣ Submersible Pumps

Ph 0800 2 FLUSH (35874) 24hrs ♣ info@astroenvironmental.com ♣ www.astroenvironmental.com

