



UNSUNG HEROES RECOGNISED

*Front row from left: Beverley Clementson, Beverley Jensen, Shirley Lunn, Lois Tunnicliff, Barry Bartlett, Beverly Dyke, Elaine Wilson
(back row from left): Mayor Richard Kempthorne, William Rickerby, Lester Royds, Peter Woods, Murray Rogers,*

Eleven 'unsung heroes' of the Tasman community received some well-deserved recognition at the 2011 Tasman District Council Outstanding Community Service Awards.

At a ceremony held at the Tasman District Council Chambers on 12 August 2011, Mayor Richard Kempthorne said the awards were aimed at "recognising the host of people throughout our District who work away quietly without pay and with precious little recognition to make our communities better places to live. Our communities simply couldn't function without the work of volunteers like these," he said.

The Outstanding Community Service Awards are an annual event and nominations close on 30 June each year. Nominees must be residents of the Tasman District and have been involved in a range of voluntary activities that have benefited their communities for 20 years or more.

2011 Award Recipients were:

Richmond/Waimea

Barry Bartlett
Lois Tunnicliff
Lester Royds
William Rickerby

Golden Bay

Murray Rogers
Peter Woods
Beverley Jensen

Motueka/Moutere

Shirley Lunn
Elaine Wilson
Beverley Clementson
Beverley Dyke

We will feature further details about each of the 2011 Award Recipients in upcoming issues of Newsline.

THIS WEEK:

05. Recycling advice

02. Get ready, get thru

07. 'Green' farming a winner

03. A4A - accessibility for all

09. New heights in playground fun

MAYOR'S COMMENT

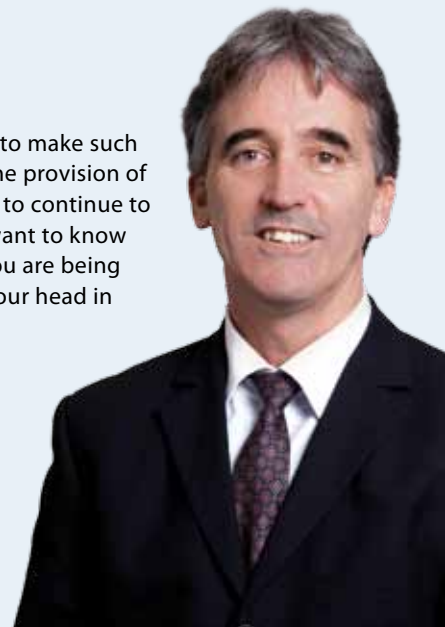
By the time you read this the Council's submission regarding the Local Government Commission's Draft Reorganisation Plan will have been delivered. You will find it on the Council's website and in offices and libraries.

While focusing on the key issues regarding the loss of representation and the cost effectiveness of the proposed changes, the submission also asks the Local Government Commission to provide more information if they decide to prepare a final proposal for a poll of electors in both Tasman and Nelson.

The proposal has always been short on the specifics and any further requests for such information have been met with the response, 'that is the decision of the new Council'. Quite frankly, it is too late then.

Nowhere else are people asked to make such a significant decision without the provision of such information. I urge people to continue to demand the information they want to know – asking for it does not mean you are being intransigent, nor do you have your head in the sand.

Mayor Richard Kempthorne



GET READY, GET THRU

Tasman District residents are better prepared than most for an emergency, according to the results of a national survey.

The poll, conducted by Colmar Brunton on behalf of the Ministry of Civil Defence and Emergency Management, found that 37% of Nelson, Tasman and Marlborough residents were fully prepared for emergencies compared with the national average of just 18%. Local residents were also more likely to be prepared at home for emergencies – 51% compared to the national average of 32%.

The trend over time is very positive for Top of the South residents, with over 80% having an emergency survival kit, compared to only 43% of local residents in 2010 (national average 63% in 2011).

Regional Emergency Management Manager Roger Ball says that the past 12 months have been extremely demanding for Civil Defence in the region with earthquakes and major floods, however, this poll

result was a very welcome sign that the 'Get Ready, Get Thru' message is being heard.

"The recent events are obviously still fresh in householders' minds as we continue to have high demand to provide speakers at events and for advice with civil defence planning", Mr Ball says. "Places like Tapawera, Mapua, Marahau and Wakefield are all doing community response plans. Murchison's plan is done and Golden Bay has just reviewed theirs. With the recent planning and an impending exercise in St Arnaud, the office is very busy, but it's good to know our communities are taking their preparation seriously."

For information on how you can ensure you and your family are prepared for an emergency go to www.getthru.govt.nz



Find out why ... more businesses are choosing NBS

- Fast, efficient and personalised service
- Tailored packages with lower fees
- Easy access to local Branch Managers



TONI LANE
BRANCH MANAGER
207 QUEEN STREET, RICHMOND
03 543 8203

NEW ZEALAND'S
OLDEST
BUILDING SOCIETY

NBS
NELSON BUILDING SOCIETY

SERVICE TO THE NELSON
& TASMAN COMMUNITIES
149
YEARS



HOWIE TIMMS
BRANCH MANAGER
185 HIGH STREET, MOTUEKA
03 528 1112



Donna Smith tests the beach buggy.



The beach mat being trialled at Rabbit Island.



A4A - ACCESSIBILITY FOR ALL

Beach accessibility for the disabled has been high on the agenda at recent meetings of the Accessibility For All Forum.

Tasman District Council's Community Recreation Advisor, Mike Tasman-Jones, hopes to have found a solution in the shape of an accessible beach mat that has been used by a research student at the University of Auckland. The mat, which is 10 metres long helps those with mobility difficulties get over the soft sand and on to firmer sand. However, the huge tidal range on Tasman Bay beaches might cause some issues. This can be seen at Rabbit Island, where sand under the ramps down to the beach has been washed away.

Tasman District Council intends to trial the viability and effectiveness of the beach mat at Rabbit Island over the summer holidays to see how well it works and how it stands up to Tasman's environment. It will be located at Access point 8, which is also close to an accessible toilet. Public feedback will be welcome.

Donna Smith, a member of the forum and a wheelchair user, managed to loan an accessible beach buggy from the CCS Disability Action group based in Christchurch. These beach buggies cost about \$3000 each. CCS Disability Action loans the buggy to people with mobility issues who wish to access the beaches. Donna and Sarah Downs, who

manages the Accessibility for All Forum, trialled the beach buggy at Tahunanui Beach in early August 2011.

Donna commented that the wheels gave her a smooth and secure ride on to the beach whilst Sarah, Donna's helper for the day, said she felt quite comfortable pulling the buggy along the sand. Both felt it was a great way to make the beach more accessible for people who have limited mobility.

Forum members suggested it would be fantastic if beach buggies were available to hire or loan in the Tasman and Nelson area. One member of the forum was very excited about the opportunity to use a buggy and get back on to the beach again after many years of being in a wheelchair. Donna also felt the buggies were something the local swimming pools could look into using as she personally did not like being lifted into a pool by a hoist.

For further information about the Accessibility For All forum, contact Sarah Downs on Ph. 03 543 8542 or email sarah.downs@tasman.govt.nz. Accessibility for All meets each quarter. The next meeting will be held at Tasman District Council in Richmond on 4 November 2011.

(MATTHEWS) Eyewear. Eyecare.



Nelson 1 Buxton Square
03 548 3249



Richmond 211 Queen Street
03 544 4319



Blenheim 82 Market Street
03 578 5880



Motueka 217 High Street
03 528 8724

www.matthews.co.nz



Life isn't always a bed of roses - but it shouldn't stink! Got a bad smell in your street or a broken sewer pipe?

Give Customer Services a call on Ph. 03 543 8400 24hrs a day, seven days a week and we'll arrange to get it fixed.



Connect with Customer Services

FOUR CANDIDATES FOR GOLDEN BAY SEAT

Four people will contest the Golden Bay Ward seat on the Tasman District Council vacated recently by long-serving Councillor Noel Riley due to ill health.

The by-election candidates are, in alphabetical order:

- **Laurence Boomert**
- **Sue Brown**
- **Paul Sangster**
- **Mik Symmons**

The successful candidate will join Cr Martine Bouillir to represent the Bay. Voting papers for the postal ballot will be delivered to all ratepayers and residents listed in the Electoral Roll for the ward, between Monday 12 September 2011 and Saturday 17 September 2011. Completed voting papers must reach the Electoral Officer by noon on Wednesday 5 October 2011. A preliminary result will be available almost immediately.

Only those people on the roll will receive voting papers or be entitled to vote. More information is available at www.tasman.govt.nz and from Lloyd Kennedy, Electoral Officer Ph. 03 543 8434 or Sandra Hartley, Deputy Electoral Officer Ph. 03 543 8554.



Laurence Boomert.



Sue Brown.



Paul Sangster.



Mik Symmons.

HOME BUILDER OF THE YEAR. AGAIN.



Why more New Zealanders trust G.J. Gardner Homes to build their homes... year after year.

G.J. Gardner Homes is a network of individual owner-operated businesses, so you get all the advantages of dealing with local people in your community, backed by the resources, buying power and security of a large, national group.

As our customers have discovered, it's a combination that provides the best of both worlds: excellent value as well as genuine commitment and service.

It's just one of the reasons why more people have built with us over the last five years than any other builder.

NELSON

195 Queen Street, Richmond
Phone: (03) 543 9502
OPEN Mon to Fri 9am-5pm

SHOWHOMES

3 Taranaki Place, Richmond
22 Daelyn Place, Richmond

OPEN Mon to Fri 11am-4pm
Sat & Sun 1pm-4pm

GJ-HBY-657-NL070A

0800 42 45 46
www.gjgardner.co.nz

Sign up in 2011 and go into the \$100,000 cash draw *Conditions Apply

G.J. Gardner. HOMES

RECYCLING ADVICE JUST A CLICK AWAY

How do you recycle agri-chemicals or dental amalgam, your old cellphone or supermarket bags? Waste Education Services (WES), co-sponsored and co-funded by Tasman District and Nelson City Councils and run by the Nelson Environment Centre, can give you the answers. The service supports businesses, schools and the community in reducing and recycling waste.



More than half of the rubbish thrown into landfills is from business, and much of it could be reused. The A-Z Recycling Guide on the WES website (www.wes.org.nz) now offers businesses practical advice on how to reduce their waste. The guide covers electronic goods, batteries, glass, gas bottles, cardboard and much more.

"The website is the first point of call," says Karen Driver, Waste Manager of the Nelson Environment Centre. If businesses need further help they can phone the Environment Centre staff.

The Centre also works alongside Council staff to support 'Enviroschools', which now number 27 in the Nelson/Tasman region, covering nearly 8000 students. Centre staff will do 'waste audits' and advise on dealing with green waste and foodwaste. The focus is on educating both students and teachers.

These business and school initiatives flow through to the general community because "everyone goes home at the end of the day," says Karen.

Community educator Mary Curnow takes the 'reuse and recycle' message to schools, businesses and public events. She will identify problems in a school and help to set up systems to minimise the amount of waste going to landfill.

Mary is working with three large businesses at present, identifying how materials can be recycled, and even looking

at 'procurement policies' – heading off potential rubbish before it enters the building.

The recycling message goes out into the community through home composting workshops and roadshows under the Create Your Own Eden scheme. Roadshow stalls have been held in Richmond, Motueka and Takaka.

Mary also administers Tasman District Council's Zero Waste Grants, which are available to schools, early childhood centres, businesses and community groups in the District for either specific waste reduction projects, or to educate people. For instance a school can apply for funds to set up a worm farm or buy composting bins.

The Wholemeal Café in Takaka received a grant to set up an 'eco-pod', recycling everything from plastic milk bottles to leftover food.

Three rounds of the Zero Waste Grants are held each year for funding requests of \$999 or less. The next closing date is Monday 26 September 2011 (end of Term 3). You can download application forms from www.tasman.govt.nz. A funding round for more expensive projects is held once a year. The next will be in 2012.

Karen says the Waste Education Services website is also used by many people and organisations from far outside the district. For more information on WES or Zero Waste Grants go to www.wes.org.nz.

Allflow WASTEWATER

High Quality, Efficient, German Designed & Engineered Wastewater Treatment Systems

Domestic, Commercial and Industrial Packages
From 4 person/day to 1000 person/day Systems

[Enquire Now!](#)

58 Gladstone Rd, Richmond. Ph: 03 5439057, Freephone: 0800 ALLFLOW, Email: wastewater@allflow.co.nz, Web: www.allflow.co.nz

GET A WARM, COMFORTABLE, HEALTHY HOME



The Government's insulation and heating programme Warm Up New Zealand: Heat Smart has seen over 115,000 Kiwi homes install insulation or efficient heating over the last two years. If you aren't one of them then you could be missing out.

Some facts you should know about insulating your house:

- Insulating prevents dampness and mould invading your home or rental property, and a dry home is a healthier home that is cheaper to maintain.
- A typical Kiwi home without insulation loses at least 50% of its heat through the ceiling and the floors. Insulating helps make your home warmer, more comfortable and can save you money on your energy bills.
- You can save 1/3 off the cost of insulating your home and once you have adequate insulation you can receive a further \$500 in funding for an efficient heater.
- Once the ENERGYWISE funding has been subtracted, you can pay the remainder through your property's rates. This gives you an affordable way to have a warmer, healthier home.
- An approved heater produces little or no air pollution, is efficient to run and helps to reduce air quality problems, which is especially relevant in the Richmond airshed.

Whether you own your home or you rent, you shouldn't have to put up with a cold, damp house over winter again. Less damp and mould can reduce maintenance costs and help improve the value of your property.

The offer for homeowners and landlords:

- If you are a homeowner or a landlord and your property was built before the year 2000 you can get ENERGYWISE funding of 33% (up to \$1300) off the cost of insulating your property and \$500 towards an efficient heater.
- To make having a warm and healthy home even easier, you can add the additional cost, up to \$2,600, (for insulation) and/or \$3,500 for the efficient heater, to your rates – and can pay it off over a period of 9 years!

For example, if the insulation cost \$1300, with interest that would currently cost approximately \$50 on top of your quarterly rates bill.

- If you are a homeowner with a Community Services card or a landlord with a tenant holding a Community Services card, you may be able to get ENERGYWISE funding of 60% off the cost of insulating. However the 60% funding is limited so make sure you check this with the insulation provider(s).

- If you are a tenant, ask your landlord about insulating the property.

Visit tasman.govt.nz/link/warmhome or call Ph. 03 543 8400 for more information about the offer. To find a provider now for a free no-obligation quote, call ENERGYWISE on Ph. 0800 749 782.





SEPCLEAN
LIQUID WASTE
Environmentally safe waste disposal specialists



Motueka (03) 528-7349
Richmond (03) 543-8248
Fax (03) 543-8247
Email sales@sepclean.co.nz
PO Box 3389, Richmond
Freephone **0800 725 326**

Septic tanks, sumps, grease traps and other liquid waste

Desperate to find practical, down to earth and affordable legal advice on **subdivisions?**

Diane Marshall
can help
Ph 03 544 7888



KNAPPS
LAWYERS
22 Oxford St, Richmond



'GREEN' FARMING A WINNER

When you are next out at Cable Bay, take a closer look at the picturesque farm on Pepin Island, where native bush regeneration and pest control have created an award-winning environment amid testing coastal conditions.

Over the last 15 years farm manager Andrew Newton and team have enriched biodiversity and the landscape, including smartening up the farm buildings. Gains include weed and pest management, soil conservation and coastal margin protection. Native bush nestles in the gullies between rich-green paddocks. Good stewardship has nurtured and enhanced productive farmland.

The Pepin Island Sheep Station won the Rural prize in last year's Tasman Nelson Environment Awards. The farmer is happy to host visitors, but please contact them first on Ph. 03 545 1440 or email pepin@scorch.co.nz

Rob Francis, Tasman District Council's awards coordinator, says many people and groups are doing amazing, innovative work to build strong communities and a healthy environment, "but they see it as nothing out of the ordinary". The Environment Awards "not only

allow us to recognise their efforts and give them a chance to win both financial and community recognition, but also to share their knowledge with others."

The awards are open for nominations (and self-nominations) until Friday 16 September 2011 in eight categories:

- Sustainable Design
- Commercial
- Best Use of Renewable Energy
- Schools
- Heritage/Culture or Heritage/Sites
- Rural
- Environmental Leadership
- Community Groups

Visit www.tasman.govt.nz to download a nomination form (or two) and make sure you return it by 16 September 2011.

FUNDING FOR ECO-FRIENDLY BIKERS

"It's not a race," says Ihatove trial riding promoter Stephen Oliver. The motorcycle riders pick their way carefully through rugged terrain, losing points if they put a foot on the ground. Low-pressure tyres and quiet motors make it "the most eco-friendly" motorsport.

In 2010, Stephen and wife Deborah ran the first Ihatove trial event outside of Japan, financing it themselves. Japanese devotees had approached the bike-loving family to stage an event because the main Idemitsu ride back in Japan was attracting about 800 participants and they wanted to test that level of interest in New Zealand.

Stephen says Tasman District Council got in touch with the family wanting to be part of the sport-tourism event, held on rural properties at Wakefield, and to help secure its future in the District. This year the Council gave \$1500 from its Community Development Fund to assist with costs.

The next Ihatove motorcycle event is in February 2012. Stephen says they hope to build towards 150 participants, but it's more about the quality of the event than numbers. Half a dozen riders will come to the District to take part in the event from Japan and Britain.

Because of the slow nature of the ride, injuries are low. Ihatove aims to be a lifelong source of fun for both amateurs and highly skilled riders.

Another recent group to benefit from Council's Community Development Fund is the Mapua Boat Club, which received \$2868 to refurbish photos and photoboards in its museum on Mapua Wharf.

The Community Development Fund allocates about \$20,000 a year in two disbursements. Applications close on 31 October and 30 April each year. The grants provide assistance for projects that demonstrate clear public benefit and support, plus contribute to social, economic, environmental and/or cultural development.

Applicants must be from non-profit organisations and the projects must be for charitable purpose. Projects in communities with a population of 4,000 or less receive priority.

Application forms are available from Council's office, Service Centres and the website, www.tasman.govt.nz



PROFILE: SARAH DOWNS TRANSPORTATION PLANNING OFFICER

What is your main role?

My role at Council is increasingly varied. One of my main areas of focus is school travel planning. This is also a cross-over role with Nelson City Council. I am also involved in numerous other projects, including the Motueka Flood Control Project. I manage the Accessibility for All (A4A) forum, which is a very proactive group. Currently I am involved in an exciting project called Ride On. Ride On aims to improve cycling skills and reduce cycling crash statistics across the region.

What are the common challenges you encounter?

Trying to create a 'fix' that pleases everyone can be challenging. Sometimes it just isn't possible to do that, but it is great when you can.

Are there any misconceptions getting in the way?

Some people think that there are limitless funds to solve all problems.

It would be great if there was but it means we have to be more creative with our solutions or coming up with more affordable ideas.

What's the most curly question or situation you have encountered recently?

I have on the very odd occasion been on the receiving end of verbal barrages, but I accept it isn't personal.

What's the most satisfying part of your job?

Hoping that the work you have done makes a difference. I relish new challenges and developing my skills. Every day is different and I enjoy meeting lots of new people.

Tell us your favourite hideaway in Tasman District.

I love the peace and calm of Te Waikoropupu Springs but also enjoy the wildness of Wharariki Beach.

PROMOTE YOUR SUMMER EVENT IN HUMMIN'

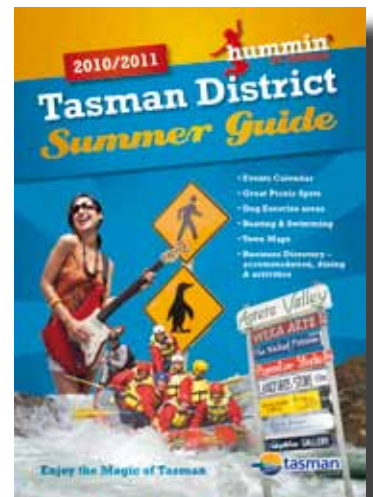
Would you like to promote your summer event to thousands of visitors and locals for free?

Every year, the Tasman District Council produces Hummin' in Tasman, a guide for locals and visitors to help promote the events, attractions and businesses of the Tasman District. 20,000 copies of Hummin' in Tasman are distributed free through i-Sites, libraries, Council offices, A&P shows, campgrounds, the Richmond Mall, Nelson Airport and other outlets across the region.

This year, event details (of events running between 1 November 2011 to Easter 2012 and based within the Tasman District) will be taken from the It's On website, www.itson.co.nz, the region's free events

guide. So if you want your event included in Hummin', make sure it's listed on 'It's On' before Friday 7 October 2011.

If you are unable to add details to the It's On website, please email through full event details to Mike Tasman Jones (mike.tasman-jones@tasman.govt.nz) at Tasman District Council before Friday 30 September 2011.






Quality from start to finish

Contact Fulton Hogan for all your contracting requirements:

➤ Site Works	➤ Retaining Walls
➤ Subdivisions	➤ Driveways
➤ Drainage	➤ Roading
➤ Asphalt Paving & Sealing	➤ Aggregate Supply

121 Bolt Road Nelson, Phone: (03) 547 9789
www.fultonhogan.com



NEW HEIGHTS IN PLAYGROUND FUN

When you have just completed a new playground, the equipment must be tested for safety. So Glenn Thorn, Tasman District Council Reserves Officer, and Rachel Pike, of the ASB Aquatics Centre, scaled the 7.5m height of the rope play tower recently to give it the final tick.

The structure is the only one in the Top of the South. Officially named Coronet Peak, it looks more like the rigging of an old sailing ship, the resemblance enhanced by 'crow's nest' type platforms around the central pole. A couple of swing seats at the bottom should amuse young ones while their more adventurous siblings clamber skywards.

The play area beside the swimming pool complex in Richmond also boasts a slide and 'basket swing'. Rachel predicts that the addition of seating it will be a popular lunchspot. Parents can munch away while the children play.

Installation and landscaping was carried out by Nelmac and Glenn is very pleased with the end result.



KARAOKE SUPERSTARS WANTED!

Could you be the Tasman District's next Karaoke Superstar?

The hunt is on again for the next 'Tasman Karaoke Superstar'. Last year's event attracted over 100 pop star wannabes across the District, who sang and danced through their quest to be crowned local karaoke kings/queens of the stage.

Ester Terrill (Nelson), Ella Atkinson (Richmond), Hannah Gibson (Upper Moutere) prevailed as karaoke champions in the junior, intermediate and senior sections respectively in last year's competition and will most likely return to defend their titles.

Four regional local heats will take place across the Tasman District over the coming months, with the Grand Final at the Motueka A&P Show on Sunday 4 December 2011. The competition will once again be split into

three age group categories, with Junior (8 years and under), Intermediate (9-12 years) and Senior (13-18 year) age groups likely to be tightly contested. 1st, 2nd and 3rd heat places will gain automatic entry into the Grand Finals.

The event is sponsored by Tasman District Council as part of the Council's commitment to providing creative outlets for young people to contribute to their local communities.

"There is a lot of great, young musical talent out there, and Tasman Karaoke Superstars is the perfect platform for these young singers to gain the necessary public exposure and confidence to launch their careers to the next level. I'm expecting this year's intake of contestants to surpass the already high level that last year's competition produced," said Paul McConachie, Community Recreation Officer at Tasman District Council.

2011 Tasman Karaoke Superstar dates:

Motueka – 16 September 2011, 5.00 pm, Motueka Recreation Centre

Murchison – 4 October 2011, 12.30 pm-1.15 pm and 3.00 pm-5.00 pm, Murchison Area School Auditorium

Moutere – 23 October 2011, 5.00 pm, Moutere Hills Community Centre

Golden Bay – 5 November 2011, 10.30 am, Takaka Village Green

Grand Final – 4 December 2011, 10.00 am, Motueka A&P Show

For more information contact Paul McConachie on Ph. 03 543 8525, or visit www.tyc.co.nz

Create a unique and meaningful farewell

Corner Salisbury & Champion Roads,
Richmond, www.wrfs.co.nz

544 4400



WAIMEA RICHMOND
FUNERAL SERVICES

NEWSUPDATE

PUBLIC NOTICES

Penalty Fees

Dog Registration forms were mailed out at the end of May to all dog owners on Council's database, with payment due by 1 July 2011. Council then allowed owners until 31 July 2011 to pay the standard registration fee.

All dogs that remained unregistered at the beginning of August have incurred a penalty fee of 50% on top of the standard urban or rural registration fee. Owners of these dogs have been sent an invoice with the penalty fee. This payment needs to be made as soon as possible.

Owners of dogs that are currently unregistered are advised to contact Dog Control at Council and register their dog(s) immediately.

Owner of any dogs that are unregistered after 01 September 2011 will be liable for a \$300 infringement fine for each dog plus the registration and penalty fee. Your dog(s) will also be liable for seizure.

Roadside Spraying

Contractors employed by New Zealand Transport Agency undertake an ongoing vegetation control programme to ensure that roadside vegetation does not affect the safety or operation of the region's state highway network. This programme includes the spraying of chemical herbicides including the following active ingredients: Glyphosate, Metsulfuron, Terbutyl-lazine and Triclopyr. Persons wishing to register their property as a 'no-spray' zone, which requires a commitment to maintain a property's highways frontage to specifications provided by NZTA, may do so by contacting Donna Hills or Stephanie Lawlor on Ph. 03 548 1099 at Opus International Consultants, Private Bag 36, Nelson.

Tasman District Council Grants From Rates

Tasman District Council allocates approximately \$164,000 for grants to community organisations. These grants are made to organisations whose services and projects provide wide community benefit and wellbeing.

Applications close 31 August 2011.

Application forms available from Tasman District Council offices or: www.tasman.govt.nz/council/grants-funding

ROAD CLOSURES

Closure of Roads to Ordinary Vehicular Traffic – Sunday Creek Road

Notice is hereby given that Sunday Creek Road (between Dovedale Road and the Motueka Valley Highway) will be closed to ordinary vehicular traffic for the month of September 2011 to enable Nelson Forests to carry out forest harvesting operations.

The road closure will have minimal effect on the public. The landowners in Sunday Creek Road have been separately advised of this closure.

Wangapeka River Road

Tasman District Council wishes to advise that Wangapeka River Road between Prices Clearing and Courthouse Flat will be closed for a period of two days between 20 August 2011 and 3 September 2011 for the purposes of pest control. The period of closure is weather dependent.

The area will be signposted and landowners in the area have been informed of this proposed closure by separate letter.

Further information can be obtained from Tasman Pest Control Ph. 03 542 4347.

COMMUNITY NOTICES

Appleby School Country Fair

Saturday 3 September 2011, 11.00 am, Moutere Highway.

Lots of fun for the whole family. Animal nursery, haunted house, wood chopping, bouncy castles, silent auction, plant, produce, clothing, book and white elephant stalls – bargains galore. Live entertainment and food stalls. Come and join us for a great day out.

St Peter Chanel School Spring Fair

Saturday 3 September 2011, 423 High Street Motueka.

Come along and shake off the winter blues with some entertainment and food in friendly surroundings. Giant garage sale, pony rides, face painting and lots more. 423 High Street from 10.30 am till 4.00 pm.



Brent Palmer
Professional Real Estate Consultant

027 544 9921
brent.palmer@raywhite.com
www.brentpalmer.co.nz
Licensed Salesperson (REAA 2008)

Ray White



If only we had called printhouse we wouldn't be in this mess

5000 Rack cards for \$550 +GST

NEWSUPDATE

COMMUNITY NOTICES

Social Health Seminar – Stroke Facts

Richmond Recreation Centre (Richmond Town Hall), Cambridge Street, Richmond. Tuesday 30 August 2011, 1.00 pm to 2.30 pm.

The seminar will cover:

- What Stroke Foundation Southern Region can provide to the stroke affected community and what the Field Officers' role is.
- What is a stroke?
- What does a stroke do?
- Stroke signs & symptoms (How to recognise stroke)
- Who can have a stroke?
- Rehabilitation
- Caregiver role
- Life after stroke

Followed by question time, afternoon tea & social time. All within a relaxed atmosphere.

Cost: GOLD COIN DONATION or free when you present your Club Recreation Concession Card.

Bookings not essential – just turn up on the day. All enquiries Ph. 03 544 3955.

Conservation Week: 10-18 September 2011

'Love New Zealand, Love Golden Bay'. Golden Bay's Welcome To The Godwits

9 September 2011: A Craig Potton talk on Golden Bay's Special Landscapes.

Craig Potton will give an illustrated talk. Senior Citizen Hall, Takaka at 7.30pm. Entertaining and popular, and not to be missed!

16 September 2011: Keith Woodley, Manager of the Miranda Shorebird Centre talk – 'Godwits, Long-haul champions'.

Keith Woodley will speak at an evening meeting on the subject of shorebird migration and visited key sites on the 'flyway' in Australia, Alaska, China and Korea. Senior Citizen Hall, Takaka.

More event details to follow as confirmed.

For more information contact Claire at Tasman District Council on email: claire.webster@tasman.govt.nz

COUNCIL MEETINGS

Agendas and Minutes for Council Meetings can be viewed on Council's website at www.tasman.govt.nz

Joint Shareholders Committee

Tasman Council Chambers, 189 Queen Street, Richmond, Friday 2 September 2011, 1.30 pm. *No public forum*

Environment and Planning Subcommittee (Norton Family Trust)

Tasman Council Chambers, 189 Queen Street, Richmond, Monday 5 September 2011, 10.00 am. *No public forum*

Environment and Planning Subcommittee (CBH Ltd)

Tasman Council Chambers, 189 Queen Street, Richmond, Wednesday 7 September 2011, 9.30 am. *No public forum*

Community Services Committee

Tasman Council Chambers, 189 Queen Street, Richmond, Thursday 8 September 2011, 9.30 am. *Public forum*

Regional Transport Committee

Tasman Council Chambers, 189 Queen Street, Richmond, Friday 9 September 2011, 10.00 am. *No public forum*

24 Hour Assistance – Phone your local office

Richmond Office	03 543 8400
Murchison Service Centre	03 523 1013
Motueka Service Centre	03 528 2022
Takaka Service Centre	03 525 0020

Tasman Newline The Mag is produced by Dry Crust Communications for Tasman District Council and is printed by Printhouse on recycled/recyclable paper. For advertising and editorial enquiries please contact Dry Crust on phone 03 544 4975 or fax 03 544 4951.



Motueka Valley Highway, Courtesy of Nelson Mail



HYPERCORE™

New Zealand's **BEST** performing Heat Pump in cold conditions

MITSUBISHI ELECTRIC

VISITORS TO TASMAN

KNOW THE CODE – BE SAFE ON OUR ROADS

Keep left

Always drive on the **left** side of the road. If you drive on the right side of the road in your own country, please remember to keep left when pulling out onto the road – it's easy to forget where you are!



No left turn on red

In New Zealand you may not turn left at an intersection when the traffic signals are red. If turning at traffic signals, give way to pedestrians crossing the road.

Giving way at intersections

Always use your indicators when turning.



Stop completely then give way to all traffic.



Slow down and be ready to stop and give way to all traffic.



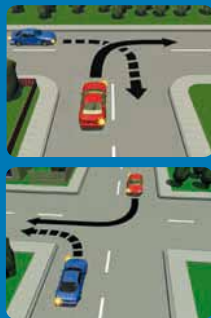
GIVE WAY

At an intersection where one vehicle will cross the path of another, and both are waiting on stop or give way signs (or where there are no signs), special give way rules apply.



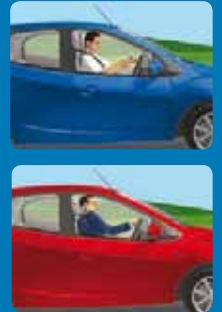
In general:

- if you're turning, give way to all vehicles that are not turning.
- in all other situations, give way to vehicles crossing or coming from your right.



Hand-held mobile phones

Drivers must not use a hand-held mobile phone when driving, unless the device is completely hands-free or mounted securely to the vehicle – and touched infrequently and briefly. Writing, reading or sending text messages on a mobile phone while driving is also illegal.



Safety belts

By law, everyone in the vehicle must wear a safety belt or child restraint – whether they're in the front or back. Children under five years of age must be secured in an approved child restraint.



Alcohol and drugs

Don't drink or use drugs and then drive – the laws against this are strictly enforced in New Zealand and penalties are severe.

WINTER SERVICE SPECIALS

MOVE UP TO A LEGENDARY DEERE 



RICHMOND EQUIPMENT

Your only Top of the South grounds care dealership
Sales • Service • Repairs • 18 years of friendly reliable service

56a Gladstone Road, Richmond • Ph. 03 544 6122
www.richmondequipment.co.nz

FREE INTERNET

Your first month is free when you switch your internet provider to Netsolutionz in August. It's easy, just call us today for details.



net solutionz
YOUR LOCAL INTERNET PROVIDER

Open 8.30am to 5.00pm
Network House,
Queen Street, Richmond

Ph. 03 543 9097 www.netsolutionz.co.nz

