

TASMAN GROUPS SHINE AT TRUSTPOWER COMMUNITY AWARDS

Tasman once again demonstrated it is a community in strong heart at the annual TrustPower Nelson Tasman Community Awards with Tasman groups scooping several prizes.

The TrustPower Nelson Tasman Community Awards are run in conjunction with Tasman District and Nelson City Councils. Competition was fierce this year with 116 nominations received.

The supreme award this year went to Nelson-based Students Against Violence Everywhere (SAVE).

Golden Bay Tennis Club won the 'Sport and Leisure' category for reviving the sport in the Golden Bay, while the Mapua Community Library was the Tasman District Overall Winner for their work hosting a successful literary festival in March that raised \$6,500 for the library.

Other local groups that were either runners up or received a commendation included: Friends of Labyrinth Rocks (runner-up, heritage and environment); Murchison and Collingwood Fire Brigades (commended, health and wellbeing); Saxton Field Sports Stadium Society (runner up, Sports & Leisure); Golden Bay Swimming Club (commended, Sports & Leisure) and Impact Trust Youth, Takaka (commended, Educational and Child/Youth Development).

In 2009 The Friends of Motueka Hospital Trust was named Supreme Winner at the prestigious TrustPower National Community Awards.

Right: Volunteer Sue Brillard (left) and chairwoman Dot Morriarty of the Mapua Community Library – TrustPower Nelson Tasman Community Awards, Tasman District Overall Winner.



Photo, Anna Pearson

THIS WEEK:

06. Staying safe on our roads

03. Big tick to refreshed library

09. Local Elections 2010

04. Civil Defence top performer

12. Where does your recycling go?



MAITAI LODGE DECISION TO INVOLVE THE COMMUNITY

The Council's Community Services meeting on 15 July 2010 received a petition from the Hope Residents Action group in relation to the current placement of the Maitai Lodge on the Hope reserve. The petition was asking Council to consider revisiting the decision regarding the location of the building.

The Residents Action Group has been expressing its discontent with the relocation of the building and Council has acknowledged, both in writing and at a recent public meeting, that even though the placement of the building met all the legal requirements, the wider ramifications of the decision should have been considered more fully before it was made.

The Community Services Committee, having received the petition and considered a staff report on the matter, have agreed that possible

alternative sites need to be identified either on or off the Hope Reserve and have charged the Community Services Chairman, the Richmond ward Councillors and the Mayor to work alongside the Hope Reserve Management Committee to manage this process. The process will list the pros and cons of each site, along with the current site, and will then hold a further meeting at the Hope Hall to explain these before providing the public with a further opportunity to play a role in the decision-making through a formal submission process.

The Committee also agreed to provide replacement trees for those that were removed to make way for the new tennis courts and to also provide a seat on which a plaque can be provided recording the fact that the trees were planted to commemorate the use of the former Ranzau School building by Scouts.

During discussion on this issue it was agreed that Council needs to look beyond the requirements of the law when decisions that may affect neighbours are made and as Councillor Stuart Bryant said "Issues such as this can tarnish the huge amount of good work accomplished by this Council".

HOME BUILDER OF THE YEAR. AGAIN.



Why more New Zealanders trust G.J. Gardner Homes to build their homes... year after year.

G.J. Gardner Homes is a network of individual owner-operated businesses, so you get all the advantages of dealing with local people in your community, backed by the resources, buying power and security of a large, national group.

As our customers have discovered, it's a combination that provides the best of both worlds: excellent value as well as genuine commitment and service.

It's just one of the reasons why more people have built with us over the last five years than any other builder.

NELSON

195 Queen Street, Richmond

Phone: (03) 543 9502

OPEN Mon to Fri 9am-5pm

SHOWHOMES

55 Champion Road

Phone: (03) 544 2795

4 Daelyn Road

Phone (03) 544 0010

OPEN Mon to Fri 11am-4pm

Sat & Sun 1pm-4pm

GJ-HBY-657-NL070A

0800 42 45 46
www.gjgardner.co.nz

G.J. Gardner. HOMES



CROWDS GIVE BIG TICK TO REFRESHED LIBRARY

Tasman District's revamped library is buzzing with energy as it captures the imagination of both new and old users.

The \$2.2 million refurbishment, six years in the making, has taken the facility into the digital age with a suite of Internet-ready computers, a news hub with newspapers and television feed, plus local historical material being digitised and placed online.

The showpiece Imaginarium is a soundproofed room where library users can edit short films, lay down video and audio tracks, or record music (keyboard supplied).

Customer Service Librarian Glennis Coote says the computers (Mac and PC) and recording equipment can also be used to create oral histories or scan and digitise family photos. The library's Waimea South collection of precious historical documents, such as birth, death, marriage and cemetery records, is being digitised via the Imaginarium. It will eventually be fed into the national Kete network "as a repository, so it keeps our paper copies safe", and also to make them accessible to anyone with a computer. The privacy of family histories or specialist group records can be safeguarded with a password.

Outside the Imaginarium, an egg-like "audio-visual chair" will play your iPod through speakers beside each ear. Glennis says it will soon be upgraded to screen DVDs.

All of this might make bibliophiles nervous, but Glennis says the traditional role of libraries as a store of books is much-enhanced in the new layout, with large shop-like displays of enticing titles, wide aisles and two "quiet spaces" with comfortable seating.

The Research Room is also a haven for careful contemplation of historic records.

Glennis returns to the retailing analogy, pointing to more of the stock, including magazines, CDs and DVDs, displayed attractively to catch the eye.

Browsers can even enjoy a coffee and cake while flipping through a magazine or book. (A courtyard is ready for when the warmer weather returns).

With school holidays in full swing, the chatter of young, excited voices underlines the success of the refurbishment for the next generation. A storyteller's couch is custom-made for group readings, and the Children's Library has grown.

Young adults have their own space equipped with internet access and study areas that can expand into the adjoining Barnicoat meeting room if needed.

That 50-seater room (named after pioneering woman journalist Constance Barnicoat) is available for hire to local groups, including after hours as it has a separate Queen Street entrance.

Glennis says the library's new rear access to the carpark has been much appreciated by borrowers, with after-hours drop-offs both there and via the Queen Street entrance.



Glennis Coote, Customer Service Librarian, tries out the audio chair beside the Imaginarium.

More than 1200 people flocked to the library on the opening half-day on Saturday 3 July 2010, and the first week was "very busy".

"We can also see that it's bringing a lot of different people in," says Glennis, affirming that the new library has "something for everyone", embracing the future while respecting the past.

JOOP!
EYEWEAR

NELSON Tel 03 548 3249
RICHMOND Tel 03 544 4319
MOTUEKA Tel 03 528 8724
www.matthews.co.nz

(MATTHEWS)
Eyewear. Eyecare.

Optometrists, Dispensing Opticians & Contact Lens Practitioners

NELSON TASMAN CIVIL DEFENCE RATES AS A TOP PERFORMER WITH GOVERNMENT

An assessment of the capability of the region's Civil Defence Emergency Management Group has shown it to be one of the best performing in New Zealand.

The first ever assessment was carried out in April 2010 and is part of a national review process which will look at every local Civil Defence Group throughout the country every three years.

The Ministry of Civil Defence and Emergency Management (MCDEM) carried out the review. The Ministry says the evaluation has revealed the Nelson Tasman Group to be very capable, that it has the commitment of stakeholders at all levels, and that it has undertaken comprehensive planning across the 4Rs. (Readiness, Response, Resilience, Recovery).

Alan Walker from the Ministry says "The report showed Nelson to be one of the best performing Civil Defence Groups in New Zealand evaluated so far."

The report notes positive working relationships and the strong regional focus of the civil defence management structure, which consists of the CEOs of the two councils and heads of the emergency services, District Health Board and the Ministry of Social Development.

The report also highlighted the engagement of a supportive governance structure for regional civil defence, which consists of the Mayors and Deputy Mayors of Tasman District and Nelson City. The Ministry says



the strength of the Group also lies in competent individuals in key roles, well established networks and a strong sense that members will be able to rely on each other for support if needed.

The report says there is a high level of confidence in the Group's ability to respond to an event of short duration, as well as the recognition that an event of longer duration is going to cause some degree of difficulty for its member organisations and communities. With this in mind community response plans have proven to be a successful mechanism to promote and enable community resilience.

However, the assessment says there are some areas that could benefit from further attention. The most frequently raised issues related to the sourcing and developing of a dedicated Group Emergency Operations Centre, as well as the need to ensure there is 'real' capability and capacity behind the plans and procedures that have been developed over recent years.

The report concludes the Nelson Tasman Group has a very strong foundation - in its organisational and governance structures, the commitment of agencies and individuals, and the comprehensive way in which it approaches Civil Defence Emergency Management.

Nelson Tasman Emergency Management Manager Roger Ball has welcomed the assessment.

"It has been a very valuable exercise for all concerned and gratifying to know we are on the right track in so many areas. This report is a credit to all those concerned and the challenge now is to improve on those areas the Ministry has identified, such as a dedicated Group Emergency Operations Centre."

PATROLLERS WANTED

The Richmond District Community Patrol is a voluntary organisation that has been operating for three years, assisting the police in making the town safer. Patrols take place on Friday and Saturday nights, and volunteers also monitor cameras at the police station. The patrols' primary focus is to be an extra set of ears and eyes for the police.

New patrollers are needed and if you are interested, please contact Community Constable Glenn Lloyd Jones at the Richmond Police Station on Ph. 03 543 9500. New members are given an induction and training, with rostered duty about every six to eight weeks.

Support & Respect through your loss

Email: support@wrfs.co.nz
 Web: www.wrfs.co.nz
 Corner Salisbury &
 Champion Roads, Richmond

544 4400

WAIMEA RICHMOND FUNERAL SERVICES

New Zealand
Independent
Funeral Homes
Member.

Alistair Ferguson (Dip F.S.)

You don't need to be alone when tackling your debts.

Let NZCU South's Money Management Service help you get on top of your debts, so you can look forward to a debt free future. You will receive ongoing "one on one" professional help. Become debt free and attain those financial goals with this valuable service.

Contact your local NZCU South Branch for more information

Nelson Shop 2A, 126 Trafalgar St, Ph: 548 9821
Richmond 250 Queen St, Ph: 544 2435
nelsoncu@nelsoncu.co.nz www.nzcusouth.co.nz

Savings, investments and deposits in Credit Union South are shares secured by a First Ranking registered Trust Deed. A current Investment Statement and Prospectus are available. Credit Union South has a guarantee under the New Zealand guarantee scheme.

Money Management



BIG CLEAN-UP COMING UP FOR TASMAN BAY BEACHES

A big community spring clean of Tasman Bay beaches in time for summer is planned this November and a call is going out to local groups to sign up to take part in it.

The plan is to get hundreds of people involved in the Big Beach Clean-Up on Saturday 20 November, clearing rubbish from a staggering 291km of coast between Marahau and Cable Bay. The coastal clean-up primarily covers public-accessed areas, taking in beaches and also some rocky shoreline such as Nelson City's Boulder Bank.

Organisers, the Department of Conservation (DOC), Tasman District Council, Nelson City Council and NELMAC Ltd, are asking Nelson City and Tasman Bay community groups and organisations to sign up now to take on a stretch of beach to clean. Groups can find out more and register on the DOC website www.doc.govt.nz (search for big beach clean up).

Adventure race champion and organiser Nathan Fa'avae is championing the Tasman Bay Big Beach Clean-Up and says the beach tidy-up will provide a healthier coastal environment for both people and wildlife.

"As locals we get a huge amount of pleasure out of relaxing and playing on our beautiful Tasman Bay beaches. They are also a hub for the thousands of holidaymakers who come to our region in summer seeking sun, sand and sea.

"The Big Beach Clean-Up enables us as a community to come together to make them cleaner, healthier, more attractive and enjoyable for ourselves and for our visitors.

"The rubbish found on beaches comes from littering on land and at sea. It is not only unsightly, it can cause harm.

"I encourage people to join up and join in to care for our beaches - not just this year but in future years as an annual spring clean of our beaches."

Rudy Tetteroo of DOC, which is leading the beach clean-up, said a wide range of groups could take part.

"Sporting, service and recreation clubs, environmental, social and community groups, businesses and workplace staff are just some of the groups we are encouraging to take part."

"There are 50 sections of coast to be cleaned, of varying lengths and ranked easy, medium and difficult in terms of the ease of access and the terrain. We are inviting groups to sign up to clean a section suited to the size of their group and the capability of their members."



RICHMOND COMMUNITY HEALTH GROUP MEETING

There is an increasing number of health and social service agencies establishing in the Waimea/Richmond area. The Richmond Community Health Group is inviting community groups/individuals to attend a meeting to gauge if there is sufficient interest to establish a network of groups who address the needs of the Richmond population.

This group (to be modelled on the successful community and whanau

network that currently operates in Nelson, Stoke and Motueka) would provide networking and support for those with an interest in the health and wellbeing of the community. The meeting will be held Wednesday 4 August 12.00 noon - 1.00 pm in the Council Chambers, Tasman District Council, Queen Street. RSVP by 26 July 2010. Contact Helen Rance, Ph 03 5446840 or Email hrance@clear.net.nz



Environmentally safe waste disposal specialists



Motueka (03) 528-7349
 Richmond (03) 543-8248
 Fax (03) 543-8247
 Email sales@sepcclean.co.nz
 PO Box 3389, Richmond
 Freephone **0800 725 326**

Septic tanks, sumps, grease traps and other liquid waste

OUR SPORTING PASSION!



CALENDAR



printhouse

STAYING SAFE ON OUR ROADS

Crash Hotspots

Aranui Road, SH60, Mapua

Who Gives Way?

Answer: Vehicle B gives way to Vehicle A

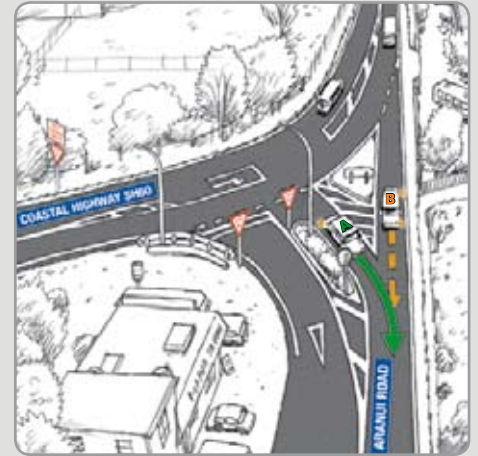
This means traffic coming from Ruby Bay who are on, or approaching the start of, Aranui Road travelling into Mapua give way to vehicle A

Why?

Vehicle B although physically going straight ahead, is turning off the main road (the lane markings such as: the centre line and broken white lines on the road's edge indicate this) and so is effectively making a left hand turn. The right hand rule applies:

"If you are turning left, give way to vehicles coming towards you that are turning right".

Vehicle A is turning and would have to Give Way to any traffic continuing towards Nelson on SH60, but has right of way over vehicle B.



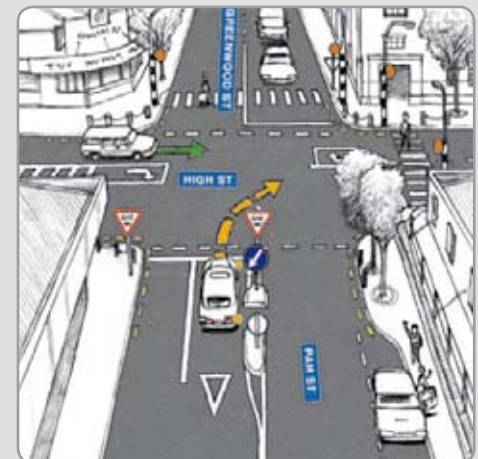
Pah Street / High Street, Motueka

What are the Problems?

- Turning traffic fails to give way to straight ahead traffic.
- Turning traffic misjudges gap when entering High Street.
- Drivers are not noticing other traffic has slowed to give way to pedestrians. This is causing rear-end crashes.
- Traffic density during peak times makes it difficult for turning traffic to enter High Street.

What are the Solutions?

- Look twice to see if the way is clear, be patient and judge the gap.
- Watch following distances, look and think ahead.
- If physically able, consider parking away from High Street and congested areas and walking the extra distance.
- At peak times be courteous and let people into the queue. Slow moving traffic travelling straight ahead on High Street can let turning traffic in more frequently if the way is clear in both directions. This will help avoid delays for turning traffic at intersections.

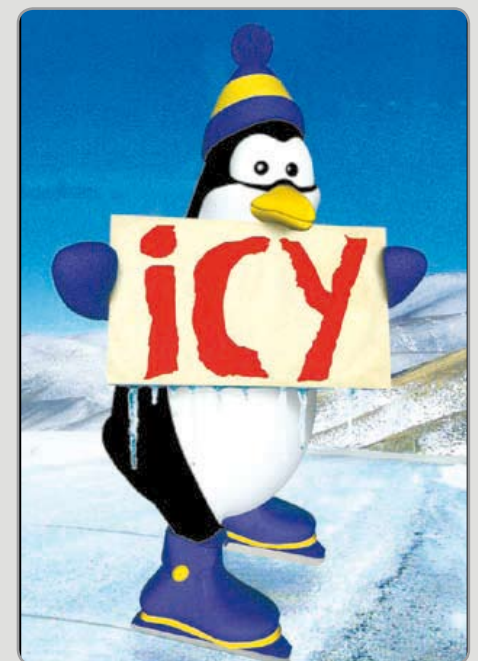


Driving Conditions

Winter Driving

Every year there are around 10 fatal and 125 injury crashes where bad weather is a contributing factor. However bad weather seldom causes crashes on its own. Generally crashes occur because people haven't adjusted their driving behaviour to the conditions. Wet and slippery roads are less forgiving when a driver makes a mistake. That is why extra care and attention is required for winter driving.

Winter driving doesn't have to be dangerous or intimidating. By preparing your vehicle and adjusting your driving for the conditions, you can go a long way towards ensuring your safety and that of others on the roads this winter.



Prepare your vehicle

A few simple steps can help you ensure your vehicle is prepared for whatever winter throws your way:

- Have your vehicle checked out. Many garages offer safety checks covering tyres, lights, brakes, cooling systems, fanbelts, batteries and alternators.
- Make sure that your heater, fans, wipers, defrosters and demisters are working.
- Always demist and de-ice all windows before you start driving so you have a clear view.
- Antifreeze is an essential winter ingredient for your car's engine.

It's a good idea to keep warm clothes, blankets and even a small supply of food in your car. All of these will help you stay warm if you become stranded. Consider carrying a cellphone for emergencies. Always carry chains if you expect to encounter snow.

Driving in the wet

Remember that stopping distances are nearly doubled on wet roads – slow down and keep a generous following distance between you and the car in front. The two-second rule should become at least the four-second rule.

Be extra vigilant: take corners slowly. Heed road signs warning of flooding and remember that you will need more time to stop and avoid hazards in wet conditions.

Driving in snow and ice

Whenever possible, avoid driving in heavy snow. If you do drive in snow, SLOW down.

Braking distances are greatly increased on snow and ice. Avoid braking suddenly. Give the brake pedal a few soft taps rather than one hard push, to avoid sending your vehicle into a skid. Remember to carry chains, and use them when necessary.

Driving up hill

Climbing and descending hills in snow requires special care. Climb hills in the highest possible gear – lower engine revs will minimise the chances of losing traction and spinning your wheels.

Driving down hill

Descend hills very slowly, putting your vehicle in a low gear (2nd is usually better than 1st) before beginning the descent. If you decide to change to a lower gear while going downhill, do it very gently. The compression effect of the engine as a lower gear is selected can cause the front wheels to slide.

If there are tracks in the snow in front of you, follow in them if it is safe to do so. If you are travelling in convoy, alternate vehicles with chains and those without. This will prevent the snowcovered surface from becoming glazed and icy.



STAFF PROFILE – SELWYN STEEDMAN

What is your main role?

Transport Network Engineer managing the Council's four roading maintenance contracts. I also manage the coastal structures such as wharfs, boat-ramps and rock wall protection work.

What are the common challenges you encounter?

In the summer it's dust from gravel roads and how best to minimise this. In winter, slips from above the road or below the road.

Are there any misconceptions getting in the way?

Ratepayers and the general public expect every problem to be fixed immediately, but Council simply doesn't have enough money to do it all.

What's the most curly question or situation you have encountered recently?

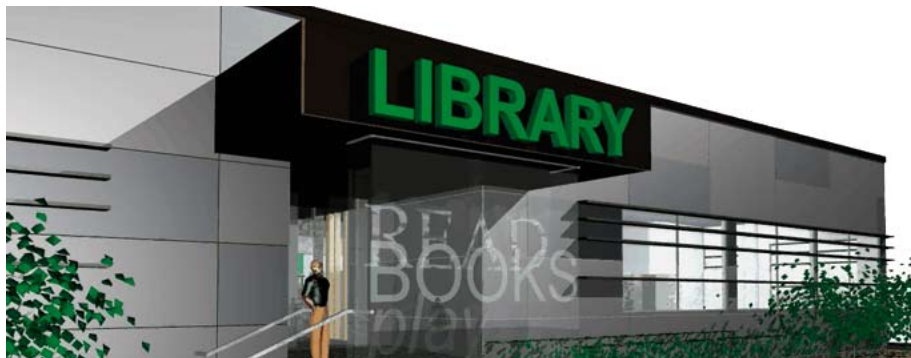
No question is silly or too curly – just work through all the options to see if a positive outcome can be achieved.

What's the most satisfying part of your job?

The diversity the job brings keeps me motivated, and working with such a diverse team of people in an area with such fantastic landscape is awesome.

WRITE CHOICES

NEWS FROM THE TASMAN DISTRICT LIBRARIES



Richmond Library opens

The waiting is over! Richmond Library was officially re-opened on Saturday 3 July 2010 with more than 1200 customers visiting in the first 4 hours. And business hasn't slowed down since.

Everyone has been very positive about the new library with lots of favourable comments about the light and airy space, the book displays and the range of new features and improvements. The Imaginarium has been particularly popular and the new downstairs meeting room has been filled every day with children and parents taking part in school holiday programmes.

Thank you again for your patience and tolerance throughout the long months of noise, dust and building chaos. It has certainly been worth the inconvenience to have a stunning modern library Tasman District can be proud of.

Richmond Library
same place, different space

What's on at your library

Takaka Memorial Library – Winter Series
Come on in to Takaka Library on Fridays at 1.00 pm and listen to our fascinating speakers & fabulous musicians.

Friday 23 July

"A Tourist Trip to Antarctica" with John Mason

Friday 30 July

"National Poetry Day" – Em Hofstede introduces poets from the Bay

Friday 6 August

"The Wonderful World of Cord Progressions"
Rum & Coke (violin/guitar duo) play The American Song Book

Friday 13 August

"Digressions on Food" with Fiona Feasey

Friday 20 August

"From the Stone Age Until Today – Man's Relationship with Bees" - with John Smith

Friday 27 August

"Stick with your Lifelong Dream – it can happen!" – with Robbie Robilliard

Meet the author at Motueka Library

Motueka Library is pleased to host Nelson author Anne Harvey on Tuesday 27 July 2010 at 7.00 pm. Anne will be talking about her latest book "Sons to men: a mother's guide". As a mother of four sons and with a background in life coaching and education, Anne knows first hand how challenging it is to hold your tongue and maintain your sense of humour around teenage boys. For more information phone Helen McCubbin at Motueka Library 03 528 1047.

Introduction to Family History course at Richmond Library

Ever wanted to do your family history research but don't know where to start? Ask about our free "Introduction to Family History" courses to be held at the Richmond Library starting soon.

Each course has two sessions:

Session 1 – 4 August 2010, 10.00 am to 12 noon – Getting Started

Session 2 – 18 August 2010 10.00 am to 12 noon - Using the Internet

These courses will be repeated on 11 and 25 August 2010. An evening course will be held at a later date.

Spaces are limited so book now
Ph 03 543 8500.

NEW in the Library

Blueeyedboy by Joanne Harris

Blueeyedboy is the brilliant new novel from Joanne Harris: a dark and intricately plotted tale of a poisonously dysfunctional family, a blind child prodigy, and a serial murderer who is not who he seems.



Winter's awakening by Shelley Shepard Gray

In the small Amish town of Sugarcreek, Ohio, Joshua knows what's expected of him: to work at the family store and to finally marry Gretta, whom he's courted for years. But when a new English family moves in next door - and their teenage daughter catches his eye - Joshua wonders if his future plans are too firmly set in stone.



Slow by Alyson Gofton

Celebrity cook Allyson Gofton gives us her own special take on slow-cooked food, sharing over 180 of her favourite recipes for the slow cooker or crockpot.



WANT TO REPRESENT YOUR COMMUNITY?

Nominations for Mayor, Councillor, community and hospital boards open on Friday 23 July 2010. If you are thinking of standing in the Local Government elections, you have until 12.00 noon on 20 August 2010 to get your nomination forms in.

There are, however, some basic requirements within the nomination process and rules around who can stand and for what role.

Candidates must be New Zealand citizens and enrolled to vote. They must have lived at their current address for at least one month, but do not need to live in the area they are standing to represent.

Candidates can stand for any of the following:

Tasman Mayor, Councillor, Motueka Community Board, Golden Bay Community Board, Nelson Marlborough District Health Board.

Nominations must be made on the appropriate nomination paper for each position. These are available from the Tasman Electoral Officer, Ph. 03 543 8554 or 03 543 8434 Email: sandra.hartley@tasman.govt.nz

Each nomination form must have the consent of the candidate and be nominated by two people whose names appear on the electoral role for the district or ward you wish to stand in.

Completed nomination documents must be received by the Electoral Officer by 12 noon on Friday 20 August 2010. Each nomination must be accompanied by a deposit of \$200 incl. GST, payable by eftpos,

INAUGURAL CHILDREN'S BOOK QUIZ

Motueka and Takaka Public Libraries held their inaugural book quiz on Wednesday 16 June 2010.

The aim was to inspire children's interest in books, celebrate children's literature, promote New Zealand authors and complement the other cultural and sporting activities in the District.

100 year five and six students from 10 local schools, along with teachers and parents, took part in the Motueka quiz. Meanwhile Takaka Library hosted 30 children from three local schools to compete in a four round book quiz.

Mapua Crocodiles won 1st prize and the Motueka Public Library Book Trophy. Equal 2nd place went to Riwaka Funky Bananas and Mapua Leopards. Takaka Library's 1st prize was won by Central Takaka School's Cobras with Motupipi School's Passion Hoppers in 2nd place and Takaka Primary's Blue team 3rd.

The generosity of many local businesses helped make this a successful event. Sponsors included New World Motueka, Motueka TakeNote and Takaka's Junction Hotel.



Mapua Crocodiles win 1st prize at Motueka Library's children's book quiz.

Local Elections 2010

YOUR VOTE YOUR COMMUNITY

cash or cheque.

The voting forms are sent out to registered voters with a candidate profile booklet, identifying the candidates for the relevant positions. When delivering completed nomination forms, candidates may submit a profile statement and photograph. The requirements for these are set out in a candidate handbook that is available with the nomination papers.

Nelson Marlborough District Health Board candidates must also submit a Conflict of Interest Statement with their nominations. Requirements for this statement are included in the candidate handbook for the DHB.

Distinctive, quality
homes



- Invest in high quality, easy living
- Enjoy the latest in home comforts and energy efficiency
- Experience the dedicated personal design and build service that guarantees you have a hassle-free build
- The security of a fixed price guarantee
- "You made what can be a daunting undertaking an enjoyable and exciting event in our lives" - P Hansen
- 10 year Guarantee by Government Licensed Building Practitioner who has been building in your community for 29 years



MIKE McLEAN
HOMES LTD

EXCEPTIONAL HOMES YOU'LL BE PROUD OF!

Ph. 03 528 8392 or visit www.mmhomes.co.nz

HAVE YOU REGISTERED YOUR DOG?

Dog owners are reminded that they have until 31 July 2010 to pay the standard fee for their dog's annual registration.

A penalty of 50% of the Urban or Rural fee will be added to the standard fee for all dogs that remain unregistered from 1 August 2010 onwards.

All unsigned forms will be returned as the registration information must be verified before your dog can be registered.

If you have not received a registration form, please contact Council immediately in order to avoid paying the penalty rate.

Please remember to sign your form, we cannot complete your dog's registration if the application is unsigned.

HITTING THE ROAD WITH ECOFEST – HOME AND GARDEN TOURS

If you're interested in eco-design principles, creating a veggie garden that's the envy of your friends or learning more about self sufficiency, then don't miss this year's Ecofest home and garden tours. Ecofest is a joint event by Tasman District Council and Nelson City Council and the home and garden tours are being held the weekend prior to the Ecofest Expo (August 14 & 15) with three different options to choose from.

The Saturday Eco-home tour, hosted by Nelson City Council Eco Building Design Advisor Richard Popenhagen, will focus on contemporary urban homes around Nelson that incorporate good passive solar design principles. On this tour you'll see properties that use good design to maximise sunshine and minimise heating costs, plus check out an innovative solar heating system that's new in New Zealand. The homes on this tour are all relatively modern, ranging from 16 years old to brand new. This tour will be ideal if you're thinking about building in the near future.

Also on Saturday is the 'Urban Edible Gardens' tour hosted by Nelson City Council Mayor Kerry Marshall, a very keen gardener. This tour will be informative and inspirational for both experienced gardeners

and newbies alike, and will cover a wide range of properties – large, small, steep and flat in and around Nelson, Stoke and Richmond. The properties range in size from around 300 square metres to over 1,500 square metres.

Sunday's Eco-home tour in and around the Moutere Hills area includes rural properties that will provide inspiration on self-sufficient living. Hosted by local architect Peter Olorenshaw, the Sunday tour focuses mainly on homes made from natural materials such as mudbricks, timber and straw bale. Plus, you'll visit a luxury eco-lodge situated on 150 acres of private forest that uses less than half of the energy of an average New Zealand household.

"This is a great opportunity to discuss your ideas with knowledgeable people and to see how eco principles can enhance your home and lifestyle," says organiser Jo Reilly. "Anyone who is thinking of building or renovating would benefit from attending one of the tours. It does pay to book early as they are always very popular."

All of the tours require some walking on steep slopes and Jo recommends people bring their own lunch and refreshments for the day, as lunch stops usually just offer light refreshments.

Tickets cost \$25 per head and are available from 21 July 2010 from Council offices in Nelson and Tasman District.

For further information or images please contact: Jo Reilly Ph 03 543 3663 or email ecofest@xtra.co.nz

Providing professional legal assistance in all commercial matters, trusts, wills and powers of attorney



Fiona McConnochie
Senior Solicitor

2 Cambridge Street
Richmond

Ph: 03 543 8301 Fax: 03 543 8302
Email: fiona@fvm.co.nz



FLETCHER VAUTIER MOORE
LAWYERS

Create your own beautiful garden with house wastewater

Purification is done with plants, microbes and sunlight rather than harmful chemicals, to produce a beautiful landscaped garden.



WASTEWATER GARDENS®



58 Gladstone Road, Richmond
Ph 03 543 8004
Email wastewater@allflow.co.nz



NEWSUPDATE

COUNCIL NOTICES

Water User Committee

Notice of Meeting – Moutere Water Users

Water Management Zone residents and water permit holders who are interested in the management and use of water in the Moutere zones are invited to a public meeting to be held:

Upper Moutere Community Centre, Wednesday 4 August 2010, 7.30 pm.

Chaired by Cr Brian Ensor.

The purpose of the meeting is to:

Elect a new water user committee. Update on the ongoing monitoring, management and planning in the catchment. Update on the pending National Water Metering Regulation.

This meeting will also be an opportunity to discuss any other local water issues.

The Council encourages and supports Water User Committees in contributing to water management in the District.

For further information about this meeting please contact Vicky Thorn
Ph 03 543 8567 or Joseph Thomas Ph 03 543 8494.

Zero Waste Grants open

Do you have a great idea that could reduce waste?

Tasman District Council's Zero Waste Grants may be able to help you put it into practice.

Zero Waste Grants are available for initiatives that promote waste minimisation and help to educate communities about the importance of reducing waste.

Funding is available to schools, early childhood education centres, community groups and businesses. This is a contestable fund.

Contact Mary Curnow at Waste Education Services for further information about the Zero Waste Grant fund or for an application form. The closing date for this round of applications is **Friday 6 August 2010**.

Phone 03 545 9176 ext 3, or Email marycurnow@nec.org.nz

Child Safety Information Session

Plunket & Tasman District Council wish to invite everyone in the Upper Moutere area to a Child Safety Information Session on **Wednesday 11 August 2010 from 3.00 pm – 4.30 pm at the Upper Moutere Community Centre**.

Two key issues will be addressed:

Car Seat Checking Clinic

Driveway Runover Kit

For more information contact Jo Robinson, Ph 03 543 2582 or 021 264 7559

24 Hour Emergency – Phone your local office

Richmond 03 543 8400

Murchison 03 523 1013

Motueka 03 528 2022

Takaka 03 525 0020

info@tasman.govt.nz www.tasman.govt.nz

Tasman Newsline The Mag is produced by Dry Crust Communications for Tasman District Council and is printed by Printhouse. Newsline is printed using vegetable oil-based inks, on paper produced from elemental chlorine free pulp using only farmed Eucalyptus trees in an ISO accredited mill.

For advertising and editorial enquiries please contact Dry Crust Ph. 03 544 4975 or fax 03 544 4951.

COMMUNITY NOTICES

Business Waste Survey

Tasman District and Nelson City Councils are asking all businesses in the region to complete a new short survey. The survey, prepared by Waste Education Services, asks how businesses in the region dispose of their waste; what is reused or recycled and where improvements in waste services could be made.

The survey is available online at <http://tinyurl.com/wastesurvey> and businesses are asked to complete it by **31 July 2010**.

Complete the survey and be in with a chance to win a \$200 voucher from Office Max!

For further information contact Mary Curnow at Waste Education Services on 03 545 9176 ext 3 or email marycurnow@nec.org.nz

Walking Our Streets – Let's Make It OK!

The Te Rito Family Violence Prevention Network is calling the community into action with a Public Panel and a Community Conference on the topic of safety on our streets. Two amazing events presented under the banner: Walking our Streets – Let's Make It OK! Take this opportunity to come along, ask those hard questions and get involved.



The Public Panel:

Nelson College, Thursday 29 July 2010, 6.30 pm – 8.30 pm

The Community Conference:

Saxton Field, Friday 30 July 2010, 8.45 am – 3.30 pm

For further information please contact Gayle Helm.

Email terito07@xtra.co.nz or Ph 03 548 3798.

Ecofest – Expo 2010 – 21-22 August 2010

Have you applied for your stand?

Call Jo on Ph 03 543 3663 or

Email Ecofest@xtra.co.nz

Why not follow Ecofest on Facebook - search "Ecofest Nelson Tasman"



COUNCIL MEETINGS

Agendas and Minutes for Council Meetings can be viewed on Council's website at www.tasman.govt.nz

Environment and Planning Consents Subcommittee (Nelson Regional Sewerage Business Unit)

Tasman Council Chambers, 189 Queen Street, Richmond, Monday, 26 July 2010, 10.30 am. *No public forum*. This is a joint Nelson City Council/Tasman District Council hearing. Hearing will continue on Tuesday 27 July 2010 and Wednesday 28 July 2010, commencing at 9.30 am both days.

Regional Transport Committee

Tasman Council Chambers, 189 Queen Street, Richmond, Friday, 30 July 2010, 10.00 am. *No public forum*

Combined Shareholders Group

Nelson City Council Chambers, Trafalgar Street, Nelson, Friday, 30 July 2010, 1.30 pm. *No public forum*

WHERE DOES YOUR RECYCLING GO?



Ever wondered what really happens to your recycling once it disappears from your recycling bin?

Peter Grennell, Southern Business Manager for Smart Environmental, is the man who can tell us what happens to the recycling collected in the Tasman District.

Smart Environmental has held the contract for kerbside recycling collection with Tasman District Council for the past six years, employs 30 – 35 staff on the contract and collects between 2,000 – 3,000 tonnes of recyclables just off the kerbside each year. Peter explains the recycling process from 'whoa to go'.

"Your kerbside recycling is collected by two staff on an LEV (low entry vehicle). There's a driver and a runner. The vehicle has dual steering and is designed to be driven standing up on the left hand side.

"They'll pick up your bin and sort the waste into different compartments in the back of the truck – paper and card; glass; and the plastic, tins and aluminium co-mingled."

At the transfer station, the paper and card is baled into large bales ready for shipping, the glass is stockpiled for beneficial reuse and on a conveyor line, a magnetic belt picks up the tin and aluminium, while the plastics are hand-sorted by staff into different categories.

From there, tin and aluminium is sent to be melted down. Tin cans can be re-made into steel while the aluminium is re-made into aluminium products.

The paper and cardboard bales are sent to mills in Indonesia, China and Vietnam. The bales will end up in shipments of about 20-30,000 tonnes and are re-processed into cardboard packaging used to make items such as egg cartons.

Plastic milk bottles are baled and sent to China where they are re-processed into raw HDPE (High Density Polyethylene) to make products such as water pipes. The PET plastic such as soft drink bottles get sent to China or Vietnam for reprocessing into fibre used for things like stuffing for sleeping bags, pillows or polar fleece. Mixed plastics are also shipped overseas where they are further sorted and may be used to make a variety of products.

Glass can be used for crushing and mixing with aggregate for roading, backfilling.

So here's a reminder of what can be recycled from your weekly waste. Acceptable materials and their preparation are as follows:

Plastic Containers (1-7) - Plastics with 1-7 stamped in a small triangle on the base of the container can be recycled, excluding expanded polystyrene. Wash and, squash (place tops back on bottles). No foil or plastic labels. paper labels are acceptable. No hazardous material containers, eg. pesticides, oil or toxic chemicals. Place in the recycling bin.

Cans/Tins - Wash tins and squash under your shoe. Aluminium cans should also be squashed. No need to remove labels. Empty aerosol cans and clean aluminium foil products are acceptable. Place in the recycling bin.

Newspaper, Cardboard and Paper Card, Magazines and Other Paper - Newspaper plus any inserts, even glossy ones. Flatten, fold and tie in bundles no larger than the recycling bin and not loose in the bin. Small pieces may be placed in plastic bags. No tetrapaks or plasticised/foil lined containers please. Place beside bin at the kerbside.

Glass - Whole bottles and jars only. Glass must be washed clean with no lids or corks. No broken glass, light bulbs, Pyrex, windscreen or window glass. No need to colour separate or remove labels. Place in recycling bin.

If required, smaller recycling bins are available, as well as additional recycling bins, from Smart Environmental, Ph 03 543 9000.

Safe, clean, electronic pest removal

Plug-in Pest Free is the one-step, cost-effective way to rid your home or business of rats, mice, and cockroaches.

Plug-in Pest Free is the world's leading electronic pest management system, tested and proven over the last 15 years to drive these pests out of your property. It works by sending short pulses of electromotive force through electrical wiring of your building, driving pests from their hiding places and out of your building - permanently!

- Safe for people, pets, and PCs.
- 60-day money-back guarantee
- 2-year parts & labour warranty
- 10+ year lifespan
- Non-toxic
- Environmentally Friendly
- Not Ultrasonic

PLUG-IN

Pest Free®

Special Domestic Unit Offer. Save \$30 off the full price. Call us on 0800 001 333 or go to www.pluginpestfree.co.nz

\$159.95

Usually \$189.95

