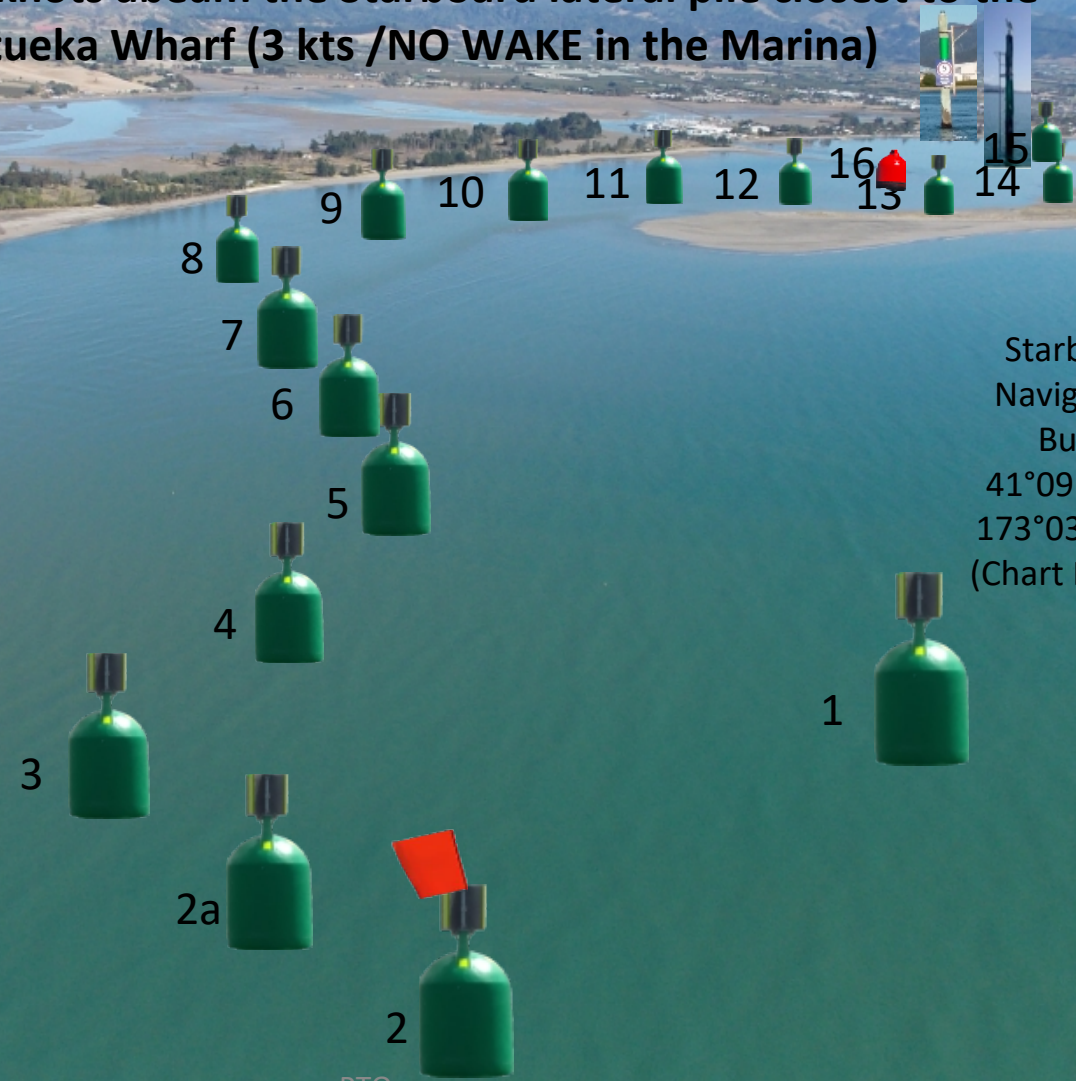


1. High tide

V46. Local knowledge Motueka channel @ high tide.
Keep channel markers (except the red Port buoy (#16)) to Starboard
(the right side of your boat) when inbound,
buoys 0-16, (valid 18th Aug 2023), inbound vessel max speed 15 Knots
(kts) until 5 knots abeam the Starboard lateral pile closest to the
Motueka Wharf (3 kts /NO WAKE in the Marina)

~↗
North



Starboard
Navigation
Buoy
41°09.028 S
173°03.142 E
(Chart NZ614)

PTO

2. Low tide

Starboard
Navigation
Buoy
41°09.028 S
173°03.142 E
(Chart 614)



Buoy 1, (marks the sand bar at the entrance, min depth may be ~0.5 meters @ low tide (~3-4 meters max depth at high tide))

Life Jackets must be worn when crossing the bar!!

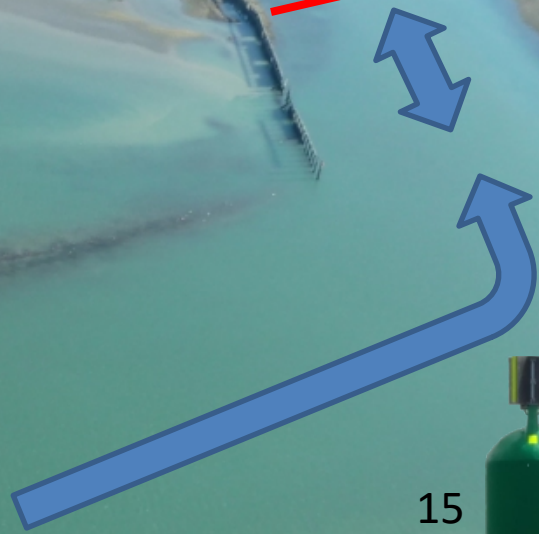
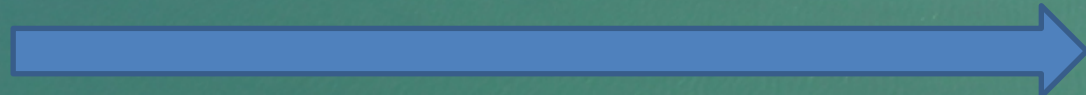
3. Inner channel @ low tide





5 kts

16  (sand/ cobble bank!)

15 Kts (Knots) boat speed



15 

13 

14 

Inner Starboard
Pile marks 5 knot
zone!

PTO

3

4. Motueka Marina, 5 knot and 3 knot speed areas.

No Wake!

(Caution! – 5 knot buoy with Red “Port” top marker at the marina entrance marks a sandbar, (keep close to the 3 orange buoys).



3 knots only
No Wake!

5 knots only !

Marina traffic
turn between
the poles!

Caution Sandbar