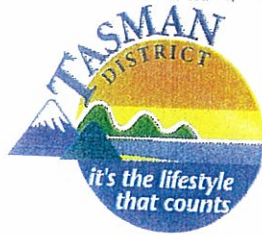


Motueka Community Board

C/- Tasman District Council
 Motueka Service Centre
 7 Hickmott Place
 P.O. Box 123
 Motueka 7161
 Phone 03 528 2022



Discretionary Fund Application Form

Name of Applicant:	MOTUEKA MUSEUM
Address of Applicant:	140 HIGH STREET MOTUEKA
Telephone Number:	03 5287 660 savepast@ihug.co.nz
History of community group or individual represented:	Established and incorporated August 1984 and approved as a Charitable Trust October 1984 - CC 26772. Opened to the public in 1987.
Amount applied for: (under \$500)	\$500 inclusive gst.
Details of project:	To complete our new database with the multi-media programme (see attached)
Who/What will benefit in Motueka community from the project:	It will enable photos, videos, audio related to the artefacts to be attached to their accession documents and to be more easily accessible to researchers, the public & the staff of the Museum.
Description of voluntary time and money contributions/donations:	Lioness club of Motueka funded the original purchase of the basic database for \$1200 incl. We have also had training sessions at Motueka with the operator of this same system from Blenheim, who gave a day freely, only being paid for her petrol.
Outline other attempts to raise funding:	We are also approaching Rotary Motueka and/or the Lioness Club again.
Intended use of funds: (Quotes to be provided)	To purchase the Multi-Media Programme add-on for the Past Perfect Museums Database.

Signed: 
 (Criteria over page)

Date: 23rd May 2011

Board Secretary/Treasurer

MOTUEKA DISTRICT
 MUSEUM



MOTUEKA DISTRICT MUSEUM TRUST BOARD

Costing for Multi-Media Add-on for PastPerfect Database.

Multi-Media Imaging software	US\$370
Freight	US \$75
Total	<u>US\$445</u>
New Zealand conversion	\$571
Flyway United Parcel to Auckland	\$216
• Customs Import Trans. Fee	
• Brokerage Dispersement	
• Customs EDI user charges	
• Customs security fee	
• gst	
Insurance	\$12
Total cost New Zealand	<u>\$799</u>

MULTIMEDIA / IMAGING

PastPerfect Software, Inc.

Home Products Support Purchase Resources Services Online Store Software Update Downloads Contact Us

Product Information



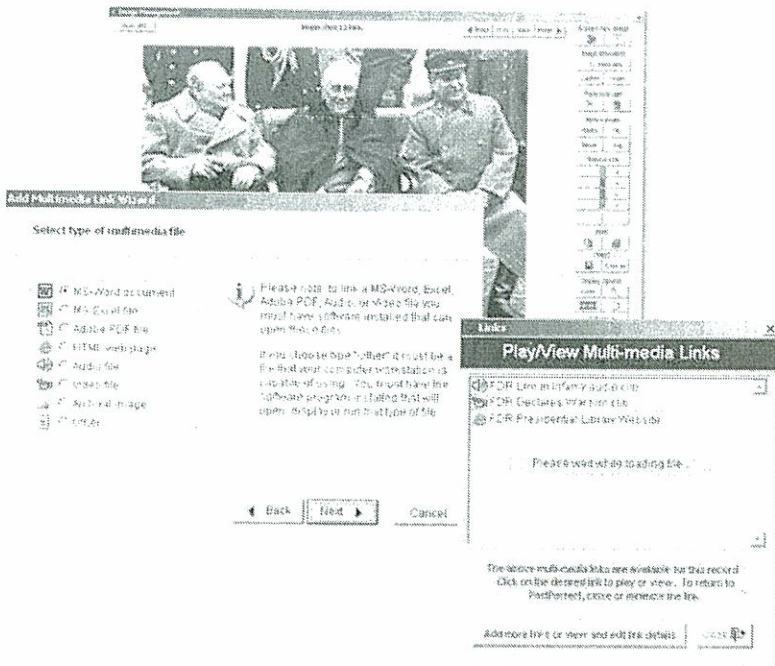
Item
MultiMedia

Standard Price	AASLH Price
US \$ 370	\$ 296

MultiMedia & Digital Imaging - PastPerfect's MultiMedia module includes both digital imaging and multimedia capabilities that allow you to attach and display images, audio, video, MS-Word documents, Excel spreadsheets, PDF's, and URL web links to each catalog record.

Product Description

Digital images are an asset to managing any collection. The ability to link valuable information in any file format makes your documentation even richer. Our easy-to-use MultiMedia Wizard helps you attach and use multimedia links. For example, you can attach and display a video clip of a mechanical toy in motion or click and play an audio file of an oral history recording. In addition, link MS-Word documents, Excel spreadsheets, and relevant websites to augment your catalog records. Our easy-to-use Wizard makes it possible.



Digital Images bring your PastPerfect catalog records to life - Digital Imaging is included with the MultiMedia Upgrade. Digital Imaging gives you the power to attach and display one or more images for each record, import from existing image files, and acquire images directly from a scanner or digital camera. With PastPerfect's Digital Imaging it is easy to scan multi-page documents and view the document as if you are turning the pages. Scanning your documents and photos into PastPerfect will diminish the need for handling, thereby preserving your community's historic resources. Add your own custom watermark to insure the security of your collections.

Image storage

Images can be stored on your hard disk or network file server. Using compressed formats such as JPEG you can store as many as 200,000 images on a twenty gigabyte hard drive. For in-depth information about MultiMedia, you can download its chapter from our User's Guides. It is Chapter 19 in the [Version 4.0 User's Guide](#), and Chapter 26 in the [Version 5 User's Guide](#).

Copyright 2010: PastPerfect Software, Inc.