

I hereby give notice that an ordinary meeting of the Golden Bay Community Board will be held on:

Date: Tuesday 13 November 2018
Time: 4.00pm
Meeting Room: Takaka Office, 78 Commercial Street,
Venue: Takaka

Golden Bay Community Board Correspondence

ITEM	PAGE
Correspondence October 2018	
1. Local Board Presentation	3
2. Golden Bay Community Gardens Business Plan	17
3. Grandstand Restoration Proposal	37
4. Conservation Minister - Whitebaiting	39
5. Wainui Bay Spat Farmers - Flow Chart for Complaints	41
6. Wainui Bay Spat Farmers Annual Consent Holder Meeting	43
7. Heritage Golden Bay - Plaques	45
8. Collingwood Area School - Invoice	47
9. Golden Bay High School - Invoice	49
10. Village Green Society - Special Fund	51
11. Grandstand Restoration Proposal Response	53
12. Project De-Vine Presentation	55



Local boards and community boards – what's the difference?

Gavin Beattie
Local Government Commission
October 2018

This presentation

- LGC responsibilities
- Common features of local/community boards
- Key differences
- “Non-regulatory” activities
- *Allocated* responsibilities
- *Delegated* responsibilities
- Funding
- Reorganisation applications



Local Government
Commission
Mana Kāwanatanga ā Rohe

LGC responsibilities

- Council representation proposals – LGC determines appeals, objections and non-compliance issues
- Local government reorganisation – LGC receives applications and decides whether or not to assess, proceed to a draft then a final proposal
- Provide information about local government
- Promote good practice



Local Government
Commission
Mana Kāwanatanga ā Rohe

Common features

- LB/CB not a local authority, nor a committee of the council
 - - doesn't have separate legal standing
 - can't employ staff, enter into contracts
- LBs: 5-12 members; CBs 4-12 members (may include appointed council members)
- Mandated to represent their area
- Required to communicate with community organisations and special interest groups in their area
- Must undertake any delegated responsibilities
- May consider and report to the council on any matter of interest or concern to the board
- Candidates may stand for the council and board, but if elected to both required to vacate the board position



Local Government
Commission
Mana Kāwanatanga ā Rohe

Key differences

Local boards

- **Shared** decision-making
- Responsible, democratically accountable for decisions
- Decisions on “non-regulatory” activities **allocated** to local boards
- Identify and develop bylaws for area, propose to council
- Must adopt a 3-yearly plan
- Must have an annual agreement with the council (services and budget) and

Community boards

- Primarily an advocacy, reporting body
- Decisions limited to matters **delegated** to board (delegations at discretion of the council, can be withdrawn at anytime)
- May prepare an annual submission to council for expenditure in community



Local Government
Commission
Mana Kāwanatanga ā Rohe

“Non-regulatory” activities

- Activities *apart from* the likes of: bylaws, building controls, consents, licensing (food premises, alcohol, animals) etc.
- In Auckland, non-regulatory activities include:
 - local planning & place-shaping
 - street environments/town centres
 - business area planning
 - arts/cultural facilities & initiatives
 - events
 - community development & facilities
 - libraries
 - recreation/sports facilities & initiatives
 - parks
 - environmental management & initiatives



Local Government
Commission
Mana Kāwanatanga ā Rohe

Allocated responsibilities

- Responsibilities allocated between the governing body and local boards according to legislated principles i.e. not solely at the discretion of the governing body
- Non-regulatory responsibilities should be allocated to local boards *unless* the following apply:
 - impact of decision extends beyond local board area
 - effective decision-making requires alignment or integration with other decisions
 - benefits of a consistent/co-ordinated approach outweigh benefits of reflecting local needs/preferences



Local Government
Commission
Mana Kāwanatanga ā Rohe

Allocated responsibilities cont'd

- Initial allocation of responsibilities between the governing body and local boards is made by LGC as part of final reorganisation scheme
- A dispute about any subsequent allocation decisions made by the governing body (or bylaw proposals), may be referred by a local board to LGC for resolution
- LGC to determine the dispute having regard to:
 - the requirements of the Act
 - the current & future well-being of the communities of the district, interests & preferences of communities in local board area



Local Government
Commission
Mana Kāwanatanga ā Rohe

Delegated responsibilities

- Additional tasks to board's allocated responsibilities
- Made at the discretion of the council/can be withdrawn
- May include regulatory activities
- In Auckland, delegated responsibilities include:
 - input into resource consent applications
 - amendments to dog control policy relating to local areas
 - objections to liquor licensing applications
 - making, amending, revoking alcohol bans
 - certain powers relating to local reserves



Local Government
Commission
Mana Kāwanatanga ā Rohe

Funding

- Council must adopt a ‘local boards funding policy’ (as part of its LTP) “to provide predictability and certainty about levels of funding for local boards”
- Policy must set:
 - the basis on which funds to meet the cost of all local activities is to be determined
 - formula by which funds are allocated to each local board
 - formula by which funds for meeting administrative support costs are allocated to each local board
- Policy must also identify any funding that may be available to local boards for local activities, other than that dedicated for particular purposes



Local Government
Commission
Mana Kāwanatanga ā Rohe

Funding *cont'd*

- The formula by which funds are allocated to each board must be guided by factors such as:
 - level of dependence on local govt. services & facilities
 - costs of maintaining identified levels of service
 - revenue derived from the area
 - factors affecting nature & level of service for the area e.g. geography
- The formula by which administrative support costs are allocated must have regard to:
 - number of board members
 - size of area
 - other funding allocated



Local Government
Commission
Mana Kāwanatanga ā Rohe

Funding *cont'd*

- 'Local board plan' includes:
 - default levels of service for local activities
 - variations & estimates of the additional cost/savings
 - indicative budget
- 'Annual local board agreement' (agreed between governing body & board) based on board plan, covering:
 - activities to be provided in the area
 - statement on how expenses in excess of funding allocation are to be met e.g. targeted rate
 - delegations to the board
 - implementation or enforcement of bylaws as a result of a proposal by the board
 - cannot be inconsistent with council plans & policies




Local Government
Commission
Mana Kāwanatanga ā Rohe

Reorganisation applications

- Establishment of local board(s) only by way of a reorganisation application (Schedule 3, Local Govt. Act)
- Include “information that demonstrates the application has community support” in the affected area
- “Affected area” for local board reorganisations is the whole area of the unitary authority
- Draft/final proposal promotes ‘good local government’:
 - promotes purpose of local govt. - enables democratic local decision-making, meets needs for good quality services
 - facilitates improved economic performance - savings & efficiencies, productivity improvements, simplified planning
- Potentially long process including: call for alternatives, draft proposal, submissions, final proposal, reorganisation



Local Government
Commission
Mana Kāwanatanga ā Rohe



The Golden Bay Community Gardens
& Sustainable Living Centre
Business Plan

©Golden Bay Community Gardens & Sustainable Living Centre

The information in this business plan is protected by copyright and may not be reproduced, copied, or shared in whole or part with any other party without the express consent of the Trustees of Te Wharerangi Trust



Business Summary

Name: The Golden Bay Community Gardens & Sustainable Living Centre (GBSLC), a project of Te Wharerangi Trust (TWT)

Structure: Registered Charitable Trust

Core Area of Activity: to promote sustainable living and organic principles through education and practice while providing space for community to create and share.

Strategic Aims

Sustainability: Te Wharerangi Trust is an organisation providing opportunities to experience sustainable practices and education in Mohua Golden Bay.

Partnerships: Te Wharerangi Trust engages and consults with all stakeholders and relevant community groups to uphold our mission statement.

Accountability: Te Wharerangi Trust has a framework of systems and compliance to meet the needs of all stakeholders.

The development of our Sustainable Living Course (SLC) forms the backbone of our strategic plan to become an environmental education provider and reach financial self-sustainability for the Te Wharerangi Trust while directly supporting the fulfillment of our strategic aims.

Business Goal: The GBSLC becomes a leader in education and practice for sustainable living.

Market Potential: People all over the world, in New Zealand and in our local region, Nelson/Tasman, are earnestly seeking knowledge & tools to create and engage in sustainable ways of life and living, community resilience and thriving. Our course is unique and effective. Our market share potential is significant.

Market: We have identified ages 18 -35 as our main target market due to current research showing this Millennial generation seeking eco/sustainable tourism, knowledge and training. Our goal is to prioritize serving Golden Bay, then Nelson/Tasman, New Zealand, Australia, then US, Europe, and other countries. Sustainability starts locally and spreads from there as we build greater local resilience with global networks.

Commercial Projection Summary:

The financial goal is for the course to become financially sustainable and cover costs of running the Community Gardens & Sustainable Living Centre.



Year One: Hold the course twice: gross earnings of \$68,000 net loss of \$21,000
 Year Two: Hold the course twice: gross earnings of \$92,000, net loss of \$6,000
 Year Three: Hold the course twice: gross earnings \$135,000, net profit of \$20,000

Projection does not include income from sponsorships, allotment fees, events, stall produce sales, donations.

Current Operations

Over these last 30 years, TWT has built up a strong portfolio of programmes and activities as outlined below.

- **Over 40 allotments** are held by members of the community who are able to use our collective tools and facilities & learn organic growing
- **Community Group Use** The gardens and facilities are used by many different groups and individuals including a homeschool group, 2 Kindergarten classes each week, Birth Wisdom group, people hosting meetings and activities such as meditation groups, yoga classes, qi gong, and children's birthday parties.
- **EVE Cafe** serves community lunches each week on Thursday and Friday for which we donate free lunches to those in need through the Community Workers.
- **Sustainable Golden Bay Events** held annually for the last two years, over two days in February promoting discussion by locals on sustainable practices. This year several initiatives have got underway from our next steps workshop including the Farming 2030 group, and Golden Bay Disaster Resilience Vision Group. Attendance rose from 86 in 2017 to 200 in 2018.

Facilities & Site Activities

- Commercial kitchen available to locals making organic foodstuffs
- Outdoor covered Cobb Pizza oven and rocket stove facility for community use
- Green space for social gatherings like birthday parties and festivals
- Makers Space (covered shed) for creative activities and gatherings
- Propagation space for small business growing organic seedlings for sale
- Shade house out back currently used for two months (October – November) by 'Hanging Baskets' team who get TDC funding to fill the main street of Takaka with flowers. The rest year it is available for nursery production
- Hothouse rented for small scale production by allotment holder(s)

Education For Sustainable Living

- TDC funded composting workshops
- Kindergarten nature exploration on Tuesdays and Thursdays in nut and woodlot areas
- Afterschool nature programme
- Living Skills programme funded by Corrections for offenders



- Organic gardening/health workshops eg produce fermentation, fruit tree pruning and seed saving
- Creative arts & craft workshops seasonally eg mosaics, flax weaving
- Youth Horticulture 8 week course run through Work Centre

Connected Culture

- Harvest Festival in March/April celebrating local organic food, entertainment and annual fundraiser
- WWOOFers/Volunteers assist with gardening and maintenance in exchange for stay and/or produce
- Corrections offenders doing community service to help maintain Gardens site. (Life Skills Course)
- Community stall offers local organic seasonal produce and vegetable and flower seedlings

Product Description

The Golden Bay Sustainable Living Course

The course will cover seven curriculum areas and include an individual project of the student's choice based on what is on offer in the Golden Bay community.

Curriculum areas are described below but **do not** include all content:

Personal well being:

- self care
- diet & nutrition
- positive attitudes
- non-toxic living
- mindfulness
- self-reflection

Permaculture design:

- the principles of permaculture design and how to implement them,
- the economics of looking after the house/place/Earth
- climate & how to work in different microclimates or how to affect them
- relevant principles of geology & topography
- how to design a property taking into consideration the needs of the clients & care of the Earth where to site different major elements ex. house, sheds, driveway.



Organic food growing:

- the difference between conventional and organic growing,
- soil preparation methods eg. forking, mech, tilling, no dig, double dig
- the role of weeds and how to make friends with weeds
- how to sow and propagate seedlings
- the role of soil in growing plants & how to feed soil
- how to make quality compost/vermi-caste
- organic weed & pest control
- making and using organic fertilizers
- seed saving, harvesting and eating

Food preparation:

- the difference between raw food & cooked food for the body & health
- different eating styles with meat, vegetarianism, veganism, & their benefits and issues
- skills in harvesting, prepping & cooking simple meals
- the role of herbs in cooking and their benefits
- learn how to measure and identify nutrient dense food.

Alternative building & lifestyle:

- how does building design fit into our environment
- the value of practical and simple buildings
- how to evaluate and find local materials for building
- the use of sound building materials that are local, non-toxic & ecological
- the use of alternative power systems: solar, wind, water, various styles of building - tiny homes, eco home
- to be aware of building regulations and the thinking required work in or around them
- how to deal with and build waste water and sewage systems

Resilient community & cultural connections:

- how to live simply by asking what do we really need?
- how resilient models work around the world
- how do systems of sharing work eg maker spaces, carpooling
- how Golden Bay is a resilient community and to what extent are we resilient in the areas of food, people, housing
- the importance of knowing who is around you
- respect, listening, and awareness of the well-being of others



- the importance of interconnectedness.

Employment & business:

- role of alternative money systems
- Worldwide Equivalent Value Exchange (EVE), HANDS (How About A Non- Dollar System), a local Golden Bay LETS currency, time bank, sharing, barter
- how to make your passion your work
- how to take an idea and make it a business
- how to budget
- how sustainable businesses in Golden Bay operate
- what's involved in self employment

Each curriculum subject will be offered in a combination of theory, practical, and hands-on field trips, taught by tutors from the Tasman region. The students, together with their tutor, will then visit various community organizations and businesses to learn the skills directly. Community organisations and businesses will share their knowledge and receive "hands-on" energy input from the students in exchange.



Expected Results

This course enables upskilling to address the gap between tools that are now available to us and the current limited use of these tools to build more sustainable, resilient communities.

"What greater tragedy if we had the capacity to make our world better, but that we didn't, only because we didn't know how to use what was at our fingertips." W.A Jones

Upon completion of the SLC, graduates will be equipped technically and motivationally to apply their new found skills in the following areas:

- their communities
- their own individual capacity
- their professional goals
- their higher education goals

They will apply these skills to projects across many sectors such as:

- addressing environmental issues and enabling community-sustainability projects
- new economics applied to sustainability projects
- development of new social enterprises
- support of existing sustainable businesses
- urban & rural design and built environments
- affordable housing

Benefits

In building on our existing strengths, this project will contribute in many ways and will benefit our local and regional communities:

- Local Golden Bay and Nelson/Tasman students will take their new knowledge and projects including potentially new sustainable businesses back into their communities.
- The national/international students who will attend this course will spend their money in our communities, in local shops and hospitality establishments. They will pay board to their host families. Their tuition will pay for local tutors and course coordinator wages, creating employment opportunities for community members. By year three there is a potential off-season income of over \$200,000 to Golden Bay. In years one and two this will be under \$100,000.
- Educational outcomes from students' personal projects will be presented to the wider community to inform, educate and inspire similar projects and to show what is possible.



- Local community organizations, businesses and individuals will benefit from the help that is offered by the students in exchange for their knowledge sharing. Organizations that can benefit are, for example: local schools, Golden Bay Community Health (hospital) Organic Kitchen Garden, Stream Care, Project Janszoon, Mohua Social Services (food bank), Te Whare Mahana, RSA, Project De-vine etc.
- The course strengthens the “branding” of our region as “the” sustainable region in the country and will bring in “Sustainable Living” tourism.
- Young people will gain knowledge and skills they can apply to a profession or higher education track.

Business Rationale

The MarketPlace:

- The global education market is estimated to be worth \$4.4 trillion. (London-based investment bank IBIS Capital, 2013).
- The continuing education market or ‘Smart Education & Learning Market’ is currently estimated to be worth US\$150 Billion and is projected to quadruple in growth to \$446.85 billion by 2020. “Smart Education and Learning Market by Hardware (IWB & SBL), Software (LMS/LCMS, ERP, Test & Assessment, Mobile Education Apps), - Global Forecast to 2020”

The Trends

- **Lifelong learning** is a global trend due to the necessity for retraining and upskilling at a time in history when people will have 5+ careers in one lifetime.
- **Massive social & environmental challenges** facing humanity in the 21st Century.
- **Community based responses:** Between the ideologies of the free market and the desire for self-empowered communities, the catchphrases of “Act Local” and “It’s up to us” are becoming the foundations of realistic strategic thinking for community leaders everywhere.

Market Comparisons

To the best of our knowledge, ours will be the only substantial educational offering with this breadth and depth of curriculum.

We are aware of a Sustainable Living Programme run through New Zealand councils nationwide. In a few parts of New Zealand, the programme offers evening classes led by a paid tutor such as a South Canterbury-based gardening class but in most areas a



'Sustainable Living' or 'Future Living Skills' self-help learning group is the only option available. Information offered in the guides offered by these services could perhaps be complementary to our course.

Other more similar courses in New Zealand are the 2-3 week Permaculture Design Courses (PDC) offered by various organisations throughout NZ including those offered by Earthcare Education Aotearoa, founded by one of our tutors, Robina McCurdy. The difference is our course is more in depth with greater emphasis on practical experience and field trips to local area examples. PDC graduates could benefit from our course to deepen their knowledge and gain relevant, local experience.

Worldwide: there are several programmes. The best example is the Sustainability Centre based in the UK. www.sustainability-centre.org. It offers a wide range of workshops and services to schools and people of all ages. Schumacher College UK offers a six month residency programme offering elements of permaculture design and organic growing. They also offer shorter courses of several days.

Neither has anything similar to ours in breadth of information, course length, & pricing.

Cost Comparison:

We identified an "Eco-Refurbishment Course" in Wales for 5 days for 600 GBP. We also looked for Permaculture Design Courses and they varied from 19 days for \$2350 to six month courses that met one weekend a month and were \$1600 US + accommodation.

We found an online course in Australia that was over \$2000.

We believe our proposed course price of \$2750 NZ including lunch and tea, excl accommodation for a ten week full time course is far more affordable and beyond that is good value for money.

Why The Need for Our Course

Local communities across the world have a myriad of all compelling social, economic and, increasingly, environmental challenges to face. At the same time there has never been a better range of great social innovations and technologies available to make things better and people are waking up to the need for sustainable solutions. The Golden Bay Sustainable Living Course answers the need for upskilling in how best to enact sustainable solutions at the local level.



Local Historical Evidence: The GBSLC as The Community Organic Gardens has been an integral part of Golden Bay for more than thirty years, meeting the needs of people committed to organic gardening and food production, a closer connection with nature, and a desire to connect with others and learn more. Growing community involvement in all our events and activities makes it clear that the GBSLC plays a central role in the community, sharing knowledge, resources, and values around sustainability and connection. We have seen the passion for information about sustainability that is out there, and the need for information and programmes to meet it. So far we have met this need through presentations, workshops, and panel discussions on a range of topics relating to sustainability. Many people have participated and have connected as a result. The feedback has always been very positive. We will continue to provide these events. A natural evolution has been to develop a regular program of Sustainable Living Courses.

Based on our 8 years experience as part of Massey University's International honors programme, "Rethinking Globalisation, New Zealand", run by Peter Horsley in collaboration with Boston University, we ascertained from the students who came to us for a week long course, that they were very motivated to explore sustainable practices in more depth and would have liked a more extensive course. They were impressed with Golden Bay and what was happening here in sustainability.

Over several years we have put out surveys and questionnaires at our events at The Golden Bay Community Gardens & Sustainable Living Centre (GBSLC) asking what our local community has interest in learning more about and the top answer has consistently been sustainable living.

We have consistently surveyed our WWOOFERS, cultural exchange workers, and they request more hands on projects and formal classes in sustainable living.

In addition, feedback from former permaculture students who have completed 3-week long permaculture design courses shows that they want more depth and breadth of the type offered by our course.

Global Picture

In the larger picture of life on Earth, as we look at our world and the state of OUR planet and climate change caused by human activity, we feel that this is an excellent time to launch a course of this type. People have never been more aware of the need to change how we live nor more willing. Our target audience is first and foremost in New Zealand with an emphasis on reaching out in the local communities in Nelson/Tasman,



Canterbury, the West coast and beyond. We will also be doing outreach offshore in Australia, Europe and the US.

A local journalist, recently returned from Europe, shared that Europeans are extremely concerned about the future of our environment especially after this year's summer droughts and crop failures, so much so that talk of "7th generational living" is everywhere and people there are looking for solutions.

As a final note here, we quote Minister for Primary Industries, Hon. Damien O'Connor, from his letter of support for the course, "I believe that sustainable living practices are becoming an ultimatum not a choice. Knowledge, education, & training are required."

"Golden Bay Sustainable Living Course" Solution

The GBSLC is an accessible training course to upskill young people aged 18 – 35, (we may accept older people on a case by case basis) in a whole range of new available tools to make communities kinder, smarter, healthier - more sustainable. With its multiple focus areas from eco-building to organic food growing, it will have a broad appeal and prepare students for a flexible pathway forward into life.

The Golden Bay Sustainable Living Course bridges the gap between 3 week and 6 month permaculture design courses and other shorter workshops in the areas we teach. It offers a one stop introduction and deeper, hands-on, practical training into many areas we need to address in creating a more sustainable world and looking after our local environment.

Business Model

Revenues are from course fees.

Future revenue streams may include shorter trainings by separating out course areas into stand alone offerings, sponsorships & revenue from "sustainability tourism". See year 3 objectives.

Course Fees

Includes 355 hours of instruction, lunch, teas, field trip transportation, administrative support.

Year One: \$2750 + accommodation for NZ/AU participants \$2950 International

Early bird: \$250 discount.



Year Two: \$2950 + accommodation for NZ/AU participants \$3200 International
 Early bird: \$250 discount.
 Year Three: \$3245 + accommodation for NZ/AU participants \$3520 International
 Early bird: \$250 discount.

Objectives & Timelines

Start Up: August 2018- March 2019

Course Development:

- start-up group will form a “Curriculum Team” with people, businesses and organizations in the Nelson/Tasman community, mainly Mohua/Golden Bay who can be tutors, course developers, and contribute place-based experiential learning opportunities
- build the detailed course program for the pilot offering of the Sustainable Living Course (SLC) in March

Local Marketing & Sponsorship:

- travel to groups & individuals in Nelson/Tasman to tell them about SLC and get their support with promotion and potentially sponsorship
- distribute posters in libraries, tertiary education institutions and on noticeboards
- offer cross promotion of Nelson/Tasman sustainable businesses on our website in exchange for presence on their website
- approach the same businesses for sponsorship engagement
- use local FB groups and GB Weekly newspaper to promote our course
- advertise with Permaculture in New Zealand (PINZ) and other similar NZ organisations with reach into our target market

Wider Marketing:

- design ads and a video for FB, magazines and online listings to promote the course
- identify magazines and online portals involved in sustainability such as FB in the following countries: Germany, France, Netherlands, UK, US, Argentina & Brazil – we get many visitors from these countries already
- identify online portals in New Zealand that focus on foreign nationals in our target market such as “France In New Zealand”.

Website Development: www.gbslc.org

- build basic website – completed August/September
- further develop the site as needed - ongoing



Build A Classroom:

- enclose our current Maker Space to make it into a pop up classroom
- purchase a projector, screen, more chairs & tables, bookshelves, etc.
- allow for wider community use of the classroom outside the course calendar

New Signage:

- commission and install new signage for The Golden Bay Community Gardens & Sustainable Living Centre (GBSLC) sign on the main road and info sign on the property.

Develop Course Library:

- creating a course library of books, magazines and films on site
- work with our local library to have them bring in as much as possible

Continue Normal Operations of The Golden Bay Community Gardens & Sustainable Living Centre:

- through the Garden's Co-ordinator position continue the development and outreach of our current programmes, all of which make the GBSLC the perfect location to host the SLC
- oversee educational programmes, from workshops small and large, from seed saving to our Sustainable Golden Bay Hui to summer student programmes and more
- support those who come to GBSLC from allotment holders to cultural exchange volunteers to community members seeking information or resources
- support the small local businesses who use our facilities to make and promote their products: Fat Carrot, Flower Power Honey, MamaZing Kombucha.

Years 1 & 2**March 2019 – March 2021**

- deliver a quality experience for our students
- mature the course content and delivery based on their feedback and feedback from hosts, local organisations, businesses and our tutors
- develop evaluation criteria
- continue to build our course library
- evaluate, develop and run our marketing campaign
- maintain and upgrade our classroom and site facilities
- support local student personal projects that directly contribute to our community



and facilities helping us to increase our impact on community connection, participation, learning & support. For example: building the business case for setting up a local composting programme as a viable sustainable business

- by end year 2 begin looking at NZQA certificate status

Year 3

- continue to investigate NZQA certificate status and begin the application process
- develop the offering of the course core areas as separate stand alone courses in summer and winter with a focus on local participation with potential for engaging with Nelson/Tasman region schools and tertiary institutions
- as part of our strategy for the Sustainable Living Centre, we plan to showcase sustainability across many sectors including energy, housing, food growing, & business development. This plan includes future purchase or building of a variety of buildings/dwellings as showcases of sustainable building practices such as a tiny home & cobb homes, composting toilets, solar showers, grey water treatment, recycling, composting, propagation, mulching and more. Some of these projects can in turn create more income for future projects and will attract "sustainability tourism" meaning visitors to the Bay will pay entry fees to tour our facilities and see our projects.

Program Evaluation

Our programme success can be measured in several ways. First by determining if the course itself achieved its educational aims. Second by determining the impact of the course and other GBSLC activities on our wider community, and third by tracking its success in creating a self sustaining financial foundation for the continued operations of The Golden Bay Community Gardens & Sustainable Living Centre.

Achievement of Educational Aims

Our goal is for students to reach competency in their knowledge of course content and their ability to apply new skills to real world solutions. During and after the course we will evaluate student competency in the core course areas through observation, assignments, personal projects, surveys and testimonials. During the course they will engage in real world work and projects in various locations in Golden Bay on farms, in private residences where people have built eco-buildings and other sustainable projects, in local businesses and on location at the GBSLC. As part of their personal project, they will be expected to pick an area of interest and a mentor as they develop an idea into a viable project. At intervals of 6, and 12 months after the course, we will



gather data through a survey sent out to students asking:

- how they have applied their knowledge and skills
- how this has enhanced their community and created greater connection and resilience
- how effective the tutors were
- how relevant the course material was
- how it helped them with work opportunities and tertiary studies, and
- what recommendations they have for improving the course.

We will ask tutors for their evaluation of the course, its management and delivery, how effective we were in supporting them and providing for their needs, and for any recommendations they have for improvement. We will also track attendance and ask for feedback from locals who attend our other workshops and trainings.

Impact to the Wider Community

To know the impact of the course, we will survey the organisations, businesses, and individuals who benefited from the work and input of our students. We will ask how they were impacted and how they think we can improve the programme. We will hold a Celebration Day at the end of each course and invite the community to attend. After they have seen the student presentations of their work, we will get their feedback on how they feel the projects and course can impact our community, if they see applications to their own lives, and how future course participants could benefit their projects and ideas. We will ask for progress reports from those who do gain from the student work.

In addition we will do our best to track student expenditures in the community in terms of rent paid and ask them how much money they actually spent. These questions will be part of their exit survey. We will get feedback from student hosts also.

Self-Sustaining Financial Foundation: we will track our income and expenses to monitor our progress towards this goal and ultimately to show clearly our success at reaching it.



Our Team

The Golden Bay Community Gardens & Sustainable Living Centre is run by Te Wharerangi Trust with 5 trustees and 4 part time people: course developer, gardens co-ordinator, accountant, & corrections supervisor.

The following people are directly involved in the Sustainable Living Course

Sol Morgan - Founder "GrowWise". Trust Chairperson, Course Developer & Tutor



Avid organic gardener, edible landscaper, seed saver and community garden advocate with over thirty years experience. Sol is passionate about sharing his knowledge and inspiring people of all ages to live in a more sustainable way. He is the visionholder for the Sustainable Living Course and Centre.

Sol has a BAg (Hons) specialising in Biological Husbandry, mentored by Bob Crowder. After university, he worked in horticulture for DSIR doing tree nutrient analysis. In 1994 he started Koanga Seeds with Kaye Baxter in Kaiwaka.

Before starting Growise Consultancy, Sol was the co-ordinator of Waimarama Community Gardens in Nelson, and the Golden Bay Community Gardens & Sustainable Living Centre run by the Te Wharerangi Trust, of which he is now the chairperson.

There he had a range of roles, including as the Production Manager growing \$40,000 worth of veges per year for local consumption.

He began his Sole Trader business, 'Growise Consultancy', in 2007 when he left his job as the co-ordinator at Golden Bay Community Gardens & Sustainable Living Centre. The overarching aim of Growise Consultancy to provide education and advice 'to help people to help themselves' to become food self sufficient. An aspect of this is developing the skills to maintain their own properties along permaculture lines. People who have the finances but decide they don't have the time or skills, commonly employ Sol to do maintenance work such as pruning and gardening. Sol works with suburban-scale properties, 'lifestyle' blocks and farms – from commercial to private household purposes.



Robina McCurdy - Founder, Institute of Earthcare Education Advisor & Course Tutor

Robina has been engaged in community development, organic growing, permaculture design and tutoring on a global scale for the past 25 years.



She is the founder of the Institute of Earthcare Education Aotearoa, co-founder of Tui Land Trust & Community in Golden Bay, NZ and pioneer of the S.E.E.D (Schools Environmental Education & Development) programme in South Africa and Brazil.

She has developed a range of environmental education resources and participatory processes for collective decision-making and action – most notably 'Grounding Vision, Empowering Culture', a community facilitation manual, and 'Grow It!', a Home Garden coaching series.

Robina has taught & applied her powerful community-building methods with households, neighborhoods, schools, farms, ecovillages & bioregions, in Aotearoa/New Zealand and many countries overseas.

She joins SLC as an education program development specialist and course tutor.

Laurence Boomert – Gardens Coordinator & Course Tutor

Laurence has spent 30 years working on a variety of business and social entrepreneur projects usually related to creating solutions for our times.

Including:

- Sustainable Land Management projects
- Founding NZ's First Green Business Network which grew to 500 member companies under his directorship
- With his environmental consultancy Sustainable Solutions Laurence wrote the 30,000 print run Vision Hauraki Sustainable Business Program
- Co-founder New Economics Party
- TV Presenter (Maggies Garden Show)
- Speaker & Educator on Community solutions, resilience and revitalisation incl; a 21 State tour of the US in 2013
- Establishing the Whanganui Environment Centre one of NZ's most progressive community environment hubs and showrooms



- Since 2008 he has been a Trustee on 8 charitable trusts dedicated to community and environmental outcomes.

John Massey – Trustee, Course Tutor, Course Developer

John has been involved in the GBSLC for almost 30 years. He knows what kind of sustainable living practises people want to learn about. John has many years of teaching experience in organic horticulture, permaculture, ecology, beekeeping, vegetable and herb growing. Through the years he has developed a wide network of (human)resources in Golden Bay, Nelson region and New Zealand. Tutor: Organic Growing, Personal Well-Being, & Permaculture Design.



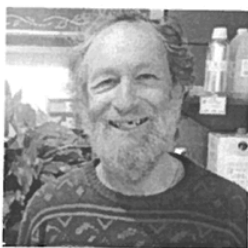
Zahra Lightway M.Ed, - Project Manager, Course Developer

Zahra has a background of entrepreneurial enterprise in education. Over a decade, she has founded companies and organisations in the education transformation arena which develop capacity for teachers, schools, parents and children to understand and grow programs that further the goals of 21st

Century Education.

The development of The Sustainable Living Course is a natural extension of Zahra's mission to create a better world through education. She brings skills and expertise in course development, e-Learning systems, adult training, youth education, and technology in learning.

Murray Rogers – Trustee, Budget Advisor



Murray has been a trustee for TWT for over 20 years. He has a vast amount of knowledge about GBSLC and its users. He is very organized and has sound financial acumen. He feels passionate about the new direction TWT is taking with the Sustainable Living Centre.



GOLDEN BAY GRAND STAND RESTORATION PROPOSAL (form number)

The Golden Bay Grandstand Restoration Society & the Golden Bay Grand Stand Community Trust acknowledge the legal use rights of the A&P Society & have agreed to the following staged upgrading of the Grand Stand building as the most appropriate process to get the grandstand operational & restored. The proposal is based on the current decommissioned state of the building.

The groups request that you help provide a mandate for the process laid out below by ticking the box of your choosing at the bottom of the page & forward this form to (T.B.A) either by hand, post, fax (T.B.A.), or scan & email to qbgrandstand@gmail.com

CLOSING DATE FOR RESPONSES – FRIDAY 20/10/18

➤ **STAGE ONE OBJECTIVE – GET GRAND STAND OPERATIONAL**

INCLUDES – Revalidating of Structural Engineer’s Building Report.
Temporarily reinstate ground floor interior linings.
Reinstatement of stairs.
Restricting Grand Stand occupancy to 299.

BUDGET – T.B.A.

TIME FRAME – In time for the 2019 A&P Show



➤ **STAGE TWO OBJECTIVE – DEMOLISH SQUASH COURT & RESTORE. JOHN END OF BUILDING**

INCLUDES – A BUILDING CONSENT FOR:
Demolition of Squash Courts, Women’s Toilet & Bar.
Making good exterior cladding to St John end of building.
Replacement of asbestos cladding on gable ends of the Grand Stand & adding original apex vents.
Adding eaves to the St John gable end of Grand Stand.
Adding new window(s) to gable end(s) of Grand Stand.

BUDGET – \$70,000 (draft estimate)

TIME FRAME – Once funding is secured but hopefully by the 2020 A&P show



➤ **POSSIBLE STAGE THREE – GET GROUND FLOOR AREA OPERATIONAL** (subject to viability, finance & enthusiasm)

INCLUDES – A BUILDING CONSENT FOR:
Permanent ply strengthening to ground floor walls as per Structural Engineer’s Report.
Reconfiguring of existing rear lean-to spaces for toilets/storage etc. for users of the space.

BUDGET – Determined once layout has been confirmed.

TIME FRAME – Determined once funding is secured.



➤ **POSSIBLE STAGE FOUR - COMPLETE RESTORATION OF BUILDING**
(This may replace Stage Three & will be subject to finance & enthusiasm)

INCLUDES – A BUILDING CONSENT FOR:
Possible demolition of front extension & rear lean-to.
Making good exterior cladding to areas of demolition.
New (compliant) balustrade & stairs to at least the Southern end of the building.
Any desired additional restoration to the building.

BUDGET – Determined once layout has been confirmed.

TIME FRAME – Determined once funding is secured.



Please tick ONE option

SUPPORT THE PROPOSAL ABOVE

DON'T SUPPORT THE PROPOSAL

For additional comments phone Jill - 5258304 or email qbgrandstand@gmail.com

Emma Gee

From: E Sage (MIN) <E.Sage@ministers.govt.nz>
Sent: Wednesday, 10 October 2018 10:11 a.m.
To: Emma Gee
Subject: RE: Whitebaiting

Tēnā koe Emma,

On behalf of Hon Eugenie Sage, Minister of Conservation, Minister for Land Information and Associate Minister for the Environment, many thanks for forwarding the Golden Bay Community Board's letter regarding the use of sock nets for whitebaiting. I have forwarded the letter on to the Minister for her consideration and you can expect to hear from her in due course.

Thanks again for taking the time to write to Hon Eugenie Sage.

Ngā mihi

Michael Harbrow | Private Secretary (Conservation)
 Office of Hon Eugenie Sage
 Minister of Conservation, Minister for Land Information, Associate Minister for the Environment
 Parliament Building, P.O. Box 18041, Wellington 6160
Michael.Harbrow@parliament.govt.nz

From: Emma Gee [mailto:Emma.Gee@tasman.govt.nz]
Sent: Monday, 24 September 2018 10:30 AM
To: E Sage (MIN) <E.Sage@ministers.govt.nz>
Subject: Whitebaiting

Dear Hon Eugenie Sage

Please find attached a letter from the Golden Bay Community Board.

Kind Regards
 Emma

Emma Gee
 Team Leader Customer Services - Takaka
 DDI (03) 525 0054 | Emma.Gee@tasman.govt.nz
 PO Box 74, Takaka 7142, NZ



This e-mail message and any attached files may contain confidential information, and may be subject to legal professional privilege. If you are not the intended recipient, please delete.

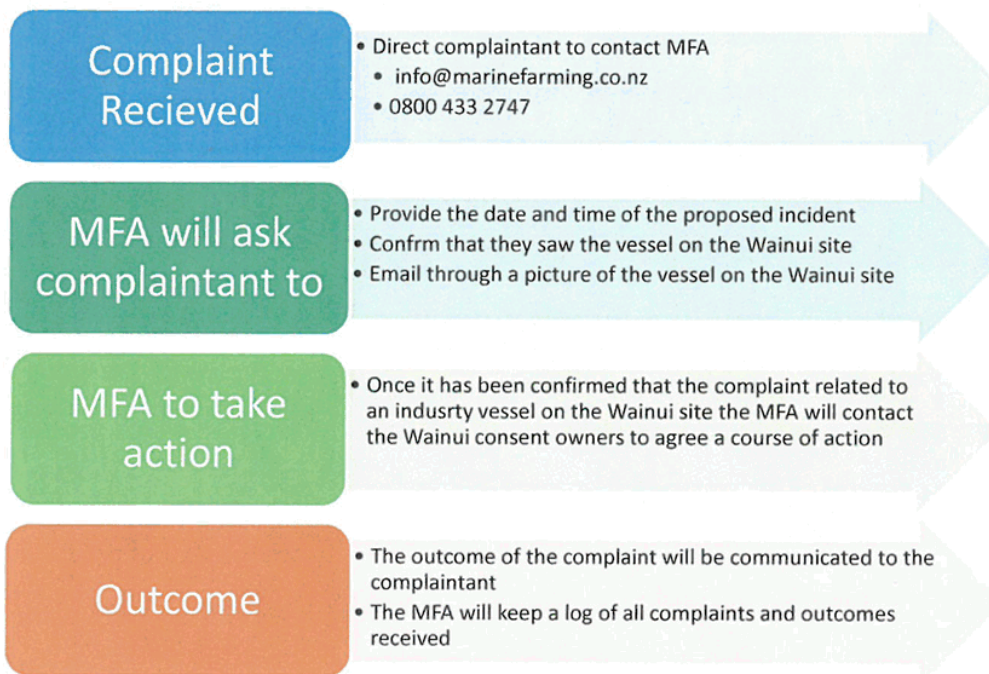
Wainui Spat Farms

Flow Chart for Complaints

The MFA encourages farmers to adhere to the industry Code of Practice to avoid, remedy or mitigate environmental impacts from marine farming activities in Wainui Bay spat catching sites on other users and residents.

The Wainui farmers have developed the process below which will be followed when complaints relating to the Wainui Spat Farms are received.

This process will be given to the Chair of the Community Group so they are aware of the process that will be followed and the information needed by industry when complaints are made:



Wainui Bay Spat Farms Annual Consent Holder Meeting

11 Oct 2018 6.30pm

Report

Present:

Peter Griffiths (land owner)
Nick Feint (land owner Tui community)
Greg Smith & Dean Higgins (Kono)
Brian Godsiff (Clearwater)
Rosalind Squire (TDC)
Grant Knowles (Community Board)

As there were just a hand full of people for the meeting it was very informal

Rosalind started the meeting by explaining the court decision of the Private plan change to the Tasman Resource Management Plan (TRMP) which was for Wainui spat catching farms from discretionary to controlled, defaulting to a restricted discretionary activity if thresholds for controlled activity were not met

This was to provide certainty of spat supply in the future and recognise Wainui is the first ranking site for reliability in New Zealand and the entire national mussel industry is dependant on this area and to ensure this would not need to grow in the future

Several parties objected this change so there has been an environment court hearing

The outcome was to allow in part and refuse in part however after reading the court decision, the spat catching will still be discretionary but also recognises the area as one of special character so when the consents come up for renewal in 2024 there will be no guarantee they will be granted.

In the meantime, there has only been one complaint from local Nick Feint about extra and late noise and was discussed at length. Nick will follow this up and gather more evidence to see what might be causing the disturbance. It was mentioned that with the health and safety rules, boats don't work 24 hours a day and unlikely to be out past 9pm Nick was thought the noise was coming from the "ring road" mussel farm which is in Golden Bay. Everybody was interested in finding the source of the disturbance as soon as possible and Nick will be gathering as much evidence as he can.

There was one incident from the land to the Mussel boats with a laser strike which temporarily blinded 2 of 3 crew members of a boat. The incident was reported to the police and the youth was spoken to and it was deemed to be unintentional consequences.

The Wainui spat farms also produced a document showing the flow chart for complaints and I have attached tis for your information

Most people at the meeting were disappointed that there was so little notice of the meeting and so next year the invites will be going out on the 20 September and the meeting will be held at the yacht club on the 10 October.

The meeting was over by 8pm.

I would like to thank everybody for attending.

Grant Knowles

Golden bay Community board

Item

Attachment 6

169 Ward Holmes Rd
Rd 2
Takaka 7182
pands@gaffneys.co.nz



Heritage
Golden Bay Inc.

Golden Bay Community Board
c/o Abbie Langford

12 October 2018

Dear Abbie and fellow board members,

Thank you most sincerely for the recent funding of \$500 you gave to Heritage Golden Bay to assist in the funding of the plaques installed on the curved wall outside the Takaka Memorial Library.

This has been our biggest project to date and the total cost came to \$7435.14. We are a completely voluntary group and without outside funding we would not have been able to accomplish this project.

We thank you very much.

Yours sincerely,

Barry Cashman
Chairman, Heritage Golden Bay





TAX INVOICE

Golden Bay Community Board

Invoice Date 26 Oct 2018
Invoice Number INV-0118
Reference Donation
GST Number 14-190-215

Collingwood Area School
 Lewis Street
 RD 1 7073
 Collingwood
 NEW ZEALAND
 03 524 8125
 admin@collingwood-area.school.nz

Description	Quantity	Unit Price	Amount NZD
Donation to 2018 Prizegiving	1.00	100.00	100.00
TOTAL NZD			100.00

Due Date: 20 Nov 2018

Please make payment by direct credit into bank account: 03-1711-0007692-00
 Please contact the school on: 03 524 8125 or by email to: admin@collingwood-area.school.nz with any queries.



PAYMENT ADVICE

To: Collingwood Area School
 Lewis Street
 RD 1 7073
 Collingwood
 NEW ZEALAND
 03 524 8125
 admin@collingwood-area.school.nz

Customer Golden Bay Community Board
Invoice Number INV-0118
Amount Due **100.00**
Due Date 20 Nov 2018
Amount Enclosed _____
 Enter the amount you are paying above



TAX INVOICE

Golden Bay Community Board

Invoice Date 1 Oct 2018
Invoice Number INV-0182
Reference Prizegiving Donation
GST Number 13-691-223

Golden Bay High School
 12 Waitapu Road
 Takaka 7110
 Nelson
 NEW ZEALAND
 03 525 9914
 postie@gbh.school.nz

Description	Quantity	Unit Price	Amount NZD
Donation for Golden Bay High School Prizegiving 2018	1.00	100.00	100.00
TOTAL NZD			100.00

Due Date: 20 Nov 2018

Please make payment by direct credit into bank account: 03-1354-0370134-00
 Please contact the school on: 03 525 9914 or by email to: postie@gbh.school.nz with any queries.



PAYMENT ADVICE

To: Golden Bay High School
 12 Waitapu Road
 Takaka 7110
 Nelson
 NEW ZEALAND
 03 525 9914
 postie@gbh.school.nz

Customer Golden Bay Community Board
Invoice Number INV-0182
Amount Due **100.00**
Due Date 20 Nov 2018
Amount Enclosed _____
 Enter the amount you are paying above

Emma Gee

From: Emma Gee
Sent: Wednesday, 24 October 2018 2:05 p.m.
To: 'stay@autumnfarm.com'
Subject: Golden Bay Community Board Funding

Hi Peter

Chair Langford has asked me to let you know that the Board have a new special fund and would like to invite the society to apply once the application forms and terms of reference are decided.

We will keep you informed.

Kind Regards
Emma

On Behalf Of Golden Bay Community Board

Emma Gee

From: andy clark <wanderingandy@hotmail.com>
Sent: Wednesday, 24 October 2018 2:52 p.m.
To: Emma Gee
Subject: Re: Grandstand Proposal

Thanks Emma,

I'll chat directly to the Chair about the board's ability to make its own decisions about whether it supports the staging & level of restoration of the grandstand which is what I was presenting which has nothing to do with the outstanding legal issue.

Cheers
Andy

From: Emma Gee <Emma.Gee@tasman.govt.nz>
Sent: Wednesday, 24 October 2018 2:45 PM
To: 'wanderingandy@hotmail.com'
Subject: Grandstand Proposal

Hi Andy

Chair Langford has asked me to pass on to you that the Board have received the Grandstand proposal and as the matter is ongoing the Board are prepared to wait for an outcome between parties.

Kind regards
Emma

On behalf of Golden Bay Community Board

Emma Gee
Team Leader Customer Services - Takaka
DDI (03) 525 0054 | Emma.Gee@tasman.govt.nz
PO Box 74, Takaka 7142, NZ



This e-mail message and any attached files may contain confidential information, and may be subject to legal professional privilege. If you are not the intended recipient, please delete.



Project De-Vine Trust

An example of community led
conservation action

Presentation to the Golden Bay
Community Board Oct 2018

How Project De-Vine started

2005 – 2007

- Chris and Silvia Rowse are fed up with pulling up hundreds of banana passion vine seedlings on their property in Golden Bay.
- Their neighbours are also overwhelmed.
- “Rocklands Road Weedbusters” is formed.
- Banana passion vine is listed for ‘Progressive Control’ in Golden Bay.



First funding

2009 / 10

- Applied with 15 other properties and received funding from the DOC Biodiversity Condition fund and from the Tasman District Council.
- Killed over 30,000 vines manually.
- Recruited the first paid weedbusting team.



Further funding as a greater area is added

- Over 2011 / 2013 a further 130 properties brought under control with funding from the DOC Biodiversity Condition fund.
- Since then there have been many more grants in - excess of \$1,330,000.
- Effective control over large parts of Golden Bay

Recent years

- Until 2016, Project De-Vine was under the umbrella of Forest and Bird
- Since then it has become an independent charity – Project De-Vine Trust
- A large part of the Trust's work is on private land.

Project De-Vine - Primary Objectives

- To control Banana passion vine, Old man's beard and other key invasive plants in Golden Bay.
- To form a buffer zone, 'halo' around Abel Tasman and Kahurangi National Parks.
- To be leaders in innovative and effective methods of community-led regional-scale weed control.



Model of operation

- Apply to charitable organisations & sponsors to carry out pest vine and other pest plant control work throughout Golden Bay and the 'halo' of Abel Tasman and Kahurangi National Parks.
- Provide a contract service to multiple agencies.
- Contract work allows us to create a small surplus.
- Surplus allows us to start new initiatives.

Model of Operation

This kind of work is different from that of a public agency

- Dependent on local community and land owner relationships
- Funding can be ad hoc.
- It relies on voluntary commitment.



Multiple partnerships & funders

- Tasman Environmental Trust
- Department of Conservation
- Tasman District Council
- Project Janszoon
- Lotteries board grants
- LINZ
- Rata Foundation
- WINZ's 'Flexi-Wage in the Community' to assist people to start back at work
- Smaller funders / sponsors eg Nelson Building Society, Motueka Community Board and local businesses

How we go about control work.

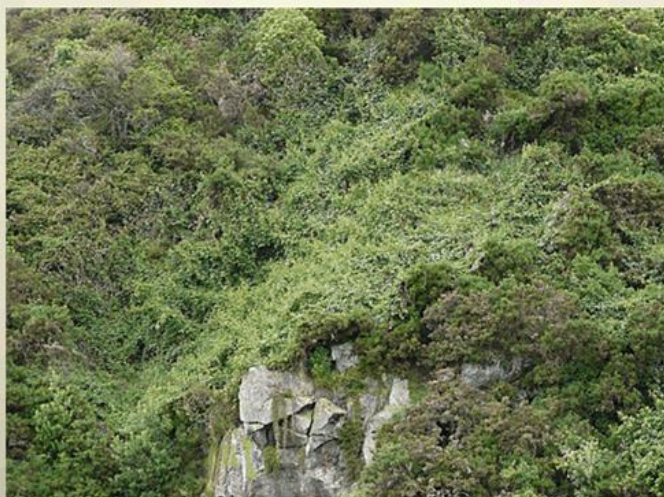
1. Flagship project
2. Fund control of wider area in stages
 - Assessment
 - Primary knockdown
 - Ongoing control

Choose a flagship site

- High infestation
- High profile
- Usually public land
- Funding available from land management agency
- Real difference can be demonstrated

Flagship Site - Tata Peninsula

- The coastal slopes were infested with Banana passion vine and Old man's beard.
- The land is owned by Tasman District Council and QEII Trust.
- In 2014 /15 Project De-Vine cleared it of mature vines
- 2016 onwards keeping the seedlings under control
- Now three years of funded control work has followed in the wider Ligar Bay to Tata area.



Tata Peninsula

Before and 3 years after – the same location - Rata trees being planted



Flagship site: Takaka Hill

Project De-Vine has worked with New Zealand Transport Agency to control pest vines on the Takaka Hill road.



Funding a wider area

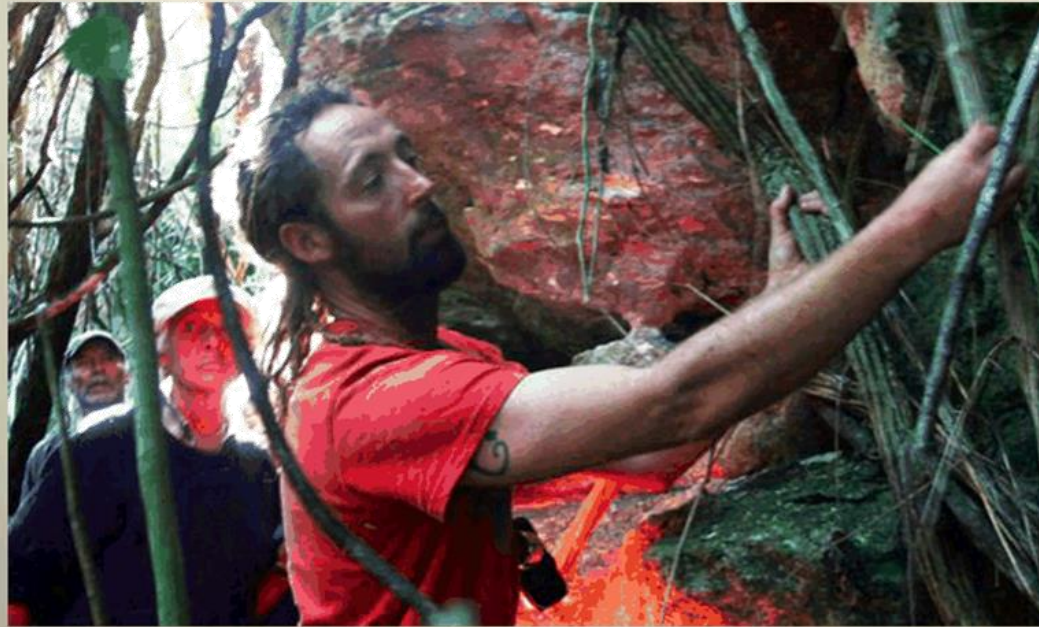
- Use the flagship site, to demonstrate the difference that can be made.
- Find a source of funding to carry out an assessment of the wider area.

Assessment - Takaka Hill & Riwaka to Marahau

- Planning with Janszoon and Tasman District Council to assess and apply for funding to clear this area of Old man's beard, Banana passion vines and wilding Douglas Fir. This will complete the 'halo' around Abel Tasman National Park for the initial knockdown of these vines.
- Offer of free helicopter time following flagship work on Takaka Hill.

Assessment – Takaka River to Onekaka

- Golden Bay Community Trust are funding assessment of the area from the Takaka River towards Onekaka.
- The current area being assessed involves 220 properties.
- Drones help with areas that are hard to see.
- Tasman Environmental Trust recently funded a survey of the lower Takaka valley.



Knockdown

- Our funders are usually Department of Conservation Community Fund & Lotteries.
- Our latest funding has been from Lotteries, with the Tasman Environmental Trust administered Cobb Mitigation Fund contributing as a secured funder.

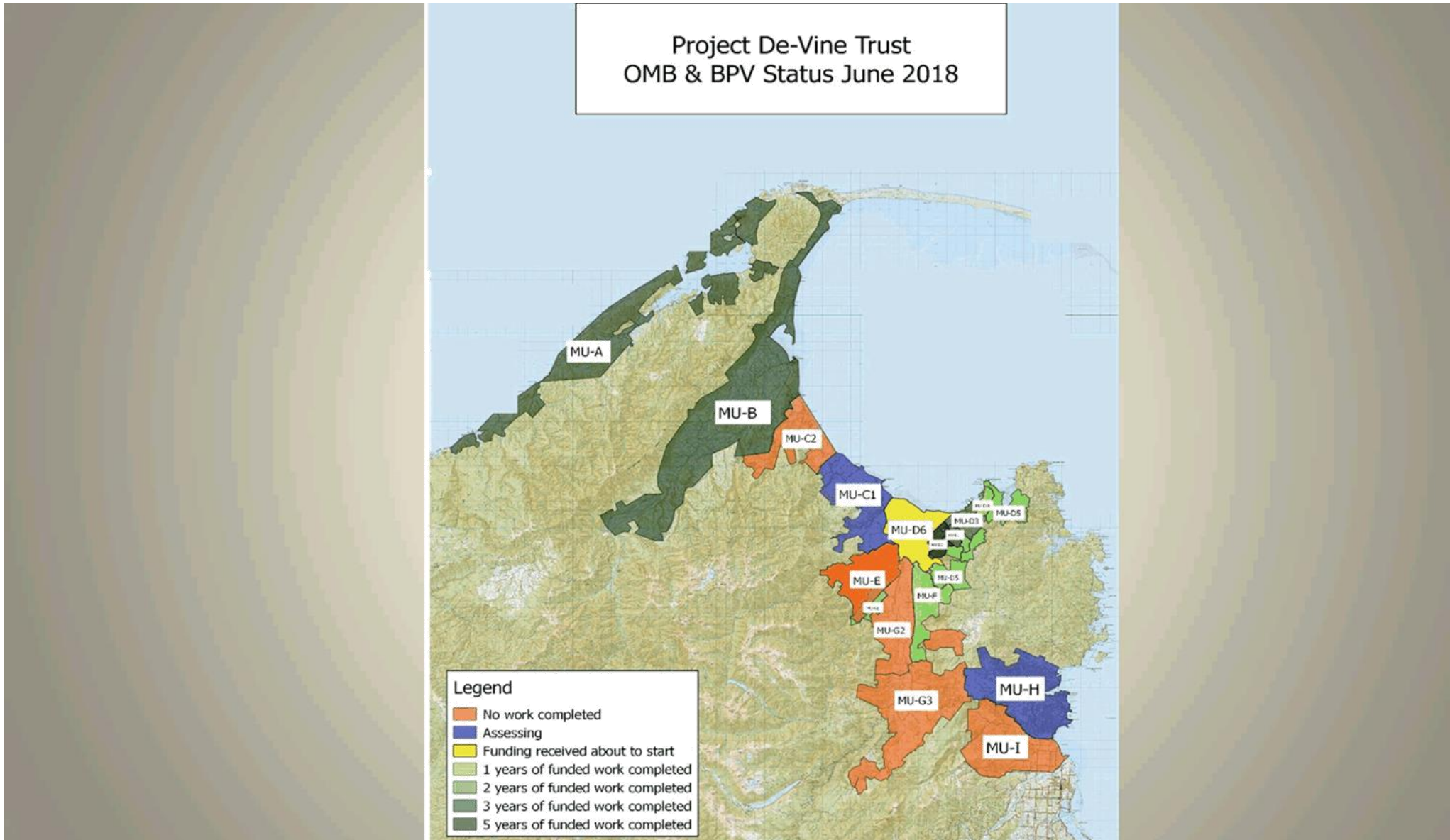


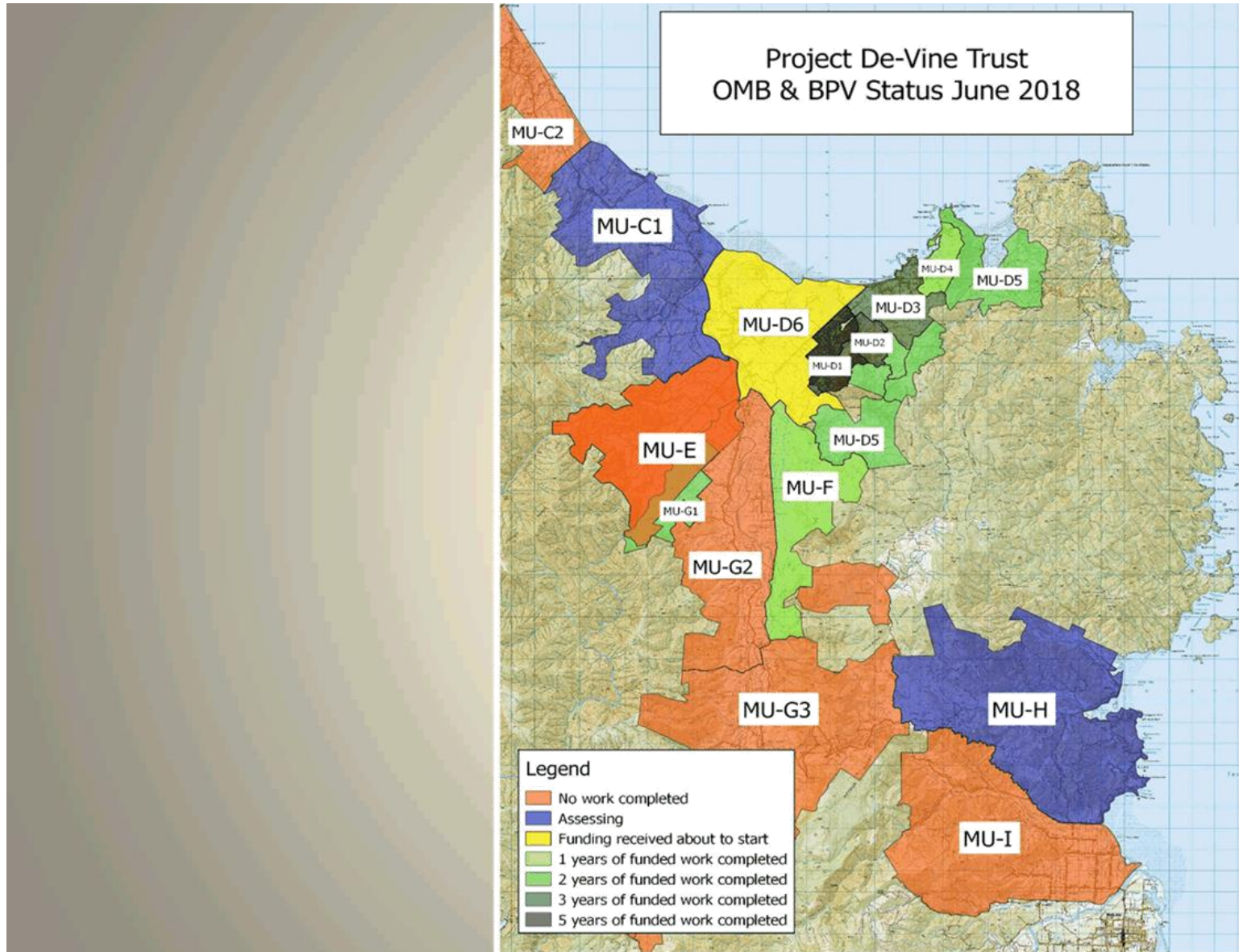
Ongoing control

- Follow up knock down phase with ongoing control.
Our funder for this crucial phase is primarily the Rata Foundation.

We run working bees, in various stages, to activate the local owners in many ongoing control sites.







The following grants were finished off in the 2018 year:

- **Lotteries** grant to control pest vines on a wide range of properties.
- **TDC Special Rates** Grant to control pest vines in Ligar Bay.
- **DOC Dirty Dozen** grant to control pest vines on 19 properties in the Hamama area – MU-G1.
- **QEII** Grant to control Wilding pines in the area of the Takaka Hill Walkway.
- **Internet** NZ grant to set up a database that the team fill in each day in the field, which is stored by our central computer.
- **Horner** grant to supply Glyphosate Gel bottles and refills to landowners as part of our “Swap a bottle” scheme.

We have had 6 grants approved in this last financial year:

- Grants from **Lotteries (\$90k)** and **Tasman Environmental Trust (\$60k + \$7k** for the assessment work) over three years to carry out a major pest plant control programme in the Lower Takaka Valley floor.
- Also in its first year, a Grant from **DOC Community Fund of \$80k** over two years to carry out control work in Ligar Bay to Wainui Hill.
- From **TDC**, we received an additional **\$10k** towards operating costs in August 2017 on top of an annual grant of **\$7500 per year** for the last three years.
- We have been approved in the **TDC Long term plan** for a grant of **\$11,250** per year, with three yearly reviews, towards operating costs.
- **Project Janszoon** have continued with their support of the Lotteries grant, by helping with mapping costs and offering in-kind mapping training in 2018/9 year.
- **Golden Bay Community Trust**, in their first year of giving out grants, gave us **\$7k** to assess properties in MU-C1 for pest plants. Applying to DOC Community Fund for control soon.

New projects for this current year for which we have received, have pending, or are applying for grants include:

- **Rata Foundation approved** for \$35k. For follow up on about 40+ properties for pest plant control work in Pohara to Matenga Rd, Ligar Bay.
- **Rural Service Centre, pending**, to maintain control of BPV and OMB in MU-A & B
- Applying to clear Motupipi Spit of exotic trees and pest plants. This is in conjunction with DOC who will assist with a replanting programme. It will enhance the estuary nearby.
- The **DOC Community Fund** to control pest plants on properties in MU-C1, from the Takaka River to the “Lookout” (just before Onekaka).
- The **Rata Foundation** for follow up control work of pest vines and other plants in the MU-D1, D2 and D5 areas.
- Others to boost our cover of operating costs.

Key pest plants of interest

Banana passion vine

Old man's beard

Climbing asparagus

Woolly nightshade

Purple and White pampas

Italian / yellow jasmine

Other less common control plants
eg. Japanese Honeysuckle, Wild
ginger, Madeira vine



Some statistics

- Number of vines killed manually has passed **373,000: including 325,000 banana passion vines and 40,500 old man's beard.**
- Control work on 448 private properties and counting
- Properties database used to work out properties to be visited.
- Large number of properties go on to manage their own control work.
- Involvement increases as vines decrease.
- June 2015 – Finalist in the Ministry of the Environment Awards – in the Community Leadership category.

Neighbourhood Weedbusting groups

- Neighbourhood Weedbusting groups encouraged and supported.
- Sponsorship from Nelson Building Society and Cut'n'Paste supplying the gel bottles.
- Approach local businesses to fund working bees.
- Support outreach groups – eg Mountain bikers on Codgers track - Nelson, Motueka Valley and Marahau Residents Associations.

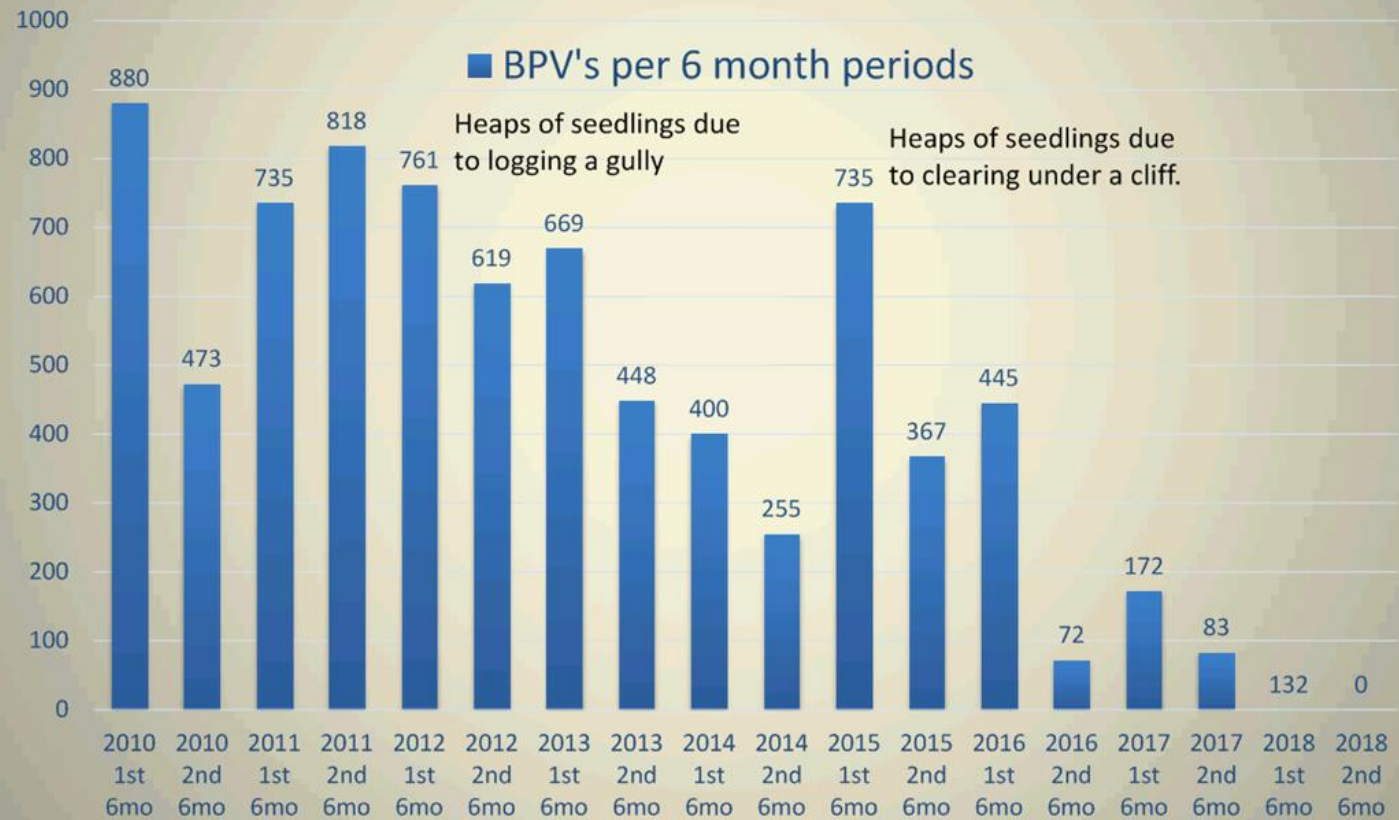


Reporting

- A key part of our work is reporting to landowners and funders .
- We report to them on 4 phases of control.

Phase	Name:	Description
P1	Initial weed control	Dense mature canopy of mature vines and other younger vines and seedlings. Forest canopy smothered by vines.
P2	Follow-up weed control	Some mature vines present. Majority of vines are seedlings. Often in increasing numbers with more light.
P3	Seedbank control	No mature vines present. Lowering density of young vines and seedlings visible.
P4	Long-term maintenance control	No mature vines present. Very low density and distribution of small vines and seedlings visible.

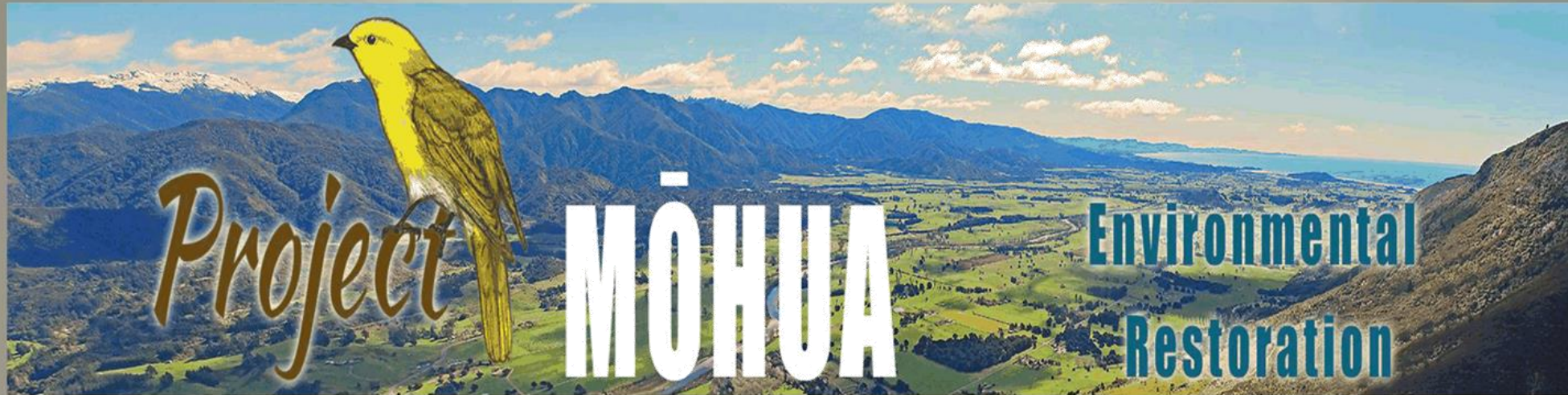
Survey group of four properties: Banana Passion Vine seedlings over 7 years



Environmental practice

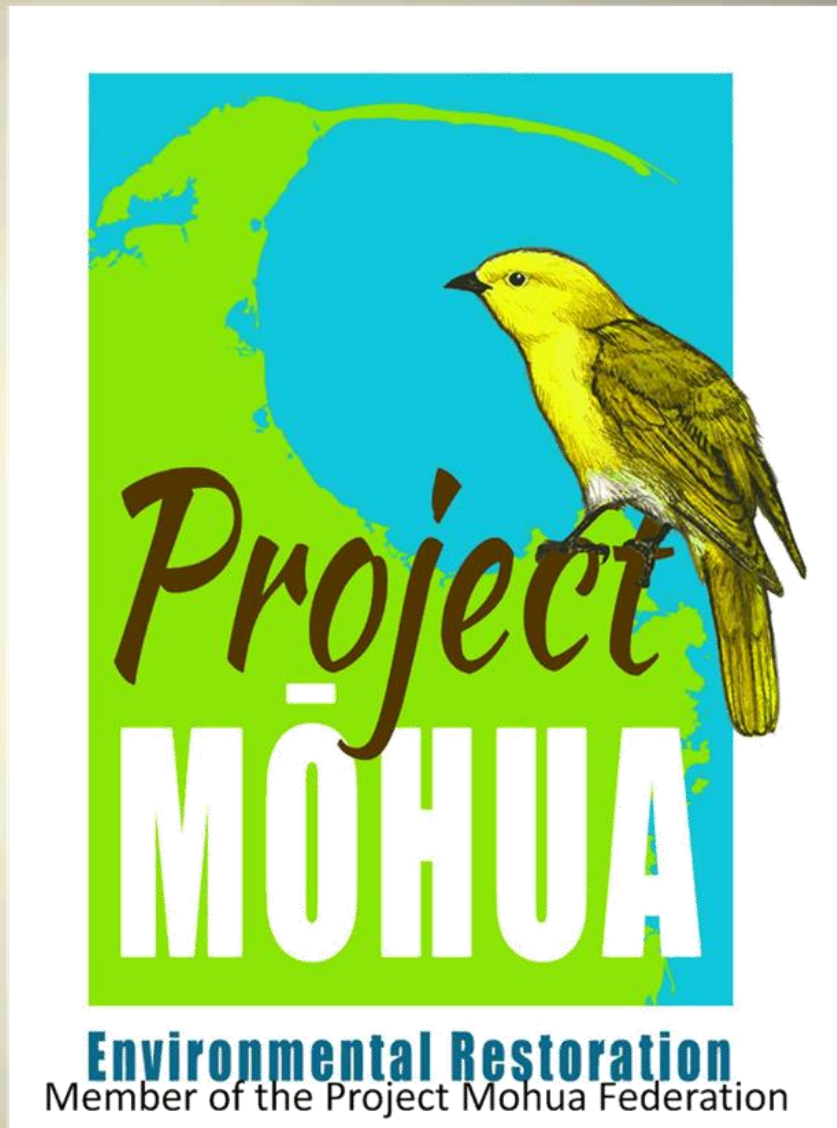
- Project De-Vine uses Glyphosate with the safe surfactant APG.
- We use an organic gel of acetic acid and salt from Cut'n'Paste for those not wanting to use chemicals.





- Project De-Vine participates in wider conservation initiatives for both Golden Bay (Project Mohua) and the top of the South Island (Te Tau Ihu).

**Thank you
for your
attention.**





•Any questions?