



Construction and demolition

WASTE REDUCTION GUIDE AND DIRECTORY



Rethink Waste
Whakaarohia


Nelson City Council
Te Kaunihera o Whakatū


tasman
district council
Te Kaunihera o
te tai o Aorere

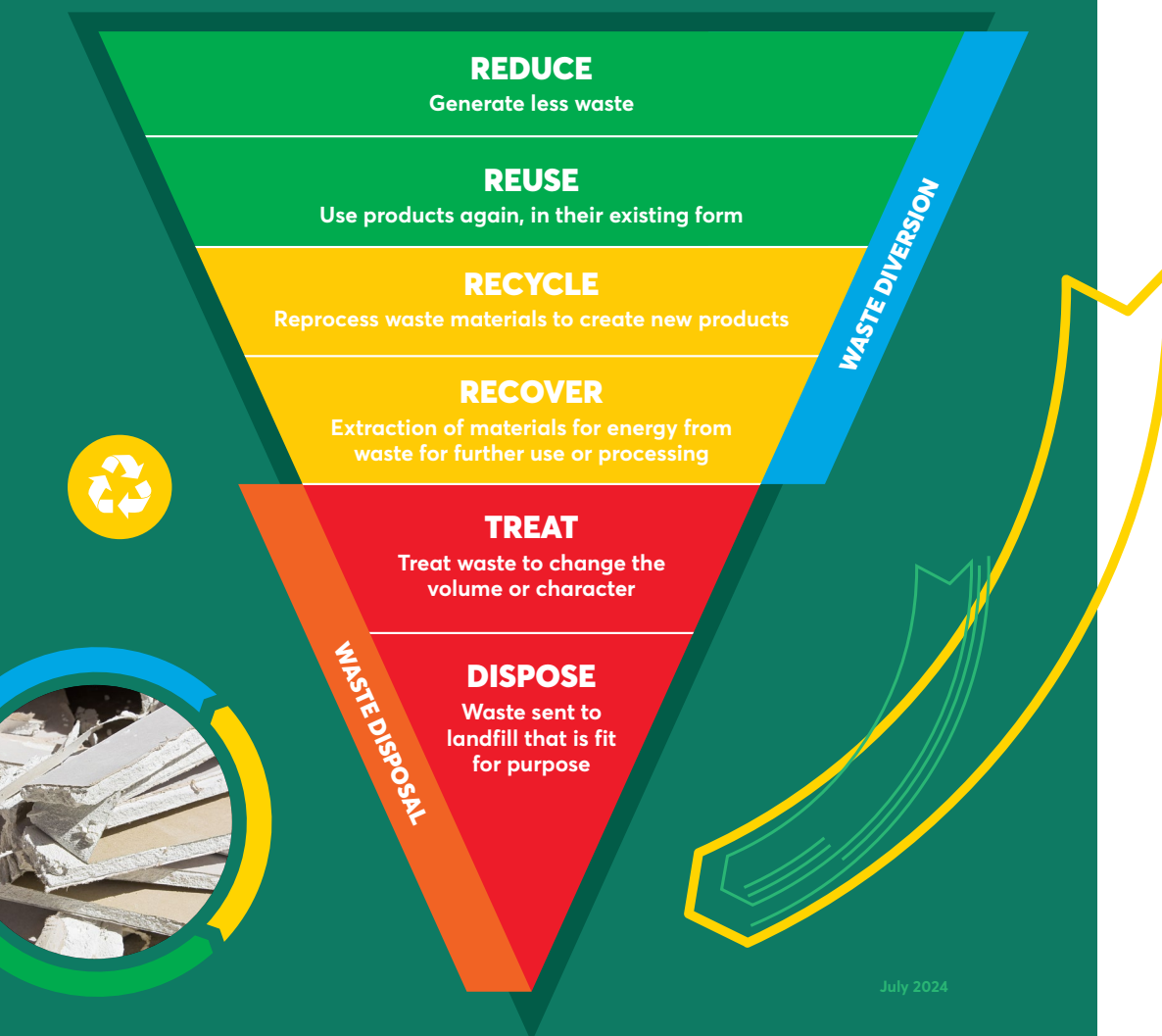
Why reduce waste?

Not only are waste disposal fees increasing, but so is the cost of construction materials.

It makes sense to find ways to avoid these costs and make better use of resources.

What to aim for

The waste hierarchy below describes the different ways of dealing with waste in order of preference. A higher position in the hierarchy means it is better for the environment and generally more cost effective when considering the full material lifecycle.

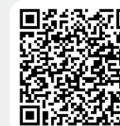


July 2024

How to reduce waste

Before a project starts, look at how waste can be designed out.

- Where are the opportunities to reduce packaging?
- Are you over-ordering?
- Can you make arrangements in advance with manufacturers on what materials they will take back?
- How can skips be managed to stop public putting waste in them?
- If you want to, you can develop a Site Waste Management Plan. Visit www.branz.co.nz/sustainable-building/reducing-building-waste/planning/develop-waste-management-plan or scan the QR code.



- Include any requirements to reduce or sort waste in your contractor and subcontractor agreements.
- Have someone on site responsible for sorting materials that can be recycled or reused.
- Identify destinations for recyclable and reusable materials – check the directory on the following pages.
- Label your bins and skips clearly so everyone knows where things go (multiple languages if necessary).
- Keep track of how much you divert and how much goes to landfill so you can track what you are saving and where you are getting the most benefit from your efforts. BRANZ has some great resources to help with this, such as their **REBRI Waste Transfer Form** (scan the QR code).
- Make sure the project leader is checking regularly that systems are working and trouble-shooting solutions where needed. Bring the conversation into daily pre-starts and toolbox talks
- Celebrate your successes with your teams and clients!



Disclaimer: Nelson City Council, Tasman District Council and partners take no responsibility for the accuracy of the information provided in this directory. Information will also be subject to change.

Resource Diversion Directory

The tables on the following pages list some places in our region which may be able to help **divert your materials from landfill**. We encourage you to also ask the provider how the material is diverted and where their service sits in the waste hierarchy.

Please note that the providers in this directory will have terms, conditions and fees applicable as well as changing availability. It is essential that you contact providers before delivery.

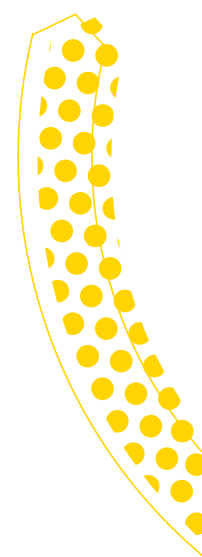
Guide only – please contact the service provider for availability, cost and special conditions

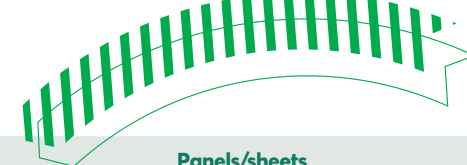
Service provider	Coatings			Electrical					
	Bitumen/asphalt	Plaster	Unused paint/finishes	Appliances	Batteries (excl. car batteries)	Cable drums	Cabling	Fittings	Fluorescent lights/ballasts
Can Plan 03 547 0642 23 Forests Road, Stoke	●	●	●	●	●	✓	✓	●	●
EnviroNZ 03 547 5669 6 Dayson Place, Stoke	●	●	✓	✓	✓	✓	✓	✓	✓
Nelson Environment Centre 03 545 9176 6 Vivian Place, Annesbrook	✓	✓	✓	✓	✓	✓	✓	✓	●
Nexan (Radcliffe Electrical) 03 548 5068 19 Pascoe Street, Tāhunanui	●	●	●	●	●	✓	●	●	●
Nexan (Telfer Electrical Nelson Ltd) 03 548 6611 6 Forests Road, Stoke	●	●	●	●	●	✓	●	●	●
Norwest 027 667 3366 3 Kotua Place, Wakatu Estate, Stoke	✓	●	●	●	●	●	✓	✓	✓
Restore Home Building Supply/DIY Store 03 547 4626 166 Tāhunanui Drive, Tāhunanui	●	●	✓	✓	●	✓	✓	✓	●
SIMS Metal 0800 226 626 2 Merton Place, Annesbrook	●	●	●	✓	●	✓	✓	●	●
Smart Environmental 03 543 9000 14 Fittal Street, Richmond	●	●	●	●	✓	●	✓	●	✓
Weka Peckers Recycling 03 526 7000 97 Robinson Road, Lower Moutere	●	●	✓	✓	✓	✓	✓	✓	●
WM New Zealand 03 548 1166 36 Venice Place, Stoke	●	●	●	●	✓	✓	●	●	●



Guide only – please contact the service provider for availability, cost and special conditions

Service provider	Metals		Masonry							
	Metal	Roofing	Blocks (aerated autoclaved/concrete)	Bricks (clay/concrete)	Chip	Clay (bentonite)	Concrete	Grout/mortar	Stone	Tiles
Can Plan 03 547 0642 23 Forests Road, Stoke	✓	✓	✓	✓	✓	✓	✓	✓	✓	✓
EnviroNZ 03 547 5669 6 Dayson Place, Stoke	✓	✓	✓	✓	✓	✓	✓	✓	✓	✓
Gibbons Construction 03 548 3039 750 Lower Queen Street, Richmond	●	●	✓	✓	✓	✓	✓	✓	✓	✓
Nelson Environment Centre 03 545 9176 6 Vivian Place, Annesbrook	✓	✓	✓	✓	✓	✓	●	✓	✓	✓
Norwest 027 667 3366 3 Kotua Place, Wakatu Estate, Stoke	✓	✓	✓	✓	●	✓	✓	●	✓	✓
Restore Home Building Supply/DIY Store 03 547 4626 166 Tāhunanui Drive, Tāhunanui	✓	✓	✓	✓	●	●	●	●	✓	✓
SIMS Metal 0800 226 626 2 Merton Place, Annesbrook	✓	✓	●	●	●	●	●	●	●	●
Smart Environmental 03 543 9000 14 Fittal Street, Richmond	✓	✓	●	●	●	●	●	●	●	●
Stonescape Garden Supplies 03 528 6344 99 King Edward Street, Motueka	✓	✓	✓	✓	✓	●	✓	●	✓	✓
Weka Peckers Recycling 03 526 7000 97 Robinson Road, Lower Moutere	✓	✓	✓	✓	●	●	●	●	✓	✓
WM New Zealand 03 548 1166 36 Venice Place, Stoke	✓	●	✓	✓	✓	✓	✓	✓	✓	✓





Guide only – please contact the service provider for availability, cost and special conditions

Service provider	Packaging						Panels/sheets				
	Paint containers	Paper/cardboard	Plastic bottle/container #1 PET	Plastic bottle/container #2 HDPE	Plastic bottle/container/bag #5 PP	Plastic wrap #4 LDPE	Composite panel	Fibre cement sheets	Glass fibre reinforced cement (GRC)	SaveBoard (wall lining from TetraPak)	Gypsum wallboard
Can Plan 03 547 0642 23 Forests Road, Stoke	●	✓	✓	✓	✓	✓	●	●	●	●	✓
Dulux (Guthrie Bowron) Nelson 03 548 1114 45 Vanguard Street, Nelson	✓	●	●	●	●	●	●	●	●	●	●
Dulux (Guthrie Bowron) Richmond 03 544 6613 4 McGlashen Avenue, Richmond	✓	●	●	●	●	●	●	●	●	●	●
EnviroNZ 03 547 5669 6 Dayson Place, Stoke	✓	✓	✓	✓	✓	✓	●	●	●	●	✓
Nelson Environment Centre 03 545 9176 6 Vivian Place, Annesbrook	✓	✓	✓	✓	✓	●	✓	✓	✓	✓	✓
Nelson Resene ColorShop 03 548 7110 69 St Vincent Street, Nelson	✓	●	●	●	●	●	●	●	●	●	●
Norwest 027 667 3366 3 Kotua Place, Wakatu Estate, Stoke	●	●	●	●	●	●	✓	●	●	●	✓
Plasback 0508 338 240 506 Blenheim Road, Sockburn, Christchurch	●	●	●	✓	✓	✓	●	●	●	●	●
Restore Home Building Supply/DIY Store 03 547 4626 166 Tāhunanui Drive, Tāhunanui	●	●	●	●	●	●	✓	✓	✓	●	✓
SIMS Metal 0800 226 626 2 Merton Place, Annesbrook	✓	●	●	●	●	●	●	●	●	●	●
Smart Environmental 03 543 9000 14 Fittal Street, Richmond	✓	✓	✓	✓	✓	●	●	●	●	●	●
Weka Peckers Recycling 03 526 7000 97 Robinson Road, Lower Moutere	✓	●	●	✓	✓	✓	✓	●	●	✓	✓
WM New Zealand 03 548 1166 36 Venice Place, Stoke	●	✓	✓	✓	●	●	●	●	●	●	✓





Guide only – please contact the service provider for availability, cost and special conditions

Service provider	Timber				Joinery		Insulation				
	Engineered wood/panels	Plywood	Solid treated	Solid untreated	Aluminium	Wood/uPVC	Board	Glasswool	Polystyrene	Synthetic	Wool blend
Azwood 0800 299 663 31 Factory Road, Brightwater	●	●	●	✓	●	●	●	●	●	●	●
Can Plan 03 547 0642 23 Forests Road, Stoke	●	●	●	✓	✓	●	●	●	●	●	●
EnviroNZ 03 547 5669 6 Dayson Place, Stoke	●	●	●	✓	●	●	●	●	●	●	●
Expol 0800 86 33 73 EXPOL Live app	●	●	●	●	●	●	●	●	✓	●	●
MenzShed Nelson, Motueka, Golden Bay, Waimea, Tapawera. See menzshed.org.nz	✓	✓	✓	✓	●	●	●	●	●	●	●
Mitre 10 Mega Nelson 03 547 0747 99 Quarantine Road, Annesbrook	●	●	●	●	●	●	●	●	✓	●	●
Nelson Environment Centre 03 545 9176 6 Vivian Place, Annesbrook	✓	✓	✓	✓	✓	✓	✓	✓	✓	✓	✓
Norwest 027 667 3366 3 Kotua Place, Wakatu Estate, Stoke	✓	●	✓	✓	✓	●	●	✓	●	●	✓
Restore Home Building Supply/DIY Store 03 547 4626 166 Tāhunanui Drive, Tāhunanui	✓	✓	✓	✓	✓	✓	✓	✓	✓	✓	✓
SIMS Metal 0800 226 626 2 Merton Place, Annesbrook	●	●	●	●	✓	●	●	●	●	●	●
Terra Lana 03 982 0211 55 Francella Street, Bromley, Christchurch	●	●	●	●	●	●	●	●	●	●	✓
Weka Peckers Recycling 03 526 7000 97 Robinson Road, Lower Moutere	✓	✓	✓	✓	✓	✓	✓	✓	✓	✓	✓
WM New Zealand 03 548 1166 36 Venice Place, Stoke	✓	●	●	✓	●	●	●	●	●	●	●

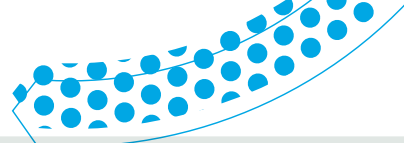


Guide only – please contact the service provider for availability, cost and special conditions

Service provider	Plumbing			Refrigerants	Glass		
	Butylene	PE	uPVC/ stormwater/ wastewater	Refrigeration/ air conditioning equipment	Bottles/ jars	Float	Laminated/ double glazed
5R Solutions 027 217 7969 25 McPherson Street, Richmond	●	●	●	●	●	✓	✓
Can Plan 03 547 0642 23 Forests Road, Stoke	●	✓	✓	●	✓	●	●
EnviroNZ 03 547 5669 6 Dayson Place, Stoke	●	✓	✓	●	✓	✓	✓
Nelson Environment Centre 03 545 9176 6 Vivian Place, Annesbrook	✓	✓	✓	●	✓	●	✓
Norwest 027 667 3366 3 Kotua Place, Wakatu Estate, Stoke	●	●	✓	●	●	●	✓
Restore Home Building Supply/DIY Store 03 547 4626 166 Tāhunanui Drive, Tāhunanui	✓	✓	✓	●	✓	✓	✓
SIMS Metal 0800 226 626 2 Merton Place, Annesbrook	●	●	●	✓	●	●	●
Smart Environmental 03 543 9000 14 Fittal Street, Richmond	●	●	●	✓	✓	●	●
Weka Peckers Recycling 03 526 7000 97 Robinson Road, Lower Moutere	✓	✓	✓	✓	●	✓	✓
WM New Zealand 03 548 1166 36 Venice Place, Stoke	●	✓	✓*	●	✓	●	●

*Nelson Tasman regional partner for the Marley/Aliaxis product stewardship scheme





Guide only – please contact the service provider for availability, cost and special conditions

Service provider	Other				Other				
	Floor coverings	Sanitary fittings	Building wrap	Clean fill (virgin soil, clays)	Fastenings	Greenwaste	Soil with greenery (grass, roots)	Tools	Building deconstruction/removal
Azwood 0800 299 663 31 Factory Road, Brightwater	●	●	●	●	●	✓	●	●	●
Can Plan 03 547 0642 23 Forests Road, Stoke	●	✓	●	✓	●	✓	✓	●	●
CJ Industries 03 528 4466 105 Douglas Road, Motueka	●	●	●	✓	●	●	●	●	●
EnviroNZ 03 547 5669 6 Dayson Place, Stoke	●	✓	✓	✓	●	✓	✓	✓	●
Greenwaste to Zero 03 544 8857 18 Cargill Place, Richmond	●	●	●	●	●	✓	●	●	●
Millers Firewood & Landscape Supplies 03 547 6850 127 Bolt Road, Annesbrook	●	●	●	✓	●	●	●	●	●
Nelson Environment Centre 03 545 9176 6 Vivian Place, Annesbrook	✓	✓	●	●	✓	✓	●	✓	●
Norwest 027 667 3366 3 Kotua Place, Wakatu Estate, Stoke	✓	●	●	✓	●	●	●	●	✓
Restore Home Building Supply/DIY Store 03 547 4626 166 Tāhunanui Drive, Tāhunanui	✓	✓	✓	●	✓	●	●	✓	✓
SIMS Metal 0800 226 626 2 Merton Place, Annesbrook	●	✓	●	●	✓	●	●	✓	●
Smart Environmental 03 543 9000 14 Fittal Street, Richmond	●	✓	●	●	●	●	●	●	●
Stonescape Garden Supplies 03 528 6344 99 King Edward Street, Motueka	●	●	●	✓	●	●	✓	●	●
Weka Peckers Recycling 03 526 7000 97 Robinson Road, Lower Moutere	✓	✓	✓	●	✓	●	●	✓	✓
WM New Zealand 03 548 1166 36 Venice Place, Stoke	●	●	✓	✓	●	✓	✓	●	●



Disclaimer: Nelson City Council, Tasman District Council and partners take no responsibility for the accuracy of the information provided in this directory. Information will also be subject to change.



If you would like to suggest any corrections or updates to this guide, please contact us at **less.waste@tasman.govt.nz**

