

**NOTES**

This plan has been prepared to compare different versions of Schedule 16.11A of the Tasman Resource Management Plan which defines the obstacle limitation surface associated with the Motueka Aerodrome.

- Property boundaries have been sourced from LINZ Data Service on 25 July 2022 (shown green).

- Surveyed location of sealed runway infrastructure is shown in Cyan.

- Proposed revised Obstacle Limitation Surface has been derived by scaling plan titled "Tasman District Council, Motueka Aerodrome, Schedule 16.11A Airport Height Controls, (Working Plot - dated 13.07.22) - as provided by Phil Doole. Digitised linework is shown Blue and Red hereon

- Property boundaries have been used to scale and position supplied plans.  
 - LINZ property boundaries agree well with underlying plan.

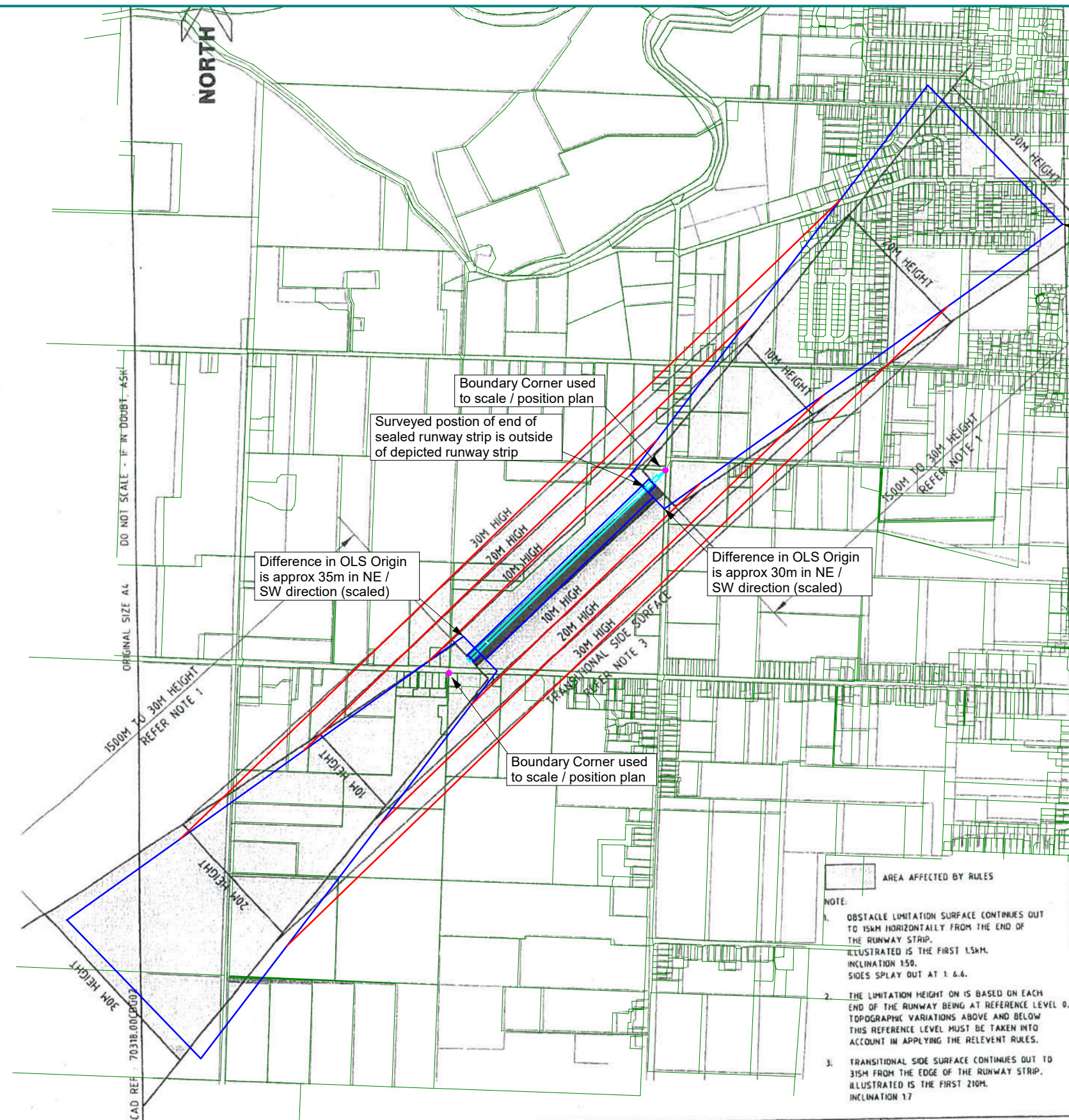
Horizontal Coordinate Datum:  
 New Zealand Geodetic Datum 2000 (Nelson Circuit)

**NEWTON SURVEY**  
 Your Land Solution Specialists  
 331 High Street, Motueka 7120  
 03 528 1015  
 ben@newtonsurvey.co.nz

**Motueka Aerodrome  
 Assessment of proposed  
 revised TRMP Schedule 16.11A**  
 Overlay:  
 Proposed Revised Schedule 16.11A  
 (Working Plot) dated 13/07/22

Drawn:	Ben Smith
Scale:	1:15000 (A3)
Job Number:	T2674
Drawing Number:	T05

Revision: 0	25/07/2022
-------------	------------



Orientation of proposed revised OLS has been rotated to align with physical runway alignment

**NOTES**

This plan has been prepared to compare different versions of Schedule 16.11A of the Tasman Resource Management Plan which defines the obstacle limitation surface associated with the Motueka Aerodrome.

- Property boundaries have been sourced from LINZ Data Service on 25 July 2022 (shown green).

- Physical location of sealed runway infrastructure (as surveyed) and is shown Cyan

- Proposed revised Obstacle Limitation Surface has been derived by scaling plan titled "Tasman District Council, Motueka Aerodrome, Schedule 16.11A Airport Height Controls, (Working Plot - dated 13.07.22) - as provided by Phil Doole. Digitised linework is shown Blue and Red hereon

- Property boundaries have been used to scale and position underlying plan

- Reference points used to scale diagram are as shown magenta hereon (underlying plan contains significant distortion)

- Underlying plan noted "Do Not Scale" has been scaled for the purpose of this exercise.

Horizontal Coordinate Datum:  
New Zealand Geodetic Datum 2000 (Nelson Circuit)

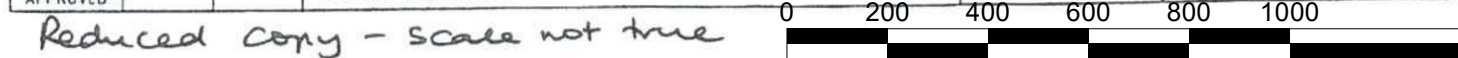
**NEWTON SURVEY**  
Your Land Solution Specialists  
331 High Street, Motueka 7120  
03 528 1015  
ben@newtonsurvey.co.nz

**Motueka Aerodrome  
Assessment of proposed  
revised TRMP Schedule 16.11A**  
Overlay:  
Schedule 16.11A (TRMP)  
plan dated January 1999

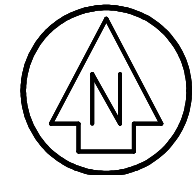
Drawn:	Ben Smith
Scale:	1:15000 (A3)
Job Number:	T2674
Drawing Number:	T06

Revision: 0                      25/07/2022

SCALES : 1:15000 DESIGNED DRAWN J.P. 1/99 CHECKED APPROVED			TASMAN DISTRICT COUNCIL MOTUEKA AERODROME SCHEDULE 16.11A AIRPORT HEIGHT CONTROLS			MONTGOMERY WATSON Status Stamp Date Stamp Job No. 70318.00    Sheet No. G02    Rev. A		
--	--	--	---	--	--	--	--	--



2000



**NOTES**

- This plan has been prepared to compare different versions of Schedule 16.11A of the Tasman Resource Management Plan which defines the obstacle limitation surface associated with the Motueka Aerodrome.
  - Property boundaries have been sourced from LINZ Data Service on 25 July 2022 (shown green).
  - Physical location of sealed runway infrastructure (as surveyed) and is shown cyan
  - Proposed revised Obstacle Limitation Surface has been derived by scaling plan titled "Tasman District Council, Motueka Aerodrome, Schedule 16.11A Airport Height Controls, (Working Plot - dated 13.07.22) - as provided by Phil Doole. Digitised linework is shown Blue and Red hereon
  - Property boundaries have been used to scale and position supplied plans.
  - Reference points used to scale diagram are as shown magenta hereon (underlying plan contains significant distortion)
  - Underlying plan noted "Do Not Scale" has been scaled for the purpose of this exercise.
- Horizontal Coordinate Datum:  
New Zealand Geodetic Datum 2000 (Nelson Circuit)

**NEWTON SURVEY**  
Your Land Solution Specialists  
331 High Street, Motueka 7120  
03 528 1015  
ben@newtonsurvey.co.nz

**Motueka Aerodrome  
Assessment of proposed  
revised TRMP Schedule 16.11A**  
Overlay:  
Schedule 16.11A (TRMP)  
Current Diagram as at July 2022

Drawn:	Ben Smith
Scale:	1:15000 (A3)
Job Number:	T2674
Drawing Number:	T07

Revision: 0                      25/07/2022

Notes: