

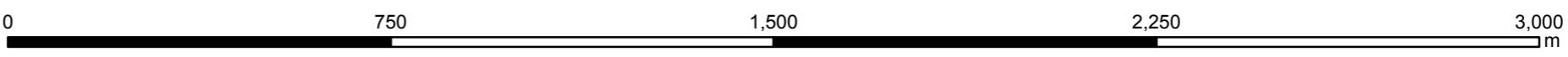
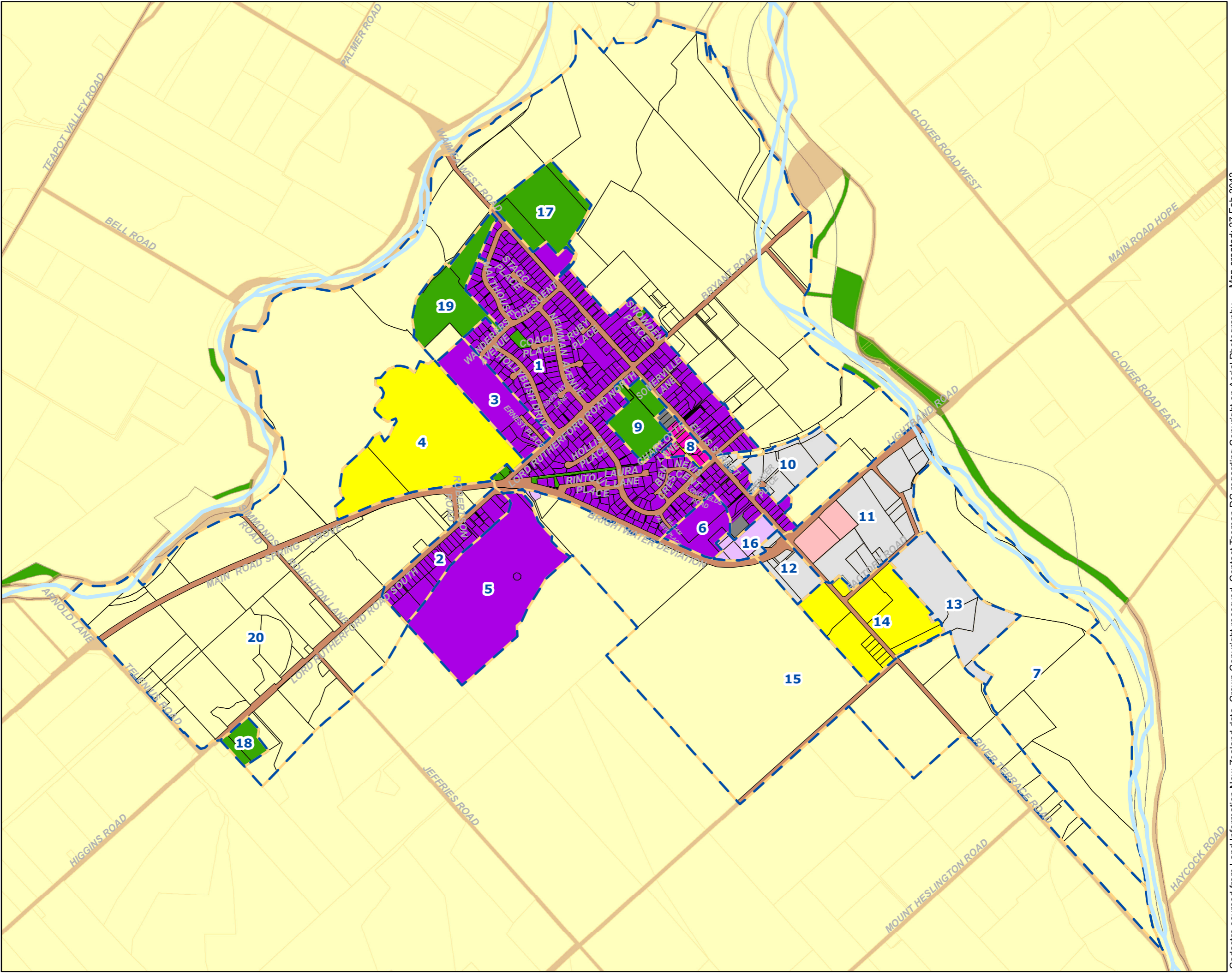
Scale: 1:12,500



Growth Model 2011 BRIGHTWATER

- Legend**
- Rivers
 - Lake/Sea
 - Parcel
 - Development Area Boundaries
 - Road
 - Green Space
- Growth**
- Residential
 - Rural Residential
 - Commercial/Tourism
 - Industrial
 - Rural
- No Growth**
- Residential
 - Rural Residential
 - Commercial/Tourism
 - Industrial
 - Rural

NOTE
Growth areas is land that is expected to provide for future growth between 2011 and 2031. The numbers refer to the areas in the settlement that will potentially provide future growth.



Cadastral sourced from Land Information New Zealand data. Crown Copyright reserved. Contact Tasman DC regarding Copyright on Aerial Photography. Map created: 27 Feb 2012. The information on this map is prepared for indicative use only and is not intended for definitive legal, location or formal reference purposes.