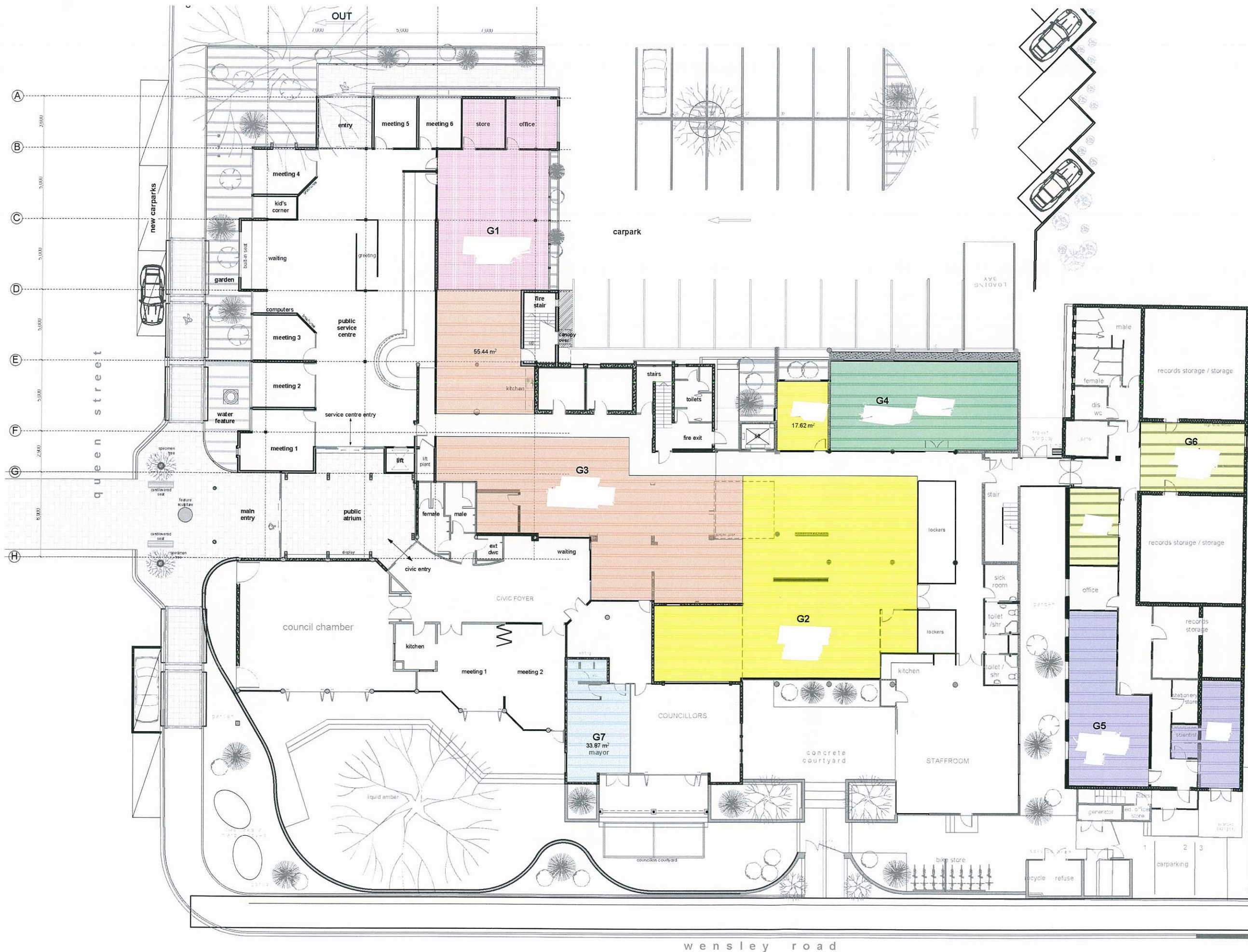




Perspective 7





**general notes:**  
 do not scale from drawings, confirm all dimensions on site, confirm any discrepancies with the architect prior to construction.  
 wind region - R1  
 wind zone - medium  
 earthquake zone - A  
 corrosion zone - 1

**key:**

	<b>G1</b> 102 m <sup>2</sup>
	<b>G2</b> 222 m <sup>2</sup>
	<b>G3</b> 223 m <sup>2</sup>
	<b>G4</b> 83 m <sup>2</sup>
	<b>G5</b> 83 m <sup>2</sup>
	<b>G6</b> 55 m <sup>2</sup>
	<b>G7</b> 34 m <sup>2</sup>

revision	date	notes

8c Nile Street West, Nelson  
 tel: 03 548 8461  
 fax: 03 548 8465  
 www.redboxarchitects.co.nz

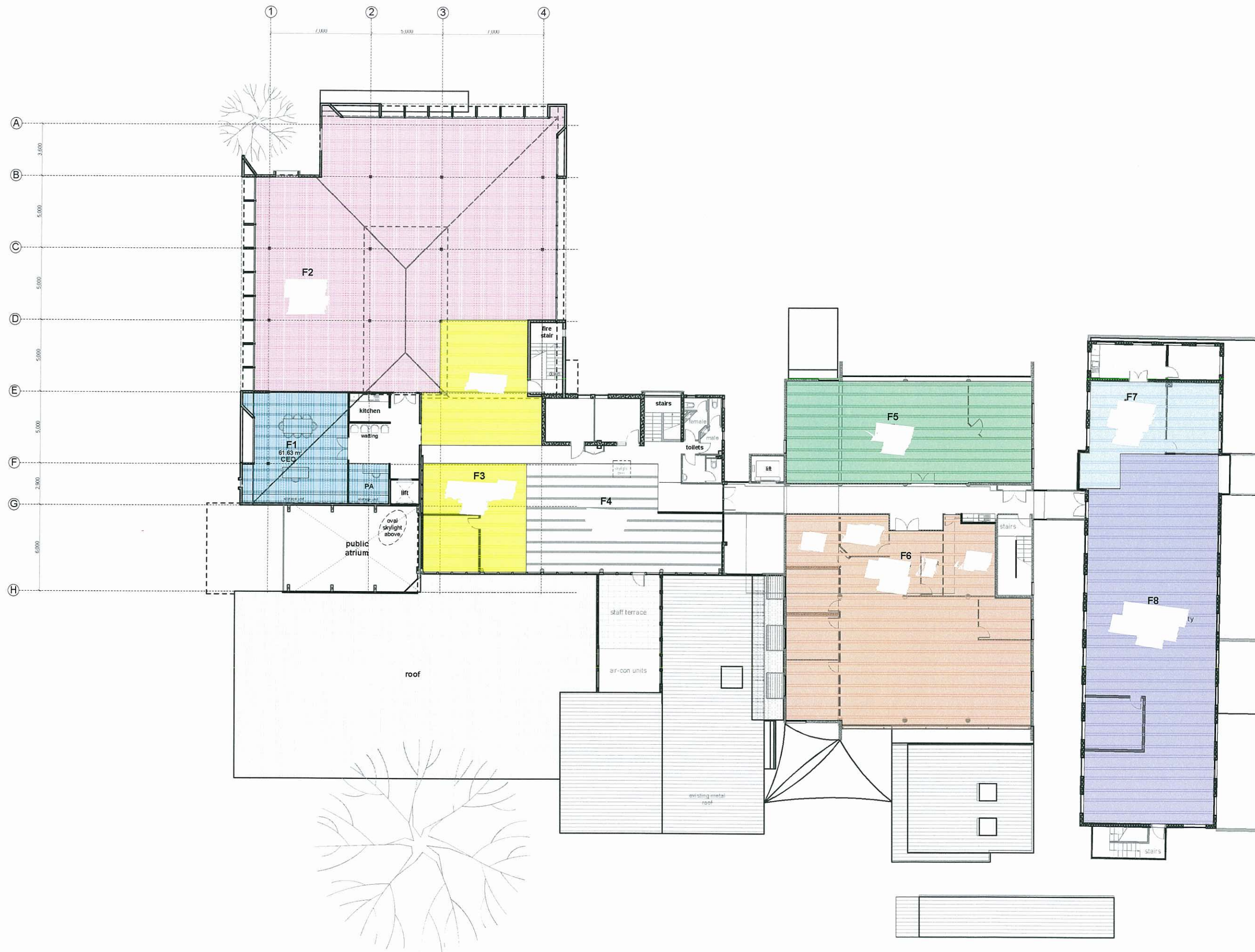
**Tasman District Council  
 Office Upgrade**

Queen Street  
 Richmond  
 job: 08-60  
 Jan 2011

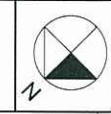
**Proposed Ground Floor Plan**

Scale **1:250 @ A3**  
 Drawing Number **DD 101**





**general notes:**  
 do not scale from drawings, confirm all dimensions on site, confirm any discrepancies with the architect prior to construction.  
 wind region - R1  
 wind zone - medium  
 earthquake zone - A  
 corrosion zone - 1



**key:**

	F1 62 m²
	F2 341 m²
	F3 116 m²
	F4 88 m²
	F5 121 m²
	F6 231 m²
	F7 51 m²
	F8 225 m²

revision	date	notes
----------	------	-------



8c Nile Street West, Nelson  
 tel: 03 548 8461  
 fax: 03 548 8465  
 www.redboxarchitects.co.nz

**Tasman District Council  
 Office Upgrade**

Queen Street  
 Richmond

job: 08-60  
 Jan 2011

**Proposed First Floor Plan**

Scale **1:250** @ A3

Drawing Number **DD 102**