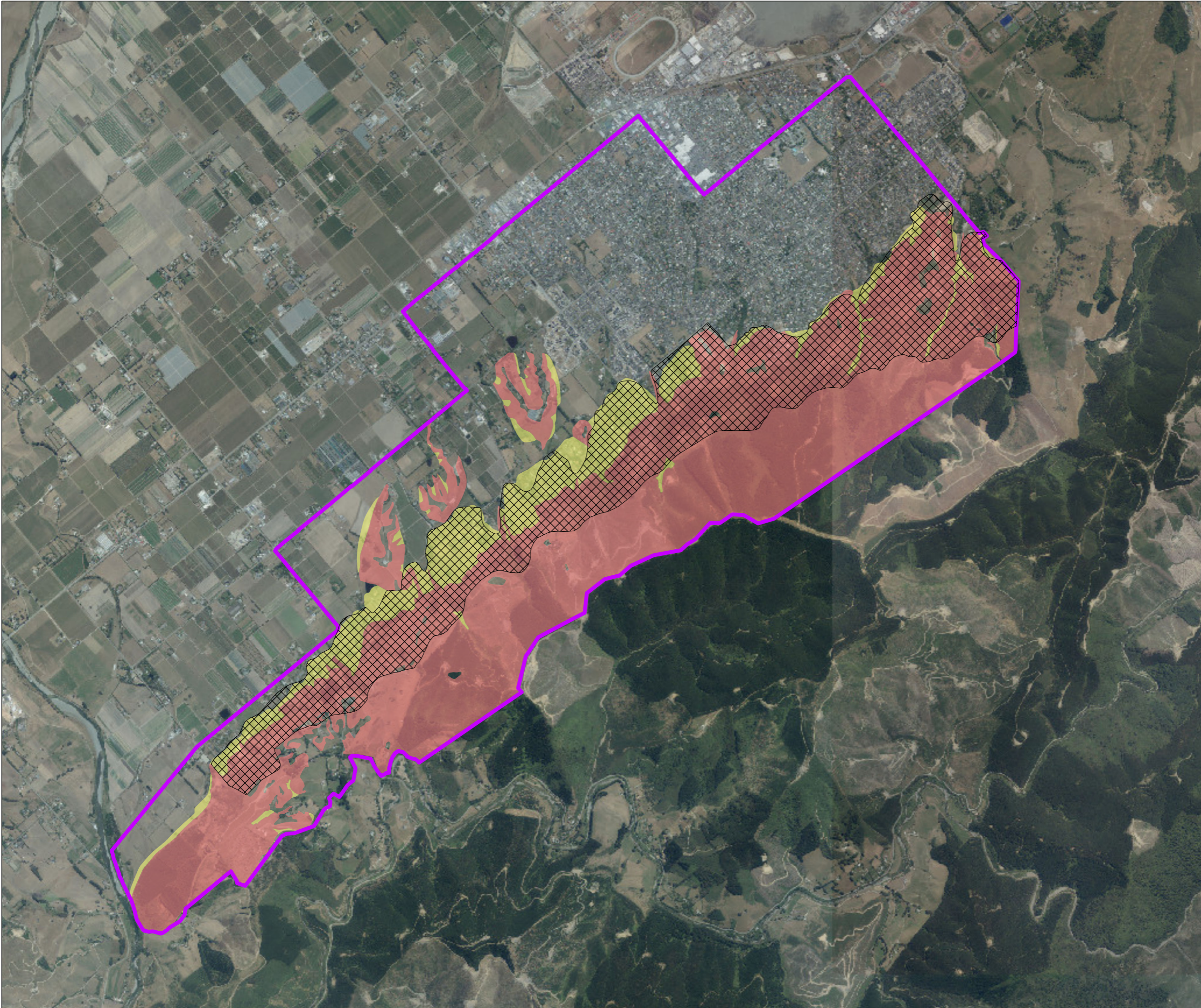


Richmond Foothills Maps

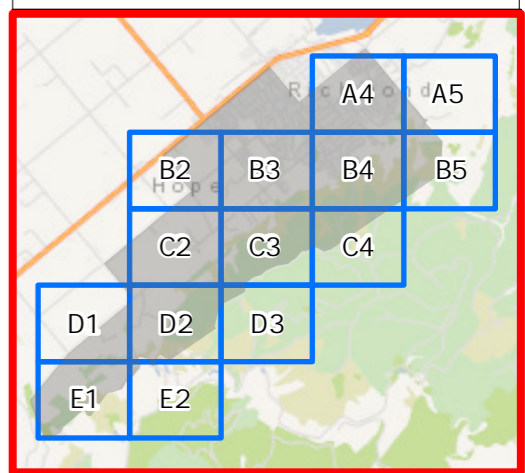


Legend

- Study Areas
- Existing TRMP SIRA Overlay

Slope Instability Susceptibility Areas

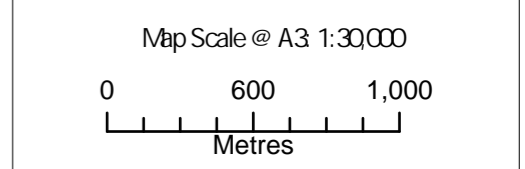
- Areas potentially susceptible to slope instability
- Areas potentially susceptible to debris run out



This map contains data derived in part or wholly from sources other than Beca and therefore, no representations or warranties are made by Beca as to the accuracy or completeness of this information.
 Map intended for distribution as a PDF document
 Scale may be incorrect when printed.

Contains information sourced from LINZ. Crown Copyright Reserved.
 Contains Data sourced from Tasman District Council.

Aerials Sourced from the LINZ Data Service and licensed for re-use under the Creative Commons Attribution 4.0 New Zealand licence, Land Information New Zealand, Eagle Technology

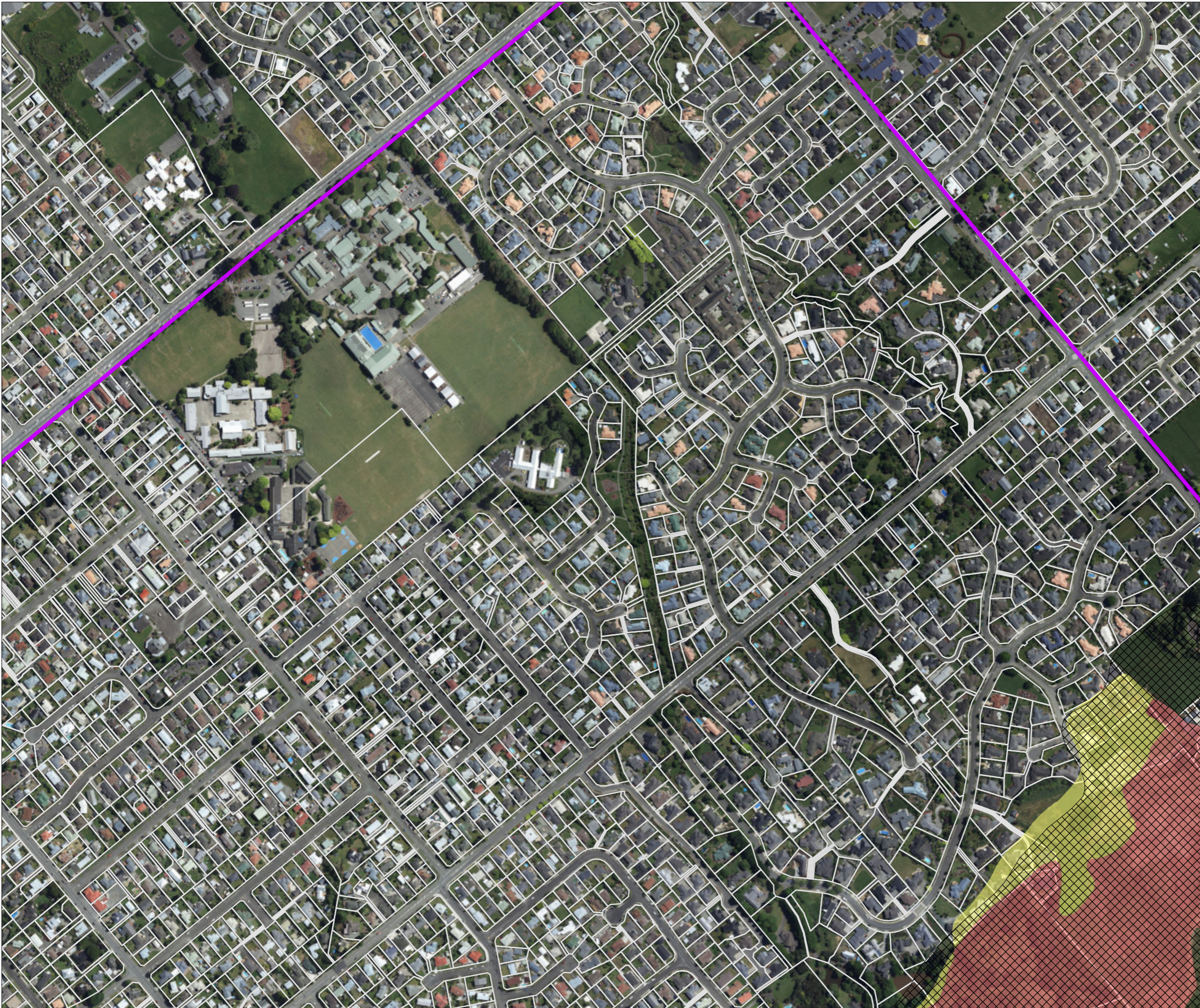


Revision	Author	Verified	Approved	Date
2	BDJ2	RR	DC	28/05/2021
1	BDJ2	DRAFT	DRAFT	09/04/2021



Client Tasman District Council	Discipline: GIS
Project TDC Slope Instability Mapping	Drawing No: GIS-3160084-01a-Overview





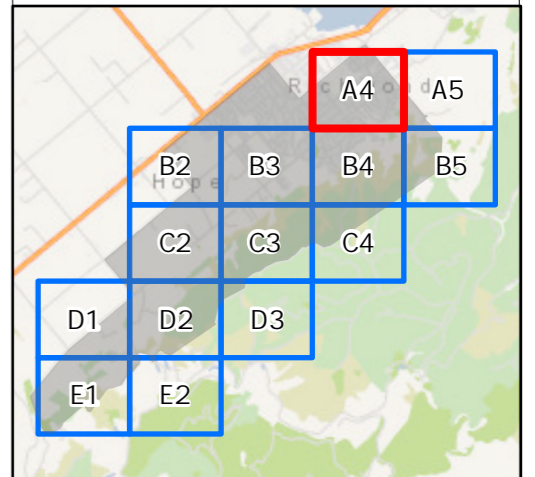
Richmond Slope Instability Susceptibility Area

Map: A4

Page 2 of 15

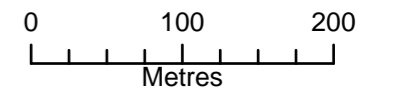
Legend

- Study Areas
- NZ Property Titles
- Existing TRMP SIRA Overlay
- Slope Instability Susceptibility Areas**
- Areas potentially susceptible to slope instability
- Areas potentially susceptible to debris run out



This map contains data derived in part or wholly from sources other than Beca, and therefore, no representations or warranties are made by Beca as to the accuracy or completeness of this information.
 Map intended for distribution as a PDF document
 Scale may be incorrect when printed.
 Contains information sourced from LINZ. Crown Copyright Reserved.
 Contains Data sourced from Tasman District Council.
 Aerials Sourced from the LINZ Data Service and licensed for re-use under the Creative Commons Attribution 4.0 New Zealand licence, Land Information New Zealand, Eagle Technology

Map Scale @ A3 1:5000



Revision	Author	Verified	Approved	Date
2	BDJ2	RR	DC	29/05/2021
1	BDJ2	DRAFT	DRAFT	09/04/2021



Client Tasman District Council	Discipline GIS
Project TDC Slope Instability Mapping	Drawing No. GIS-3160084-01a-A4





Richmond Slope Instability Susceptibility Area

Map: A5 Page 3 of 15

Legend

- Study Areas
- NZ Property Titles
- Existing TRMP SIRA Overlay

Slope Instability Susceptibility Areas

- Areas potentially susceptible to slope instability
- Areas potentially susceptible to debris run out

This map contains data derived in part or wholly from sources other than Beca, and therefore, no representations or warranties are made by Beca as to the accuracy or completeness of this information.
 Map intended for distribution as a PDF document
 Scale may be incorrect when printed.
 Contains information sourced from LINZ. Crown Copyright Reserved.
 Contains Data sourced from Tasman District Council.
 Aerials Sourced from the LINZ Data Service and licensed for re-use under the Creative Commons Attribution 4.0 New Zealand licence, Land Information New Zealand, Eagle Technology

Map Scale @ A3 1:5000

0 100 200
Metres

Revision	Author	Verified	Approved	Date
2	BDJ2	RR	DC	28/05/2021
1	BDJ2	DRAFT	DRAFT	09/04/2021

Client Tasman District Council	Discipline: GIS
Project TDC Slope Instability Mapping	Drawing No. GIS-3160084-01a-A5

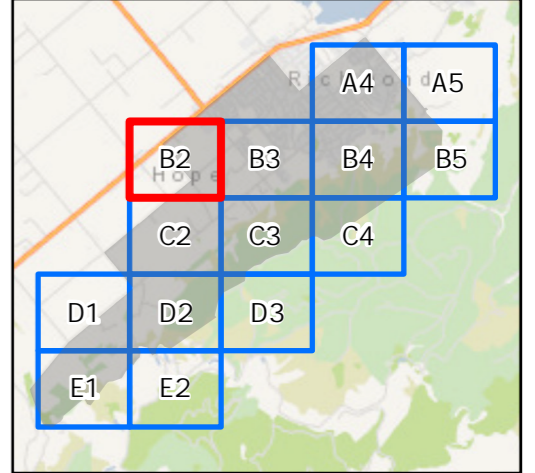


Richmond Slope Instability Susceptibility Area

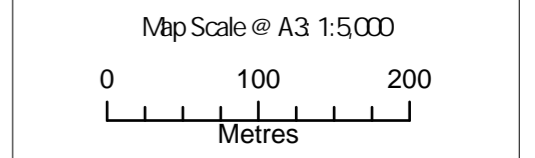
Map: B2 | Page 4 of 15

Legend

- Study Areas
- NZ Property Titles
- Existing TRMP SIRA Overlay
- Slope Instability Susceptibility Areas**
- Areas potentially susceptible to slope instability
- Areas potentially susceptible to debris run out



This map contains data derived in part or wholly from sources other than Beca, and therefore, no representations or warranties are made by Beca as to the accuracy or completeness of this information.
 Map intended for distribution as a PDF document
 Scale may be incorrect when printed.
 Contains information sourced from LINZ, Crown Copyright Reserved.
 Contains Data sourced from Tasman District Council.
 Aerials Sourced from the LINZ Data Service and licensed for re-use under the Creative Commons Attribution 4.0 New Zealand licence, Land Information New Zealand, Eagle Technology



Revision	Author	Verified	Approved	Date
2	BDJ2	RR	DC	28/05/2021
1	BDJ2	DRAFT	DRAFT	09/04/2021



Client Tasman District Council	Discipline GIS
Project TDC Slope Instability Mapping	Drawing No. GIS-3160084-01a-B2



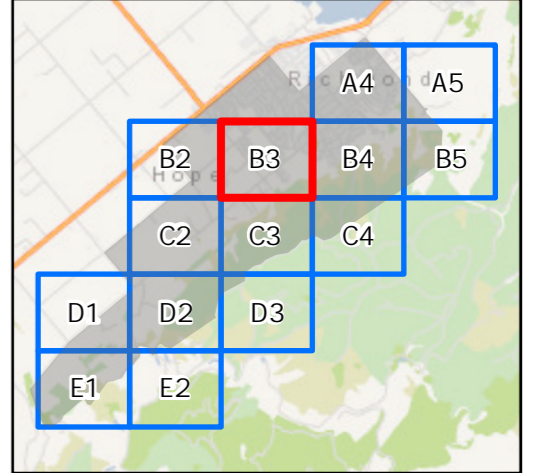


Richmond Slope Instability Susceptibility Area

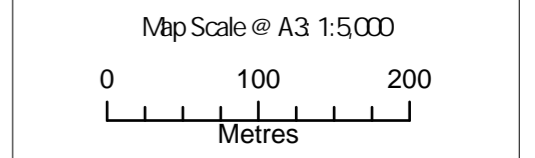
Map: B3 | Page 5 of 15

Legend

- Study Areas
- NZ Property Titles
- Existing TRMP SIRA Overlay
- Slope Instability Susceptibility Areas**
- Areas potentially susceptible to slope instability
- Areas potentially susceptible to debris run out

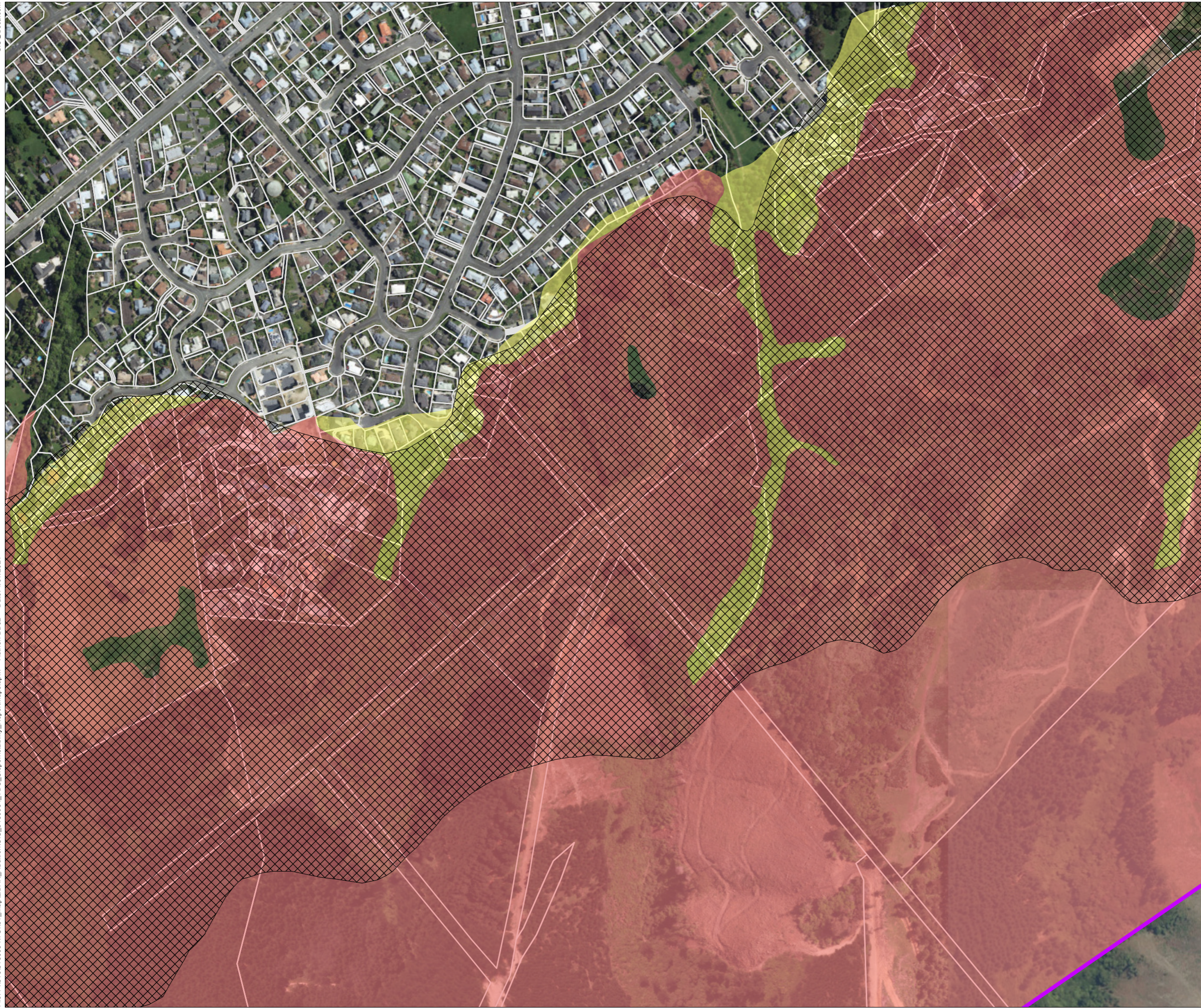


This map contains data derived in part or wholly from sources other than Beca, and therefore, no representations or warranties are made by Beca as to the accuracy or completeness of this information.
 Map intended for distribution as a PDF document
 Scale may be incorrect when printed.
 Contains information sourced from LINZ, Crown Copyright Reserved.
 Contains Data sourced from Tasman District Council.
 Aerials Sourced from the LINZ Data Service and licensed for re-use under the Creative Commons Attribution 4.0 New Zealand licence, Land Information New Zealand, Eagle Technology



Revision	Author	Verified	Approved	Date		
2	BDJ2	RR	DC	28/05/2021		
1	BDJ2	DRAFT	DRAFT	09/04/2021		
Client				Discipline:		
Tasman District Council				GIS		
Project				Drawing No:		
TDC Slope Instability Mapping				GIS-3160084-01a-B3		








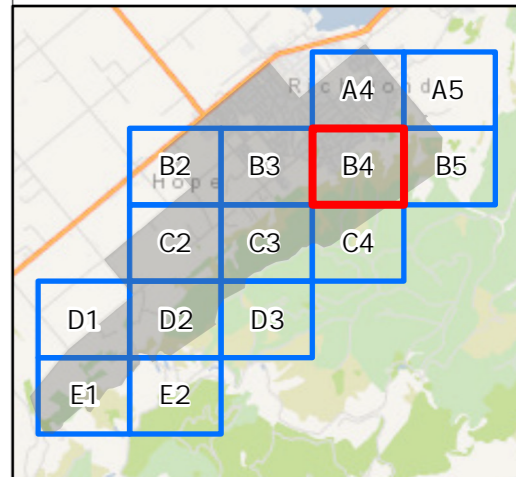


Richmond Slope Instability Susceptibility Area

Map: B4 | Page 6 of 15

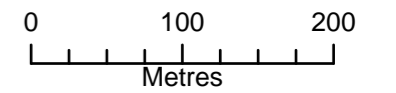
Legend

-  Study Areas
-  NZ Property Titles
-  Existing TRMP SIRA Overlay
- Slope Instability Susceptibility Areas**
-  Areas potentially susceptible to slope instability
-  Areas potentially susceptible to debris run out



This map contains data derived in part or wholly from sources other than Beca, and therefore, no representations or warranties are made by Beca as to the accuracy or completeness of this information.
 Map intended for distribution as a PDF document.
 Scale may be incorrect when printed.
 Contains information sourced from LINZ. Crown Copyright Reserved.
 Contains Data sourced from Tasman District Council.
 Aerials Sourced from the LINZ Data Service and licensed for re-use under the Creative Commons Attribution 4.0 New Zealand licence, Land Information New Zealand, Eagle Technology

Map Scale @ A3 1:5000

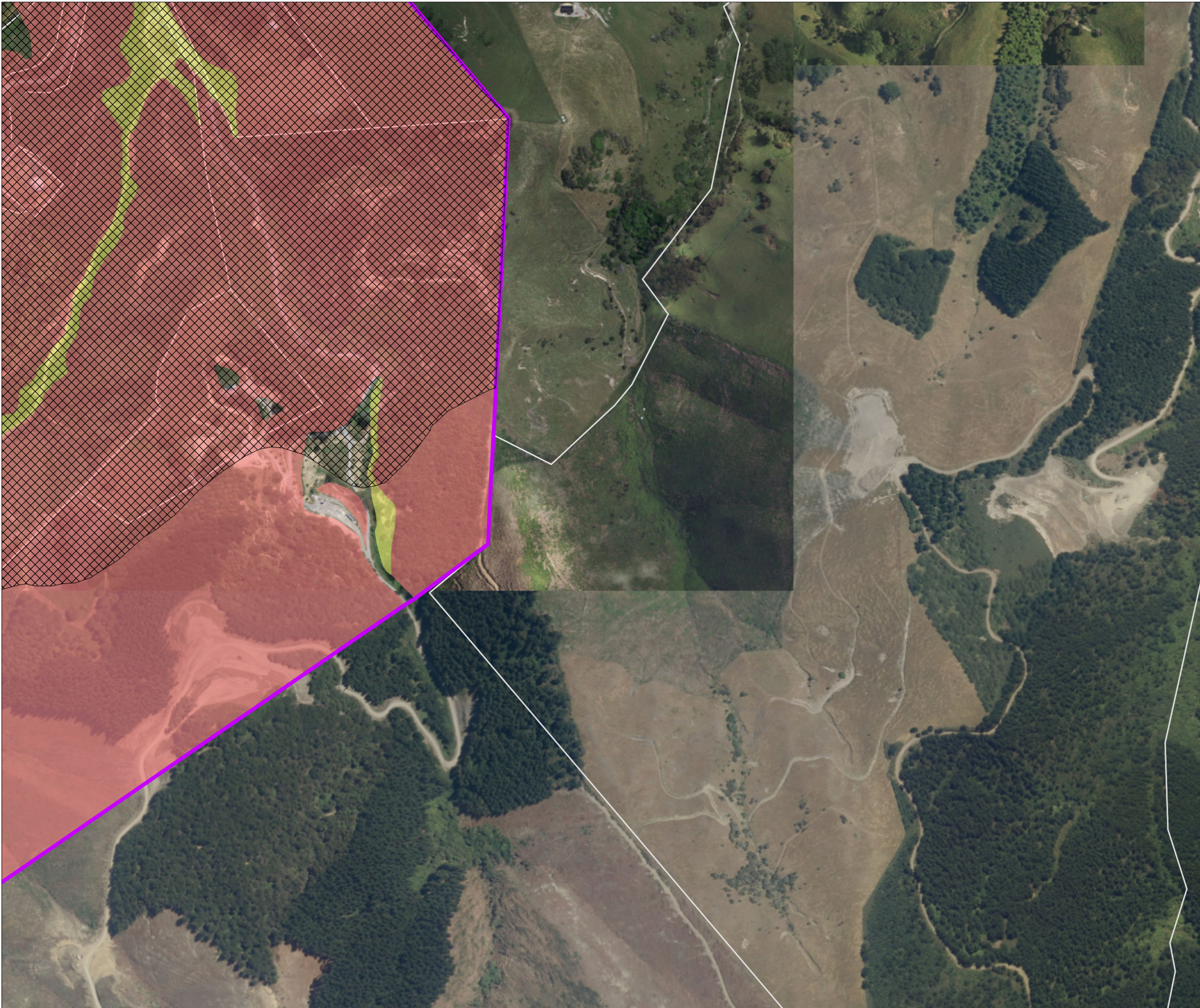


Revision	Author	Verified	Approved	Date
2	BDJ2	RR	DC	28/05/2021
1	BDJ2	DRAFT	DRAFT	09/04/2021



Client Tasman District Council	Discipline GIS
Project TDC Slope Instability Mapping	Drawing No. GIS-3160084-01a-B4

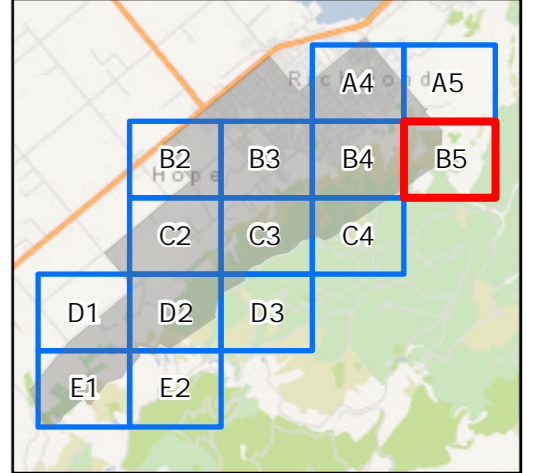




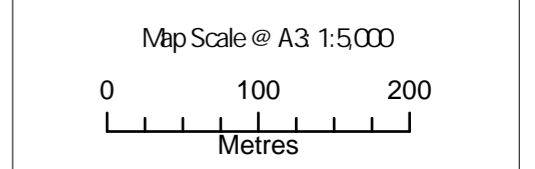
Richmond Slope Instability Susceptibility Area

Legend

- Study Areas
- NZ Property Titles
- Existing TRMP SIRA Overlay
- Slope Instability Susceptibility Areas**
- Areas potentially susceptible to slope instability
- Areas potentially susceptible to debris run out



This map contains data derived in part or wholly from sources other than Beca, and therefore, no representations or warranties are made by Beca as to the accuracy or completeness of this information.
 Map intended for distribution as a PDF document
 Scale may be incorrect when printed.
 Contains information sourced from LINZ, Crown Copyright Reserved.
 Contains Data sourced from Tasman District Council.
 Aerials Sourced from the LINZ Data Service and licensed for re-use under the Creative Commons Attribution 4.0 New Zealand licence, Land Information New Zealand, Eagle Technology



Revision	Author	Verified	Approved	Date
2	BDJ2	RR	DC	28/05/2021
1	BDJ2	DRAFT	DRAFT	09/04/2021



Client Tasman District Council	Discipline: GIS
Project TDC Slope Instability Mapping	Drawing No: GIS-3160084-01a-B5

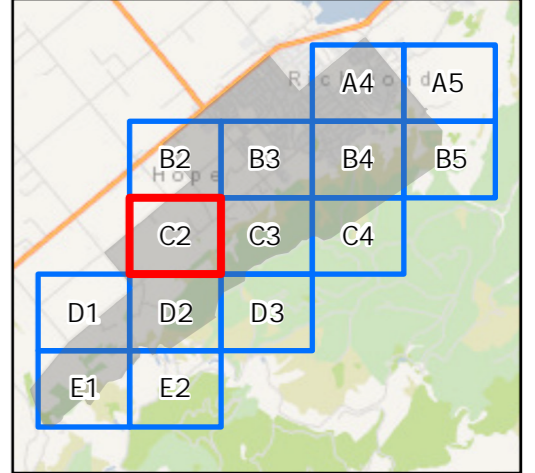




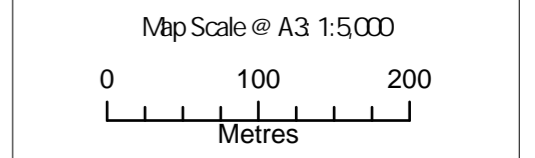
Richmond Slope Instability Susceptibility Area

Legend

- Study Areas
- NZ Property Titles
- Existing TRMP SIRA Overlay
- Slope Instability Susceptibility Areas**
- Areas potentially susceptible to slope instability
- Areas potentially susceptible to debris run out



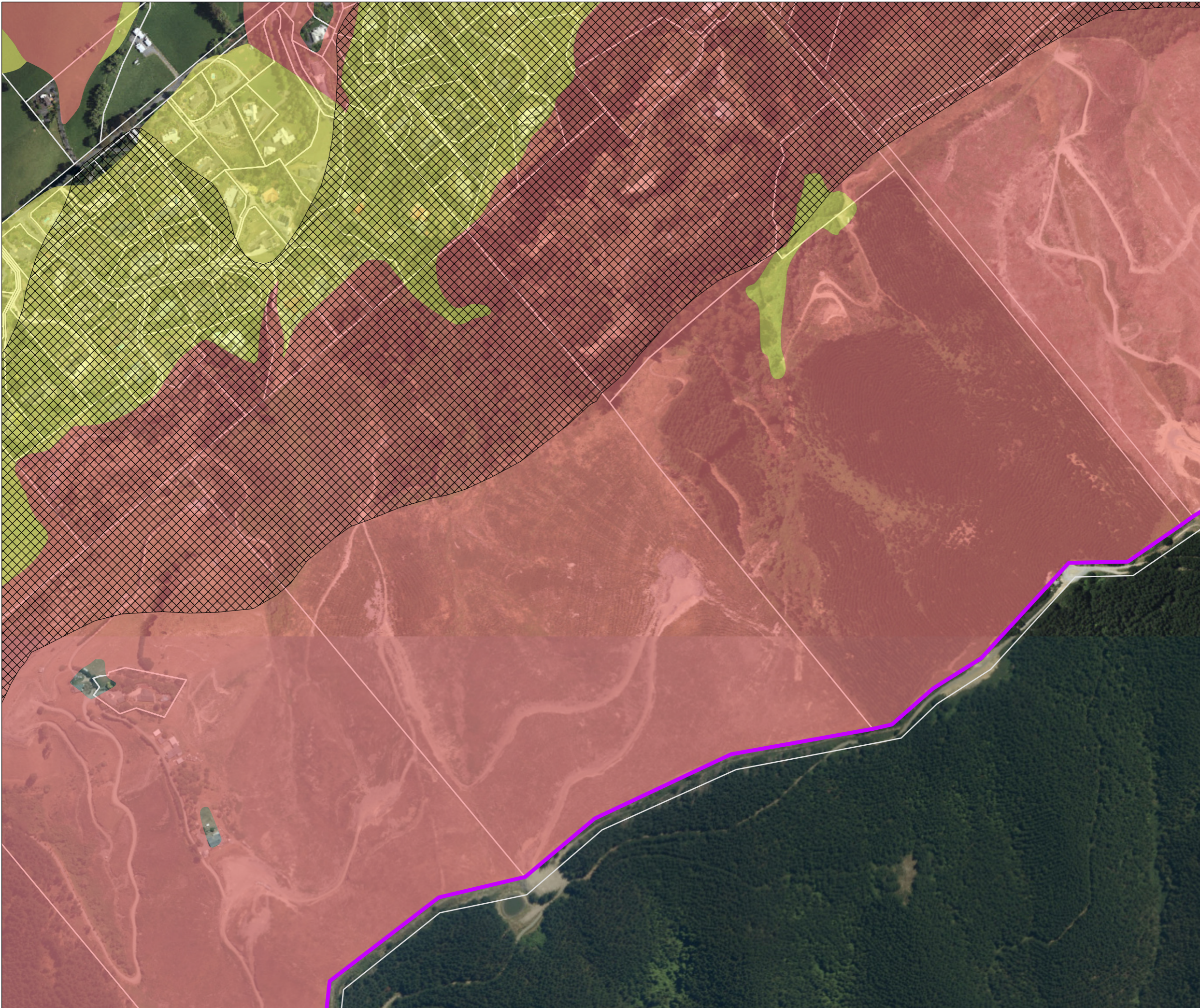
This map contains data derived in part or wholly from sources other than Beca, and therefore, no representations or warranties are made by Beca as to the accuracy or completeness of this information.
 Map intended for distribution as a PDF document
 Scale may be incorrect when printed.
 Contains information sourced from LINZ. Crown Copyright Reserved.
 Contains Data sourced from Tasman District Council.
 Aerials Sourced from the LINZ Data Service and licensed for re-use under the Creative Commons Attribution 4.0 New Zealand licence, Land Information New Zealand, Eagle Technology



Revision	Author	Verified	Approved	Date
2	BDJ2	RR	DC	28/05/2021
1	BDJ2	DRAFT	DRAFT	09/04/2021

Client	Tasman District Council	Discipline:	GIS
Project	TDC Slope Instability Mapping	Drawing No:	GIS-3160084-01a-C2





Richmond Slope Instability Susceptibility Area

Map: C3 Page 9 of 15

Legend

- Study Areas
- NZ Property Titles
- Existing TRMP SIRA Overlay

Slope Instability Susceptibility Areas

- Areas potentially susceptible to slope instability
- Areas potentially susceptible to debris run out

This map contains data derived in part or wholly from sources other than Beca, and therefore, no representations or warranties are made by Beca as to the accuracy or completeness of this information.
Map intended for distribution as a PDF document.
Scale may be incorrect when printed.
Contains information sourced from LINZ. Crown Copyright Reserved.
Contains Data sourced from Tasman District Council.
Aerials Sourced from the LINZ Data Service and licensed for re-use under the Creative Commons Attribution 4.0 New Zealand licence, Land Information New Zealand, Eagle Technology.

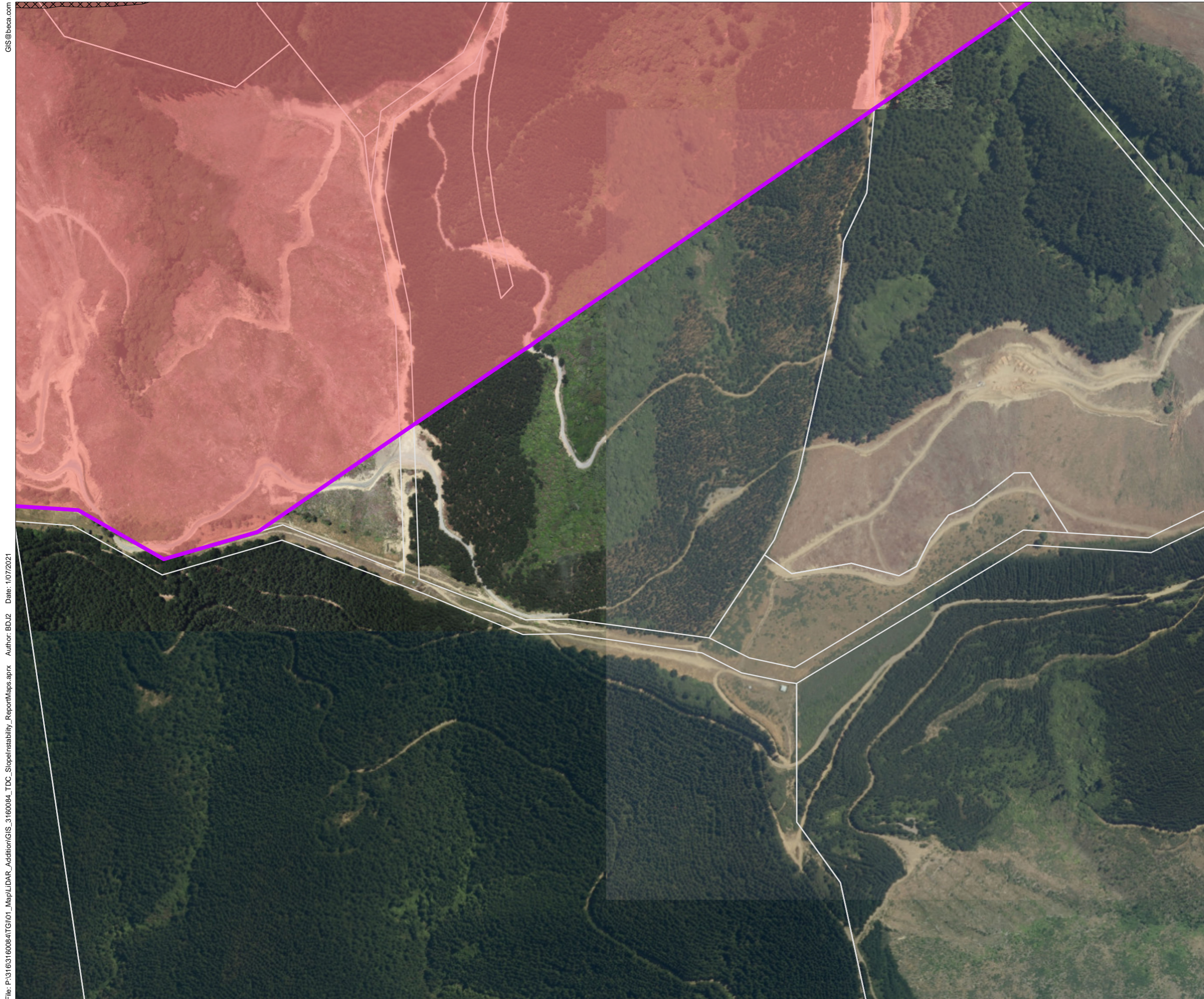
Map Scale @ A3 1:5000

0 100 200

Metres

Revision	Author	Verified	Approved	Date
2	BDJ2	RR	DC	28/05/2021
1	BDJ2	DRAFT	DRAFT	09/04/2021

Client: Tasman District Council	Discipline: GIS
Project: TDC Slope Instability Mapping	Drawing No: GIS-3160084-01a-C3



GIS@beca.com

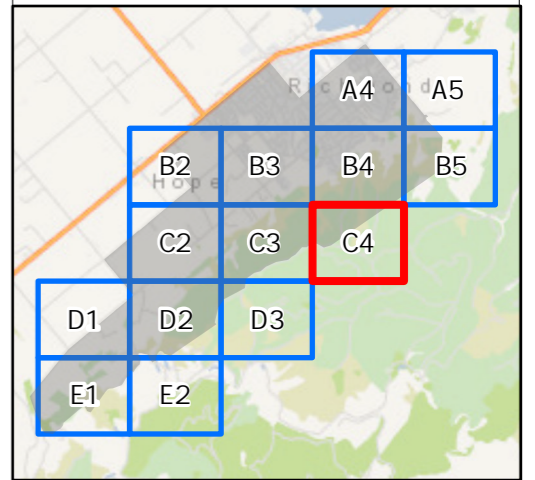
File: P:\3160084\GIS_3160084_TDC_SlopeInstability_Report\Map.aprx Author: BDJ2 Date: 1/07/2021

Richmond Slope Instability Susceptibility Area

Map: C4 Page 10 of 15

Legend

- Study Areas
 - NZ Property Titles
 - Existing TRMP SIRA Overlay
- Slope Instability Susceptibility Areas**
- Areas potentially susceptible to slope instability
 - Areas potentially susceptible to debris run out

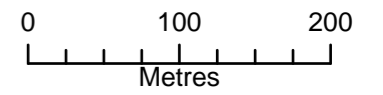


This map contains data derived in part or wholly from sources other than Beca, and therefore, no representations or warranties are made by Beca as to the accuracy or completeness of this information.
Map intended for distribution as a PDF document.
Scale may be incorrect when printed.

Contains information sourced from LINZ, Crown Copyright Reserved.
Contains Data sourced from Tasman District Council.

Aerials Sourced from the LINZ Data Service and licensed for re-use under the Creative Commons Attribution 4.0 New Zealand licence, Land Information New Zealand, Eagle Technology

Map Scale @ A3 1:5000

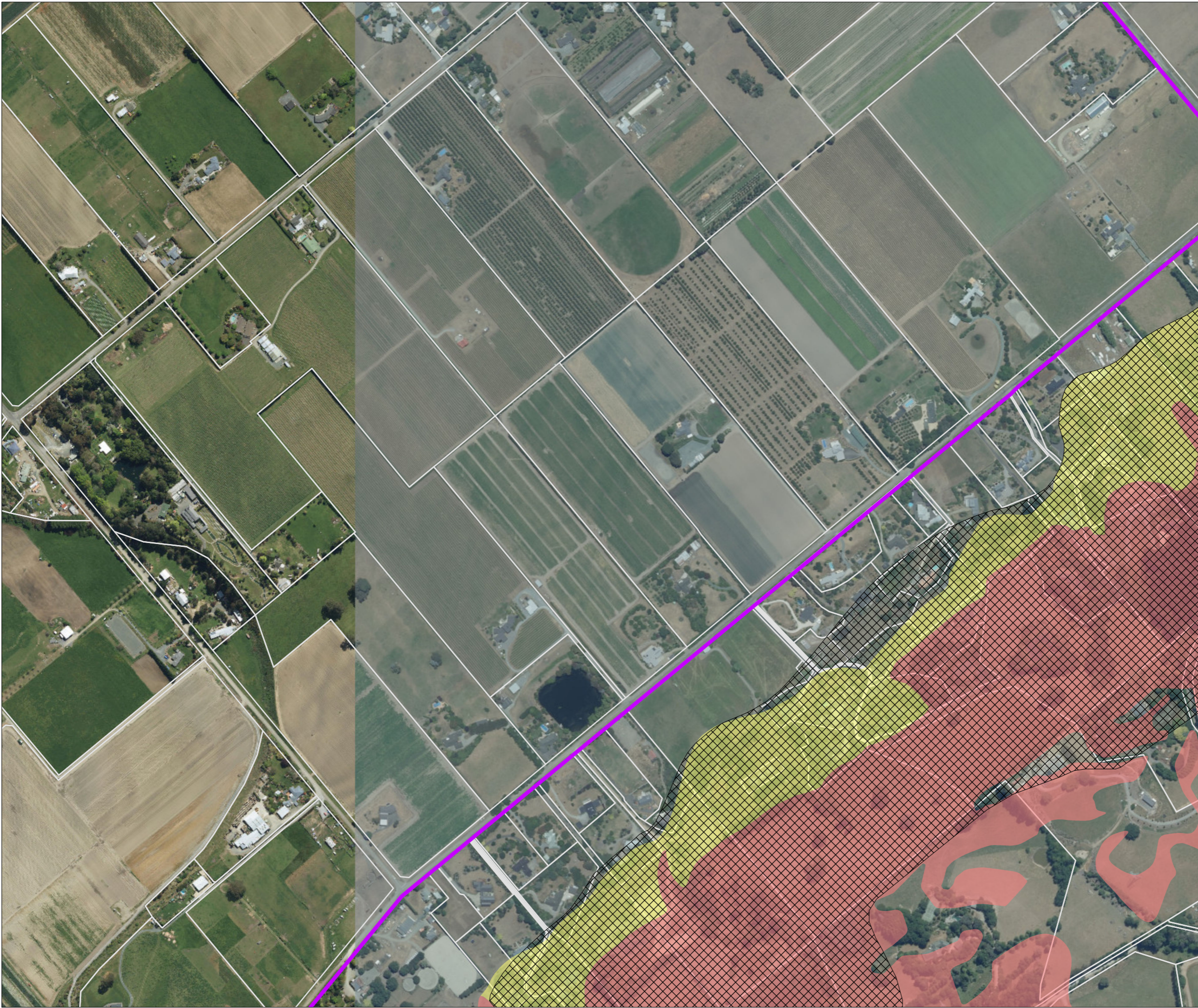


Revision	Author	Verified	Approved	Date
2	BDJ2	RR	DC	29/05/2021
1	BDJ2	DRAFT	DRAFT	09/04/2021



Client Tasman District Council	Discipline: GIS
Project TDC Slope Instability Mapping	Drawing No: GIS-3160084-01a-C4



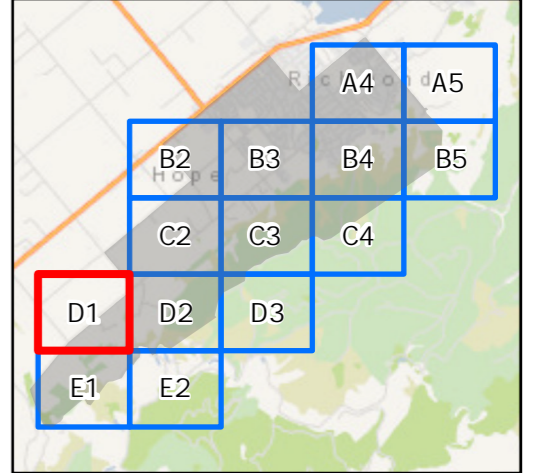


Richmond Slope Instability Susceptibility Area

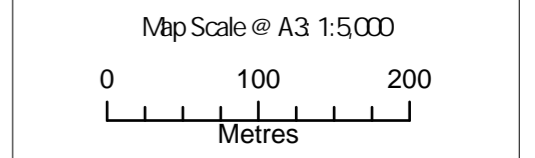
Map: D1 | Page 11 of 15

Legend

- Study Areas
- NZ Property Titles
- Existing TRMP SIRA Overlay
- Slope Instability Susceptibility Areas**
- Areas potentially susceptible to slope instability
- Areas potentially susceptible to debris run out



This map contains data derived in part or wholly from sources other than Beca, and therefore, no representations or warranties are made by Beca as to the accuracy or completeness of this information.
 Map intended for distribution as a PDF document
 Scale may be incorrect when printed.
 Contains information sourced from LINZ. Crown Copyright Reserved.
 Contains Data sourced from Tasman District Council.
 Aerials Sourced from the LINZ Data Service and licensed for re-use under the Creative Commons Attribution 4.0 New Zealand licence, Land Information New Zealand, Eagle Technology

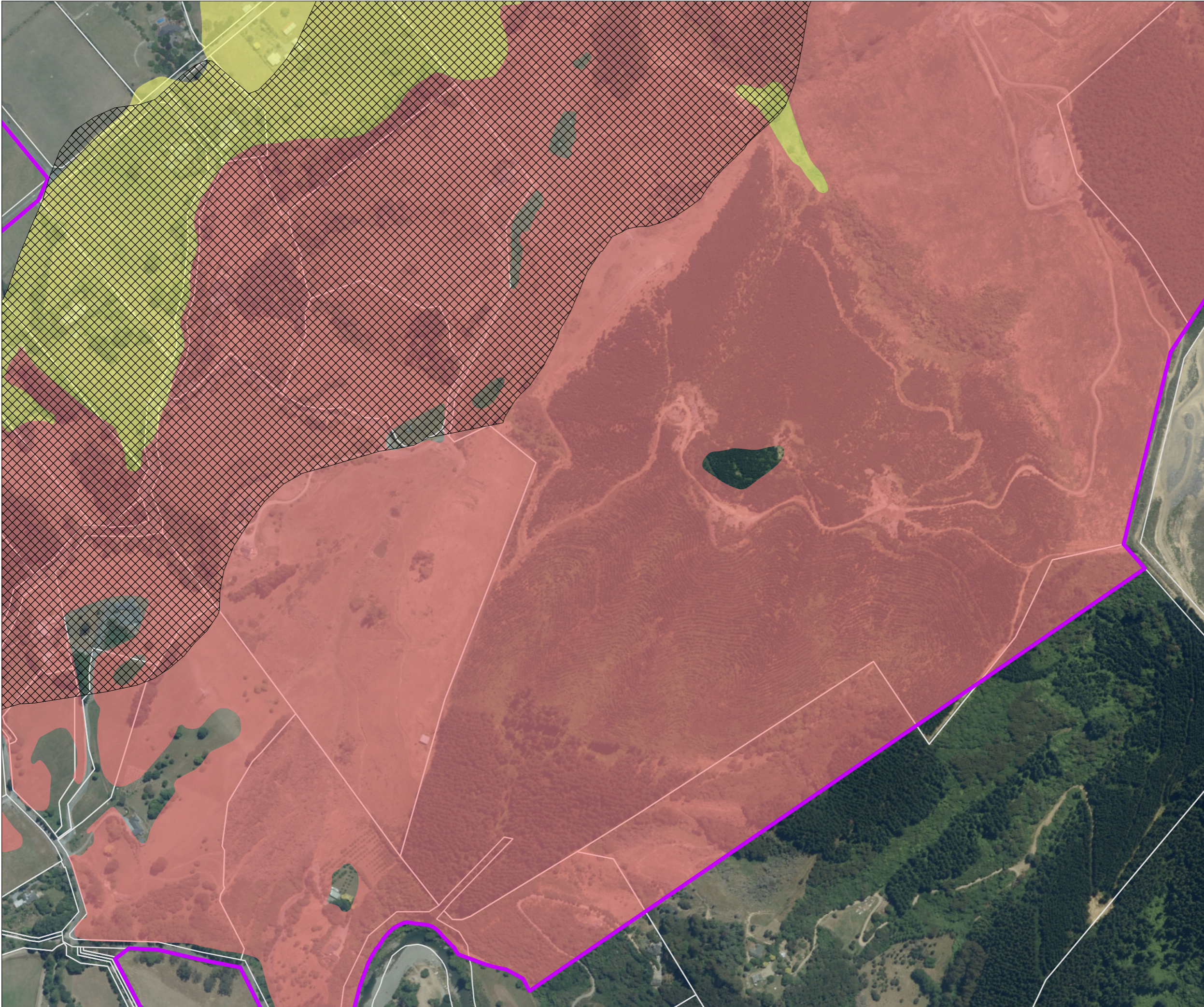


Revision	Author	Verified	Approved	Date
2	BDJ2	RR	DC	29/05/2021
1	BDJ2	DRAFT	DRAFT	09/04/2021



Client Tasman District Council	Discipline GIS
Project TDC Slope Instability Mapping	Drawing No. GIS-3160084-01a-D1





Richmond Slope Instability Susceptibility Area

Map: D2 Page 12 of 15

Legend

- Study Areas
- NZ Property Titles
- Existing TRMP SIRA Overlay

Slope Instability Susceptibility Areas

- Areas potentially susceptible to slope instability
- Areas potentially susceptible to debris run out

This map contains data derived in part or wholly from sources other than Beca, and therefore, no representations or warranties are made by Beca as to the accuracy or completeness of this information.
Map intended for distribution as a PDF document.
Scale may be incorrect when printed.

Contains information sourced from LINZ. Crown Copyright Reserved.
Contains Data sourced from Tasman District Council.

Aerials Sourced from the LINZ Data Service and licensed for re-use under the Creative Commons Attribution 4.0 New Zealand licence, Land Information New Zealand, Eagle Technology

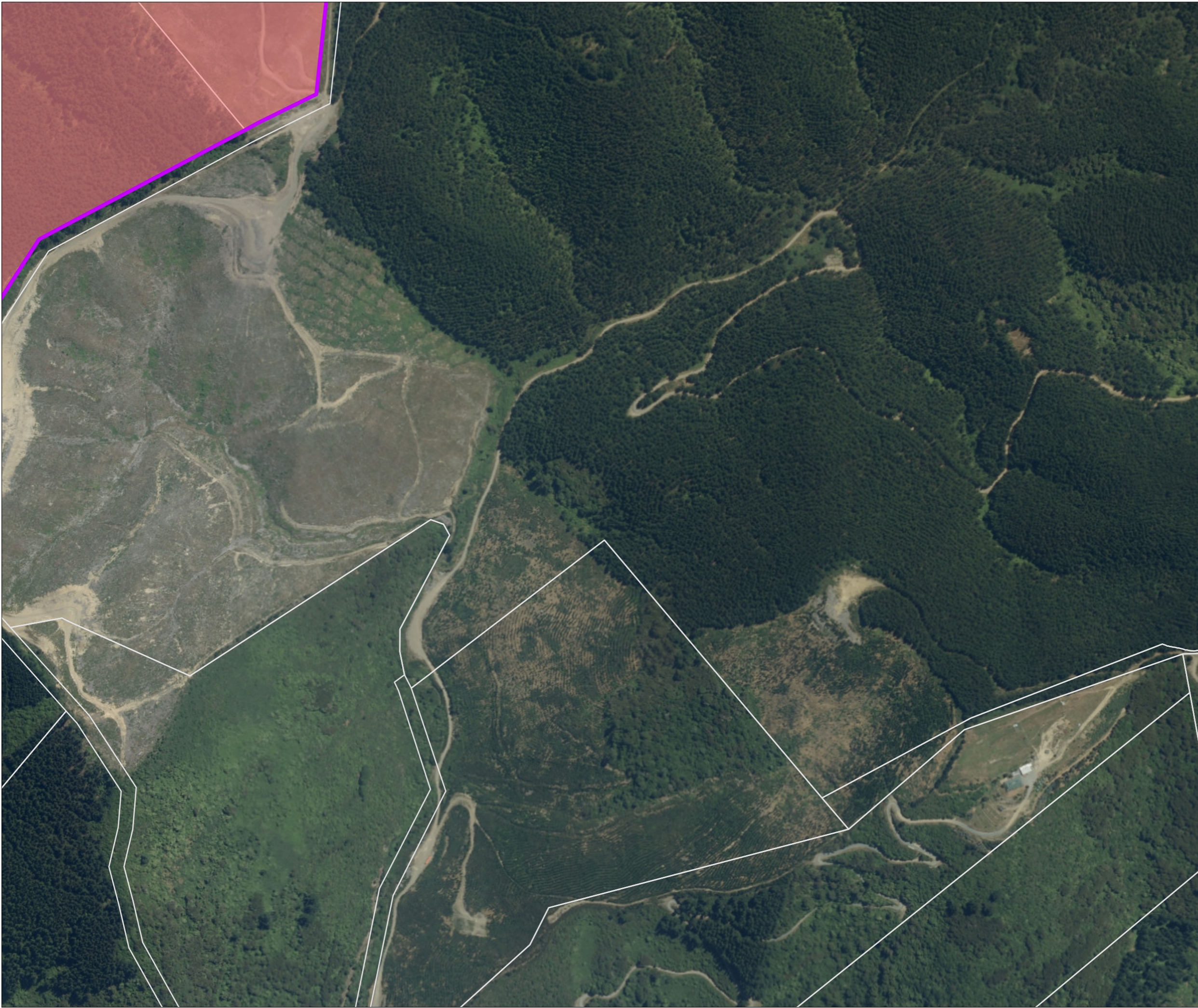
Map Scale @ A3 1:5000

0 100 200

Metres

Revision	Author	Verified	Approved	Date
2	BDJ2	RR	DC	29/05/2021
1	BDJ2	DRAFT	DRAFT	09/04/2021

Client: Tasman District Council	Discipline: GIS
Project: TDC Slope Instability Mapping	Drawing No: GIS-3160084-01a-D2



Richmond Slope Instability Susceptibility Area

Map: D3 | Page 13 of 15

Legend

- Study Areas
- NZ Property Titles
- Existing TRMP SIRA Overlay

Slope Instability Susceptibility Areas

- Areas potentially susceptible to slope instability
- Areas potentially susceptible to debris run out

This map contains data derived in part or wholly from sources other than Beca, and therefore, no representations or warranties are made by Beca as to the accuracy or completeness of this information.
Map intended for distribution as a PDF document
Scale may be incorrect when printed.

Contains information sourced from LINZ. Crown Copyright Reserved.
Contains Data sourced from Tasman District Council.

Aerials Sourced from the LINZ Data Service and licensed for re-use under the Creative Commons Attribution 4.0 New Zealand licence, Land Information New Zealand, Eagle Technology

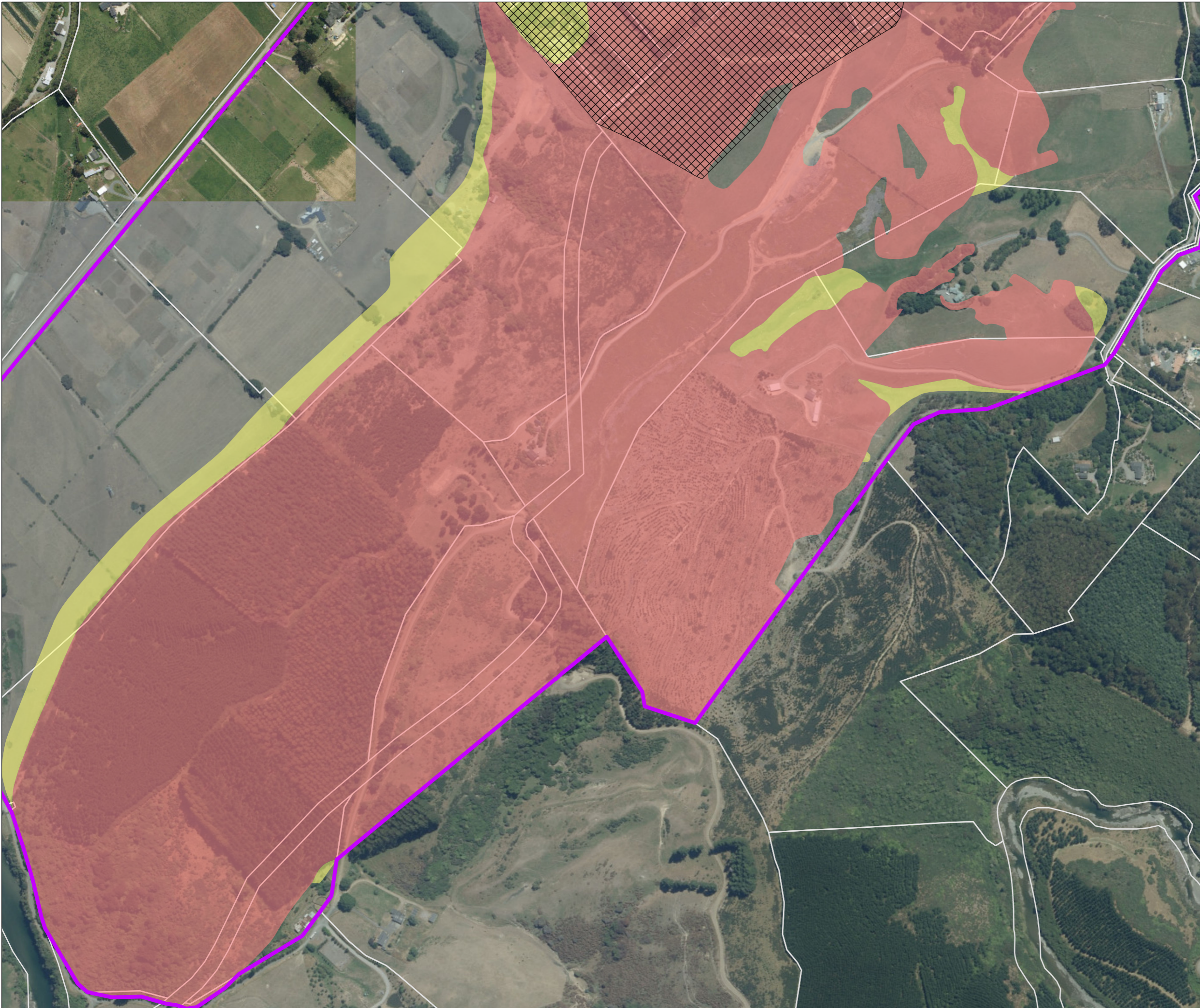
Map Scale @ A3 1:5000

0 100 200

Metres

Revision	Author	Verified	Approved	Date
2	BDJ2	RR	DC	29/05/2021
1	BDJ2	DRAFT	DRAFT	09/04/2021

Client: Tasman District Council	Discipline: GIS
Project: TDC Slope Instability Mapping	Drawing No: GIS-3160084-01a-D3



Richmond Slope Instability Susceptibility Area

Map: E1 Page 14 of 15

Legend

- Study Areas
- NZ Property Titles
- Existing TRMP SIRA Overlay

Slope Instability Susceptibility Areas

- Areas potentially susceptible to slope instability
- Areas potentially susceptible to debris run out

This map contains data derived in part or wholly from sources other than Beca, and therefore, no representations or warranties are made by Beca as to the accuracy or completeness of this information.
Map intended for distribution as a PDF document
Scale may be incorrect when printed.

Contains information sourced from LINZ. Crown Copyright Reserved.
Contains Data sourced from Tasman District Council.

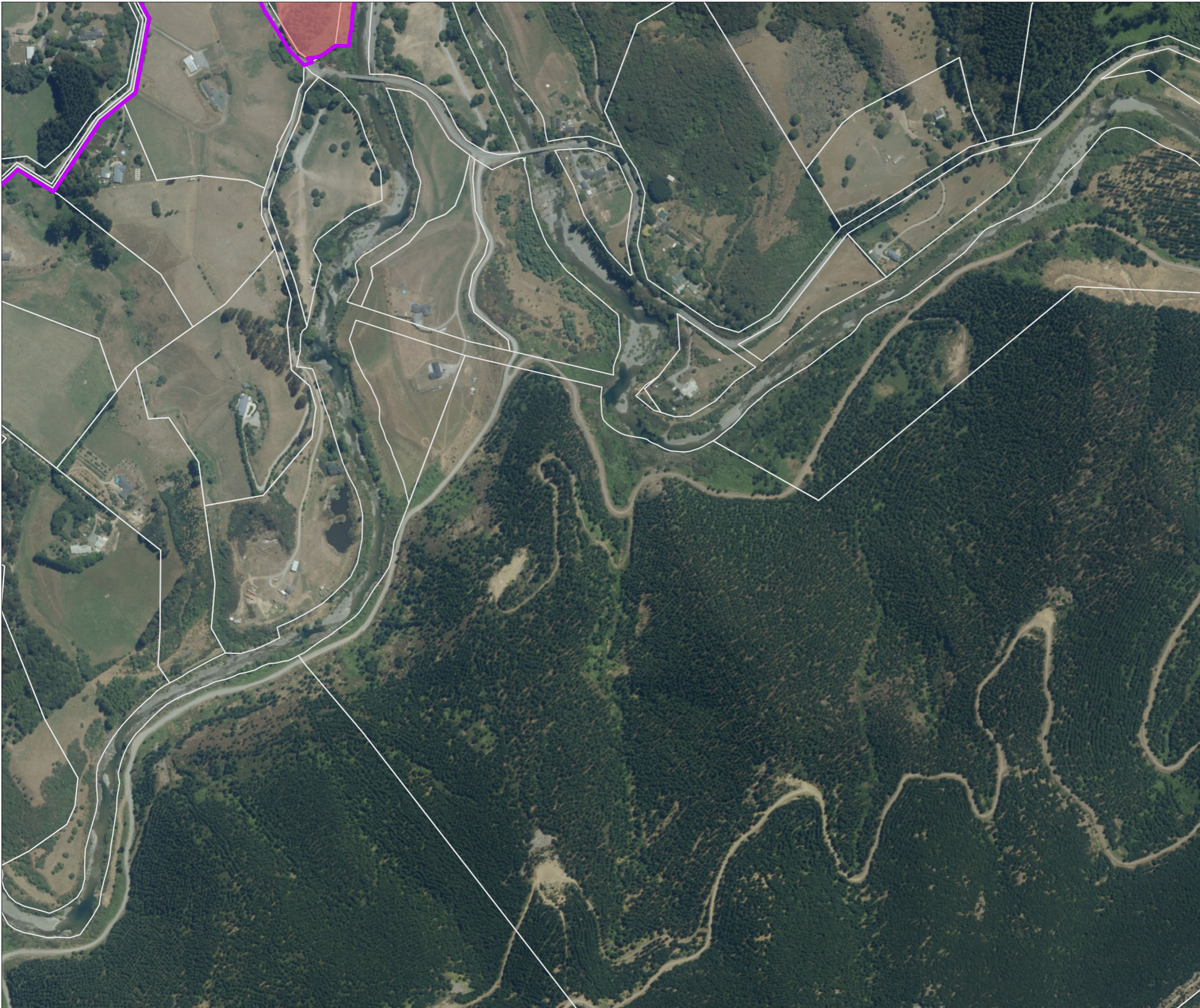
Aerials Sourced from the LINZ Data Service and licensed for re-use under the Creative Commons Attribution 4.0 New Zealand licence, Land Information New Zealand, Eagle Technology

Map Scale @ A3 1:5000

0 100 200
Metres

Revision	Author	Verified	Approved	Date	
2	BDJ2	RR	DC	28/05/2021	
1	BDJ2	DRAFT	DRAFT	09/04/2021	

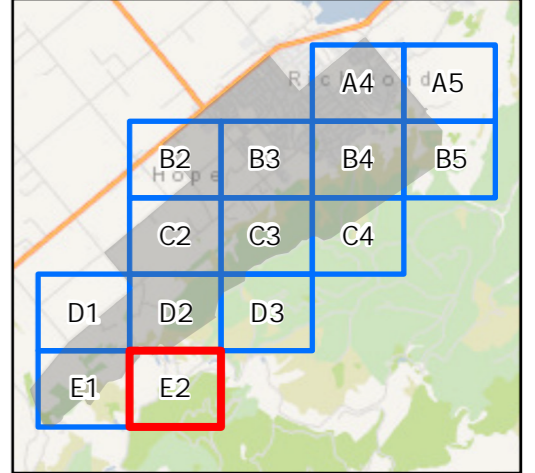
Client Tasman District Council	Discipline: GIS
Project TDC Slope Instability Mapping	Drawing No: GIS-3160084-01a-E1



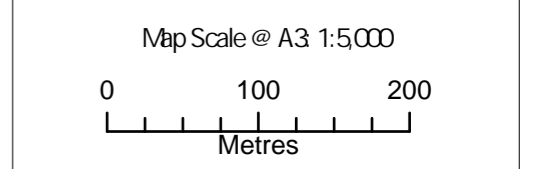
Richmond Slope Instability Susceptibility Area

Map: E2 | Page 15 of 15

- Legend**
- Study Areas
 - NZ Property Titles
 - Existing TRMP SIRA Overlay
- Slope Instability Susceptibility Areas**
- Areas potentially susceptible to slope instability
 - Areas potentially susceptible to debris run out



This map contains data derived in part or wholly from sources other than Beca, and therefore, no representations or warranties are made by Beca as to the accuracy or completeness of this information.
 Map intended for distribution as a PDF document.
 Scale may be incorrect when printed.
 Contains information sourced from LINZ, Crown Copyright Reserved.
 Contains Data sourced from Tasman District Council.
 Aerials Sourced from the LINZ Data Service and licensed for re-use under the Creative Commons Attribution 4.0 New Zealand licence, Land Information New Zealand, Eagle Technology



Revision	Author	Verified	Approved	Date	
2	BDJ2	RR	DC	28/05/2021	
1	BDJ2	DRAFT	DRAFT	09/04/2021	

Client Tasman District Council	Discipline: GIS
Project TDC Slope Instability Mapping	Drawing No: GIS-3160084-01a-E2

