

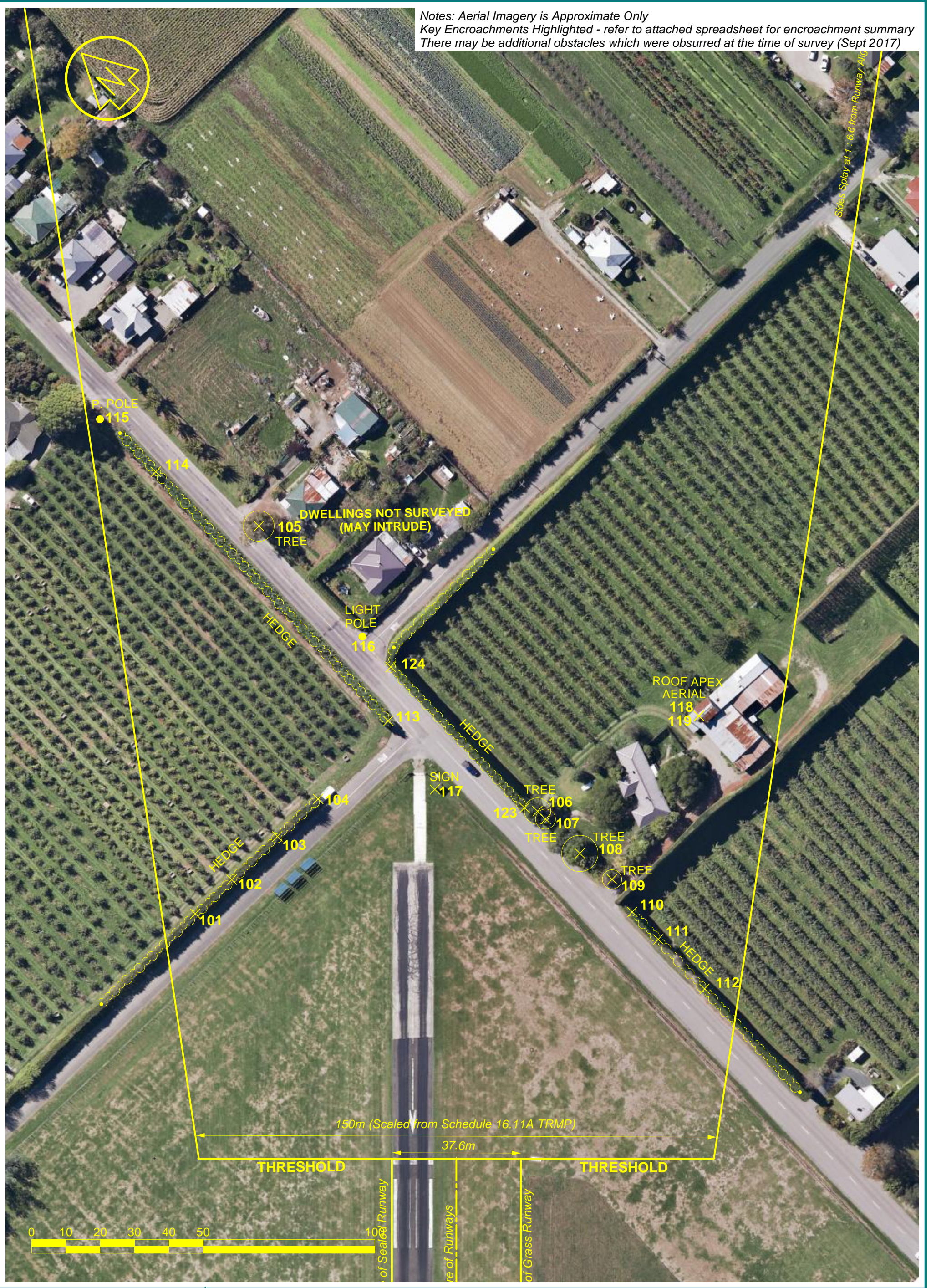
Notes: Aerial Imagery is Approximate Only
 Key Encroachments Highlighted - refer to attached spreadsheet for encroachment summary
 There may be additional obstacles which were obscured at the time of survey (Sept 2017)



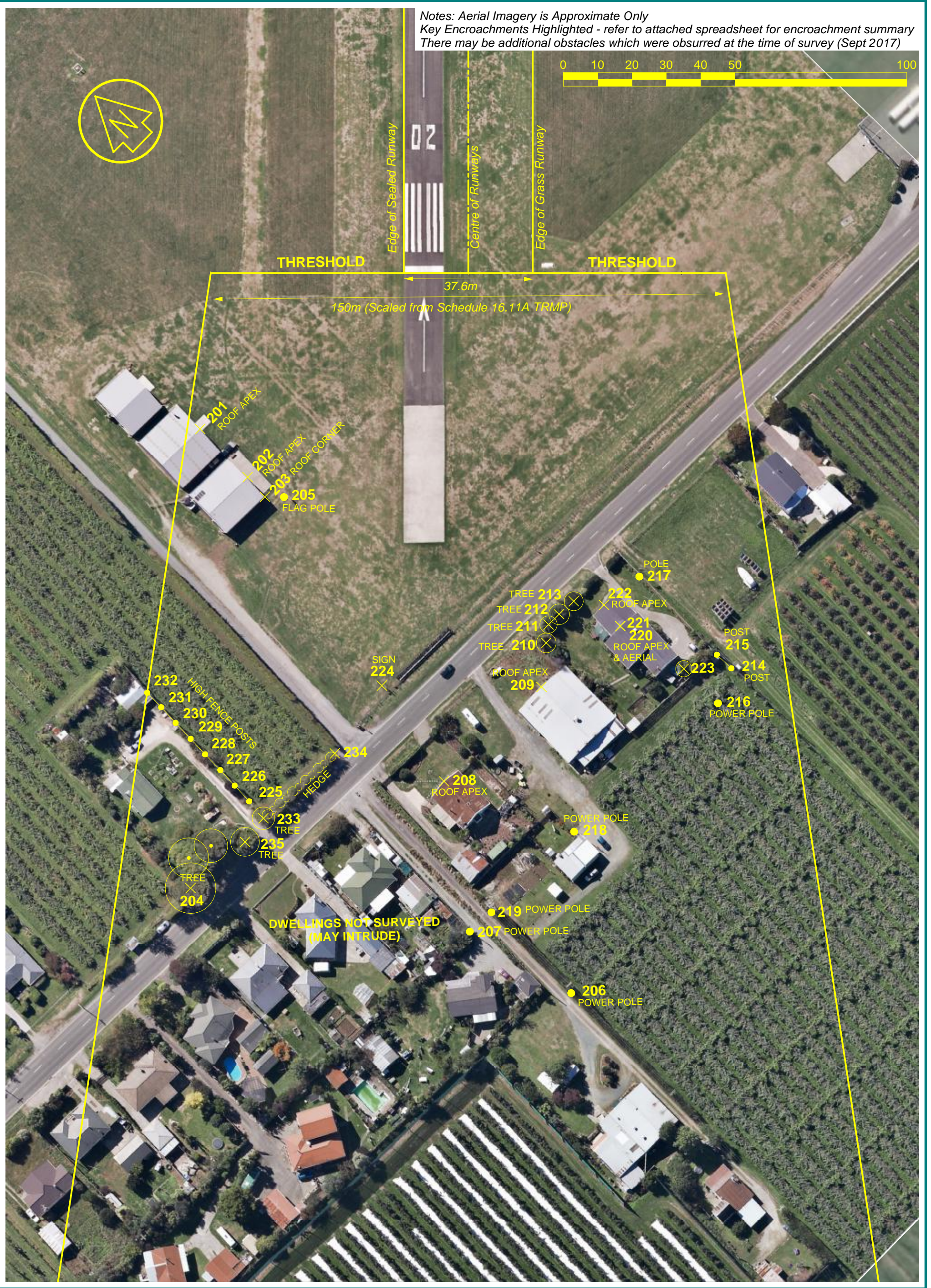
Notes: Aerial Imagery is Approximate Only
 Key Encroachments Highlighted - refer to attached spreadsheet for encroachment summary
 There may be additional obstacles which were obscured at the time of survey (Sept 2017)



Notes: Aerial Imagery is Approximate Only
 Key Encroachments Highlighted - refer to attached spreadsheet for encroachment summary
 There may be additional obstacles which were obscured at the time of survey (Sept 2017)



Notes: Aerial Imagery is Approximate Only
 Key Encroachments Highlighted - refer to attached spreadsheet for encroachment summary
 There may be additional obstacles which were observed at the time of survey (Sept 2017)



MOTUEKA AERODROME OBSTACLE LIMITATION SURFACE SURVEY - SEPTEMBER 2017

See attached plots for Obstacle Limitation Surface Definition and Location of Surveyed Points

| Point Number (see plots) | Obstacle Description | Reduced Levels - TDC Datum (NZVD2016) | | | Encroachment (m) | Height Above Ground (m) | |
|-----------------------------|-------------------------|---------------------------------------|---------------|-----------|---------------------|-------------------------|------------------|
| | | Top of Obstacle | Max Allowable | Ground RL | | Obstacle Ht | Max Allowable Ht |
| 101 | HEDGE | 15.0 | 11.1 | 9.6 | 4.0 | 5.5 | 1.5 |
| 102 | HEDGE | 15.1 | 11.3 | 9.5 | 3.8 | 5.6 | 1.8 |
| 103 | HEDGE | 14.9 | 11.5 | 9.4 | 3.4 | 5.5 | 2.1 |
| 104 | HEDGE | 14.6 | 11.7 | 9.5 | 2.9 | 5.2 | 2.3 |
| 105 | TREE | 23.8 | 13.3 | 9.3 | 10.5 | 14.5 | 4.0 |
| 106 | TREE | 19.3 | 11.6 | 9.0 | 7.7 | 10.3 | 2.7 |
| 107 | TREE | 16.0 | 11.6 | 9.0 | 4.5 | 7.1 | 2.6 |
| 108 | TREE | 17.4 | 11.4 | 9.1 | 6.0 | 8.4 | 2.3 |
| 109 | TREE | 16.1 | 11.2 | 9.3 | 4.9 | 6.9 | 2.0 |
| 110 | HEDGE | 15.4 | 11.0 | 9.3 | 4.3 | 6.0 | 1.7 |
| 111 | HEDGE | 15.1 | 10.9 | 9.3 | 4.2 | 5.7 | 1.5 |
| 112 | HEDGE | 15.4 | 10.6 | 9.4 | 4.8 | 6.0 | 1.2 |
| 113 | HEDGE | 14.7 | 12.2 | 9.1 | 2.5 | 5.6 | 3.1 |
| 114 | HEDGE | 14.8 | 13.6 | 9.2 | 1.2 | 5.6 | 4.4 |
| 115 | POWER POLE | 17.3 | 13.9 | 9.0 | 3.3 | 8.2 | 4.9 |
| 116 | LIGHT POLE | 14.8 | 12.7 | 9.1 | 2.1 | 5.7 | 3.6 |
| 117 | SIGN | 11.8 | 11.8 | 9.2 | 0.1 | 2.6 | 2.6 |
| 118 | ROOF | 15.9 | 12.2 | 8.6 | 3.6 | 7.3 | 3.6 |
| 119 | AERIAL | 16.7 | 12.2 | 8.6 | 4.5 | 8.1 | 3.6 |
| 201 | ROOF | 17.2 | 11.8 | 11.2 | 5.4 | 6.0 | 0.6 |
| 202 | ROOF | 17.6 | 12.1 | 11.2 | 5.5 | 6.4 | 0.9 |
| 203 | ROOF | 16.0 | 12.2 | 11.1 | 3.8 | 4.9 | 1.1 |
| 204 | TREE | 29.9 | 14.5 | 11.4 | 15.4 | 18.5 | 3.1 |
| 205 | FLAG POLE | 15.4 | 12.2 | 10.9 | 3.2 | 4.5 | 1.3 |
| 206 | POWER POLE | 19.6 | 15.1 | 10.7 | 4.5 | 8.9 | 4.4 |
| 207 | POWER POLE | 16.9 | 14.7 | 10.7 | 2.2 | 6.2 | 4.0 |
| 208 | ROOF | 16.6 | 13.9 | 11.1 | 2.8 | 5.5 | 2.8 |
| 209 | ROOF | 15.8 | 13.3 | 11.0 | 2.4 | 4.8 | 2.3 |
| 210 | TREE | 17.2 | 13.1 | 10.9 | 4.2 | 6.4 | 2.2 |
| 211 | TREE | 17.0 | 12.9 | 10.8 | 4.1 | 6.2 | 2.1 |
| 212 | TREE | 16.9 | 12.9 | 10.7 | 4.0 | 6.1 | 2.1 |
| 213 | TREE | 16.3 | 12.8 | 10.8 | 3.5 | 5.5 | 2.1 |
| 214 | POST | 16.8 | 13.2 | 10.4 | 3.6 | 6.3 | 2.8 |
| 215 | POST | 17.0 | 13.1 | 10.6 | 3.9 | 6.4 | 2.6 |
| 216 | POWER POLE | 18.9 | 13.4 | 10.5 | 5.5 | 8.5 | 2.9 |
| 217 | POLE | 16.1 | 12.7 | 10.5 | 3.4 | 5.6 | 2.2 |
| 218 | POWER POLE | 19.7 | 14.1 | 10.8 | 5.6 | 8.9 | 3.4 |
| 219 | POWER POLE | 19.8 | 14.6 | 10.9 | 5.2 | 8.9 | 3.7 |
| 220 | ROOF | 15.6 | 13.0 | 10.9 | 2.7 | 4.7 | 2.1 |
| 221 | TV AERIAL | 17.2 | 13.0 | 10.9 | 4.2 | 6.3 | 2.1 |
| 222 | ROOF | 14.8 | 12.8 | 10.9 | 1.9 | 3.9 | 2.0 |
| 223 | TREE | 16.3 | 13.2 | 10.7 | 3.1 | 5.6 | 2.5 |
| 224 | SIGN | 13.9 | 13.3 | 10.9 | 0.6 | 3.1 | 2.4 |
| 225 | POST | 16.9 | 14.0 | 11.2 | 2.9 | 5.7 | 2.8 |
| 226 | POST | 16.9 | 13.9 | 11.1 | 3.0 | 5.8 | 2.8 |
| 227 | POST | 16.7 | 13.8 | 11.3 | 3.0 | 5.5 | 2.5 |
| 228 | POST | 16.9 | 13.7 | 11.1 | 3.2 | 5.7 | 2.6 |
| 229 | POST | 16.9 | 13.6 | 11.2 | 3.3 | 5.7 | 2.4 |
| 230 | POST | 16.9 | 13.5 | 11.3 | 3.4 | 5.6 | 2.2 |
| 231 | POST | 17.0 | 13.4 | 11.3 | 3.6 | 5.7 | 2.1 |
| 232 | POST | 17.2 | 13.3 | 11.3 | 3.8 | 5.8 | 2.0 |
| 233 | TREE | 20.9 | 14.1 | 11.2 | 6.8 | 9.7 | 2.8 |
| 234 | HEDGE | 17.3 | 13.7 | 11.1 | 3.6 | 6.2 | 2.6 |
| 235 | TREE | 20.6 | 14.2 | 11.0 | 6.4 | 9.6 | 3.2 |

Note: Ground Levels have been derived from TDC's 2015 LIDAR data and are subject to change

Some obstacles obscured at time of survey