



Air Discharge Assessment of Effects

✦ Prepared for

Tasman Bay Asphalt

✦ October 2020



PATTLE DELAMORE PARTNERS LTD
Level 4, 111 Customhouse Quay,
Wellington 6011
PO Box 6136, Wellington 6141, New Zealand

Tel +64 4 471 4130 Fax +64 4 471 4131
Website <http://www.pdp.co.nz>
Auckland Tauranga Wellington Christchurch



solutions for your environment



TASMAN BAY ASPHALT - AIR DISCHARGE ASSESSMENT OF EFFECTS

Quality Control Sheet

TITLE Air Discharge Assessment of Effects

CLIENT Tasman Bay Asphalt

VERSION Final

ISSUE DATE 28 October 2020

JOB REFERENCE W02385800

SOURCE FILE(S) W02385800_Final.docx

DOCUMENT CONTRIBUTORS

Prepared by

SIGNATURE

Chris Bender

Reviewed and Approved by

SIGNATURE

Deborah Ryan

Limitations:

This report has been prepared by Pattle Delamore Partners Limited (PDP) on the basis of information provided by Tasman Bay Asphalt and others (not directly contracted by PDP for the work, including Staig & Smith Limited. PDP has not independently verified the provided information and has relied upon it being accurate and sufficient for use by PDP in preparing the report. PDP accepts no responsibility for errors or omissions in, or the currency or sufficiency of, the provided information.

This report has been prepared by PDP on the specific instructions of Tasman Bay Asphalt for the limited purposes described in the report. PDP accepts no liability if the report is used for a different purpose or if it is used or relied on by any other person. Any such use or reliance will be solely at their own risk.



Executive Summary

Tasman Bay Asphalt is proposing to establish an asphalt manufacturing plant at Bartlett Road, near Richmond in Tasman District. Tasman Bay Asphalt is applying to Tasman District Council for a resource consent for discharges to air that will result from the operation of the plant. The proposed site is in a rural area approximately 3.5 kilometres to the west of the Richmond airshed.

The asphalt plant will typically operate for up to 10 hours per day and produce up to 130 tonnes of asphalt per hour of operation. The discharges to air from the processes at the proposed site are principally particulate matter and products of combustion associated with the manufacture of asphalt.

This report provides an assessment of effects on the environment for the proposed site's discharges to air. The assessment demonstrates that the proposed processes and controls will result in a level of effects on the environment that are less than minor. In particular, air dispersion modelling for the discharges show concentrations downwind of the asphalt plant will be well below guidelines and standards for air quality and will not exceed air quality standards when considering the background.



Table of Contents

| SECTION | PAGE |
|--------------------------------------------------------------------------|-----------|
| Executive Summary | ii |
| 1.0 Introduction | 6 |
| 2.0 Statutory Requirements | 6 |
| 2.1 Tasman Resource Management Plan | 6 |
| 2.2 National Environmental Standards | 6 |
| 2.3 Ambient Air Guidelines | 8 |
| 3.0 Location and Receiving Environment | 10 |
| 3.1 Location and Zoning of Site, and Adjacent Land Use | 10 |
| 3.2 Topography and Meteorology | 10 |
| 3.3 Sensitive Receptors | 11 |
| 3.4 Background Ambient Air Quality | 14 |
| 4.0 Description and Operation of Plant & Associated Processes | 16 |
| 4.1 Drum Mix Plant | 16 |
| 4.2 Raw Materials | 19 |
| 4.3 Operation of the Plant | 20 |
| 5.0 Properties of Contaminants Discharged into Air | 21 |
| 5.1 Contaminants Discharged to Air from Asphalt Manufacture | 21 |
| 5.2 Discharges from Other Activities | 22 |
| 5.3 Nature and Composition of Discharges to Air – Normal Operation | 23 |
| 5.4 Nature and Composition of Discharges to Air – Abnormal Operation | 24 |
| 5.5 Process Monitoring | 25 |
| 6.0 Assessment of Effects of Discharges on the Environment | 25 |
| 6.1 Introduction | 25 |
| 6.2 Atmospheric Dispersion Modelling of Chimney Discharge | 26 |
| 6.3 Dispersion Modelling Results | 29 |
| 6.4 Cumulative Effects | 31 |
| 6.5 Contour Plots | 31 |



Table of Figures

| | |
|------------------------------------------------------------------------------------------------------|----|
| Figure 1: Tasman Bay Asphalt Site with Richmond Airshed | 9 |
| Figure 2: Location of Tasman Bay Asphalt Plant | 10 |
| Figure 3: Nelson Airport Windrose, 2007-2012 | 11 |
| Figure 4: Nearby Sensitive Receptors | 13 |
| Figure 5: PM ₁₀ Concentrations as Measured at Richmond Central Monitoring Station in 2019 | 15 |
| Figure 6: Marini T-Box Asphalt Plant | 17 |
| Figure 7: Diagram of Parallel Drum Mix Asphalt Plant | 18 |
| Figure 8: CALMET Windrose Extracted at Tasman Bay Asphalt Site, 2008-2009 | 28 |
| Figure 9: Predicted MGLCs PM ₁₀ (24-Hour Averages) | 33 |
| Figure 10: Predicted MGLCs PM ₁₀ (Annual Averages) | 34 |

Table of Tables

| | |
|------------------------------------------------------------------------------------------------------|----|
| Table 1: NES Air Quality: Ambient Air Quality Standards | 7 |
| Table 2: New Zealand Ambient Air Guidelines (NZAAQG), May 2002 | 8 |
| Table 3: Nearest Sensitive Receptor Locations | 12 |
| Table 4: Measured PM ₁₀ Concentrations at Central Richmond Ambient Air Monitoring Station | 14 |
| Table 5: Assumed Background Contaminant Concentrations | 16 |
| Table 6: Other Air Discharge Activities | 23 |
| Table 7: Parameters for Tasman Bay Asphalt Plant | 24 |
| Table 8: Dispersion Modelling Parameters | 29 |
| Table 9: Highest Predicted MGLCs for Asphalt Plant Without Background | 30 |
| Table 10: Highest Predicted MGLCs for the Proposed Asphalt Plant (including background) | 32 |

Appendices

| | |
|-----------------------------|--|
| Appendix A: CALPUFF Summary | |
|-----------------------------|--|

1.0 Introduction

Tasman Bay Asphalt is proposing to establish an asphalt plant to be located at 272 Bartlett Road, Richmond.

This report provides a technical report to support an assessment of effects on the environment (AEE) of air discharges from the proposed asphalt plant and associated activities. This report:

- ∴ Describes the operation of the asphalt plant;
- ∴ Discusses the discharge of contaminants into air from the asphalt plant and their potential effects on the environment; and,
- ∴ Assess the potential effects of the asphalt plant referencing the relevant assessment criteria.

2.0 Statutory Requirements

2.1 Tasman Resource Management Plan

The Tasman District Council's (TDC) *Tasman Resource Management Plan* (TRMP) became operative on November 2008. The TRMP addresses the effects of the discharge of contaminants to air in the district. Chapter 36.3 of the TRMP provides rules for managing discharges to air from industrial and agricultural activities in the District.

2.2 National Environmental Standards

In 2004, the New Zealand Government gazetted the Resource Management (National Environmental Standards for Air Quality) Regulations 2004 (NESAQ). The NESAQ are designed to protect public health and the environment. The NESAQ differ from the New Zealand Ambient Air Quality Guidelines (NZAAQGs) in that they set an allowable level of exceedance and cover only one time period for the average concentration that is set for each contaminant. Table 1 presents the NESAQ relevant to Tasman Bay's proposal.

| Contaminant | Threshold Concentration | Averaging Time | Permissible Exceedances |
|----------------------------------------|--------------------------------|-----------------------|--------------------------------|
| Carbon monoxide (CO) | 10 mg/m ³ | 8-hour | One in a 12-month period |
| Nitrogen dioxide (NO ₂) | 200 µg/m ³ | 1-hour | 9 in a 12-month period |
| Particulate matter (PM ₁₀) | 50 µg/m ³ | 24-hour | One in a 12-month period |
| Sulphur dioxide (SO ₂) | 350 µg/m ³ | 1 hour | 9 in a 12-month period |
| | 570 µg/m ³ | 1 hour | None |

The Ministry for the Environment (MfE) has consulted on proposed amendments to the NESAQ which would establish ambient air quality standards for PM_{2.5}. The proposal is that the PM_{2.5} NES be set at a level 50% of the PM₁₀ standards (i.e. 25 µg/m³ as a 24-hour and 10 µg/m³ as an annual average). We have therefore included an assessment of the discharges against the potential NESAQ for PM_{2.5}¹.

The NESAQ uses the term “airshed”, which defines where air quality must be monitored and for polluted airsheds determines the basis for certain decisions on resource consents discharging PM₁₀. MfE has gazetted airsheds for managing air quality, which are generally in populated areas where the NESAQ for PM₁₀ is being breached or is likely to be breached.

The NESAQ Regulations have a particular emphasis on managing PM₁₀, with specific requirements for new discharges as follows:

- ∴ **Regulation 17(1)** - Applies to an application for resource consent to discharge PM₁₀ into a polluted airshed. If the discharge is likely to increase the concentration of PM₁₀ by more than 2.5 micrograms per cubic metre in any part of a polluted airshed other than the site on which the consent would be exercised, then the consenting authority must decline the application for resource consent.
- ∴ **Regulation 17(2)** – States that Regulation 17(1) does not apply if the proposed consent is for the same activity at the same site (i.e. is a renewal of an existing consent), or is a new activity replacing an existing consented activity, and the amount and rate of PM₁₀ discharge of the proposed consent is the same as or less than that permitted by the existing consent.

¹ MfE, *Proposed amendments to the National Environmental Standards for Air – Particulate Matter and Mercury Emissions - Summary document*, February 2020.

- ∴ **Regulation 17(3)** – States that the consenting authority may allow the consent if the applicant can reduce (offset) the PM₁₀ discharged from another source or sources into the polluted airshed by the same or greater amount than the amount likely to be discharged by the proposed consent.

The proposed Tasman Bay asphalt plant is located approximately 3 kilometres to the west of the Richmond airshed. The potential for discharges from the site to contribute to the ambient PM₁₀ concentrations in the airshed has been considered in this assessment. Figure 1 shows the proposed site relative to the Richmond airshed.

TDC has undertaken monitoring for PM₁₀ at Oxford Street, which is in the Richmond airshed, since 2003. The monitoring has demonstrated that the Richmond airshed is deemed polluted under the NESAQ regulations. Consequently, any new consent for air discharges impacting on the airshed needs to consider Regulation 17 of the NESAQ.

2.3 Ambient Air Guidelines

The Ministry for the Environment published ambient air guideline values for New Zealand in 2002. The primary purpose of the guidelines is to promote sustainable management of the air resource in New Zealand. The guideline values published are the minimum requirements that outdoor air quality should meet to protect human health and the environment. The guidelines provide values for contaminants that are commonly discharged from industrial sources. Table 2 presents the relevant New Zealand Ambient Air Guideline (NZAAQG) values.

| Table 2: New Zealand Ambient Air Guidelines (NZAAQG), May 2002 | | |
|----------------------------------------------------------------|-------------------------|----------------|
| Contaminant | Threshold Concentration | Averaging Time |
| Carbon monoxide | 30 mg/m ³ | 1-hour |
| | 10 mg/m ³ | 8-hour |
| Fine particles (PM ₁₀) | 50 µg/m ³ | 24-hour |
| | 20 µg/m ³ | annual |
| Nitrogen dioxide | 200 µg/m ³ | 1-hour |
| | 100 µg/m ³ | 24-hour |
| Sulphur dioxide | 350 µg/m ³ | 1-hour |
| | 120 µg/m ³ | 24-hour |

TASMAN BAY ASPHALT - AIR DISCHARGE ASSESSMENT OF EFFECTS



Figure 1: Tasman Bay Asphalt Site with Richmond Airshed

3.0 Location and Receiving Environment

3.1 Location and Zoning of Site, and Adjacent Land Use

The proposed Tasman Bay Asphalt site is located at within the Rural 2 zone under the Tasman District Plan. The site is on the eastern bank of the Waimea River and is surrounded by agricultural and viticultural land uses. The nearest residence is approximately 700 metres to the east of the site.

Figure 2 shows the location of the proposed asphalt plant. The site is at 272 Bartlett Road, with legal description Lot 1 DP 368439 RT493293. Access to the site is provided from Bartlett Road.



Figure 2: Location of Tasman Bay Asphalt Plant

3.2 Topography and Meteorology

The surrounding topography is generally of low relief. The average altitude of the area is approximately 18 metres above mean sea level. The site is located in the Waimea River Valley with the terrain gradually rising to the east and west of the river, and to the south away from the coast.

The nearest full-time meteorological station is located at Nelson Airport, which is around 9 kilometres to the northeast of the site. A windrose of the 2007-2012 period is provided as Figure 3. The most common wind directions are between the west and southwest. The average wind speed for the period was 3.8 m/s, with calm periods (wind speeds less than 0.5 m/s) for 1 percent of the time.

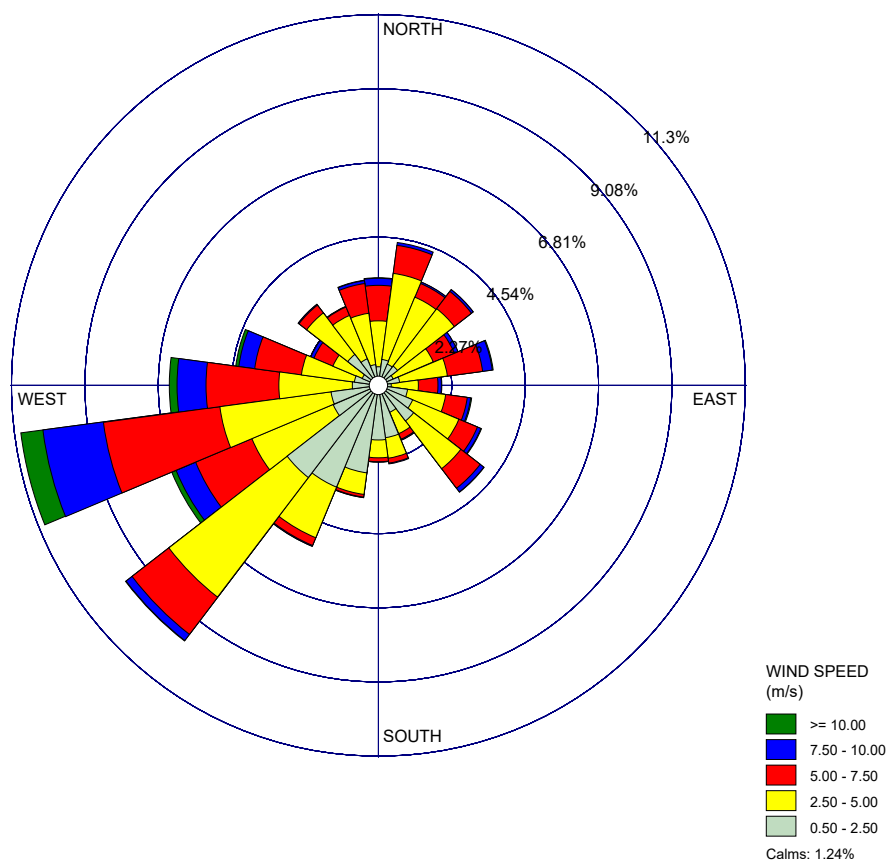


Figure 3: Nelson Airport Windrose, 2007-2012

3.3 Sensitive Receptors

Sensitive receptors are considered for their susceptibility to the effects from discharges to air. Typical sensitive receptors considered include:

- ∴ Residential properties;
- ∴ Retirement villages;
- ∴ Hospitals or medical centres;
- ∴ Schools;
- ∴ Marae;
- ∴ Libraries; and
- ∴ Public outdoor locations (e.g. parks, reserves, sports fields, beaches).



The proposed site is surrounded principally by agricultural land uses, with a few residences, which are considered as 'sensitive receptors' for this assessment.

Table 3 presents the selected residential receptors nearest to the proposed site and their locations are shown in Figure 4. These residences represent 'worst-case' sensitive receptor locations for this assessment given that they are the closest receptors to the discharge location.

| Table 3: Nearest Sensitive Receptor Locations | | | | |
|-----------------------------------------------|--------------------|-----------------------------|-------------|--------------|
| ID | Address | Distance from Asphalt Plant | NZTM | |
| | | | Easting (m) | Northing (m) |
| R1 | 554 Waimea West Rd | 1.1 km west | 1609074 | 5423687 |
| R2 | 29 Challies Way | 1.7 km northwest | 1608886 | 5424452 |
| R3 | 34 Challies Way | 1.7 km northwest | 1609052 | 5424617 |
| R4 | 701 Waimea West Rd | 1.8 km northwest | 1609470 | 5425041 |
| R5 | 150 Bartlett Rd | 1.2 km northeast | 1610851 | 5424269 |
| R6 | 208 Bartlett Rd | 0.7 km northeast | 1610675 | 5423803 |
| R7 | 239 Bartlett Rd | 0.7 km east-southeast | 1610757 | 5423083 |
| R8 | 202 Edens Road | 0.6 km southeast | 1610403 | 5422760 |



TASMAN BAY ASPHALT - AIR DISCHARGE ASSESSMENT OF EFFECTS

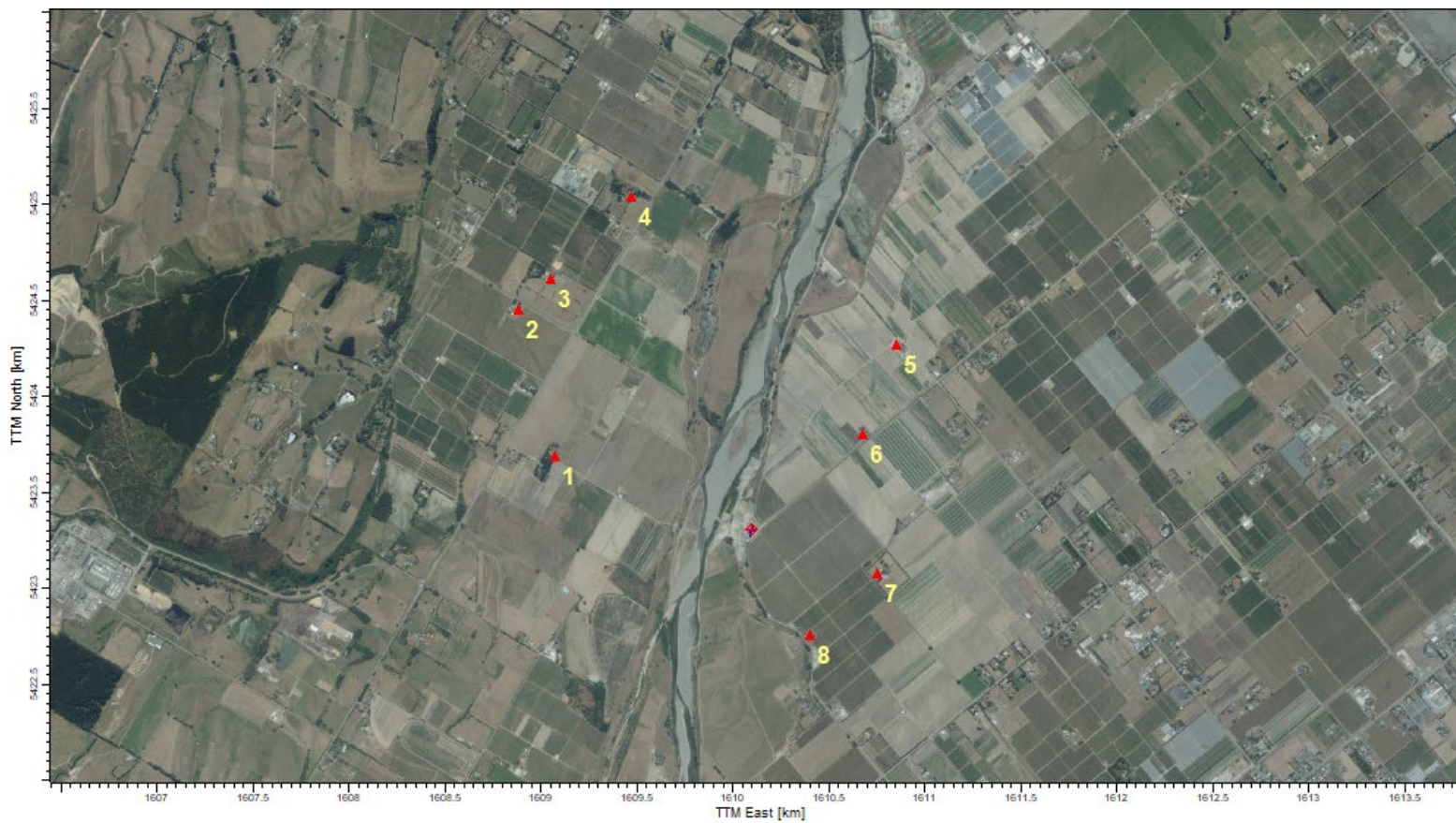


Figure 4: Nearby Sensitive Receptors

3.4 Background Ambient Air Quality

Background concentrations of contaminants will vary depending on local activities and seasonal variations. Activities in the surrounding area are a combination of rural land uses, with a range of sources contributing to contaminants in air.

As mentioned above the Richmond airshed monitoring station is located at 86 Oxford Street, which is approximately 5 kilometres to the east of the site.

Table 4 summarises the highest 24-hour average PM₁₀ concentrations and annual average concentrations measured at the monitoring site for the most recent five-year period. Figure 5 graphically represents the 24-hour average PM₁₀ concentrations for the 2019 year.

| Table 4: Measured PM ₁₀ Concentrations at Central Richmond Ambient Air Monitoring Station | | | |
|------------------------------------------------------------------------------------------------------|-----------------------|--------------------------------------------------------------|------------------------------|
| Year | Number of Exceedances | Measured PM ₁₀ Concentration (µg/m ³) | |
| | | Maximum 24-Hour Average Concentration | Annual Average Concentration |
| 2015 | 3 | 60 | 18 |
| 2016 | 5 | 66 | 18 |
| 2017 | 2 | 52 | 17 |
| 2018 | 12 | 76 | 19 |
| 2019 | 4 | 58 | 18 |

Notes: Data obtained from <https://www.lawa.org.nz/explore-data/tasman-region/air-quality/>

A GNS report commissioned by TDC² (GNS, November 2017), found that the main contribution of particulate matter to the Richmond airshed is from biomass burning, assumed to be primarily from solid fuel fires used for domestic heating. From the available data GNS found that biomass burning was the source of around 49% of PM₁₀ measured during June 2013 to October 2016. For PM_{2.5} measured during October 2015 to October 2016 biomass burning was 75% of the measured PM_{2.5}.

² Apportionment of PM_{2.5} and PM₁₀ sources in the Richmond airshed, Tasman District, GNS, 2017

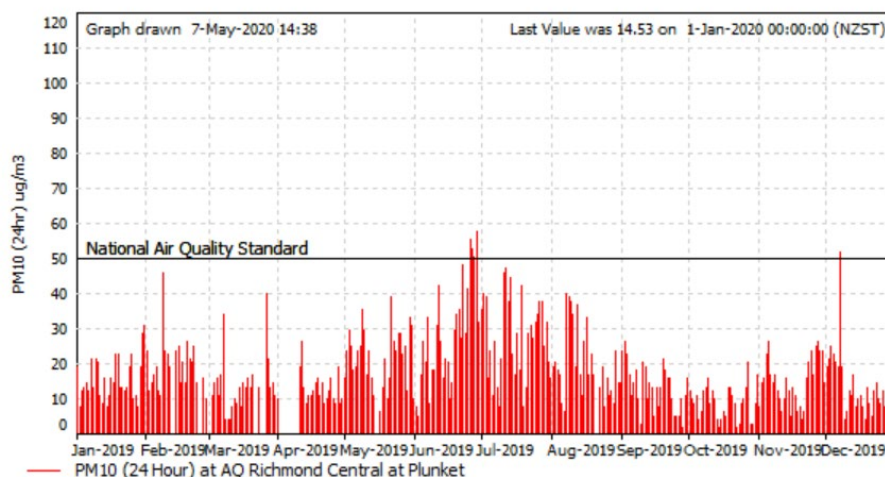


Figure 5: PM₁₀ Concentrations as Measured at Richmond Central Monitoring Station in 2019

The concentrations of particulate matter near the proposed asphalt plant site will be lower than what has been measured at the Richmond monitoring site, given the rural nature of the surroundings and the distance to the residential and industrial sources in the Richmond area.

Background monitoring data for carbon monoxide, oxides of nitrogen, and other contaminants of potential interest were not found to be available for the locality.

The MfE's *Good Practice Guide for Assessing Discharges to Air from Industry* (MfE, 2016) (Good Practice Guide) provides guidance on using default values for background air quality where there is no monitoring data. The Good Practice Guide recommends using default background air quality values provided by Waka Kotahi, New Zealand Transport Agency (NZTA). The default values are intended to provide a conservative estimate of likely background concentrations.

Table 5 shows the default values for PM₁₀ and NO₂ provided by NZTA relevant to the Tasman Bay Asphalt site. We have used the default values for assessing the likely background air quality and potential for cumulative impacts in the surrounding rural area. We consider this is appropriate for PM₁₀ in preference to using monitoring data for the Richmond airshed because air quality in the immediate environs will be better than measured within the airshed.

Background values for carbon monoxide and SO₂ concentrations have been adopted from the Good Practice Guide default values recommended for a rural residential area.

To estimate the PM_{2.5} background concentrations, it has been assumed that the PM_{2.5} to PM₁₀ ratio is 50%, which is consistent with assumptions generally applied for rural areas³.

| Table 5: Assumed Background Contaminant Concentrations | | | |
|----------------------------------------------------------------------------------------------------------------------------------------------------------------------------------------------------------------------------------------------------------------------------------------------------------------------------------------------------------------------------------------------------------------------------------------------------------------------------------------------------------------|-------------------------|---------------------------------|---------------------------------------|
| Contaminant | Averaging Period | Assumed Background Value | Source |
| PM ₁₀ | 24-hour average | 24.7 µg/m ³ | NZTA ¹ |
| | Annual average | 18 µg/m ³ | Richmond Monitoring Site |
| PM _{2.5} | 24-hour average | 12.4 µg/m ³ | NZTA ^{1,2} |
| | Annual average | 9 µg/m ³ | Richmond Monitoring Site ² |
| NO ₂ | 1-hour average | 65 µg/m ³ | NZTA ¹ |
| | 24-hour average | 43 µg/m ³ | NZTA ¹ |
| | Annual average | 16 µg/m ³ | NZTA ¹ |
| CO | 1-hour average | 5 mg/m ³ | MfE |
| | 8-hour average | 2 mg/m ³ | MfE |
| SO ₂ | 1-hour average | 20 µg/m ³ | MfE |
| | 24-hour average | 8 µg/m ³ | MfE |
| <p>Notes:</p> <ol style="list-style-type: none"> https://www.nzta.govt.nz/roads-and-rail/highways-information-portal/technical-disciplines/air-quality-climate/planning-and-assessment/background-air-quality/ Background PM_{2.5} concentrations assumed to be 50% of background PM₁₀. | | | |

4.0 Description and Operation of Plant & Associated Processes

4.1 Drum Mix Plant

The proposed asphalt plant is a Marini Carbon T-Box 130 drum mix plant. Drum mix asphalt plants have historically been the most common type of asphalt plant

³ NIWA, PM_{2.5} in New Zealand Modelling the current (2018) levels of fine particulate air pollution, December 2019.

in New Zealand. Drum mix plants operate on a continuous basis with the drum used to both dry and heat aggregate and to mix liquid bitumen with hot aggregate to produce hot mix asphalt. A photograph of the Marini T-box 130 plant is shown as Figure 6 and Figure 7 is a diagram of a typical parallel-flow drum mix plant.



Figure 6: Marini T-Box Asphalt Plant

The plant will have a maximum production capacity of 130 tonne product per hour. The particulate emission control system is by bag filtration and hot mix asphalt storage is in elevated bins. The plant will consist of the following sections:

- ∴ Aggregate storage facilities;
- ∴ Four aggregate cold feed bins and associated conveyor to the dryer drum;
- ∴ Recycled Asphalt Product (RAP) feed unit;



TASMAN BAY ASPHALT - AIR DISCHARGE ASSESSMENT OF EFFECTS

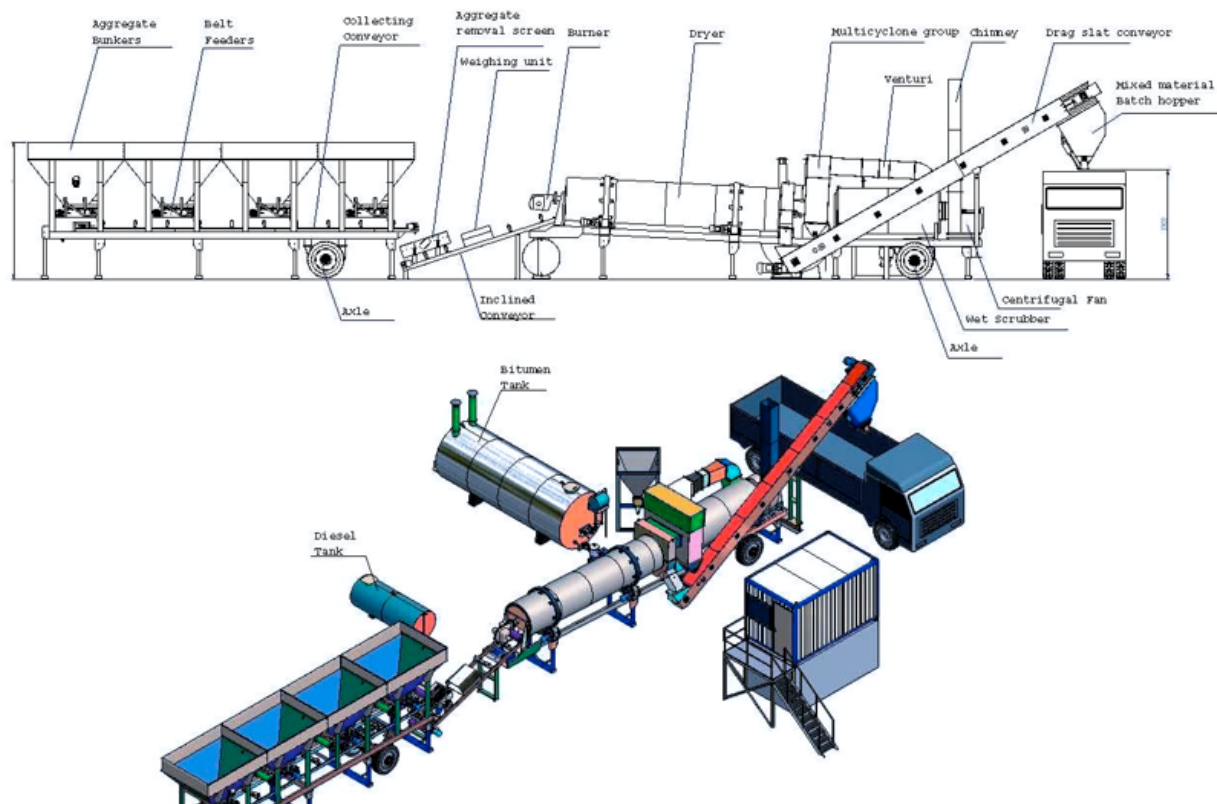


Figure 7: Diagram of Parallel Drum Mix Asphalt Plant



- ∴ Asphalt storage silo, electrically heated, fitted with atmospheric breathers for pressure equalisation;
- ∴ Double-skinned diesel oil fuel storage tank;
- ∴ Drum mix asphalt plant (consisting of the rotary drying drum; fuel burner and integral combustion air fan; bitumen drum injection system; and an expansion box);
- ∴ A bag filtration system with a 7.8 m high discharge stack (effective stack height of 7.3 m due to local ground elevations);
- ∴ Hot mix storage bins supplied from an enclosed slat conveyor from the mixer; and,
- ∴ A control room.

A burner for a 130 tonne/hour parallel flow plant at maximum rate of heat release has a required thermal capacity of about 13 MW gross. This rate of heat release is calculated from a fuel consumption rate of about 6 litres of diesel oil per tonne of product. At the maximum asphalt production rate of 130 tonne per hour, about 780 litres (650 kg) of diesel oil will be burnt per hour.

4.2 Raw Materials

4.2.1 Aggregates

Aggregate raw materials for asphalt manufacture are gravel chip, sand and crusher dust (collectively called aggregates). Aggregates are obtained from greywacke, the rock almost exclusively used in most areas of New Zealand for asphalt and for most road and general construction purposes.

The only mineral of potential concern in greywacke is crystalline silica (e.g. quartz) which is present in variable concentrations depending on the aggregate source. If quartz is in a respirable form and breathed in high concentration for sufficient time it may cause the occupational illness silicosis. It is highly unlikely that the emission of respirable quartz dust from any part of the process (even during upset conditions) will be of sufficiently high concentration and duration to have any occupational or (especially) public health significance.

Provided that it is well washed, storage of coarse aggregate has low dust potential even when the aggregate is dry and during strong winds. Crusher dust, which has a high fines content (and to a lesser degree sand), is generally received damp and kept damp while in storage to prevent dust generation while unloading, and during storage and transfer from the storage bin to the cold feed bins.

Aggregate storage will be semi-enclosed, and crusher dust and sand will be covered as necessary during warm weather to minimise drying out without having to apply excessive water. Aggregate received by truck at the site will be



damp to minimise dust generation during tipping and subsequent transfer operations.

4.2.2 Bitumen

Bitumen is a solid to semi-solid residue resulting from the distillation of heavy crude oils. Bitumen consists of a complex mixture of high boiling point paraffinic, aromatic hydrocarbons, and heterocyclic compounds containing sulphur, nitrogen and oxygen. Bitumen is stored hot (135°C to 165°C) using electric heating via thermal oil heat exchangers to keep contents sufficiently fluid to pump to the hot mix drum and inject into the aggregate mix. Bitumen tank temperature is controlled by thermostat set in fail-safe mode. The storage tanks are fitted with a short breather vent to permit pressure equalisation.

4.2.3 Release Agent

Truck and trailer trays will be swabbed with a proprietary release agent solution to prevent asphalt sticking to the tray. This is normal practice in the industry.

4.2.4 Fuel Storage

Diesel fuel will be standard automotive fuel grade, which currently has a maximum sulphur content of 0.001% by weight. Diesel fuel storage tanks are double skinned and equipped with internal monitoring to ensure leaks do not occur. Facilities are also designed to ensure that if spills occur, they will be contained to prevent land and water contamination.

4.3 Operation of the Plant

Drum mix plants operate on a continuous basis with the drum used to both dry and heat aggregate and to mix hot aggregate with bitumen. Aggregate is conveyed into the drum at the burner end and then travels down the slightly inclined rotating drum (which is fitted with flights) where products of combustion from the burner and excess air dries and heats the aggregate.

The lifting motion of the flights achieves good contact between aggregate and drying gases. Hot liquid bitumen is injected into the drum about halfway down and the mixing action of the rotating drum ensures a good and even coating of bitumen on aggregate particles. A steam barrier generated by the drying aggregate, and burner design, prevents the burner flame impinging on the bitumen. Hot mix temperature ranges from about 135 to 170°C depending on the blend (about 150°C for the standard blends) and contains about 3-5% moisture. Hot asphalt discharges at the burner end about $\frac{3}{4}$ of the way along the drum onto a conveyor for transfer to thermally insulated hot storage bins and then load-out.

Combustion gases, dust, bitumen volatile matter and combustion products are drawn by an induced draught fan through the baghouse filters before gases are discharged into air through the stack. Bag filtration will remove most of the

particulate matter before discharge to air and will be designed to achieve emission concentrations of less than 20 mg/Nm³ on a dry gas basis. Most of the particulate discharged from the bag filter is expected to be PM₁₀. USEPA emission factors for asphalt plants estimate that 70% of PM₁₀ will be PM_{2.5}⁴.

Operating hours are typically expected to be between 6:30 AM and 4:00 PM during the summer, and 7:30 AM to 3:00 PM in the winter. Provision for operating at night-time is, however, needed to provide asphalt for road works that require night-time construction. The Applicant is, therefore seeking consent to operate up to a maximum of 10 hours within a 24-hour period to allow for limited night-time operations.

5.0 Properties of Contaminants Discharged into Air

5.1 Contaminants Discharged to Air from Asphalt Manufacture

The properties of contaminants discharged into air are discussed below.

5.1.1 Carbon Monoxide

Carbon monoxide (CO) is colourless and odourless but has high mammalian toxicity in relatively high concentrations. It is slowly oxidised in the atmosphere to carbon dioxide. Its most significant environmental effect, in 'high' concentrations, is human health effects.

5.1.2 Oxides of Nitrogen (NO_x)

Nitric oxide (NO), which is relatively non-toxic, odourless and colourless, is the primary compound produced during combustion (around 95% of the NO_x emitted is NO). Some of the NO in the discharge will oxidise to NO₂ as the plume drifts down wind, with the rate of conversion being dependent on the presence of oxidising capacity of the receiving atmosphere.

NO₂ is an acidic gas with a characteristic odour. It is substantially more toxic and more reactive than NO and is of more concern as an air contaminant if concentrations are excessive. In sufficient concentration, NO₂ irritates the eyes and the respiratory tract and damages vegetation.

Other sources of NO_x in the area will include motor vehicles, and other commercial and industrial fuel burning equipment.

5.1.3 Particulate Matter

Deposited particulate is particulate matter having significant settling velocity in still air, and generally has a particle diameter greater than 10 - 20 microns. The primary impact of deposited particulate is nuisance (mainly soiling).

Dust particles less than about 10 to 20 microns in size are termed 'suspended particulate' as their settling velocities are low and they disperse similar to a gas.

⁴ USEPA, AP-42, Chapter 11.1, Hot Mix Asphalt Plants, April 2004.

Fine particulate matter (PM₁₀), in sufficient concentration, can cause respiratory distress, soiling of surfaces and will accelerate corrosion of surfaces by retaining moisture and acidic materials.

Health surveys have shown a correlation between the concentration of fine particulate in the atmosphere and increased frequency of respiratory and cardiovascular illness, and increased mortality, especially in those who are suffering from significant illness. These studies have also shown a correlation with increased prevalence of asthma symptoms. To date, the increase in adverse health effects with increasing concentration of fine particulate in the air has not been related to particle composition but only to particle size, concentration, and exposure time. Particles having a diameter of 10 microns or less (PM₁₀), being respirable, are of principal concern. Particles with a diameter of less than 2.5 microns (PM_{2.5}) are similarly respirable and able to go deeper into the lungs with the potential for adverse health effects.

Other sources of suspended particulate matter in the area of the site will include dust from vehicle movements on roads, PM₁₀ from motor vehicles; areas of exposed soils during dry weather conditions; and agricultural production activities.

5.1.4 Sulphur Dioxide

Sulphur dioxide (SO₂) is a colourless and pungent gas which, in sufficient concentration, irritates the eyes and respiratory tract, may damage vegetation, and promotes corrosion of some materials. Low concentrations of sulphur trioxide are also generated by oxidation of SO₂. The discharge of sulphur oxides from burning automotive diesel oil is very low, and the environmental effects from emitted SO₂ will be negligible.

Other sources of sulphur oxides in the area will be diesel-fuelled vehicles and machinery.

5.1.5 Volatile Organic Compounds (VOCs)

Combustion of diesel oil and hot bitumen emit unburnt hydrocarbons and products of incomplete combustion, or Volatile Organic Compounds (VOCs). Some VOCs are odorous and, if of excessive concentration, can cause nuisance to neighbours. Such discharges are minimised by maintaining burners, and by ensuring that drum mix plants are set-up and operated to minimise over-heating of bitumen. The main effect of emitted VOCs is odour.

5.2 Discharges from Other Activities

Table 6 describes other activities that result in discharges to air associated with the proposed asphalt plant operations.

| Table 6: Other Air Discharge Activities | |
|------------------------------------------------|--------------------------------------------------|
| Process Resulting in Discharge | Nature of Discharge and Degree of Effects |
| Stored fine aggregate (dust) | Low if protected and kept damp |
| Transfer aggregate to cold bins (dust) | Low if sand/crusher dust damp |
| Cold bins and conveyor (dust) | Low if aggregate damp |
| Bitumen storage (volatile compounds/odour) | Low – slight odour |
| Product conveyor/hot bin (odour) | Limited bitumen odour |
| Product-bin to truck (odour/smoke) | Moderate in immediate vicinity |

5.2.1 Despatch of Product from the Premises

Despatch of asphalt product from the premises will be in covered trucks and trailers. Odour from product will be minimal. No other emissions to air are expected.

5.3 Nature and Composition of Discharges to Air – Normal Operation

Table 7 presents the plant stack discharges relating to normal operations at maximum operating capacity for the asphalt plant.

| Table 7: Parameters for Tasman Bay Asphalt Plant | |
|--------------------------------------------------------------------------------------------------------------------------------------------------------------------------------------------------------------------------------------------------------------------------------------------------------------------------------------------------------------------------------------------------------------------------------------------------------------------------------------------------------------------------------------------|------------------------------------------------------------------|
| Parameter | Values |
| Heat release | Up to 13 MW gross |
| Fuel consumption rate ² | 6 litres diesel per tonne of asphalt (up to 780 litres per hour) |
| Volumetric Flow | 48,000 Am ³ /hr (31,000 Nm ³ /hr) |
| Efflux Temperature | 150 °C |
| Efflux velocity | 20 m/s |
| Carbon monoxide | 0.65 g/s |
| Oxides of nitrogen (as NO ₂) | 1.37 g/s |
| SO ₂ | 0.35 mg/s ³ |
| PM ₁₀ | 0.17 g/s |
| PM _{2.5} | 0.12 g/s |
| <p>Notes:</p> <ol style="list-style-type: none"> 1. Based on USEPA Emission factors, AP-42, January 1995a. Compilation of Air Pollutant Emission Factors Volume 1: Stationary Point and Area Sources, Fifth Edition, AP-42 Section 11.1, Hot-Mix Asphalt Plants. Assuming maximum production rate of 130 tonnes per hour. 2. Based on manufacturer guaranteed emission rate of particulate matter of 20 mg/Nm³. 3. Assumption of 10 ppm Sulphur in diesel fuel and 780 L/hour fuel usage rate. | |

5.4 Nature and Composition of Discharges to Air – Abnormal Operation

Abnormal discharges into air can occur under the circumstances described in this section.

If the drum burner when fired on diesel fuel is poorly maintained or adjusted, the emission of black smoke may occur from the stack. Providing the burner is appropriately maintained and adjusted then the likelihood of significant smoke emissions is low.

Faulty adjustment of the burner, and/or failure of the induced draught fan to sufficiently extract products of combustion and drying from the drum may generate positive pressure in the drum with fugitive discharges to atmosphere ('puffing'). Proper burner adjustment and induced draught fan regulation to maintain slight negative pressure in the drum prevents this problem.

The plant will have controls to notify the plant operators of potential faults. The controls include alarm functions for all important parameters including bitumen tank temperature, burner parameters, drying drum temperature, fan parameters, fabric filter temperature and pressure, and fuel consumption.

Nuisance dust effects may arise from poor control of transport and storage of aggregate; failing to keep working areas clean; failing to keep truck and machinery speeds low to minimise dust emissions during dry (and especially windy) weather, and/or failing to keep such surfaces damp. Proper management and maintenance of plant and facilities reduces the frequency of such events and reduces their impact to a minimum if they do occur. Dust management and mitigation measures will be included in the Environmental Management Plan for the sites.

5.5 Process Monitoring

Operation of the asphalt plant will be automatically controlled by a computerised control system. Automatic controls measure the input of aggregates and controls the addition of bitumen and the mix temperature. The control system will be programmed by the operator to the desired blend and production rate and the system automatically provides consistent aggregate and bitumen feed. Key parameters for control include:

- ∴ Aggregate and bitumen feed rates;
- ∴ Hot mix production as total tonnes; and,
- ∴ Hot mix temperature.

Important parameters will also be manually logged. Product quality is the definitive test of proper process operation (product will be monitored by a registered technician).

Discharges of contaminants to air are generally not monitored directly on a continuous basis, but they are visually assessed and minimised as documented in the Site Environmental Management Plan.

6.0 Assessment of Effects of Discharges on the Environment

6.1 Introduction

Under normal operation, discharges from the hot mix plant will consist of:

- ∴ A noticeable white steam plume, which dissipates as the steam evaporates;
- ∴ Products of combustion, including carbon dioxide, CO, oxides of nitrogen and SO₂;
- ∴ Particulate matter (as PM₁₀ and PM_{2.5});
- ∴ Limited dust from process fugitive emissions, truck and machinery movements during dry weather, and from receipt and handling of aggregate; and
- ∴ Minimal dust from storage of aggregates.

6.2 Atmospheric Dispersion Modelling of Chimney Discharge

6.2.1 Introduction

Computer dispersion modelling is an internationally accepted method for predicting concentrations of contaminants in air downwind of a source for use in assessing the effects of discharges on the environment. Particular dispersion models may be approved by regulatory agencies for specific applications. Dispersion models account for factors including the emission rate of the contaminant(s), the height of the discharge, building downwash effects, local topography, and meteorology. The main meteorological aspects considered in modelling are wind speed and direction, ambient temperature, atmospheric mixing height and atmospheric stability.

The accuracy of model predictions depends on:

- ∴ The quality of the input data and assumptions;
- ∴ The inherent limitations in the model for predicting plume rise at any point downwind;
- ∴ The ability to predict plume dispersion coefficients (plume spread);
- ∴ The assumption that meteorological conditions remain constant between the source and receptor; and,
- ∴ That varying terrain can be accounted for.

6.2.2 Modelling Approach

The dispersion of contaminants from the proposed asphalt plant stack have been estimated using the CALPUFF dispersion model. The CALPUFF model, through the CALMET meteorological processor, simulates complex meteorological patterns that exist in a particular location. The effects of local topography and changes in land surface characteristics are accounted for by this model. CALPUFF has been adopted by the US Environmental Protection Agency (US EPA) in its Guideline on Air Quality Models as the preferred model for assessing long range transport (>50km downwind), and shorter downwind distances for applications involving complex wind regimes. Due to its treatment of complex terrain and meteorology CALPUFF is one of the more widely used dispersion models in New Zealand.

The CALPUFF Modelling System consists of three main components CALMET, CALPUFF and CALPOST. CALMET is a meteorological model that develops hourly wind and temperature fields on a three-dimensional gridded modelling domain. Two-dimensional fields such as mixing heights, surface characteristics, and dispersion properties are included in the file developed by CALMET. CALPUFF is a dispersion model that transports puffs of material from modelled sources, simulating dispersion and transformation processes along the way, using the meteorological fields generated by CALMET. The output file from CALPUFF

contains hourly concentrations at selected receptor locations. CALPOST is then used to process this file, producing tabulations that summarise the results of the simulation and gridded results used to produce isopleth lines of equal concentrations for the modelling averaging times.

6.1.1. CALMET Meteorological Data

TDC provided the CALMET datasets for the years 2008 and 2009. The datasets were developed by Golder Associates (Golder). No CALMET input files or detailed input data (surface data, upper data etc.) were supplied with the files. The CALMET settings were obtained with an attached short document and other files provided with the datasets. CALMET version 6.326 was used to produce the data sets.

The following are the CALMET settings as provided by Golder:

- ✧ Grid Domain - 26 km x 26 km with grid spacing of 0.25 km, with 10 vertical levels;
- ✧ Number of Grid Cells (West to East, South to North) – 104, 104;
- ✧ Projection [PMAP] – TTM;
- ✧ Latitude [RLATO] – 41.298S;
- ✧ Longitude [RLONO] – 173.237E;
- ✧ False Easting [FEAST] – 1619.842 (NZTM km);
- ✧ False Northing [FNORTH] – 5428.134 (NZTM km);
- ✧ South west corner X- coordinate [XORIGKM] – 1606.00 (NZTM km); and
- ✧ South west corner Y- coordinate [YORIGKM] – 5415.00 (NZTM km).

A set of wind vector data for 2009 were extracted from a pseudo station from the CALMET dataset located near the proposed Tasman Bay Asphalt site. Figure 8 presents the wind-rose showing the wind pattern at this location. The wind-rose shows prevailing winds are from south-west and south-southwest, and winds from north and north-northeast sectors are also common. This compares favourably to the wind-rose of measured winds at the Nelson Airport meteorological station shown in Figure 3.

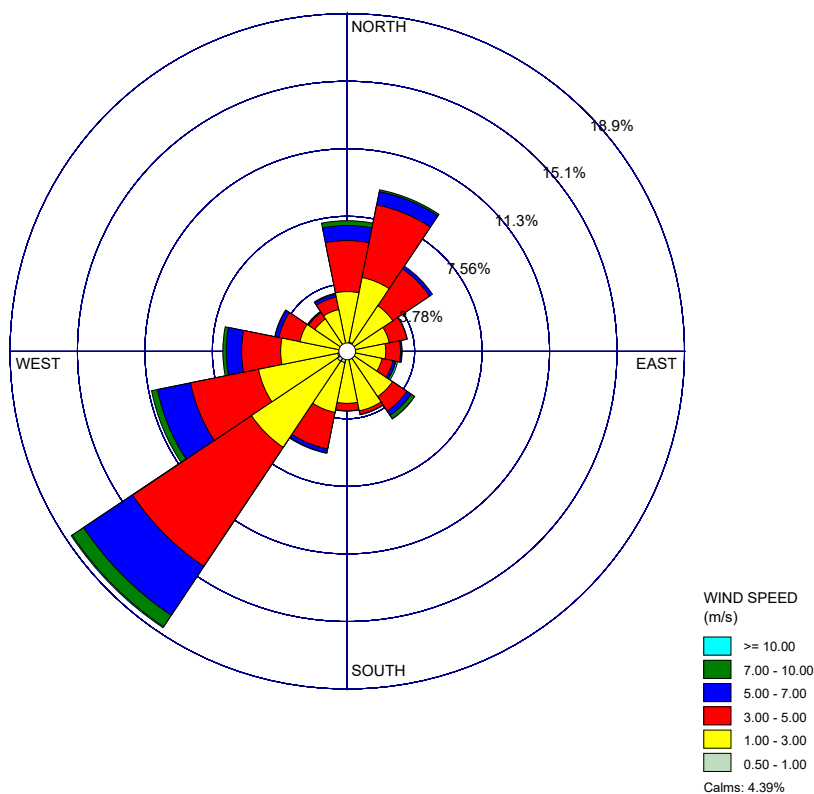


Figure 8: CALMET Windrose Extracted at Tasman Bay Asphalt Site, 2008-2009

6.2.3 CALPUFF Model Settings

The CALPUFF dispersion model (Version 7.2.1) was used for this assessment for the 2008-2009 modelling period. The model was set up as follows:

- ∴ A 5 km x 5 km domain with receptors placed at intervals of 50 metres;
- ∴ Dispersion rates were calculated using turbulence computed from micrometeorology and the Probability Density Function algorithm;
- ∴ No chemical transformation or deposition were included.

The default model settings for CALPUFF were used except as otherwise specified.

Emission parameters including contaminant emission rates as provided in Table 7 and Table 8 were input into the model. The post-processing model CALPOST Version 7.1.0 was run to predict different time averages (1-hour, 8-hour, 24-hour, and annual averages) for comparison with the relevant guidelines or standards.

Building dimensions in the vicinity of the emission source were incorporated for determining the effects of building downwash.

| Table 8: Dispersion Modelling Parameters | |
|-------------------------------------------------|----------------------------------------------------------------------------------------------------------------------------------------|
| Parameter | Values for Dispersion Modelling |
| Chimney height (above grade) | 7.8 m for an effective height of 7.3 m |
| Chimney exit diameter | 0.59 m x 0.90 m |
| Chimney efflux temperature | 150°C |
| Chimney efflux velocity | 20 m/s |
| Hours of Operation | 6 am – 4 pm |
| Modelling domain size | 4 x 4 km (64 km ²) |
| Receptor locations | Nested Grid: <ul style="list-style-type: none"> ∴ 50 m × 50 m out to 5 km Sensitive receptors at selected residences |
| Averaging times | 1 hour, 8 hour, 24 hour, and annual |

As noted earlier the operating hours may vary, but the maximum operation will be limited to 10 hours in a 24-hour period. For the purposes of the dispersion modelling undertaken, we expect that provided the maximum hours do not exceed 10 hours, then there will be very little impact on the overall modelling results and no impact on the conclusions reached in the assessment based on the modelling.

6.3 Dispersion Modelling Results

Table 9 presents the highest predicted maximum ground level concentrations (MGLCs) of the modelled contaminants not including background values. The maximum prediction at or beyond the site boundary, and the highest value at any sensitive receptor are reported.

The highest predicted concentrations of all contaminants are substantially below the assessment criteria for all averaging periods. The predicted MGLCs at the surrounding sensitive receptors will be well below the highest predictions, and the effects of the discharges will be at a level that is less than minor.



| Table 9: Highest Predicted MGLCs for Asphalt Plant Without Background | | | | |
|-----------------------------------------------------------------------|----------------------------------------|---------------------------------------------------|----------------------------------------------------------------------------|-----------------------------|
| Contaminant | Averaging Period | Peak Modelled MGLC (µg/m³) (excluding background) | Modelled MGLC (µg/m³) at Nearest Sensitive Receptor (excluding background) | Evaluation Criteria (µg/m³) |
| PM ₁₀ | 24-hour | 14.5 | 0.8 | 50 (NES) |
| | Annual | 1.5 | 0.09 | 20 (NZAAQG) |
| PM _{2.5} | 24-hour | 10.2 | 0.6 | 50 (NES) |
| | Annual | 1.0 | 0.06 | 20 (NZAAQG) |
| NO ₂ ¹ | 1-hour (99.9 th percentile) | 60 | 7.8 | 200 (NZAAQG) |
| | 24-hour | 23 | 1.3 | 100 (NZAAQG) |
| | Annual | 2.8 | 0.2 | 30 (NZAAQG) |
| CO | 1-hour (99.9 th percentile) | 142 | 18.5 | 30,000 (NZAAQG) |
| | 8-hour | 117 | 6.4 | 10,000 (NZAAQG) |
| SO ₂ | 1-hour (99.9 th percentile) | <1 | <1 | 350 (NZAAQG) |
| | 24-hour | <1 | <1 | 120 (NZAAQG) |

Notes:
 1. Assume 20% of NO_x is NO₂.

6.4 Cumulative Effects

Table 10 provides the cumulative results of the highest predicted concentrations with the assumed background concentrations for comparison against the relevant assessment criteria. The cumulative effects of the discharges with the existing background contaminant concentrations are shown to be within the relevant assessment criteria for all contaminants and averaging periods.

6.5 Contour Plots

The modelling results for PM₁₀ are further supported by contour plots to provide information of the locations and distribution of the maximum predicted 24-hour average and annual average concentrations. Other contaminants will follow the same contour profiles for the same averaging periods.

Figure 9 shows the predicted MGLCs of 24-hour average PM₁₀ for the proposed plant, with the highest concentrations occurring immediately to the east of the asphalt plant stack. Concentrations are predicted to be significantly lower at further distances and are predicted to be below 0.8 µg/m³ at the nearest sensitive receptors. Concentrations of PM₁₀ within the Richmond airshed are predicted to be less than 0.1 µg/m³ as a 24-hour average.

Figure 10 shows the predicted MGLCs of PM₁₀ as annual averages and indicates the highest predicted concentrations immediately to the east of the site boundary, with concentrations rapidly decreasing at further distances. Concentrations at the nearest residences are predicted to be less than 0.05 µg/m³ as an annual average.

The discharges to air were assumed to be continuous over a 10-hour day (6 am to 4 pm) and 7 days per week. It is unlikely that the plant would operate at maximum rates of production for 10 hours continuously over an entire year, and so the modelling is a conservative assessment for 24-hour and annual predictions.



Table 10: Highest Predicted MGLCs for the Proposed Asphalt Plant (including background)

| Contaminant | Averaging Period | Peak Offsite Modelled MGLC ($\mu\text{g}/\text{m}^3$) (including background) | Peak Modelled MGLC at Nearest Residence ($\mu\text{g}/\text{m}^3$) (including background) | Evaluation Criteria ($\mu\text{g}/\text{m}^3$) |
|------------------------------|----------------------------------------|--------------------------------------------------------------------------------|---------------------------------------------------------------------------------------------|--------------------------------------------------|
| PM ₁₀ | 24-hour | 39.2 | 25.5 | 50 (NES) |
| | Annual | 19.5 | 18.1 | 20 (NZAAQG) |
| PM _{2.5} | 24-hour | 22.6 | 13.0 | 25 (proposed amendment to NES) |
| | Annual | 10 | 9.06 | 10 (WHO) |
| NO ₂ ¹ | 1-hour (99.9 th percentile) | 125 | 72.8 | 200 (NES) |
| | 24-hour | 66 | 44.3 | 100 (NZAAQG) |
| | Annual | 18.8 | 16.2 | 30 (NZAAQG) |
| CO | 1-hour (99.9 th percentile) | 5,142 | 5,019 | 30,000 (NZAAQG) |
| | 8-hour | 2,117 | 2,006 | 10,000 (NES) |

Notes:

1. Assume 20% of NO_x is NO₂.

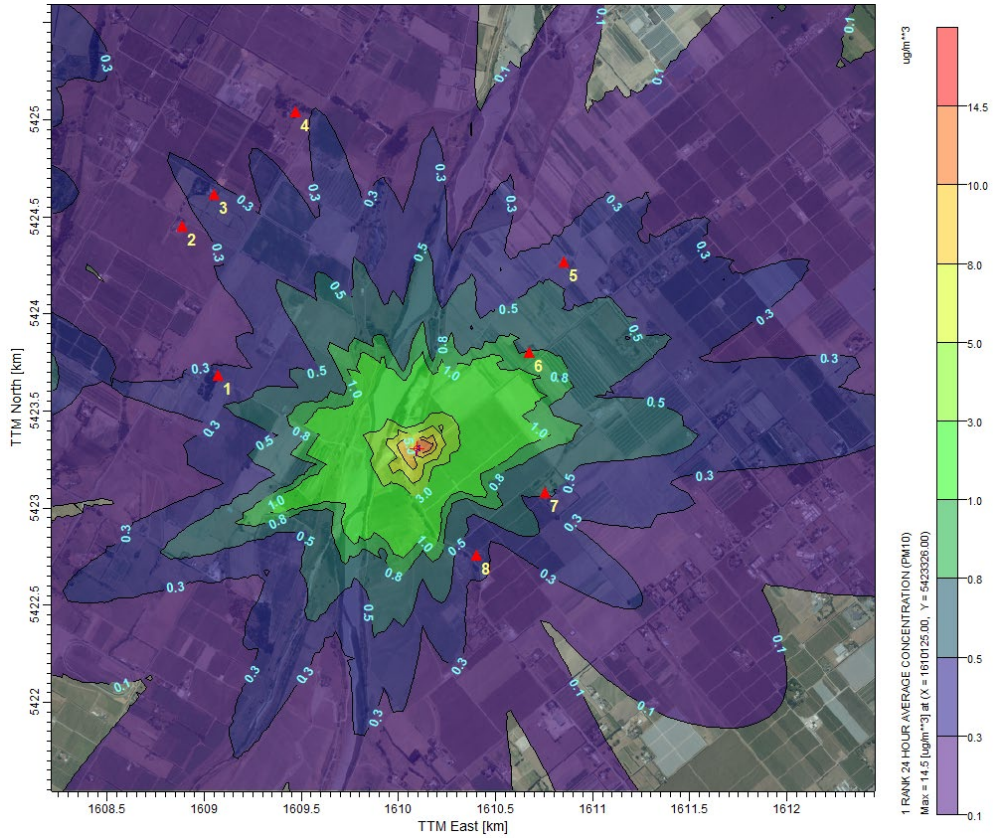


Figure 9: Predicted MGLCs PM₁₀ (24-Hour Averages)

TASMAN BAY ASPHALT - AIR DISCHARGE ASSESSMENT OF EFFECTS

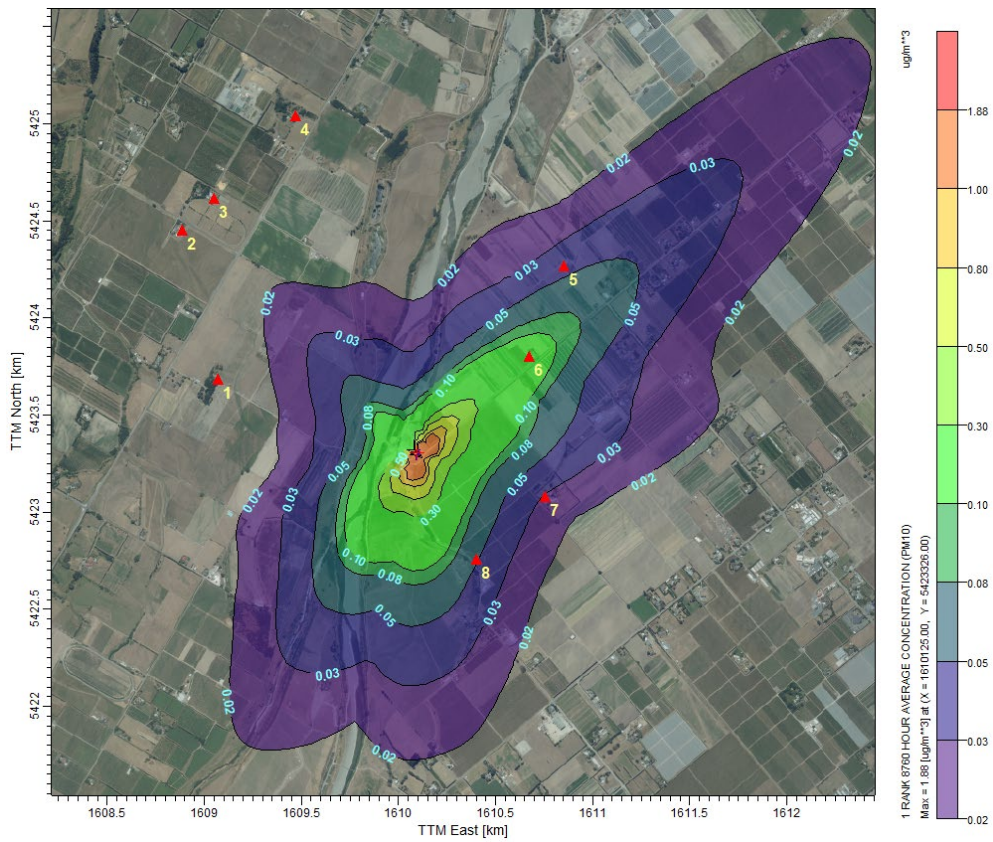


Figure 10: Predicted MGLCs PM₁₀ (Annual Averages)



Appendix A: CALPUFF Summary

CALPUFF Parameters

Asphalt and Construction Ltd - asphalt stack

Year 2008-2009 CALMET.

5 x 5 km² Modelling Domain. Nesting Factor 5 (50 m).

| INPUT GROUP: 0 -- Input and Output File Names | | |
|-----------------------------------------------|--------------------------------------------------------|-------------|
| Parameter | Description | Value |
| PUFLST | CALPUFF output list file (CALPUFF.LST) | CALPUFF.LST |
| CONDAT | CALPUFF output concentration file (CONC.DAT) | CONC.DAT |
| DFDAT | CALPUFF output dry deposition flux file (DFLX.DAT) | DFLX.DAT |
| WFDAT | CALPUFF output wet deposition flux file (WFLX.DAT) | WFLX.DAT |
| DEBUG | Puff-tracking output data file (DEBUG.DAT) | DEBUG.DAT |
| LCFILES | Lower case file names (T = lower case, F = upper case) | F |
| NMETDOM | Number of CALMET.DAT domains | 1 |
| NMETDAT | Number of CALMET.DAT input files | 24 |
| NPTDAT | Number of PTEMARB.DAT input files | 0 |
| NARDAT | Number of BAEMARB.DAT input files | 0 |
| NVOLDAT | Number of VOLEMARB.DAT input files | 0 |
| NFLDAT | Number of FLEMARB.DAT input files | 0 |
| NRDDAT | Number of RDEMARB.DAT input files | 0 |
| NLNDAT | Number of LNEMARB.DAT input files | 0 |
| METDAT | CALMET gridded meteorological data file (CALMET.DAT) | 2008_01.MET |
| METDAT | CALMET gridded meteorological data file (CALMET.DAT) | 2008_02.MET |
| METDAT | CALMET gridded meteorological data file (CALMET.DAT) | 2008_03.MET |
| METDAT | CALMET gridded meteorological data file (CALMET.DAT) | 2008_04.MET |
| METDAT | CALMET gridded meteorological data file (CALMET.DAT) | 2008_05.MET |
| METDAT | CALMET gridded meteorological data file (CALMET.DAT) | 2008_06.MET |
| METDAT | CALMET gridded meteorological data file (CALMET.DAT) | 2008_07.MET |
| METDAT | CALMET gridded meteorological data file (CALMET.DAT) | 2008_08.MET |
| METDAT | CALMET gridded meteorological data file (CALMET.DAT) | 2008_09.MET |
| METDAT | CALMET gridded meteorological data file (CALMET.DAT) | 2008_10.MET |
| METDAT | CALMET gridded meteorological data file (CALMET.DAT) | 2008_11.MET |
| METDAT | CALMET gridded meteorological data file (CALMET.DAT) | 2008_12.MET |
| METDAT | CALMET gridded meteorological data file (CALMET.DAT) | 2009_01.MET |
| METDAT | CALMET gridded meteorological data file (CALMET.DAT) | 2009_02.MET |
| METDAT | CALMET gridded meteorological data file (CALMET.DAT) | 2009_03.MET |
| METDAT | CALMET gridded meteorological data file (CALMET.DAT) | 2009_04.MET |
| METDAT | CALMET gridded meteorological data file (CALMET.DAT) | 2009_05.MET |
| METDAT | CALMET gridded meteorological data file (CALMET.DAT) | 2009_06.MET |

| INPUT GROUP: 0 -- Input and Output File Names | | |
|------------------------------------------------------|------------------------------------------------------|--------------|
| Parameter | Description | Value |
| METDAT | CALMET gridded meteorological data file (CALMET.DAT) | 2009_07.MET |
| METDAT | CALMET gridded meteorological data file (CALMET.DAT) | 2009_08.MET |
| METDAT | CALMET gridded meteorological data file (CALMET.DAT) | 2009_09.MET |
| METDAT | CALMET gridded meteorological data file (CALMET.DAT) | 2009_10.MET |
| METDAT | CALMET gridded meteorological data file (CALMET.DAT) | 2009_11.MET |
| METDAT | CALMET gridded meteorological data file (CALMET.DAT) | 2009_12.MET |

| INPUT GROUP: 1 -- General Run Control Parameters | | |
|---------------------------------------------------------|--------------------------------------------------------------------------------------|--------------|
| Parameter | Description | Value |
| METRUN | Run all periods in met data file? (0 = no, 1 = yes) | 0 |
| IBYR | Starting year | 2008 |
| IBMO | Starting month | 1 |
| IBDY | Starting day | 1 |
| IBHR | Starting hour | 0 |
| IBMIN | Starting minute | 0 |
| IBSEC | Starting second | 0 |
| IEYR | Ending year | 2009 |
| IEMO | Ending month | 12 |
| IEDY | Ending day | 31 |
| IEHR | Ending hour | 23 |
| IEMIN | Ending minute | 0 |
| IESEC | Ending second | 0 |
| ABTZ | Base time zone | UTC+1200 |
| NSECDT | Length of modeling time-step (seconds) | 3600 |
| NSPEC | Number of chemical species modeled | 5 |
| NSE | Number of chemical species to be emitted | 5 |
| ITEST | Stop run after SETUP phase (1 = stop, 2 = run) | 2 |
| MRESTART | Control option to read and/or write model restart data | 0 |
| NRESPD | Number of periods in restart output cycle | 0 |
| METFM | Meteorological data format (1 = CALMET, 2 = ISC, 3 = AUSPLUME, 4 = CTDM, 5 = AERMET) | 1 |
| MPRFFM | Meteorological profile data format (1 = CTDM, 2 = AERMET) | 1 |
| AVET | Averaging time (minutes) | 60 |
| PGTIME | PG Averaging time (minutes) | 60 |
| IOUTU | Output units for binary output files (1 = mass, 2 = odour, 3 = radiation) | 1 |

| INPUT GROUP: 2 -- Technical Options | | |
|--------------------------------------------|--------------------------------------------------------------|--------------|
| Parameter | Description | Value |
| MGAUSS | Near field vertical distribution (0 = uniform, 1 = Gaussian) | 1 |

| INPUT GROUP: 2 -- Technical Options | | |
|--------------------------------------------|--------------------------------------------------------------------------------------------------------------------------------------------------------------------------------------------------------|--------------|
| Parameter | Description | Value |
| MCTADJ | Terrain adjustment method (0 = none, 1 = ISC-type, 2 = CALPUFF-type, 3 = partial plume path) | 3 |
| MCTSG | Model subgrid-scale complex terrain? (0 = no, 1 = yes) | 0 |
| MSLUG | Near-field puffs modeled as elongated slugs? (0 = no, 1 = yes) | 0 |
| MTRANS | Model transitional plume rise? (0 = no, 1 = yes) | 1 |
| MTIP | Apply stack tip downwash to point sources? (0 = no, 1 = yes) | 1 |
| MRISE | Plume rise module for point sources (1 = Briggs, 2 = numerical) | 1 |
| MTIP_FL | Apply stack tip downwash to flare sources? (0 = no, 1 = yes) | 0 |
| MRISE_FL | Plume rise module for flare sources (1 = Briggs, 2 = numerical) | 2 |
| MBDW | Building downwash method (1 = ISC, 2 = PRIME) | 2 |
| MSHEAR | Treat vertical wind shear? (0 = no, 1 = yes) | 0 |
| MSPLIT | Puff splitting allowed? (0 = no, 1 = yes) | 0 |
| MCHEM | Chemical transformation method (0 = not modeled, 1 = MESOPUFF II, 2 = User-specified, 3 = RIVAD/ARM3, 4 = MESOPUFF II for OH, 5 = half-life, 6 = RIVAD w/ISORROPIA, 7 = RIVAD w/ISORROPIA CalTech SOA) | 0 |
| MAQCHEM | Model aqueous phase transformation? (0 = no, 1 = yes) | 0 |
| MLWC | Liquid water content flag | 1 |
| MWET | Model wet removal? (0 = no, 1 = yes) | 0 |
| MDRY | Model dry deposition? (0 = no, 1 = yes) | 0 |
| MTILT | Model gravitational settling (plume tilt)? (0 = no, 1 = yes) | 0 |
| MDISP | Dispersion coefficient calculation method (1= PROFILE.DAT, 2 = Internally, 3 = PG/MP, 4 = MESOPUFF II, 5 = CTDM) | 2 |
| MTURBVW | Turbulence characterization method (only if MDISP = 1 or 5) | 3 |
| MDISP2 | Missing dispersion coefficients method (only if MDISP = 1 or 5) | 3 |
| MTAULY | Sigma-y Lagrangian timescale method | 0 |
| MTAUADV | Advective-decay timescale for turbulence (seconds) | 0 |
| MCTURB | Turbulence method (1 = CALPUFF, 2 = AERMOD) | 1 |
| MROUGH | PG sigma-y and sigma-z surface roughness adjustment? (0 = no, 1 = yes) | 0 |
| MPARTL | Model partial plume penetration for point sources? (0 = no, 1 = yes) | 1 |
| MPARTLBA | Model partial plume penetration for buoyant area sources? (0 = no, 1 = yes) | 1 |
| MTINV | Strength of temperature inversion provided in PROFILE.DAT? (0 = no - compute from default gradients, 1 = yes) | 0 |
| MPDF | PDF used for dispersion under convective conditions? (0 = no, 1 = yes) | 1 |
| MSGTIBL | Sub-grid TIBL module for shoreline? (0 = no, 1 = yes) | 0 |
| MBCON | Boundary conditions modeled? (0 = no, 1 = use BCON.DAT, 2 = use CONC.DAT) | 0 |
| MSOURCE | Save individual source contributions? (0 = no, 1 = yes) | 0 |
| MFOG | Enable FOG model output? (0 = no, 1 = yes - PLUME mode, 2 = yes - RECEPTOR mode) | 0 |
| MREG | Regulatory checks (0 = no checks, 1 = USE PA LRT checks) | 0 |

| INPUT GROUP: 3 -- Species List | | |
|---------------------------------------|-------------------------------|--------------|
| Parameter | Description | Value |
| CSPEC | Species included in model run | PM10 |
| CSPEC | Species included in model run | NOX |
| CSPEC | Species included in model run | SO2 |
| CSPEC | Species included in model run | CO |
| CSPEC | Species included in model run | PM2.5 |

| INPUT GROUP: 4 -- Map Projection and Grid Control Parameters | | |
|---------------------------------------------------------------------|-------------------------------------------------------------|---------------------------------------------------------------------------|
| Parameter | Description | Value |
| PMP | Map projection system | TTM |
| FEAST | False easting at projection origin (km) | 1619.842 |
| FNORTH | False northing at projection origin (km) | 5428.134 |
| UTMHEM | Hemisphere (N = northern, S = southern) | N |
| RLAT0 | Latitude of projection origin (decimal degrees) | 41.298S |
| RLON0 | Longitude of projection origin (decimal degrees) | 173.237E |
| XLAT1 | 1st standard parallel latitude (decimal degrees) | 30S |
| XLAT2 | 2nd standard parallel latitude (decimal degrees) | 60S |
| DATUM | Datum-region for the coordinates | WGS-84 |
| NX | Meteorological grid - number of X grid cells | 104 |
| NY | Meteorological grid - number of Y grid cells | 104 |
| NZ | Meteorological grid - number of vertical layers | 10 |
| DGRIDKM | Meteorological grid spacing (km) | 0.25 |
| ZFACE | Meteorological grid - vertical cell face heights (m) | 0.0, 20.0, 40.0, 80.0, 120.0, 200.0, 400.0, 800.0, 1200.0, 2000.0, 3000.0 |
| XORIGKM | Meteorological grid - X coordinate for SW corner (km) | 1606 |
| YORIGKM | Meteorological grid - Y coordinate for SW corner (km) | 5415 |
| IBCOMP | Computational grid - X index of lower left corner | 1 |
| JBCOMP | Computational grid - Y index of lower left corner | 1 |
| IECOMP | Computational grid - X index of upper right corner | 104 |
| JECOMP | Computational grid - Y index of upper right corner | 104 |
| LSAMP | Use sampling grid (gridded receptors) (T = true, F = false) | T |
| IBSAMP | Sampling grid - X index of lower left corner | 9 |
| JBSAMP | Sampling grid - Y index of lower left corner | 26 |
| IESAMP | Sampling grid - X index of upper right corner | 27 |
| JESAMP | Sampling grid - Y index of upper right corner | 44 |
| MESHDN | Sampling grid - nesting factor | 5 |

| INPUT GROUP: 5 -- Output Options | | |
|-----------------------------------------|--------------------|--------------|
| Parameter | Description | Value |

| INPUT GROUP: 5 -- Output Options | | |
|-----------------------------------------|--------------------------------------------------------------------------------------|--------------|
| Parameter | Description | Value |
| ICON | Output concentrations to CONC.DAT? (0 = no, 1 = yes) | 1 |
| IDRY | Output dry deposition fluxes to DFLX.DAT? (0 = no, 1 = yes) | 0 |
| IWET | Output wet deposition fluxes to WFLX.DAT? (0 = no, 1 = yes) | 0 |
| IT2D | Output 2D temperature data? (0 = no, 1 = yes) | 0 |
| IRHO | Output 2D density data? (0 = no, 1 = yes) | 0 |
| IVIS | Output relative humidity data? (0 = no, 1 = yes) | 0 |
| LCOMPRS | Use data compression in output file (T = true, F = false) | T |
| IQAPLOT | Create QA output files suitable for plotting? (0 = no, 1 = yes) | 1 |
| IPFTRAK | Output puff tracking data? (0 = no, 1 = yes use timestep, 2 = yes use sampling step) | 0 |
| IMFLX | Output mass flux across specific boundaries? (0 = no, 1 = yes) | 0 |
| IMBAL | Output mass balance for each species? (0 = no, 1 = yes) | 0 |
| INRISE | Output plume rise data? (0 = no, 1 = yes) | 0 |
| ICPRT | Print concentrations? (0 = no, 1 = yes) | 0 |
| IDPRT | Print dry deposition fluxes? (0 = no, 1 = yes) | 0 |
| IWPRT | Print wet deposition fluxes? (0 = no, 1 = yes) | 0 |
| ICFRQ | Concentration print interval (timesteps) | 1 |
| IDFRQ | Dry deposition flux print interval (timesteps) | 1 |
| IWFRQ | Wet deposition flux print interval (timesteps) | 1 |
| IPRTU | Units for line printer output (e.g., 3 = ug/m**3 - ug/m**2/s, 5 = odor units) | 3 |
| IMESG | Message tracking run progress on screen (0 = no, 1 and 2 = yes) | 2 |
| LDEBUG | Enable debug output? (0 = no, 1 = yes) | T |
| IPFDEB | First puff to track in debug output | 1 |
| NPFDEB | Number of puffs to track in debug output | 1 |
| NN1 | Starting meteorological period in debug output | 1 |
| NN2 | Ending meteorological period in debug output | 10 |

| INPUT GROUP: 6 -- Subgrid Scale Complex Terrain Inputs | | |
|---------------------------------------------------------------|--------------------------------------------------------------|--------------|
| Parameter | Description | Value |
| NHILL | Number of terrain features | 0 |
| NCTREC | Number of special complex terrain receptors | 0 |
| MHILL | Terrain and CTSG receptor data format (1= CTDM, 2 = OPTHILL) | 2 |
| XHILL2M | Horizontal dimension conversion factor to meters | 1.0 |
| ZHILL2M | Vertical dimension conversion factor to meters | 1.0 |
| XCTDMKM | X origin of CTDM system relative to CALPUFF system (km) | 0.0 |
| YCTDMKM | Y origin of CTDM system relative to CALPUFF system (km) | 0.0 |

| INPUT GROUP: 9 -- Miscellaneous Dry Deposition Parameters | | |
|------------------------------------------------------------------|--------------------|--------------|
| Parameter | Description | Value |

| INPUT GROUP: 9 -- Miscellaneous Dry Deposition Parameters | | |
|------------------------------------------------------------------|----------------------------------------------------------------------------------------------------------|--------------|
| Parameter | Description | Value |
| RCUTR | Reference cuticle resistance (s/cm) | 30 |
| RGR | Reference ground resistance (s/cm) | 10 |
| REACTR | Reference pollutant reactivity | 8 |
| NINT | Number of particle size intervals for effective particle deposition velocity | 9 |
| IVEG | Vegetation state in unirrigated areas (1 = active and unstressed, 2 = active and stressed, 3 = inactive) | 1 |

| INPUT GROUP: 11 -- Chemistry Parameters | | |
|------------------------------------------------|----------------------------------------------------------------------------------------------|---------------------------------------------------------------------------------------------|
| Parameter | Description | Value |
| MOZ | Ozone background input option (0 = monthly, 1 = hourly from OZONE.DAT) | 1 |
| BCKO3 | Monthly ozone concentrations (ppb) | 80.00, 80.00, 80.00, 80.00, 80.00, 80.00, 80.00, 80.00, 80.00, 80.00, 80.00, 80.00 |
| MNH3 | Ammonia background input option (0 = monthly, 1 = from NH3Z.DAT) | 0 |
| MAVGNH3 | Ammonia vertical averaging option (0 = no average, 1 = average over vertical extent of puff) | 1 |
| BCKNH3 | Monthly ammonia concentrations (ppb) | 10.00, 10.00, 10.00, 10.00, 10.00, 10.00, 10.00, 10.00, 10.00, 10.00, 10.00, 10.00 |
| RNITE1 | Nighttime SO2 loss rate (%/hr) | 0.2 |
| RNITE2 | Nighttime NOx loss rate (%/hr) | 2 |
| RNITE3 | Nighttime HNO3 loss rate (%/hr) | 2 |
| MH2O2 | H2O2 background input option (0 = monthly, 1 = hourly from H2O2.DAT) | 1 |
| BCKH2O2 | Monthly H2O2 concentrations (ppb) | 1.00, 1.00, 1.00, 1.00, 1.00, 1.00, 1.00, 1.00, 1.00, 1.00, 1.00, 1.00 |
| RH_ISRP | Minimum relative humidity for ISORROPIA | 50.0 |
| SO4_ISRP | Minimum SO4 for ISORROPIA | 0.4 |
| BCKPMF | SOA background fine particulate (ug/m**3) | 1.00, 1.00, 1.00, 1.00, 1.00, 1.00, 1.00, 1.00, 1.00, 1.00, 1.00, 1.00 |
| OFRAC | SOA organic fine particulate fraction | 0.15, 0.15, 0.20, 0.20, 0.20, 0.20, 0.20, 0.20, 0.20, 0.20, 0.20, 0.15 |
| VCNX | SOA VOC/NOX ratio | 50.00, 50.00, 50.00, 50.00, 50.00, 50.00, 50.00, 50.00, 50.00, 50.00, 50.00, 50.00 |
| NDECAY | Half-life decay blocks | 0 |

| INPUT GROUP: 12 -- Misc. Dispersion and Computational Parameters | | |
|-------------------------------------------------------------------------|-------------------------------------------------------------|--------------|
| Parameter | Description | Value |
| SYTDEP | Horizontal puff size for time-dependent sigma equations (m) | 550 |

| INPUT GROUP: 12 -- Misc. Dispersion and Computational Parameters | | |
|-------------------------------------------------------------------------|------------------------------------------------------------------------------------------------------------|---------------------------------------------------------------------------------|
| Parameter | Description | Value |
| MHFTSZ | Use Heffter equation for sigma-z? (0 = no, 1 = yes) | 0 |
| JSUP | PG stability class above mixed layer | 5 |
| CONK1 | Vertical dispersion constant - stable conditions | 0.01 |
| CONK2 | Vertical dispersion constant - neutral/unstable conditions | 0.1 |
| TBD | Downwash scheme transition point option (<0 = Huber-Snyder, 1.5 = Schulman-Scire, 0.5 = ISC) | 0.5 |
| IURB1 | Beginning land use category for which urban dispersion is assumed | 10 |
| IURB2 | Ending land use category for which urban dispersion is assumed | 19 |
| ILANDUIN | Land use category for modeling domain | 20 |
| Z0IN | Roughness length for modeling domain (m) | .25 |
| XLAIIN | Leaf area index for modeling domain | 3.0 |
| ELEVIN | Elevation above sea level (m) | .0 |
| XLATIN | Meteorological station latitude (deg) | -999.0 |
| XLONIN | Meteorological station longitude (deg) | -999.0 |
| ANEMHT | Anemometer height (m) | 10.0 |
| ISIGMAV | Lateral turbulence format (0 = read sigma-theta, 1 = read sigma-v) | 1 |
| IMIXCTDM | Mixing heights read option (0 = predicted, 1 = observed) | 0 |
| XMULEN | Slug length (met grid units) | 1 |
| XSAMLEN | Maximum travel distance of a puff/slug (met grid units) | 1 |
| MXNEW | Maximum number of slugs/puffs release from one source during one time step | 99 |
| MXSAM | Maximum number of sampling steps for one puff/slug during one time step | 99 |
| NCOUNT | Number of iterations used when computing the transport wind for a sampling step that includes gradual rise | 2 |
| SYMIN | Minimum sigma-y for a new puff/slug (m) | 1 |
| SZMIN | Minimum sigma-z for a new puff/slug (m) | 1 |
| SZCAP_M | Maximum sigma-z allowed to avoid numerical problem in calculating virtual time or distance (m) | 5000000 |
| SVMIN | Minimum turbulence velocities sigma-v (m/s) | 0.5, 0.5, 0.5, 0.5, 0.5, 0.5, 0.37, 0.37, 0.37, 0.37, 0.37, 0.37 |
| SWMIN | Minimum turbulence velocities sigma-w (m/s) | 0.2, 0.12, 0.08, 0.06, 0.03, 0.016, 0.2, 0.12, 0.08, 0.06, 0.03, 0.016 |
| CDIV | Divergence criterion for dw/dz across puff (1/s) | 0, 0 |
| NLUTIBL | TIBL module search radius (met grid cells) | 4 |
| WSCALM | Minimum wind speed allowed for non-calm conditions (m/s) | 0.5 |
| XMAXZI | Maximum mixing height (m) | 3000 |
| XMINZI | Minimum mixing height (m) | 50 |
| TKCAT | Emissions scale-factors temperature categories (K) | 265., 270., 275., 280., 285., 290., 295., 300., 305., 310., 315. |

| INPUT GROUP: 12 -- Misc. Dispersion and Computational Parameters | | |
|-------------------------------------------------------------------------|--------------------------------------------------------------------------|---------------------------------------------------|
| Parameter | Description | Value |
| PLX0 | Wind speed profile exponent for stability classes 1 to 6 | 0.07, 0.07, 0.1, 0.15, 0.35, 0.55 |
| PTG0 | Potential temperature gradient for stable classes E and F (deg K/m) | 0.02, 0.035 |
| PPC | Plume path coefficient for stability classes 1 to 6 | 0.5, 0.5, 0.5, 0.5, 0.35, 0.35 |
| SL2PF | Slug-to-puff transition criterion factor (sigma-y/slug length) | 10 |
| FCLIP | Hard-clipping factor for slugs (0.0 = no extrapolation) | 0 |
| NSPLIT | Number of puffs created from vertical splitting | 3 |
| IRESPLIT | Hour for puff re-split | 0,0,0,0,0,0,0,0,0,0,0,0,0,0,0,0,0,0,1,0,0,0,0,0,0 |
| ZISPLIT | Minimum mixing height for splitting (m) | 100 |
| ROLDMAX | Mixing height ratio for splitting | 0.25 |
| NSPLITH | Number of puffs created from horizontal splitting | 5 |
| SYSPЛИTH | Minimum sigma-y (met grid cells) | 1 |
| SHSPLIT | Minimum puff elongation rate (SYSPЛИTH/hr) | 2 |
| CNSPLIT | Minimum concentration (g/m**3) | 1E-007 |
| EPSSLUG | Fractional convergence criterion for numerical SLUG sampling integration | 0.0001 |
| EPSAREA | Fractional convergence criterion for numerical AREA source integration | 1E-006 |
| DSRISE | Trajectory step-length for numerical rise integration (m) | 1.0 |
| HTMINBC | Minimum boundary condition puff height (m) | 500 |
| RSAMPBC | Receptor search radius for boundary condition puffs (km) | 10 |
| MDEPBC | Near-surface depletion adjustment to concentration (0 = no, 1 = yes) | 1 |

| INPUT GROUP: 13 -- Point Source Parameters | | |
|---------------------------------------------------|------------------------------------------------------------------------------|--------------|
| Parameter | Description | Value |
| NPT1 | Number of point sources | 1 |
| IPTU | Units used for point source emissions (e.g., 1 = g/s) | 1 |
| NSPT1 | Number of source-species combinations with variable emission scaling factors | 5 |
| NPT2 | Number of point sources in PTEMARB.DAT file(s) | 0 |

| INPUT GROUP: 14 -- Area Source Parameters | | |
|--------------------------------------------------|------------------------------------------------------------------------------|--------------|
| Parameter | Description | Value |
| NAR1 | Number of polygon area sources | 0 |
| IARU | Units used for area source emissions (e.g., 1 = g/m**2/s) | 1 |
| NSAR1 | Number of source-species combinations with variable emission scaling factors | 0 |
| NAR2 | Number of buoyant polygon area sources in BAEMARB.DAT file(s) | 0 |

| INPUT GROUP: 15 -- Line Source Parameters | | |
|--------------------------------------------------|------------------------------------------------------------------------------|--------------|
| Parameter | Description | Value |
| NLN2 | Number of buoyant line sources in LNEMARB.DAT file | 0 |
| NLINES | Number of buoyant line sources | 0 |
| ILNU | Units used for line source emissions (e.g., 1 = g/s) | 1 |
| NSLN1 | Number of source-species combinations with variable emission scaling factors | 0 |
| NLRISE | Number of distances at which transitional rise is computed | 6 |
| XL | Average building length (m) | 0.0 |
| HBL | Average building height (m) | 0.0 |
| WBL | Average building width (m) | 0.0 |
| WML | Average line source width (m) | 0.0 |
| DXL | Average separation between buildings (m) | 0.0 |
| FPRIMEL | Average buoyancy parameter (m ⁴ /s ³) | 0 |

| INPUT GROUP: 16 -- Volume Source Parameters | | |
|----------------------------------------------------|------------------------------------------------------------------------------|--------------|
| Parameter | Description | Value |
| NVL1 | Number of volume sources | 0 |
| IVLU | Units used for volume source emissions (e.g., 1 = g/s) | 1 |
| NSVL1 | Number of source-species combinations with variable emission scaling factors | 0 |
| NVL2 | Number of volume sources in VOLEMARB.DAT file(s) | 0 |

| INPUT GROUP: 17 -- FLARE Source Control Parameters (variable emissions file) | | |
|-------------------------------------------------------------------------------------|--------------------------------------------------------|--------------|
| Parameter | Description | Value |
| NFL2 | Number of flare sources defined in FLEMARB.DAT file(s) | 0 |

| INPUT GROUP: 18 -- Road Emissions Parameters | | |
|-----------------------------------------------------|-----------------------------------------------------------------------------------------|--------------|
| Parameter | Description | Value |
| NRD1 | Number of road-links sources | 0 |
| NRD2 | Number of road-links in RDEMARB.DAT file | 0 |
| NSFRDS | Number of road-links and species combinations with variable emission-rate scale-factors | 0 |

| INPUT GROUP: 19 -- Emission Rate Scale-Factor Tables | | |
|-------------------------------------------------------------|----------------------------------------|--------------|
| Parameter | Description | Value |
| NSFTAB | Number of emission scale-factor tables | 1 |

| INPUT GROUP: 20 -- Non-gridded (Discrete) Receptor Information | | |
|-----------------------------------------------------------------------|------------------------------------------------------|--------------|
| Parameter | Description | Value |
| NREC | Number of discrete receptors (non-gridded receptors) | 8 |
| NRGRP | Number of receptor group names | 0 |